



Knowledge • Service • Vision

Fact Book 2005 – 2009

OFFICE OF INSTITUTIONAL RESEARCH, UNIVERSITY OF LA VERNE

UNIVERSITY OF LA VERNE FACT BOOK 2005-2009
9th Edition, February 2010

Editor:

Yingxia Cao, Director of Institutional Research
Office of Institutional Research, Academic Affairs
University of La Verne
La Verne, CA 91750
Tel: (909) 593-3511 ext. 4235
Fax: (909) 392-2709
Email: ycao@ulv.edu

Contributors:

Aghop Der-Karabetian, Associate Vice President, University Assessment
James Schirmer, Senior Research Associate, Academic Affairs
Brett Schmitt, HR Technical Service Manager, Human Resource Department
James S. Irwin, Financial Operations Manager, Accounting Department
Fernando Ramos, Assistant Director, Financial Aid Office

This book is intended as a reference for the ULV Community and may be quoted, without permission, using acceptable citation guidelines. Reproduction of complete tables, figures, or text must include a "University of La Verne Fact Book 2005-2009" notation and page number.

Information contained in the Fact Book is based on annual census data generated from the Banner student record system on November 15 and from various University offices. If you would like more information about the data, please contact the Office of Institutional Research. All information contained in this book is also available at the website of the Office of Institutional Research: <http://www.ulv.edu/ir/reports/factbooks/>.

TABLE OF CONTENTS

A. STUDENTS

A-1: Unduplicated Student Headcount by Campus/Program	1
A-2: Unduplicated Undergraduate Student Headcount by Major	2
A-3 to A-5: Unduplicated Graduate Student Headcount by Major	3
A-6: Unduplicated Student Headcount by Level, Major, and Campus – The College of Arts & Sciences	4
A-7: Unduplicated Student Headcount by Level, Major, and Campus - The College of Business & Public Management	5
A-8: Unduplicated Student Headcount by Level, Major, and Campus - The College of Education & Organizational Leadership	6
A-9: Student Registrations by Campus/Program	7
A-10: Student Full-Time Equivalent (FTE) by Campus/Program	8
A-11: Undergraduate Student FTE by Major	9
A-12 to A-14: Graduate Student FTE by Major	10
A-15: Change in Student FTE by Campus/Program and by College	11
A-16: Student Classification and Enrollment Status	12
A-17: Student Ethnicity and Gender	13
A-18: Student Age by Campus/Program and by Class	14
A-19: International Student	15

B. ADMISSIONS AND NEW STUDENTS

B-1 to B-2: Admission Statistics of Main Campus First-Time Traditional-Age Freshmen	16-17
B-3: Gender of New Main Campus Traditional-Age Freshman and Transfer Students ...	18
B-4: Ethnicity of New Main Campus Traditional-Age Freshman and Transfer Students	19
B-5: New Main Campus Traditional-Age Freshman SAT Scores	20
B-6: Entrance GPA of New Main Campus Traditional-Age Freshmen and Transfers.....	21
B-7: Top 15 High School Origins of New Main Campus Traditional-Age Freshmen...	22
B-8: Top 15 College Origins of New Main Campus Traditional-Age Transfers...	22
B-9: New Main Campus Traditional-Age Students by Geographic Region	23
B-10: New Main Campus Traditional-Age International Students by Geographic Region	24
B-11: New Main Campus Traditional-Age Freshmen by Major	25
B-12: New Main Campus Traditional-Age Transfers by Major	26
B-13: New RCA (Regional Campus Administration) Undergraduate Enrollment by Gender and Ethnicity	27

B-14: New RCA Undergraduate Enrollment by Major	28
B-15: Application, Acceptance, and Enrollment Statistics for the College of Law	29
B-16: New Main Campus Masters Students by Major/Credential	30
B-17: New Doctoral Students by Major/Credential	30
B-18: New RCA Masters Students by Major/Credential	31

C. PERFORMANCE INDICATORS

C-1: Student GPA by Level	32
C-2: Retention Rates for First-Time Full-Time Traditional-Age Freshman Cohort	33
C-3: Graduation Rates for First-Time Full-Time Traditional-Age Freshman (GRS) Cohort	33
C-4: The First Fall-to-Fall (First-Year) Retention Rates for Main Campus First-Time Full-Time Freshman Cohort by Ethnicity	34
C-5: Graduation Rates for Main Campus First-Time Freshman Cohort by Ethnicity	34
C-6: Retention Rates for Main Campus Full-Time Undergraduate Transfer Students	35
C-7: Graduation Rates for Main Campus Full-Time Undergraduate Transfer Students	35
C-8: Conferred Degrees for All Students by Type and by College	36
C-9: Conferred Bachelors Degrees	37
C-10: Conferred Graduate Degrees	38
C-11: Conferred Doctoral Degrees	38
C-12: Conferred Professional Doctoral Degrees	38

D. FACULTY AND STAFF

D-1: Gender and Ethnicity of All Faculty	39
D-2: College and Rank of Full-Time Faculty	40
D-3: Highest Degrees of Full-Time Faculty	41
D-4: Tenure Status of Full-Time Faculty	42
D-5: Years of Service of Full-Time Faculty	43
D-6: Gender, Ethnicity, and Appointment for Staff by Position	44

E. FINANCE & FINANCIAL AID

E-1: Fiscal Year Finances	45-46
E-2: Financial Aid for Traditional-Age Students	47

A. STUDENTS

All statistics are based on data from La Verne's census on November 15 for each year specified, unless otherwise noted.

**A-1: Unduplicated Student Headcount by Campus/Program
Fall 2005 - Fall 2009**

Main Campus Programs	Fall 2005		Fall 2006		Fall 2007		Fall 2008		Fall 2009	
Main Campus Undergraduate	1721	21.7%	1685	22.5%	1683	22.8%	1548	20.6%	1540	20.6%
Main Campus Graduate	1438	18.1%	1419	19.0%	1464	19.9%	1566	20.8%	1665	22.2%
DPA	108	1.4%	105	1.4%	95	1.3%	95	1.3%	108	1.4%
EdD	340	4.3%	341	4.6%	291	3.9%	286	3.8%	269	3.6%
PASC	2	0.0%	2	0.0%	1	0.0%	1	0.0%	0	0.0%
PsyD*	67	0.0%	61	0.0%	69	0.151	86	0.0%	90	1.2%
Law	255	3.2%	263	3.5%	306	4.2%	349	4.6%	391	5.2%
	3931	48.6%	3876	51.0%	3909	67.2%	3931	51.1%	4063	54.3%
Regional Campus Administration (RCA)										
CAPA	817	10.3%	756	10.1%	695	9.4%	673	8.9%	704	9.4%
Education	574	7.2%	509	6.8%	454	6.2%	466	6.2%	333	4.4%
ULV Online	162	2.0%	216	2.9%	242	3.3%	277	3.7%	268	3.6%
Teacher Credential (RCA Ed.)	143	1.8%	164	2.2%	162	2.2%	150	2.0%	155	2.1%
	1696	21.3%	1645	22.0%	1553	21.1%	1566	20.8%	1460	19.5%
Regional Campuses										
Bakersfield Credential**	134	1.7%	110	1.5%	95	1.3%	95	1.3%	90	1.2%
Central Coast	124	1.6%	86	1.1%	94	1.3%	109	1.4%	102	1.4%
High Desert Victorville	145	1.8%	128	1.7%	108	1.5%	113	1.5%	90	1.2%
Inland Empire	284	3.6%	275	3.7%	310	4.2%	311	4.1%	328	4.4%
Kern County/Bakersfield	168	2.1%	157	2.1%	187	2.5%	182	2.4%	162	2.2%
Orange County	386	4.9%	336	4.5%	316	4.3%	306	4.1%	249	3.3%
San Fernando Valley	395	5.0%	362	4.8%	320	4.3%	346	4.6%	361	4.8%
Ventura County	179	2.3%	130	1.7%	111	1.5%	133	1.8%	132	1.8%
	1815	22.8%	1584	21.2%	1541	20.9%	1595	21.2%	1514	20.2%
Regional Campuses on Military Bases										
Point Mugu	266	3.3%	283	3.8%	257	3.5%	313	4.2%	352	4.7%
Vandenberg	62	0.8%	62	0.8%	59	0.8%	74	1.0%	69	0.9%
	328	4.1%	345	4.6%	316	4.3%	387	5.1%	421	5.6%
Other Programs										
Ecumenical Centers (ABTC/ECBCS)	50	0.6%	36	0.5%	29	0.4%	31	0.4%	27	0.4%
EPIC	28	0.4%	0	0.0%	24	0.3%	19	0.3%	0	0.0%
	78	1.0%	36	0.5%	53	0.7%	50	0.7%	27	0.4%
Special Programs										
Cal Poly CLAD	92	1.2%	0	0.0%	0	0.0%	0	0.0%	0	0.0%
	92	1.2%	0	0.0%	0	0.0%	0	0.0%	0	0.0%
Campus not Designated	9	0.1%	1	0.0%	0	0.0%	1	0.0%	4	0.1%
Enrollment Total	7949	99.2%	7487	99.2%	7372	114.2%	7530	98.9%	7489	100.0%
Professional Development/Travel Learning	375	4.5%	841	10.1%	1029	12.2%	1323	14.9%	1471	16.4%
Enrollment Grand Total	8324	100.0%	8328	100.0%	8401	100.0%	8853	100.0%	8960	100.0%

* PsyD is now separated from Main Campus graduate headcount.

** Bakersfield was organized under Main Campus Programs prior to Fact Book 2003-2007.

Source: Institutional Research Annual Census on November 15.

**A-2: Unduplicated Undergraduate Headcount by Major at all Campuses
Fall 2005 - Fall 2009**

Major	Fall 2005		Fall 2006		Fall 2007		Fall 2008		Fall 2009	
College of Arts & Sciences										
Athletic Training	43	1.0%	41	1.0%	35	0.9%	40	1.0%	39	1.0%
Anthropology	9	0.2%	8	0.2%	12	0.3%	11	0.3%	10	0.3%
Art	28	0.6%	25	0.6%	35	0.9%	36	0.9%	26	0.7%
Art History	5	0.1%	11	0.3%	9	0.2%	6	0.2%	6	0.2%
Behavioral Science	35	0.8%	34	0.8%	32	0.8%	38	1.0%	34	0.9%
Biology	96	2.2%	115	2.8%	97	2.4%	76	1.9%	95	2.5%
Broadcasting	46	1.1%	46	1.1%	40	1.0%	29	0.7%	28	0.7%
Chemistry	28	0.6%	30	0.7%	27	0.7%	25	0.6%	23	0.6%
Communications	84	1.9%	87	2.1%	90	2.3%	73	1.9%	64	1.7%
Comparative Literature	0	0.0%	2	0.0%	1	0.0%	0	0.0%	0	0.0%
Computer Science & Engineering	45	1.0%	46	1.1%	37	0.9%	46	1.2%	50	1.3%
Creative Writing	0	0.0%	0	0.0%	0	0.0%	0	0.0%	5	0.1%
Criminology	180	4.1%	172	4.2%	174	4.4%	172	4.4%	166	4.3%
English	76	1.7%	68	1.7%	59	1.5%	53	1.4%	50	1.3%
Environmental Biology	1	0.0%	3	0.1%	6	0.2%	5	0.1%	5	0.1%
Environmental Management	1	0.0%	1	0.0%	0	0.0%	1	0.0%	1	0.0%
French	1	0.0%	1	0.0%	1	0.0%	0	0.0%	1	0.0%
General Studies (AA)	12	0.3%	0	0.0%	16	0.4%	8	0.2%	0	0.0%
German	0	0.0%	0	0.0%	1	0.0%	0	0.0%	0	0.0%
History	40	0.9%	39	1.0%	35	0.9%	29	0.7%	29	0.8%
International Business & Language	22	0.5%	21	0.5%	21	0.5%	22	0.6%	29	0.8%
International Studies	5	0.1%	3	0.1%	3	0.1%	6	0.2%	8	0.2%
Journalism	43	1.0%	43	1.0%	39	1.0%	31	0.8%	27	0.7%
Legal Studies/Paralegal Studies	92	2.1%	92	2.2%	84	2.1%	73	1.9%	80	2.1%
Liberal Arts	18	0.4%	12	0.3%	13	0.3%	12	0.3%	10	0.3%
Mathematics	23	0.5%	24	0.6%	20	0.5%	13	0.3%	17	0.4%
Movement & Sports Science/Phys Ed	66	1.5%	64	1.6%	66	1.7%	75	1.9%	69	1.8%
Music	13	0.3%	9	0.2%	9	0.2%	10	0.3%	7	0.2%
Photography	0	0.0%	0	0.0%	0	0.0%	0	0.0%	2	0.1%
Philosophy	6	0.1%	8	0.2%	13	0.3%	10	0.3%	9	0.2%
Physics	7	0.2%	6	0.1%	6	0.2%	7	0.2%	5	0.1%
Political Science	52	1.2%	54	1.3%	57	1.4%	60	1.5%	53	1.4%
Psychology	248	5.7%	257	6.3%	234	5.9%	233	5.9%	220	5.7%
Religion	5	0.1%	6	0.1%	9	0.2%	15	0.4%	21	0.5%
Religion & Philosophy	1	0.0%	8	0.2%	9	0.2%	8	0.2%	4	0.1%
Social Science	18	0.4%	18	0.4%	15	0.4%	21	0.5%	18	0.5%
Sociology	79	1.8%	75	1.8%	76	1.9%	67	1.7%	61	1.6%
Spanish	14	0.3%	16	0.4%	12	0.3%	9	0.2%	7	0.2%
Speech Communication	22	0.5%	35	0.9%	31	0.8%	20	0.5%	18	0.5%
Theatre Arts	28	0.6%	26	0.6%	22	0.6%	24	0.6%	25	0.7%
Student Designed Majors	2	0.0%	1	0.0%	3	0.1%	4	0.1%	3	0.1%
	1494	34.2%	1507	36.8%	1449	36.3%	1368	34.9%	1325	34.5%
College of Business & Public Management										
Accounting	66	1.5%	56	1.4%	70	1.8%	72	1.8%	70	1.8%
Business Administration	854	19.6%	791	19.3%	804	20.1%	761	19.4%	758	19.7%
Business Management	4	0.1%	62	1.5%	64	1.6%	55	1.4%	32	0.8%
E-Commerce	11	0.3%	6	0.1%	4	0.1%	8	0.2%	13	0.3%
Economics	9	0.2%	7	0.2%	12	0.3%	20	0.5%	17	0.4%
Health Administration	51	1.2%	36	0.9%	24	0.6%	22	0.6%	21	0.5%
Marketing	20	0.5%	9	0.2%	2	0.1%	0	0.0%	0	0.0%
Organizational Management	541	12.4%	493	12.0%	486	12.2%	574	14.6%	614	16.0%
Public Administration	90	2.1%	85	2.1%	96	2.4%	123	3.1%	140	3.6%
Student Designed Majors	3	0.1%	1	0.0%	0	0.0%	0	0.0%	0	0.0%
	1649	37.8%	1546	37.7%	1562	39.1%	1635	41.7%	1665	43.3%
College of Education & Organizational Leadership										
Child Development	426	9.8%	414	10.1%	358	9.0%	327	8.3%	283	7.4%
Diversified Education/Liberal Studies	543	12.4%	491	12.0%	478	12.0%	462	11.8%	399	10.4%
Multiple Subject (Credential)	7	0.2%	6	0.1%	6	0.2%	4	0.1%	9	0.2%
Single Subject (Credential)	3	0.1%	5	0.1%	1	0.0%	5	0.1%	4	0.1%
	979	22.4%	916	22.3%	843	21.1%	798	20.3%	695	18.1%
Major not declared	245	5.6%	130	3.2%	141	3.5%	121	3.1%	157	4.1%
Total Undergraduate Majors	4367	100.0%	4099	100.0%	3995	100.0%	3922	100.0%	3842	100.0%

Source: Institutional Research Annual Census on November 15.

**A-3: Unduplicated Masters Student Headcount by Major/Credential at All Campuses
Fall 2005 - Fall 2009**

Major	Fall 2005		Fall 2006		Fall 2007		Fall 2008		Fall 2009	
College of Arts & Sciences										
Counseling (Concentration/Special Emphasis)	29	0.9%	24	0.7%	27	1.0%	30	1.1%	23	0.8%
Marriage & Family Therapy (MFT)	80	2.5%	81	2.3%	69	2.6%	79	2.8%	79	2.8%
Student Designed Major	0	0.0%	0	0.0%	0	0.0%	1	0.0%	1	0.0%
	109	3.4%	105	3.0%	96	3.7%	110	3.9%	103	3.7%
College of Business & Public Management										
Business Administration	697	21.9%	727	21.0%	795	30.4%	890	31.9%	968	34.8%
Business Information Technology	5	0.2%	6	0.2%	6	0.2%	8	0.3%	1	0.0%
Business Organizational Management	27	0.8%	34	1.0%	26	1.0%	18	0.6%	5	0.2%
Gerontology	34	1.1%	38	1.1%	35	1.3%	34	1.2%	38	1.4%
Health Services Administration	40	1.3%	33	1.0%	43	1.6%	65	2.3%	63	2.3%
Leadership & Management*	84	2.6%	90	2.6%	95	3.6%	173	6.2%	281	10.1%
Public Administration	61	1.9%	62	1.8%	69	2.6%	76	2.7%	77	2.8%
Student Designed Major	1	0.0%	0	0.0%	1	0.0%	0	0.0%	0	0.0%
	948	29.8%	990	28.7%	1070	40.9%	1264	45.3%	1433	51.5%
College of Education & Organizational Leadership										
Child Development	76	2.4%	63	1.8%	21	0.8%	28	1.0%	36	1.3%
Child Life	25	0.8%	25	0.7%	43	1.6%	44	1.6%	40	1.4%
Educational Management	179	5.6%	152	4.4%	70	2.7%	67	2.4%	34	1.2%
Multiple Subject (Credential)	269	8.5%	231	6.7%	217	8.3%	210	7.5%	160	5.7%
Preliminary Administrative Services (Credential)	34	1.1%	21	0.6%	10	0.4%	5	0.2%	6	0.2%
Pupil Personnel Services (Credential)	3	0.1%	5	0.1%	12	0.5%	11	0.4%	6	0.2%
Reading	63	2.0%	63	1.8%	46	1.8%	41	1.5%	46	1.7%
School/Educational Counseling	363	11.4%	407	11.8%	481	18.4%	528	18.9%	463	16.6%
Single Subject (Credential)	165	5.2%	124	3.6%	124	4.7%	111	4.0%	115	4.1%
Special Education	42	1.3%	41	1.2%	46	1.8%	40	1.4%	57	2.0%
Special Emphasis	346	10.9%	367	10.6%	307	11.8%	271	9.7%	257	9.2%
Special Emphasis: Advanced Teaching Methods	44	1.4%	0	0.0%	0	0.0%	0	0.0%	0	0.0%
Student Designed Majors	0	0.0%	0	0.0%	2	200.0%	0	0.0%	2	0.1%
	1609	50.5%	1499	43.4%	1379	252.7%	1356	48.6%	1222	43.9%
Major not Declared**	517	16.2%	861	24.9%	67	2.6%	58	2.1%	26	0.9%
Total Masters Majors	3183	100%	3455	100%	2612	300%	2788	100%	2784	100%

**A-4: Unduplicated Doctoral Student Headcount by Major/Credential at All Campuses
Fall 2005 - Fall 2009**

Major	Fall 2005		Fall 2006		Fall 2007		Fall 2008		Fall 2009	
Clinical-Community Psychology (PsyD)	67	12.9%	61	11.9%	69	15.1%	86	18.3%	90	19.2%
Educational/Organizational Leadership/Management (I	329	63.5%	340	66.5%	290	63.5%	285	60.6%	268	57.3%
Professional Administrative Services (Credential)	2	0.4%	2	0.4%	1	0.2%	2	0.4%	0	0.0%
Public Administration (DPA)	109	21.0%	106	20.7%	96	21.0%	95	20.2%	109	23.3%
	507	97.9%	509	99.6%	456	99.8%	468	99.6%	467	99.8%
Major not Declared	11	2.1%	2	0.4%	1	0.2%	2	0.4%	1	0.2%
Total Doctoral Majors	518	100%	511	100%	457	100%	470	100%	468	100%

**A-5: Unduplicated First Professional Student Headcount by Major at All Campuses
Fall 2005 - Fall 2009**

Major	Fall 2005		Fall 2006		Fall 2007		Fall 2008		Fall 2009	
First Professional (JD)	255	100.0%	263	100.0%	306	100.0%	349	100.0%	391	100.0%
Total First Professional Majors	255	100.0%	263	100.0%	306	100.0%	349	100.0%	391	100.0%

* Leadership & Management was organized under the College of Education & Organizational Leadership since Fact Book 2002-2006.

** Non-degree professional development students are not included.

Source: Institutional Research Annual Census on November 15.

**A-6: Unduplicated Student Headcount by Level, Major, and Campus*
College of Arts and Science - Fall 2009**

MAJOR	Main Campus	CAPA	Ecumenical Centers	Point Mugu Center	ULV On-Line
Undergraduate					
Athletic Training	38	1			
Anthropology	9	1			
Art	22	4			
Art History	4	2			
Behavioral Science	4	30			
Biology	91	4			
Broadcasting	28				
Chemistry	20	3			
Communications	61	3			
Computer Sci & Engineering	39	11			
Creative Writing	5				
Criminology	76	23		66	1
English	38	12			
Environmental Biology	4	1			
Environmental Mgmt		1			
French	1				
History	23	6			
International Studies	8				
Intl Business&Language	28				
Journalism	26	1			
Legal Studies	21	57			
Paralegal Studies	2				
Liberal Arts	7	3			
Mathematics	15	2			
Movement & Sports Science - Ec	6	1			
Movement&Sports Science	59	3			
Music	5	2			
Photography	2				
Philosophy	9				
Physics	5				
Political Science	51	2			
Psychology	132	52	3	33	
Religion	3		18		
Religion&Philosophy	1	2	1		
Social Science	6	12			
Sociology	22	39			
Spanish	6	1			
Speech Communications	18				
Theatre	24	1			
Writing & Contemporary Culture	1				
Gender Studies		1			
Sports Management	1				
E-Commerce	11	2			
Major Not Declared	20	1	5		
	952	284	27	99	1
Masters					
Counseling	23				
Paralegal Studies	1				
Marriage and Family Therapy	79				
School Psychology	18				
Major Not Declared	13				
Total Master's Level Students	134	0	0	0	0
Doctoral					
Clinical-Community Psychology	90	0	0	0	
Grand Total	1176	284	27	99	1

* Non-degree professional development students are not included.
Source: Institutional Research Annual Census on November 15.

**A-7: Unduplicated Student Headcount by Level, Major, and Campus
College of Business and Public Management - Fall 2009**

MAJOR	Main Campus	DPA	CAPA	ULV On-Line	Central Coast Campus	High Desert Victorville	Inland Empire Campus	Kern County Campus	Orange County Campus	Point Mugu Center	San Fernando Valley Campus	Vandenb erg Center	Ventura County Campus
Undergraduate													
Accounting	36		34										
Business Administration	233		110	38		28	27	101	29	53	92	39	8
Business Management			1					18		13			
Economics	14		3										
Health Administration							4	16					
Health Services Management								1					
Intl Business&Language	1												
Organizational Mgmt	7		131	192	112	1	13	32	20	35	40	13	18
Public Administration	11		32		49			29	1		18		
Major not Declared													1
Non Declared UG Bus & Pub Mgmt				1									
	302	0	311	231	161	29	44	197	50	101	150	52	27
Masters													
Business Administration	565				106	14	11	59	10	63	95	19	26
Business Information Technology	1												
Business Organizational Mgmt				5									
Gerontology	38												
Health Administration	53									9			
Health Services Administration	1												
Leadership & Mgmt	156			17				45		8	31	10	14
Public Administration	77												
Non decl Bus/Econ	2										1		
non decl Hlth Serv Mgmt	2												
	895	0	0	22	106	14	11	104	10	80	127	29	40
Doctoral													
Public Administration	1	108											
Grand Total	1198	108	311	253	267	43	55	301	60	181	277	81	67

A-8: Unduplicated Student Headcount by Level, Major, and Campus
College of Education and Organizational Leadership - Fall 2009

MAJOR	Main Campus	EdD	CAPA	RC Education	RC Teacher Education	Central Coast Campus	Bakersfield Teacher Education	High Desert Victorville Campus	Inland Empire Campus	Kern County Campus	Orange County Campus	San Fernando Valley Campus	Ventura County Campus
Undergraduate													
Child Development	22		35			40		2	14		68	82	20
Liberal Studies	131		70			17		33	13	102		2	31
Multiple Subject	8						1						
Single Subject	4												
Non-Declared UG Ed & Org Ldrsh	21												
	186		105			57	1	35	27	102	68	84	51
Masters													
Child Development	36												
Child Life	40												
Cross-Cultural Lang & Acad Dev	1						1						
Educational Counseling	108			311									
Educational Management	17			17									
Mild/Mod Educ Specialist Lvl II	2						1						
Multiple Subject	106				26		28						
Preliminary Admin Services	6												
Pupil Personnel Services	1			4									
Pupil Prsnl Serv in School Psy	1												
Reading	46												
School Counseling				1									
School Psychology	25												
Single Subject	74				32		9						
Special Education	32				1		21						
Special Emphasis	134				95		28						
Non decl Educ/Teacher Ed	5						1						
Non Declared Grad Reading	1												
	635			333	154		89						
Doctoral													
Educational Leadership		17											
Organizational Leadership		251											
Major not Declared		1											
		269											
Grand Total	821	269	105	333	154	57	90	35	27	102	68	84	51

A-9: Student Registrations by Campus/Program*
Fall 2005 - Fall 2009

Main Campus Programs	Fall 2005		Fall 2006		Fall 2007		Fall 2008		Fall 2009	
Main Campus Undergraduate	2903	30.3%	2565	29.1%	2507	28.6%	2308	26.3%	2362	26.7%
Main Campus Graduate	1641	17.1%	1589	18.0%	1791	20.4%	1772	20.2%	1804	20.4%
DPA	98	1.0%	115	1.3%	0	0.0%	107	1.2%	126	1.4%
EdD	349	3.6%	357	4.1%	299	3.4%	294	3.3%	272	3.1%
PASC	21	0.2%	17	0.2%	4	0.0%	5	0.1%	0	0.0%
Law	329	3.4%	362	4.1%	420	4.8%	457	5.2%	530	6.0%
	5341	55.7%	5005	56.8%	5021	57.2%	4943	56.3%	5094	57.6%
Regional Campus Administration (RCA)										
CAPA	793	8.3%	719	8.2%	730	8.3%	670	7.6%	750	8.5%
Education	589	6.1%	533	6.1%	490	5.6%	500	5.7%	360	4.1%
ULV Online	492	5.1%	531	6.0%	575	6.6%	594	6.8%	570	6.4%
Teacher Credential (RCA Ed.)	147	1.5%	164	1.9%	172	2.0%	159	1.8%	154	1.7%
	2021	21.1%	1947	22.1%	1967	22.4%	1923	21.9%	1834	20.7%
Regional Campuses										
Bakersfield Credential	154	1.6%	132	1.5%	112	1.3%	108	1.2%	100	1.1%
Central Coast	119	1.2%	85	1.0%	89	1.0%	101	1.2%	95	1.1%
High Desert Victorville	142	1.5%	118	1.3%	103	1.2%	109	1.2%	85	1.0%
Inland Empire	259	2.7%	240	2.7%	289	3.3%	300	3.4%	332	3.8%
Kern County/Bakersfield	155	1.6%	158	1.8%	180	2.1%	167	1.9%	139	1.6%
Orange County	343	3.6%	304	3.5%	270	3.1%	264	3.0%	241	2.7%
San Fernando Valley	364	3.8%	331	3.8%	288	3.3%	322	3.7%	332	3.8%
Ventura County	161	1.7%	111	1.3%	110	1.3%	125	1.4%	166	1.9%
	1697	17.7%	1479	16.8%	1441	16.4%	1496	17.0%	1490	16.8%
Regional Campuses on Military Bases										
Point Mugu	296	3.1%	284	3.2%	243	2.8%	303	3.5%	342	3.9%
Vandenberg	60	0.6%	52	0.6%	43	0.5%	63	0.7%	60	0.7%
	356	3.7%	336	3.8%	286	3.3%	366	4.2%	402	4.5%
Other Programs										
Ecumenical Centers (ABTC/ECBCS)	54	0.6%	37	0.4%	33	0.4%	34	0.4%	28	0.3%
EPIC**	31	0.3%	0	0.0%	24	0.3%	19	0.2%	0	0.0%
	85	0.9%	37	0.4%	57	0.6%	53	0.6%	28	0.3%
Special Programs										
Cal Poly CLAD	92	1.0%	0	0.0%	0	0.0%	0	0.0%	0	0.0%
	92	1.0%	0	0.0%	0	0.0%	0	0.0%	0	0.0%
Enrollment Total	9592	100.0%	8804	100.0%	8772	100.0%	8781	100.0%	8848	100.0%
Professional Development/Travel Learning	395	4.0%	846	8.8%	1032	10.5%	1324	13.1%	1475	14.3%
Grand Total	9987	100.0%	9650	100.0%	9804	100.0%	10105	100.0%	10323	100.0%

* The numbers in this page are based on student course campus, where the students actually took the courses during the term.

** Census day figures unavailable for 0s.

Source: Institutional Research Annual Census on November 15.

**A-10: Student Full-Time Equivalent (FTE) by Campus/Program
Fall 2005 - Fall 2009 and Academic Year 2005-06 through 2008-09***

Main Campus Programs	Fall 2005		Fall 2006		Fall 2007		Fall 2008		Fall 2009		IPEDS 2005-06		IPEDS 2006-07		IPEDS 2007-08		IPEDS 2008-09		
Main Campus Undergraduate	1697.7	26.5%	1635.7	27.0%	1636.5	27.2%	1504.6	24.3%	1479.2	24.0%	1714.6	28.4%	1714.3	29.2%	1691.3	28.9%	1581.5	26.8%	
Main Campus Graduate	1204.6	18.8%	1211.1	20.0%	1265.2	21.0%	1376.9	22.2%	1481.8	24.1%	1106.5	18.3%	1143.8	19.5%	1188.6	20.3%	1272.0	21.6%	
DPA	59.3	0.9%	61.6	1.0%	51.4	0.9%	62.4	1.0%	69.9	1.1%	42.7	0.7%	40.0	0.7%	37.2	0.6%	45.8	0.8%	
EdD	213.5	3.3%	197.3	3.3%	159.0	2.6%	154.9	2.5%	141.4	2.3%	145.6	2.4%	139.8	2.4%	110.1	1.9%	108.6	1.8%	
PASC	0.7	0.0%	2.1	0.0%	0.6	0.0%	0.6	0.0%	0.0	0.0%	1.0	0.0%	0.8	0.0%	0.2	0.0%	0.6	0.0%	
Law	364.0	5.7%	371.8	6.1%	434.8	7.2%	493.2	8.0%	567.6	9.2%	284.0	4.7%	308.5	5.3%	348.1	5.9%	398.6	6.8%	
	3539.9	55.2%	3479.5	57.4%	3547.5	58.9%	3592.7	58.0%	3739.8	60.7%	3294.5	54.6%	3347.1	57.0%	3375.5	57.6%	3407.2	57.7%	
Regional Campus Administration (RCA)																			
CAPA	505.2	7.9%	442.3	7.3%	411.1	6.8%	408.2	6.6%	423.5	6.9%	533.1	8.8%	483.0	8.2%	444.3	7.6%	459.1	7.8%	
Education	448.8	7.0%	395.3	6.5%	368.0	6.1%	372.8	6.0%	263.7	4.3%	411.7	6.8%	385.2	6.6%	388.2	6.6%	353.0	6.0%	
ULV Online	116.5	1.8%	165.8	2.7%	180.1	3.0%	203.4	3.3%	190.9	3.1%	118.7	2.0%	159.0	2.7%	168.6	2.9%	173.2	2.9%	
Teacher Credential (RCA Ed.)	165.6	2.6%	183.2	3.0%	170.9	2.8%	149.5	2.4%	151.0	2.5%	139.9	2.3%	153.5	2.6%	145.4	2.5%	128.4	2.2%	
	1236.1	19.3%	1186.6	19.6%	1130.1	18.8%	1134.0	18.3%	1029.0	16.7%	1203.5	19.9%	1180.6	20.1%	1146.4	19.6%	1113.6	18.9%	
Regional Campuses																			
Bakersfield Credential***	100.8	1.6%	82.3	1.4%	67.8	1.1%	64.8	1.0%	61.1	1.0%	96.9	1.6%	89.6	1.5%	74.6	1.3%	70.5	1.2%	
Central Coast	94.9	1.5%	68.0	1.1%	61.3	1.0%	83.3	1.3%	77.8	1.3%	89.5	1.5%	61.9	1.1%	71.0	1.2%	87.4	1.5%	
High Desert Victorville	107.9	1.7%	93.8	1.5%	86.1	1.4%	100.3	1.6%	79.0	1.3%	95.0	1.6%	85.8	1.5%	82.1	1.4%	92.3	1.6%	
Inland Empire	191.0	3.0%	180.0	3.0%	202.0	3.4%	197.4	3.2%	201.4	3.3%	183.0	3.0%	177.4	3.0%	193.2	3.3%	193.7	3.3%	
Kern County/Bakersfield	143.1	2.2%	128.3	2.1%	165.0	2.7%	163.8	2.6%	129.5	2.1%	128.4	2.1%	116.0	2.0%	137.3	2.3%	131.3	2.2%	
Orange County	239.0	3.7%	205.0	3.4%	188.5	3.1%	188.0	3.0%	145.5	2.4%	230.0	3.8%	188.9	3.2%	183.3	3.1%	164.4	2.8%	
San Fernando Valley	265.0	4.1%	241.1	4.0%	202.6	3.4%	209.8	3.4%	224.6	3.6%	257.2	4.3%	229.8	3.9%	205.3	3.5%	193.1	3.3%	
Ventura County	124.5	1.9%	84.3	1.4%	70.6	1.2%	96.5	1.6%	93.3	1.5%	112.8	1.9%	78.5	1.3%	74.0	1.3%	100.2	1.7%	
	1266.2	19.8%	1082.7	17.9%	1043.8	17.3%	1103.9	17.8%	1012.1	16.4%	1192.8	19.8%	1027.9	17.5%	1020.8	17.4%	1033.0	17.5%	
Regional Campuses on Military Bases																			
Elmendorf	0.0	0.0%	0.0	0.0%	0.0	0.0%	0.0	0.0%	0.0	0.0%	0.0	0.0%	0.0	0.0%	0.0	0.0%	0.0	0.0%	
Point Mugu	218.8	3.4%	242.3	4.0%	220.1	3.7%	261.9	4.2%	312.9	5.1%	218.8	3.6%	225.8	3.8%	221.0	3.8%	251.0	4.3%	
Vandenberg	48.5	0.8%	47.0	0.8%	44.0	0.7%	57.5	0.9%	48.6	0.8%	49.0	0.8%	47.7	0.8%	50.5	0.9%	49.6	0.8%	
	267.3	4.2%	289.3	4.8%	264.1	4.4%	319.4	5.2%	361.5	5.9%	267.8	4.4%	273.5	4.7%	271.5	4.6%	300.6	5.1%	
Other Programs																			
Ecumenical Centers (ABTC/ECBCS)	31.9	0.5%	21.3	0.4%	18.0	0.3%	17.6	0.3%	13.7	0.2%	29.0	0.5%	19.6	0.3%	16.9	0.3%	16.8	0.3%	
EPIC**	15.2	0.2%	0.0	0.0%	15.2	0.3%	24.4	0.4%	0.0	0.0%	19.2	0.3%	16.9	0.3%	24.4	0.4%	27.5	0.5%	
	47.1	0.7%	21.3	0.4%	33.2	0.6%	42.0	0.7%	13.7	0.2%	48.2	0.8%	36.5	0.6%	41.3	0.7%	44.3	0.8%	
Special Programs																			
Cal Poly CLAD	46.6	0.7%	0.0	0.0%	0.0	0.0%	0.0	0.0%	0.0	0.0%	17.1	0.3%	0.0	0.0%	0.0	0.0%	0.0	0.0%	
	46.6	0.7%	0.0	0.0%	0.0	0.0%	0.0	0.0%	0.0	0.0%	17.1	0.3%	0.0	0.0%	0.0	0.0%	0.0	0.0%	
Campus not Designated	6.2	0.1%	1.0	0.0%	0.0	0.0%	0.0	0.0%	2.5	0.0%	10.0	0.2%	3.7	0.1%	3.8	0.1%	1.3	0.0%	
Enrollment Grand Total***	6409.4	100.0%	6060.3	100.0%	6018.8	100.0%	6192.0	100.0%	6158.7	100.0%	6033.9	100.0%	5869.4	100.0%	5859.3	100.0%	5900.0	100.0%	
Overseas Campuses/Programs																			
Professional Development/Travel Learn	374.0	5.8%	746.2	12.3%	901.8	15.0%	1120.3	18.1%	1208.5	19.6%	649.1	10.8%	993.4	16.9%	1313.5	22.4%	1475.7	25.0%	
	6783.4	100.0%	6806.5	100.0%	6920.6	100.0%	7312.3	100.0%	7367.2	100.0%	6683.0	100.0%	6862.8	100.0%	7172.8	100.0%	7375.7	100.0%	

* Since Fact Book 2001-2005, two types of FTEs are provided: (1) ULV defined FTE for accreditation purposes and (2) IPEDs (Integrated Postsecondary Education Data System) defined FTE. For the purpose of accreditation, ULV defines FTE differently for undergraduate students and graduate students across different campuses. ULV defined FTE is calculated as follows:

A. Undergraduate students: A Main Campus undergraduate student who takes 12 credits or more is calculated as 1, and otherwise, term credit hours divided by 15; Athens' students, term credit hours divided by 8; CAPA students, term credit hours divided by 12, and other regional campuses students, term credit hours divided by 8; Bakersfield Credential students, credit hours divided by 8; and CalPolyCLAD students, semester hours divided by 9.

B. Graduate students: Main Campus (MBA, MPA, MHA) students, term credit hours divided by 6; Main Campus PsyD, MA Psy) students, semester ours divided by 9; PASC students, Graduate (Tier 1), term hours divided by 9, and Doctoral (Tier 2), term hours divided by 6; DPA, EdD, and Bakersfield Credential students, term credit hours divided by 9; Law students, term hours divided by 9; Regional Campus students, term hours divided by 6; Athens' students, term hours divided by 6; CalPoly CLAD students, semester hours divided by 9.

IPEDS FTE (Full Time Equivalent) is a measurement equal to one student enrolled full time for one academic year. ULV's academic year includes Fall, Winter, Interterm, Spring, and Summer, and it calculates as "graduate credit hours are divided by 24 and undergraduate credit hours are divided by 30".

A third type of FTE, as defined by Common Data Set (CDS), is available online at <http://www.ulv.edu/cds/>. CDS reports only main campus undergraduate enrollment and calculates total FTE as the sum of total full-time students (usually 12 credits for undergraduate and 9 credit for graduate, or university specified credits for full-time students) plus 1/3 part-time students.

** Accurate census data were not available 2002 through 2005. The Athens Campus was closed after Summer 2004 and its students thereafter are classified under "Main

*** Bakersfield was formally under Main Campus Programs, but has been reported under Regional Campus Administration since this edition.

Source: Institutional Research Annual Census on November 15.

**A-11: Undergraduate Student Full-Time Equivalent (FTE) by Major at all Campuses*
Fall 2005 - Fall 2009 and Academic Year 2005-06through 2008-09**

Major	Fall 2005		Fall 2006		Fall 2007		Fall 2008		Fall 2009		IPEDS 2005-06	IPEDS 2006-07	IPEDS 2007-08	IPEDS 2008-09				
College of Arts & Sciences																		
Athletic Training	42.3	1.2%	40.6	1.2%	34.3	1.1%	40.0	1.3%	38.0	1.2%	43.9	1.2%	40.7	1.2%	34.8	1.1%	44.8	1.4%
Anthropology	7.2	0.2%	7.6	0.2%	10.7	0.3%	10.0	0.3%	9.8	0.3%	7.2	0.2%	8.8	0.3%	12.8	0.4%	8.4	0.3%
Art	25.0	0.7%	23.2	0.7%	32.1	1.0%	31.8	1.0%	23.3	0.8%	26.8	0.8%	31.5	0.9%	36.8	1.1%	33.8	1.1%
Art History	2.6	0.1%	7.6	0.2%	7.4	0.2%	4.4	0.1%	5.3	0.2%	4.1	0.1%	7.9	0.2%	7.8	0.2%	3.7	0.1%
Behavioral Science	24.0	0.7%	22.2	0.7%	21.9	0.7%	27.9	0.9%	23.2	0.8%	23.0	0.7%	20.7	0.6%	25.9	0.8%	25.8	0.8%
Biology	93.0	2.7%	108.7	3.3%	93.8	2.9%	74.4	2.3%	91.1	3.0%	99.6	2.8%	106.7	3.2%	93.2	2.8%	78.5	2.4%
Broadcasting	43.9	1.3%	44.3	1.4%	37.8	1.2%	27.6	0.9%	27.1	0.9%	49.2	1.4%	47.0	1.4%	36.3	1.1%	29.9	0.9%
Chemistry	26.6	0.8%	28.6	0.9%	24.3	0.8%	22.1	0.7%	21.5	0.7%	28.9	0.8%	30.3	0.9%	27.8	0.8%	22.4	0.7%
Communications	81.1	2.3%	83.5	2.5%	89.1	2.8%	71.1	2.2%	63.3	2.1%	84.6	2.4%	90.2	2.7%	93.0	2.8%	73.8	2.3%
Comparative Literature	0.0	0.0%	1.8	0.1%	1.0	0.0%	0.0	0.0%	0.0	0.0%	0.5	0.0%	1.3	0.0%	0.9	0.0%	0.0	0.0%
Computer Science & Engineering	46.0	1.3%	40.2	1.2%	29.7	0.9%	39.4	1.2%	43.1	1.4%	42.5	1.2%	40.8	1.2%	31.2	1.0%	43.6	1.4%
Creative Writing	0.0	0.0%	0.0	0.0%	0.0	0.0%	0.0	0.0%	5.0	0.2%	0.0	0.0%	0.0	0.0%	0.0	0.0%	3.4	0.1%
Criminology	156.2	4.5%	152.4	4.6%	155.6	4.8%	146.9	4.6%	149.4	4.9%	156.6	4.5%	152.7	4.6%	152.5	4.6%	141.7	4.4%
English	61.0	1.7%	55.7	1.7%	50.7	1.6%	46.5	1.5%	45.8	1.5%	66.0	1.9%	56.1	1.7%	52.7	1.6%	50.0	1.6%
Environmental Biology	1.0	0.0%	3.0	0.1%	6.0	0.2%	5.0	0.2%	4.2	0.1%	1.8	0.1%	5.2	0.2%	6.0	0.2%	5.7	0.2%
Environmental Management	1.0	0.0%	1.0	0.0%	0.0	0.0%	0.9	0.0%	1.1	0.0%	1.2	0.0%	0.6	0.0%	0.7	0.0%	1.0	0.0%
French	0.9	0.0%	1.1	0.0%	1.0	0.0%	0.0	0.0%	1.0	0.0%	1.5	0.0%	0.5	0.0%	0.5	0.0%	0.0	0.0%
General Studies (AA)	2.8	0.1%	0.0	0.0%	9.8	0.3%	6.1	0.2%	0.0	0.0%	5.1	0.1%	12.3	0.4%	15.9	0.5%	7.6	0.2%
German	0.0	0.0%	0.0	0.0%	1.0	0.0%	0.0	0.0%	0.0	0.0%	0.0	0.0%	0.4	0.0%	0.5	0.0%	0.0	0.0%
History	35.8	1.0%	35.8	1.1%	33.3	1.0%	27.5	0.9%	27.3	0.9%	37.3	1.1%	34.8	1.0%	30.6	0.9%	25.8	0.8%
International Business & Language	22.0	0.6%	21.0	0.6%	21.0	0.7%	21.9	0.7%	28.3	0.9%	23.7	0.7%	23.4	0.7%	21.9	0.7%	26.0	0.8%
International Studies	4.8	0.1%	2.7	0.1%	2.7	0.1%	6.0	0.2%	7.1	0.2%	3.9	0.1%	3.0	0.1%	5.8	0.2%	6.9	0.2%
Journalism	42.3	1.2%	43.0	1.3%	36.7	1.1%	29.9	0.9%	25.8	0.8%	45.7	1.3%	47.1	1.4%	39.5	1.2%	29.1	0.9%
Legal Studies/Paralegal Studies*	69.8	2.0%	66.4	2.0%	61.9	1.9%	52.3	1.7%	57.2	1.9%	73.8	2.1%	65.6	2.0%	62.1	1.9%	54.1	1.7%
Liberal Arts	17.2	0.5%	10.7	0.3%	12.8	0.4%	11.3	0.4%	8.2	0.3%	18.8	0.5%	11.7	0.4%	11.7	0.4%	13.1	0.4%
Mathematics	21.0	0.6%	21.4	0.7%	17.7	0.5%	12.2	0.4%	15.3	0.5%	20.5	0.6%	20.2	0.6%	16.6	0.5%	13.4	0.4%
Movement & Sports Science/Physical Education	62.4	1.8%	58.6	1.8%	61.2	1.9%	71.3	2.2%	67.8	2.2%	62.9	1.8%	63.2	1.9%	64.7	2.0%	75.4	2.3%
Music	10.3	0.3%	7.5	0.2%	7.7	0.2%	9.6	0.3%	6.1	0.2%	11.1	0.3%	7.9	0.2%	9.8	0.3%	10.9	0.3%
Philosophy	0.0	0.0%	0.0	0.0%	0.0	0.0%	0.0	0.0%	2.0	0.1%	0.0	0.0%	0.0	0.0%	0.0	0.0%	0.3	0.0%
Philosophy	5.5	0.2%	8.0	0.2%	11.5	0.4%	10.0	0.3%	8.3	0.3%	6.4	0.2%	8.7	0.3%	11.9	0.4%	10.6	0.3%
Physics	6.3	0.2%	5.5	0.2%	6.0	0.2%	7.0	0.2%	5.0	0.2%	6.4	0.2%	6.6	0.2%	6.9	0.2%	6.1	0.2%
Political Science	50.5	1.4%	49.9	1.5%	51.9	1.6%	58.0	1.8%	51.9	1.7%	52.4	1.5%	50.0	1.5%	58.9	1.8%	61.0	1.9%
Psychology	213.4	6.1%	221.2	6.7%	209.1	6.5%	204.5	6.5%	191.6	6.2%	216.1	6.1%	223.2	6.7%	214.8	6.5%	215.0	6.7%
Religion	3.4	0.1%	4.6	0.1%	6.9	0.2%	10.5	0.3%	13.1	0.4%	3.4	0.1%	5.9	0.2%	7.0	0.2%	10.4	0.3%
Religion & Philosophy	1.0	0.0%	5.7	0.2%	6.7	0.2%	5.1	0.2%	2.3	0.1%	1.8	0.1%	5.3	0.2%	5.2	0.2%	4.0	0.1%
Social Science	16.6	0.5%	15.9	0.5%	12.1	0.4%	16.5	0.5%	13.5	0.4%	17.4	0.5%	18.9	0.6%	15.1	0.5%	17.6	0.5%
Sociology	58.3	1.7%	57.3	1.7%	59.2	1.8%	50.8	1.6%	43.3	1.4%	56.6	1.6%	59.0	1.8%	60.6	1.8%	53.7	1.7%
Spanish	13.6	0.4%	13.2	0.4%	9.5	0.3%	8.3	0.3%	5.8	0.2%	13.7	0.4%	13.0	0.4%	8.1	0.2%	9.0	0.3%
Speech Communication	21.1	0.6%	34.5	1.1%	30.2	0.9%	19.7	0.6%	16.9	0.5%	25.1	0.7%	36.8	1.1%	32.3	1.0%	20.0	0.6%
Theatre Arts	27.3	0.8%	25.4	0.8%	22.0	0.7%	23.7	0.7%	24.5	0.8%	28.7	0.8%	27.3	0.8%	22.3	0.7%	23.1	0.7%
Student Designed Majors	1.3	0.0%	1.0	0.0%	3.0	0.1%	3.0	0.1%	2.5	0.1%	0.6	0.0%	2.3	0.1%	3.7	0.1%	1.1	0.0%
	1318.5	37.6%	1330.8	40.6%	1289.4	40.1%	1213.2	38.3%	1175.8	38.3%	1368.6	38.9%	1387.7	41.6%	1338.6	40.8%	1260.7	39.2%
College of Business & Public Management																		
Accounting	53.1	1.5%	43.5	1.3%	54.1	1.7%	58.2	1.8%	54.9	1.8%	53.4	1.5%	48.3	1.4%	55.8	1.7%	64.4	2.0%
Business Administration	663.0	18.9%	607.3	18.5%	623.1	19.4%	593.2	18.7%	582.9	19.0%	631.3	18.0%	616.3	18.5%	644.5	19.6%	615.6	19.2%
Business Management	2.0	0.1%	36.0	1.1%	33.9	1.1%	32.8	1.0%	17.8	0.6%	12.0	0.3%	39.5	1.2%	35.6	1.1%	29.1	0.9%
E-Commerce	9.9	0.3%	3.3	0.1%	3.6	0.1%	6.8	0.2%	11.9	0.4%	7.2	0.2%	3.6	0.1%	3.7	0.1%	7.7	0.2%
Economics	8.4	0.2%	6.0	0.2%	11.4	0.4%	20.0	0.6%	16.1	0.5%	5.6	0.2%	8.1	0.2%	15.1	0.5%	21.4	0.7%
Health Administration/Management	34.4	1.0%	26.5	0.8%	16.9	0.5%	16.5	0.5%	13.1	0.4%	27.4	0.8%	20.4	0.6%	16.2	0.5%	12.8	0.4%
Marketing	19.3	0.6%	8.5	0.3%	1.3	0.0%	0.0	0.0%	0.0	0.0%	18.7	0.5%	5.7	0.2%	0.9	0.0%	0.0	0.0%
Organizational Management	365.7	10.4%	353.3	10.8%	335.0	10.4%	419.4	13.2%	451.6	14.7%	368.3	10.5%	350.6	10.5%	350.4	10.7%	410.4	12.8%
Public Administration	59.8	1.7%	61.8	1.9%	69.2	2.2%	87.7	2.8%	94.0	3.1%	64.4	1.8%	64.8	1.9%	66.4	2.0%	88.7	2.8%
Student Designed Majors	1.5	0.0%	0.5	0.0%	0.0	0.0%	0.0	0.0%	0.0	0.0%	1.1	0.0%	0.4	0.0%	0.0	0.0%	0.0	0.0%
	1217.1	34.7%	1146.7	34.9%	1148.4	35.7%	1234.6	39.0%	1242.4	40.4%	1189.4	33.8%	1157.7	34.7%	1188.6	36.2%	1250.3	38.9%
College of Education & Organizational Leadership																		
Child Development	258.0	7.4%	241.3	7.4%	216.9	6.7%	193.9	6.1%	176.9	5.8%	262.5	7.5%	241.8	7.2%	217.3	6.6%	182.8	5.7%
Diversified Education/Liberal Studies	490.8	14.0%	436.2	13.3%	429.1	13.4%	422.8	13.3%	343.4	11.2%	476.0	13.5%	424.4	12.7%	421.2	12.8%	413.4	12.9%
Multiple Subject (Credential)	6.5	0.2%	5.8	0.2%	4.4	0.1%	2.3	0.1%	6.1	0.2%	6.7	0.2%	5.9	0.2%	4.3	0.1%	2.6	0.1%
Special Education	0.0	0.0%	0.0	0.0%	0.0	0.0%	0.0	0.0%	1.6	0.1%	0.0	0.0%	0.0	0.0%	0.5	0.0%	0.0	0.0%
Single Subject (Credential)	3.1	0.1%	4.1	0.1%	1.0	0.0%	3.4	0.1%	0.0	0.0%	3.1	0.1%	2.5	0.1%	3.0	0.1%	2.1	0.1%
	758.4	21.6%	687.4	21.0%	651.3	20.3%	622.3	19.6%	528.0	17.2%	748.2	21.3%	674.5	20.2%	646.3	19.7%	600.9	18.7%
Major not declared	214.9	6.1%	116.1	3.5%	123.8	3.9%	97.4	3.1%	125.3	4.1%	208.4	5.9%	119.5	3.6%	109.3	3.3%	102.4	3.2%
Total Undergraduate Majors	3508.9	100%	3281.1	100%	3212.9	100%	3167.6	100%	3071.5	100%	3514.6	100.0%	3339.5	100.0%	3282.8	100%	3214.3	100%

* For explanation of FTE, see page 8.

Source: Institutional Research Annual Census on November 15.

**A-12: Graduate Student Full-Time Equivalent (FTE) by Major/Credential at All Campuses*
Fall 2005 - Fall 2009 and Academic Year 2005-06 through 2008-09**

Major	Fall 2005		Fall 2006		Fall 2007		Fall 2008		Fall 2009		IPEDS 2005-06		IPEDS 2006-07		IPEDS 2007-08		IPEDS 2008-09		
College of Arts & Sciences																			
Counseling (Concentration/Special Emp	21.9	0.9%	19.6	0.7%	21.3	1.0%	22.0	0.7%	20.0	0.9%	17.0	0.6%	14.5	0.5%	19.5	1.0%	20.0	1.0%	
Counseling / Marriage & Family Therapy	64.1	2.5%	64.3	2.3%	54.9	2.6%	61.1	1.8%	59.7	2.7%	53.5	2.0%	54.7	2.1%	49.5	2.5%	56.7	2.8%	
Student Designed Major	0.0	0.0%	0.0	0.0%	0.0	0.0%	0.0	0.0%	0.9	0.0%	0.0	0.0%	0.0	0.0%	0.2	0.0%	0.9	0.0%	
	86.0	3.3%	83.9	3.0%	76.2	3.7%	84.4	2.5%	80.6	3.7%	70.5	2.7%	69.2	2.6%	69.1	3.4%	77.7	3.8%	
College of Business & Public Management																			
Business Administration	557.5	21.7%	606.7	21.5%	659.7	31.7%	743.9	22.4%	803.3	36.4%	518.1	19.7%	606.3	22.9%	630.8	31.4%	702.6	34.3%	
Business Information Technology	4.5	0.2%	4.5	0.2%	5.5	0.3%	8.5	0.3%	1.0	0.0%	7.1	0.3%	5.4	0.2%	7.1	0.4%	6.3	0.3%	
Business Organizational Managemen	22.2	0.9%	30.0	1.1%	22.5	1.1%	11.5	0.3%	4.0	0.2%	22.1	0.8%	25.5	1.0%	20.8	1.0%	7.1	0.3%	
Gerontology	26.6	1.0%	21.5	0.8%	21.7	1.0%	23.6	0.7%	25.2	1.1%	22.2	0.8%	20.6	0.8%	20.1	1.0%	21.0	1.0%	
Health Services Administration/Manag	31.0	1.2%	22.8	0.8%	30.5	1.5%	50.2	1.5%	49.5	2.2%	25.9	1.0%	25.0	0.9%	39.8	2.0%	46.5	2.3%	
Leadership & Management	57.8	2.3%	59.5	2.1%	65.8	3.2%	123.5	3.7%	212.7	9.6%	53.0	2.0%	53.0	2.0%	81.0	4.0%	132.0	6.4%	
Public Administration	49.5	1.9%	43.2	1.5%	47.8	2.3%	54.5	1.6%	52.0	2.4%	45.9	1.7%	41.8	1.6%	41.4	2.1%	50.3	2.4%	
Student Designed Major	0.5	0.0%	0.0	0.0%	0.5	0.0%	0.0	0.0%	0.0	0.0%	0.1	0.0%	0.3	0.0%	0.5	0.0%	0.0	0.0%	
	749.1	29.2%	788.2	28.0%	853.5	41.0%	1015.7	30.5%	1147.7	52.1%	694.5	26.4%	777.8	29.3%	841.5	41.8%	965.7	47.1%	
College of Education & Organizational Leadership																			
Child Development	55.2	2.1%	46.2	1.6%	15.4	0.7%	19.4	0.6%	25.4	1.2%	56.4	2.1%	33.6	1.3%	12.5	0.6%	17.8	0.9%	
Child Life	27.9	1.1%	23.4	0.8%	44.0	2.1%	40.7	1.2%	40.1	1.8%	23.1	0.9%	22.3	0.8%	37.0	1.8%	34.0	1.7%	
Educational Management	149.9	5.8%	119.5	4.2%	48.3	2.3%	47.7	1.4%	21.9	1.0%	135.8	5.2%	97.5	3.7%	51.5	2.6%	38.3	1.9%	
Multiple Subject (Credential)	228.8	8.9%	214.9	7.6%	192.1	9.2%	180.8	5.4%	135.1	6.1%	205.1	7.8%	176.8	6.7%	164.8	8.2%	152.0	7.4%	
Preliminary Administrative Services (Cre	24.2	0.9%	12.1	0.4%	6.6	0.3%	3.3	0.1%	4.7	0.2%	16.1	0.6%	12.9	0.5%	5.7	0.3%	3.0	0.1%	
Pupil Personnel Services (Credential)	2.9	0.1%	2.3	0.1%	4.4	0.2%	5.6	0.2%	1.0	0.0%	2.5	0.1%	3.5	0.1%	5.2	0.3%	4.1	0.2%	
Reading	31.2	1.2%	31.8	1.1%	23.0	1.1%	21.5	0.6%	24.2	1.1%	34.3	1.3%	25.4	1.0%	16.9	0.8%	19.1	0.9%	
School/Educational Counseling	271.7	10.6%	313.6	11.1%	403.6	19.4%	429.4	12.9%	370.0	16.8%	269.6	10.2%	338.2	12.8%	416.2	20.7%	419.1	20.4%	
Single Subject (Credential)	144.6	5.6%	107.5	3.8%	109.1	5.2%	91.8	2.8%	103.8	4.7%	115.9	4.4%	95.0	3.6%	99.8	5.0%	91.0	4.4%	
Special Education	27.0	1.1%	26.4	0.9%	26.2	1.3%	25.6	0.8%	39.6	1.8%	28.5	1.1%	27.7	1.0%	24.4	1.2%	28.8	1.4%	
Special Emphasis	270.1	10.5%	285.6	10.1%	232.6	11.2%	209.3	6.3%	195.3	8.9%	260.3	9.9%	275.0	10.4%	211.4	10.5%	180.8	8.8%	
Special Emphasis: Advanced Teaching	47.8	1.9%	0.0	0.0%	0.0	0.0%	0.0	0.0%	0.0	0.0%	23.0	0.9%	0.0	0.0%	0.0	0.0%	0.0	0.0%	
Student Designed Majors	0.0	0.0%	0.0	0.0%	1.0	0.0%	0.0	0.0%	1.3	0.1%	0.0	0.0%	0.4	0.0%	0.9	0.0%	0.3	0.0%	
	1281.3	49.9%	1183.3	42.0%	1106.3	53.1%	1075.0	32.3%	962.5	43.7%	1170.7	44.5%	1108.2	41.8%	1046.1	52.1%	988.4	48.2%	
Major not Declared**	452.3	17.6%	763.7	27.1%	47.1	2.3%	1151.9	34.6%	14.2	0.6%	697.4	26.5%	697.4	26.3%	53.0	2.6%	19.6	1.0%	
Total Graduate Students	2568.7	100.0%	2819.1	100.0%	2083.2	100.0%	3327.1	100.0%	2205.0	100.0%	2632.9	100.0%	2652.5	100.0%	2009.8	100.0%	2051.5	100.0%	

**A- 13: Doctoral Student FTE by Major/Credential at All Campuses*
Fall 2005 - Fall 2009 and Academic Year 2005-06 through 2008-09**

Major	Fall 2005		Fall 2006		Fall 2007		Fall 2008		Fall 2009		IPEDS 2005-06		IPEDS 2006-07		IPEDS 2007-08		IPEDS 2008-09	
Clinical-Community Psychology (Ps)	66.2	19.4%	70.6	21.1%	73.9	25.8%	94.2	30.0%	99.7	31.9%	60.3	24.1%	61.1	25.1%	68.5	31.6%	77.5	33.2%
Educational/Org. Leadership/Managemen	202.9	59.4%	198.7	59.4%	159.0	55.5%	154.9	49.3%	141.4	45.3%	138.8	55.4%	140.1	57.5%	110.1	50.7%	108.6	46.5%
Professional Administrative Services (Ci	1.0	0.3%	1.1	0.3%	0.6	0.2%	1.4	0.4%	0.0	0.0%	0.8	0.3%	1.0	0.4%	0.4	0.2%	1.0	0.4%
Public Administration (DPA)	60.8	17.8%	63.1	18.9%	52.9	18.5%	62.4	19.9%	71.4	22.8%	43.5	17.3%	40.8	16.7%	37.9	17.5%	45.8	19.6%
	331.0	96.9%	333.5	99.7%	286.4	100.0%	312.9	99.5%	312.5	100.0%	243.3	97.1%	243.1	99.7%	217.0	100.0%	233.0	99.7%
Major not Declared	10.7	3.1%	1.0	0.3%	0.0	0.0%	1.5	0.5%	0.0	0.0%	7.4	2.9%	0.8	0.3%	0.0	0.0%	0.8	0.3%
Total Doctoral Majors	341.7	100.0%	334.5	100.0%	286.4	100.0%	314.4	100.0%	312.5	100.0%	250.7	100.0%	243.8	100.0%	217.0	100.0%	233.8	100.0%

**A- 14: First Professional Student FTE by Major at All Campuses*
Fall 2005 - Fall 2009 and Academic Year 2005-06 through 2008-09**

Major	Fall 2005		Fall 2006		Fall 2007		Fall 2008		Fall 2009		IPEDS 2005-06		IPEDS 2006-07		IPEDS 2007-08		IPEDS 2008-09	
Juris Doctor (JD)	364.0	100.0%	371.8	100.0%	434.8	100.0%	493.2	100.0%	567.6	100.0%	371.8	100.0%	308.5	100.0%	348.1	100.0%	398.6	100.0%
Total First Professional Majors	364.0	100.0%	371.8	100.0%	434.8	100.0%	493.2	100.0%	567.6	100.0%	371.8	100.0%	308.5	100.0%	348.1	100.0%	398.6	100.0%

* For explanation of FTE, see page 8.

** Non-degree professional development students are not included for Fall 2007 and later terms.

Source: Institutional Research Annual Census on November 15.

**A-15: Change in FTE by Campus/Program and by College*
Fall 2005 - Fall 2009**

By Campus/Program**	Fall 2005		Fall 2006		Fall 2007		Fall 2008		Fall 2009	
Main Campus Undergraduate	1,697.7	25.0%	1,635.7	24.0%	1,636.5	23.6%	1,504.6	20.6%	1,479.2	20.4%
Main Campus Graduate***	1,842.1	27.2%	1,843.8	27.1%	1,910.9	27.6%	2,088.1	28.6%	2,159.5	29.7%
CAPA	505.2	7.4%	442.3	6.5%	411.1	5.9%	408.2	5.6%	423.5	5.8%
Regional Campus Programs	2,264.4	33.4%	2,116.3	31.1%	2,027.0	29.3%	2,149.1	29.4%	1,988.2	27.4%
Others****	473.9	7.0%	768.5	11.3%	935.0	13.5%	1,162.4	15.9%	1,209.3	16.7%
	6,783.4	100.0%	6,806.5	100.0%	6,920.6	100.0%	7,312.3	100.0%	7,259.7	100.0%

By College*****	Fall 2005		Fall 2006		Fall 2007		Fall 2008		Fall 2009	
College of Arts & Sciences	1,470.7	21.7%	1,485.3	21.8%	1,439.6	20.8%	1,391.8	19.0%	1,356.0	18.7%
College of Business & Public Management	2,027.0	29.9%	1,998.0	29.4%	2,054.9	29.7%	2,312.8	31.6%	2,461.5	33.9%
College of Education & Org. Leadership	2,243.7	33.1%	2,070.5	30.4%	1,917.2	27.7%	1,853.6	25.3%	1,229.2	16.9%
College of Law	364.0	5.4%	371.8	5.5%	434.8	6.3%	493.2	6.7%	567.6	7.8%
Major not designed*****	677.9	10.0%	880.8	12.9%	1,074.2	15.5%	1,260.8	17.2%	1,651.7	22.7%
	6,783.3	100.0%	6,806.5	100.0%	6,920.6	100.0%	7,312.3	100.0%	7,266.0	100.0%

* For explanation of FTE, see page 8.

** The numbers of this table are calculated from the report of page 8.

*** This category includes Main Campus Graduates, Law, EdD, DPA, and PASC.

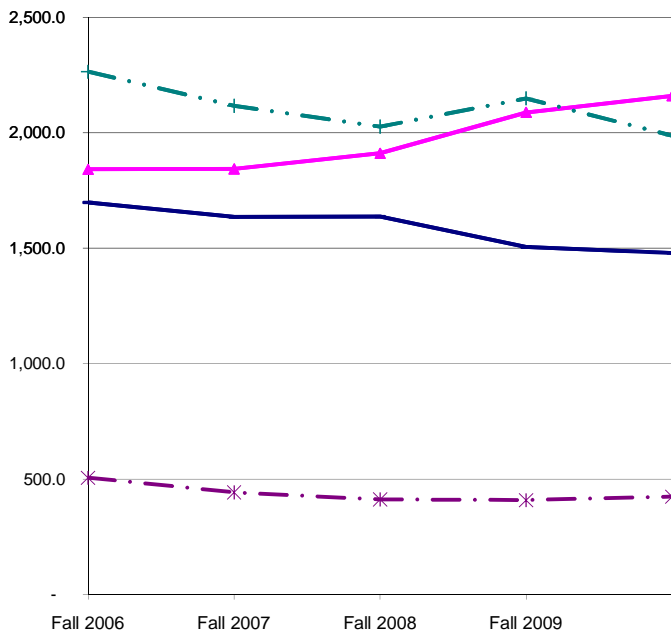
**** This category includes Other Programs, Special Programs (Professional Development), Overseas Programs, and Campus-Not-Designed of page 8.

***** The numbers on this table are based on the reports of page 9 and page 10.

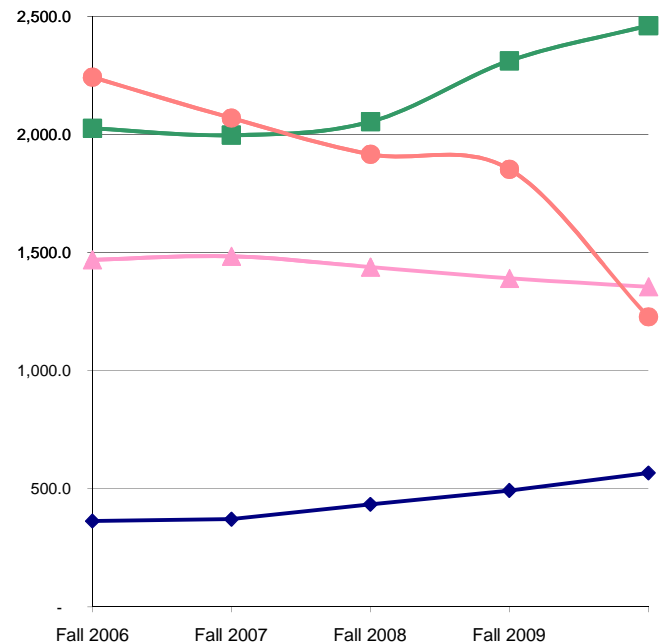
***** Non-degree professional degree students are included.

Source: Institutional Research Annual Census on November 15.

**Change in FTE by Campus/Program
Fall 2005 - Fall 2009**



**Change in FTE by College
Fall 2005 - Fall 2009**



— Main Campus Undergraduate
 - - Main Campus Graduate***
 . . CAPA
 - · - Regional Campus Programs

- - College of Arts & Sciences
 — College of Business & Public Management
 . . College of Education & Org. Leadership
 — College of Law

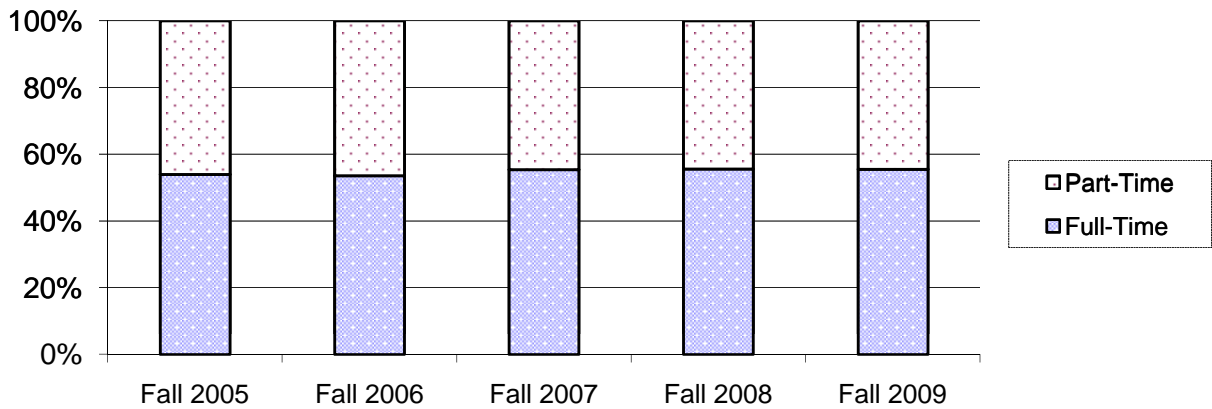
**A-16: Classification and Enrollment Status of All Students
Fall 2005 - Fall 2009**

Student Level	Fall 2005		Fall 2006		Fall 2007		Fall 2008		Fall 2009	
Freshman	790	9.5%	693	8.3%	732	9.9%	723	9.6%	793	10.6%
Sophomore	690	8.3%	616	7.4%	603	8.2%	586	7.8%	525	7.0%
Junior	1098	13.2%	1073	12.9%	999	13.6%	939	12.5%	961	12.8%
Senior	1789	21.5%	1717	20.6%	1662	22.5%	1674	22.2%	1563	20.9%
Graduate (Masters Level)	3184	38.3%	3455	41.5%	2612	35.4%	2789	37.0%	2784	37.2%
Doctoral	518	6.2%	511	6.1%	457	6.2%	470	6.2%	468	6.3%
First Professional	255	3.1%	263	3.2%	306	4.2%	349	4.6%	391	5.2%
Total	8324	100%	8328	100%	7371	100%	7530	100%	7485	100%

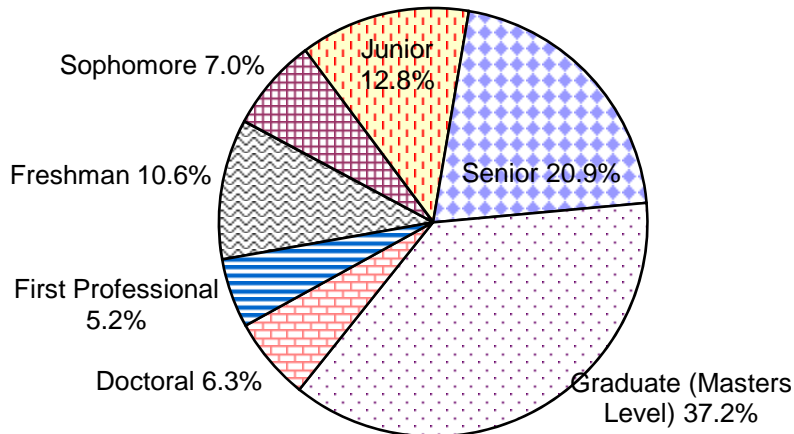
Enrollment Status	Fall 2005		Fall 2006		Fall 2007		Fall 2008		Fall 2009	
Full-Time	4492	54.0%	4465	53.6%	4087	55.4%	4189	55.6%	4166	55.5%
Part-Time	3832	46.0%	3863	46.4%	3284	44.6%	3341	44.4%	3341	44.5%
Total	8324	100%	8328	100%	7371	100%	7530	100%	7507	100%

Source: Institutional Research Annual Census on November 15. Non-degree professional development students are not included since Fall 2007.

**Enrollment Status of All Students
Fall 2005-Fall 2009**



Level of All Students - Fall 2009



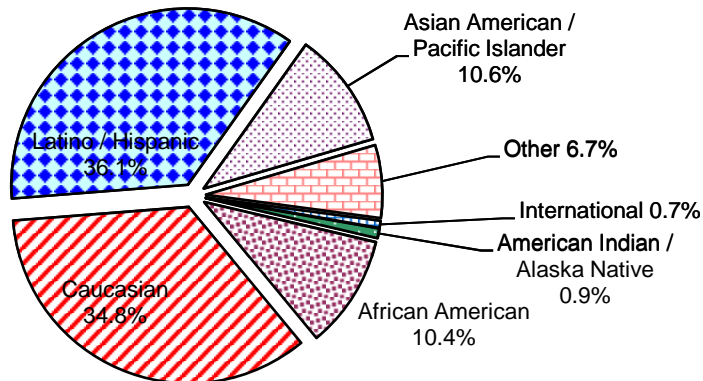
A-17: Ethnicity and Gender of All Students Fall 2005 - Fall 2009

Ethnicity	Fall 2005		Fall 2006		Fall 2007		Fall 2008		Fall 2009	
American Indian / Alaska Native	77	1.0%	64	0.9%	67	1.0%	70	1.1%	56	0.9%
African American	789	10.5%	740	10.9%	658	10.0%	660	10.0%	665	10.4%
Caucasian	2975	39.4%	2721	40.0%	2512	38.1%	2428	36.7%	2231	34.8%
Latino / Hispanic	2399	31.8%	2290	33.6%	2313	35.1%	2364	35.7%	2315	36.1%
Asian American / Pacific Islander	409	5.4%	436	6.4%	557	8.5%	655	9.9%	683	10.6%
Other	690	9.1%	338	5.0%	346	5.3%	383	5.8%	427	6.7%
International	204	2.7%	217	3.2%	134	2.0%	62	0.9%	42	0.7%
Total	7543	100%	6806	100%	6587	100%	6622	100%	6419	100%

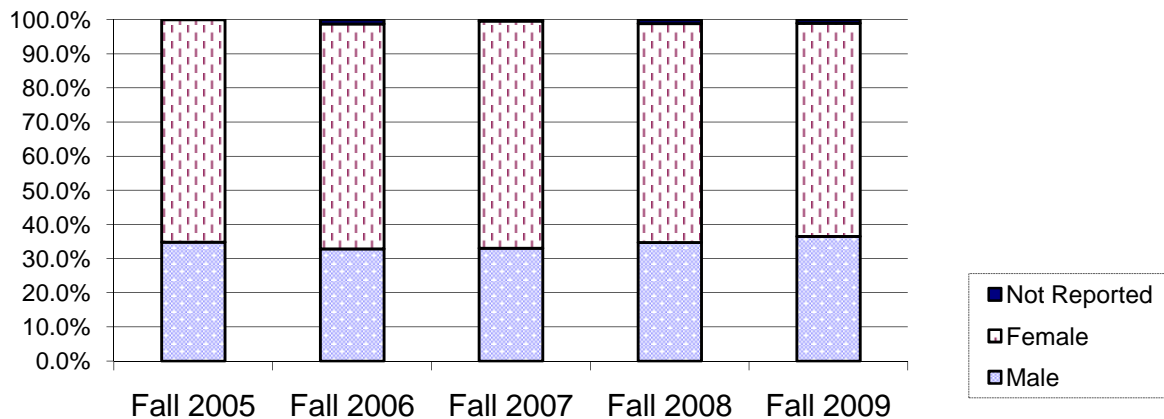
Gender	Fall 2005		Fall 2006		Fall 2007		Fall 2008		Fall 2008	
Male	2904	34.9%	2739	32.9%	2756	33.1%	2619	34.8%	2736	36.6%
Female	5421	65.1%	5487	65.9%	5538	66.5%	4825	64.1%	4669	62.4%
Not Reported	0	0.0%	98	1.2%	34	0.4%	86	1.1%	80	1.1%
Total	8325	100%	8324	100%	8328	100%	7530	100%	7485	100%

Source: Institutional Research Annual Census on November 15. Non-degree professional development students are not included since Fall 2007. For ethnicity, students with unknown race/ethnicity are excluded.

Ethnicity of All Students - Fall 2009



Gender of All Students Fall 2005- Fall 2009

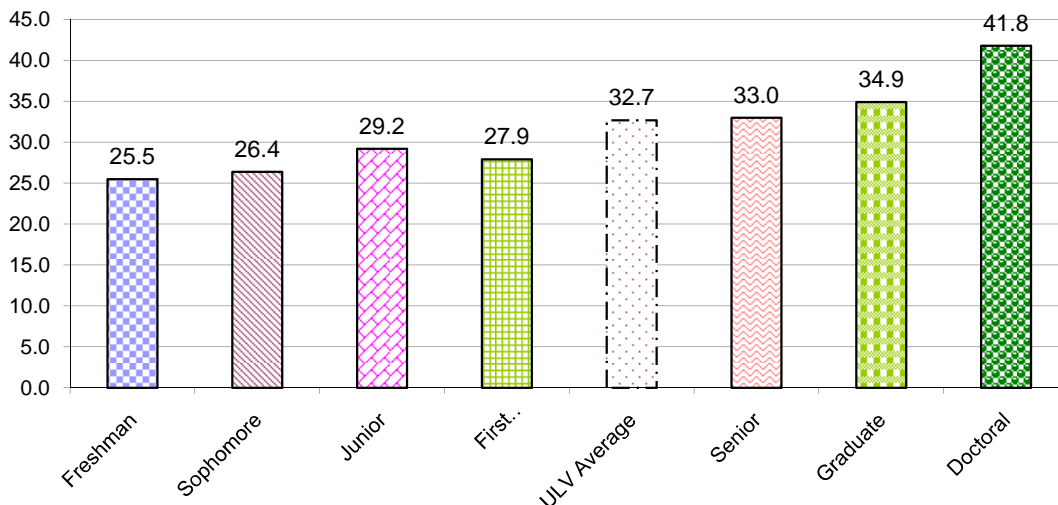


A-18: Student Age by Campus/Program and Class - Fall 2009

Main Campus Programs	Average	Under 20	Age 20 - 24	Age 25- 29	Age 30-39	40 or Over
Main Campus Undergraduate	20.7	532 99.6%	921 55.7%	63 3.2%	16 0.7%	7 0.3%
Main Campus Graduate	31.0	0 0.0%	311 18.8%	678 34.2%	407 17.0%	266 12.2%
DPA	42.6	0 0.0%	1 0.1%	10 0.5%	35 1.5%	62 2.8%
EdD	45.9	0 0.0%	1 0.1%	4 0.2%	66 2.8%	197 9.0%
PASC	-	0 0.0%	0 0.0%	0 0.0%	0 0.0%	0 0.0%
Law*	27.9	0 0.0%	101 6.1%	194 9.8%	76 3.2%	20 0.9%
		532 99.6%	1335 80.7%	949 47.8%	600 25.0%	552 25.2%
Regional Campus Administration (RCA)						
Bakersfield Credential	34.1	0 0.0%	7 0.4%	31 1.6%	27 1.1%	24 1.1%
CAPA	36.2	0 0.0%	29 1.8%	193 9.7%	244 10.2%	237 10.8%
Education**	34.3	0 0.0%	30 1.8%	89 4.5%	128 5.3%	86 3.9%
ULV Online	36.4	0 0.0%	16 1.0%	48 2.4%	110 4.6%	92 4.2%
Teacher Credential (RCA Ed.)	33.3	0 0.0%	21 1.3%	54 2.7%	43 1.8%	37 1.7%
		0 0.0%	96 5.8%	384 19.3%	525 21.9%	452 20.7%
Professional Development Centers						
Central Coast	32.9	1 0.2%	28 1.7%	20 1.0%	30 1.3%	23 1.1%
High Desert Victorville	35.7	0 0.0%	7 0.4%	22 1.1%	33 1.4%	28 1.3%
Inland Empire	37.8	0 0.0%	15 0.9%	55 2.8%	130 5.4%	128 5.9%
Kern County/Bakersfield	33.6	0 0.0%	25 1.5%	45 2.3%	57 2.4%	35 1.6%
Orange County	38.5	0 0.0%	14 0.8%	40 2.0%	83 3.5%	112 5.1%
San Fernando Valley	38.6	0 0.0%	9 0.5%	57 2.9%	144 6.0%	151 6.9%
Ventura County	35.5	0 0.0%	18 1.1%	29 1.5%	43 1.8%	41 1.9%
		1 0.2%	116 6.6%	268 13.5%	520 21.7%	518 23.7%
Residence Centers						
Point Mugu	30.8	1 0.2%	80 4.8%	108 5.4%	112 4.7%	51 2.3%
Vandenberg	35.6	0 0.0%	9 0.5%	14 0.7%	24 1.0%	22 1.0%
		1 0.2%	89 5.4%	122 6.1%	136 5.7%	73 3.3%
Other and Special Programs						
Ecumenical Centers (ABTC/ECBCS)	41.4	0 0.0%	2 0.1%	1 0.1%	9 0.4%	14 0.6%
EPIC	-	0 0.0%	0 0.0%	0 0.0%	0 0.0%	0 0.0%
		0 0.0%	2 0.1%	1 0.1%	9 0.4%	14 0.6%
Professional Development/Travel Learning	38.7	0 0.0%	16 1.0%	261 13.1%	610 25.4%	579 26.5%
Enrollment Grand Total	32.9	534 100.0%	1654 99.6%	1985 100.0%	2400 100.0%	2188 100.0%

Source: Institutional Research Annual Census on November 15.

Student Average Age by Class



A-19: International Student Profile: Fall 2005 - Fall 2009

By Gender	Fall 2005		Fall 2006		Fall 2007		Fall 2008		Fall 2009	
	Count	%	Count	%	Count	%	Count	%	Count	%
Male	103	48.1%	123	47.7%	136	45.5%	198	54.4%	253	56.2%
Female	111	51.9%	135	52.3%	163	54.5%	166	45.6%	197	43.8%
Grand Total	214	100.0%	258	100.0%	299	100.0%	364	100.0%	450	100.0%

By Student Level

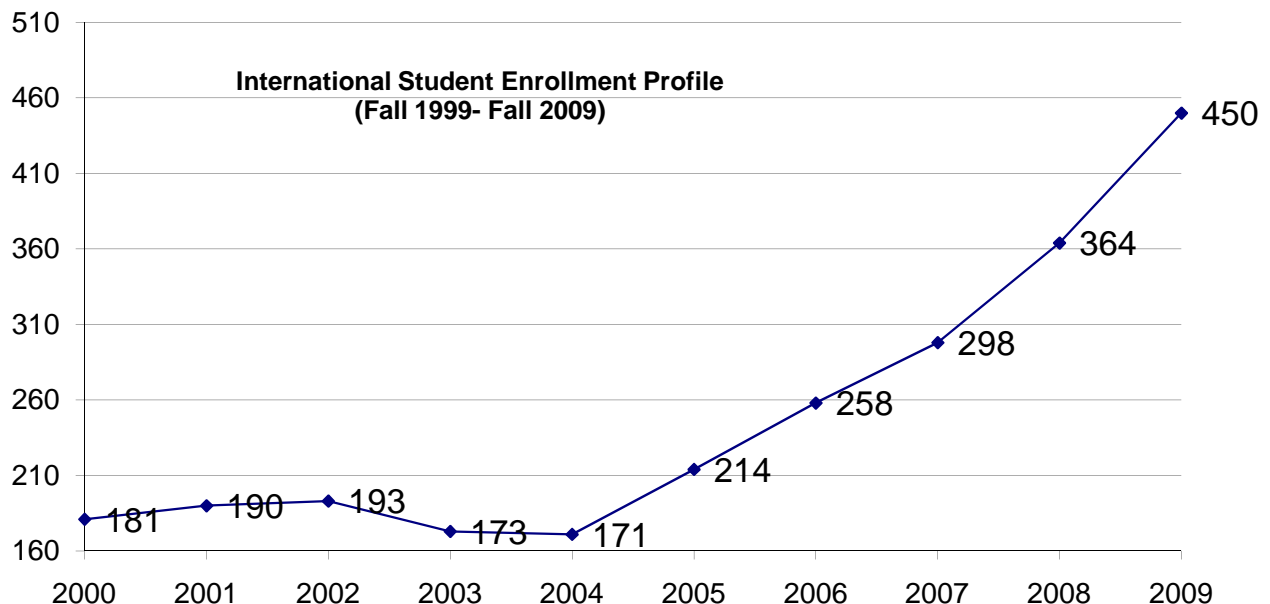
Undergraduate	48	22.4%	30	11.6%	29	9.7%	43	11.8%	57	12.7%
Masters	144	67.3%	212	82.2%	257	86.2%	305	83.8%	368	81.8%
Doctoral and Juris Doctor	22	10.3%	16	6.2%	12	4.0%	16	4.4%	25	5.6%
Grand Total	214	100.0%	258	100.0%	298	100.0%	364	100.0%	450	100.0%

By Leading Majors

Business Administration(MBA)	147	68.7%	200	77.5%	227	76.2%	262	72.0%	304	67.6%
Leadership & Management	0	0.0%	0	0.0%	0	0.0%	0	0.0%	50	11.1%
Juris Doctor	12	5.6%	8	3.1%	5	1.7%	6	1.6%	9	2.0%
Public Administration (DPA)	10	4.7%	8	3.1%	5	1.7%	9	2.5%	15	3.3%
Other Majors	45	21.0%	42	16.3%	61	20.5%	87	23.9%	72	16.0%
Grand Total	214	100.0%	258	100.0%	298	100.0%	364	100.0%	450	100.0%

By Countries/Regions with Largest Representation

Taiwan	71	41.5%	126	51.0%	163	54.7%	178	48.9%	179	39.8%
Thailand	43	25.1%	59	23.9%	57	19.1%	49	13.5%	53	11.8%
Saudi Arabia	1	0.6%	0	0.0%	2	0.7%	30	8.2%	72	16.0%
China	8	3.7%	9	3.5%	12	3.5%	27	7.4%	63	14.0%
Japan	12	7.0%	10	4.0%	6	2.0%	10	2.7%	16	3.6%
India	3	1.8%	0	0.0%	5	1.7%	9	2.5%	4	0.9%
Canada	9	5.3%	6	2.4%	10	3.4%	8	2.2%	10	2.2%
Other	51	29.8%	37	15.0%	43	14.4%	53	14.6%	53	11.8%
Grand Total	171	114.8%	247	99.8%	298	99.5%	364	100.0%	450	100.0%



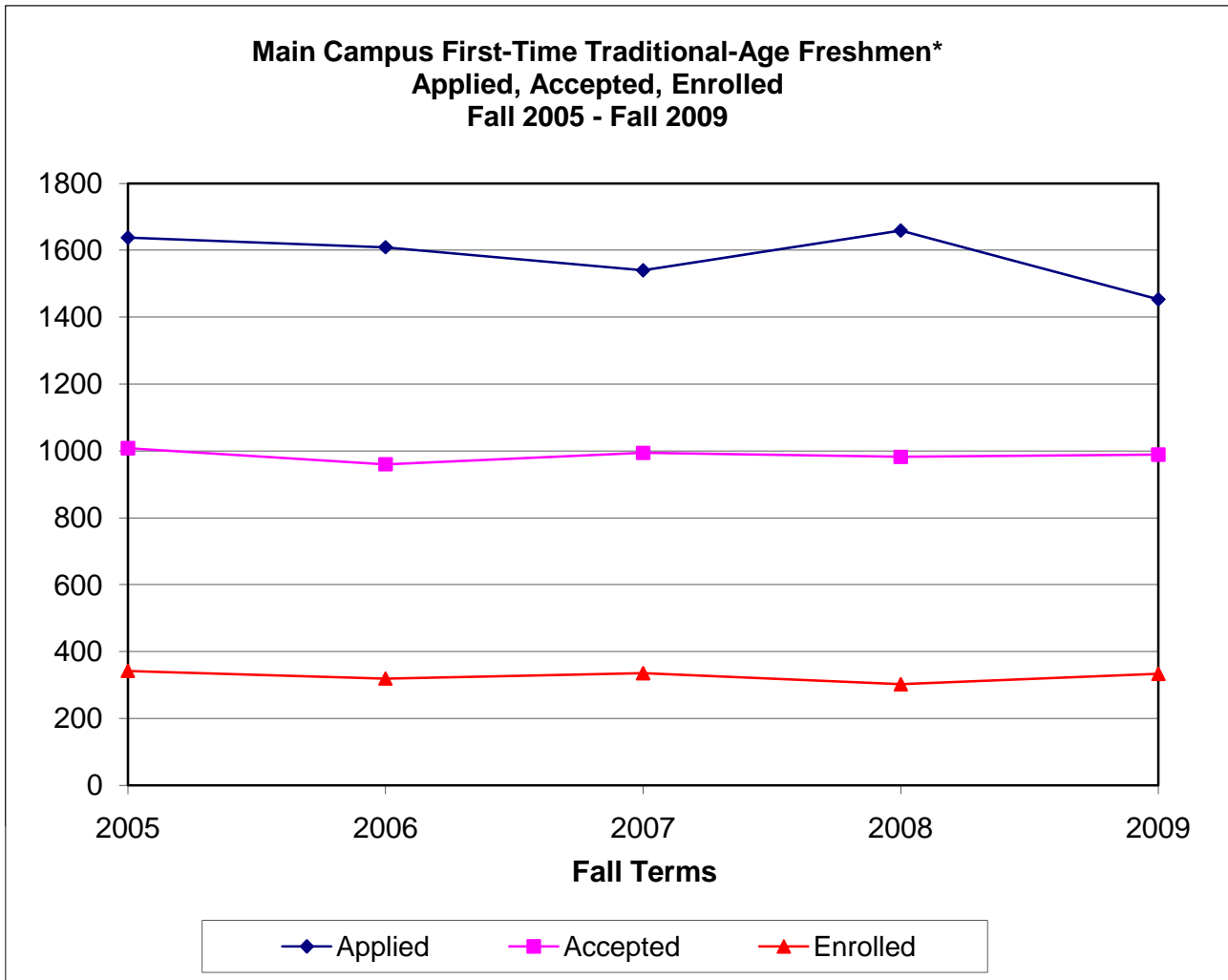
Source: International and Study Abroad Center.

B.
ADMISSIONS
&
NEW
STUDENTS

All statistics are based on data from La Verne's census on November 15 for each year specified, unless otherwise noted.

B-1: Admission Statistics for Main Campus First-Time Traditional-Age Freshmen*

Application, Acceptance, and Enrollment Statistics Fall 2005 - Fall 2009



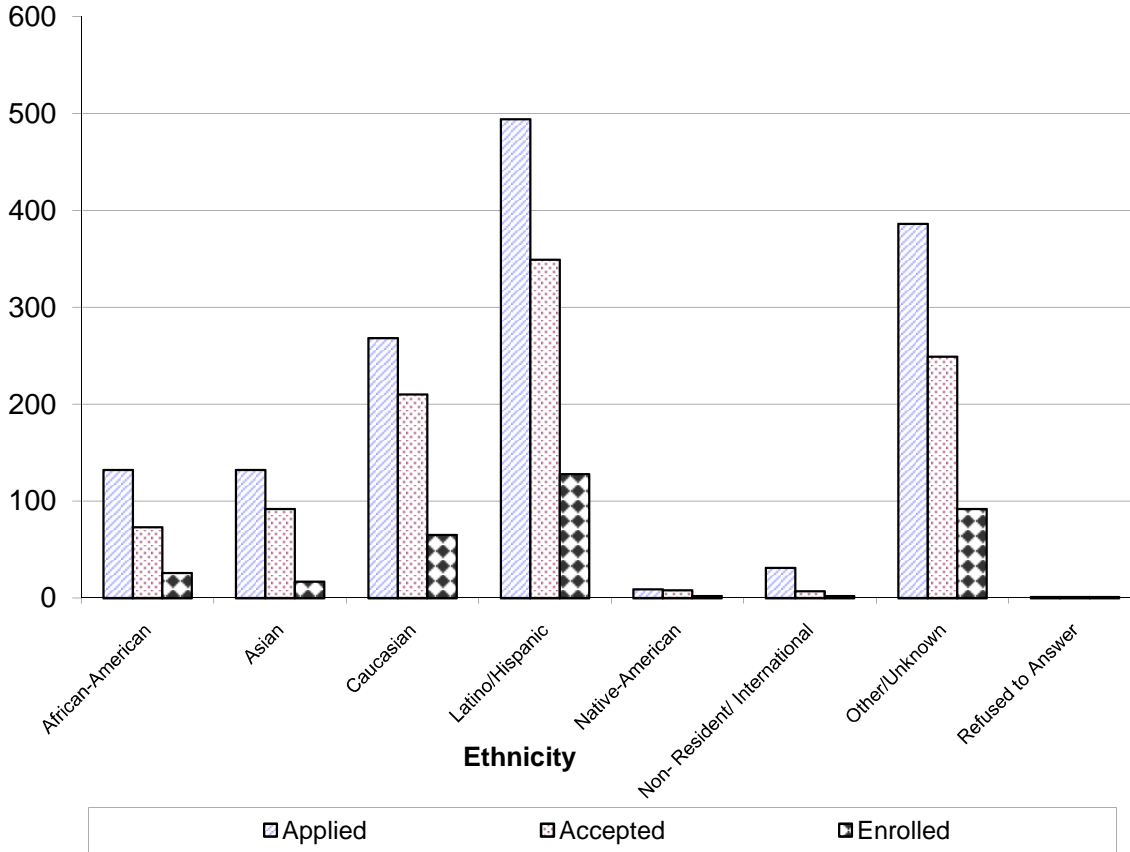
Fall	Applied	Accepted	Acceptance Rate	Enrolled	Yield Rate
2005	1638	1008	62%	342	34%
2006	1609	960	60%	319	33%
2007	1540	994	65%	335	34%
2008	1659	982	59%	302	31%
2009	1453	989	68%	333	34%

* Does not include Advanced Freshmen, who have taken less than 32 college credits after graduating from high school.

Source: Institutional Research Admission Census on October 15, except the "enrolled" for 2006 and after, which are from Institutional Research Census on November 15 of each year.

B-2: Application, Acceptance, and Enrollment Statistics by Ethnicity of Main Campus First-Time Traditional-Age Freshmen

**Main Campus First-Time Traditional-Age Freshmen*
Applied, Accepted, Enrolled
Fall 2009**



Ethnicity	Yield Rate Fall 2003- Fall 2009						Fall 2009				
	2003	2004	2005	2006	2007	2008	Applied	Accepted	Enrolled	Acceptance Rate	Yield Rate
African-American	32%	33%	32%	28%	29%	32%	132	73	26	55%	36%
Asian	20%	17%	20%	20%	21%	19%	132	92	17	70%	18%
Caucasian	39%	40%	32%	55%	35%	24%	268	210	65	78%	31%
Latino/Hispanic	43%	44%	40%	40%	35%	35%	494	349	128	71%	37%
Native-American	50%	75%	0%	0%	0%	46%	9	8	2	89%	25%
Non-Resident/ International	-	0	10%	25%	22%	20%	31	7	2	23%	29%
Other/Unknown	30%	41%	38%	26%	28%	36%	386	249	92	65%	37%
Refused to Answer	-	33%	29%	50%	40%	-	1	1	1	100%	100%

Source: Institutional Research Admission Census on October 15, except the "enrolled" for 2006 and after, which are from Institutional Research Census on November 15 of each year.

**B-3: New Main Campus Traditional-Age Students by Gender
Fall 2005 - Fall 2009**

New First-Time Freshmen

Gender	Fall 2005		Fall 2006		Fall 2007		Fall 2008		Fall 2009	
Male	106	30.1%	111	34.8%	116	34.5%	133	44.0%	145	43.5%
Female	246	69.9%	208	65.2%	220	65.5%	169	56.0%	188	56.5%
Total	352	100.0%	319	100.0%	336	100.0%	302	100.0%	333	100.0%

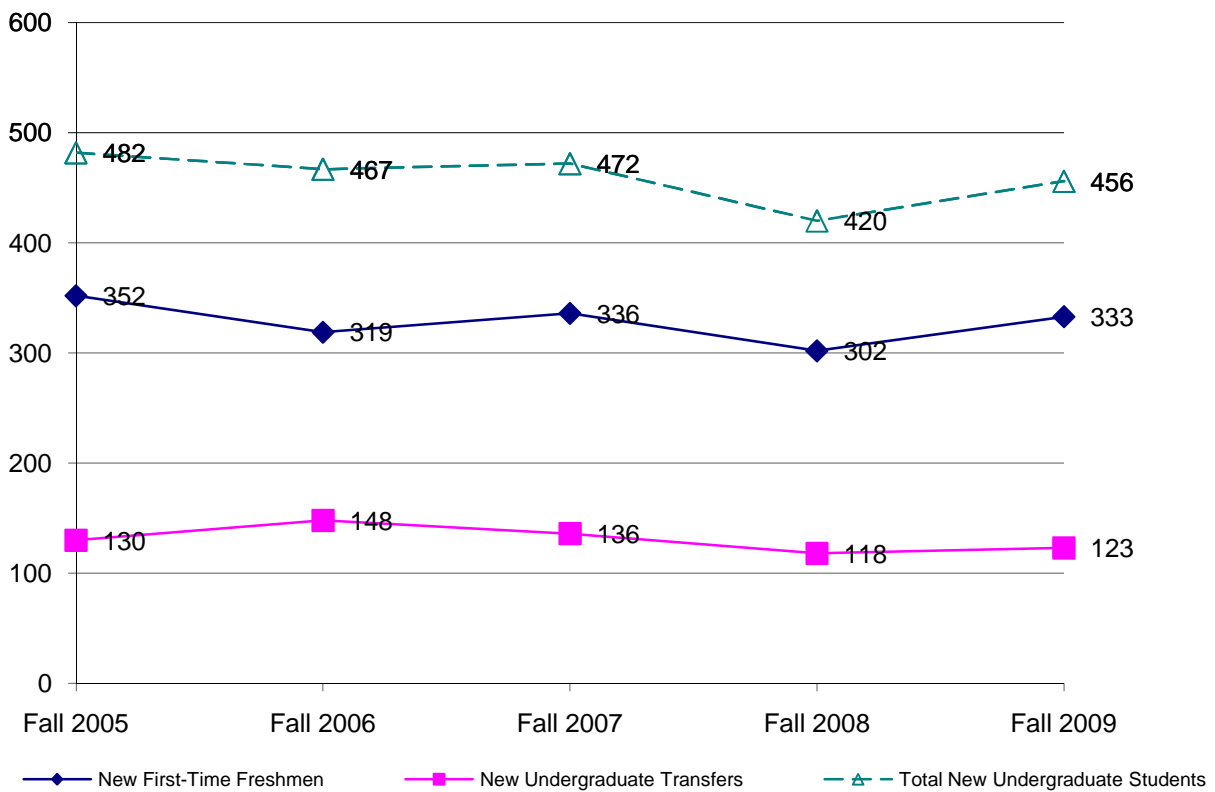
New Undergraduate Transfers

Male	56	43.1%	74	50.0%	62	45.6%	54	45.8%	68	55.3%
Female	74	56.9%	74	50.0%	74	54.4%	64	54.2%	55	44.7%
Total	130	100.0%	148	100.0%	136	100.0%	118	100.0%	123	100.0%

Total New Undergraduate Students

Male	162	33.6%	185	39.6%	178	37.7%	187	44.5%	213	46.7%
Female	320	66.4%	282	60.4%	294	62.3%	233	55.5%	243	53.3%
Total New Students	482	100%	467	100%	472	100%	420	100%	456	100%

New Main Campus Undergraduate Enrollment (Fall 2005 - Fall 2009)



Source: Fall 2002-Fall 2005, Institutional Research Admission Census on October 15; Fall 2006 and after, Institutional Research Annual Census on November 15 of each year.

**B-4: Main Campus New Traditional-Age Students by Ethnicity
Fall 2005 - Fall 2009**

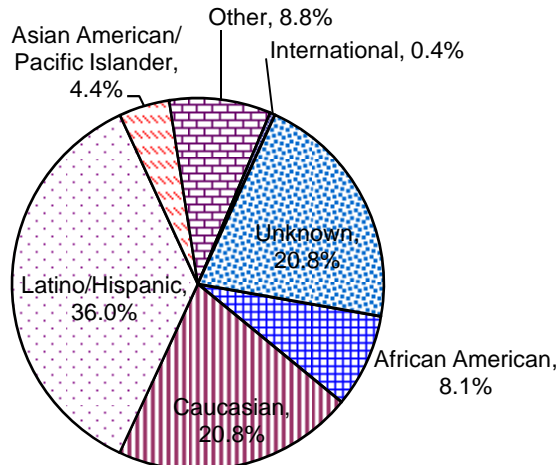
New Traditional-Age Freshmen

Ethnicity	Fall 2005		Fall 2006		Fall 2007		Fall 2008		Fall 2009	
	Count	%	Count	%	Count	%	Count	%	Count	%
American Indian/ Alaskan Native	0	0.0%	0	0.0%	4	1.2%	6	2.0%	2	0.6%
African American	33	9.4%	23	7.2%	18	5.4%	25	8.3%	26	7.8%
Caucasian	107	30.4%	98	30.7%	97	28.9%	59	19.5%	65	19.5%
Latino/Hispanic	135	38.4%	138	43.3%	152	45.2%	121	40.1%	128	38.4%
Asian American/ Pacific Islander	18	5.1%	16	5.0%	11	3.3%	15	5.0%	17	5.1%
Other	25	7.1%	16	5.0%	21	6.3%	18	6.0%	28	8.4%
International	0	0.0%	4	1.3%	2	0.6%	6	2.0%	2	0.6%
Unknown	34	9.7%	24	7.5%	31	9.2%	52	17.2%	65	19.5%
Total	352	100%	319	100%	336	100%	302	100%	333	100%

New Traditional-Age Transfers

Ethnicity	Fall 2005		Fall 2006		Fall 2007		Fall 2008		Fall 2009	
	Count	%	Count	%	Count	%	Count	%	Count	%
American Indian/ Alaskan Native	1	0.8%	0	0.0%	0	0.0%	1	0.8%	1	0.8%
African American	17	13.1%	18	12.2%	10	7.4%	11	9.3%	11	8.9%
Caucasian	43	33.1%	60	40.5%	49	36.0%	23	19.5%	30	24.4%
Latino/Hispanic	45	34.6%	36	24.3%	47	34.6%	36	30.5%	36	29.3%
Asian American/ Pacific Islander	5	3.8%	8	5.4%	5	3.7%	3	2.5%	3	2.4%
Other	2	1.5%	3	2.0%	5	3.7%	8	6.8%	12	9.8%
International	9	6.9%	2	1.4%	7	5.1%	4	3.4%	0	0.0%
Unknown/Refuse to Answer	8	6.2%	21	14.2%	13	9.6%	32	27.1%	30	24.4%
Total	130	100%	148	100%	136	100%	118	100%	123	100%

Ethnicity of New Traditional-Age Freshmen and Transfer Students - Fall 2009

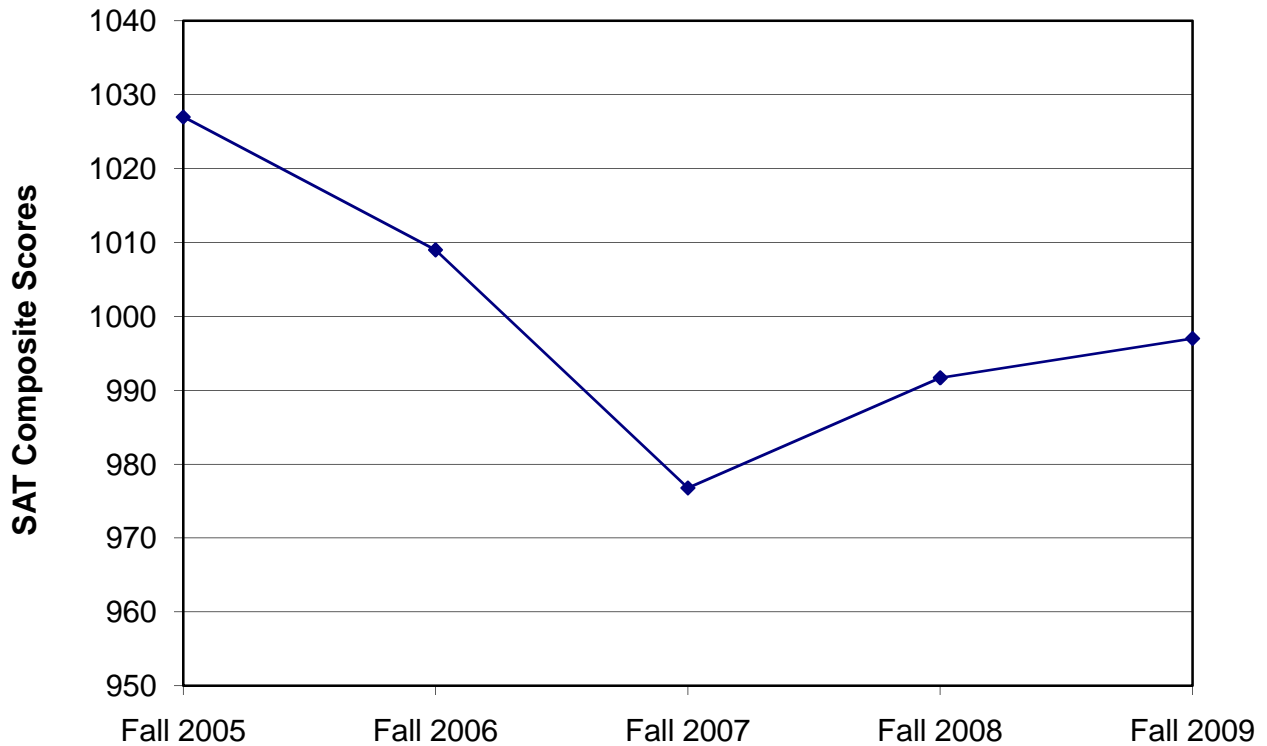


Source: Fall 2002-Fall 2005, Institutional Research Admission Census on October 15; Fall 2006 and after, Institutional Research Annual Census on November 15 of each year.

**B-5: New Main Campus Traditional-Age Freshman SAT Scores
Fall 2005 - Fall 2009**

Test Scores	Fall 2005		Fall 2006		Fall 2007		Fall 2008		Fall 2009	
	Mean	Median	Mean	Median	Mean	Median	Mean	Median	Mean	Median
SAT Math	515	510	505	500	518	480	502	500	498	490
SAT Verbal	512	510	505	500	486	480	489	490	497	490
SAT Composite	1027	1020	1009	1000	977	980	992	990	997	990

**Mean SAT Composite Scores
for New Main Campus Traditional-Age Freshmen
Fall 2005 - Fall 2009**



Source: Fall 2002-Fall 2005, Institutional Research Admission Census on October 15; Fall 2006 and after, Institutional Research Annual Census on November 15 and Institutional Research Admission Census on October 15.

**B-6: New Main Campus Undergraduate Students by Entrance GPA
Fall 2005 - Fall 2009**

New Main Campus Traditional-Age Freshmen

GPA Range	Fall 2005	Fall 2006	Fall 2007	Fall 2008	Fall 2009
3.50 - 4.00+	171	146	117	117	115
3.00 - 3.49	119	112	144	94	130
2.50 - 2.99	55	56	63	64	76
2.00 - 2.49	3	2	9	11	5
Below 2.00	0	0	1	0	0
GPA not reported	4	3	2	16	7
	352	319	336	302	333
Mean Freshmen GPA	3.46	3.45	3.35	3.35	3.32

New Main Campus Traditional-Age Transfers

GPA Range	Fall 2005	Fall 2006	Fall 2007	Fall 2008	Fall 2009
3.50 - 4.00+	14	19	19	16	12
3.00 - 3.49	43	41	40	38	45
2.50 - 2.99	51	67	41	42	46
2.00 - 2.49	11	18	22	8	12
Below 2.00	0	0	0	0	0
GPA not reported	11	3	14	14	8
	130	148	136	118	123
Mean Transfer GPA	2.99	2.97	2.97	3.04	2.98

Source: Fall 2002-Fall 2005, Institutional Research Admission Census on October 15; Fall 2006 and after, Institutional Research Annual Census on November 15 and Institutional Research Admission Census on October 15.

**B-7: Top 15 High School Origins of New Main Campus First-Time Traditional-Age Freshmen
Fall 2005 - Fall 2009**

High School Origin	Fall 2005	Fall 2006	Fall 2007	Fall 2008	Fall 2009
Bonita High School	8	14	15	10	8
Bishop Amat Memorial High Sch	8	7	7	9	6
Damien High School	3	13	7	9	8
Alta Loma High School	7	4	9	8	4
Claremont High School	5	5	10	7	0
Colony High School				6	4
Charter Oak High School	2	8	6	6	0
Upland High School	12	10	5	6	5
Diamond Ranch High School	3	6	3	6	2
Rancho Cucamonga High School	2	4	4	6	3
Coachella Valley High School		1	1	6	2
South Hills High School	7	7	6	6	4
Saint Lucys Priory School	3	5	11	5	8
Glendora High School	8	6	11	5	8
Chaffey High School	5	12	5	5	0
Covina High School	8	4	5	5	4
Other Schools	322	246	214	197	267
Total	403	352	319	302	333

**B-8: Top 15 College/University Origins of New Main Campus Traditional-Age Undergraduate Transfers
Fall 2005 - Fall 2009**

College/University	Fall 2005	Fall 2006	Fall 2007	Fall 2008	Fall 2009
Citrus College	14	9	15	19	23
Mount San Antonio College	22	10	10	17	13
Chaffey Community College	6	5	10	17	14
Riverside Community College	5	4	2	3	2
Azusa Pacific University	4	2	7	3	1
Pasadena City College	9	6	6	3	3
Orange Coast College	1	3	3	2	2
Fullerton College	4	3	2	2	3
Rio Hondo College	3	6	5	2	1
CSU, Los Angeles				2	
Fresno City College				2	
San Joaquin Valley College		3		2	4
New Mexico Military Institute				1	
Everest College		2	1	1	
College of the Desert				1	
Other Colleges/Universities	85	77	87	41	57
Total	153	130	148	118	123

Source: Fall 2002-Fall 2005, Institutional Research Admission Census on October 15; Fall 2006 and after, Institutional Research Annual Census on November 15.

**B-9: New Main Campus Traditional-Age Students by Geographic Region
Fall 2005 - Fall 2009**

U.S. State	Fall 2005	Fall 2006	Fall 2007	Fall 2008	Fall 2009
Arizona	3	4	0	2	3
California	451	429	444	396	425
Colorado	0	2	1	0	0
Connecticut	0	0	0	1	1
Florida	1	1	1	0	0
Guam	0	0	0	1	0
Hawaii	3	8	1	2	2
Idaho	0	0	0	0	0
Illinois	0	1	0	0	0
Indiana	0	1	0	0	0
Kansas	0	0	0	0	0
Kentucky	0	0	0	0	0
Massachusetts	0	0	1	0	0
Maryland	0	1	0	0	2
Minnesota	0	0	0	1	0
Missouri	0	0	0	1	0
Nevada	2	0	2	3	2
New Hampshire	0	0	0	0	0
New Jersey	0	0	1	0	1
New Mexico	0	0	0	0	0
New York	2	1	1	0	2
North Carolina	0	0	0	1	0
Ohio	0	1	0	2	0
Oklahoma	0	0	0	1	0
Oregon	0	4	5	1	1
Pennsylvania	0	0	2	0	0
Texas	0	0	0	2	0
Utah	0	1	2	0	0
Vermont	0	0	0	0	1
Virginia	1	0	1	0	0
Washington	8	5	2	3	2
Wyoming	0	0	0	1	0
Unknown U.S. State	2	8	8	2	5
Total U.S. Residents	473	467	472	420	447

Source: Fall 2002-Fall 2005, Institutional Research Admission Census on October 15; Fall 2006 and after, Institutional Research Annual Census on November 15 and Institutional Research Admission Census on October 15.

**B-10: Main Campus New Traditional-Age International Students by Geographic Region
Fall 2005 - Fall 2009**

Foreign Country/Region	Fall 2005	Fall 2006	Fall 2007	Fall 2008	Fall 2009
Canada	0	1	0	0	0
China	0	1	1	2	3
Ecuador	1	0	0	0	0
France	2	0	0	0	0
Germany	0	0	0	0	0
Indonesia	0	0	0	0	0
Japan	2	1	0	0	0
Lebanon	0	0	0	0	0
Mexico	1	0	0	0	0
Philippines	0	1	0	0	0
Saudi Arabia	0	0	0	11	3
Spain	1	0	0	0	0
Taiwan	0	2	0	1	1
Thai	0	0	0	1	0
Turkey	0	0	1	0	0
United Kingdom	2	0	0	0	0
Ukraine	0	0	1	0	0
Vietnam	0	0	0	1	0
Unknown Foreign Country	0	0	0	0	0
Total Foreign Students	9	6	3	16	7

Source: International and Study Abroad Center.

**B-11: New Main Campus Traditional-Age Freshmen by Major
Fall 2005 - Fall 2009**

College Major	Fall 2005 Count	Fall 2005 %	Fall 2006 Count	Fall 2006 %	Fall 2007 Count	Fall 2007 %	Fall 2008 Count	Fall 2008 %	Fall 2009 Count	Fall 2009 %
Arts & Sciences										
Anthropology	2	0.6%	3	0.9%	0	0.0%	2	0.7%	1	0.3%
Art/Art History	3	0.9%	3	0.9%	3	0.9%	2	0.7%	5	1.5%
Athletic Training	11	3.1%	12	3.8%	12	3.6%	14	4.6%	6	1.8%
Behavioral Science	1	0.3%	0	0.0%	2	0.6%	1	0.3%	2	0.6%
Biology	24	6.8%	26	8.2%	29	8.6%	20	6.6%	39	11.7%
Broadcasting	7	2.0%	7	2.2%	6	1.8%	3	1.0%	4	1.2%
Chemistry	5	1.4%	8	2.5%	2	0.6%	4	1.3%	4	1.2%
Communications	18	5.1%	19	6.0%	15	4.5%	11	3.6%	8	2.4%
Comparative Literature	1	0.3%	0	0.0%	0	0.0%	0	0.0%	0	0.0%
Computer Science & Engineering	5	1.4%	9	2.8%	4	1.2%	11	3.6%	10	3.0%
Criminology	20	5.7%	20	6.3%	11	3.3%	17	5.6%	12	3.6%
English	5	1.4%	6	1.9%	9	2.7%	4	1.3%	7	2.1%
Environmental Biology/Management	0	0.0%	1	0.3%	0	0.0%	1	0.3%	0	0.0%
German	0	0.0%	0	0.0%	0	0.0%	0	0.0%	0	0.0%
History	6	1.7%	7	2.2%	4	1.2%	7	2.3%	7	2.1%
International Business & Language	2	0.6%	3	0.9%	2	0.6%	2	0.7%	4	1.2%
International Studies	0	0.0%	0	0.0%	2	0.6%	1	0.3%	1	0.3%
Italian Studies	0	0.0%	0	0.0%	0	0.0%	0	0.0%	0	0.0%
Journalism	10	2.8%	9	2.8%	10	3.0%	9	3.0%	7	2.1%
Legal Studies	15	4.3%	2	0.6%	5	1.5%	4	1.3%	5	1.5%
Liberal Arts	4	1.1%	3	0.9%	1	0.3%	5	1.7%	1	0.3%
Mathematics	6	1.7%	3	0.9%	3	0.9%	5	1.7%	4	1.2%
Movement & Sports Science	10	2.8%	3	0.9%	9	2.7%	8	2.6%	9	2.7%
Music	0	0.0%	0	0.0%	2	0.6%	0	0.0%	1	0.3%
Photography	0	0.0%	0	0.0%	0	0.0%	0	0.0%	1	0.3%
Philosophy	2	0.6%	0	0.0%	1	0.3%	1	0.3%	0	0.0%
Physics	0	0.0%	1	0.3%	0	0.0%	0	0.0%	0	0.0%
Political Science	11	3.1%	10	3.1%	13	3.9%	15	5.0%	10	3.0%
Psychology	28	8.0%	29	9.1%	27	8.0%	24	7.9%	25	7.5%
Religion/Philosophy	0	0.0%	2	0.6%	1	0.3%	0	0.0%	0	0.0%
Social Science	1	0.3%	0	0.0%	1	0.3%	1	0.3%	1	0.3%
Sociology	4	1.1%	3	0.9%	6	1.8%	1	0.3%	3	0.9%
Spanish	2	0.6%	0	0.0%	1	0.3%	0	0.0%	1	0.3%
Speech Communication	0	0.0%	1	0.3%	6	1.8%	0	0.0%	0	0.0%
Theatre Arts	9	2.6%	6	1.9%	3	0.9%	8	2.6%	8	2.4%
	212	60.2%	196	61.4%	190	56.5%	181	59.9%	186	55.9%
Business & Public Management										
Accounting	2	0.6%	4	1.3%	8	2.4%	6	2.0%	6	1.8%
Business Administration/Management	31	8.8%	52	16.3%	55	16.4%	47	15.6%	46	13.8%
Economics	0	0.0%	2	0.6%	4	1.2%	5	1.7%	2	0.6%
E-Commerce	1	0.3%	1	0.3%	0	0.0%	4	1.3%	3	0.9%
Organizational Management	0	0.0%	0	0.0%	0	0.0%	0	0.0%	1	0.3%
Marketing	3	0.9%	0	0.0%	0	0.0%	0	0.0%	0	0.0%
Public Administration	2	0.6%	0	0.0%	2	0.6%	1	0.3%	1	0.3%
	39	11.1%	59	18.5%	69	20.5%	63	20.9%	59	17.7%
Education & Organizational Leadership										
Child Development	6	1.7%	1	0.3%	6	1.8%	5	1.7%	3	0.9%
Liberal Studies	20	5.7%	24	7.5%	28	8.3%	17	5.6%	15	4.5%
	26	7.4%	25	7.8%	34	10.1%	22	7.3%	18	5.4%
College not Assigned										
Major not declared	75	21.3%	39	12.2%	43	12.8%	36	11.9%	70	21.0%
Grand Total All Students	352	100%	319	100%	336	100%	302	100%	333	100%

Source: Fall 2002-Fall 2005, Institutional Research Admission Census on October 15; Fall 2006 and after, Institutional Research Annual Census on November 15.

**B-12: New Main Campus Traditional-Age Transfers by Major
Fall 2005 - Fall 2009**

College Major	Fall 2005		Fall 2006		Fall 2007		Fall 2008		Fall 2009	
	Count	%	Count	%	Count	%	Count	%	Count	%
Arts & Sciences										
Anthropology	0	0.0%	0	0.0%	0	0.0%	0	0.0%	1	0.8%
Art/Art History	1	0.8%	2	1.4%	3	2.2%	0	0.0%	0	0.0%
Athletic Training	4	3.1%	1	0.7%	1	0.7%	1	0.8%	4	3.3%
Behavioral Science	1	0.8%	1	0.7%	0	0.0%	0	0.0%	0	0.0%
Biology	1	0.8%	10	6.8%	3	2.2%	5	4.2%	9	7.3%
Broadcasting	9	6.9%	2	1.4%	2	1.5%	4	3.4%	2	1.6%
Chemistry	0	0.0%	1	0.7%	1	0.7%	0	0.0%	0	0.0%
Communications	4	3.1%	9	6.1%	12	8.8%	4	3.4%	4	3.3%
Comparative Literature	0	0.0%	0	0.0%	0	0.0%	0	0.0%	0	0.0%
Computer Science & Engineering	0	0.0%	2	1.4%	1	0.7%	3	2.5%	3	2.4%
Criminology	6	4.6%	4	2.7%	6	4.4%	2	1.7%	6	4.9%
English	4	3.1%	1	0.7%	1	0.7%	5	4.2%	3	2.4%
French	0	0.0%	0	0.0%	4	2.9%	0	0.0%	0	0.0%
History	3	2.3%	5	3.4%	1	0.7%	3	2.5%	3	2.4%
International Business & Language	2	1.5%	0	0.0%	6	4.4%	2	1.7%	2	1.6%
International Studies	0	0.0%	2	1.4%	1	0.7%	0	0.0%	2	1.6%
Journalism	0	0.0%	2	1.4%	0	0.0%	2	1.7%	2	1.6%
Legal Studies/Paralegal Studies	6	4.6%	5	3.4%	2	1.5%	0	0.0%	0	0.0%
Liberal Arts	4	3.1%	1	0.7%	3	2.2%	1	0.8%	0	0.0%
Mathematics	1	0.8%	2	1.4%	1	0.7%	0	0.0%	2	1.6%
Movement & Sports Science	3	2.3%	11	7.4%	1	0.7%	13	11.0%	12	9.8%
Music	0	0.0%	0	0.0%	7	5.1%	0	0.0%	0	0.0%
Philosophy	0	0.0%	1	0.7%	1	0.7%	1	0.8%	0	0.0%
Photography	0	0.0%	0	0.0%	0	0.0%	0	0.0%	1	0.8%
Physics	0	0.0%	1	0.7%	1	0.7%	0	0.0%	0	0.0%
Political Science	4	3.1%	10	6.8%	3	2.2%	1	0.8%	4	3.3%
Psychology	11	8.5%	6	4.1%	8	5.9%	13	11.0%	5	4.1%
Religion/Philosophy	1	0.8%	2	1.4%	2	1.5%	0	0.0%	0	0.0%
Social Science	1	0.8%	1	0.7%	1	0.7%	1	0.8%	0	0.0%
Sociology	3	2.3%	5	3.4%	5	3.7%	2	1.7%	1	0.8%
Spanish	2	1.5%	0	0.0%	1	0.7%	0	0.0%	0	0.0%
Speech Communication	0	0.0%	1	0.7%	1	0.0%	0	0.0%	1	0.0%
Theatre Arts	3	2.3%	3	2.0%	1	0.7%	1	0.8%	1	0.8%
	74	56.9%	91	61.5%	80	58.1%	64	54.2%	68	54.5%
Business & Public Management										
Accounting	0	0.0%	3	2.0%	4	2.9%	5	4.2%	1	0.8%
Business Admin./Mgmt.	14	10.8%	32	21.6%	32	23.5%	19	16.1%	22	17.9%
Economics	0	0.0%	0	0.0%	0	0.0%	1	0.8%	0	0.0%
E-Commerce	0	0.0%	1	0.7%	0	0.0%	1	0.8%	1	0.8%
Health Administration	0	0.0%	0	0.0%	0	0.0%	0	0.0%	0	0.0%
Marketing	5	3.8%	0	0.0%	0	0.0%	0	0.0%	0	0.0%
Organizational Management		0.0%	1	0.7%	0	0.0%	1	0.8%	2	1.6%
Public Administration	2	1.5%	0	0.0%	0	0.0%	0	0.0%	3	2.4%
	21	16.2%	37	25.0%	36	26.5%	27	22.9%	29	23.6%
Education & Organizational Leadership										
Child Development	4	3.1%	4	2.7%	4	2.9%	0	0.0%	1	0.8%
Liberal Studies	14	10.8%	10	6.8%	8	6.3%	16	13.6%	10	8.1%
Multiple Subject	0	0.0%	0	0.0%	2	1.5%	2	1.7%	5	4.1%
Single Subject	0	0.0%	0	0.0%	0	0.0%	0	0.0%	2	1.6%
	18	13.8%	14	9.5%	14	10.7%	18	15.3%	18	14.6%
College not Assigned										
Major not declared	17	13.1%	6	4.1%	6	4.4%	9	7.6%	8	6.5%
Grand Total All Students	130	100%	148	100%	136	100%	118	100%	123	99%

Source: Fall 2003-Fall 2005, Institutional Research Admission Census on October 15; Fall 2006 and after, Institutional Research Annual Census on November 15.

B-13: New RCA Undergraduate Enrollment by Gender and Ethnicity*
Fall 2005 - Fall 2009

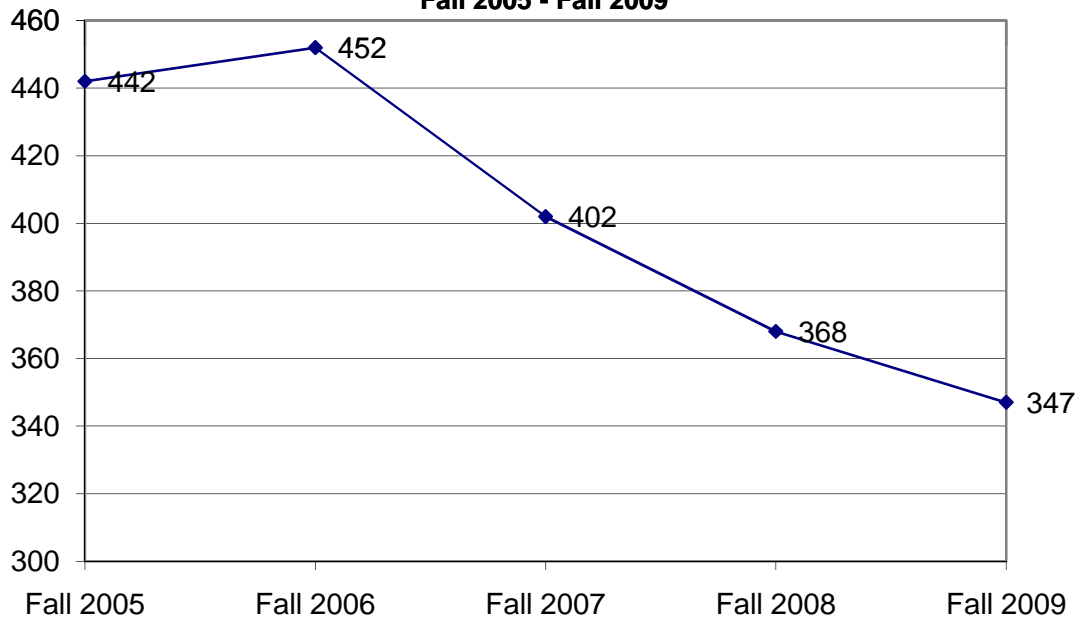
New RCA Undergraduates by Gender

Gender	Fall 2005		Fall 2006		Fall 2007		Fall 2008		Fall 2009	
	Count	%	Count	%	Count	%	Count	%	Count	%
Female	340	76.9%	340	75.2%	287	71.4%	257	69.8%	238	68.6%
Male	94	21.3%	112	24.8%	107	26.6%	111	30.2%	109	31.4%
Not Reported	8	1.8%	0	0.0%	8	2.0%	0	0.0%	0	0.0%
Total	442	100.0%	452	100.0%	402	100%	368	100%	347	100%

New RCA Undergraduates by Ethnicity

Ethnicity	Fall 2005		Fall 2006		Fall 2007		Fall 2008		Fall 2009	
	Count	%	Count	%	Count	%	Count	%	Count	%
American Indian/ Alaskan Native	6	1.4%	6	1.3%	3	0.7%	5	1.4%	1	0.3%
African American	48	10.9%	47	10.4%	37	9.2%	28	7.6%	29	8.4%
Caucasian	149	33.7%	130	28.8%	125	31.1%	119	32.3%	94	27.1%
Latino/Hispanic	152	34.4%	163	36.1%	144	35.8%	135	36.7%	135	38.9%
Asian American/ Pacific Islander	15	3.4%	18	4.0%	22	5.5%	11	3.0%	15	4.3%
Other	11	2.5%	19	4.2%	12	3.0%	17	4.6%	12	3.5%
International		0.0%		0.0%	0	0.0%	0	0.0%	0	0.0%
Unknown	61	13.8%	69	15.3%	59	14.7%	53	14.4%	61	17.6%
Total	442	100%	452	100%	402	100%	368	100%	347	100%

**New RCA Undergraduate Student Enrollment
 Fall 2005 - Fall 2009**



* RCA (Regional Campus Administration) includes Distance Learning, CAPA, Central Coast Campus, Inland Empire Campus, High Desert Victorville Campus, Kern County Campus, Orange County Campus, Pt. Mugu Campus, San Fernando Campus, RC Education, RC Teacher Education, Ventura Campus, Vandenberg Campus, and Bakersfield Campus.

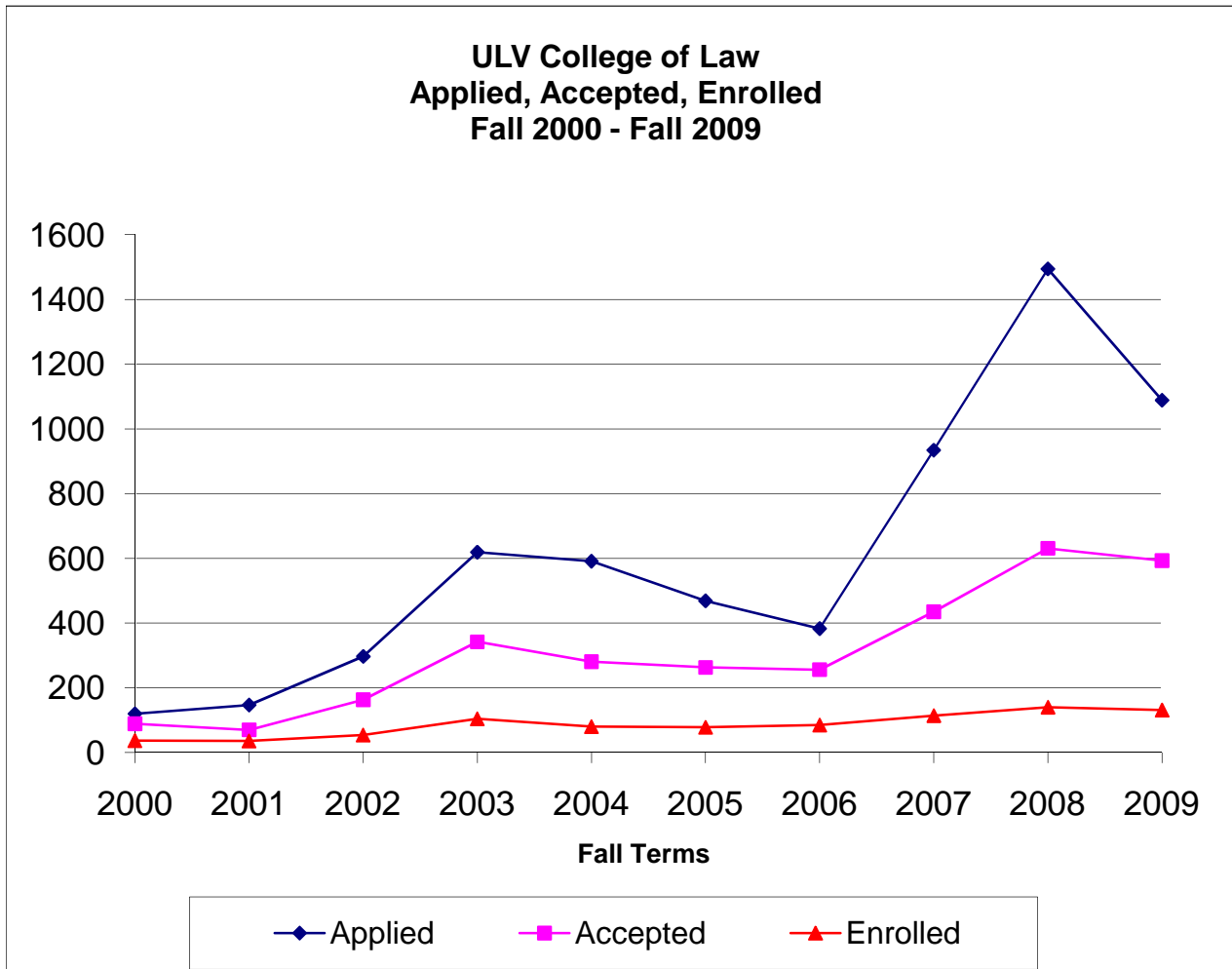
Source: Institutional Research Annual Census on November 15.

**B-14: New RCA Undergraduate Student Enrollment by Major
Fall 2005 - Fall 2009**

College Major	Fall 2005		Fall 2006		Fall 2007		Fall 2008		Fall 2009	
	Count	%	Count	%	Count	%	Count	%	Count	%
Arts & Sciences										
Athletic Training	0	0.0%	0	0.0%	0	0.0%	0	0.0%	1	0.0%
Anthropology	0	0.0%	0	0.0%	0	0.0%	0	0.0%	1	0.3%
Art	1	0.2%	1	0.2%	0	0.0%	0	0.0%	1	0.3%
Art History	1	0.2%	0	0.0%	1	0.2%	0	0.0%	1	0.3%
Behavioral Science	1	0.2%	3	0.7%	7	1.7%	4	1.1%	5	1.4%
Biology	3	0.7%	3	0.7%	0	0.0%	0	0.0%	1	0.3%
Broadcasting	1	0.2%	0	0.0%	0	0.0%	0	0.0%	0	0.0%
Chemistry	0	0.0%	1	0.2%	0	0.0%	0	0.0%	0	0.0%
Communications	1	0.2%	2	0.4%	0	0.0%	1	0.3%	1	0.3%
Comparative Literature	0	0.0%	1	0.2%	0	0.0%	0	0.0%	0	0.0%
Computer Science & Engineering	1	0.2%	2	0.4%	4	1.0%	2	0.5%	1	0.3%
Criminology	4	0.9%	14	3.1%	7	1.7%	7	1.9%	6	1.7%
English	4	0.9%	3	0.7%	2	0.5%	1	0.3%	3	0.9%
History	0	0.0%	0	0.0%	3	0.7%	1	0.3%	1	0.3%
Journalism	0	0.0%	0	0.0%	1	0.2%	0	0.0%	0	0.0%
Legal Studies	10	2.3%	17	3.8%	9	2.2%	13	3.5%	8	2.3%
Liberal Arts	0	0.0%	0	0.0%	1	0.2%	0	0.0%	1	0.3%
Mathematics	0	0.0%	1	0.2%	3	0.7%	0	0.0%	1	0.3%
Movement & Sports Science	2	0.5%	3	0.7%	2	0.5%	0	0.0%	2	0.6%
Music	1	0.2%	0	0.0%	0	0.0%	0	0.0%	0	0.0%
Political Science	0	0.0%	1	0.0%	1	0.0%	3	0.8%	1	0.3%
Psychology	13	2.9%	18	4.0%	12	3.0%	14	3.8%	13	3.7%
Religion	0	0.0%	0	0.0%	0	0.0%	0	0.0%	5	1.4%
Religion&Philosophy	0	0.0%	0	0.0%	0	0.0%	0	0.0%	1	0.3%
Social Science	3	0.7%	0	0.0%	2	0.5%	3	0.8%	2	0.6%
Sociology	7	1.6%	7	1.5%	8	2.0%	8	2.2%	7	2.0%
Spanish	2	0.5%	1	0.2%	0	0.0%	1	0.3%	0	0.0%
Speech Communication	0	0.0%	1	0.2%	0	0.0%	0	0.0%	0	0.0%
	55	12.4%	79	17.3%	63	15.4%	58	15.8%	63	18.2%
Business & Public Management										
Accounting	6	1.4%	5	1.1%	10	2.5%	6	1.6%	9	2.6%
Applied Management	0	0.0%	0	0.0%	0	0.0%	0	0.0%	0	0.0%
Business Admin./Mgmt.	85	19.2%	83	18.4%	119	29.6%	75	20.4%	83	23.9%
Economics	0	0.0%	1	0.0%	0	0.0%	0	0.0%	1	0.3%
E-Commerce	1	0.2%	0	0.0%	0	0.0%	0	0.0%	2	0.6%
Health Administration	6	1.4%	5	1.1%	2	0.5%	7	1.9%	1	0.3%
Organizational Management	72	16.3%	63	13.9%	79	19.7%	84	22.8%	72	20.7%
Public Administration	15	3.4%	16	3.5%	10	2.5%	30	8.2%	17	4.9%
	185	41.9%	173	38.1%	220	54.7%	202	54.9%	185	53.3%
Education & Organizational Leadership										
Child Development	96	21.7%	105	23.2%	41	10.2%	47	12.8%	51	14.7%
Liberal Studies	100	22.6%	92	20.4%	76	18.9%	59	16.0%	44	12.7%
Multiple Subject	4	0.9%	1	0.2%	0	0.0%	0	0.0%	1	0.3%
Single Subject	2	0.5%	1	0.2%	0	0.0%	1	0.3%	0	0.0%
	202	45.7%	199	44.0%	117	29.1%	107	29.1%	96	27.7%
College not Assigned										
Major not declared	0	0.0%	1	0.2%	2	0.5%	1	0.3%	3	0.9%
Grand Total All Students	442	100%	452	100%	402	100%	368	100%	347	100%

Source: Institutional Research Annual Census on November 15.

B-15: Application, Acceptance, and Enrollment Statistics for the College of Law*



Fall	Acceptance			Enrolled	Yield Rate
	Applied	Accepted	Rate		
2000	120	89	74%	37	42%
2001	147	70	48%	36	51%
2002	297	163	55%	54	33%
2003	619	342	55%	104	30%
2004	591	281	48%	80	28%
2005	469	263	56%	78	30%
2006	383	256	67%	85	33%
2007	934	435	47%	114	26%
2008	1494	631	42%	140	22%
2009	1088	593	55%	131	22%

* Does not include students at the former San Fernando Valley Campus.

Source: Admissions Office, ULV College of Law; Institutional Research Annual Census on November 15; Institutional Research Admission Census on October 15..

**B-16: New Main Campus Masters Students by Major/Credential
Fall 2005 - Fall 2009**

Major	Fall 2005	Fall 2006	Fall 2007	Fall 2008	Fall 2009					
College of Arts & Sciences										
Counseling (Concentration/Special Emphasis)	4	1.1%	9	2.8%	10	2.6%	2	0.5%	5	1.1%
Marriage & Family Therapy (MFT)	25	6.6%	15	4.7%	21	5.6%	21	5.6%	17	3.7%
Student Self-Designed Major	0	0.0%	0	0.0%	0	0.0%	1	0.3%	0	0.0%
	29	7.7%	24	7.5%	31	8.2%	24	6.4%	22	4.8%
College of Business & Public Management										
Business Administration	86	22.7%	95	29.5%	92	24.3%	121	32.3%	151	32.8%
Business Information Technology	0	0.0%	0	0.0%	2	0.5%	0	0.0%	0	0.0%
Business Organizational Management	0	0.0%	1	0.3%	0	0.0%	0	0.0%	0	0.0%
Gerontology	5	1.3%	5	1.6%	7	1.9%	4	1.1%	7	1.5%
Health Services Administration	5	1.3%	8	2.5%	11	2.9%	14	3.7%	12	2.6%
Leadership & Management	16	4.2%	11	3.4%	16	4.2%	28	7.5%	51	11.1%
Public Administration	14	3.7%	15	4.7%	21	5.6%	19	5.1%	18	3.9%
	126	33.2%	135	41.9%	149	39.4%	186	49.6%	239	52.0%
College of Education & Organizational Leadership										
Child Development	12	3.2%	8	2.5%	4	1.1%	8	2.1%	8	1.7%
Child Life	12	3.2%	10	3.1%	19	5.0%	11	2.9%	13	2.8%
Educational Management	5	1.3%	4	1.2%	4	1.1%	4	1.1%	9	2.0%
Multiple Subject (Credential)	61	16.1%	32	9.9%	44	11.6%	34	9.1%	33	7.2%
Preliminary Administrative Services (Credential)	1	0.3%	2	0.6%	0	0.0%	2	0.5%	3	0.7%
Pupil Personnel Services (Credential)	1	0.3%	0	0.0%	0	0.0%	4	1.1%	0	0.0%
Reading	8	2.1%	6	1.9%	6	1.6%	13	3.5%	16	3.5%
School/Educational Counseling	18	4.7%	26	8.1%	40	10.6%	32	8.5%	34	7.4%
Single Subject (Credential)	36	9.5%	31	9.6%	26	6.9%	22	5.9%	31	6.7%
Special Education	2	0.5%	3	0.9%	11	2.9%	6	1.6%	17	3.7%
Special Emphasis	68	17.9%	41	12.7%	42	11.1%	28	7.5%	34	7.4%
Special Emphasis	0	0.0%	0	0.0%	0	0.0%	0	0.0%	1	0.2%
	224	59.1%	163	50.6%	196	51.9%	164	43.7%	199	43.3%
Major not Declared	0	0.0%	0	0.0%	2	0.5%	1	0.0%	0	0.0%
Total Masters Majors	379	100%	322	100%	378	100%	375	100%	460	100%

**B- 17: New Doctoral Students by Major/Credential at All Campuses
Fall 2005 - Fall 2009**

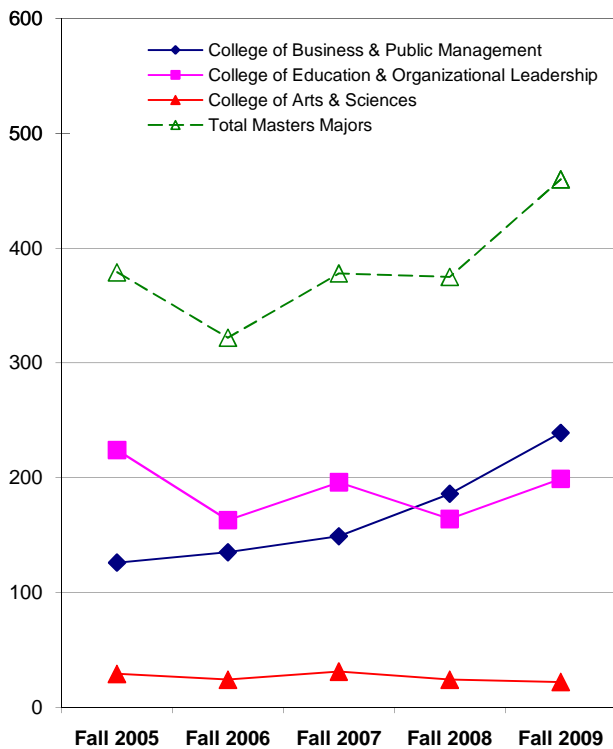
Major	Fall 2005	Fall 2006	Fall 2007	Fall 2008	Fall 2009					
Clinical-Community Psychology (PsyD)	18	25.7%	13	22.0%	21	23.6%	21	27.3%	21	24.7%
Educational/Organizational Leadership/Management (EdD)	32	45.7%	23	39.0%	50	56.2%	30	39.0%	42	49.4%
Professional Administrative Services (Credential)	0	0.0%	2	3.4%	0	0.0%	1	1.3%	0	0.0%
Public Administration (DPA)	20	28.6%	21	35.6%	18	20.2%	25	32.5%	22	25.9%
	70	100.0%	59	100.0%	89	100.0%	77	100.0%	85	100.0%
Major not Declared	0	0.0%	0	0.0%	0	0.0%	0	0.0%	0	0.0%
Total Doctoral Majors	70	100%	59	100%	89	100%	77	100%	85	100%

Source: Institutional Research Annual Census on November 15.

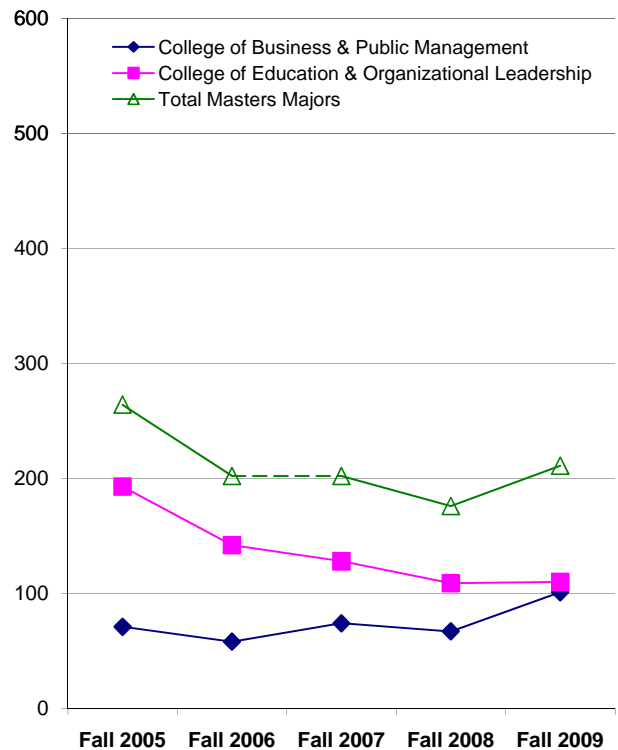
**B-18: New RCA Masters Students by Major/Credential
Fall 2005 - Fall 2009**

Major	Fall 2005	Fall 2006	Fall 2007	Fall 2008	Fall 2009					
College of Business & Public Management										
Business Administration	63	23.9%	49	24.3%	55	27.2%	50	28.4%	70	33.2%
Business Organizational Management	5	1.9%	6	3.0%	5	2.5%	1	0.6%	0	0.0%
Health Services Administration	0	0.0%	0	0.0%	0	0.0%	3	1.7%	0	0.0%
Leadership & Management	1	0.4%	0	0.0%	12	5.9%	13	7.4%	31	14.7%
Public Administration	2	0.8%	3	1.5%	2	1.0%	0	0.0%	0	0.0%
	71	26.9%	58	28.7%	74	36.6%	67	38.1%	101	47.9%
College of Education & Organizational Leadership										
Child Development	22	8.3%	0	0.0%	0	0.0%	0	0.0%	0	0.0%
Educational Management	29	11.0%	20	9.9%	7	3.5%	6	3.4%	0	0.0%
Multiple Subject (Credential)	24	9.1%	27	13.4%	24	11.9%	20	11.4%	18	8.5%
Preliminary Administrative Services (Credential)	2	0.8%	2	1.0%	0	0.0%	1	0.6%	0	0.0%
Reading	2	0.8%	0	0.0%	0	0.0%	0	0.0%	0	0.0%
School/Educational Counseling	54	20.5%	53	26.2%	68	33.7%	42	23.9%	51	24.2%
Single Subject (Credential)	16	6.1%	8	4.0%	11	5.4%	8	4.5%	13	6.2%
Special Education	4	1.5%	3	1.5%	1	0.5%	5	2.8%	5	2.4%
Special Emphasis	39	14.8%	29	14.4%	17	8.4%	27	15.3%	22	10.4%
Student Self-Designed Major	1	0.4%	0	0.0%	0	0.0%	0	0.0%	1	0.5%
	193	73.1%	142	70.3%	128	63.4%	109	61.9%	110	52.1%
Major not Declared	0	0.0%	2	1.0%	0	0.0%	0	0.0%	0	0.0%
Total Masters Majors	264	100%	202	100%	202	100%	176	100%	211	100%

**New Main Campus Master Level Students
Fall 2005 - Fall 2009**



**New RCA Master Level Students
Fall 2005 - Fall 2009**



Source: Institutional Research Annual Census on November 15.

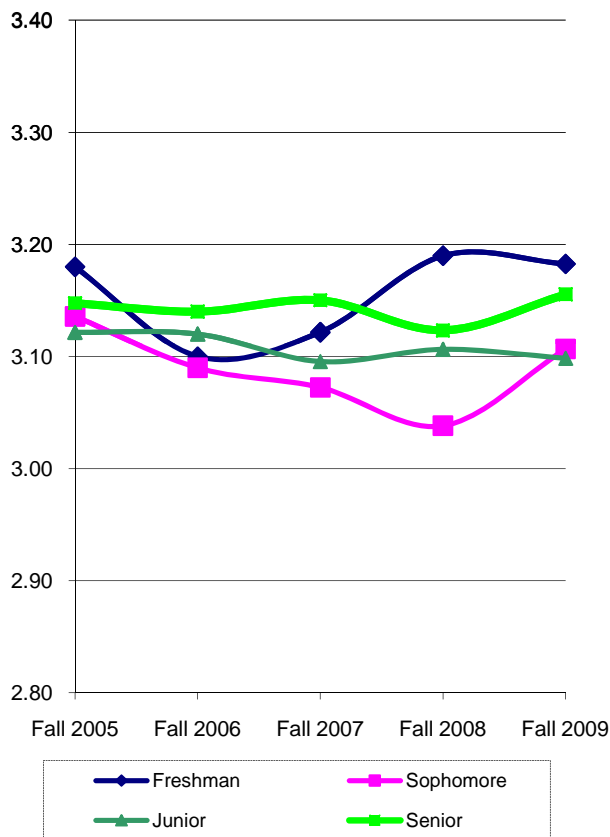
C.
PERFORMANCE
INDICATORS

All statistics are based on data from La Verne's census on November 15 for each year specified, unless otherwise noted.

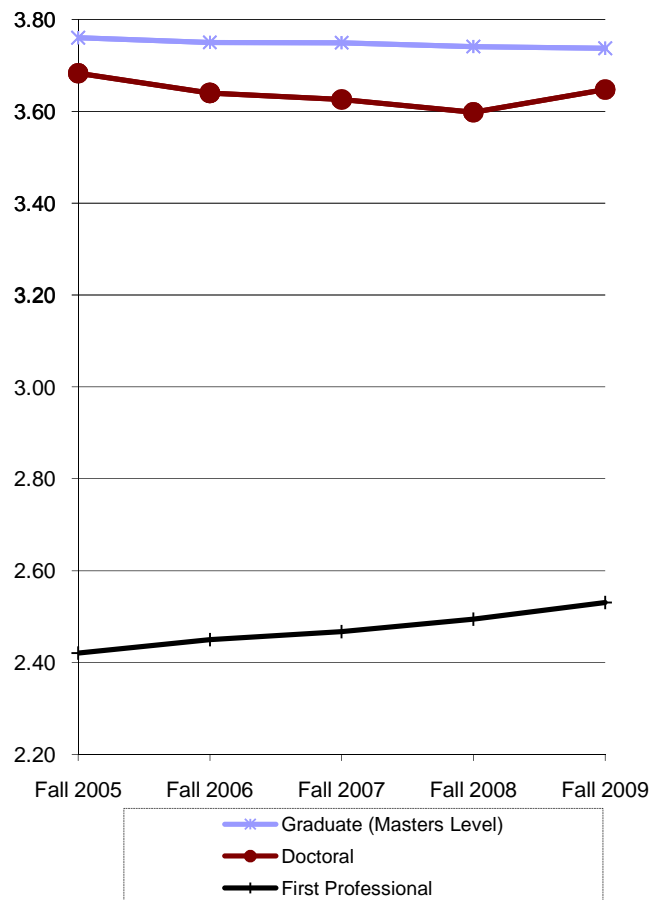
**C-1: Student Cumulative GPA by Level
Fall 2005 - Fall 2009**

Student Level	Fall 2005		Fall 2006		Fall 2007		Fall 2008		Fall 2009	
	Median	Mean	Median	Mean	Median	Mean	Median	Mean	Median	Mean
Freshman	3.30	3.18	3.22	3.10	3.30	3.12	3.36	3.19	3.30	3.18
Sophomore	3.20	3.14	3.09	3.09	3.11	3.07	3.08	3.04	3.12	3.11
Junior	3.14	3.12	3.14	3.12	3.10	3.10	3.12	3.11	3.10	3.10
Senior	3.15	3.15	3.14	3.14	3.16	3.15	3.12	3.12	3.16	3.16
Graduate (Masters Level)	3.86	3.76	3.85	3.75	3.85	3.75	3.85	3.74	3.84	3.74
Doctoral	3.74	3.68	3.71	3.64	3.71	3.63	3.71	3.60	3.71	3.65
First Professional	2.35	2.42	2.41	2.45	2.45	2.47	2.45	2.49	2.51	2.53
ULV Overall	3.43	3.36	3.42	3.35	3.41	3.34	3.41	3.34	3.41	3.35

**Means of Undergraduate Student GPA
Fall 2005 - Fall 2009**



**Means of Graduate Student GPA
Fall 2005 - Fall 2009**



Source: Institutional Research Annual Census on November 15.

C-2: Retention Rates* for Main Campus First-Time Full-Time Traditional-Age Entering Freshmen
Fall 1995 - Fall 2008**

Entering		Students Continuing at ULV											
Fall Term	FT Count	After 1 Year	After 2 Years	After 3 Years	After 4 Years	After 5 Years	After 6 Years						
1995	184	139 76%	113 61%	100 54%	28 15%	10 5%	4 2%						
1996	196	153 78%	126 64%	122 62%	35 18%	10 5%	5 3%						
1997	202	167 83%	149 74%	135 67%	44 22%	9 4%	7 3%						
1998	321	267 83%	217 68%	195 61%	59 18%	12 4%	12 4%						
1999	320	255 80%	228 71%	215 67%	50 16%	10 3%	3 1%						
2000	285	236 83%	211 74%	202 71%	71 25%	14 5%	4 1%						
2001	305	257 84%	234 77%	223 73%	63 21%	16 5%	8 3%						
2002	294	258 88%	227 77%	227 77%	60 20%	19 6%	8 3%						
2003	289	253 88%	228 79%	219 76%	70 24%	19 7%	4 1%						
2004	375	333 89%	300 80%	281 75%	82 22%	15 4%							
2005	332	267 80%	234 70%	219 66%	50 15%								
2006	314	266 85%	227 72%	214 68%									
2007	334	263 79%	231 69%										
2008	299	234 78%											
2009	329												

C-3: Graduation Rates* for Main Campus First-Time Full-Time Traditional-Age Entering Freshmen
Fall 1995 - Fall 2005**

Entering		Students Graduating from ULV							
Fall Term	Head Count	Within 4 Years	Within 5 Years	Within 6 Years	Within 6 or More Years****				
1995	184	76 41%	78 42%	85 46%	91 49%				
1996	196	60 31%	87 44%	92 47%	106 54%				
1997	202	62 31%	97 48%	102 50%	114 56%				
1998	321	106 33%	147 46%	157 49%	170 53%				
1999	320	123 38%	159 50%	168 53%	179 56%				
2000	285	93 33%	134 47%	145 51%	159 56%				
2001	305	126 41%	167 55%	177 58%	185 61%				
2002	294	124 42%	166 56%	180 61%	189 64%				
2003	289	125 43%	173 60%	193 67%					
2004	375	184 49%	247 66%						
2005	332	144 43%							
2006	313								

* It is referred to the number and percent of students in a cohort who stayed. The first fall-to-fall (first-year) retention rates are often used in speeches and publications regarding retention.

** This first-time, full-time, degree-seeking first-year students (freshmen) cohort is often referred as GRS (Graduation Rates) Cohort in research on retention rates and graduation rates.

*** It is referred to the number and percent of students in a cohort who graduated. The graduation dates for an specific year are between September 1 and August 31, as defined by IPEDS.

**** The numbers and percentages in this column are cumulative, which include everyone of that cohort who has ever graduated.

Source: Institutional Research Annual Census on November 15.

**C-4: The First Fall-to-Fall (First-Year) Retention Rates for Main Campus First-Time Full-Time Traditional-Age Freshmen by Ethnicity*
Fall 1995 - Fall 2008**

Cohort	Caucasian			African-American			Hispanic/ Latino			Asian/Pacific Islander			Other			Ethnicity Unknown		
	1st Fall	2nd Fall	Rate	1st Fall	2nd Fall	Rate	1st Fall	2nd Fall	Rate	1st Fall	2nd Fall	Rate	1st Fall	2nd Fall	Rate	1st Fall	2nd Fall	Rate
1995	77	54	70%	20	16	80%	61	50	82%	23	17	74%	3	2	67%	0	0	-
1996	75	62	83%	19	15	79%	81	63	78%	15	8	53%	5	4	80%	1	1	100%
1997	86	72	84%	20	15	75%	62	52	84%	12	10	83%	17	16	94%	5	2	40%
1998	125	98	78%	26	23	88%	118	106	90%	22	16	73%	26	21	81%	4	3	75%
1999	114	86	75%	31	28	90%	112	96	86%	28	20	71%	20	12	60%	15	13	87%
2000	117	90	77%	32	29	91%	88	78	89%	22	16	73%	6	4	67%	20	19	95%
2001	105	83	79%	19	17	89%	125	108	86%	20	19	95%	8	4	50%	28	26	93%
2002	92	81	88%	24	22	92%	117	106	91%	14	12	86%	9	7	40%	37	31	84%
2003	106	91	86%	23	21	91%	119	104	87%	15	15	100%	14	13	93%	11	8	73%
2004	129	118	91%	31	25	81%	152	133	88%	12	11	92%	26	23	88%	25	23	92%
2005	98	79	81%	31	21	68%	130	108	83%	15	12	80%	25	19	76%	33	28	85%
2006	95	81	85%	22	17	77%	138	116	84%	16	14	88%	19	15	79%	24	23	96%
2007	97	76	78%	18	14	78%	151	121	80%	11	9	82%	5	2	76%	52	41	79%
2008	58	47	81%	25	18	72%	121	99	82%	14	10	71%	23	19	83%	52	37	71%

* The first fall-to-fall (first-year) retention rate calculates the percentage of students who stay in the second Fall after they entered ULV in a given Fall term.
Source: Institutional Research Annual Census on November 15.

**C-5: Graduation Rates (Within 6 Years) for Main Campus First-Time Full-Time Traditional-Age Freshmen by Ethnicity
Fall 1995 - Fall 2005**

Cohort	Caucasian			African-American			Hispanic/ Latino			Asian/Pacific Islander			Other			Ethnicity Unknown		
	Total	ated	Rate	Total	ated	Rate	Total	ated	Rate	Total	ated	Rate	Total	ated	Rate	Total	ated	Rate
1995	77	30	39%	20	7	35%	61	34	56%	23	12	52%	3	2	67%	0	0	-
1996	75	39	52%	19	5	26%	81	40	49%	15	4	27%	5	2	40%	1	1	100%
1997	86	49	57%	20	9	45%	62	29	47%	12	4	33%	17	9	53%	5	2	40%
1998	125	56	45%	26	15	58%	118	65	55%	22	6	27%	26	13	50%	4	2	50%
1999	114	62	54%	31	16	52%	112	65	58%	28	10	36%	20	6	30%	15	9	60%
2000	117	59	50%	32	18	56%	88	46	52%	22	9	41%	6	1	17%	20	11	55%
2001	105	60	57%	19	12	63%	125	71	57%	20	12	60%	8	3	38%	28	19	68%
2002	92	56	61%	24	14	58%	117	74	63%	14	9	64%	9	6	67%	37	34	92%
2003	106	72	68%	23	15	65%	119	80	67%	15	11	73%	14	6	43%	10	8	80%
2004*	129	95	74%	31	16	52%	152	95	63%	12	9	75%	26	15	58%	25	16	64%
2005**	98	43	44%	31	12	39%	130	59	45%	16	7	44%	23	9	39%	33	14	42%

* Graduation Rates are within 5 years for the cohort.

** Graduation Rates are within 4 years for the cohort.

Source: Institutional Research Annual Census on November 15.

**C-6: Retention Rates for Main Campus Full-Time Undergraduate Transfer Students*
Fall 1995 - Fall 2007**

Fall Term	FT Count	Students Continuing at ULV											
		After 1 Year	After 2 Years	After 3 Years	After 4 Years	After 5 Years	After 6 Years	After 1 Year	After 2 Years	After 3 Years	After 4 Years	After 5 Years	After 6 Years
1995	124	89	72%	46	37%	19	15%	5	4%	1	1%	1	1%
1996	136	90	66%	43	32%	21	15%	7	5%	0	0%	2	1%
1997	114	78	68%	41	36%	12	11%	5	4%	0	0%	0	0%
1998	136	103	76%	56	41%	15	11%	3	2%	1	1%	0	0%
1999	117	96	82%	48	41%	25	21%	7	6%	1	1%	1	1%
2000	129	95	74%	42	33%	12	9%	5	4%	3	2%	1	1%
2001	108	88	81%	39	36%	9	8%	2	2%	1	1%	0	0%
2002	110	83	75%	48	44%	13	12%	2	2%	2	2%	0	0%
2003	105	89	85%	43	41%	10	10%	1	1%	3	3%	0	0%
2004	160	130	81%	65	41%	19	12%	3	2%	0	0%		
2005	127	110	87%	54	43%	10	8%	3	2%				
2006	136	104	76%	51	38%	19	14%						
2007	126	97	77%	52	41%								
2008	110	91	83%										
2009	111												

Source: Institutional Research Annual Census on November 15.

**C-7: Graduation Rates for Main Campus Full-Time Undergraduate Transfer Students*
Fall 1995 - Fall 2006**

Fall Term	Head Count	Students Graduating from ULV										Within 6 or More Years**	
		Within 2 Years	Within 3 Years	Within 4 Years	Within 5 Years	Within 6 Years	Within 2 Years	Within 3 Years	Within 4 Years	Within 5 Years	Within 6 Years	Within 6 or More Years**	
1995	124	24	19%	43	35%	60	48%	60	48%	61	49%	65	52%
1996	136	23	17%	42	31%	52	38%	59	43%	61	45%	65	48%
1997	114	23	20%	47	41%	57	50%	63	55%	63	55%	65	57%
1998	136	31	23%	59	43%	71	52%	75	55%	75	55%	77	57%
1999	117	26	22%	49	42%	59	50%	66	56%	66	56%	70	60%
2000	129	33	26%	57	44%	66	51%	74	57%	77	60%	80	62%
2001	108	29	27%	57	53%	63	58%	67	62%	68	63%	69	64%
2002	110	22	20%	52	47%	59	54%	61	55%	74	67%	66	60%
2003	105	31	30%	59	56%	63	60%	72	69%	67	64%		
2004	160	54	34%	90	56%	103	64%	109	68%				
2005	127	47	37%	80	63%	88	69%						
2006	136	31	23%	65	48%								
2007	126	29	23%										
2008	109												

* Does not include CAPA.

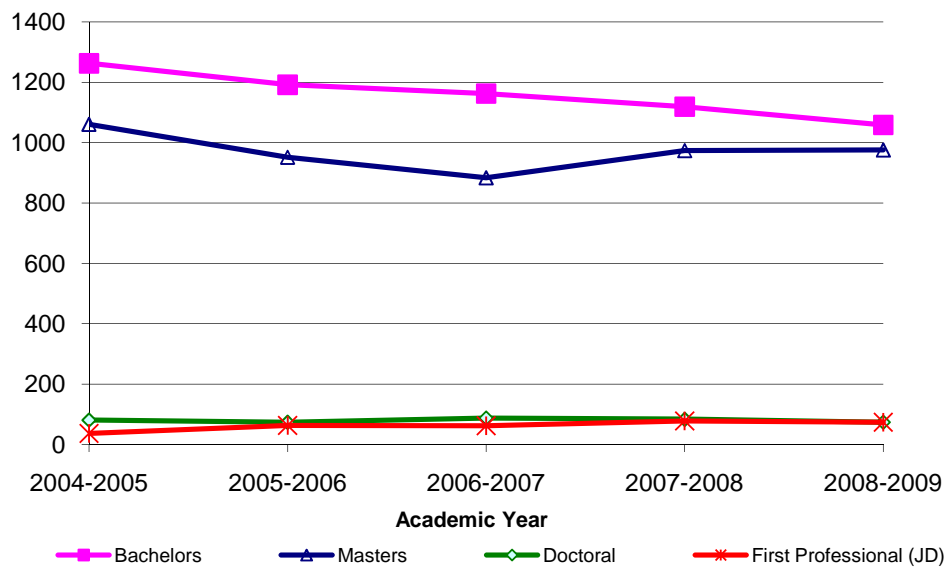
** The numbers and percentages in this column are cumulative, which include everyone of that cohort who has ever graduated.

Source: Institutional Research Annual Census on November 15.

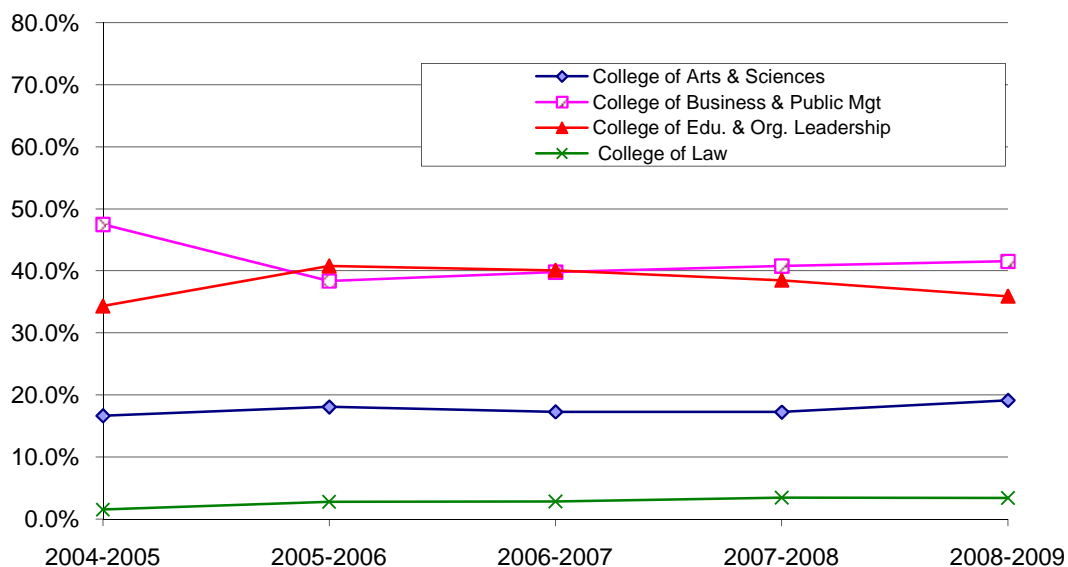
**C-8: Degrees Awarded by La Verne between July 1 and June 30
2005 - 2009**

Degree Awarded	2004-2005		2005-2006		2006-2007		2007-2008		2008-2009	
Associate	2	0.1%	1	0.0%	1	0.0%	0	0.0%	0	0.0%
Bachelors	1263	51.7%	1192	52.2%	1163	52.9%	1119	49.6%	1059	48.5%
Masters	1061	43.4%	952	41.7%	884	40.2%	974	43.2%	976	44.7%
Doctoral	81	3.3%	74	3.2%	88	4.0%	84	3.7%	74	3.4%
First Professional (JD)	37	1.5%	63	2.8%	62	2.8%	78	3.5%	74	3.4%
Total	2444	100%	2282	100%	2198	100%	2255	100%	2183	100%

**Degrees Awarded by La Verne
2005-2009**



**Percentage of Total Degrees Awarded by Colleges
2005-2009**



Source: Institutional Research Annual Census on November 15.

**C-9: Bachelors Degrees Conferred to La Verne Students
2005 - 2009**

Major	2004-2005		2005-2006		2006-2007		2007-2008		2008-2009	
College of Arts & Sciences										
Athletic Training	3	0.2%	7	0.6%	9	0.8%	4	0.4%	8	0.8%
Anthropology	2	0.2%	3	0.3%	0	0.0%	2	0.2%	3	0.3%
Art	8	0.6%	6	0.5%	8	0.7%	9	0.8%	11	1.0%
Art History	0	0.0%	1	0.1%	2	0.2%	4	0.4%	3	0.3%
Behavioral Science	20	1.6%	19	1.6%	9	0.8%	8	0.7%	15	1.4%
Biology	5	0.4%	8	0.7%	7	0.6%	16	1.4%	17	1.6%
Broadcasting	16	1.3%	9	0.8%	12	1.0%	12	1.1%	11	1.0%
Chemistry	2	0.2%	3	0.3%	3	0.3%	4	0.4%	5	0.5%
Communications	13	1.0%	16	1.3%	16	1.4%	16	1.4%	23	2.2%
Computer Science & Engineering	23	1.8%	14	1.2%	9	0.8%	6	0.5%	10	0.9%
Criminology	41	3.2%	38	3.2%	34	2.9%	37	3.3%	39	3.7%
English	19	1.5%	18	1.5%	19	1.6%	14	1.3%	11	1.0%
Environmental Biology	0	0.0%	0	0.0%	1	0.1%	1	0.1%	1	0.1%
Environmental Management	1	0.1%	0	0.0%	0	0.0%	0	0.0%	0	0.0%
French	0	0.0%	0	0.0%	2	0.2%	0	0.0%	0	0.0%
History	7	0.6%	6	0.5%	13	1.1%	7	0.6%	5	0.5%
International Business & Language	4	0.3%	3	0.3%	6	0.5%	5	0.4%	7	0.7%
International Studies	0	0.0%	2	0.2%	1	0.1%	1	0.1%	1	0.1%
Journalism	6	0.5%	14	1.2%	13	1.1%	8	0.7%	6	0.6%
Legal/Paralegal Studies	12	1.0%	19	1.6%	20	1.7%	24	2.1%	19	1.8%
Liberal Arts	1	0.1%	6	0.5%	4	0.3%	3	0.3%	2	0.2%
Mathematics	4	0.3%	1	0.1%	3	0.3%	2	0.2%	3	0.3%
Movement & Sports Science/Phys Ed	24	1.9%	20	1.7%	17	1.5%	20	1.8%	25	2.4%
Music	4	0.3%	7	0.6%	3	0.3%	1	0.1%	3	0.3%
Natural Science	1	0.1%	0	0.0%	0	0.0%	1	0.1%	0	0.0%
Philosophy	2	0.2%	2	0.2%	1	0.1%	1	0.1%	4	0.4%
Physics	0	0.0%	0	0.0%	2	0.2%	2	0.2%	0	0.0%
Political Science	27	2.1%	16	1.3%	10	0.9%	12	1.1%	18	1.7%
Psychology	77	6.1%	77	6.5%	71	6.1%	57	5.1%	69	6.5%
Religion	2	0.2%	3	0.3%	0	0.0%	0	0.0%	1	0.1%
Religion & Philosophy	3	0.2%	1	0.1%	1	0.1%	3	0.3%	3	0.3%
Social Science	7	0.6%	3	0.3%	6	0.5%	3	0.3%	8	0.8%
Sociology	9	0.7%	30	2.5%	20	1.7%	19	1.7%	20	1.9%
Spanish	2	0.2%	2	0.2%	0	0.0%	1	0.1%	5	0.5%
Speech Communication	5	0.4%	5	0.4%	9	0.8%	17	1.5%	7	0.7%
Theatre Arts	1	0.1%	2	0.2%	3	0.3%	4	0.4%	7	0.7%
Student Designed Majors	0	0.0%	2	0.2%	0	0.0%	5	0.4%	0	0.0%
	351	27.8%	363	30.5%	334	28.7%	329	29.4%	370	34.9%
College of Business & Public Management										
Accounting	18	1.4%	22	1.8%	21	1.8%	14	1.3%	12	1.1%
Business Administration	337	26.7%	251	21.1%	228	19.6%	238	21.3%	194	18.3%
Business Management	1	0.1%	0	0.0%	0	0.0%	4	0.4%	5	0.5%
E-Commerce	0	0.0%	2	0.2%	2	0.2%	2	0.2%	2	0.2%
Economics	11	0.9%	6	0.5%	7	0.6%	3	0.3%	3	0.3%
Health Administration	32	2.5%	33	2.8%	17	1.5%	12	1.1%	9	0.8%
Marketing	17	1.3%	4	0.3%	2	0.2%	2	0.2%	0	0.0%
Organizational Management	210	16.6%	163	13.7%	182	15.6%	171	15.3%	160	15.1%
Public Administration	25	2.0%	31	2.6%	24	2.1%	33	2.9%	29	2.7%
Student Designed Majors	0	0.0%	1	0.1%	0	0.0%	0	0.0%	0	0.0%
	651	51.5%	513	43.0%	483	41.5%	479	42.8%	414	39.1%
College of Education & Organizational Leadership										
Child Development	101	8.0%	105	8.8%	146	12.6%	121	10.8%	124	11.7%
Child Development/Life	0	0.0%	0	0.0%	0	0.0%	0	0.0%	0	0.0%
Liberal Studies	160	12.7%	211	17.7%	200	17.2%	190	17.0%	151	14.3%
	261	20.7%	316	26.5%	346	29.8%	311	27.8%	275	26.0%
Total Bachelors Degrees Conferred	1263	100%	1192	100%	1163	100%	1119	100%	1059	100%

Source: Institutional Research Annual Census on November 15.

**C-10: Masters Degrees Awarded by La Verne
Fall 2005 - Fall 2009**

Major	2004-2005		2005-2006		2006-2007		2007-2008		2008-2009	
College of Arts & Sciences										
Counseling	18	1.7%	16	1.7%	6	0.7%	5	0.5%	11	1.1%
Counseling/Marriage & Family Therapy (MFT)	17	1.6%	14	1.5%	18	2.0%	28	2.9%	22	2.3%
Counseling (Special Emphasis)	3	0.3%	4	0.4%	1	0.1%	0	0.0%	0	0.0%
Psychology	9	0.8%	1	0.1%	0	0.0%	16	1.6%	11	1.1%
	47	4.4%	35	3.7%	25	2.8%	49	5.0%	44	4.5%
College of Business & Public Management										
Business Administration	367	34.6%	266	27.8%	263	29.8%	325	33.4%	356	36.5%
Business Information Technology	11	1.0%	3	0.3%	4	0.5%	2	0.2%	5	0.5%
Business Organizational Management	41	3.9%	9	0.9%	18	2.0%	18	1.8%	10	1.0%
Gerontology	8	0.8%	12	1.3%	14	1.6%	11	1.1%	11	1.1%
Health Administration	1	0.1%	0	0.0%	7	0.8%	19	2.0%	19	1.9%
Health Services Administration	24	2.3%	18	1.9%	7	0.8%	0	0.0%	1	0.1%
International Administration	0	0.0%	0	0.0%	0	0.0%	0	0.0%	0	0.0%
Leadership & Management	25	2.4%	28	2.9%	38	4.3%	39	4.0%	58	5.9%
Public Administration	19	1.8%	15	1.6%	31	3.5%	16	1.6%	21	2.2%
	496	46.7%	351	36.7%	382	43.2%	430	44.1%	481	49.3%
College of Education & Organizational Leadership										
Child Development	3	0.3%	22	2.3%	32	3.6%	16	1.6%	9	0.9%
Child Development/Life	0	0.0%	0	0.0%	0	0.0%	0	0.0%	0	0.0%
Child Life	6	0.6%	11	1.2%	13	1.5%	8	0.8%	19	1.9%
Educational Management	93	8.8%	98	10.3%	78	8.8%	74	7.6%	49	5.0%
Reading	25	2.4%	21	2.2%	23	2.6%	33	3.4%	10	1.0%
School/Educational Counseling	144	13.6%	153	16.0%	115	13.0%	177	18.2%	197	20.2%
School Psychology	0	0.0%	0	0.0%	0	0.0%	0	0.0%	8	0.8%
Special Education	0	0.0%	0	0.0%	4	0.5%	2	0.2%	2	0.2%
Special Emphasis	240	22.6%	210	22.0%	206	23.3%	185	19.0%	157	16.1%
Special Emphasis: Adv. Teaching Methods	7	0.7%	55	5.8%	5	0.6%	0	0.0%	0	0.0%
Student Designed Majors	0	0.0%	0	0.0%	1	0.1%	0	0.0%	0	0.0%
	518	48.8%	570	59.6%	477	54.0%	495	50.8%	451	46.2%
Total Masters Degrees Conferred	1061	100%	956	100%	884	100%	974	100%	976	100%

**C-11: Doctoral Degrees Conferred by La Verne
2005 - 2009**

Major	2004-2005		2005-2006		2006-2007		2007-2008		2008-2009	
Clinical-Community Psychology (PsyD)	7	8.6%	15	20.3%	20	22.7%	11	13.1%	4	5.4%
Educational/Organizational Leadership/Management (EdD)	60	74.1%	46	62.2%	58	65.9%	62	73.8%	58	78.4%
Public Administration (DPA)	14	17.3%	13	17.6%	10	11.4%	11	13.1%	12	16.2%
Total Doctoral Degrees Conferred	81	100%	74	100%	88	100%	84	100%	74	100%

**C-12: First Professional Degrees Conferred by La Verne
2005 - 2009**

Major	2004-2005		2005-2006		2006-2007		2007-2008		2008-2009	
Juris Doctor (JD)	37	100%	63	100%	62	100%	78	100%	74	100%
Total Professional Degrees Conferred	37	100%	63	100%	62	100%	78	100%	74	100%

Source: Institutional Research Annual Census on November 15.

D. FACULTY AND STAFF

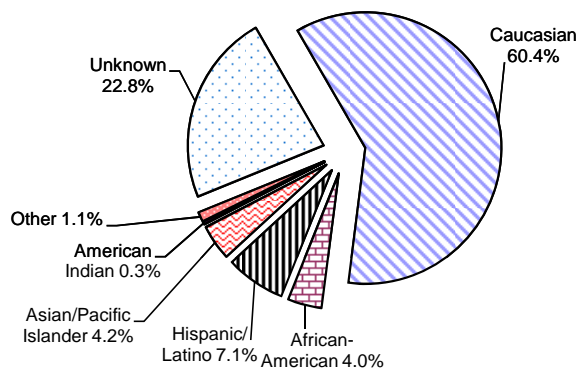
All statistics are based on data from La Verne's census on November 15 for each year specified, unless otherwise noted.

D-1: Gender and Ethnicity of La Verne Faculty by Full-Time and Part-Time Status Fall 2009

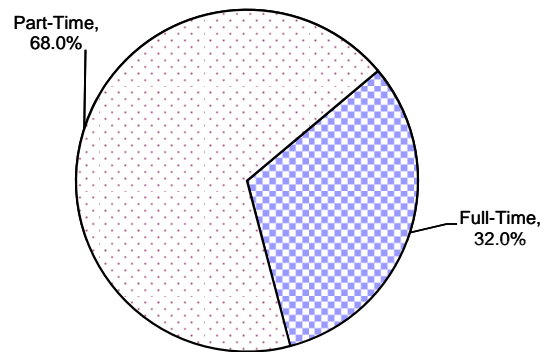
Ethnicity

Faculty	Caucasian		African-American		Hispanic/Latino		Asian/Pacific Islander		American Indian		Other		Ethnicity Unknown		Total	
Full-Time																
Male	85	53.1%	4	44.4%	7	46.7%	7	53.8%	0	0.0%	0	0.0%	0	0.0%	103	52.0%
Female	75	46.9%	5	55.6%	8	53.3%	6	46.2%	1	0.0%	0	0.0%	0	0.0%	95	48.0%
Total	160	100.0%	9	100.0%	15	100.0%	13	100.0%	1	0.0%	0	0.0%	0	0.0%	198	100.0%
Part-Time																
Male	114	53.5%	11	68.8%	14	48.3%	8	61.5%	0	0.0%	2	28.6%	70	49.6%	219	52.1%
Female	99	46.5%	5	31.3%	15	51.7%	5	38.5%	1	100.0%	5	71.4%	71	50.4%	201	47.9%
Unknown	0	0.0%	0	0.0%	0	0.0%	0	0.0%	0	0.0%	0	0.0%	0	0.0%	0	0.0%
Total	213	100.0%	16	100.0%	29	100.0%	13	100.0%	1	100.0%	7	100.0%	141	100%	420	100.0%
All U.S. Faculty																
Male	199	53.4%	15	60.0%	21	47.7%	15	57.7%	0	0.0%	2	28.6%	70	49.6%	322	52.1%
Female	174	46.6%	10	40.0%	23	52.3%	11	42.3%	2	100.0%	5	71.4%	71	50.4%	296	47.9%
Unknown	0	0.0%	0	0.0%	0	0.0%	0	0.0%	0	0.0%	0	0.0%	0	0.0%	0	0.0%
Total	373	100.0%	25	100.0%	44	100.0%	26	100.0%	2	100.0%	7	100.0%	141	100%	618	100.0%

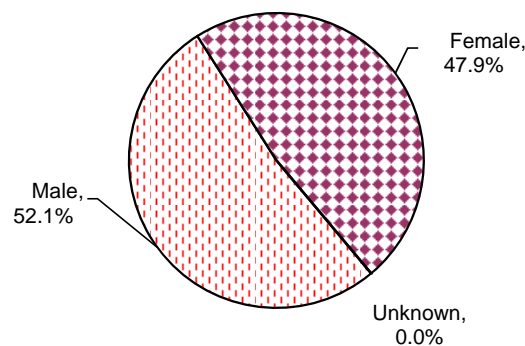
Ethnicity of All Faculty - Fall 2009



Teaching Status of All Faculty - Fall 2009



Gender of All Faculty - Fall 2008



Source: Full-time, Academic Affairs Office (prior to Fall 2006) and Human Resource (Fall 2006 and after); Part-Time, Institutional Research Census on November 15.

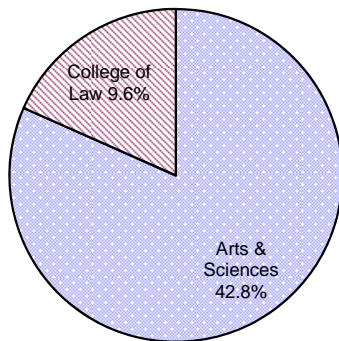
D-2: College and Rank of Full-Time Faculty Fall 2005-Fall 2009

College/School	Rank	Fall 2005		Fall 2006		Fall 2007		Fall 2008		Fall 2009	
College of Arts & Sciences	Professor	39	42.9%	36	43.4%	37	45.1%	37	46.3%	42	51.9%
	Associate Professor	39	42.9%	31	37.3%	29	35.4%	23	28.8%	21	25.9%
	Assistant Professor	12	13.2%	16	19.3%	16	19.5%	20	25.0%	18	22.2%
	Instructor	1	1.1%	0	0.0%	0	0.0%	0	0.0%	0	0.0%
Total		91	100.0%	83	100.0%	82	100.0%	80	100.0%	81	100.0%
College of Business & Public Management	Professor	17	50.0%	20	57.1%	22	62.9%	23	62.2%	25	69.4%
	Associate Professor	14	41.2%	12	34.3%	9	25.7%	7	18.9%	4	11.1%
	Assistant Professor	3	8.8%	2	5.7%	3	8.6%	6	16.2%	6	16.7%
	Visiting Professor	0	0.0%	1	2.9%	0	0.0%	0	0.0%	0	0.0%
Instructor	0	0.0%	0	0.0%	1	2.9%	1	2.7%	1	2.8%	
Total		34	100.0%	35	100.0%	35	100.0%	37	100.0%	36	100.0%
College of Education & Organizational Leadership	Professor	15	33.3%	16	31.4%	14	26.9%	14	26.9%	14	25.9%
	Associate Professor	12	26.7%	14	27.5%	14	26.9%	16	30.8%	17	31.5%
	Assistant Professor	18	40.0%	21	41.2%	24	46.2%	22	42.3%	23	42.6%
Total		45	100.0%	51	100.0%	52	100.0%	52	100.0%	54	100.0%
College of Law	Professor	8	47.1%	11	64.7%	11	61.1%	10	55.6%	11	52.4%
	Associate Professor	5	29.4%	3	17.6%	3	16.7%	3	16.7%	5	23.8%
	Assistant Professor	2	11.8%	3	17.6%	4	22.2%	5	27.8%	5	23.8%
	Visiting Professor	2	11.8%	0	0.0%	0	0.0%	0	0.0%	0	0.0%
Total		17	100.0%	17	100.0%	18	100.0%	18	100.0%	21	100.0%
Wilson Library*	Professor			1	12.5%	0	0.0%	3	42.9%	2	33.3%
	Associate Professor			5	62.5%	4	57.1%	0	0.0%	0	0.0%
	Assistant Professor			0	0.0%	2	28.6%	3	42.9%	4	66.7%
	Instructor			2	25.0%	1	14.3%	1	14.3%	0	0.0%
Total				8	100.0%	7	100.0%	7	100.0%	6	100.0%
All Colleges & Schools	Professor	79	42.2%	84	43.3%	84	43.3%	87	44.8%	94	47.5%
	Associate Professor	70	37.4%	65	33.5%	59	30.4%	49	25.3%	47	23.7%
	Assistant Professor	35	18.7%	42	21.6%	49	25.3%	56	28.9%	56	28.3%
	Visiting Professor	2	1.1%	1	0.5%	1	0.5%	1	0.5%	1	0.5%
	Instructor	1	0.5%	2	1.0%	1	0.5%	1	0.5%	0	0.0%
Total		187	100.0%	194	100.0%	194	100.0%	194	100.0%	198	100.0%

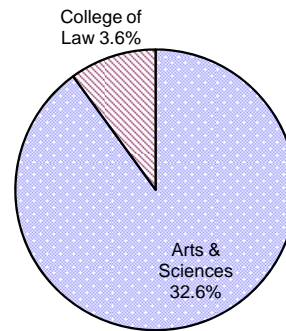
* The faculty of Wilson Library was included in College of Arts & Science before Fall 2006.

Source: Academic Affairs Office (Fall 2002- Fall 2005) and Human Resource (Fall 2006 and after).

Full-Time Faculty by College - Fall 2009



Part-Time Faculty by College - Fall 2009



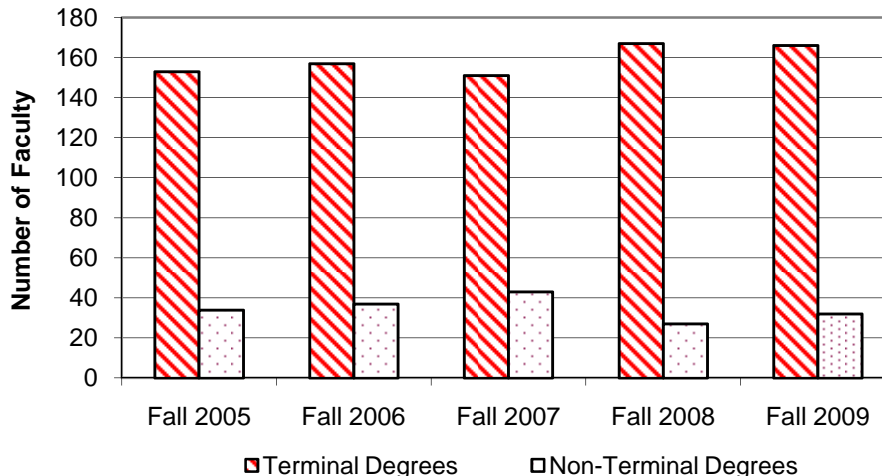
D-3: Highest Degree of Full-Time Faculty Fall 2005 - Fall 2009

Highest Degree	Fall 2005		Fall 2006		Fall 2007		Fall 2008		Fall 2009	
BA	1	0.5%	1	0.5%	1	0.5%	0	0.0%	0	0.0%
BCL**	1	0.5%	0	0.0%	0	0.0%	0	0.0%	0	0.0%
BS	0	0.0%	0	0.0%	0	0.0%	0	0.0%	0	0.0%
DA*	1	0.5%	1	0.5%	1	0.5%	1	0.5%	1	0.5%
DMA*	2	1.1%	1	0.5%	1	0.5%	1	0.5%	1	0.5%
DPA*	2	1.1%	2	1.0%	2	1.0%	3	1.5%	3	1.5%
EdD*	26	13.9%	25	12.9%	24	12.4%	23	11.9%	23	11.6%
JD*	20	10.7%	22	11.3%	24	12.4%	27	13.9%	27	13.6%
LLB*	1	0.5%	2	1.0%	1	0.5%	0	0.0%	0	0.0%
LLM*	1	0.5%	1	0.5%	0	0.0%	0	0.0%	0	0.0%
MA	15	8.0%	14	7.2%	19	9.8%	14	7.2%	13	6.6%
MA* (PEPPIT Criteria)	2	1.1%	1	0.5%	0	0.0%	3	1.5%	2	1.0%
MBA	1	0.5%	1	0.5%	0	0.0%	1	0.5%	0	0.0%
MBA* (PEPPIT Criteria)	2	1.1%	2	1.0%	3	1.5%	2	1.0%	2	1.0%
MEd	3	1.6%	3	1.5%	3	1.5%	2	1.0%	3	1.5%
MEd* (PEPPIT Criteria)	1	0.5%	1	0.5%	0	0.0%	0	0.0%	0	0.0%
MFA*	4	2.1%	6	3.1%	5	2.6%	5	2.6%	5	2.5%
MLA	0	0.0%	1	0.5%	1	0.5%	0	0.0%	1	0.5%
MLIS	0	0.0%	0	0.0%	0	0.0%	0	0.0%	1	1.0%
MLIS*	0	0.0%	0	0.0%	0	0.0%	0	0.0%	0	0.0%
MLS	0	0.0%	1	0.5%	3	1.5%	0	0.0%	3	1.5%
MLS* (PEPPIT Criteria)	1	0.5%	1	0.5%	0	0.0%	0	0.0%	0	0.0%
MS	12	6.4%	14	7.2%	14	7.2%	9	4.6%	10	5.1%
MS* (PEPPIT Criteria)	4	2.1%	1	0.5%	2	1.0%	3	1.5%	1	0.5%
MSLS	0	0.0%	1	0.5%	1	0.5%	0	0.0%	0	0.0%
MST*	0	0.0%	0	0.0%	0	0.0%	0	0.0%	0	0.0%
PhD*	87	46.5%	92	47.4%	89	45.9%	100	51.5%	102	51.5%
Total	187	100%	194	100%	194	100%	194	100%	198	100%
*Terminal Degrees	153	81.8%	157	80.9%	151	77.8%	167	86.1%	166	83.8%

** Bachelor of Civil Law

Source: Academic Affairs Office (Fall 2002- Fall 2005) and Human Resource (Fall 2006 and after).

**Highest Degree of Full-Time Faculty
Fall 2005 - Fall 2009**

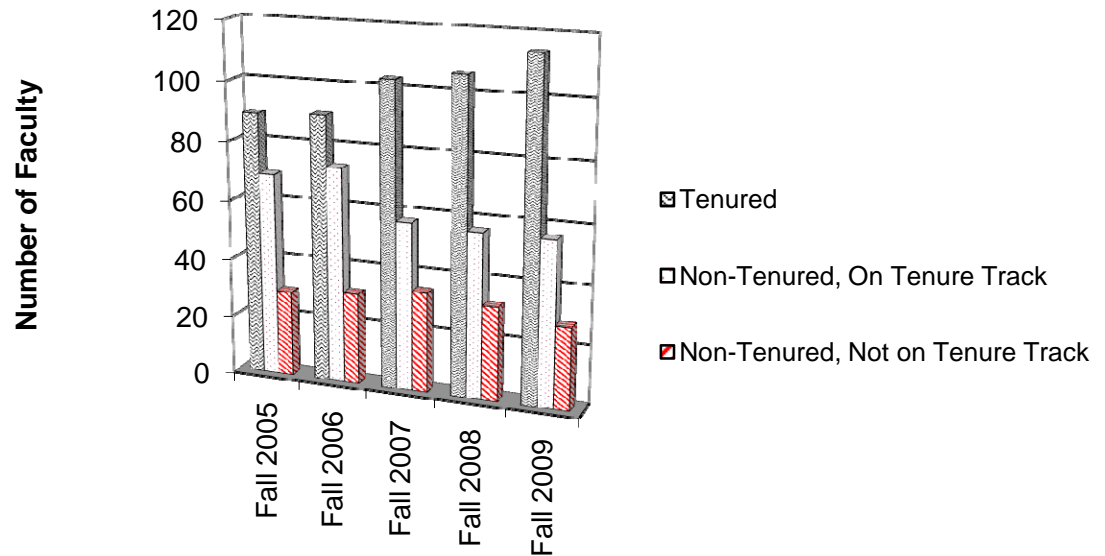


D-4: Tenure Status of Full-Time Faculty Fall 2005 - Fall 2009

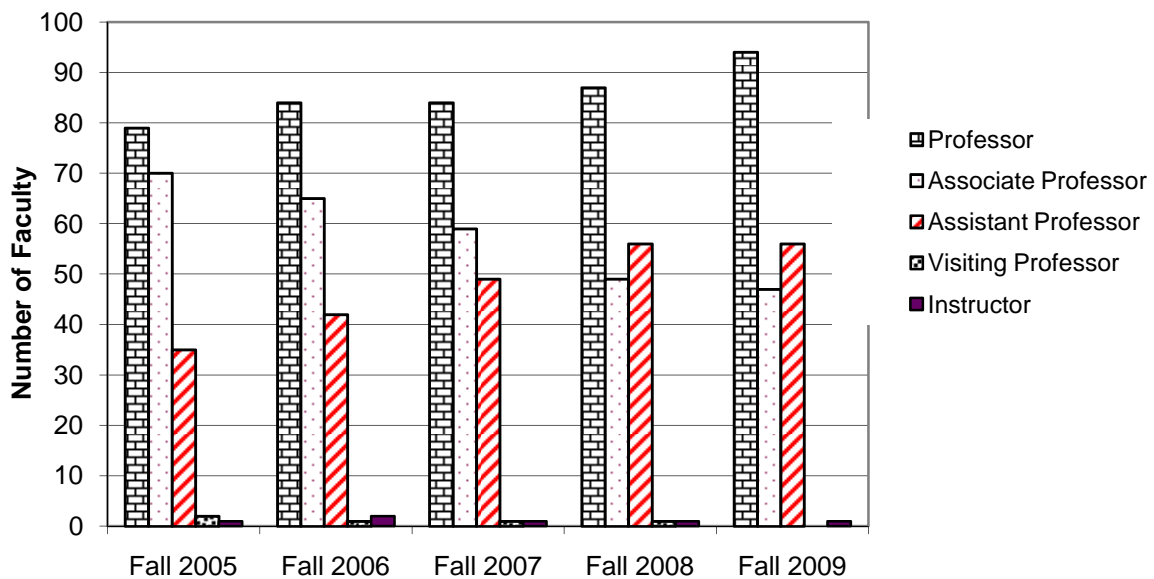
Tenure Status	Fall 2005		Fall 2006		Fall 2007		Fall 2008		Fall 2009	
Tenured	89	47.6%	90	46.4%	103	53.1%	106	54.6%	114	57.6%
Non-Tenured (On Tenure Track)	69	36.9%	73	37.6%	57	29.4%	56	28.9%	56	28.3%
Non-Tenured (Not on Tenure Track)	29	15.5%	31	16.0%	34	17.5%	32	16.5%	28	14.1%
Total	187	100%	194	100%	194	100%	194	100%	198	100%

Source: Academic Affairs Office (Fall 2002- Fall 2005) and Human Resource (Fall 2006 and after).

Tenure Status of Full-Time Faculty



Rank of Full-Time Faculty

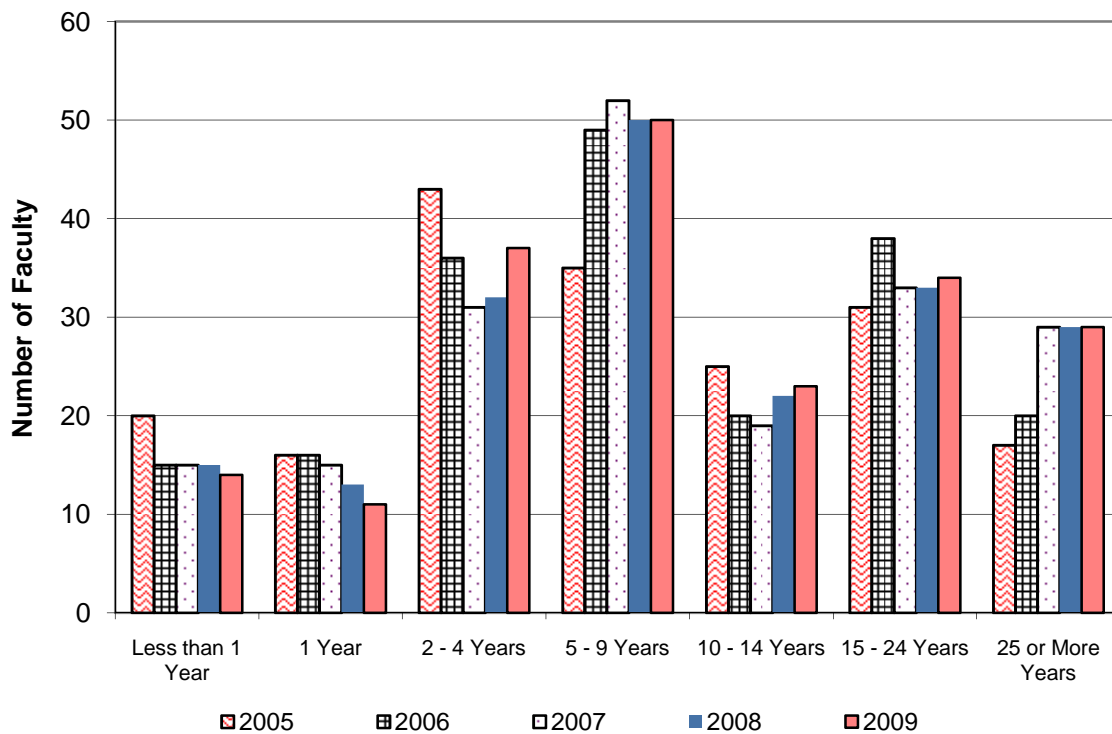


D-5: Years of Service of Full-Time Faculty Fall 2005 - Fall 2009

Years at ULV	2005	2006	2007	2008	2009
Less than 1 Year	20	15	15	15	14
1 Year	16	16	15	13	11
2 - 4 Years	43	36	31	32	37
5 - 9 Years	35	49	52	50	50
10 - 14 Years	25	20	19	22	23
15 - 24 Years	31	38	33	33	34
25 or More Years	17	20	29	29	29
Total Faculty	187	194	194	194	198

Source: Academic Affairs Office (Fall 2003- Fall 2005) and Human Resource (Fall 2006 and after).

**Years of Service of Full-Time Faculty
Fall 2004 - Fall 2009**



D-6: Gender, Ethnicity, and Appointment Status of La Verne Regularly-Contracted Staff by Position - Fall 2009

By Gender and Position

Gender	Administrative/ Professional		Classified		All Positions	
Male	90	37.8%	58	32.0%	148	35.3%
Female	148	62.2%	123	68.0%	271	64.7%
	238	100.0%	181	100.0%	419	100.0%

By Ethnicity and Position

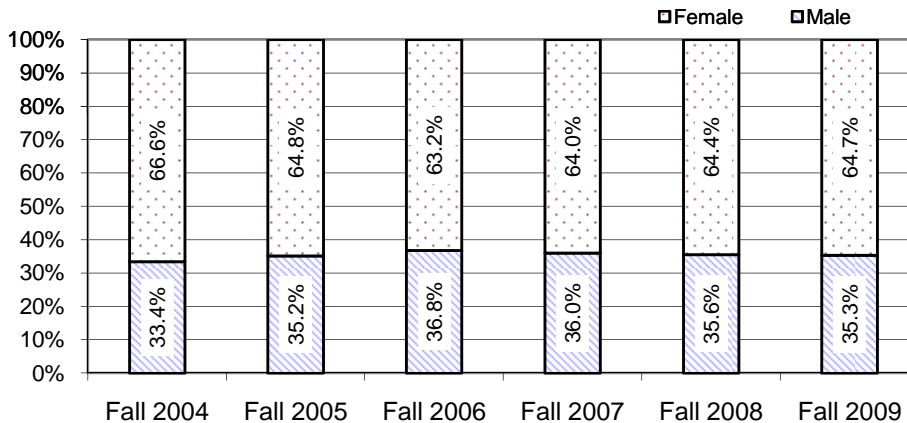
Ethnicity	Administrative/ Professional		Classified		All Positions	
Black, Non-Hispanic	19	8.0%	15	8.3%	34	8.1%
American Indian/Alaskan Native	1	0.4%	2	1.1%	3	0.7%
Asian/Pacific Islander	23	9.7%	16	8.8%	39	9.3%
Hispanic	38	16.0%	53	29.3%	91	21.7%
White, non-Hispanic	156	65.5%	95	52.5%	251	59.9%
Unknown	1	0.4%	0	0.0%	1	0.2%
	238	100.0%	181	100.0%	419	100.0%

By Appointment and Position

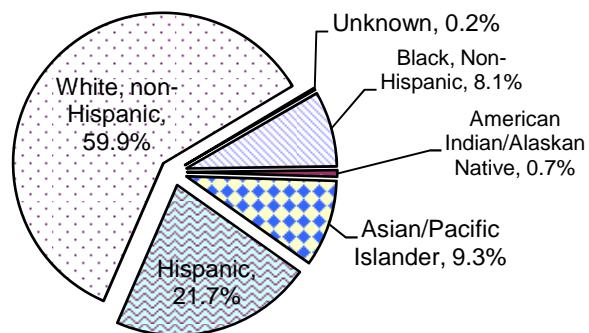
	Administrative/ Professional		Classified		All Positions	
Full-Time	220	92.4%	167	92.3%	387	92.4%
Part-Time	18	7.6%	14	7.7%	32	7.6%
Total Staff	238	100.0%	181	100.0%	419	100.0%

Source: Human Resources

Staff by Gender (Fall 2004 - Fall 2009)



Staff by Ethnicity - Fall 2009



E.
FINANCE
AND
FINANCIAL
AID

E-1: Finances for Fiscal Year 2004-05 through 2008-09

Assets	2004-05	2005-06	2006-07	2007-08	2008-09
Current Assets	64,818,655	78,089,346	92,466,119	114,097,417	97,935,970
Property, plant and equipment:					
Land	8,595,901	8,595,901	8,595,901	8,595,901	10,086,590
Buildings and improvements	49,520,017	54,232,327	61,154,112	61,690,726	84,465,517
Equipment	19,012,448	25,081,342	28,246,055	29,759,977	33,542,236
Asset Retirement capitalized costs		125,727	119,263	113,103	108,625
Construction in progress	<u>1,813,678</u>	<u>4,211,422</u>	<u>2,323,249</u>	<u>8,927,229</u>	<u>2,254,164</u>
	78,942,044	92,246,719	100,438,580	109,086,936	130,457,132
Less: Accumulated depreciation	(38,289,986)	(42,915,014)	(47,961,127)	(53,123,525)	(58,681,985)
Total property, plant and equipment	<u>40,652,058</u>	<u>49,331,705</u>	<u>52,477,453</u>	<u>55,963,411</u>	<u>71,775,147</u>
Total assets	105,470,713	\$127,421,051	\$144,943,572	170,060,828	169,711,117
Liabilities and Net Assets					
Liabilities	43,487,181	53,273,155	54,887,124	77,735,794	80,207,591
Net Assets	<u>61,983,532</u>	<u>74,147,896</u>	<u>90,056,448</u>	<u>92,325,034</u>	<u>89,503,526</u>
Total liabilities and net assets	105,470,713	\$127,421,051	\$144,943,572	170,060,828	169,711,117
Student Grants					
Pell grants	3,949,240	3,612,718	3,382,443	3,640,175	3,977,836
Other federal grants	987,862	857,065	769,219	865,950	887,310
State grants	7,685,589	7,985,972	7,443,366	6,783,666	6,069,314
Funded institutional grants	755,282	720,954	724,667	762,233	701,795
Unfunded institutional grants	<u>14,686,639</u>	<u>14,781,382</u>	<u>12,484,694</u>	<u>13,568,637</u>	<u>14,541,783</u>
Total student grants	28,064,612	27,958,091	24,804,389	25,620,661	26,178,038

Source: Audited Financial Statements/General Ledger

E-1: Finances for Fiscal Year 2004-05 through 2008-09 (Continued)

Sources of Funds	2004-05	2005-06	2006-07	2007-08	2008-09
Student tuition and fees	90,463,374	95,726,613	99,500,651	104,913,575	110,679,419
Less: Student financial aid	(16,695,746)	(17,096,534)	(16,816,310)	(17,163,069)	(20,139,009)
Net student tuition and fees	73,767,628	78,630,079	82,684,341	87,750,506	90,540,410
Private gifts and grants	5,190,813	10,321,740	7,465,609	4,037,981	2,450,603
Government grants (Federal and State)	1,355,109	1,114,701	1,002,533	1,276,193	2,374,065
Sponsored programs		413,918	558,787	499,935	245,451
Investment income	2,710,215	5,740,783	7,513,977	37,900	(8,210,511)
Auxiliary enterprises	4,333,370	4,236,733	4,108,151	4,118,527	4,149,991
Annuity and trust gifts	10,000	103,753	85,000	220,000	55,000
Premiums earned		1,088,845	1,503,506	1,330,530	42,415
Other	1,271,781	922,880	1,117,382	917,145	1,975,089
Total revenues	88,638,916	102,573,432	106,039,286	100,188,717	93,622,513
Expenses					
Instruction	42,967,152	41,252,341	42,028,834	44,061,791	43,589,596
Academic support	14,961,489	14,074,638	13,175,567	14,753,703	16,407,315
Student services	11,062,904	11,285,116	10,136,019	11,449,342	12,084,975
Institutional support	11,444,907	20,031,591	22,131,662	25,266,906	21,641,778
Auxiliary enterprises	4,557,232	3,765,382	2,658,652	2,388,119	2,720,357
Total expenses	84,993,684	90,409,068	90,130,734	97,919,861	96,444,021
Change in Net Assets	3,645,232	12,164,364	15,908,552	2,268,856	(2,821,508)
Net assets at beginning of year	58,338,300	61,983,532	74,147,896	90,056,448	92,325,034
Net assets at end of year	61,983,532	\$74,147,896	\$90,056,448	92,325,034	89,503,526

Source: Audited Financial Statements

**E-2: Financial Aid for Traditional-Age Full-Time Students
Fall 2005 - Fall 2009**

Enrolled Students Receiving Aid:

	Fall 2005		Fall 2006		Fall 2007		Fall 2008		Fall 2009	
	Freshmen	Undergrad	Freshmen	Undergrad	Freshmen	Undergrad	Freshmen	Undergrad	Freshmen	Undergrad
a) Number of degree-seeking undergraduate students	332	1579	314	1568	334	1590	297	1462	329	1432
b) Number of students in line a who were financial aid applicants (include applicants for all types of aid)	308	1387	289	1366	305	1367	258	1240	296	1255
c) Number of students in line b who were determined to have financial need	282	1306	249	1270	276	1271	240	1165	274	1187
d) Number of students in line c who received any financial aid	282	1304	149	1268	276	1264	239	1159	274	1183
e) Number of students in line d who received any need-based gift aid	233	1192	234	1184	251	1154	213	1061	186	1017
f) Number of students in line d who received any need-based self-help aid	86	356	216	1116	85	332	65	247	245	1112
g) Number of students in line d who received any non-need-based gift aid	239	1168	174	1088	217	1061	185	16	272	1025
h) Number of students in line d whose need was fully met (exclude PLUS loans, unsubsidized loans, and private alternative loans)	1	24	18	162	21	147	2	16	26	148
i) On average, the percentage of need that was met of students who received any need-based aid. Exclude any resources that were awarded to replace EFC (PLUS loans, unsubsidized loans, and private alternative loans)	70%	72%	64%	68%	50%	52%	50%	50%	47%	60%
j) The average financial aid package of those in line d. Exclude any resources that were awarded to replace EFC (PLUS loans, unsubsidized loans, and private alternative loans)	\$18,403	\$20,636	\$18,223	\$20,615	\$21,072	\$21,629	\$23,526	\$22,535	\$26,195	\$24,932
k) Average need-based gift award of those in line e	\$9,243	\$10,620	\$10,033	\$10,763	\$11,047	\$10,868	\$12,209	\$11,268	\$11,024	\$11,941
l) Average need-based self-help award (excluding PLUS loans, unsubsidized loans, and private alternative loans) of those in line f	\$1,783	\$2,163	\$2,324	\$3,207	\$2,928	\$2,836	\$3,292	\$3,100	\$4,814	\$5,372
m) Average need-based loan (excluding PLUS loans, unsubsidized loans, and private alternative loans) of those in line f who received a need-based loan	\$4,417	\$4,637	\$2,445	\$3,447	\$4,668	\$5,268	\$4,798	\$5,428	\$4,111	\$4,889

Number of Enrolled Students Receiving Non-Need-Based Grants and Sch

n) Number of students in line a who had no financial need and who received non-need-based gift aid (exclude those receiving athletic awards and tuition benefits)	42	211	66	384	40	217	30	183	36	160
o) Average dollar amount of non-need-based gift aid awarded to students in line n	\$8,988	\$7,929	\$8,890	\$6,792	\$9,400	\$7,954	\$11,333	\$8,489	\$17,758	\$15,146
p) Number of students in line a who received a non-need-based athletic grant or scholarship**	0	0	0	0	0	0	0	0	0	0
q) Average dollar amount of non-need-based athletic grants and scholarships awarded to students in line p	0	0	0	0	0	0	0	0	0	0

* "Freshmen" is for "First-Time Full-Time Freshmen", and "Undergrad" is for "Full-time Undergraduate, including Freshmen".

** The University does not grant non-need-based athletic grant or scholarship.

Source: Common Data Set; Financial Aid Office.