



Knowledge • Service • Vision

Fact Book

2004 – 2008

OFFICE OF INSTITUTIONAL RESEARCH, UNIVERSITY OF LA VERNE

UNIVERSITY OF LA VERNE FACT BOOK 2004-2008
8th Edition, January 2009

Editor:

Yingxia Cao, Director of Institutional Research
Office of Institutional Research, Academic Affairs
University of La Verne
La Verne, CA 91750
Tel: (909) 593-3511 ext. 4235
Fax: (909) 392-2709
Email: ycao@ulv.edu

Contributors:

Mark Nelson, Assistant Provost, Academic Affairs
Alfred Clark, Associate Vice President, Academic Affairs
James Schirmer, Senior Research Associate, Academic Affairs
Brett Schmitt, Program Analyst, Human Resource Department
James S. Irwin, Financial Operations Manager, Accounting Department
Fernando Ramos, Assistant Director, Financial Aid Office

This book is intended as a reference for the La Verne Community and may be quoted, without permission, using acceptable citation guidelines. Reproduction of complete tables, figures, or text must include a “University of La Verne Fact Book 2004-2008” notation and page number.

Information contained in the Fact Book is based on annual census data generated from the Banner student record system on November 15 and from various University offices. If you would like more information about the data, please contact the Office of Institutional Research. All information contained in this book is also available at the website of the Office of Institutional Research: <http://www.ulv.edu/ir/reports/factbooks/>.

TABLE OF CONTENTS

A. STUDENTS

A-1: Unduplicated Student Headcount by Campus/Program	1
A-2: Unduplicated Undergraduate Student Headcount by Major	2
A-3 to A-5: Unduplicated Graduate Student Headcount by Major	3
A-6: Unduplicated Student Headcount by Level, Major, and Campus – The College of Arts & Sciences	4
A-7: Unduplicated Student Headcount by Level, Major, and Campus - The College of Business & Public Management	5
A-8: Unduplicated Student Headcount by Level, Major, and Campus - The College of Education & Organizational Leadership	6
A-9: Student Registrations by Campus/Program	7
A-10: Student Full-Time Equivalent (FTE) by Campus/Program	8
A-11: Undergraduate Student FTE by Major	9
A-12 to A-14: Graduate Student FTE by Major	10
A-15: Change in Student FTE by Campus/Program and by College	11
A-16: Student Classification and Enrollment Status	12
A-17: Student Ethnicity and Gender	13
A-18: Student Age by Campus/Program and by Class	14
A-19: International Student	15

B. ADMISSIONS AND NEW STUDENTS

B-1 to B-2: Admission Statistics of Main Campus First-Time Traditional-Age Freshmen	16-17
B-3: Gender of New Main Campus Traditional-Age Freshman and Transfer Students ...	18
B-4: Ethnicity of New Main Campus Traditional-Age Freshman and Transfer Students	19
B-5: New Main Campus Traditional-Age Freshman SAT Scores	20
B-6: Entrance GPA of New Main Campus Traditional-Age Freshmen and Transfers.....	21
B-7: Top 15 High School Origins of New Main Campus Traditional-Age Freshmen...	22
B-8: Top 15 College Origins of New Main Campus Traditional-Age Transfers...	22
B-9: New Main Campus Traditional-Age Students by Geographic Region	23
B-10: New Main Campus Traditional-Age International Students by Geographic Region	24
B-11: New Main Campus Traditional-Age Freshmen by Major	25
B-12: New Main Campus Traditional-Age Transfers by Major	26
B-13: New RCA (Regional Campus Administration) Undergraduate Enrollment by Gender and Ethnicity	27

B-14: New RCA Undergraduate Enrollment by Major	28
B-15: Application, Acceptance, and Enrollment Statistics for the College of Law	29
B-16: New Main Campus Masters Students by Major/Credential	30
B-17: New Doctoral Students by Major/Credential	30
B-18: New RCA Masters Students by Major/Credential	31

C. PERFORMANCE INDICATORS

C-1: Student GPA by Level	32
C-2: Retention Rates for First-Time Full-Time Traditional-Age Freshman Cohort	33
C-3: Graduation Rates for First-Time Full-Time Traditional-Age Freshman (GRS) Cohort	33
C-4: The First Fall-to-Fall (First-Year) Retention Rates for Main Campus First-Time Full-Time Freshman Cohort by Ethnicity	34
C-5: Graduation Rates for Main Campus First-Time Freshman Cohort by Ethnicity	34
C-6: Retention Rates for Main Campus Full-Time Undergraduate Transfer Students	35
C-7: Graduation Rates for Main Campus Full-Time Undergraduate Transfer Students	35
C-8: Conferred Degrees for All Students by Type and by College	36
C-9: Conferred Bachelors Degrees	37
C-10: Conferred Graduate Degrees	38
C-11: Conferred Doctoral Degrees	38
C-12: Conferred Professional Doctoral Degrees	38

D. FACULTY AND STAFF

D-1: Gender and Ethnicity of All Faculty	39
D-2: College and Rank of Full-Time Faculty	40
D-3: Highest Degrees of Full-Time Faculty	41
D-4: Tenure Status of Full-Time Faculty	42
D-5: Years of Service of Full-Time Faculty	43
D-6: Gender, Ethnicity, and Appointment for Staff by Position	44

E. FINANCE & FINANCIAL AID

E-1: Fiscal Year Finances	45-46
E-2: Financial Aid for Traditional-Age Students	47

A. STUDENTS

All statistics are based on data from La Verne's census on November 15 for each year specified, unless otherwise noted.

**A-1: Unduplicated Student Headcount by Campus/Program
Fall 2004 - Fall 2008**

Main Campus Programs	Fall 2004		Fall 2005		Fall 2006		Fall 2007		Fall 2008	
Main Campus Undergraduate	1655	20.8%	1721	21.7%	1685	22.5%	1683	22.8%	1548	20.6%
Main Campus Graduate	1560	19.6%	1505	18.9%	1480	19.8%	1533	20.8%	1652	21.9%
DPA	111	1.4%	108	1.4%	105	1.4%	95	1.3%	95	1.3%
EdD	405	5.1%	340	4.3%	341	4.6%	291	3.9%	286	3.8%
PASC	1	0.0%	2	0.0%	2	0.0%	1	0.0%	1	0.0%
Law	221	2.8%	255	3.2%	263	3.5%	306	4.2%	349	4.6%
	3953	49.6%	3931	49.5%	3876	51.8%	3909	53.0%	3931	52.2%
Regional Campus Administration (RCA)										
CAPA	839	10.5%	817	10.3%	756	10.1%	695	9.4%	673	8.9%
Education	545	6.8%	574	7.2%	509	6.8%	454	6.2%	466	6.2%
ULV Online	104	1.3%	162	2.0%	216	2.9%	242	3.3%	277	3.7%
Teacher Credential (RCA Ed.)	158	2.0%	143	1.8%	164	2.2%	162	2.2%	150	2.0%
	1646	20.7%	1696	21.3%	1645	22.0%	1553	21.1%	1566	20.8%
Regional Campuses										
Bakersfield Credential***	85	1.1%	134	1.7%	110	1.5%	95	1.3%	95	1.3%
Central Coast	101	1.3%	124	1.6%	86	1.1%	94	1.3%	109	1.4%
High Desert Victorville	147	1.8%	145	1.8%	128	1.7%	108	1.5%	113	1.5%
Inland Empire	293	3.7%	284	3.6%	275	3.7%	310	4.2%	311	4.1%
Kern County/Bakersfield	165	2.1%	168	2.1%	157	2.1%	187	2.5%	182	2.4%
Orange County	414	5.2%	386	4.9%	336	4.5%	316	4.3%	306	4.1%
San Fernando Valley	439	5.5%	395	5.0%	362	4.8%	320	4.3%	346	4.6%
Ventura County	173	2.2%	179	2.3%	130	1.7%	111	1.5%	133	1.8%
	1817	22.8%	1815	22.8%	1584	21.2%	1541	20.9%	1595	21.2%
Regional Campuses on Military Bases										
Point Mugu	308	3.9%	266	3.3%	283	3.8%	257	3.5%	313	4.2%
Vandenberg	73	0.9%	62	0.8%	62	0.8%	59	0.8%	74	1.0%
	381	4.8%	328	4.1%	345	4.6%	316	4.3%	387	5.1%
Other Programs										
Ecumenical Centers (ABTC/ECBCS)	45	0.6%	50	0.6%	36	0.5%	29	0.4%	31	0.4%
EPIC	34	0.4%	28	0.4%	0	0.0%	24	0.3%	19	0.3%
	79	1.0%	78	1.0%	36	0.5%	53	0.7%	50	0.7%
Special Programs										
Cal Poly CLAD	93	1.2%	92	1.2%	0	0.0%	0	0.0%	0	0.0%
	93	1.2%	92	1.2%	0	0.0%	0	0.0%	0	0.0%
Campus not Designated	0	0.0%	9	0.1%	1	0.0%	0	0.0%	1	0.0%
Enrollment Total	7969	100.0%	7949	100.0%	7487	100.0%	7372	100.0%	7530	100.0%
Professional Development/Travel Learning	356	4.3%	375	4.5%	841	10.1%	1029	12.2%	1323	14.9%
Enrollment Grand Total	8325	100.0%	8324	100.0%	8328	100.0%	8401	100.0%	8853	100.0%

* Athens Campus was closed after Summer 2004. Thereafter, its students thereafter are classified under "Main Campus" since the 5th edition.

** End of Term enrollment figures; census day figures unavailable.

*** Bakersfield was formally under Main Campus Programs, but has been reported under Regional Campus Administration since this edition.

Source: Institutional Research Annual Census on November 15.

**A-2: Unduplicated Undergraduate Headcount by Major at all Campuses
Fall 2004 - Fall 2008**

Major	Fall 2004		Fall 2005		Fall 2006		Fall 2007		Fall 2008	
College of Arts & Sciences										
Athletic Training	30	0.7%	43	1.0%	41	1.0%	35	0.9%	40	1.0%
Anthropology	10	0.2%	9	0.2%	8	0.2%	12	0.3%	11	0.3%
Art	32	0.7%	28	0.6%	25	0.6%	35	0.9%	36	0.9%
Art History	4	0.1%	5	0.1%	11	0.3%	9	0.2%	6	0.2%
Behavioral Science	58	1.3%	35	0.8%	34	0.8%	32	0.8%	38	1.0%
Biology	84	1.9%	96	2.2%	115	2.8%	97	2.4%	76	1.9%
Broadcasting	37	0.8%	46	1.1%	46	1.1%	40	1.0%	29	0.7%
Chemistry	24	0.6%	28	0.6%	30	0.7%	27	0.7%	25	0.6%
Communications	85	2.0%	84	1.9%	87	2.1%	90	2.3%	73	1.9%
Comparative Literature	1	0.0%	0	0.0%	2	0.0%	1	0.0%	0	0.0%
Computer Science & Engineering	56	1.3%	45	1.0%	46	1.1%	37	0.9%	46	1.2%
Criminology	196	4.5%	180	4.1%	172	4.2%	174	4.4%	172	4.4%
English	78	1.8%	76	1.7%	68	1.7%	59	1.5%	53	1.4%
Environmental Biology	4	0.1%	1	0.0%	3	0.1%	6	0.2%	5	0.1%
Environmental Management	1	0.0%	1	0.0%	1	0.0%	0	0.0%	1	0.0%
French	0	0.0%	1	0.0%	1	0.0%	1	0.0%	0	0.0%
General Studies (AA)	0	0.0%	12	0.3%	0	0.0%	16	0.4%	8	0.2%
German	1	0.0%	0	0.0%	0	0.0%	1	0.0%	0	0.0%
History	43	1.0%	40	0.9%	39	1.0%	35	0.9%	29	0.7%
International Business & Language	15	0.3%	22	0.5%	21	0.5%	21	0.5%	22	0.6%
International Studies	5	0.1%	5	0.1%	3	0.1%	3	0.1%	6	0.2%
Journalism	42	1.0%	43	1.0%	43	1.0%	39	1.0%	31	0.8%
Legal Studies/Paralegal Studies	83	1.9%	92	2.1%	92	2.2%	84	2.1%	73	1.9%
Liberal Arts	15	0.3%	18	0.4%	12	0.3%	13	0.3%	12	0.3%
Mathematics	25	0.6%	23	0.5%	24	0.6%	20	0.5%	13	0.3%
Movement & Sports Science/Phys Ed	66	1.5%	66	1.5%	64	1.6%	66	1.7%	75	1.9%
Music	16	0.4%	13	0.3%	9	0.2%	9	0.2%	10	0.3%
Natural History/Science	2	0.0%	0	0.0%	0	0.0%	0	0.0%	0	0.0%
Philosophy	10	0.2%	6	0.1%	8	0.2%	13	0.3%	10	0.3%
Physics	5	0.1%	7	0.2%	6	0.1%	6	0.2%	7	0.2%
Political Science	55	1.3%	52	1.2%	54	1.3%	57	1.4%	60	1.5%
Psychology	263	6.0%	248	5.7%	257	6.3%	234	5.9%	233	5.9%
Religion	8	0.2%	5	0.1%	6	0.1%	9	0.2%	15	0.4%
Religion & Philosophy	5	0.1%	1	0.0%	8	0.2%	9	0.2%	8	0.2%
Social Science	22	0.5%	18	0.4%	18	0.4%	15	0.4%	21	0.5%
Sociology	70	1.6%	79	1.8%	75	1.8%	76	1.9%	67	1.7%
Spanish	7	0.2%	14	0.3%	16	0.4%	12	0.3%	9	0.2%
Speech Communication	12	0.3%	22	0.5%	35	0.9%	31	0.8%	20	0.5%
Theatre Arts	22	0.5%	28	0.6%	26	0.6%	22	0.6%	24	0.6%
Student Designed Majors	3	0.1%	2	0.0%	1	0.0%	3	0.1%	4	0.1%
	1495	34.3%	1494	34.2%	1507	36.8%	1449	36.3%	1368	34.9%
College of Business & Public Management										
Accounting	61	1.4%	66	1.5%	56	1.4%	70	1.8%	72	1.8%
Business Administration	884	20.3%	854	19.6%	791	19.3%	804	20.1%	761	19.4%
Business Management	0	0.0%	4	0.1%	62	1.5%	64	1.6%	55	1.4%
E-Commerce	4	0.1%	11	0.3%	6	0.1%	4	0.1%	8	0.2%
Economics	7	0.2%	9	0.2%	7	0.2%	12	0.3%	20	0.5%
Health Administration	68	1.6%	51	1.2%	36	0.9%	24	0.6%	22	0.6%
Marketing	19	0.4%	20	0.5%	9	0.2%	2	0.1%	0	0.0%
Organizational Management	577	13.3%	541	12.4%	493	12.0%	486	12.2%	574	14.6%
Public Administration	92	2.1%	90	2.1%	85	2.1%	96	2.4%	123	3.1%
Student Designed Majors	7	0.2%	3	0.1%	1	0.0%	0	0.0%	0	0.0%
	1712	39.3%	1649	37.8%	1546	37.7%	1562	39.1%	1635	41.7%
College of Education & Organizational Leaders										
Child Development	374	8.6%	426	9.8%	414	10.1%	358	9.0%	327	8.3%
Diversified Education/Liberal Studies	468	10.7%	543	12.4%	491	12.0%	478	12.0%	462	11.8%
Multiple Subject (Credential)	12	0.3%	7	0.2%	6	0.1%	6	0.2%	4	0.1%
Single Subject (Credential)	1	0.0%	3	0.1%	5	0.1%	1	0.0%	5	0.1%
	855	19.6%	979	22.4%	916	22.3%	843	21.1%	798	20.3%
Major not declared	292	6.7%	245	5.6%	130	3.2%	141	3.5%	121	3.1%
Total Undergraduate Majors	4354	100.0%	4367	100.0%	4099	100.0%	3995	100.0%	3922	100.0%

Source: Institutional Research Annual Census on November 15.

**A-3: Unduplicated Masters Student Headcount by Major/Credential at All Campuses
Fall 2004 - Fall 2008**

Major	Fall 2004		Fall 2005		Fall 2006		Fall 2007		Fall 2008	
College of Arts & Sciences										
Counseling (Concentration/Special Emphasis)	25	0.8%	29	0.9%	24	0.7%	27	1.0%	30	1.1%
Marriage & Family Therapy (MFT)	76	2.4%	80	2.5%	81	2.3%	69	2.6%	79	2.8%
Student Designed Major	0	0.0%	0	0.0%	0	0.0%	0	0.0%	1	0.0%
	101	3.3%	109	3.4%	105	3.0%	96	3.7%	110	3.9%
College of Business & Public Management										
Business Administration	668	21.5%	697	21.9%	727	21.0%	795	30.4%	890	31.9%
Business Information Technology	12	0.4%	5	0.2%	6	0.2%	6	0.2%	8	0.3%
Business Organizational Management	36	1.2%	27	0.8%	34	1.0%	26	1.0%	18	0.6%
Gerontology	32	1.0%	34	1.1%	38	1.1%	35	1.3%	34	1.2%
Health Services Administration	55	1.8%	40	1.3%	33	1.0%	43	1.6%	65	2.3%
Leadership & Management*	94	3.0%	84	2.6%	90	2.6%	95	3.6%	173	6.2%
Public Administration	51	1.6%	61	1.9%	62	1.8%	69	2.6%	76	2.7%
Student Designed Major	0	0.0%	1	0.0%	0	0.0%	1	0.0%	0	0.0%
	948	30.5%	948	29.8%	990	28.7%	1070	40.9%	1264	45.3%
College of Education & Organizational Leadership										
Child Development	45	1.4%	76	2.4%	63	1.8%	21	0.8%	28	1.0%
Child Life	21	0.7%	25	0.8%	25	0.7%	43	1.6%	44	1.6%
Educational Management	175	5.6%	179	5.6%	152	4.4%	70	2.7%	67	2.4%
Multiple Subject (Credential)	244	7.9%	269	8.5%	231	6.7%	217	8.3%	210	7.5%
Preliminary Administrative Services (Credential)	35	1.1%	34	1.1%	21	0.6%	10	0.4%	5	0.2%
Pupil Personnel Services (Credential)	6	0.2%	3	0.1%	5	0.1%	12	0.5%	11	0.4%
Reading	82	2.6%	63	2.0%	63	1.8%	46	1.8%	41	1.5%
School/Educational Counseling	310	10.0%	363	11.4%	407	11.8%	481	18.4%	528	18.9%
Single Subject (Credential)	180	5.8%	165	5.2%	124	3.6%	124	4.7%	111	4.0%
Special Education	41	1.3%	42	1.3%	41	1.2%	46	1.8%	40	1.4%
Special Emphasis	413	13.3%	346	10.9%	367	10.6%	307	11.8%	271	9.7%
Special Emphasis: Advanced Teaching Methods	40	1.3%	44	1.4%	0	0.0%	0	0.0%	0	0.0%
Student Designed Majors	0	0.0%	0	0.0%	0	0.0%	2	200.0%	0	0.0%
	1592	51.3%	1609	50.5%	1499	43.4%	1379	252.7%	1356	48.6%
Major not Declared**	463	14.9%	517	16.2%	861	24.9%	67	2.6%	58	2.1%
Total Masters Majors	3104	100%	3183	100%	3455	100%	2612	300%	2788	100%

**A-4: Unduplicated Doctoral Student Headcount by Major/Credential at All Campuses
Fall 2004 - Fall 2008**

Major	Fall 2004		Fall 2005		Fall 2006		Fall 2007		Fall 2008	
Clinical-Community Psychology (PsyD)	60	10.4%	67	12.9%	61	11.9%	69	15.1%	86	18.3%
Educational/Organizational Leadership/Management (EdD)	373	64.6%	329	63.5%	340	66.5%	290	63.5%	285	60.6%
Professional Administrative Services (Credential)	1	0.2%	2	0.4%	2	0.4%	1	0.2%	2	0.4%
Public Administration (DPA)	111	19.2%	109	21.0%	106	20.7%	96	21.0%	95	20.2%
	545	94.5%	507	97.9%	509	99.6%	456	99.8%	468	99.6%
Major not Declared	32	5.5%	11	2.1%	2	0.4%	1	0.2%	2	0.4%
Total Doctoral Majors	577	100%	518	100%	511	100%	457	100%	470	100%

**A-5: Unduplicated First Professional Student Headcount by Major at All Campuses
Fall 2004 - Fall 2008**

Major	Fall 2004		Fall 2005		Fall 2006		Fall 2007		Fall 2008	
First Professional (JD)	221	100.0%	255	100.0%	263	100.0%	306	100.0%	349	100.0%
Total First Professional Majors	221	100.0%	255	100.0%	263	100.0%	306	100.0%	349	100.0%

* Leadership & Management was organized under the College of Education & Organizational Leadership since the 5th edition of this Fact Book.

** Non-degree professional development students are not included.

Source: Institutional Research Annual Census on November 15.

A-6: Unduplicated Student Headcount by Level, Major, and Campus*
College of Arts and Science - Fall 2008

MAJOR	Main Campus	CAPA	Ecumenical Centers	EPIC	Point Mugu Center	ULV On- Line
Undergraduate						
Anthropology	8	3				
Art	28	8				
Art History	2	4				
Athletic Training	40					
Behavioral Science	9	29				
Biology	75	1				
Broadcasting	28	1				
Chemistry	23	2				
Communications	70	3				
Computer Sci & Engineering	36	9				
Computer Science	1					
Creative Writing	3					
Criminology	71	29			63	9
English	39	14				
Environmental Biology	5					
Environmental Mgmt	0	1				
General Studies	0			8		
History	25	4				
International Studies	6					
Intl Business&Language	21					
Journalism	30	1				
Legal Studies	19	54				
Liberal Arts	11	1				
Mathematics	11	2				
Movement&Sports Science	66	9				
Music	8	2				
Philosophy	10					
Physics	7					
Political Science	55	5				
Psychology	148	52	5		28	
Religion	2		13			
Religion&Philosophy	2	2	4			
Social Science	9	12				
Sociology	32	35				
Spanish	7	2				
Speech Communications	20					
Theatre	24					
Writing & Contemporary Culture	1					
Major Not Declared	49	3	9	11		
	1001	288	31	19	91	9
Masters						
Counseling	30					
Coun/Marriage&Family Therapy	1					
Marriage and Family Therapy	8					
Marriage Family Therapy	70					
Major Not Declared	10				1	1
Total Master's Level Students	119	0	0	0	1	1
Doctoral						
Clinical-Community Psychology	86	0	0	0	0	
Grand Total	1206	288	31	19	92	10

* Non-degree professional development students are not included.

Source: Institutional Research Annual Census on November 15.

**A-7: Unduplicated Student Headcount by Level, Major, and Campus
College of Business and Public Management - Fall 2008**

MAJOR	Main Campus	Dr of Publ ic	CAPA	ULV On-Line	Central Coast Campus	High Desert Victorville Campus	Inland Empire Campus	Kern County Campus	Orange County Campus	Point Mugu Center	San Fernando Valley Campus	Vanden berg Center	Ventura County Campus
Undergraduate													
Accounting	40		32	0									
Business Administration	251		100	0	23	27	84	26	75	38	93	13	31
Business Management	0		2	0		3	34		16				
Economics	20			0									
E-Commerce	6			0									
Health Administration	0			0		6	16						
Intl Business&Language	1			0									
Organizational Management	4		120	127	0	13	27	27	25	165	29	18	19
Public Administration	13		24	42			23	1	2		18		
Major Not Declared	0			0		1						1	
	335	0	278	169	23	50	184	54	118	203	140	32	50
Masters													
Business Administration	487			98	14	10	41		90		94	33	23
Business Information Technology	8												
Business Organizational Mgmt										18			
Gerontology	33												1
Health Administration	48						1		14				
Health Services Administration	2												
Leadership & Mgmt	105						43		1		6	9	9
Public Administration	72								4				
Major Not Declared	5	0	0	0	0	0	0	0	0	0	0	0	0
	760	0	0	98	14	10	85	0	109	18	100	42	33
Doctoral													
Public Administration	0	95	0	0	0	0	0	0	0	0	0	0	0
Grand Total	1095	95	278	267	37	60	269	54	227	221	240	74	83

* Non-degree professional development students are not included.
Source: Institutional Research Annual Census on November 15.

A-8: Unduplicated Student Headcount by Level, Major, and Campus*
College of Education and Organizational Leadership - Fall 2008

MAJOR	Main Campus	EdD	PASC II**	Bakersfield Teacher Education	CAPA	mnm	High Desert Victorville Campus	Inland Empire Campus	Kern County Campus	Orange County Campus	RC Education	RC Teacher Education	San Fernando Valley Campus	Ventura County Campus
Undergraduate														
Child Development	22	0	0	0	31	40	7	27	0	79	0	0	94	27
Multiple Subject	4	0	0	0	0	0	0	0	0	0	0	0	0	0
Single Subject	2	0	0	1	0	0	0	0	0	0	0	2	0	0
Liberal Studies	139	0	0	0	73	31	45	15	126	0	0	0	11	22
Major Not Declared	11	0	0	0	0	0	0	0	0	0	0	0	0	0
	178	0	0	1	104	71	52	42	126	79	0	2	105	49
Masters														
Child Development	28	0	0	0	0	0	0	0	0	0	0	0	0	0
Child Life	44	0	0	0	0	0	0	0	0	0	0	0	0	0
Educational Counseling	109	0	0	0	0	0	0	0	0	0	381	0	0	0
Educational Management	22	0	0	0	0	0	0	0	0	0	45	0	0	0
Mild/Mod Educ Specialst Lvl II	1	0	0	0	0	0	0	0	0	0	0	0	0	0
Multiple Subject	139	0	0	33	0	1	1	0	2	0	0	33	0	1
Preliminary Admin Services	4	0	0	0	0	0	0	0	0	0	1	0	0	0
Pupil Personnel Services	5	0	0	0	0	0	0	0	0	0	4	0	0	0
Pupil Prsnl Serv in School Psy	2	0	0	0	0	0	0	0	0	0	0	0	0	0
Reading	41	0	0	0	0	0	0	0	0	0	0	0	0	0
School Counseling		0	0	0	0	0	0	0	0	0	3	0	0	0
School Psychology	35	0	0	0	0	0	0	0	0	0	0	0	0	0
Single Subject	71	0	0	13	0	0	0	0	0	0	0	27	0	0
Special Education	24	0	0	15	0	0	0	0	0	0	0	0	0	0
Special Emphasis	149	0	0	32	0	0	0	0	0	0	2	88	0	0
Major Not Declared	10	0	0	1	0	0	0	0	0	0	30	0	0	0
	684	0	0	94	0	1	1	0	2	0	466	148	0	1
Doctoral														
Educational Leadership	0	27	0	0	0	0	0	0	0	0	0	0	0	0
Organizational Leadership	0	258	0	0	0	0	0	0	0	0	0	0	0	0
Professional Admin Services	1		1	0	0	0	0	0	0	0	0	0	0	0
Major Not Declared	1	1	0	0	0	0	0	0	0	0	0	0	0	0
	2	286	1	0	0	0	0	0	0	0	0	0	0	0
Grand Total	864	286	1	95	104	72	53	42	128	79	466	150	105	50

* Non-degree professional development students are not included.

** Professional Administrative Services Credential Program (EdD).

Source: Institutional Research Annual Census on November 15.

A-9: Student Registrations by Campus/Program*
Fall 2004 - Fall 2008

Main Campus Programs	Fall 2004		Fall 2005		Fall 2006		Fall 2007		Fall 2008	
Main Campus Undergraduate	2959	30.9%	2903	30.3%	2565	29.1%	2507	28.6%	2308	26.3%
Main Campus Graduate	1660	17.3%	1641	17.1%	1589	18.0%	1791	20.4%	1772	20.2%
DPA	111	1.2%	98	1.0%	115	1.3%	0	0.0%	107	1.2%
EdD	407	4.3%	349	3.6%	357	4.1%	299	3.4%	294	3.3%
PASC	13	0.1%	21	0.2%	17	0.2%	4	0.0%	5	0.1%
Law	237	2.5%	329	3.4%	362	4.1%	420	4.8%	457	5.2%
	5387	56.3%	5341	55.7%	5005	56.8%	5021	57.2%	4943	56.3%
Regional Campus Administration (RCA)										
CAPA	809	8.4%	793	8.3%	719	8.2%	730	8.3%	670	7.6%
Education	541	5.6%	589	6.1%	533	6.1%	490	5.6%	500	5.7%
ULV Online	393	4.1%	492	5.1%	531	6.0%	575	6.6%	594	6.8%
Teacher Credential (RCA Ed.)	160	1.7%	147	1.5%	164	1.9%	172	2.0%	159	1.8%
	1903	19.9%	2021	21.1%	1947	22.1%	1967	22.4%	1923	21.9%
Regional Campuses										
Bakersfield Credential	154	1.6%	154	1.6%	132	1.5%	112	1.3%	108	1.2%
Central Coast	98	1.0%	119	1.2%	85	1.0%	89	1.0%	101	1.2%
High Desert Victorville	144	1.5%	142	1.5%	118	1.3%	103	1.2%	109	1.2%
Inland Empire	289	3.0%	259	2.7%	240	2.7%	289	3.3%	300	3.4%
Kern County/Bakersfield	126	1.3%	155	1.6%	158	1.8%	180	2.1%	167	1.9%
Orange County	365	3.8%	343	3.6%	304	3.5%	270	3.1%	264	3.0%
San Fernando Valley	408	4.3%	364	3.8%	331	3.8%	288	3.3%	322	3.7%
Ventura County	158	1.6%	161	1.7%	111	1.3%	110	1.3%	125	1.4%
	1742	18.2%	1697	17.7%	1479	16.8%	1441	16.4%	1496	17.0%
Regional Campuses on Military Bases										
Eielson/Ft. Wainwright	2	0.0%	0	0.0%	0	0.0%	0	0.0%	0	0.0%
Point Mugu	300	3.1%	296	3.1%	284	3.2%	243	2.8%	303	3.5%
Vandenberg	68	0.7%	60	0.6%	52	0.6%	43	0.5%	63	0.7%
	370	3.9%	356	3.7%	336	3.8%	286	3.3%	366	4.2%
Other Programs										
Ecumenical Centers (ABTC/ECBCS)	46	0.5%	54	0.6%	37	0.4%	33	0.4%	34	0.4%
EPIC	34	0.4%	31	0.3%	0	0.0%	24	0.3%	19	0.2%
	80	0.8%	85	0.9%	37	0.4%	57	0.6%	53	0.6%
Special Programs										
Cal Poly CLAD	94	1.0%	92	1.0%	0	0.0%	0	0.0%	0	0.0%
	94	1.0%	92	1.0%	0	0.0%	0	0.0%	0	0.0%
Enrollment Total	9576	100.0%	9592	100.0%	8804	100.0%	8772	100.0%	8781	100.0%
Professional Development/Travel Learning	372	3.7%	395	4.0%	846	8.8%	1032	10.5%	1324	13.1%
Grand Total	9948	100.0%	9987	100.0%	9650	100.0%	9804	100.0%	10105	100.0%

* The numbers in this page are based on student course campus, where the students actually took the courses during the term. A correction is made to Fall 2006 data.

** End of Term enrollment figures; census day figures unavailable.

*** Athens Campus was closed after Summer 2004. Thereafter, its students thereafter are classified under "Main Campus" since the 5th edition.

Source: Institutional Research Annual Census on November 15.

**A-10: Student Full-Time Equivalent (FTE) by Campus/Program
Fall 2004 - Fall 2008 and Academic Year 2004-05 through 2007-08***

Main Campus Programs	Fall 2004		Fall 2005		Fall 2006		Fall 2007		Fall 2008		IPEDS 2004-05		IPEDS 2005-06		IPEDS 2006-07		IPEDS 2007-08	
Main Campus Undergraduate	1603.5	24.0%	1697.7	25.0%	1635.7	24.0%	1636.5	23.6%	1504.6	20.6%	1741.0	27.3%	1714.6	25.7%	1714.3	25.0%	1691.3	23.6%
Main Campus Graduate	1275.3	19.1%	1204.6	17.8%	1211.1	17.8%	1265.2	18.3%	1376.9	18.8%	1055.7	16.5%	1106.5	16.6%	1143.8	16.7%	1188.6	16.6%
DPA	67.3	1.0%	59.3	0.9%	61.6	0.9%	51.4	0.7%	62.4	0.9%	46.0	0.7%	42.7	0.6%	40.0	0.6%	37.2	0.5%
EdD	267.9	4.0%	213.5	3.1%	197.3	2.9%	159.0	2.3%	154.9	2.1%	174.9	2.7%	145.6	2.2%	139.8	2.0%	110.1	1.5%
PASC	0.8	0.0%	0.7	0.0%	2.1	0.0%	0.6	0.0%	0.6	0.0%	8.2	0.1%	1.0	0.0%	0.8	0.0%	0.2	0.0%
Law	306.2	4.6%	364.0	5.4%	371.8	5.5%	434.8	6.3%	493.2	6.7%	242.5	3.8%	284.0	4.2%	308.5	4.5%	348.1	4.9%
	3521.0	52.8%	3539.9	52.2%	3479.5	51.1%	3547.5	51.3%	3592.7	49.1%	3268.3	51.2%	3294.5	49.3%	3347.1	48.8%	3375.5	47.1%
CAPA	518.5	7.8%	505.2	7.4%	442.3	6.5%	411.1	5.9%	408.2	5.6%	596.5	9.3%	533.1	8.0%	483.0	7.0%	444.3	6.2%
Education	401.7	6.0%	448.8	6.6%	395.3	5.8%	368.0	5.3%	372.8	5.1%	368.0	5.8%	411.7	6.2%	385.2	5.6%	388.2	5.4%
ULV Online	83.8	1.3%	116.5	1.7%	165.8	2.4%	180.1	2.6%	203.4	2.8%	88.6	1.4%	118.7	1.8%	159.0	2.3%	168.6	2.4%
Teacher Credential (RCA Ed.)	165.3	2.5%	165.6	2.4%	183.2	2.7%	170.9	2.5%	149.5	2.0%	112.2	1.8%	139.9	2.1%	153.5	2.2%	145.4	2.0%
	1169.3	17.5%	1236.1	18.2%	1186.6	17.4%	1130.1	16.3%	1134.0	15.5%	1165.3	18.3%	1203.5	18.0%	1180.6	17.2%	1146.4	16.0%
Regional Campuses																		
Bakersfield Credential***	69.7	1.0%	100.8	1.5%	82.3	1.2%	67.8	1.0%	64.8	0.9%	95.7	1.5%	96.9	1.4%	89.6	1.3%	74.6	1.0%
Central Coast	83.7	1.3%	94.9	1.4%	68.0	1.0%	61.3	0.9%	83.3	1.1%	72.0	1.1%	89.5	1.3%	61.9	0.9%	71.0	1.0%
High Desert Victorville	102.8	1.5%	107.9	1.6%	93.8	1.4%	86.1	1.2%	100.3	1.4%	84.7	1.3%	95.0	1.4%	85.8	1.3%	82.1	1.1%
Inland Empire	202.0	3.0%	191.0	2.8%	180.0	2.6%	202.0	2.9%	197.4	2.7%	176.1	2.8%	183.0	2.7%	177.4	2.6%	193.2	2.7%
Kern County/Bakersfield	144.3	2.2%	143.1	2.1%	128.3	1.9%	165.0	2.4%	163.8	2.2%	117.8	1.8%	128.4	1.9%	116.0	1.7%	137.3	1.9%
Orange County	246.3	3.7%	239.0	3.5%	205.0	3.0%	188.5	2.7%	188.0	2.6%	231.1	3.6%	230.0	3.4%	188.9	2.8%	183.3	2.6%
San Fernando Valley	286.4	4.3%	265.0	3.9%	241.1	3.5%	202.6	2.9%	209.8	2.9%	249.4	3.9%	257.2	3.8%	229.8	3.3%	205.3	2.9%
Ventura County	124.0	1.9%	124.5	1.8%	84.3	1.2%	70.6	1.0%	96.5	1.3%	104.1	1.6%	112.8	1.7%	78.5	1.1%	74.0	1.0%
	1259.2	18.9%	1266.2	18.7%	1082.7	15.9%	1043.8	15.1%	1103.9	15.1%	1130.9	17.7%	1192.8	17.8%	1027.9	15.0%	1020.8	14.2%
Regional Campuses on Military Bases																		
Eielson/Ft. Wainwright	0.0	0.0%	0.0	0.0%	0.0	0.0%	0.0	0.0%	0.0	0.0%	0.0	0.0%	0.0	0.0%	0.0	0.0%	0.0	0.0%
Elmendorf	0.0	0.0%	0.0	0.0%	0.0	0.0%	0.0	0.0%	0.0	0.0%	0.3	0.0%	0.0	0.0%	0.0	0.0%	0.0	0.0%
Point Mugu	267.0	4.0%	218.8	3.2%	242.3	3.6%	220.1	3.2%	261.9	3.6%	213.5	3.3%	218.8	3.3%	225.8	3.3%	221.0	3.1%
Vandenberg	57.7	0.9%	48.5	0.7%	47.0	0.7%	44.0	0.6%	57.5	0.8%	44.8	0.7%	49.0	0.7%	47.7	0.7%	50.5	0.7%
	324.7	4.9%	267.3	3.9%	289.3	4.3%	264.1	3.8%	319.4	4.4%	258.6	4.1%	267.8	4.0%	273.5	4.0%	271.5	3.8%
Other Programs																		
Ecumenical Centers (ABTC/ECBCS)	28.4	0.4%	31.9	0.5%	21.3	0.3%	18.0	0.3%	17.6	0.2%	26.5	0.4%	29.0	0.4%	19.6	0.3%	16.9	0.2%
EPIC**	16.8	0.3%	15.2	0.2%	0.0	0.0%	15.2	0.2%	24.4	0.3%	25.0	0.4%	19.2	0.3%	16.9	0.2%	24.4	0.3%
	45.2	0.7%	47.1	0.7%	21.3	0.3%	33.2	0.5%	42.0	0.6%	51.5	0.8%	48.2	0.7%	36.5	0.5%	41.3	0.6%
Special Programs																		
Cal Poly CLAD	44.0	0.7%	46.6	0.7%	0.0	0.0%	0.0	0.0%	0.0	0.0%	52.6	0.8%	17.1	0.3%	0.0	0.0%	0.0	0.0%
Professional Development/Travel Learni	308.2	4.6%	374.0	5.5%	746.2	11.0%	901.8	13.0%	1120.3	15.3%	430.2	6.7%	649.1	9.7%	993.4	14.5%	1313.5	18.3%
	352.2	5.3%	420.6	6.2%	746.2	11.0%	901.8	13.0%	1120.3	15.3%	482.8	7.6%	666.2	10.0%	993.4	14.5%	1313.5	18.3%
Overseas Campuses/Programs																		
Athens**	0.0	0.0%	0.0	0.0%	0.0	0.0%	0.0	0.0%	0.0	0.0%	0.0	0.0%	0.0	0.0%	0.0	0.0%	0.0	0.0%
	0.0	0.0%	0.0	0.0%	0.0	0.0%	0.0	0.0%	0.0	0.0%	0.0	0.0%	0.0	0.0%	0.0	0.0%	0.0	0.0%
Campus not Designated	0.0	0.0%	6.2	0.1%	1.0	0.0%	0.0	0.0%	0.0	0.0%	26.3	0.4%	10.0	0.1%	3.7	0.1%	3.8	0.1%
Enrollment Grand Total****	6671.6	100.0%	6783.4	100.0%	6806.5	100.0%	6920.6	100.0%	7312.3	100.0%	6383.7	100.0%	6683.0	100.0%	6862.8	100.0%	7172.8	100.0%

* Since *Fact Book 2001-2005*, two types of FTEs are provided: (1) ULV defined FTE for accreditation purposes and (2) IPEDs (Integrated Postsecondary Education Data System) defined FTE. For the purpose of accreditation, ULV defines FTE differently for undergraduate students and graduate students across different campuses. ULV defined FTE is calculated as follows:

credit hours divided by 8; CAPA students, term credit hours divided by 12, and other regional campuses students, term credit hours divided by 8; Bakersfield Credential students, credit hours divided by 8; and CalPolyCLAD students, semester hours divided by 9.

(Tier 1), term hours divided by 9, and Doctoral (Tier 2), term hours divided by 6; DPA, EdD, and Bakersfield Credential students, term credit hours divided by 9; Law students, term hours divided by 9; Regional Campus students, term hours divided by 6; Athens' students, term hours divided by 6; CalPoly CLAD students, semester hours divided by 9.

IPEDS FTE (Full Time Equivalent) is a measurement equal to one student enrolled full time for one academic year. ULV's academic year includes Fall, Winter, Interterm, Spring, and Summer, and it calculates as "graduate credit hours are divided by 24 and undergraduate credit hours are divided by 30".

A third type of FTE, as defined by Common Data Set (CDS), is available online at <http://www.ulv.edu/cds/>. CDS reports only main campus undergraduate enrollment and calculates total FTE as the sum of total full-time students (usually 12 credits for undergraduate and 9 credit for graduate, or university specified credits for full-time students) plus 1/3 part-time students.

** Accurate census data were not available 2002 through 2005. The Athens Campus was closed after Summer 2004 and its students thereafter are classified under "Main Campus".

*** Bakersfield was formally under Main Campus Programs, but has been reported under Regional Campus Administration since this edition.

**** Correction: FTE for "special programs" and for doctoral psychology students in Main Campus Graduates were left out in the 5th edition and are now included in this edition.

Source: Institutional Research Annual Census on November 15.

**A-12: Graduate Student Full-Time Equivalent (FTE) by Major/Credential at All Campuses*
Fall 2004 - Fall 2008 and Academic Year 2004-05 through 2007-08**

Major	Fall 2004	Fall 2005	Fall 2006	Fall 2007	Fall 2008	IPEDS 2004-05	IPEDS 2005-06	IPEDS 2006-07	IPEDS 2007-08									
College of Arts & Sciences																		
Counseling (Concentration/Special Emph	17.8	0.7%	21.9	0.9%	19.6	0.7%	21.3	1.0%	22.0	0.7%	17.7	0.8%	17.0	0.6%	14.5	0.5%	19.5	1.0%
Counseling / Marriage & Family Therapy	56.3	2.3%	64.1	2.5%	64.3	2.3%	54.9	2.6%	61.1	1.8%	55.0	2.4%	53.5	2.0%	54.7	2.1%	49.5	2.5%
Student Designed Major	0.0	0.0%	0.0	0.0%	0.0	0.0%	0.0	0.0%	1.3	0.0%	0.0	0.0%	0.0	0.0%	0.0	0.0%	0.2	0.0%
	74.1	3.0%	86.0	3.3%	83.9	3.0%	76.2	3.7%	84.4	2.5%	72.7	3.1%	70.5	2.7%	69.2	2.6%	69.1	3.4%
College of Business & Public Management																		
Business Administration	535.8	21.4%	557.5	21.7%	606.7	21.5%	659.7	31.7%	743.9	22.4%	437.8	18.8%	518.1	19.7%	606.3	22.9%	630.8	31.4%
Business Information Technology	12.5	0.5%	4.5	0.2%	4.5	0.2%	5.5	0.3%	8.5	0.3%	6.5	0.3%	7.1	0.3%	5.4	0.2%	7.1	0.4%
Business Organizational Managemen	31.7	1.3%	22.2	0.9%	30.0	1.1%	22.5	1.1%	11.5	0.3%	22.3	1.0%	22.1	0.8%	25.5	1.0%	20.8	1.0%
Gerontology	25.7	1.0%	26.6	1.0%	21.5	0.8%	21.7	1.0%	23.6	0.7%	23.3	1.0%	22.2	0.8%	20.6	0.8%	20.1	1.0%
Health Services Administration/Managem	38.7	1.5%	31.0	1.2%	22.8	0.8%	30.5	1.5%	50.2	1.5%	24.3	1.0%	25.9	1.0%	25.0	0.9%	39.8	2.0%
Leadership & Management	62.0	2.5%	57.8	2.3%	59.5	2.1%	65.8	3.2%	123.5	3.7%	52.3	2.2%	53.0	2.0%	53.0	2.0%	81.0	4.0%
Public Administration	40.8	1.6%	49.5	1.9%	43.2	1.5%	47.8	2.3%	54.5	1.6%	36.3	1.6%	45.9	1.7%	41.8	1.6%	41.4	2.1%
Student Designed Major	0.0	0.0%	0.5	0.0%	0.0	0.0%	0.5	0.0%	0.0	0.0%	0.5	0.0%	0.1	0.0%	0.3	0.0%	0.5	0.0%
	747.2	29.9%	749.1	29.2%	788.2	28.0%	853.5	41.0%	1015.7	30.5%	602.8	25.9%	694.5	26.4%	777.8	29.3%	841.5	41.8%
College of Education & Organizational Leadership																		
Child Development	25.5	1.0%	55.2	2.1%	46.2	1.6%	15.4	0.7%	19.4	0.6%	27.0	1.2%	56.4	2.1%	33.6	1.3%	12.5	0.6%
Child Life	18.2	0.7%	27.9	1.1%	23.4	0.8%	44.0	2.1%	40.7	1.2%	13.5	0.6%	23.1	0.9%	22.3	0.8%	37.0	1.8%
Educational Management	145.3	5.8%	149.9	5.8%	119.5	4.2%	48.3	2.3%	47.7	1.4%	123.7	5.3%	135.8	5.2%	97.5	3.7%	51.5	2.6%
Multiple Subject (Credential)	217.4	8.7%	228.8	8.9%	214.9	7.6%	192.1	9.2%	180.8	5.4%	193.6	8.3%	205.1	7.8%	176.8	6.7%	164.8	8.2%
Preliminary Administrative Services (Cre	22.5	0.9%	24.2	0.9%	12.1	0.4%	6.6	0.3%	3.3	0.1%	20.0	0.9%	16.1	0.6%	12.9	0.5%	5.7	0.3%
Pupil Personnel Services (Credential	1.3	0.1%	2.9	0.1%	2.3	0.1%	4.4	0.2%	5.6	0.2%	2.5	0.1%	2.5	0.1%	3.5	0.1%	5.2	0.3%
Reading	46.3	1.9%	31.2	1.2%	31.8	1.1%	23.0	1.1%	21.5	0.6%	32.3	1.4%	34.3	1.3%	25.4	1.0%	16.9	0.8%
School/Educational Counseling	231.8	9.3%	271.7	10.6%	313.6	11.1%	403.6	19.4%	429.4	12.9%	228.1	9.8%	269.6	10.2%	338.2	12.8%	416.2	20.7%
Single Subject (Credential)	147.6	5.9%	144.6	5.6%	107.5	3.8%	109.1	5.2%	91.8	2.8%	126.1	5.4%	115.9	4.4%	95.0	3.6%	99.8	5.0%
Special Education	27.2	1.1%	27.0	1.1%	26.4	0.9%	26.2	1.3%	25.6	0.8%	29.0	1.2%	28.5	1.1%	27.7	1.0%	24.4	1.2%
Special Emphasis	371.2	14.8%	270.1	10.5%	285.6	10.1%	232.6	11.2%	209.3	6.3%	276.5	11.9%	260.3	9.9%	275.0	10.4%	211.4	10.5%
Special Emphasis: Advanced Teaching M	28.5	1.1%	47.8	1.9%	0.0	0.0%	0.0	0.0%	0.0	0.0%	38.3	1.6%	23.0	0.9%	0.0	0.0%	0.0	0.0%
Student Designed Majors	0.0	0.0%	0.0	0.0%	0.0	0.0%	1.0	0.0%	0.0	0.0%	0.0	0.0%	0.0	0.0%	0.4	0.0%	0.9	0.0%
	1282.8	51.3%	1281.3	49.9%	1183.3	42.0%	1106.3	53.1%	1075.0	32.3%	#####	47.8%	#####	44.5%	1108.2	41.8%	1046.1	52.1%
Major not Declared**	398.0	15.9%	452.3	17.6%	763.7	27.1%	47.1	2.3%	1151.9	34.6%	539.3	23.2%	697.4	26.5%	697.4	26.3%	53.0	2.6%
Total Graduate Students	2502.1	100.0%	2568.7	100.0%	2819.1	100.0%	2083.2	100.0%	3327.1	100.0%	#####	100.0%	#####	100.0%	2652.5	100.0%	2009.8	100.0%

**A- 13: Doctoral Student FTE by Major/Credential at All Campuses*
Fall 2004 - Fall 2008 and Academic Year 2004-05 through 2007-08**

Major	Fall 2004	Fall 2005	Fall 2006	Fall 2007	Fall 2007	IPEDS 2004-05	IPEDS 2005-06	IPEDS 2006-07	IPEDS 2007-08									
Clinical-Community Psychology (Psy	61.6	15.5%	66.2	19.4%	70.6	21.1%	73.9	25.8%	94.2	30.0%	58.4	20.3%	60.3	24.1%	61.1	25.1%	68.5	31.6%
Educational/Org. Leadership/Managemen	236.2	59.4%	202.9	59.4%	198.7	59.4%	159.0	55.5%	154.9	49.3%	155.4	54.0%	138.8	55.4%	140.1	57.5%	110.1	50.7%
Professional Administrative Services (Cr	0.8	0.2%	1.0	0.3%	1.1	0.3%	0.6	0.2%	1.4	0.4%	8.2	2.9%	0.8	0.3%	1.0	0.4%	0.4	0.2%
Public Administration (DPA)	67.3	16.9%	60.8	17.8%	63.1	18.9%	52.9	18.5%	62.4	19.9%	46.0	16.0%	43.5	17.3%	40.8	16.7%	37.9	17.5%
	365.9	92.0%	331.0	96.9%	333.5	99.7%	286.4	100.0%	312.9	99.5%	268.0	93.2%	243.3	97.1%	243.1	99.7%	217.0	100.0%
Major not Declared	31.7	8.0%	10.7	3.1%	1.0	0.3%	0.0	0.0%	1.5	0.5%	19.6	6.8%	7.4	2.9%	0.8	0.3%	0.0	0.0%
Total Doctoral Majors	397.6	100.0%	341.7	100.0%	334.5	100.0%	286.4	100.0%	314.4	100.0%	287.6	100.0%	250.7	100.0%	243.8	100.0%	217.0	100.0%

**A- 14: First Professional Student FTE by Major at All Campuses*
Fall 2004 - Fall 2008 and Academic Year 2004-05 through 2007-08**

Major	Fall 2004	Fall 2005	Fall 2006	Fall 2007	Fall 2007	IPEDS 2004-05	IPEDS 2005-06	IPEDS 2006-07	IPEDS 2007-08									
Juris Doctor (JD)	306.2	100.0%	364.0	100.0%	371.8	100.0%	434.8	100.0%	493.2	100.0%	242.5	100.0%	371.8	100.0%	308.5	100.0%	348.1	100.0%
Total First Professional Majors	306.2	100.0%	364.0	100.0%	371.8	100.0%	434.8	100.0%	493.2	100.0%	242.5	100.0%	371.8	100.0%	308.5	100.0%	348.1	100.0%

* For explanation of FTE, see page 8.

** The 2007 data does not include non-degree professional development students.

Source: Institutional Research Annual Census on November 15.

**A-15: Change in FTE by Campus/Program and by College*
Fall 2004 - Fall 2008**

By Campus/Program**	Fall 2004		Fall 2005		Fall 2006		Fall 2007		Fall 2008	
Main Campus Undergraduate	1,603.5	24.0%	1,697.7	25.0%	1,635.7	24.0%	1,636.5	23.6%	1,504.6	20.6%
Main Campus Graduate***	1,917.5	28.7%	1,842.1	27.2%	1,843.8	27.1%	1,910.9	27.6%	2,088.1	28.6%
CAPA	518.5	7.8%	505.2	7.4%	442.3	6.5%	411.1	5.9%	408.2	5.6%
Regional Campus Programs	2,234.7	33.5%	2,264.4	33.4%	2,116.3	31.1%	2,027.0	29.3%	2,149.1	29.4%
Others****	397.4	6.0%	473.9	7.0%	768.5	11.3%	935.0	13.5%	1,162.4	15.9%
	6,671.6	100.0%	6,783.4	100.0%	6,806.5	100.0%	6,920.6	100.0%	7,312.3	100.0%

By College*****	Fall 2004		Fall 2005		Fall 2006		Fall 2007		Fall 2008	
College of Arts & Sciences	1,452.3	21.8%	1,470.7	21.7%	1,485.3	21.8%	1,439.6	20.8%	1,391.8	19.0%
College of Business & Public Management	2,068.1	31.0%	2,027.0	29.9%	1,998.0	29.4%	2,054.9	29.7%	2,312.8	31.6%
College of Education & Org. Leadership	2,169.6	32.5%	2,243.7	33.1%	2,070.5	30.4%	1,917.2	27.7%	1,853.6	25.3%
College of Law	306.2	4.6%	364.0	5.4%	371.8	5.5%	434.8	6.3%	493.2	6.7%
Major not designed*****	674.8	10.1%	677.9	10.0%	880.8	12.9%	1,074.2	15.5%	1,260.9	17.2%
	6,671.0	100.0%	6,783.3	100.0%	6,806.5	100.0%	6,920.6	100.0%	7,312.3	100.0%

* For explanation of FTE, see page 8.

** The numbers of this table are calculated from the report of page 8.

*** This category includes Main Campus Graduates, Law, EdD, DPA, and PASC.

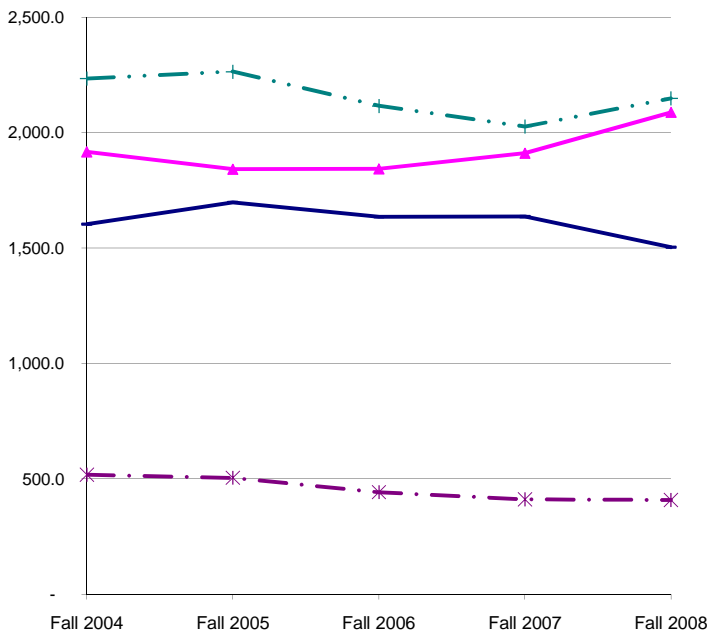
**** This category includes Other Programs, Special Programs (Professional Development), Overseas Programs, and Campus-Not-Designed of page 8.

***** The numbers on this table are based on the reports of page 9 and page 10.

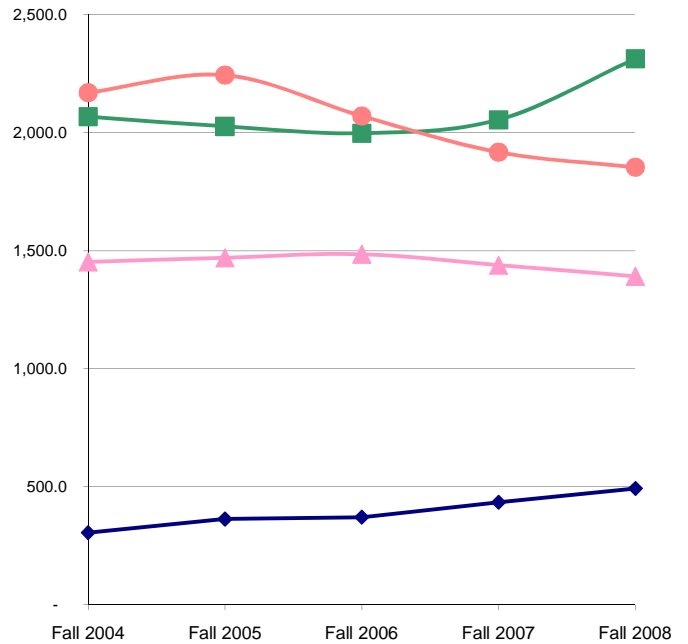
***** Fall 2007 number includes non-degree professional degree students.

Source: Institutional Research Annual Census on November 15.

**Change in FTE by Campus/Program
Fall 2004 - Fall 2008**



**Change in FTE by College
Fall 2004 - Fall 2008**



— Main Campus Undergraduate
 — Main Campus Graduate***
 - - - CAPA
 ···· Regional Campus Programs

····· College of Arts & Sciences
 — College of Business & Public Management
 — College of Education & Org. Leadership
 — College of Law

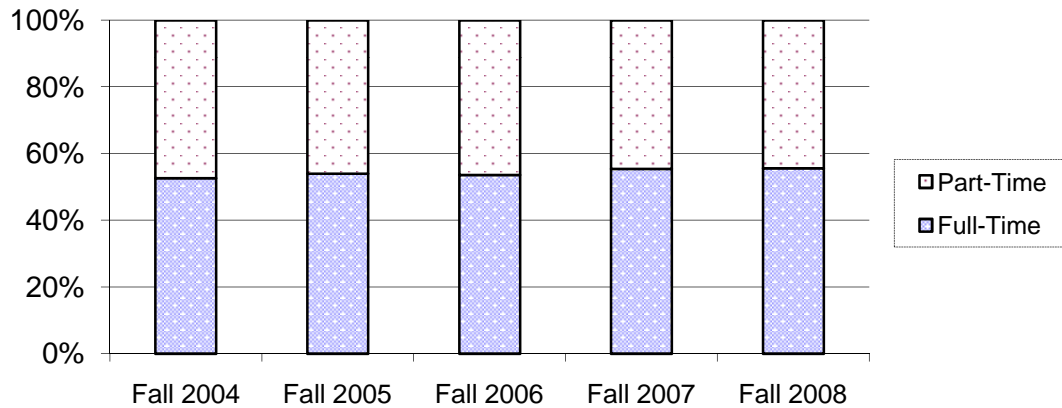
**A-16: Classification and Enrollment Status of All Students
Fall 2004 - Fall 2008**

Student Level	Fall 2004		Fall 2005		Fall 2006		Fall 2007		Fall 2008	
Freshman	942	11.3%	790	9.5%	693	8.3%	732	9.9%	723	9.6%
Sophomore	670	8.1%	690	8.3%	616	7.4%	603	8.2%	586	7.8%
Junior	1123	13.5%	1098	13.2%	1073	12.9%	999	13.6%	939	12.5%
Senior	1623	19.5%	1789	21.5%	1717	20.6%	1662	22.5%	1674	22.2%
Graduate (Masters Level)	3165	38.0%	3184	38.3%	3455	41.5%	2612	35.4%	2789	37.0%
Doctoral	577	6.9%	518	6.2%	511	6.1%	457	6.2%	470	6.2%
First Professional	221	2.7%	255	3.1%	263	3.2%	306	4.2%	349	4.6%
Total	8321	100%	8324	100%	8328	100%	7371	100%	7530	100%

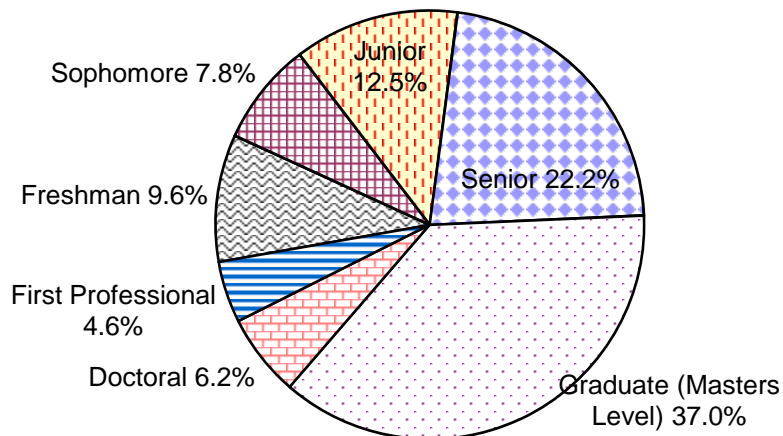
Enrollment Status	Fall 2004		Fall 2005		Fall 2006		Fall 2007		Fall 2008	
Full-Time	4385	52.7%	4492	54.0%	4465	53.6%	4087	55.4%	4189	55.6%
Part-Time	3940	47.3%	3832	46.0%	3863	46.4%	3284	44.6%	3341	44.4%
Total	8325	100%	8324	100%	8328	100%	7371	100%	7530	100%

Source: Institutional Research Annual Census on November 15. Non-degree professional development students are not included since Fall 2007.

**Enrollment Status of ULV Students
Fall 2004-Fall 2008**



[Level of ULV Students - Fall 2008]



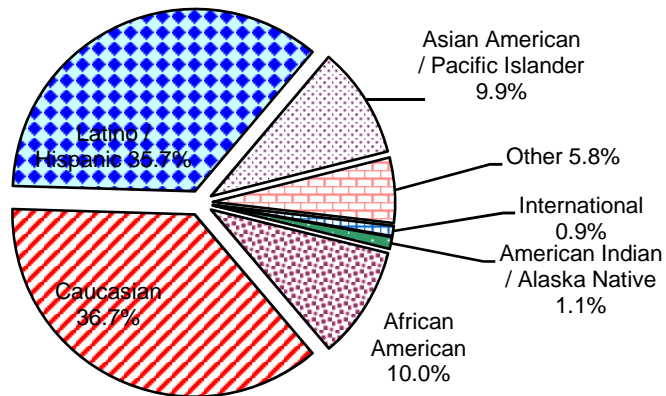
**A-17: Ethnicity and Gender of All Students
Fall 2004 - Fall 2008**

Ethnicity	Fall 2004		Fall 2005		Fall 2006		Fall 2007		Fall 2008	
American Indian / Alaska Native	80	1.1%	77	1.0%	64	0.9%	67	1.0%	70	1.1%
African American	834	11.5%	789	10.5%	740	10.9%	658	10.0%	660	10.0%
Caucasian	3139	43.4%	2975	39.4%	2721	40.0%	2512	38.1%	2428	36.7%
Latino / Hispanic	2318	32.0%	2399	31.8%	2290	33.6%	2313	35.1%	2364	35.7%
Asian American / Pacific Islander	402	5.6%	409	5.4%	436	6.4%	557	8.5%	655	9.9%
Other	291	4.0%	690	9.1%	338	5.0%	346	5.3%	383	5.8%
International	169	2.3%	204	2.7%	217	3.2%	134	2.0%	62	0.9%
Total	7233	100%	7543	100%	6806	100%	6587	100%	6622	100%

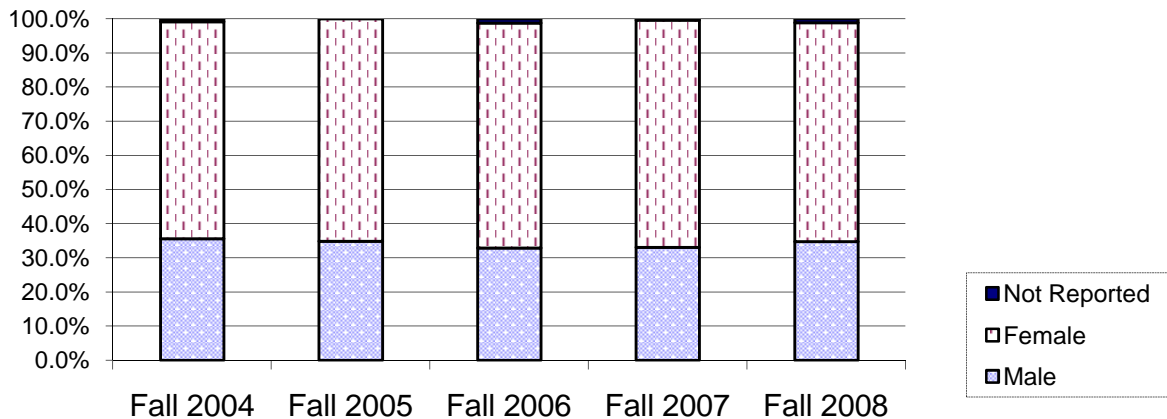
Gender	Fall 2004		Fall 2005		Fall 2006		Fall 2007		Fall 2008	
Male	2725	35.6%	2904	34.9%	2739	32.9%	2756	33.1%	2619	34.8%
Female	4857	63.5%	5421	65.1%	5487	65.9%	5538	66.5%	4825	64.1%
Not Reported	64	0.8%	0	0.0%	98	1.2%	34	0.4%	86	1.1%
Total	7646	100%	8325	100%	8324	100%	8328	100%	7530	100%

Source: Institutional Research Annual Census on November 15. Non-degree professional development students are not included since Fall 2007.

Ethnicity of All Students - Fall 2008



**Gender of All ULV Students
Fall 2004- Fall 2008**



A-18: Student Age by Campus/Program and Class - Fall 2008

Main Campus Programs	Average	Under 20	Age 20 - 24	Age 25- 29	Age 30-39	40 or Over
Main Campus Undergraduate	22.6	529 98.7%	944 54.9%	65 3.3%	6 0.3%	6 0.3%
Main Campus Graduate	32.3	1 0.0%	327 19.0%	640 32.6%	396 17.0%	287 12.5%
Bakersfield Credential	33.8	0 0.0%	9 0.5%	38 1.9%	23 1.0%	25 1.1%
DPA	38.8	0 0.0%	0 0.0%	8 0.4%	29 1.2%	58 2.5%
EdD	39.5	0 0.0%	0 0.0%	7 0.4%	72 3.1%	206 9.0%
PASC	40.0	0 0.0%	0 0.0%	0 0.0%	0 0.0%	1 0.0%
Law*	30.3	0 0.0%	91 5.3%	169 8.6%	68 2.9%	21 0.9%
	29.1	530 98.7%	1371 79.7%	927 47.2%	594 25.5%	604 26.3%

Regional Campus Administration (RCA)

CAPA	36.2	0 0.0%	23 1.3%	178 9.1%	245 10.5%	227 9.9%
Education**	35.7	0 0.0%	38 2.2%	112 5.7%	173 7.4%	143 6.2%
ULV Online	36.9	0 0.0%	17 1.0%	43 2.2%	109 4.7%	106 4.6%
Teacher Credential (RCA Ed.)	34.0	0 0.0%	19 1.1%	50 2.5%	48 2.1%	33 1.4%
	35.9	0 0.0%	97 5.6%	383 19.5%	575 24.7%	509 22.2%

Professional Development Centers

Central Coast	31.9	0 0.0%	36 2.1%	26 1.3%	24 1.0%	23 1.0%
High Desert Victorville	34.9	1 0.2%	11 0.6%	31 1.6%	38 1.6%	32 1.4%
Inland Empire	36.9	0 0.0%	19 1.1%	49 2.5%	118 5.1%	125 5.4%
Kern County/Bakersfield	34.1	0 0.0%	30 1.7%	49 2.5%	58 2.5%	45 2.0%
Orange County	37.1	0 0.0%	11 0.6%	54 2.7%	104 4.5%	137 6.0%
San Fernando Valley	37.0	0 0.0%	12 0.7%	65 3.3%	123 5.3%	146 6.4%
Ventura County	35.3	0 0.0%	18 1.0%	27 1.4%	42 1.8%	46 2.0%
	36.0	0 0.2%	137 7.3%	301 15.3%	507 21.8%	554 24.1%

Residence Centers

Point Mugu	32.6	2 0.4%	76 4.4%	86 4.4%	105 4.5%	44 1.9%
Vandenberg	34.6	0 0.0%	10 0.6%	20 1.0%	22 0.9%	22 1.0%
	33.0	2 0.4%	86 5.0%	106 5.4%	127 5.5%	66 2.9%

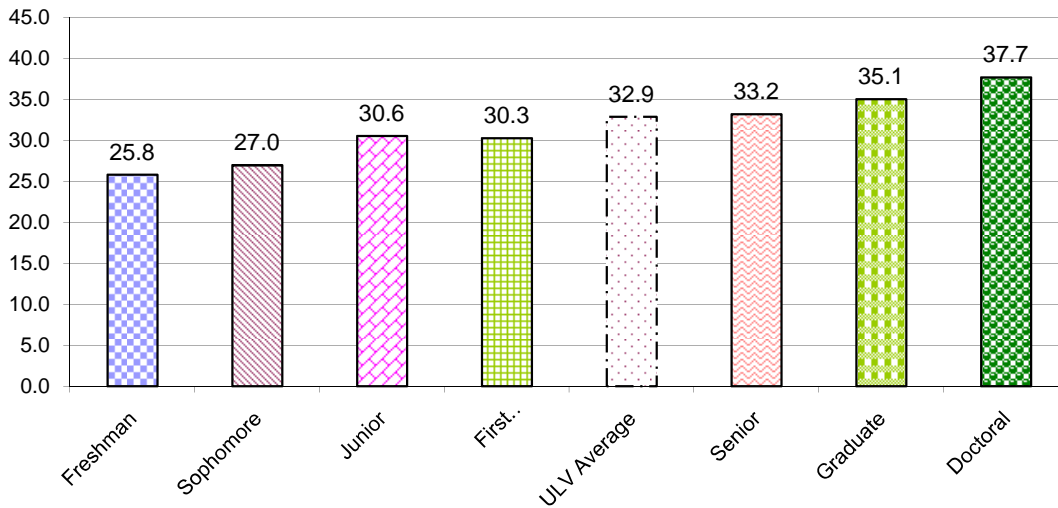
Other and Special Programs

Ecumenical Centers (ABTC/ECBCS)	36.8	1 0.2%	3 0.2%	2 0.1%	4 0.2%	20 0.9%
EPIC	23.5	3 0.6%	15 0.9%	1 0.1%	0 0.0%	0 0.0%
	31.7	4 0.7%	18 1.0%	3 0.2%	4 0.2%	20 0.9%

Professional Development/Travel Learning	37.4	0 0.0%	12 0.7%	244 12.4%	521 22.4%	542 23.6%
Enrollment Grand Total	32.9	536 100.0%	1721 99.4%	1964 100.0%	2328 100.0%	2295 100.0%

Source: Institutional Research Annual Census on November 15.

Student Average Age by Class



A-19: International Student Profile: Fall 2004 - Fall 2008

By Gender	2004		2005		2006		2007		2008	
	Count	% Count	Count	% Count	Count	% Count	Count	% Count	Count	% Count
Male	91	53.2%	103	48.1%	123	47.7%	136	45.5%	198	54.4%
Female	80	46.8%	111	51.9%	135	52.3%	163	54.5%	166	45.6%
Grand Total	171	100.0%	214	100.0%	258	100.0%	299	100.0%	364	100.0%

By Student Level

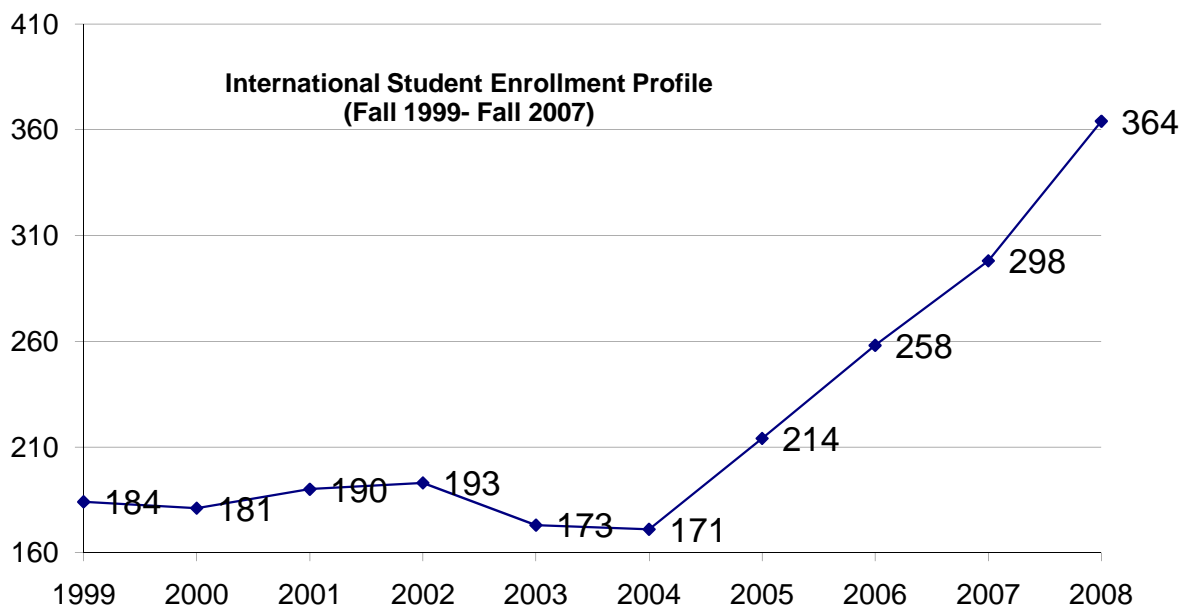
Undergraduate	12	7.0%	48	22.4%	30	11.6%	29	9.7%	43	11.8%
Masters	143	83.6%	144	67.3%	212	82.2%	257	86.2%	305	83.8%
Doctoral and Juris Doctor	16	9.4%	22	10.3%	16	6.2%	12	4.0%	16	4.4%
Grand Total	171	100.0%	214	100.0%	258	100.0%	298	100.0%	364	100.0%

By Leading Majors

Business Administration(MBA)	131	76.6%	147	68.7%	200	77.5%	227	76.2%	262	72.0%
Juris Doctor	10	5.8%	12	5.6%	8	3.1%	5	1.7%	6	1.6%
Public Administration (DPA)	6	3.5%	10	4.7%	8	3.1%	5	1.7%	9	2.5%
Other Majors	24	14.0%	45	21.0%	42	16.3%	61	20.5%	87	23.9%
Grand Total	171	100.0%	214	100.0%	258	100.0%	298	100.0%	364	100.0%

By Countries with Largest Representation

Taiwan	56	32.4%	71	41.5%	126	51.0%	163	54.7%	178	48.9%
Thailand	53	30.6%	43	25.1%	59	23.9%	57	19.1%	49	13.5%
Saudi Arabia	0	0.0%	1	0.6%	0	0.0%	2	0.7%	30	8.2%
China	13	7.6%	8	3.7%	9	3.5%	12	3.5%	27	7.4%
Japan	11	6.4%	12	7.0%	10	4.0%	6	2.0%	10	2.7%
India	3	1.7%	3	1.8%	0	0.0%	5	1.7%	9	2.5%
Canada	7	4.0%	9	5.3%	6	2.4%	10	3.4%	8	2.2%
Other	30	17.3%	51	29.8%	37	15.0%	43	14.4%	53	14.6%
Grand Total	173	100.1%	171	114.8%	247	99.8%	298	99.5%	364	100.0%



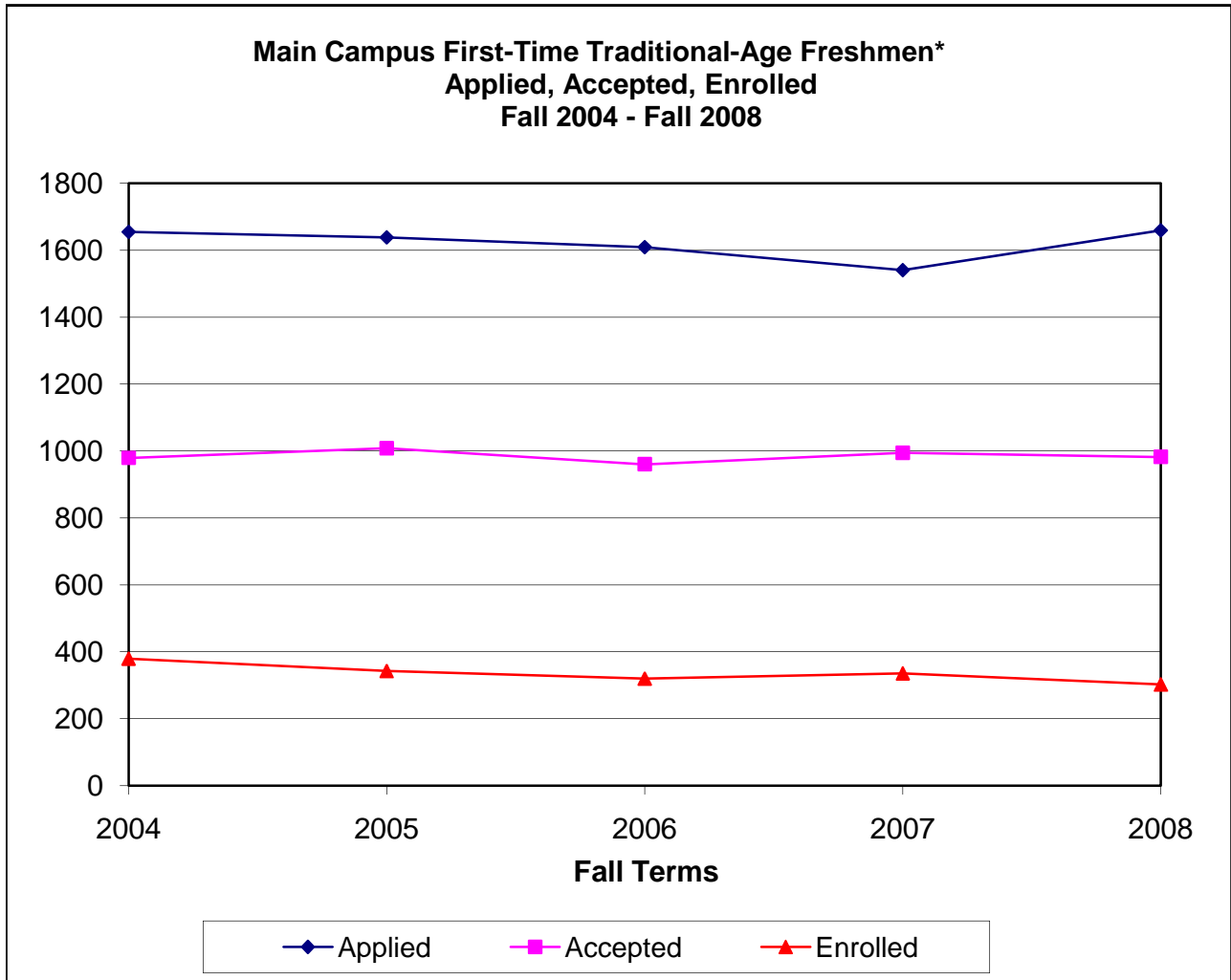
Source: International and Study Abroad Center.

B.
ADMISSIONS
&
NEW
STUDENTS

All statistics are based on data from La Verne's census on November 15 for each year specified, unless otherwise noted.

B-1: Admission Statistics for Main Campus First-Time Traditional-Age Freshmen*

Application, Acceptance, and Enrollment Statistics Fall 2003 - Fall 2007



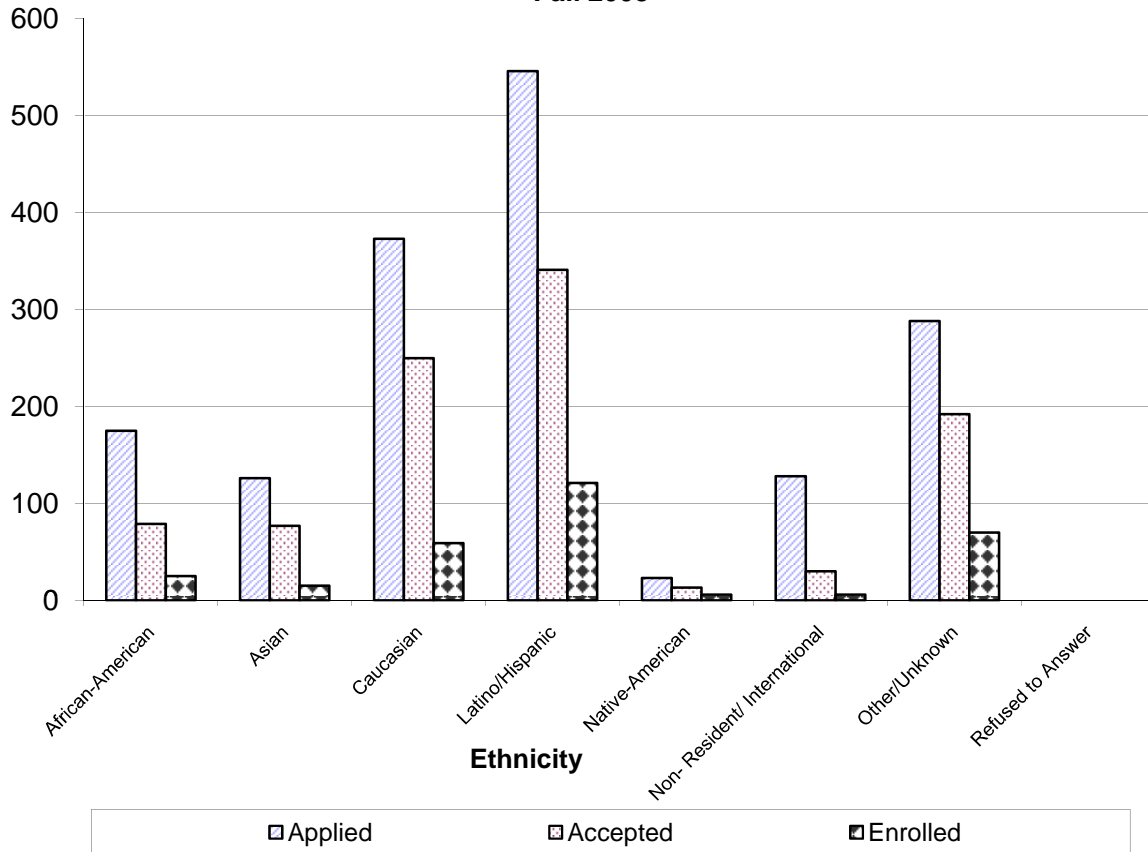
Fall	Applied	Accepted	Acceptance Rate	Enrolled	Yield Rate
2004	1654	979	59%	379	39%
2005	1638	1008	62%	342	34%
2006	1609	960	60%	319	33%
2007	1540	994	65%	335	34%
2008	1659	982	59%	302	31%

* Does not include Advanced Freshmen, who have taken less than 32 college credits after graduating from high school.

Source: Institutional Research Admission Census on October 15, except the "enrolled" for 2006 and after, which are from Institutional Research Census on November 15 of each year.

B-2: Application, Acceptance, and Enrollment Statistics by Ethnicity of Main Campus First Time Traditional-Age Freshmen

**Main Campus First-Time Traditional-Age Freshmen*
Applied, Accepted, Enrolled
Fall 2008**



Ethnicity	Yield Rate Fall 2002- Fall 2007						Fall 2008				
	2002	2003	2004	2005	2006	2007	Applied	Accepted	Enrolled	Acceptance Rate	Yield Rate
African-American	28%	32%	33%	32%	28%	29%	175	79	25	45%	32%
Asian	22%	20%	17%	20%	20%	21%	126	77	15	61%	19%
Caucasian	39%	39%	40%	32%	55%	35%	373	250	59	67%	24%
Latino/Hispanic	44%	43%	44%	40%	40%	35%	546	341	121	62%	35%
Native-American	100%	50%	75%	0%	0%	0%	23	13	6	57%	46%
Non-Resident/ International	-	-	0	10%	25%	22%	128	30	6	23%	20%
Other/Unknown	45%	30%	41%	38%	26%	28%	288	192	70	67%	36%
Refused to Answer	-	-	33%	29%	50%	40%	0	0	0	-	-

Source: Institutional Research Admission Census on October 15, except the "enrolled" for 2006 and after, which are from Institutional Research Census on November 15 of each year.

**B-3: New Main Campus Traditional-Age Students by Gender
Fall 2004 - Fall 2008**

New First-Time Freshmen

Gender	Fall 2004		Fall 2005		Fall 2006		Fall 2007		Fall 2008	
Male	123	30.5%	106	30.1%	111	34.8%	116	34.5%	133	44.0%
Female	280	69.5%	246	69.9%	208	65.2%	220	65.5%	169	56.0%
Total	403	100.0%	352	100.0%	319	100.0%	336	100.0%	302	100.0%

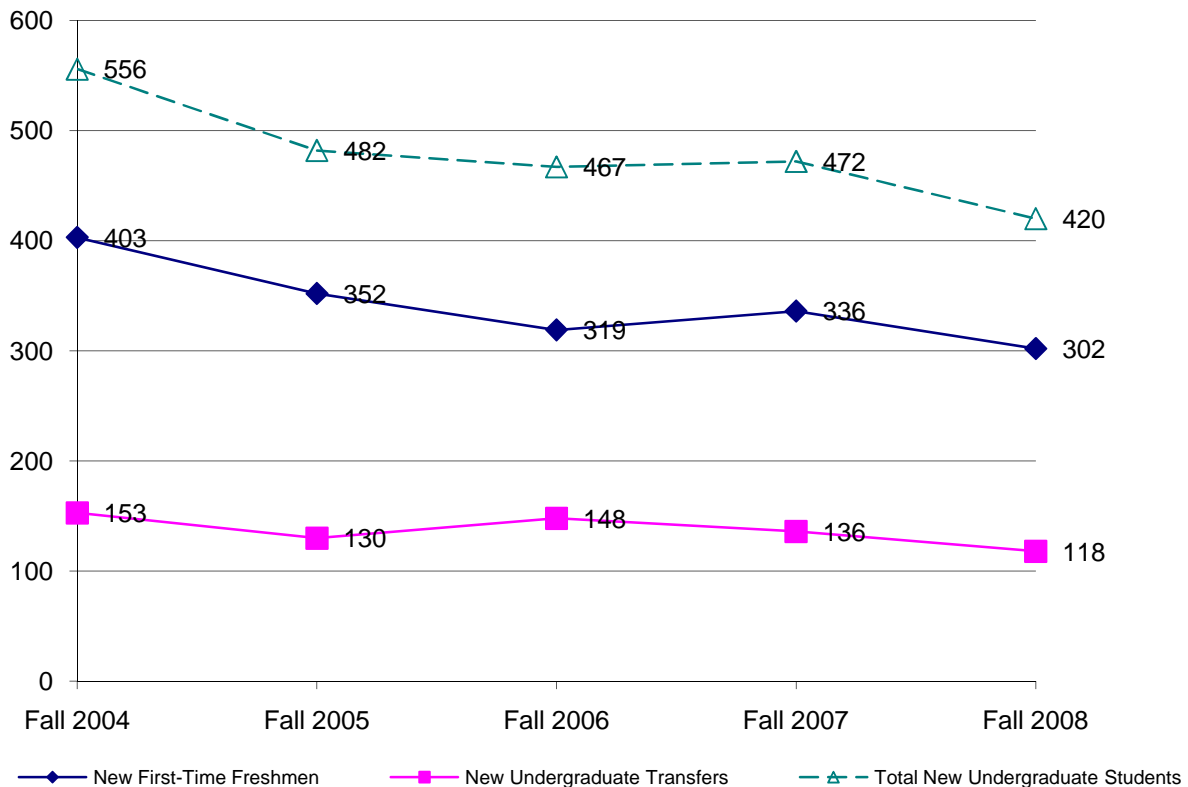
New Undergraduate Transfers

Male	80	52.3%	56	43.1%	74	50.0%	62	45.6%	54	45.8%
Female	73	47.7%	74	56.9%	74	50.0%	74	54.4%	64	54.2%
Total	153	100.0%	130	100.0%	148	100.0%	136	100.0%	118	100.0%

Total New Undergraduate Students

Male	203	36.5%	162	33.6%	185	39.6%	178	37.7%	187	44.5%
Female	353	63.5%	320	66.4%	282	60.4%	294	62.3%	233	55.5%
Total New Students	556	100%	482	100%	467	100%	472	100%	420	100%

New Main Campus Undergraduate Enrollment (Fall 2004 - Fall 2008)



Source: Fall 2002-Fall 2005, Institutional Research Admission Census on October 15; Fall 2006 and after, Institutional Research Annual Census on November 15 of each year.

**B-4: Main Campus New Traditional-Age Students by Ethnicity
Fall 2004 - Fall 2008**

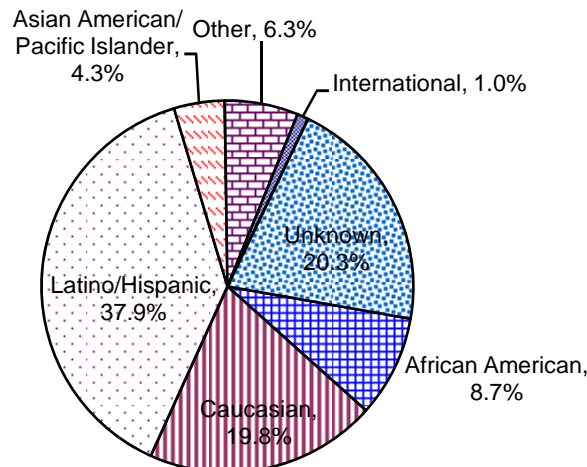
New Traditional-Age Freshmen

Ethnicity	Fall 2004		Fall 2005		Fall 2006		Fall 2007		Fall 2008	
	Count	%	Count	%	Count	%	Count	%	Count	%
American Indian/ Alaskan Native	3	0.7%	0	0.0%	0	0.0%	4	1.2%	6	2.0%
African American	33	8.2%	33	9.4%	23	7.2%	18	5.4%	25	8.3%
Caucasian	145	36.0%	107	30.4%	98	30.7%	97	28.9%	59	19.5%
Latino/Hispanic	156	38.7%	135	38.4%	138	43.3%	152	45.2%	121	40.1%
Asian American/ Pacific Islander	13	3.2%	18	5.1%	16	5.0%	11	3.3%	15	5.0%
Other	26	6.5%	25	7.1%	16	5.0%	21	6.3%	18	6.0%
International	0	0.0%	0	0.0%	4	1.3%	2	0.6%	6	2.0%
Unknown	27	6.7%	34	9.7%	24	7.5%	31	9.2%	52	17.2%
Total	403	100%	352	100%	319	100%	336	100%	302	100%

New Traditional-Age Transfers

Ethnicity	Fall 2004		Fall 2005		Fall 2006		Fall 2007		Fall 2008	
	Count	%	Count	%	Count	%	Count	%	Count	%
American Indian/ Alaskan Native	0	0.0%	1	0.8%	0	0.0%	0	0.0%	1	0.8%
African American	20	13.1%	17	13.1%	18	12.2%	10	7.4%	11	9.3%
Caucasian	57	37.3%	43	33.1%	60	40.5%	49	36.0%	23	19.5%
Latino/Hispanic	47	30.7%	45	34.6%	36	24.3%	47	34.6%	36	30.5%
Asian American/ Pacific Islander	4	2.6%	5	3.8%	8	5.4%	5	3.7%	3	2.5%
Other	8	5.2%	2	1.5%	3	2.0%	5	3.7%	8	6.8%
International	7	4.6%	9	6.9%	2	1.4%	7	5.1%	4	3.4%
Unknown/Refuse to Answer	10	6.5%	8	6.2%	21	14.2%	13	9.6%	32	27.1%
Total	153	100%	130	100%	148	100%	136	100%	118	100%

Ethnicity of New Traditional-Age Freshmen and New Traditional- Age

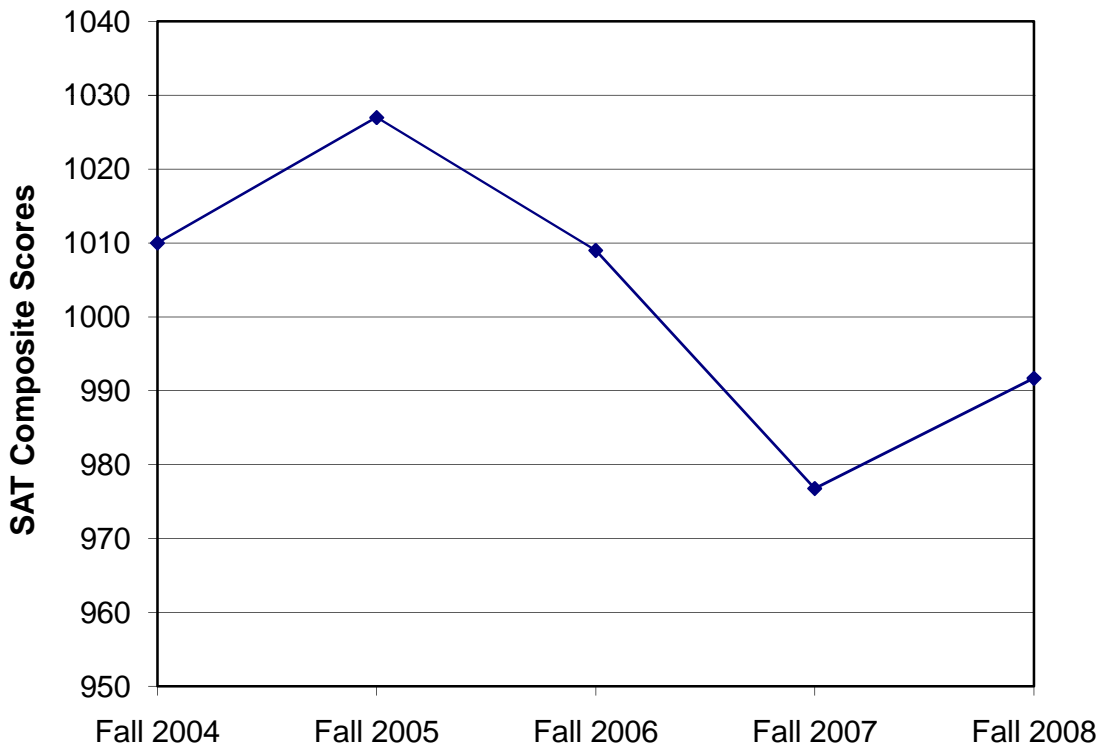


Source: Fall 2002-Fall 2005, Institutional Research Admission Census on October 15; Fall 2006 and after, Institutional Research Annual Census on November 15 of each year.

**B-5: New Main Campus Traditional-Age Freshman SAT Scores
Fall 2004 - Fall 2008**

Test Scores	Fall 2004		Fall 2005		Fall 2006		Fall 2007		Fall 2008	
	Mean	Median	Mean	Median	Mean	Median	Mean	Median	Mean	Median
SAT Math	500	510	515	510	505	500	518	480	502	500
SAT Verbal	500	502	512	510	505	500	486	480	489	490
SAT Composite	1010	1013	1027	1020	1009	1000	977	980	992	990

**Mean SAT Composite Scores
for New Main Campus Traditional-Age Freshmen
Fall 2004 - Fall 2008**



Source: Fall 2002-Fall 2005, Institutional Research Admission Census on October 15; Fall 2006 and after, Institutional Research Annual Census on November 15 and Institutional Research Admission Census on October 15.

**B-6: New Main Campus Undergraduate Students by Entrance GPA
Fall 2004 - Fall 2008**

New Main Campus Traditional-Age Freshmen

GPA Range	Fall 2004	Fall 2005	Fall 2006	Fall 2007	Fall 2008
3.50 - 4.00+	188	171	146	117	117
3.00 - 3.49	162	119	112	144	94
2.50 - 2.99	51	55	56	63	64
2.00 - 2.49	1	3	2	9	11
Below 2.00	0	0	0	1	0
GPA not reported	0	4	3	2	16
	402	352	319	336	302
Mean Freshmen GPA	3.48	3.46	3.45	3.35	3.35

New Main Campus Traditional-Age Transfers

GPA Range	Fall 2004	Fall 2005	Fall 2006	Fall 2007	Fall 2008
3.50 - 4.00+	11	14	19	19	16
3.00 - 3.49	34	43	41	40	38
2.50 - 2.99	43	51	67	41	42
2.00 - 2.49	9	11	18	22	8
Below 2.00	0	0	0	0	0
GPA not reported	12	11	3	14	14
	109	130	148	136	118
Mean Transfer GPA	3	2.99	2.97	2.97	3.04

Source: Fall 2002-Fall 2005, Institutional Research Admission Census on October 15; Fall 2006 and after, Institutional Research Annual Census on November 15 and Institutional Research Admission Census on October 15.

**B-7: Top 15 High School Origins of New Main Campus First-Time Traditional-Age Freshmen
Fall 2004 - Fall 2008**

High School Origin	Fall 2004	Fall 2005	Fall 2006	Fall 2007*	Fall 2008
Bonita High School	17	8	14	15	10
Bishop Amat Memorial High Sch	4	8	7	7	9
Damien High School	4	3	13	7	9
Alta Loma High School	1	7	4	9	8
Claremont High School	5	5	5	10	7
Colony High School					6
Charter Oak High School	7	2	8	6	6
Upland High School	13	12	10	5	6
Diamond Ranch High School	2	3	6	3	6
Rancho Cucamonga High School	5	2	4	4	6
Coachella Valley High School	6		1	1	6
South Hills High School	5	7	7	6	6
Saint Lucys Priory School	4	3	5	11	5
Glendora High School	8	8	6	11	5
Chaffey High School	7	5	12	5	5
Covina High School	3	8	4	5	5
Other Schools	212	322	246	214	197
Gand Total	303	403	352	319	302

**B-8: Top 15 College/University Origins of New Main Campus Traditional-Age Undergraduate Transfers
Fall 2004 - Fall 2008**

College/University	Fall 2004	Fall 2005	Fall 2006	Fall 2007	Fall 2008
Citrus College	9	14	9	15	19
Mount San Antonio College	21	22	10	10	17
Chaffey Community College	4	6	5	10	17
Riverside Community College	4	5	4	2	3
Azusa Pacific University	2	4	2	7	3
Pasadena City College	6	9	6	6	3
Orange Coast College	1	1	3	3	2
Fullerton College	2	4	3	2	2
Rio Hondo College	6	3	6	5	2
CSU, Los Angeles					2
Fresno City College					2
San Joaquin Valley College			3		2
New Mexico Military Institute					1
Everest College	5		2	1	1
College of the Desert					1
Other Colleges/Universities	49	85	77	87	41
Gand Total	109	153	130	148	118

Source: Fall 2002-Fall 2005, Institutional Research Admission Census on October 15; Fall 2006 and after, Institutional Research Annual Census on November 15.

**B-9: New Main Campus Traditional-Age Students by Geographic Region
Fall 2004 - Fall 2008**

U.S. State	Fall 2004	Fall 2005	Fall 2006	Fall 2007	Fall 2008
Arizona	3	3	4	0	2
California	513	451	429	444	396
Colorado	1	0	2	1	0
Connecticut	1	0	0	0	1
Florida	0	1	1	1	0
Guam	0	0	0	0	1
Hawaii	5	3	8	1	2
Idaho	1	0	0	0	0
Illinois	1	0	1	0	0
Indiana	0	0	1	0	0
Kansas	0	0	0	0	0
Kentucky	0	0	0	0	0
Massachusetts	1	0	0	1	0
Maryland	0	0	1	0	0
Minnesota	0	0	0	0	1
Missouri	1	0	0	0	1
Nevada	1	2	0	2	3
New Hampshire	2	0	0	0	0
New Jersey	1	0	0	1	0
New Mexico	1	0	0	0	0
New York	1	2	1	1	0
North Carolina	0	0	0	0	1
Ohio	1	0	1	0	2
Oklahoma	0	0	0	0	1
Oregon	3	0	4	5	1
Pennsylvania	2	0	0	2	0
Texas	1	0	0	0	2
Utah	0	0	1	2	0
Virginia	1	1	0	1	0
Washington	8	8	5	2	3
Wyoming	0	0	0	0	1
Unknown U.S. State	0	2	8	8	2
Total U.S. Residents	549	473	467	472	420

Source: Fall 2002-Fall 2005, Institutional Research Admission Census on October 15; Fall 2006 and after, Institutional Research Annual Census on November 15 and Institutional Research Admission Census on October 15.

**B-10: Main Campus New Traditional-Age International Students by Geographic Region
Fall 2004 - Fall 2008**

Foreign Country	Fall 2004	Fall 2005	Fall 2006	Fall 2007	Fall 2008
Canada	0	0	1	0	0
China	0	0	1	1	2
Ecuador	2	1	0	0	0
France	1	2	0	0	0
Germany	0	0	0	0	0
Indonesia	0	0	0	0	0
Japan	1	2	1	0	0
Lebanon	0	0	0	0	0
Mexico	0	1	0	0	0
Philippines	0	0	1	0	0
Saudi Arabia	0	0	0	0	11
Spain	1	1	0	0	0
Taiwan	0	0	2	0	1
Thai	0	0	0	0	1
Turkey	0	0	0	1	0
United Kingdom	2	2	0	0	0
Ukraine	0	0	0	1	0
Vietnam	0	0	0	0	1
Unknown Foreign Country	0	0	0	0	0
Total Foreign Students	7	9	6	3	16

Source: International and Study Abroad Center.

**B-11: New Main Campus Traditional-Age Freshmen by Major
Fall 2004 - Fall 2008**

College Major	Fall 2004 Count	Fall 2004 %	Fall 2005 Count	Fall 2005 %	Fall 2006 Count	Fall 2006 %	Fall 2007 Count	Fall 2007 %	Fall 2008 Count	Fall 2008 %
Arts & Sciences										
Anthropology	1	0.2%	2	0.6%	3	0.9%	0	0.0%	2	0.7%
Art/Art History	2	0.5%	3	0.9%	3	0.9%	3	0.9%	2	0.7%
Athletic Training	15	3.7%	11	3.1%	12	3.8%	12	3.6%	14	4.6%
Behavioral Science	2	0.5%	1	0.3%	0	0.0%	2	0.6%	1	0.3%
Biology	23	5.7%	24	6.8%	26	8.2%	29	8.6%	20	6.6%
Broadcasting	9	2.2%	7	2.0%	7	2.2%	6	1.8%	3	1.0%
Chemistry	3	0.7%	5	1.4%	8	2.5%	2	0.6%	4	1.3%
Communications	13	3.2%	18	5.1%	19	6.0%	15	4.5%	11	3.6%
Comparative Literature	0	0.0%	1	0.3%	0	0.0%	0	0.0%	0	0.0%
Computer Science & Engineering	8	2.0%	5	1.4%	9	2.8%	4	1.2%	11	3.6%
Criminology	22	5.5%	20	5.7%	20	6.3%	11	3.3%	17	5.6%
English	17	4.2%	5	1.4%	6	1.9%	9	2.7%	4	1.3%
Environmental Biology/Management	1	0.2%	0	0.0%	1	0.3%	0	0.0%	1	0.3%
German	1	0.2%	0	0.0%	0	0.0%	0	0.0%	0	0.0%
History	9	2.2%	6	1.7%	7	2.2%	4	1.2%	7	2.3%
International Business & Language	3	0.7%	2	0.6%	3	0.9%	2	0.6%	2	0.7%
International Studies	1	0.2%	0	0.0%	0	0.0%	2	0.6%	1	0.3%
Italian Studies	0	0.0%	0	0.0%	0	0.0%	0	0.0%	0	0.0%
Journalism	13	3.2%	10	2.8%	9	2.8%	10	3.0%	9	3.0%
Legal Studies	16	4.0%	15	4.3%	2	0.6%	5	1.5%	4	1.3%
Liberal Arts	6	1.5%	4	1.1%	3	0.9%	1	0.3%	5	1.7%
Mathematics	5	1.2%	6	1.7%	3	0.9%	3	0.9%	5	1.7%
Movement & Sports Science	7	1.7%	10	2.8%	3	0.9%	9	2.7%	8	2.6%
Music	2	0.5%	0	0.0%	0	0.0%	2	0.6%	0	0.0%
Natural History	1	0.2%	0	0.0%	0	0.0%	0	0.0%	0	0.0%
Philosophy	0	0.0%	2	0.6%	0	0.0%	1	0.3%	1	0.3%
Physics	1	0.2%	0	0.0%	1	0.3%	0	0.0%	0	0.0%
Political Science	6	1.5%	11	3.1%	10	3.1%	13	3.9%	15	5.0%
Psychology	33	8.2%	28	8.0%	29	9.1%	27	8.0%	24	7.9%
Religion/Philosophy	0	0.0%	0	0.0%	2	0.6%	1	0.3%	0	0.0%
Social Science	2	0.5%	1	0.3%	0	0.0%	1	0.3%	1	0.3%
Sociology	4	1.0%	4	1.1%	3	0.9%	6	1.8%	1	0.3%
Spanish	0	0.0%	2	0.6%	0	0.0%	1	0.3%	0	0.0%
Speech Communication	1	0.2%	0	0.0%	1	0.3%	6	1.8%	0	0.0%
Theatre Arts	5	1.2%	9	2.6%	6	1.9%	3	0.9%	8	2.6%
	232	57.6%	212	60.2%	196	61.4%	190	56.5%	181	59.9%
Business & Public Management										
Accounting	4	1.0%	2	0.6%	4	1.3%	8	2.4%	6	2.0%
Business Administration/Management	24	6.0%	31	8.8%	52	16.3%	55	16.4%	47	15.6%
Economics	1	0.2%	0	0.0%	2	0.6%	4	1.2%	5	1.7%
E-Commerce	0	0.0%	1	0.3%	1	0.3%	0	0.0%	4	1.3%
Health Administration	3	0.7%	0	0.0%	0	0.0%	0	0.0%	0	0.0%
Marketing	2	0.5%	3	0.9%	0	0.0%	0	0.0%	0	0.0%
Public Administration	1	0.2%	2	0.6%	0	0.0%	2	0.6%	1	0.3%
	35	8.7%	39	11.1%	59	18.5%	69	20.5%	63	20.9%
Education & Organizational Leadership										
Child Development	4	1.0%	6	1.7%	1	0.3%	6	1.8%	5	1.7%
Liberal Studies	20	5.0%	20	5.7%	24	7.5%	28	8.3%	17	5.6%
	24	6.0%	26	7.4%	25	7.8%	34	10.1%	22	7.3%
College not Assigned										
Major not declared	112	27.8%	75	21.3%	39	12.2%	43	12.8%	36	11.9%
Grand Total All Students	403	100%	352	100%	319	100%	336	100%	302	100%

Source: Fall 2002-Fall 2005, Institutional Research Admission Census on October 15; Fall 2006 and after, Institutional Research Annual Census on November 15.

**B-12: New Main Campus Traditional-Age Transfers by Major
Fall 2004 - Fall 2008**

College Major	Fall 2004		Fall 2005		Fall 2006		Fall 2007		Fall 2008	
	Count	%	Count	%	Count	%	Count	%	Count	%
Arts & Sciences										
Anthropology	1	0.7%	0	0.0%	0	0.0%	0	0.0%	0	0.0%
Art/Art History	0	0.0%	1	0.8%	2	1.4%	3	2.2%	0	0.0%
Athletic Training	1	0.7%	4	3.1%	1	0.7%	1	0.7%	1	0.8%
Behavioral Science	2	1.3%	1	0.8%	1	0.7%	0	0.0%	0	0.0%
Biology	3	2.0%	1	0.8%	10	6.8%	3	2.2%	5	4.2%
Broadcasting	3	2.0%	9	6.9%	2	1.4%	2	1.5%	4	3.4%
Chemistry	2	1.3%	0	0.0%	1	0.7%	1	0.7%	0	0.0%
Communications	13	8.6%	4	3.1%	9	6.1%	12	8.8%	4	3.4%
Comparative Literature	0	0.0%	0	0.0%	0	0.0%	0	0.0%	0	0.0%
Computer Science & Engineering	2	1.3%	0	0.0%	2	1.4%	1	0.7%	3	2.5%
Criminology	8	5.3%	6	4.6%	4	2.7%	6	4.4%	2	1.7%
English	2	1.3%	4	3.1%	1	0.7%	1	0.7%	5	4.2%
French	0	0.0%	0	0.0%	0	0.0%	4	2.9%	0	0.0%
History	7	4.6%	3	2.3%	5	3.4%	1	0.7%	3	2.5%
International Business & Language	0	0.0%	2	1.5%	0	0.0%	6	4.4%	2	1.7%
International Studies	0	0.0%	0	0.0%	2	1.4%	1	0.7%	0	0.0%
Journalism	2	1.3%	0	0.0%	2	1.4%	0	0.0%	2	1.7%
Legal Studies/Paralegal Studies	2	1.3%	6	4.6%	5	3.4%	2	1.5%	0	0.0%
Liberal Arts	4	2.6%	4	3.1%	1	0.7%	3	2.2%	1	0.8%
Mathematics	1	0.7%	1	0.8%	2	1.4%	1	0.7%	0	0.0%
Movement & Sports Science	8	5.3%	3	2.3%	11	7.4%	1	0.7%	13	11.0%
Music	1	0.7%	0	0.0%	0	0.0%	7	5.1%	0	0.0%
Philosophy	1	0.7%	0	0.0%	1	0.7%	1	0.7%	1	0.8%
Physics	0	0.0%	0	0.0%	1	0.7%	1	0.7%	0	0.0%
Political Science	2	1.3%	4	3.1%	10	6.8%	3	2.2%	1	0.8%
Psychology	14	9.3%	11	8.5%	6	4.1%	8	5.9%	13	11.0%
Religion/Philosophy	0	0.0%	1	0.8%	2	1.4%	2	1.5%	0	0.0%
Social Science	0	0.0%	1	0.8%	1	0.7%	1	0.7%	1	0.8%
Sociology	4	2.6%	3	2.3%	5	3.4%	5	3.7%	2	1.7%
Spanish	1	0.7%	2	1.5%	0	0.0%	1	0.7%	0	0.0%
Speech Communication	1	0.7%	0	0.0%	1	0.7%	1	0.0%	0	0.0%
Theatre Arts	0	0.0%	3	2.3%	3	2.0%	1	0.7%	1	0.8%
	85	56.3%	74	56.9%	91	61.5%	80	58.1%	64	54.2%
Business & Public Management										
Accounting	2	1.3%	0	0.0%	3	2.0%	4	2.9%	5	4.2%
Business Admin./Mgmt.	19	12.6%	14	10.8%	32	21.6%	32	23.5%	19	16.1%
Economics	0	0.0%	0	0.0%	0	0.0%	0	0.0%	1	0.8%
E-Commerce	0	0.0%	0	0.0%	1	0.7%	0	0.0%	1	0.8%
Health Administration	0	0.0%	0	0.0%	0	0.0%	0	0.0%	0	0.0%
Marketing	5	3.3%	5	3.8%	0	0.0%	0	0.0%	0	0.0%
Organizational Management	0	0.0%	0	0.0%	1	0.7%	0	0.0%	1	0.8%
Public Administration	0	0.0%	2	1.5%	0	0.0%	0	0.0%	0	0.0%
	26	17.2%	21	16.2%	37	25.0%	36	26.5%	27	22.9%
Education & Organizational Leadership										
Child Development	3	2.0%	4	3.1%	4	2.7%	4	2.9%	0	0.0%
Liberal Studies	10	6.6%	14	10.8%	10	6.8%	8	6.3%	16	13.6%
Multiple Subject	0	0.0%	0	0.0%	0	0.0%	2	1.5%	2	1.7%
	13	8.6%	18	13.8%	14	9.5%	14	10.7%	18	15.3%
College not Assigned										
Major not declared	27	17.9%	17	13.1%	6	4.1%	6	4.4%	9	7.6%
Grand Total All Students	151	100%	130	100%	148	100%	136	100%	118	100%

Source: Fall 2003-Fall 2005, Institutional Research Admission Census on October 15; Fall 2006 and after, Institutional Research Annual Census on November 15.

B-13: New RCA Undergraduate Enrollment by Gender and Ethnicity*
Fall 2004 - Fall 2008

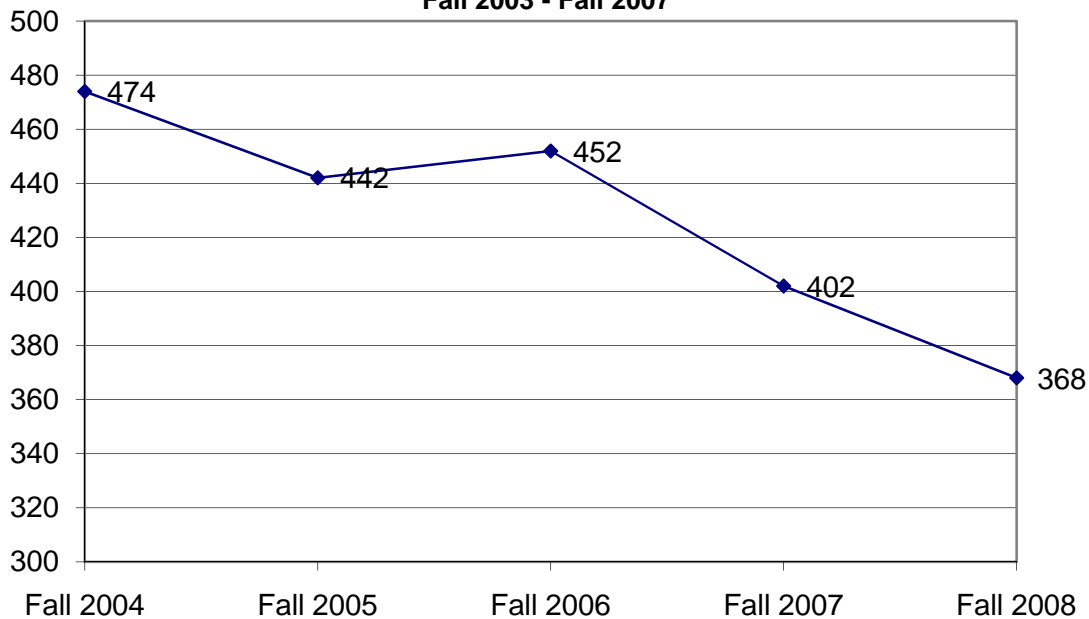
New RCA Undergraduates by Gender

Gender	Fall 2004		Fall 2005		Fall 2006		Fall 2007		Fall 2008	
	Count	%	Count	%	Count	%	Count	%	Count	%
Female	357	75.3%	340	76.9%	340	75.2%	287	71.4%	257	69.8%
Male	103	21.7%	94	21.3%	112	24.8%	107	26.6%	111	30.2%
Not Reported	14	3.0%	8	1.8%	0	0.0%	8	2.0%	0	0.0%
Total	474	100.0%	442	100.0%	452	100.0%	402	#####	368	#####

New RCA Undergraduates by Ethnicity

Ethnicity	Fall 2004		Fall 2005		Fall 2006		Fall 2007		Fall 2008	
	Count	%	Count	%	Count	%	Count	%	Count	%
American Indian/ Alaskan Native	6	1.3%	6	1.4%	6	1.3%	3	0.7%	5	1.4%
African American	50	10.5%	48	10.9%	47	10.4%	37	9.2%	28	7.6%
Caucasian	166	35.0%	149	33.7%	130	28.8%	125	31.1%	119	32.3%
Latino/Hispanic	167	35.2%	152	34.4%	163	36.1%	144	35.8%	135	36.7%
Asian American/ Pacific Islander	12	2.5%	15	3.4%	18	4.0%	22	5.5%	11	3.0%
Other	14	3.0%	11	2.5%	19	4.2%	12	3.0%	17	4.6%
International		0.0%		0.0%		0.0%	0	0.0%	0	0.0%
Unknown	59	12.4%	61	13.8%	69	15.3%	59	14.7%	53	14.4%
Total	474	100%	442	100%	452	100%	402	100%	368	100%

New RCA Undergraduate Student Enrollment
Fall 2003 - Fall 2007



* RCA (Regional Campus Administration) includes Distance Learning, CAPA, Central Coast Campus, Inland Empire Campus, High Desert Victorville Campus, Kern County Campus, Orange County Campus, Pt. Mugu Campus, San Fernando Campus, RC Education, RC Teacher Education, Ventura Campus, Vandenberg Campus, and Bakersfield Campus.

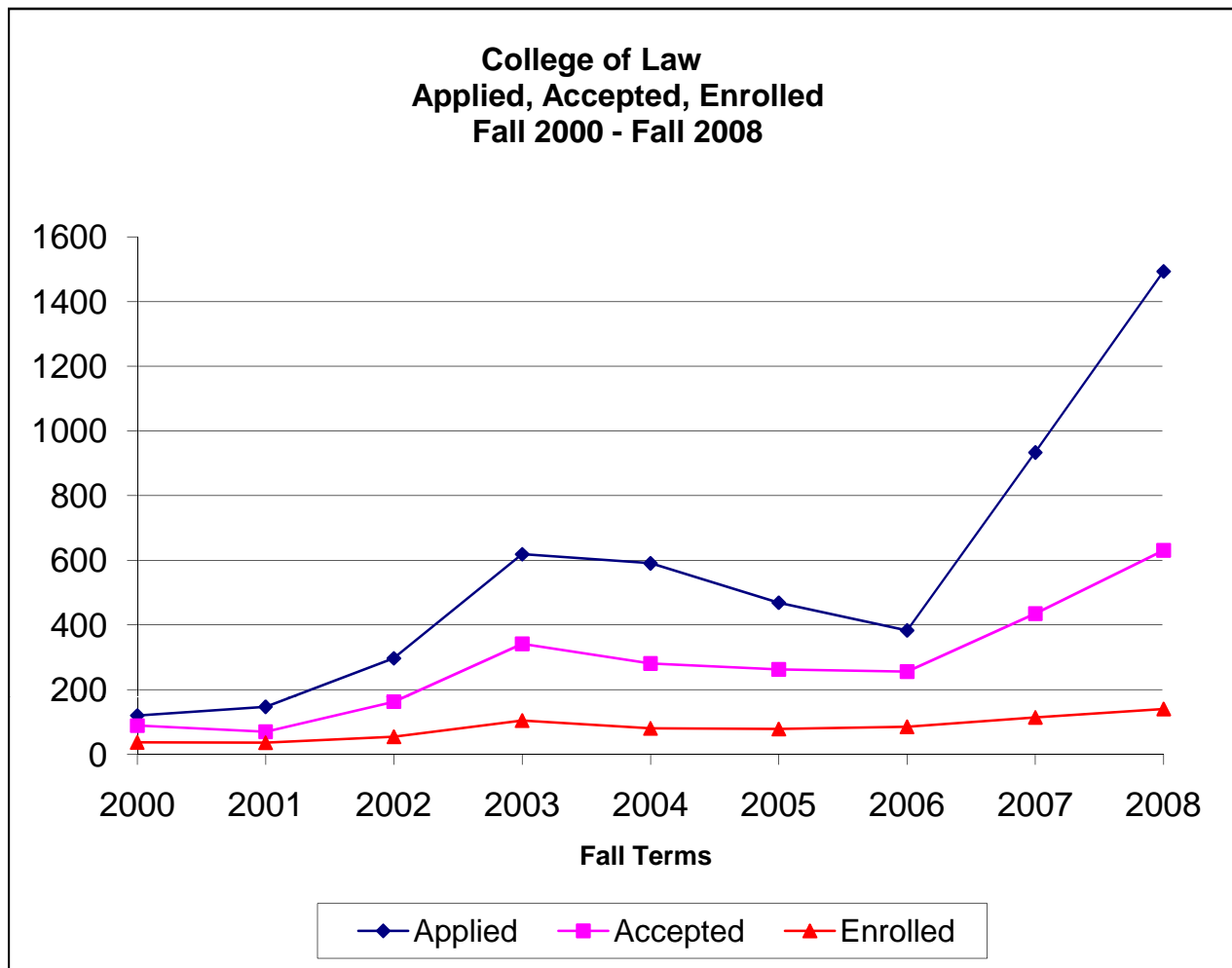
Source: Institutional Research Annual Census on November 15.

**B-14: New RCA Undergraduate Student Enrollment by Major
Fall 2004 - Fall 2008**

College Major	Fall 2004 Count	Fall 2004 %	Fall 2005 Count	Fall 2005 %	Fall 2006 Count	Fall 2006 %	Fall 2007 Count	Fall 2007 %	Fall 2008 Count	Fall 2008 %
Arts & Sciences										
Anthropology	2	0.4%	0	0.0%	0	0.0%	0	0.0%	0	0.0%
Art	3	0.6%	1	0.2%	1	0.2%	0	0.0%	0	0.0%
Art History	1	0.2%	1	0.2%	0	0.0%	1	0.2%	0	0.0%
Behavioral Science	8	1.7%	1	0.2%	3	0.7%	7	1.7%	4	1.1%
Biology	2	0.4%	3	0.7%	3	0.7%	0	0.0%	0	0.0%
Broadcasting	1	0.2%	1	0.2%	0	0.0%	0	0.0%	0	0.0%
Chemistry	0	0.0%	0	0.0%	1	0.2%	0	0.0%	0	0.0%
Communications	0	0.0%	1	0.2%	2	0.4%	0	0.0%	1	0.3%
Comparative Literature	0	0.0%	0	0.0%	1	0.2%	0	0.0%	0	0.0%
Computer Science & Engineering	2	0.4%	1	0.2%	2	0.4%	4	1.0%	2	0.5%
Criminology	14	3.0%	4	0.9%	14	3.1%	7	1.7%	7	1.9%
English	9	1.9%	4	0.9%	3	0.7%	2	0.5%	1	0.3%
History	3	0.6%	0	0.0%	0	0.0%	3	0.7%	1	0.3%
Journalism	0	0.0%	0	0.0%	0	0.0%	1	0.2%	0	0.0%
Legal Studies*	16	3.4%	10	2.3%	17	3.8%	9	2.2%	13	3.5%
Liberal Arts	0	0.0%	0	0.0%	0	0.0%	1	0.2%	0	0.0%
Mathematics	0	0.0%	0	0.0%	1	0.2%	3	0.7%	0	0.0%
Movement & Sports Science	2	0.4%	2	0.5%	3	0.7%	2	0.5%	0	0.0%
Music	0	0.0%	1	0.2%	0	0.0%	0	0.0%	0	0.0%
Political Science	6	1.3%	0	0.0%	1	0.0%	1	0.0%	3	0.0%
Psychology	12	2.5%	13	2.9%	18	4.0%	12	3.0%	14	3.8%
Social Science	1	0.2%	3	0.7%	0	0.0%	2	0.5%	3	0.8%
Sociology	11	2.3%	7	1.6%	7	1.5%	8	2.0%	8	2.2%
Spanish	0	0.0%	2	0.5%	1	0.2%	0	0.0%	1	0.3%
Speech Communication	0	0.0%	0	0.0%	1	0.2%	0	0.0%	0	0.0%
	93	19.6%	55	12.4%	79	17.3%	63	15.4%	58	14.9%
Business & Public Management										
Accounting	9	1.9%	6	1.4%	5	1.1%	10	2.5%	6	1.6%
Applied Management	0	0.0%	0	0.0%	0	0.0%	0	0.0%	0	0.0%
Business Admin./Mgmt.	88	18.6%	85	19.2%	83	18.4%	119	29.6%	75	20.4%
Economics	0	0.0%	0	0.0%	1	0.0%	0	0.0%	0	0.0%
E-Commerce	1	0.2%	1	0.2%	0	0.0%	0	0.0%	0	0.0%
Health Administration*	9	1.9%	6	1.4%	5	1.1%	2	0.5%	7	1.9%
Organizational Management*	67	14.1%	72	16.3%	63	13.9%	79	19.7%	84	22.8%
Public Administration*	14	3.0%	15	3.4%	16	3.5%	10	2.5%	30	8.2%
	188	39.7%	185	41.9%	173	38.1%	220	54.7%	202	54.9%
Education & Organizational Leadership										
Child Development	63	13.3%	96	21.7%	105	23.2%	41	10.2%	47	12.8%
Liberal Studies	129	27.2%	100	22.6%	92	20.4%	76	18.9%	59	16.0%
Multiple Subject	0	0.0%	4	0.9%	1	0.2%	0	0.0%	0	0.0%
Single Subject	0	0.0%	2	0.5%	1	0.2%	0	0.0%	1	0.3%
	192	40.5%	202	45.7%	199	44.0%	117	29.1%	107	29.1%
College not Assigned										
Major not declared	1	0.2%	0	0.0%	1	0.2%	2	0.5%	1	0.3%
Grand Total All Students	474	100%	442	100%	452	100%	402	100%	368	99%

Source: Institutional Research Annual Census on November 15.

B-15: Application, Acceptance, and Enrollment Statistics for the College of Law*



Fall	Applied	Acceptance		Enrolled	Yield Rate
		Accepted	Rate		
2000	120	89	74%	37	42%
2001	147	70	48%	36	51%
2002	297	163	55%	54	33%
2003	619	342	55%	104	30%
2004	591	281	48%	80	28%
2005	469	263	56%	78	30%
2006	383	256	67%	85	33%
2007	934	435	47%	114	26%
2008	1494	631	42%	140	22%

* Does not include students at the former San Fernando Valley Campus.

Source: Admissions Office, ULV College of Law; Institutional Research Annual Census on November 15; Institutional Research Admission Census on October 15..

**B-16: New Main Campus Masters Students by Major/Credential
Fall 2004 - Fall 2008**

Major	Fall 2004		Fall 2005		Fall 2006		Fall 2007		Fall 2008	
College of Arts & Sciences										
Counseling (Concentration/Special Emphasis)	10	2.5%	4	1.1%	9	2.8%	10	2.6%	2	0.5%
Marriage & Family Therapy (MFT)	27	6.7%	25	6.6%	15	4.7%	21	5.6%	21	5.6%
Student Self-Designed Major		0.0%	0	0.0%	0	0.0%	0	0.0%	1	0.3%
	37	9.1%	29	7.7%	24	7.5%	31	8.2%	24	6.4%
College of Business & Public Management										
Business Administration	73	18.0%	86	22.7%	95	29.5%	92	24.3%	121	32.3%
Business Information Technology	0	0.0%	0	0.0%	0	0.0%	2	0.5%	0	0.0%
Business Organizational Management	0	0.0%	0	0.0%	1	0.3%	0	0.0%	0	0.0%
Gerontology	9	2.2%	5	1.3%	5	1.6%	7	1.9%	4	1.1%
Health Services Administration	7	1.7%	5	1.3%	8	2.5%	11	2.9%	14	3.7%
Leadership & Management	11	2.7%	16	4.2%	11	3.4%	16	4.2%	28	7.5%
Public Administration	12	3.0%	14	3.7%	15	4.7%	21	5.6%	19	5.1%
	112	27.7%	126	33.2%	135	41.9%	149	39.4%	186	49.6%
College of Education & Organizational Leadership										
Child Development	4	1.0%	12	3.2%	8	2.5%	4	1.1%	8	2.1%
Child Life	8	2.0%	12	3.2%	10	3.1%	19	5.0%	11	2.9%
Educational Management	7	1.7%	5	1.3%	4	1.2%	4	1.1%	4	1.1%
Multiple Subject (Credential)	44	10.9%	61	16.1%	32	9.9%	44	11.6%	34	9.1%
Preliminary Administrative Services (Credential)	6	1.5%	1	0.3%	2	0.6%	0	0.0%	2	0.5%
Pupil Personnel Services (Credential)	0	0.0%	1	0.3%	0	0.0%	0	0.0%	4	1.1%
Reading	7	1.7%	8	2.1%	6	1.9%	6	1.6%	13	3.5%
School/Educational Counseling	20	4.9%	18	4.7%	26	8.1%	40	10.6%	32	8.5%
Single Subject (Credential)	37	9.1%	36	9.5%	31	9.6%	26	6.9%	22	5.9%
Special Education	6	1.5%	2	0.5%	3	0.9%	11	2.9%	6	1.6%
Special Emphasis	117	28.9%	68	17.9%	41	12.7%	42	11.1%	28	7.5%
	256	63.2%	224	59.1%	163	50.6%	196	51.9%	164	43.7%
Major not Declared	0	0.0%	0	0.0%	0	0.0%	2	0.0%	1	0.0%
Total Masters Majors	405	100%	379	100%	322	100%	378	99%	375	100%

**B- 17: New Doctoral Students by Major/Credential
Fall 2004 - Fall 2008**

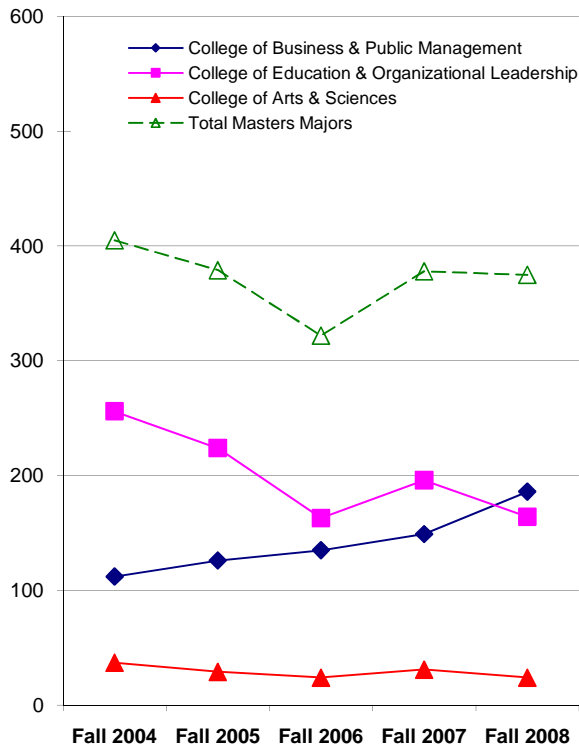
Major	Fall 2004		Fall 2005		Fall 2006		Fall 2007		Fall 2008	
Clinical-Community Psychology (PsyD)	18	21.2%	18	25.7%	13	22.0%	21	23.6%	21	27.3%
Educational/Organizational Leadership/Management (EdD)	48	56.5%	32	45.7%	23	39.0%	50	56.2%	30	39.0%
Professional Administrative Services (Credential)	0	0.0%	0	0.0%	2	3.4%	0	0.0%	1	1.3%
Public Administration (DPA)	17	20.0%	20	28.6%	21	35.6%	18	20.2%	25	32.5%
	83	97.6%	70	100.0%	59	100.0%	89	100.0%	77	100.0%
Major not Declared	2	2.4%	0	0.0%	0	0.0%	0	0.0%	0	0.0%
Total Doctoral Majors	85	100%	70	100%	59	100%	89	100%	77	100%

Source: Institutional Research Annual Census on November 15.

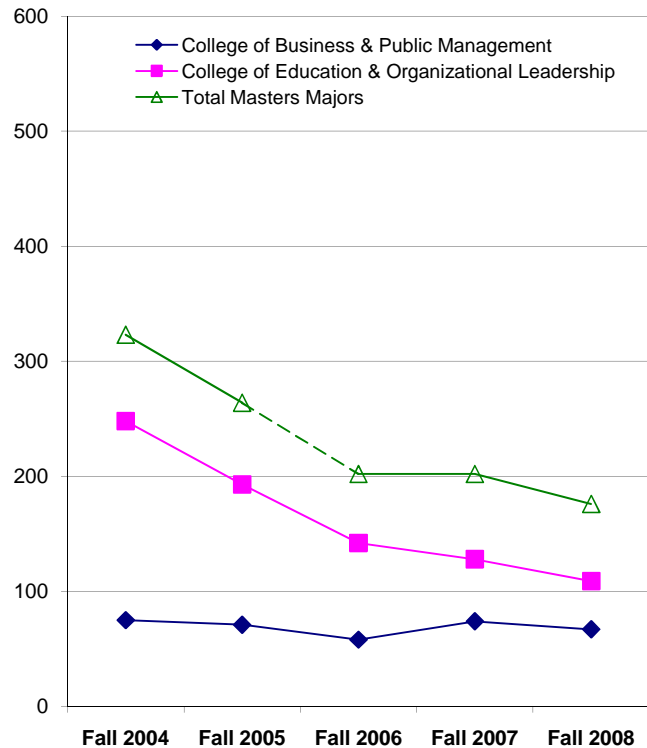
**B-18: New RCA Masters Students by Major/Credential
Fall 2004 - Fall 2008**

Major	Fall 2004	Fall 2005	Fall 2006	Fall 2007	Fall 2008
College of Business & Public Management					
Business Administration	62	63	49	55	50
Business Organizational Management	8	5	6	5	1
Health Services Administration	0	0	0	0	3
Leadership & Management	4	1	0	12	13
Public Administration	1	2	3	2	0
	75	71	58	74	67
	23.2%	26.9%	28.7%	36.6%	38.1%
College of Education & Organizational Leadership					
Child Development	11	22	0	0	0
Educational Management	39	29	20	7	6
Multiple Subject (Credential)	22	24	27	24	20
Preliminary Administrative Services (Credential)	13	2	2	0	1
Reading	11	2	0	0	0
School/Educational Counseling	60	54	53	68	42
Single Subject (Credential)	27	16	8	11	8
Special Education	1	4	3	1	5
Special Emphasis	39	39	29	17	27
Special Emphasis: Advanced Teaching Methods	25	1	0	0	0
	248	193	142	128	109
	76.8%	73.1%	70.3%	63.4%	61.9%
Major not Declared	0	0	2	0	0
	0.0%	0.0%	1.0%	0.0%	0.0%
Total Masters Majors	323	264	202	202	176
	100%	100%	100%	100%	100%

**New Main Campus Master Level Students
Fall 2004 - Fall 2008**



**New RCA Master Level Students
Fall 2004 - Fall 2008**



Source: Institutional Research Annual Census on November 15.

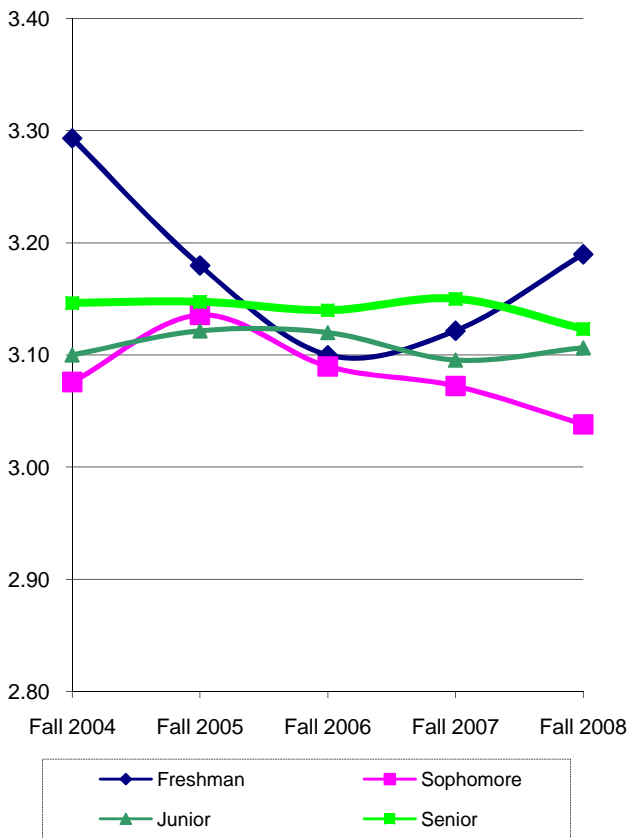
C.
PERFORMANCE
INDICATORS

All statistics are based on data from La Verne's census on November 15 for each year specified, unless otherwise noted.

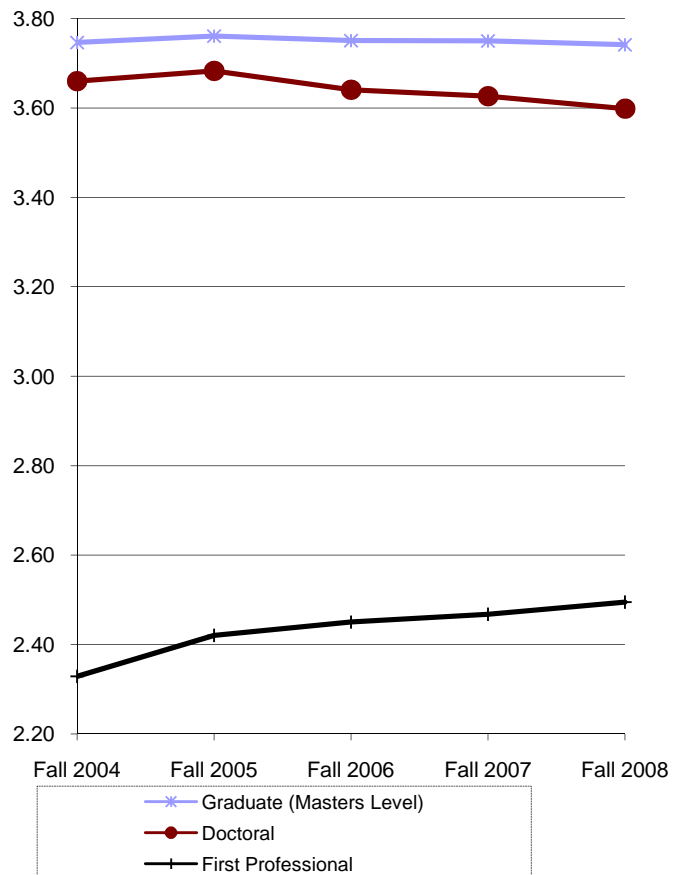
**C-1: Student Cumulative GPA by Level
Fall 2004 - Fall 2008**

Student Level	Fall 2004		Fall 2005		Fall 2006		Fall 2007		Fall 2008	
	Median	Mean	Median	Mean	Median	Mean	Median	Mean	Median	Mean
Freshman	3.43	3.29	3.30	3.18	3.22	3.10	3.30	3.12	3.36	3.19
Sophomore	3.10	3.08	3.20	3.14	3.09	3.09	3.11	3.07	3.08	3.04
Junior	3.09	3.10	3.14	3.12	3.14	3.12	3.10	3.10	3.12	3.11
Senior	3.15	3.15	3.15	3.15	3.14	3.14	3.16	3.15	3.12	3.12
Graduate (Masters Level)	3.86	3.75	3.86	3.76	3.85	3.75	3.85	3.75	3.85	3.74
Doctoral	3.72	3.66	3.74	3.68	3.71	3.64	3.71	3.63	3.71	3.60
First Professional	2.29	2.33	2.35	2.42	2.41	2.45	2.45	2.47	2.45	2.49
ULV Overall	3.43	3.35	3.43	3.36	3.42	3.35	3.41	3.34	3.41	3.34

**Means of Undergraduate Student GPA
Fall 2004 - Fall 2008**



**Means of Graduate Student GPA
Fall 2004 - Fall 2008**



Source: Institutional Research Annual Census on November 15.

C-2: Retention Rates* for Main Campus First-Time Full-Time Traditional-Age Entering Freshmen
Fall 1995 - Fall 2006**

Entering Fall Term	Students Continuing at ULV												
	FT Count	After 1 Year		After 2 Years		After 3 Years		After 4 Years		After 5 Years		After 6 Years	
1995	184	139	76%	113	61%	100	54%	28	15%	10	5%	4	2%
1996	196	153	78%	126	64%	122	62%	35	18%	10	5%	5	3%
1997	202	167	83%	149	74%	135	67%	44	22%	9	4%	7	3%
1998	321	267	83%	217	68%	195	61%	59	18%	12	4%	12	4%
1999	320	255	80%	228	71%	215	67%	50	16%	10	3%	3	1%
2000	285	236	83%	211	74%	202	71%	71	25%	14	5%	4	1%
2001	305	257	84%	234	77%	223	73%	63	21%	16	5%	8	3%
2002	294	258	88%	227	77%	227	77%	60	20%	19	6%	8	3%
2003	289	253	88%	228	79%	219	76%	70	24%	19	7%		
2004	375	333	89%	300	80%	281	75%	82	22%				
2005	332	267	80%	234	70%	219	66%						
2006	314	266	85%	227	72%								
2007	334	263	79%										
2008	299												

C-3: Graduation Rates* for Main Campus First-Time Full-Time Traditional-Age Entering Freshmen
Fall 1995 - Fall 2003**

Entering Fall Term	Head Count	Students Graduating from ULV							
		Within 4 Years	Within 5 Years	Within 6 Years	Within 6 or More Years****				
1995	184	76	41%	78	42%	85	46%	91	49%
1996	196	60	31%	87	44%	92	47%	106	54%
1997	202	62	31%	97	48%	102	50%	113	56%
1998	321	106	33%	147	46%	157	49%	168	52%
1999	320	123	38%	159	50%	168	53%	174	54%
2000	285	93	33%	134	47%	145	51%	151	53%
2001	305	126	41%	167	55%	177	58%	188	62%
2002	294	124	42%	166	56%	180	61%		
2003	289	125	43%	173	60%				
2004	375	184	49%						
2005	332								

* It is referred to the number and percent of students in a cohort who stayed. The first fall-to-fall (first-year) retention rates are often used in speeches and publications regarding retention.

** This first-time, full-time, degree-seeking first-year students (freshmen) cohort is often referred as GRS (Graduation Rates) Cohort in research on retention rates and graduation rates.

*** It is referred to the number and percent of students in a cohort who graduated. The graduation dates for an specific year are between between September 1 and August 31, as defined by IPEDS.

**** The numbers and percentages in this column are cumulative, which include everyone who has ever graduated of that cohort.

Source: Institutional Research Annual Census on November 15.

**C-4: The First Fall-to-Fall (First-Year) Retention Rates for Main Campus First-Time Full-Time Traditional-Age Freshmen by Ethnicity*
Fall 1995 - Fall 2007**

Cohort	Caucasian			African-American			Hispanic/ Latino			Asian/Pacific Islander			Other			Ethnicity Unknown		
	1st Fall	2nd Fall	Rate	1st Fall	2nd Fall	Rate	1st Fall	2nd Fall	Rate	1st Fall	2nd Fall	Rate	1st Fall	2nd Fall	Rate	1st Fall	2nd Fall	Rate
1995	77	54	70%	20	16	80%	61	50	82%	23	17	74%	3	2	67%	0	0	-
1996	75	62	83%	19	15	79%	81	63	78%	15	8	53%	5	4	80%	1	1	100%
1997	86	72	84%	20	15	75%	62	52	84%	12	10	83%	17	16	94%	5	2	40%
1998	125	98	78%	26	23	88%	118	106	90%	22	16	73%	26	21	81%	4	3	75%
1999	114	86	75%	31	28	90%	112	96	86%	28	20	71%	20	12	60%	15	13	87%
2000	117	90	77%	32	29	91%	88	78	89%	22	16	73%	6	4	67%	20	19	95%
2001	105	83	79%	19	17	89%	125	108	86%	20	19	95%	8	4	50%	28	26	93%
2002	92	81	88%	24	22	92%	117	106	91%	14	12	86%	9	7	40%	37	31	84%
2003	106	91	86%	23	21	91%	119	104	87%	15	15	100%	14	13	93%	11	8	73%
2004	129	118	91%	31	25	81%	152	133	88%	12	11	92%	26	23	88%	25	23	92%
2005	98	79	81%	31	21	68%	130	108	83%	15	12	80%	25	19	76%	33	28	85%
2006	95	81	85%	22	17	77%	138	116	84%	16	14	88%	19	15	79%	24	23	96%
2007	97	76	78%	18	14	78%	151	121	80%	11	9	82%	5	2	76%	52	41	79%

* The first fall-to-fall (first-year) retention rate calculates the percentage of students who stay in the second Fall after they entered ULV in a given Fall term.
Source: Institutional Research Annual Census on November 15.

**C-5: Graduation Rates (Within 6 Years) for Main Campus First-Time Full-Time Traditional-Age Freshmen by Ethnicity
Fall 1995 - Fall 2004**

Cohort	Caucasian			African-American			Hispanic/ Latino			Asian/Pacific Islander			Other			Ethnicity Unknown		
	Total	Graduated	Rate	Total	Graduated	Rate	Total	Graduated	Rate	Total	Graduated	Rate	Total	Graduated	Rate	Total	Graduated	Rate
1995	77	30	39%	20	7	35%	61	34	56%	23	12	52%	3	2	67%	0	0	-
1996	75	39	52%	19	5	26%	81	40	49%	15	4	27%	5	2	40%	1	1	100%
1997	86	49	57%	20	9	45%	62	29	47%	12	4	33%	17	9	53%	5	2	40%
1998	125	56	45%	26	15	58%	118	65	55%	22	6	27%	26	13	50%	4	2	50%
1999	114	62	54%	31	16	52%	112	65	58%	28	10	36%	20	6	30%	15	9	60%
2000	117	59	50%	32	18	56%	88	46	52%	22	9	41%	6	1	17%	20	11	55%
2001	105	60	57%	19	12	63%	125	71	57%	20	12	60%	8	3	38%	28	19	68%
2002	92	56	61%	24	14	58%	117	74	63%	14	9	64%	9	6	67%	37	34	92%
2003*	106	64	60%	23	14	61%	119	71	60%	15	11	73%	14	5	36%	10	6	60%
2004**	129	72	56%	31	12	39%	152	72	47%	12	7	58%	26	7	27%	25	14	56%

* Graduation Rates are within 5 years for the cohort.

** Graduation Rates are within 4 years for the cohort.

Source: Institutional Research Annual Census on November 15.

**C-6: Retention Rates for Main Campus Full-Time Undergraduate Transfer Students*
Fall 1995 - Fall 2007**

Fall Term	FT Count	Students Continuing at La Verne											
		After 1 Year		After 2 Years		After 3 Years		After 4 Years		After 5 Years		After 6 Years	
1995	124	89	72%	46	37%	19	15%	5	4%	1	1%	1	1%
1996	136	90	66%	43	32%	21	15%	7	5%	0	0%	2	1%
1997	114	78	68%	41	36%	12	11%	5	4%	0	0%	0	0%
1998	136	103	76%	56	41%	15	11%	3	2%	1	1%	0	0%
1999	117	96	82%	48	41%	25	21%	7	6%	1	1%	1	1%
2000	129	95	74%	42	33%	12	9%	5	4%	3	2%	1	1%
2001	108	88	81%	39	36%	9	8%	2	2%	1	1%	0	0%
2002	110	83	75%	48	44%	13	12%	2	2%	2	2%	0	0%
2003	105	89	85%	43	41%	10	10%	1	1%	3	3%		
2004	160	130	81%	65	41%	19	12%	3	2%				
2005	127	110	87%	54	43%	10	8%						
2006	136	104	76%	51	38%								
2007	126	97	77%										
2008	110												

Source: Institutional Research Annual Census on November 15.

**C-7: Graduation Rates for Main Campus Full-Time Undergraduate Transfer Students*
Fall 1995 - Fall 2006**

Fall Term	Head Count	Students Graduating from La Verne										Within 6 or More Years**	
		Within 2 Years		Within 3 Years		Within 4 Years		Within 5 Years		Within 6 Years			
1995	124	24	19%	43	35%	60	48%	60	48%	61	49%	65	52%
1996	136	23	17%	42	31%	52	38%	59	43%	61	45%	65	48%
1997	114	23	20%	47	41%	57	50%	63	55%	63	55%	65	57%
1998	136	31	23%	59	43%	71	52%	75	55%	75	55%	76	56%
1999	117	26	22%	49	42%	59	50%	66	56%	66	56%	68	58%
2000	129	33	26%	57	44%	66	51%	74	57%	77	60%	80	62%
2001	108	29	27%	57	53%	63	58%	67	62%	68	63%	68	63%
2002	110	22	20%	52	47%	59	54%	61	55%	74	67%		
2003	105	31	30%	59	56%	63	60%	72	69%				
2004	160	54	34%	90	56%	103	64%						
2005	127	47	37%	80	63%								
2006	136	31	23%										
2007	126												

* Does not include CAPA.

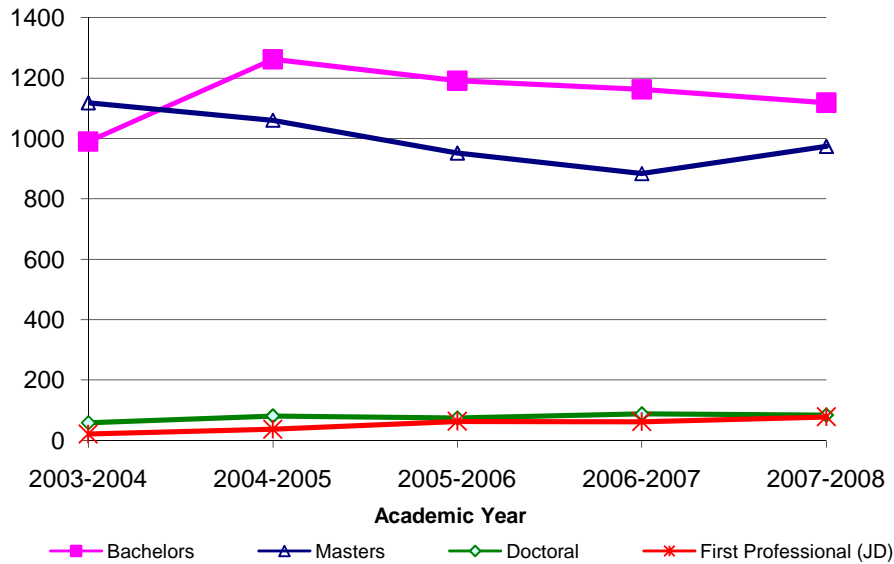
** The numbers and percentages in this column are cumulative, which include everyone who has ever graduated of that cohort.

Source: Institutional Research Annual Census on November 15.

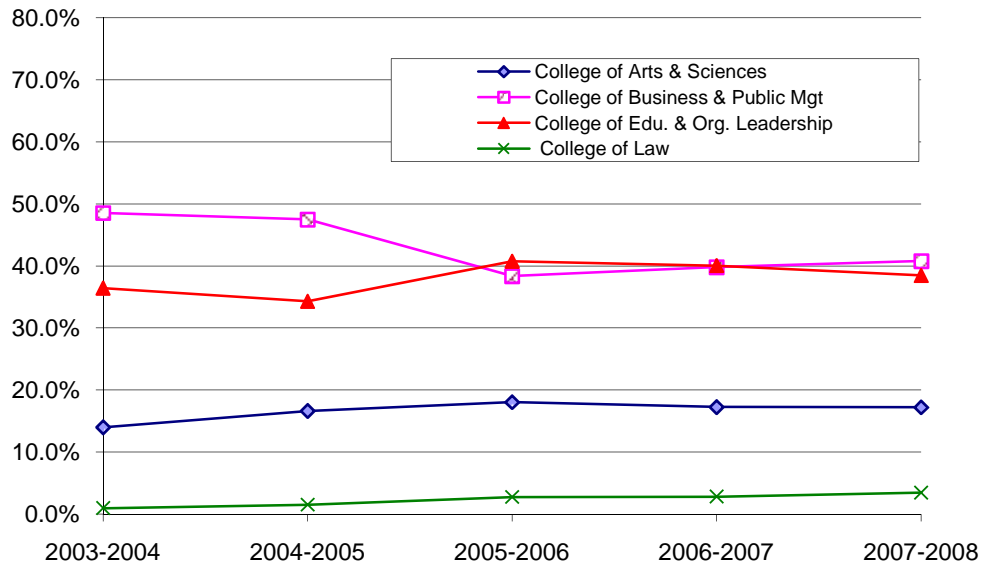
**C-8: Degrees Awarded between July 1 and June 30
2004 - 2008**

Degree Awarded	2003-2004		2004-2005		2005-2006		2006-2007		2007-2008	
Associate	3	0.1%	2	0.1%	1	0.0%	1	0.0%	0	0.0%
Bachelors	990	45.2%	1263	51.7%	1192	52.2%	1163	52.9%	1119	49.6%
Masters	1119	51.1%	1061	43.4%	952	41.7%	884	40.2%	974	43.2%
Doctoral	58	2.6%	81	3.3%	74	3.2%	88	4.0%	84	3.7%
First Professional (JD)	21	1.0%	37	1.5%	63	2.8%	62	2.8%	78	3.5%
Total	2191	100%	2444	100%	2282	100%	2198	100%	2255	100%

**Degrees Awarded by La Verne
2004-2008**



**Percentage of Total Degrees Awarded by Colleges
2004-2008**



Source: Institutional Research Annual Census on November 15.

**C-9: Bachelors Degrees Conferred to ULV Students
2004 - 2008**

Major	2003-2004		2004-2005		2005-2006		2006-2007		2007-2008	
College of Arts & Sciences										
Athletic Training	3	0.3%	3	0.2%	7	0.6%	9	0.8%	4	0.4%
Anthropology	1	0.1%	2	0.2%	3	0.3%	0	0.0%	2	0.2%
Art	8	0.8%	8	0.6%	6	0.5%	8	0.7%	9	0.8%
Art History	0	0.0%	0	0.0%	1	0.1%	2	0.2%	4	0.4%
Behavioral Science	11	1.1%	20	1.6%	19	1.6%	9	0.8%	8	0.7%
Biology	10	1.0%	5	0.4%	8	0.7%	7	0.6%	16	1.4%
Broadcasting	12	1.2%	16	1.3%	9	0.8%	12	1.0%	12	1.1%
Chemistry	2	0.2%	2	0.2%	3	0.3%	3	0.3%	4	0.4%
Communications	14	1.4%	13	1.0%	16	1.3%	16	1.4%	16	1.4%
Computer Science & Engineering	19	1.9%	23	1.8%	14	1.2%	9	0.8%	6	0.5%
Criminology	17	1.7%	41	3.2%	38	3.2%	34	2.9%	37	3.3%
English	13	1.3%	19	1.5%	18	1.5%	19	1.6%	14	1.3%
Environmental Biology	1	0.1%	0	0.0%	0	0.0%	1	0.1%	1	0.1%
Environmental Management	0	0.0%	1	0.1%	0	0.0%	0	0.0%	0	0.0%
French	0	0.0%	0	0.0%	0	0.0%	2	0.2%	0	0.0%
History	2	0.2%	7	0.6%	6	0.5%	13	1.1%	7	0.6%
International Business & Language	7	0.7%	4	0.3%	3	0.3%	6	0.5%	5	0.4%
International Studies	0	0.0%	0	0.0%	2	0.2%	1	0.1%	1	0.1%
Journalism	4	0.4%	6	0.5%	14	1.2%	13	1.1%	8	0.7%
Legal/Paralegal Studies	12	1.2%	12	1.0%	19	1.6%	20	1.7%	24	2.1%
Liberal Arts	1	0.1%	1	0.1%	6	0.5%	4	0.3%	3	0.3%
Mathematics	3	0.3%	4	0.3%	1	0.1%	3	0.3%	2	0.2%
Movement & Sports Science/Phys Ed	17	1.7%	24	1.9%	20	1.7%	17	1.5%	20	1.8%
Music	2	0.2%	4	0.3%	7	0.6%	3	0.3%	1	0.1%
Natural Science	0	0.0%	1	0.1%	0	0.0%	0	0.0%	1	0.1%
Philosophy	0	0.0%	2	0.2%	2	0.2%	1	0.1%	1	0.1%
Physics	2	0.2%	0	0.0%	0	0.0%	2	0.2%	2	0.2%
Political Science	10	1.0%	27	2.1%	16	1.3%	10	0.9%	12	1.1%
Psychology	50	5.1%	77	6.1%	77	6.5%	71	6.1%	57	5.1%
Religion	3	0.3%	2	0.2%	3	0.3%	0	0.0%	0	0.0%
Religion & Philosophy	1	0.1%	3	0.2%	1	0.1%	1	0.1%	3	0.3%
Social Science	8	0.8%	7	0.6%	3	0.3%	6	0.5%	3	0.3%
Sociology	11	1.1%	9	0.7%	30	2.5%	20	1.7%	19	1.7%
Spanish	2	0.2%	2	0.2%	2	0.2%	0	0.0%	1	0.1%
Speech Communication	5	0.5%	5	0.4%	5	0.4%	9	0.8%	17	1.5%
Theatre Arts	1	0.1%	1	0.1%	2	0.2%	3	0.3%	4	0.4%
Student Designed Majors	0	0.0%	0	0.0%	2	0.2%	0	0.0%	5	0.4%
	252	25.5%	351	27.8%	363	30.5%	334	28.7%	329	29.4%
College of Business & Public Management										
Accounting	13	1.3%	18	1.4%	22	1.8%	21	1.8%	14	1.3%
Business Administration	271	27.4%	337	26.7%	251	21.1%	228	19.6%	238	21.3%
Business Management	0	0.0%	1	0.1%	0	0.0%	0	0.0%	4	0.4%
E-Commerce	0	0.0%	0	0.0%	2	0.2%	2	0.2%	2	0.2%
Economics	6	0.6%	11	0.9%	6	0.5%	7	0.6%	3	0.3%
Health Administration	26	2.6%	32	2.5%	33	2.8%	17	1.5%	12	1.1%
Marketing	6	0.6%	17	1.3%	4	0.3%	2	0.2%	2	0.2%
Organizational Management	180	18.2%	210	16.6%	163	13.7%	182	15.6%	171	15.3%
Public Administration	25	2.5%	25	2.0%	31	2.6%	24	2.1%	33	2.9%
Student Designed Majors	0	0.0%	0	0.0%	1	0.1%	0	0.0%	0	0.0%
	527	53.2%	651	51.5%	513	43.0%	483	41.5%	479	42.8%
College of Education & Organizational Leadership										
Child Development	42	4.2%	101	8.0%	105	8.8%	146	12.6%	121	10.8%
Child Development/Life	0	0.0%	0	0.0%	0	0.0%	0	0.0%	0	0.0%
Liberal Studies	169	17.1%	160	12.7%	211	17.7%	200	17.2%	190	17.0%
	211	21.3%	261	20.7%	316	26.5%	346	29.8%	311	27.8%
Total Bachelors Degrees Conferred	990	100%	1263	100%	1192	100%	1163	100%	1119	100%

Source: Institutional Research Annual Census on November 15.

**C-10: Masters Degrees Awarded
Fall 2004 - Fall 2008**

Major	2003-2004		2004-2005		2005-2006		2006-2007		2007-2008	
College of Arts & Sciences										
Counseling	24	2.1%	18	1.7%	16	1.7%	6	0.7%	5	0.5%
Counseling/Marriage & Family Therapy (MFT)	15	1.3%	17	1.6%	14	1.5%	18	2.0%	28	2.9%
Counseling (Special Emphasis)	1	0.1%	3	0.3%	4	0.4%	1	0.1%	0	0.0%
Psychology	6	0.5%	9	0.8%	1	0.1%	0	0.0%	16	1.6%
	46	4.1%	47	4.4%	35	3.7%	25	2.8%	49	5.0%
College of Business & Public Management										
Business Administration	365	32.6%	367	34.6%	266	27.8%	263	29.8%	325	33.4%
Business Information Technology	7	0.6%	11	1.0%	3	0.3%	4	0.5%	2	0.2%
Business Organizational Management	62	5.5%	41	3.9%	9	0.9%	18	2.0%	18	1.8%
Gerontology	8	0.7%	8	0.8%	12	1.3%	14	1.6%	11	1.1%
Health Administration	1	0.1%	1	0.1%	0	0.0%	7	0.8%	19	2.0%
Health Services Administration	22	2.0%	24	2.3%	18	1.9%	7	0.8%	0	0.0%
International Administration	0	0.0%	0	0.0%	0	0.0%	0	0.0%	0	0.0%
Leadership & Management	41	3.7%	25	2.4%	28	2.9%	38	4.3%	39	4.0%
Public Administration	15	1.3%	19	1.8%	15	1.6%	31	3.5%	16	1.6%
	521	46.6%	496	46.7%	351	36.7%	382	43.2%	430	44.1%
College of Education & Organizational Leadership										
Child Development	14	1.3%	3	0.3%	22	2.3%	32	3.6%	16	1.6%
Child Development/Life	4	0.4%	0	0.0%	0	0.0%	0	0.0%	0	0.0%
Child Life	0	0.0%	6	0.6%	11	1.2%	13	1.5%	8	0.8%
Educational Management	98	8.8%	93	8.8%	98	10.3%	78	8.8%	74	7.6%
Reading	13	1.2%	25	2.4%	21	2.2%	23	2.6%	33	3.4%
School/Educational Counseling	197	17.6%	144	13.6%	153	16.0%	115	13.0%	177	18.2%
Special Education	0	0.0%	0	0.0%	0	0.0%	4	0.5%	2	0.2%
Special Emphasis	193	17.2%	240	22.6%	210	22.0%	206	23.3%	185	19.0%
Special Emphasis: Adv. Teaching Methods	32	2.9%	7	0.7%	55	5.8%	5	0.6%	0	0.0%
Student Designed Majors	1	0.1%	0	0.0%	0	0.0%	1	0.1%	0	0.0%
	552	49.3%	518	48.8%	570	59.6%	477	54.0%	495	50.8%
Total Masters Degrees Conferred	1119	100%	1061	100%	956	100%	884	100%	974	100%

**C-11: Doctoral Degrees Conferred
2004 - 2008**

Major	2003-2004		2004-2005		2005-2006		2006-2007		2007-2008	
Clinical-Community Psychology (PsyD)	6	10.3%	7	8.6%	15	20.3%	20	22.7%	11	13.1%
Educational/Organizational Leadership/Management (EdD)	36	62.1%	60	74.1%	46	62.2%	58	65.9%	62	73.8%
Public Administration (DPA)	16	27.6%	14	17.3%	13	17.6%	10	11.4%	11	13.1%
Total Doctoral Degrees Conferred	58	100%	81	100%	74	100%	88	100%	84	100%

**C-12: First Professional Degrees Conferred
2004 - 2008**

Major	2003-2004		2004-2005		2005-2006		2006-2007		2007-2008	
Juris Doctor (JD)	21	100%	37	100%	63	100%	62	100%	78	100%
Total Professional Degrees Conferred	21	100%	37	100%	63	100%	62	100%	78	100%

Source: Institutional Research Annual Census on November 15.

D. FACULTY AND STAFF

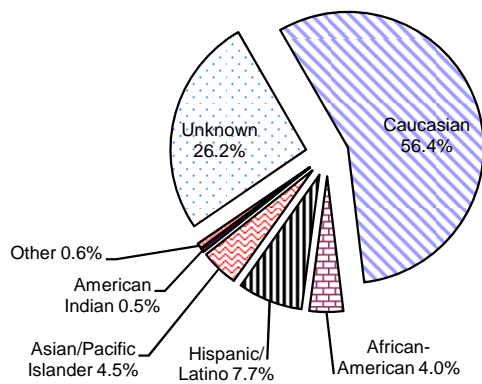
All statistics are based on data from La Verne's census on November 15 for each year specified, unless otherwise noted.

D-1: Gender and Ethnicity of ULV Faculty by Full-Time and Part-Time Status Fall 2008

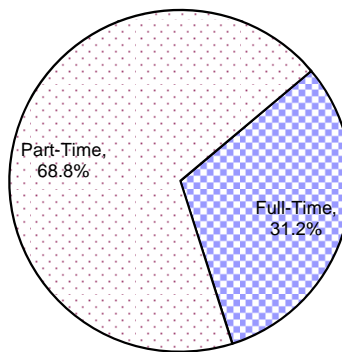
Ethnicity

Faculty	Caucasian		African-American		Hispanic/Latino		Asian/Pacific Islander		American Indian		Other		Ethnicity Unknown		Total	
Full-Time																
Male	75	54.0%	3	50.0%	6	40.0%	8	50.0%	0	0.0%	0	0.0%	8	0.0%	100	51.5%
Female	64	46.0%	3	50.0%	9	60.0%	8	50.0%	1	0.0%	0	0.0%	9	0.0%	94	48.5%
Total	139	100.0%	6	100.0%	15	100.0%	16	100.0%	1	0.0%	0	0.0%	17	0.0%	194	100.0%
Part-Time																
Male	117	55.2%	14	73.7%	19	57.6%	7	58.3%	0	0.0%	1	25.0%	69	47.3%	227	53.0%
Female	95	44.8%	5	26.3%	14	42.4%	5	41.7%	2	100.0%	3	75.0%	73	50.0%	197	46.0%
Unknown	0	0.0%	0	0.0%	0	0.0%	0	0.0%	0	0.0%	0	0.0%	4	2.7%	4	0.9%
Total	212	100.0%	19	100.0%	33	100.0%	12	100.0%	2	100.0%	4	100.0%	146	100.0%	428	100.0%
All U.S. Faculty																
Male	192	54.7%	17	68.0%	25	52.1%	15	53.6%	0	0.0%	1	25.0%	77	47.2%	327	52.6%
Female	159	45.3%	8	32.0%	23	47.9%	13	46.4%	3	100.0%	3	75.0%	82	50.3%	291	46.8%
Unknown	0	0.0%	0	0.0%	0	0.0%	0	0.0%	0	0.0%	0	0.0%	4	2.5%	4	0.6%
Total	351	100.0%	25	100.0%	48	100.0%	28	100.0%	3	100.0%	4	100.0%	163	100.0%	622	100.0%

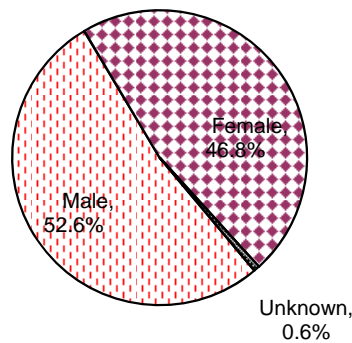
Ethnicity of All Faculty - Fall 2008



Teaching Status of All Faculty - Fall 2008



Gender of All Faculty - Fall 2008



Source: Full-time, Academic Affairs Office (prior to Fall 2006) and Human Resource (Fall 2006 and after); Part-Time, Institutional Research Census on November 15.

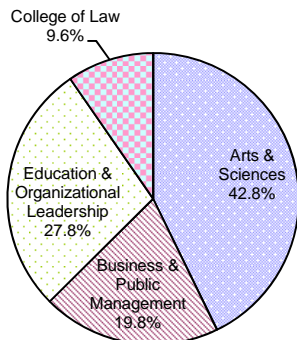
D-2: College and Rank of Full-Time Faculty Fall 2004-Fall 2008

College/School	Rank	Fall 2004		Fall 2005		Fall 2006		Fall 2007		Fall 2008	
College of Arts & Sciences	Professor	41	45.1%	39	42.9%	36	43.4%	37	45.1%	37	46.3%
	Associate Professor	33	36.3%	39	42.9%	31	37.3%	29	35.4%	23	28.8%
	Assistant Professor	17	18.7%	12	13.2%	16	19.3%	16	19.5%	20	25.0%
	Instructor	0	0.0%	1	1.1%	0	0.0%	0	0.0%	0	0.0%
Total		91	100.0%	91	100.0%	83	100.0%	82	100.0%	80	100.0%
College of Business & Public Management	Professor	17	50.0%	17	50.0%	20	57.1%	22	62.9%	23	62.2%
	Associate Professor	6	17.6%	14	41.2%	12	34.3%	9	25.7%	7	18.9%
	Assistant Professor	10	29.4%	3	8.8%	2	5.7%	3	8.6%	6	16.2%
	Visiting Professor	1	2.9%	0	0.0%	1	2.9%	0	0.0%	0	0.0%
	Instructor	0	0.0%	0	0.0%	0	0.0%	1	2.9%	1	2.7%
Total		34	100.0%	34	100.0%	35	100.0%	35	100.0%	37	100.0%
College of Education & Organizational Leadership	Professor	14	35.0%	15	33.3%	16	31.4%	14	26.9%	14	26.9%
	Associate Professor	11	27.5%	12	26.7%	14	27.5%	14	26.9%	16	30.8%
	Assistant Professor	15	37.5%	18	40.0%	21	41.2%	24	46.2%	22	42.3%
Total		40	100.0%	45	100.0%	51	100.0%	52	100.0%	52	100.0%
College of Law	Professor	7	43.8%	8	47.1%	11	64.7%	11	61.1%	10	55.6%
	Associate Professor	5	31.3%	5	29.4%	3	17.6%	3	16.7%	3	16.7%
	Assistant Professor	2	12.5%	2	11.8%	3	17.6%	4	22.2%	5	27.8%
	Visiting Professor	2	12.5%	2	11.8%	0	0.0%	0	0.0%	0	0.0%
Total		16	100.0%	17	100.0%	17	100.0%	18	100.0%	18	100.0%
Wilson Library*	Professor					1	12.5%	0	0.0%	3	42.9%
	Associate Professor					5	62.5%	4	57.1%	0	0.0%
	Assistant Professor					0	0.0%	2	28.6%	3	42.9%
	Instructor					2	25.0%	1	14.3%	1	14.3%
Total						8	100.0%	7	100.0%	7	100.0%
All Colleges & Schools	Professor	79	43.6%	79	42.2%	84	43.3%	84	43.3%	87	44.8%
	Associate Professor	55	30.4%	70	37.4%	65	33.5%	59	30.4%	49	25.3%
	Assistant Professor	44	24.3%	35	18.7%	42	21.6%	49	25.3%	56	28.9%
	Visiting Professor	3	1.7%	2	1.1%	1	0.5%	1	0.5%	1	0.5%
	Instructor	0	0.0%	1	0.5%	2	1.0%	1	0.5%	1	0.5%
Total		181	100.0%	187	100.0%	194	100.0%	194	100.0%	194	100.0%

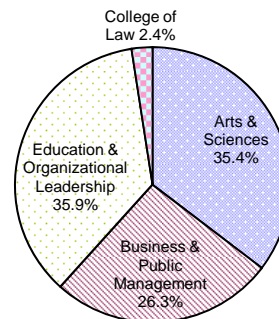
* The faculty of Wilson Library was included in College of Arts & Science before Fall 2006.

Source: Academic Affairs Office (Fall 2002- Fall 2005) and Human Resource (Fall 2006 and after).

Full-Time Faculty by College - Fall 2008



Part-Time Faculty by College - Fall 2008



D-3: Highest Degree of Full-Time Faculty Fall 2004 - Fall 2008

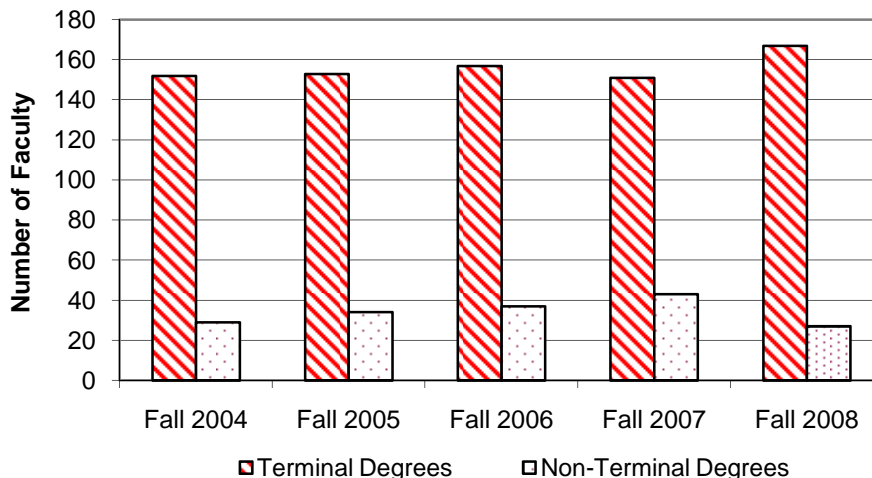
Highest Degree	Fall 2004		Fall 2005		Fall 2006		Fall 2007		Fall 2008	
BA	1	0.6%	1	0.5%	1	0.5%	1	0.5%	0	0.0%
BCL**	0	0.0%	1	0.5%	0	0.0%	0	0.0%	0	0.0%
BS	0	0.0%	0	0.0%	0	0.0%	0	0.0%	0	0.0%
DA	1	0.6%	1	0.5%	1	0.5%	1	0.5%	1	0.5%
DMA*	2	1.1%	2	1.1%	1	0.5%	1	0.5%	1	0.5%
DPA*	2	1.1%	2	1.1%	2	1.0%	2	1.0%	3	1.5%
EdD*	24	13.3%	26	13.9%	25	12.9%	24	12.4%	27	13.9%
JD*	19	10.5%	20	10.7%	22	11.3%	24	12.4%	23	11.9%
LLB*	1	0.6%	1	0.5%	2	1.0%	1	0.5%	0	0.0%
LLM*	1	0.6%	1	0.5%	1	0.5%	0	0.0%	0	0.0%
MA	13	7.2%	15	8.0%	14	7.2%	19	9.8%	14	7.2%
MA* (PEPPIT Criteria)	2	1.1%	2	1.1%	1	0.5%	0	0.0%	3	1.5%
MBA	1	0.6%	1	0.5%	1	0.5%	0	0.0%	1	0.5%
MBA* (PEPPIT Criteria)	2	1.1%	2	1.1%	2	1.0%	3	1.5%	2	1.0%
MEd	1	0.6%	3	1.6%	3	1.5%	3	1.5%	2	1.0%
MEd* (PEPPIT Criteria)	1	0.6%	1	0.5%	1	0.5%	0	0.0%	0	0.0%
MFA*	4	2.2%	4	2.1%	6	3.1%	5	2.6%	5	2.6%
MLA	0	0.0%	0	0.0%	1	0.5%	1	0.5%	0	0.0%
MLIS*	1	0.6%	0	0.0%	0	0.0%	0	0.0%	0	0.0%
MLS	1	0.6%	0	0.0%	1	0.5%	3	1.5%	0	0.0%
MLS* (PEPPIT Criteria)	1	0.6%	1	0.5%	1	0.5%	0	0.0%	0	0.0%
MS	11	6.1%	12	6.4%	14	7.2%	14	7.2%	9	4.6%
MS* (PEPPIT Criteria)	4	2.2%	4	2.1%	1	0.5%	2	1.0%	3	1.5%
MSLS	0	0.0%	0	0.0%	1	0.5%	1	0.5%	0	0.0%
MST*	0	0.0%	0	0.0%	0	0.0%	0	0.0%	0	0.0%
PhD*	88	48.6%	87	46.5%	92	47.4%	89	45.9%	100	51.5%
Total	181	100%	187	100%	194	100%	194	100%	194	100%

***Terminal Degrees** **152** **84.0%** **153** **81.8%** **157** **80.9%** **151** **77.8%** **167** **86.1%**

** Bachelor of Civil Law

Source: Academic Affairs Office (Fall 2002- Fall 2005) and Human Resource (Fall 2006 and after).

**Highest Degree of Full-Time Faculty
Fall 2004 - Fall 2008**

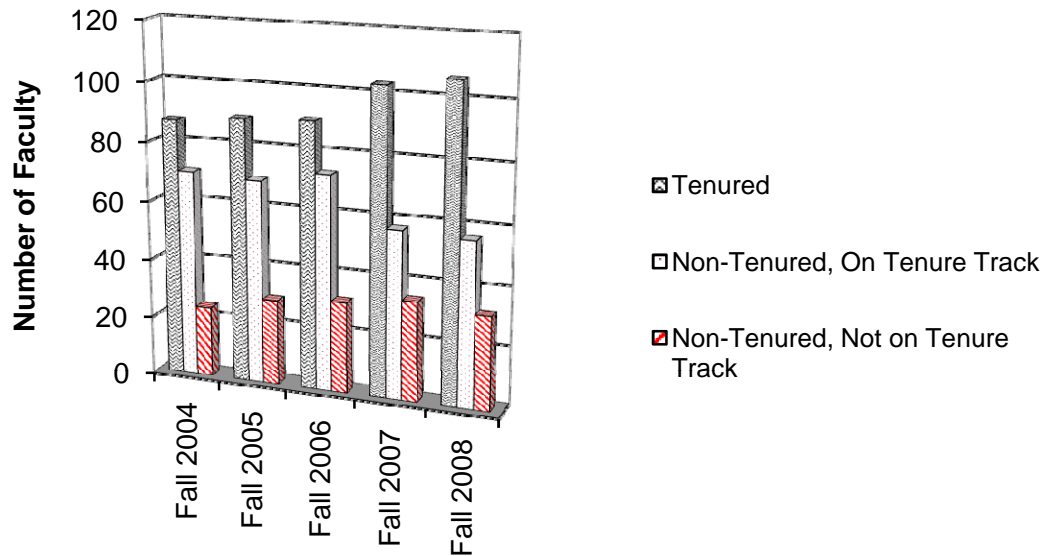


D-4: Tenure Status of Full-Time Faculty Fall 2004 - Fall 2008

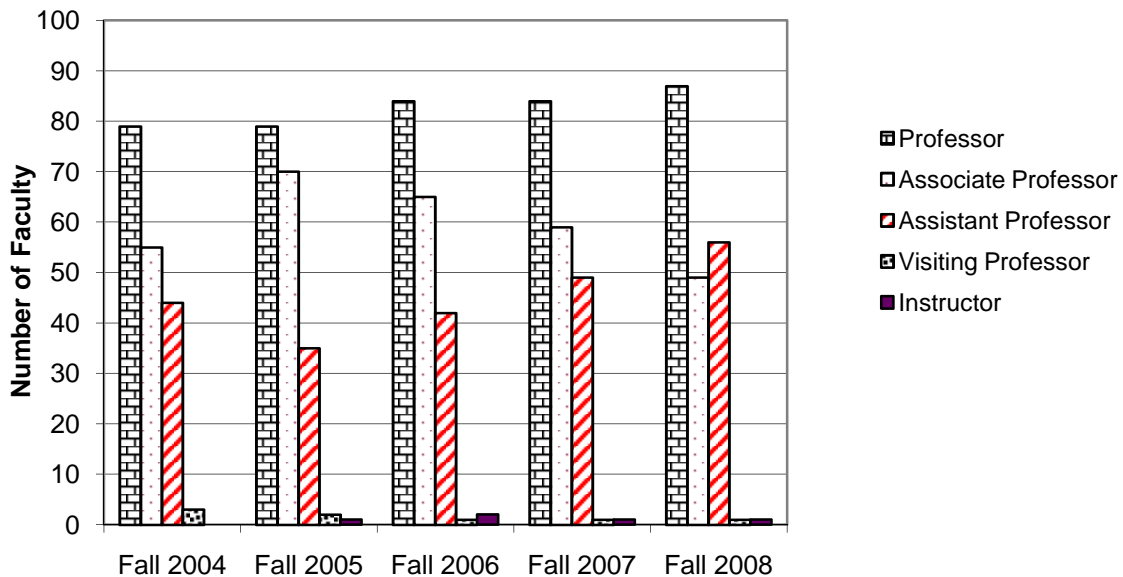
Tenure Status	Fall 2004		Fall 2005		Fall 2006		Fall 2007		Fall 2008	
Tenured	87	48.1%	89	47.6%	90	46.4%	103	53.1%	106	54.6%
Non-Tenured (On Tenure Track)	70	38.7%	69	36.9%	73	37.6%	57	29.4%	56	28.9%
Non-Tenured (Not on Tenure Track)	24	13.3%	29	15.5%	31	16.0%	34	17.5%	32	16.5%
Total	181	100%	187	100%	194	100%	194	100%	194	100%

Source: Academic Affairs Office (Fall 2002- Fall 2005) and Human Resource (Fall 2006 and after).

Tenure Status of Full-Time Faculty



Rank of Full-Time Faculty

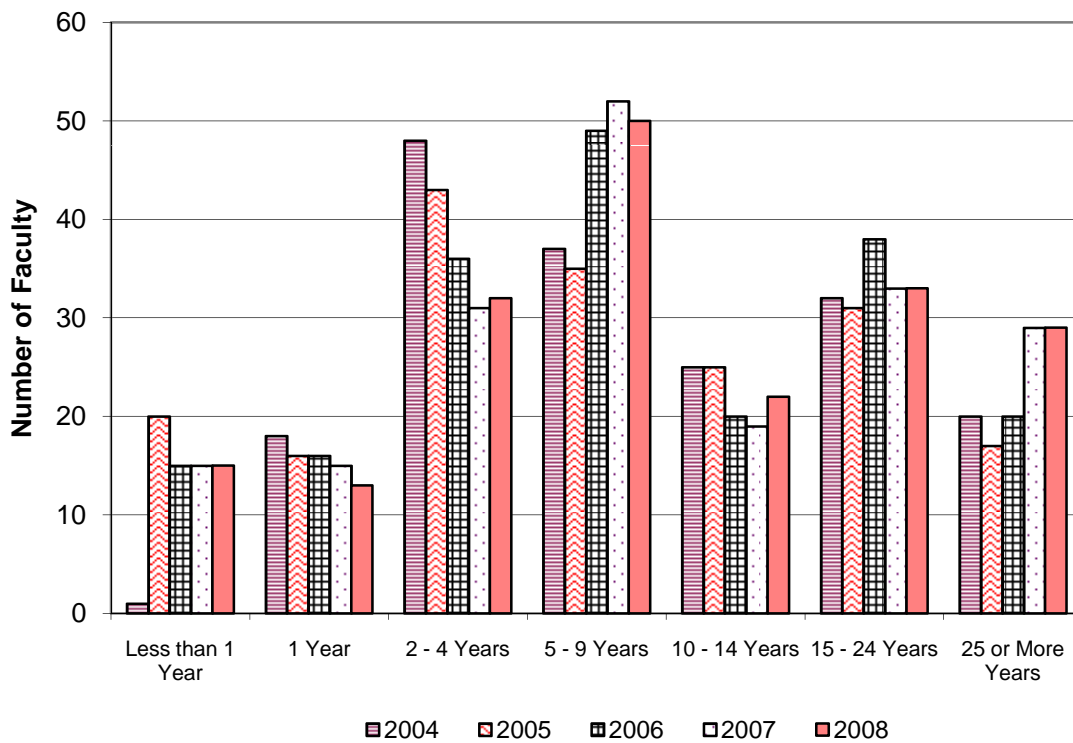


D-5: Years of Service of Full-Time Faculty Fall 2004 - Fall 2008

Years at ULV	2004	2005	2006	2007	2008
Less than 1 Year	1	20	15	15	15
1 Year	18	16	16	15	13
2 - 4 Years	48	43	36	31	32
5 - 9 Years	37	35	49	52	50
10 - 14 Years	25	25	20	19	22
15 - 24 Years	32	31	38	33	33
25 or More Years	20	17	20	29	29
Total Faculty	181	187	194	194	194

Source: Academic Affairs Office (Fall 2003- Fall 2005) and Human Resource (Fall 2006 and after).

Years of Service of Full-Time Faculty
Fall 2004 - Fall 2008



D-6: Gender, Ethnicity, and Appointment Status of Regularly-Contracted Staff by Position - Fall 2008

By Gender and Position

Gender	Administrative/ Professional		Classified		All Positions	
Male	89	38.9%	58	31.5%	147	35.6%
Female	140	61.1%	126	68.5%	266	64.4%
Total	229	100.0%	184	100.0%	413	100.0%

By Ethnicity and Position

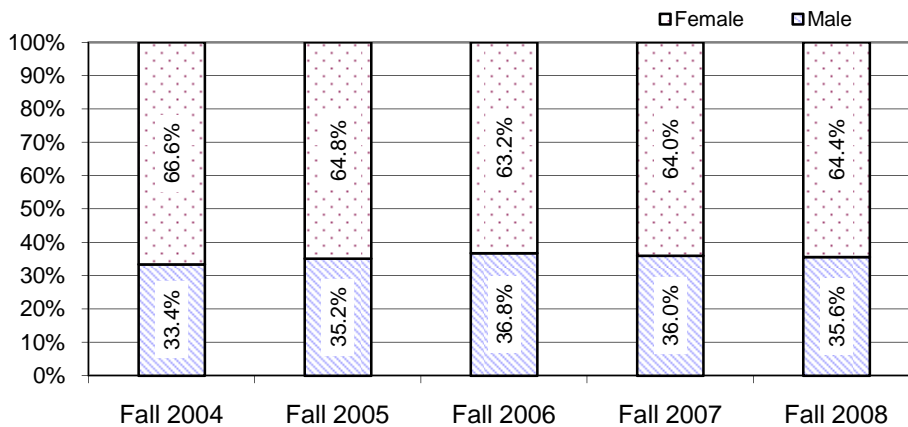
Ethnicity	Administrative/ Professional		Classified		All Positions	
Black, Non-Hispanic	20	8.7%	17	9.2%	37	9.0%
American Indian/Alaskan Native	1	0.4%	2	1.1%	3	0.7%
Asian/Pacific Islander	18	7.9%	17	9.2%	35	8.5%
Hispanic	32	14.0%	58	31.5%	90	21.8%
White, non-Hispanic	143	62.4%	86	46.7%	229	55.4%
Unknown	15	6.6%	4	2.2%	19	4.6%
Total	229	100.0%	184	100.0%	413	100.0%

By Appointment and Position

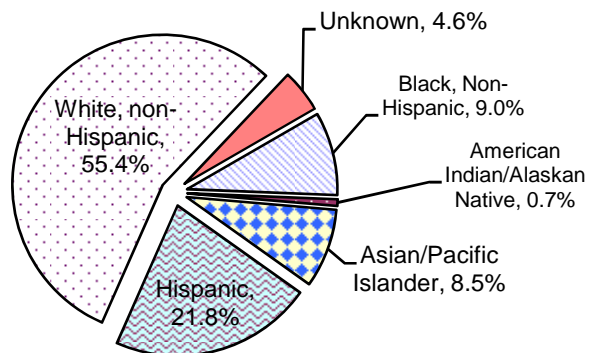
Appointment Status	Administrative/ Professional		Classified		All Positions	
Full-Time	210	91.7%	170	92.4%	380	92.0%
Part-Time	19	8.3%	14	7.6%	33	8.0%
Total Staff	229	100.0%	184	100.0%	413	100.0%

Source: Human Resources

Staff by Gender (Fall 2004 - Fall 2008)



Staff by Ethnicity - Fall 2007



E.
FINANCE
AND
FINANCIAL
AID

E-1: Finances for Fiscal Year 2003-04 through 2007-08

Assets	2003-04	2004-05	2005-06	2006-07	2007-08
Current Assets	60,320,398	64,818,655	78,089,346	92,466,119	114,097,417
Property, plant and equipment:					
Land	6,894,401	8,595,901	8,595,901	8,595,901	8,595,901
Buildings and improvements	47,884,017	49,520,017	54,232,327	61,154,112	61,690,726
Equipment	17,433,187	19,012,448	25,081,342	28,246,055	29,759,977
Asset Retirement capitalized costs			125,727	119,263	113,103
Construction in progress	<u>1,026,038</u>	<u>1,813,678</u>	<u>4,211,422</u>	<u>2,323,249</u>	<u>8,927,229</u>
	73,237,643	78,942,044	92,246,719	100,438,580	109,086,936
Less: Accumulated depreciation	(34,199,909)	(38,289,986)	(42,915,014)	(47,961,127)	(53,123,525)
Total property, plant and equipment	<u>39,037,734</u>	<u>40,652,058</u>	<u>49,331,705</u>	<u>52,477,453</u>	<u>55,963,411</u>
Total assets	\$99,358,132	105,470,713	\$127,421,051	\$144,943,572	170,060,828
Liabilities and Net Assets					
Liabilities	41,019,832	43,487,181	53,273,155	54,887,124	77,735,794
Net Assets	<u>58,338,300</u>	<u>61,983,532</u>	<u>74,147,896</u>	<u>90,056,448</u>	<u>92,325,034</u>
Total liabilities and net assets	\$99,358,132	105,470,713	\$127,421,051	\$144,943,572	170,060,828
Student Grants					
Pell grants	3,404,476	3,949,240	3,612,718	3,382,443	3,640,175
Other federal grants	1,079,653	987,862	857,065	769,219	865,950
State grants	6,585,254	7,685,589	7,985,972	7,443,366	6,783,666
Funded institutional grants	730,651	755,282	720,954	724,667	762,233
Unfunded institutional grants	<u>10,582,620</u>	<u>14,686,639</u>	<u>14,781,382</u>	<u>12,484,694</u>	<u>13,568,637</u>
Total student grants	22,382,654	28,064,612	27,958,091	24,804,389	25,620,661

Source: Audited Financial Statements/General Ledger

E-1: Finances for Fiscal Year 2003-04 through 2007-08 (Continued)

Sources of Funds	2003-04	2004-05	2005-06	2006-07	2007-08
Student tuition and fees	80,736,486	90,463,374	95,726,613	99,500,651	104,913,575
Less: Student financial aid	(12,488,185)	(16,695,746)	(17,096,534)	(16,816,310)	(17,163,069)
Net student tuition and fees	68,288,301	73,767,628	78,630,079	82,684,341	87,750,506
Private gifts and grants	4,618,836	5,190,813	10,321,740	7,465,609	4,037,981
Government grants (Federal and State)	1,232,907	1,355,109	1,114,701	1,002,533	1,276,193
Sponsored programs			413,918	558,787	499,935
Investment income	4,084,049	2,710,215	5,740,783	7,513,977	37,900
Auxiliary enterprises	3,750,005	4,333,370	4,236,733	4,108,151	4,118,527
Annuity and trust gifts	25,000	10,000	103,753	85,000	220,000
Premiums earned			1,088,845	1,503,506	1,330,530
Other	1,131,016	1,271,781	922,880	1,117,382	917,145
Total revenues	83,130,114	88,638,916	102,573,432	106,039,286	100,188,717
Expenses					
Instruction	42,772,144	42,967,152	41,252,341	42,028,834	44,061,791
Academic support	9,140,230	14,961,489	14,074,638	13,175,567	14,753,703
Student services	10,585,736	11,062,904	11,285,116	10,136,019	11,449,342
Institutional support	12,371,895	11,444,907	20,031,591	22,131,662	25,266,906
Auxiliary enterprises	4,496,820	4,557,232	3,765,382	2,658,652	2,388,119
Total expenses	79,366,825	84,993,684	90,409,068	90,130,734	97,919,861
Change in Net Assets	3,763,289	3,645,232	12,164,364	15,908,552	2,268,856
Net assets at beginning of year	54,575,011	58,338,300	61,983,532	74,147,896	90,056,448
Net assets at end of year	58,338,300	61,983,532	\$74,147,896	\$90,056,448	92,325,034

Source: Audited Financial Statements

**E-2: Financial Aid for Traditional-Age Full-Time Students
Fall 2004 - Fall 2008**

Enrolled Students Receiving Aid:

	Fall 2004		Fall 2005		Fall 2006		Fall 2007		Fall 2008	
	Freshmen	Undergrad	Freshmen	Undergrad	Freshmen	Undergrad	Freshmen	Undergrad	Freshmen	Undergrad
a) Number of degree-seeking undergraduate students	375	1546	332	1579	314	1568	334	1590	297	1462
b) Number of students in line a who were financial aid applicants (include applicants for all types of aid)	343	1363	308	1387	289	1366	305	1367	258	1240
c) Number of students in line b who were determined to have financial need	313	1265	282	1306	249	1270	276	1271	240	1165
d) Number of students in line c who received any financial aid	313	1261	282	1304	149	1268	276	1264	239	1159
e) Number of students in line d who received any need-based gift aid	300	1216	233	1192	234	1184	251	1154	213	1061
f) Number of students in line d who received any need-based self-help aid	276	1097	86	356	216	1116	85	332	65	247
g) Number of students in line d who received any non-need-based gift aid	294	1118	239	1168	174	1088	217	1061	185	16
h) Number of students in line d whose need was fully met (exclude PLUS loans, unsubsidized loans, and private alternative loans)	46	245	1	24	18	162	21	147	2	50
i) On average, the percentage of need that was met of students who received any need-based aid. Exclude any resources that were awarded to replace EFC (PLUS loans, unsubsidized loans, and private alternative loans)	80%	78%	70%	72%	64%	68%	50%	52%	50%	50%
j) The average financial aid package of those in line d. Exclude any resources that were awarded to replace EFC (PLUS loans, unsubsidized loans, and private alternative loans)	\$21,985	\$21,604	\$18,403	\$20,636	\$18,223	\$20,615	\$21,072	\$21,629	\$23,526	22535
k) Average need-based gift award of those in line e	\$10,572	\$10,995	\$9,243	\$10,620	\$10,033	\$10,763	\$11,047	\$10,868	\$12,209	\$11,268
l) Average need-based self-help award (excluding PLUS loans, unsubsidized loans, and private alternative loans) of those in line f	\$4,904	\$5,691	\$1,783	\$2,163	\$2,324	\$3,207	\$2,928	\$2,836	\$3,292	\$3,100
m) Average need-based loan (excluding PLUS loans, unsubsidized loans, and private alternative loans) of those in line f who received a need-based loan	\$2,907	\$3,442	\$4,417	\$4,637	\$2,445	\$3,447	\$4,668	\$5,268	\$4,798	\$5,428

Number of Enrolled Students Receiving Non-Need-Based Grants and Scholarships:

n) Number of students in line a who had no financial need and who received non-need-based gift aid (exclude those receiving athletic awards and tuition benefits)	49	202	42	211	66	384	40	217	30	183
o) Average dollar amount of non-need-based gift aid awarded to students in line n	\$9,204	\$7,716	\$8,988	\$7,929	\$8,890	\$6,792	\$9,400	\$7,954	\$11,333	\$8,489
p) Number of students in line a who received a non-need-based athletic grant or scholarship**	0	0	0	0	0	0	0	0	0	0
q) Average dollar amount of non-need-based athletic grants and scholarships awarded to students in line p	0	0	0	0	0	0	0	0	0	0

* "Freshmen" is for "First-Time Full-Time Freshmen", and "Undergrad" is for "Full-time Undergraduate, including Freshmen".

** The University does not grant non-need-based athletic grant or scholarship.

Source: Common Data Set; Financial Aid Office.