



Knowledge • Service • Vision

Fact Book 2003 – 2007

OFFICE OF INSTITUTIONAL RESEARCH, UNIVERSITY OF LA VERNE

UNIVERSITY OF LA VERNE FACT BOOK 2003-2007
7th Edition, January 2008

Editor:

Yingxia Cao, Director of Institutional Research
Office of Institutional Research, Academic Affairs
University of La Verne
La Verne, CA 91750
Tel: (909) 593-3511 ext. 4235
Fax: (909) 392-2709
Email: ycao@ulv.edu

Contributors:

Mark Nelson, Assistant Provost, Academic Affairs
Alfred Clark, Associate Vice President, Academic Affairs
James Schirmer, Senior Research Associate, Academic Affairs
Brett Schmitt, Program Analyst, Human Resource Department
James S. Irwin, Financial Operations Manager, Accounting Department
Fernando Ramos, Assistant Director, Financial Aid Office
Carolyn Monell, Student Assistant, Department of Mathematics

This book is intended as a reference for the ULV Community and may be quoted, without permission, using acceptable citation guidelines. Reproduction of complete tables, figures, or text must include a “University of La Verne Fact Book 2003-2007” notation and page number.

Information contained in the Fact Book is based on annual census data generated from the Banner student record system on November 15 and from various University offices. If you would like more information about the data, please contact the Office of Institutional Research. All information contained in this book is also available at the website of the Office of Institutional Research: <http://www.ulv.edu/ir/reports/factbooks/>.

TABLE OF CONTENTS

A. STUDENTS

A-1: Unduplicated Student Headcount by Campus/Program	1
A-2: Unduplicated Undergraduate Student Headcount by Major	2
A-3 to A-5: Unduplicated Graduate Student Headcount by Major	3
A-6: Unduplicated Student Headcount by Level, Major, and Campus – The College of Arts & Sciences	4
A-7: Unduplicated Student Headcount by Level, Major, and Campus - The College of Business & Public Management	5
A-8: Unduplicated Student Headcount by Level, Major, and Campus - The College of Education & Organizational Leadership	6
A-9: Student Registrations by Campus/Program	7
A-10: Student Full-Time Equivalent (FTE) by Campus/Program	8
A-11: Undergraduate Student FTE by Major	9
A-12 to A-14: Graduate Student FTE by Major	10
A-15: Change in Student FTE by Campus/Program and by College	11
A-16: Student Classification and Enrollment Status	12
A-17: Student Ethnicity and Gender	13
A-18: Student Age by Campus/Program and by Class	14
A-19: International Student	15

B. ADMISSIONS AND NEW STUDENTS

B-1 to B-2: Admission Statistics of Main Campus First-Time Traditional-Age Freshmen	16-17
B-3: Gender of New Main Campus Traditional-Age Freshman and Transfer Students ...	18
B-4: Ethnicity of New Main Campus Traditional-Age Freshman and Transfer Students	19
B-5: New Main Campus Traditional-Age Freshman SAT Scores	20
B-6: Entrance GPA of New Main Campus Traditional-Age Freshmen and Transfers.....	21
B-7: Top 15 High School Origins of New Main Campus Traditional-Age Freshmen...	22
B-8: Top 15 College Origins of New Main Campus Traditional-Age Transfers...	22
B-9: New Main Campus Traditional-Age Students by Geographic Region	23
B-10: New Main Campus Traditional-Age International Students by Geographic Region	24
B-11: New Main Campus Traditional-Age Freshmen by Major	25
B-12: New Main Campus Traditional-Age Transfers by Major	26
B-13: New RCA (Regional Campus Administration) Undergraduate Enrollment by Gender and Ethnicity	27

B-14: New RCA Undergraduate Enrollment by Major	28
B-15: Application, Acceptance, and Enrollment Statistics for the College of Law	29
B-16: New Main Campus Masters Students by Major/Credential	30
B-17: New Doctoral Students by Major/Credential	30
B-18: New RCA Masters Students by Major/Credential	31

C. PERFORMANCE INDICATORS

C-1: Student GPA by Level	32
C-2: Retention Rates for First-Time Full-Time Traditional-Age Freshman Cohort	33
C-3: Graduation Rates for First-Time Full-Time Traditional-Age Freshman (GRS) Cohort	33
C-4: The First Fall-to-Fall (First-Year) Retention Rates for Main Campus First-Time Full-Time Freshman Cohort by Ethnicity	34
C-5: Graduation Rates for Main Campus First-Time Freshman Cohort by Ethnicity	34
C-6: Retention Rates for Main Campus Full-Time Undergraduate Transfer Students	35
C-7: Graduation Rates for Main Campus Full-Time Undergraduate Transfer Students	35
C-8: Conferred Degrees for All Students by Type and by College	36
C-9: Conferred Bachelors Degrees	37
C-10: Conferred Graduate Degrees	38
C-11: Conferred Doctoral Degrees	38
C-12: Conferred Professional Doctoral Degrees	38

D. FACULTY AND STAFF

D-1: Gender and Ethnicity of All ULV Faculty	39
D-2: College and Rank of Full-Time Faculty	40
D-3: Highest Degrees of Full-Time Faculty	41
D-4: Tenure Status of Full-Time Faculty	42
D-5: Years of Service of Full-Time Faculty	43
D-6: Gender, Ethnicity, and Appointment for Staff by Position	44

E. FINANCE & FINANCIAL AID

E-1: Fiscal Year Finances	45-46
E-2: Financial Aid for Traditional-Age Students	47

A. STUDENTS

All statistics are based on data from ULV's census on November 15 for each year specified, unless otherwise noted.

**A-1: Unduplicated Student Headcount by Campus/Program
Fall 2003 - Fall 2007**

Main Campus Programs	Fall 2003		Fall 2004		Fall 2005		Fall 2006		Fall 2007	
Main Campus Undergraduate	1396	17.5%	1655	20.8%	1721	21.7%	1685	22.5%	1683	22.8%
Main Campus Graduate	1431	17.9%	1560	19.6%	1505	18.9%	1480	19.8%	1533	20.8%
DPA	106	1.3%	111	1.4%	108	1.4%	105	1.4%	95	1.3%
EdD	377	4.7%	405	5.1%	340	4.3%	341	4.6%	291	3.9%
PASC	12	0.2%	1	0.0%	2	0.0%	2	0.0%	1	0.0%
Law	195	2.4%	221	2.8%	255	3.2%	263	3.5%	306	4.2%
	3517	44.0%	3953	49.6%	3931	49.5%	3876	51.8%	3909	53.0%
Regional Campus Administration (RCA)										
CAPA	787	9.8%	839	10.5%	817	10.3%	756	10.1%	695	9.4%
Education	527	6.6%	545	6.8%	574	7.2%	509	6.8%	454	6.2%
ULV Online	52	0.7%	104	1.3%	162	2.0%	216	2.9%	242	3.3%
Teacher Credential (RCA Ed.)	135	1.7%	158	2.0%	143	1.8%	164	2.2%	162	2.2%
	1501	18.8%	1646	20.7%	1696	21.3%	1645	22.0%	1553	21.1%
Regional Campuses										
Bakersfield Credential***	91	1.1%	85	1.1%	134	1.7%	110	1.5%	95	1.3%
Central Coast	95	1.2%	101	1.3%	124	1.6%	86	1.1%	94	1.3%
High Desert Victorville	85	1.1%	147	1.8%	145	1.8%	128	1.7%	108	1.5%
Inland Empire	330	4.1%	293	3.7%	284	3.6%	275	3.7%	310	4.2%
Kern County/Bakersfield	191	2.4%	165	2.1%	168	2.1%	157	2.1%	187	2.5%
Orange County	481	6.0%	414	5.2%	386	4.9%	336	4.5%	316	4.3%
San Fernando Valley	412	5.2%	439	5.5%	395	5.0%	362	4.8%	320	4.3%
Ventura County	144	1.8%	173	2.2%	179	2.3%	130	1.7%	111	1.5%
	1829	22.9%	1817	22.8%	1815	22.8%	1584	21.2%	1541	20.9%
Regional Campuses on Military Bases										
Eielson/Ft. Wainwright	5	0.1%	0	0.0%	0	0.0%	0	0.0%	0	0.0%
Elmendorf	51	0.6%	0	0.0%	0	0.0%	0	0.0%	0	0.0%
Point Mugu	244	3.1%	308	3.9%	266	3.3%	283	3.8%	257	3.5%
Vandenberg	96	1.2%	73	0.9%	62	0.8%	62	0.8%	59	0.8%
	396	5.0%	381	4.8%	328	4.1%	345	4.6%	316	4.3%
Other Programs										
Ecumenical Centers (ABTC/ECBCS)	40	0.5%	45	0.6%	50	0.6%	36	0.5%	29	0.4%
EPIC	36**	0.5%	34	0.4%	28	0.4%	0	0.0%	24	0.3%
	76	1.0%	79	1.0%	78	1.0%	36	0.5%	53	0.7%
Special Programs										
Cal Poly CLAD	62	0.8%	93	1.2%	92	1.2%	0	0.0%	0	0.0%
	62	0.8%	93	1.2%	92	1.2%	0	0.0%	0	0.0%
Overseas Campuses/Programs										
Athens*	608**	7.6%	0	0.0%	0	0.0%	0	0.0%	0	0.0%
	608	7.6%	0	0.0%	0	0.0%	0	0.0%	0	0.0%
Campus not Designated	2	0.0%	0	0.0%	9	0.1%	1	0.0%	0	0.0%
Enrollment Total	7991	100.0%	7969	100.0%	7949	100.0%	7487	100.0%	7372	100.0%
Professional Development/Travel Learning	297	3.6%	356	4.3%	375	4.5%	841	10.1%	1029	12.2%
Enrollment Grand Total	8288	100.0%	8325	100.0%	8324	100.0%	8328	100.0%	8401	100.0%

* Athens Campus was closed after Summer 2004. Thereafter, its students thereafter are classified under "Main Campus" since the 5th edition.

** End of Term enrollment figures; census day figures unavailable.

*** Bakersfield was formally under Main Campus Programs, but has been reported under Regional Campus Administration since this edition.

Source: Institutional Research Annual Census on November 15.

**A-2: Unduplicated Undergraduate Headcount by Major at all ULV Campuses
Fall 2003 - Fall 2007**

Major	Fall 2003		Fall 2004		Fall 2005		Fall 2006		Fall 2007	
College of Arts & Sciences										
Athletic Training	18	0.5%	30	0.7%	43	1.0%	41	1.0%	35	0.9%
Anthropology	8	0.2%	10	0.2%	9	0.2%	8	0.2%	12	0.3%
Art	25	0.6%	32	0.7%	28	0.6%	25	0.6%	35	0.9%
Art History	1	0.0%	4	0.1%	5	0.1%	11	0.3%	9	0.2%
Behavioral Science	46	1.2%	58	1.3%	35	0.8%	34	0.8%	32	0.8%
Biology	58	1.5%	84	1.9%	96	2.2%	115	2.8%	97	2.4%
Broadcasting	39	1.0%	37	0.8%	46	1.1%	46	1.1%	40	1.0%
Chemistry	23	0.6%	24	0.6%	28	0.6%	30	0.7%	27	0.7%
Communications	75	1.9%	85	2.0%	84	1.9%	87	2.1%	90	2.3%
Comparative Literature	1	0.0%	1	0.0%	0	0.0%	2	0.0%	1	0.0%
Computer Science & Engineering	68	1.8%	56	1.3%	45	1.0%	46	1.1%	37	0.9%
Criminology	139	3.6%	196	4.5%	180	4.1%	172	4.2%	174	4.4%
English	62	1.6%	78	1.8%	76	1.7%	68	1.7%	59	1.5%
Environmental Biology	2	0.1%	4	0.1%	1	0.0%	3	0.1%	6	0.2%
Environmental Management	0	0.0%	1	0.0%	1	0.0%	1	0.0%	0	0.0%
French	1	0.0%	0	0.0%	1	0.0%	1	0.0%	1	0.0%
General Studies (AA)	1	0.0%	0	0.0%	12	0.3%	0	0.0%	16	0.4%
German	0	0.0%	1	0.0%	0	0.0%	0	0.0%	1	0.0%
History	21	0.5%	43	1.0%	40	0.9%	39	1.0%	35	0.9%
International Business & Language	21	0.5%	15	0.3%	22	0.5%	21	0.5%	21	0.5%
International Studies	2	0.1%	5	0.1%	5	0.1%	3	0.1%	3	0.1%
Journalism	34	0.9%	42	1.0%	43	1.0%	43	1.0%	39	1.0%
Legal Studies/Paralegal Studies	58	1.5%	83	1.9%	92	2.1%	92	2.2%	84	2.1%
Liberal Arts	7	0.2%	15	0.3%	18	0.4%	12	0.3%	13	0.3%
Mathematics	25	0.6%	25	0.6%	23	0.5%	24	0.6%	20	0.5%
Movement & Sports Science/Phys Ed	74	1.9%	66	1.5%	66	1.5%	64	1.6%	66	1.7%
Music	14	0.4%	16	0.4%	13	0.3%	9	0.2%	9	0.2%
Natural History/Science	0	0.0%	2	0.0%	0	0.0%	0	0.0%	0	0.0%
Philosophy	9	0.2%	10	0.2%	6	0.1%	8	0.2%	13	0.3%
Physics	5	0.1%	5	0.1%	7	0.2%	6	0.1%	6	0.2%
Political Science	42	1.1%	55	1.3%	52	1.2%	54	1.3%	57	1.4%
Psychology	223	5.8%	263	6.0%	248	5.7%	257	6.3%	234	5.9%
Religion	12	0.3%	8	0.2%	5	0.1%	6	0.1%	9	0.2%
Religion & Philosophy	6	0.2%	5	0.1%	1	0.0%	8	0.2%	9	0.2%
Social Science	21	0.5%	22	0.5%	18	0.4%	18	0.4%	15	0.4%
Sociology	51	1.3%	70	1.6%	79	1.8%	75	1.8%	76	1.9%
Spanish	7	0.2%	7	0.2%	14	0.3%	16	0.4%	12	0.3%
Speech Communication	9	0.2%	12	0.3%	22	0.5%	35	0.9%	31	0.8%
Theatre Arts	16	0.4%	22	0.5%	28	0.6%	26	0.6%	22	0.6%
Student Designed Majors	1	0.0%	3	0.1%	2	0.0%	1	0.0%	3	0.1%
	1225	31.8%	1495	34.3%	1494	34.2%	1507	36.8%	1449	36.3%
College of Business & Public Management										
Accounting	64	1.7%	61	1.4%	66	1.5%	56	1.4%	70	1.8%
Business Administration	848	22.0%	884	20.3%	854	19.6%	791	19.3%	804	20.1%
Business Management	1	0.0%	0	0.0%	4	0.1%	62	1.5%	64	1.6%
E-Commerce	1	0.0%	4	0.1%	11	0.3%	6	0.1%	4	0.1%
Economics	8	0.2%	7	0.2%	9	0.2%	7	0.2%	12	0.3%
Health Administration	81	2.1%	68	1.6%	51	1.2%	36	0.9%	24	0.6%
Marketing	15	0.4%	19	0.4%	20	0.5%	9	0.2%	2	0.1%
Organizational Management	593	15.4%	577	13.3%	541	12.4%	493	12.0%	486	12.2%
Public Administration	85	2.2%	92	2.1%	90	2.1%	85	2.1%	96	2.4%
Student Designed Majors	5	0.1%	7	0.2%	3	0.1%	1	0.0%	0	0.0%
	1696	44.0%	1712	39.3%	1649	37.8%	1546	37.7%	1562	39.1%
College of Education & Organizational Leaders										
Child Development	240	6.2%	374	8.6%	426	9.8%	414	10.1%	358	9.0%
Diversified Education/Liberal Studies	473	12.3%	468	10.7%	543	12.4%	491	12.0%	478	12.0%
Multiple Subject (Credential)	0	0.0%	12	0.3%	7	0.2%	6	0.1%	6	0.2%
Single Subject (Credential)	0	0.0%	1	0.0%	3	0.1%	5	0.1%	1	0.0%
	713	18.5%	855	19.6%	979	22.4%	916	22.3%	843	21.1%
Major not declared	223	5.8%	292	6.7%	245	5.6%	130	3.2%	141	3.5%
Total Undergraduate Majors	3857	100.0%	4354	100.0%	4367	100.0%	4099	100.0%	3995	100.0%

Source: Institutional Research Annual Census on November 15.

**A-3: Unduplicated Masters Student Headcount by Major/Credential at All ULV Campuses
Fall 2003 - Fall 2007**

Major	Fall 2003		Fall 2004		Fall 2005		Fall 2006		Fall 2007	
College of Arts & Sciences										
Counseling (Concentration/Special Emphasis)	2	0.1%	25	0.8%	29	0.9%	24	0.7%	27	1.0%
Marriage & Family Therapy (MFT)	46	1.5%	76	2.4%	80	2.5%	81	2.3%	69	2.6%
Student Designed Major	1	0.0%	0	0.0%	0	0.0%	0	0.0%	0	0.0%
	49	1.6%	101	3.3%	109	3.4%	105	3.0%	96	3.7%
College of Business & Public Management										
Business Administration	725	24.2%	668	21.5%	697	21.9%	727	21.0%	795	30.4%
Business Information Technology	12	0.4%	12	0.4%	5	0.2%	6	0.2%	6	0.2%
Business Organizational Management	67	2.2%	36	1.2%	27	0.8%	34	1.0%	26	1.0%
Gerontology	29	1.0%	32	1.0%	34	1.1%	38	1.1%	35	1.3%
Health Services Administration	56	1.9%	55	1.8%	40	1.3%	33	1.0%	43	1.6%
Leadership & Management*	99	3.3%	94	3.0%	84	2.6%	90	2.6%	95	3.6%
Public Administration	39	1.3%	51	1.6%	61	1.9%	62	1.8%	69	2.6%
Student Designed Major	0	0.0%	0	0.0%	1	0.0%	0	0.0%	1	0.0%
	1027	34.3%	948	30.5%	948	29.8%	990	28.7%	1070	40.9%
College of Education & Organizational Leadership										
Child Development	49	1.6%	45	1.4%	76	2.4%	63	1.8%	21	0.8%
Child Life	19	0.6%	21	0.7%	25	0.8%	25	0.7%	43	1.6%
Educational Management	183	6.1%	175	5.6%	179	5.6%	152	4.4%	70	2.7%
Multiple Subject (Credential)	320	10.7%	244	7.9%	269	8.5%	231	6.7%	217	8.3%
Preliminary Administrative Services (Credential)	42	1.4%	35	1.1%	34	1.1%	21	0.6%	10	0.4%
Pupil Personnel Services (Credential)	7	0.2%	6	0.2%	3	0.1%	5	0.1%	12	0.5%
Reading	60	2.0%	82	2.6%	63	2.0%	63	1.8%	46	1.8%
School/Educational Counseling	302	10.1%	310	10.0%	363	11.4%	407	11.8%	481	18.4%
Single Subject (Credential)	215	7.2%	180	5.8%	165	5.2%	124	3.6%	124	4.7%
Special Education	27	0.9%	41	1.3%	42	1.3%	41	1.2%	46	1.8%
Special Emphasis	213	7.1%	413	13.3%	346	10.9%	367	10.6%	307	11.8%
Special Emphasis: Advanced Teaching Methods	24	0.8%	40	1.3%	44	1.4%	0	0.0%	0	0.0%
Student Designed Majors	0	0.0%	0	0.0%	0	0.0%	0	0.0%	2	200.0%
	1461	48.8%	1592	51.3%	1609	50.5%	1499	43.4%	1379	252.7%
Major not Declared**	456	15.2%	463	14.9%	517	16.2%	861	24.9%	67	2.6%
Total Masters Majors	2993	100%	3104	100%	3183	100%	3455	100%	2612	300%

**A-4: Unduplicated Doctoral Student Headcount by Major/Credential at All ULV Campuses
Fall 2003 - Fall 2007**

Major	Fall 2003		Fall 2004		Fall 2005		Fall 2006		Fall 2007	
Clinical-Community Psychology (PsyD)	52	9.5%	60	10.4%	67	12.9%	61	11.9%	69	15.1%
Educational/Organizational Leadership/Management (EdD)	356	65.1%	373	64.6%	329	63.5%	340	66.5%	290	63.5%
Professional Administrative Services (Credential)	12	2.2%	1	0.2%	2	0.4%	2	0.4%	1	0.2%
Public Administration (DPA)	105	19.2%	111	19.2%	109	21.0%	106	20.7%	96	21.0%
	525	96.0%	545	94.5%	507	97.9%	509	99.6%	456	99.8%
Major not Declared	22	4.0%	32	5.5%	11	2.1%	2	0.4%	1	0.2%
Total Doctoral Majors	547	100%	577	100%	518	100%	511	100%	457	100%

**A-5: Unduplicated First Professional Student Headcount by Major at All ULV Campus
Fall 2003 - Fall 2007**

Major	Fall 2003		Fall 2004		Fall 2005		Fall 2006		Fall 2007	
First Professional (JD)	195	100.0%	221	100.0%	255	100.0%	263	100.0%	306	100.0%
Total First Professional Majors	195	100.0%	221	100.0%	255	100.0%	263	100.0%	306	100.0%

* Leadership & Management was organized under the College of Education & Organizational Leadership since the 5th edition of this Fact Book.

** Non-degree professional development students are not included.

Source: Institutional Research Annual Census on November 15.

A-6: Unduplicated Student Headcount by Level, Major, and Campus*
College of Arts and Science - Fall 2007

MAJOR	Main Campus	CAPA	Ecumenical Centers	ULV Online	Inland Empire Campus	Point Mugu Center	EPIC
Undergraduate							
Anthropology	9	3	0	0	0	0	0
Art	28	7	0	0	0	0	0
Art History	5	4	0	0	0	0	0
Athletic Training	35	0	0	0	0	0	0
Behavioral Science	9	23	0	0	0	0	0
Biology	93	4	0	0	0	0	0
Broadcasting	35	5	0	0	0	0	0
Chemistry	24	3	0	0	0	0	0
Communications	88	2	0	0	0	0	0
Comparative Literature	1	0	0	0	0	0	0
Computer Sci & Engineering	22	14	0	0	0	0	0
Creative Writing	3	0	0	0	0	0	0
Criminology	82	23	0	16	0	53	0
English	39	20	0	0	0	0	0
Environmental Biology	6	0	0	0	0	0	0
French	1	0	0	0	0	0	0
General Studies	0	0	0	0	0	0	16
German	1	0	0	0	0	0	0
History	28	7	0	0	0	0	0
International Studies	3	0	0	0	0	0	0
Intl Business & Language	21	0	0	0	0	0	0
Journalism	38	1	0	0	0	0	0
Legal Studies	24	53	0	0	0	0	0
Liberal Arts	12	1	0	0	0	0	0
Mathematics	17	3	0	0	0	0	0
Movement&Sports Science	58	8	0	0	0	0	0
Music	7	1	0	0	0	0	0
Music Education	1	0	0	0	0	0	0
Paralegal Studies	6	1	0	0	0	0	0
Philosophy	13	0	0	0	0	0	0
Physics	6	0	0	0	0	0	0
Political Science	54	3	0	0	0	0	0
Psychology	159	48	3	0	0	23	0
Religion	3	1	5	0	0	0	0
Religion&Philosophy	4	1	4	0	0	0	0
Social Science	9	6	0	0	0	0	0
Sociology	42	34	0	0	0	0	0
Spanish	11	1	0	0	0	0	0
Speech Communications	29	2	0	0	0	0	0
Theatre	22	0	0	0	0	0	0
Major Not Declared	107	3	17	0	1	0	8
	1155	282	29	16	1	76	24
Masters							
Counseling	27	0	0	0	0	0	0
Coun/Marriage&Family Therapy	1	0	0	0	0	0	0
Counseling (MFCC)	1	0	0	0	0	0	0
Marriage and Family Therapy	22	0	0	0	0	0	0
Marriage Family Therapy	45	0	0	0	0	0	0
Major Not Declared	3	0	0	0	0	0	0
Total Master's Level Students	99	0	0	0	0	0	0
Doctoral							
Clinical-Community Psychology	69	0	0	0	0	0	0
Grand Total	1323	282	29	16	1	76	24

* Non-degree professional development students are not included.

Source: Institutional Research Annual Census on November 15.

**A-7: Unduplicated Student Headcount by Level, Major, and Campus
College of Business and Public Management - Fall 2007**

MAJOR	Main Campus	DPA	CAPA	ULV On-Line	Central Coast Campus	High Desert Victorville Campus	Inland Empire Campus	Kern County Campus	Orange County Campus	Point Mugu Campus	San Fernando Valley Campus	Vandenberg Campus	Ventura County Campus
Undergraduate													
Accounting	37	0	33	0	0	0	0	0	0	0	0	0	0
Applied Management	0	0	0	0	0	0	0	0	0	0	0	0	0
Business Administration	283	0	108	1	1	22	85	23	103	49	95	14	15
Business Management	0	0	4	0	0	8	36	0	15	0	1	0	0
Economics	12	0	0	0	0	0	0	0	0	0	0	0	0
E-Commerce	2	2	0	0	0	0	0	0	0	0	0	0	0
Health Administration	1	0	0	0	0	0	20	0	0	0	2	0	1
Marketing	2	0	0	0	0	0	0	0	0	0	0	0	0
Organizational Management	3	0	97	115	1	10	40	31	39	104	20	9	17
Public Administration	6	0	31	41	0	0	8	0	2	0	0	1	7
Major Not Declared	0	0	1	0	0	1	0	0	0	0	0	1	0
	346	2	274	157	2	41	189	54	159	153	118	25	40
Masters													
Business Administration	430	0	0	69	13	15	43	6	80	0	89	32	18
Business Information Tech	6	0	0	0	0	0	0	0	0	0	0	0	0
Business Organizational Mgmt	0	0	0	0	0	0	0	0	0	26	0	0	0
Gerontology	29	0	0	0	0	0	0	0	0	0	0	0	6
Health Administration	36	0	0	0	0	0	1	0	0	0	1	0	0
Healthcare Administration	0	0	0	0	0	0	0	0	0	0	0	0	0
Leadership & Management	66	0	0	0	0	0	22	0	1	0	1	1	4
Public Administration	60	0	0	0	0	0	0	0	9	0	0	0	0
Student Designed	3	0	0	0	0	0	0	0	9	0	0	0	0
Major Not Declared	10	0	0	0	0	0	1	0	2	0	0	0	0
	640	0	0	69	13	15	67	6	101	26	91	33	28
Doctoral													
Public Administration	1	95	0	0	0	0	0	0	0	0	0	0	0
Grand Total	987	97	274	226	15	56	256	60	260	179	209	58	68

* Non-degree professional development students are not included.

Source: Institutional Research Annual Census on November 15.

A-8: Unduplicated Student Headcount by Level, Major, and Campus*
College of Education and Organizational Leadership - Fall 2007

MAJOR	Main Campus	EdD	PASC II**	Bakersfield Teacher Education	CAPA	Central Coast Campus	High Desert Victorville Campus	Inland Empire Campus	Kern County Campus	Orange County Campus	RCA Education	RCA Teacher Education	San Fernando Valley Campus	Ventura County Campus
Undergraduate														
Child Development	24	0	0	0	46	47	12	38	0	65	0	0	94	32
Liberal Studies	145	0	0	0	91	32	40	15	127	0	0	0	17	11
Multiple Subject	3	0	0	1	0	0	0	0	0	0	0	2	0	0
Single Subject	1	0	0	0	0	0	0	0	0	0	0	0	0	0
	173	0	0	1	137	79	52	53	127	65	0	2	111	43
Masters														
Child Development	21	0	0	0	0	0	0	0	0	0	0	0	0	0
Child Life	43	0	0	0	0	0	0	0	0	0	0	0	0	0
Educational Counseling	105	0	0	0	0	0	0	0	0	0	343	0	0	0
Educational Management	19	0	0	0	0	0	0	0	0	0	51	0	0	0
Mild/Mod Educ Specialist Lvl II	2	0	0	0	0	0	0	0	0	0	0	0	0	0
Multiple Subject	135	0	0	38	0	0	0	0	0	0	0	44	0	0
Preliminary Admin Services	7	0	0	0	0	0	0	0	0	0	3	0	0	0
Pupil Personnel Services	2	0	0	0	0	0	0	0	0	0	10	0	0	0
Reading	38	0	0	0	0	0	0	0	0	0	8	0	0	0
School Counseling	1	0	0	0	0	0	0	0	0	0	4	0	0	0
School Psychology	28	0	0	0	0	0	0	0	0	0	0	0	0	0
Single Subject	76	0	0	20	0	0	0	0	0	0	1	27	0	0
Special Education	34	0	0	10	0	0	0	0	0	0	0	0	0	0
Special Emphasis	194	0	0	25	0	0	0	0	0	0	2	86	0	0
Major Not Declared	12	0	0	1	0	0	0	0	0	0	32	3	0	0
	717	0	0	94	0	0	0	0	0	0	454	160	0	0
Doctoral														
Educational Leadership	0	30	0	0	0	0	0	0	0	0	0	0	0	0
Organizational Leadership	0	260	0	0	0	0	0	0	0	0	0	0	0	0
Professional Admin Services	0	0	1	0	0	0	0	0	0	0	0	0	0	0
Major Not Declared	0	1	0	0	0	0	0	0	0	0	0	0	0	0
	0	291	1	0	0	0	0	0	0	0	0	0	0	0
Grand Total	890	291	1	95	137	79	52	53	127	65	454	162	111	43

* Non-degree professional development students are not included.

** Professional Administrative Services Credential Program (EdD).

Source: Institutional Research Annual Census on November 15.

A-9: Student Registrations by Campus/Program*
Fall 2003 - Fall 2007

Main Campus Programs	Fall 2003		Fall 2004		Fall 2005		Fall 2006		Fall 2007	
Main Campus Undergraduate	2027	22.9%	2959	30.9%	2903	30.3%	2565	29.1%	2507	28.6%
Main Campus Graduate	1454	16.5%	1660	17.3%	1641	17.1%	1589	18.0%	1791	20.4%
DPA	106	1.2%	111	1.2%	98	1.0%	115	1.3%	0	0.0%
EdD	376	4.3%	407	4.3%	349	3.6%	357	4.1%	299	3.4%
PASC	24	0.3%	13	0.1%	21	0.2%	17	0.2%	4	0.0%
Law	196	2.2%	237	2.5%	329	3.4%	362	4.1%	420	4.8%
	4183	47.3%	5387	56.3%	5341	55.7%	5005	56.8%	5021	57.2%
Regional Campus Administration (RCA)										
CAPA	788	8.9%	809	8.4%	793	8.3%	719	8.2%	730	8.3%
Education	525	5.9%	541	5.6%	589	6.1%	533	6.1%	490	5.6%
ULV Online	307	3.5%	393	4.1%	492	5.1%	531	6.0%	575	6.6%
Teacher Credential (RCA Ed.)	138	1.6%	160	1.7%	147	1.5%	164	1.9%	172	2.0%
	1758	19.9%	1903	19.9%	2021	21.1%	1947	22.1%	1967	22.4%
Regional Campuses										
Bakersfield Credential	101	1.1%	154	1.6%	154	1.6%	132	1.5%	112	1.3%
Central Coast	81	0.9%	98	1.0%	119	1.2%	85	1.0%	89	1.0%
High Desert Victorville	107	1.2%	144	1.5%	142	1.5%	118	1.3%	103	1.2%
Inland Empire	314	3.6%	289	3.0%	259	2.7%	240	2.7%	289	3.3%
Kern County/Bakersfield	176	2.0%	126	1.3%	155	1.6%	158	1.8%	180	2.1%
Orange County	437	4.9%	365	3.8%	343	3.6%	304	3.5%	270	3.1%
San Fernando Valley	391	4.4%	408	4.3%	364	3.8%	331	3.8%	288	3.3%
Ventura County	138	1.6%	158	1.6%	161	1.7%	111	1.3%	110	1.3%
	1745	19.7%	1742	18.2%	1697	17.7%	1479	16.8%	1441	16.4%
Regional Campuses on Military Bases										
Eielson/Ft. Wainwright	6	0.1%	2	0.0%	0	0.0%	0	0.0%	0	0.0%
Elmendorf	50	0.6%	0	0.0%	0	0.0%	0	0.0%	0	0.0%
Point Mugu	242	2.7%	300	3.1%	296	3.1%	284	3.2%	243	2.8%
Vandenberg	94	1.1%	68	0.7%	60	0.6%	52	0.6%	43	0.5%
	392	4.4%	370	3.9%	356	3.7%	336	3.8%	286	3.3%
Other Programs										
Ecumenical Centers (ABTC/ECBCS)	44	0.5%	46	0.5%	54	0.6%	37	0.4%	33	0.4%
EPIC	36**	0.4%	34	0.4%	31	0.3%	0	0.0%	24	0.3%
	80	0.9%	80	0.8%	85	0.9%	37	0.4%	57	0.6%
Special Programs										
Cal Poly CLAD	69	0.8%	94	1.0%	92	1.0%	0	0.0%	0	0.0%
	69	0.8%	94	1.0%	92	1.0%	0	0.0%	0	0.0%
Overseas Campuses/Programs										
Athens***	610**	6.9%	0	0.0%	0	0.0%	0	0.0%	0	0.0%
	610	6.9%	0	0.0%	0	0.0%	0	0.0%	0	0.0%
Enrollment Total	8837	100.0%	9576	100.0%	9592	100.0%	8804	100.0%	8772	100.0%
Professional Development/Travel Learning	298	3.3%	372	3.7%	395	4.0%	846	8.8%	1032	10.5%
Grand Total	9135	100.0%	9948	100.0%	9987	100.0%	9650	100.0%	9804	100.0%

* The numbers in this page are based on student course campus, where the students actually took the courses. A correction is made to Fall 2006 data.

** End of Term enrollment figures; census day figures unavailable.

*** Athens Campus was closed after Summer 2004. Thereafter, its students thereafter are classified under "Main Campus" since the 5th edition.

Source: Institutional Research Annual Census on November 15.

**A-10: Student Full-Time Equivalent (FTE) by Campus/Program
Fall 2003 - Fall 2007 and Academic Year 2004-05 through 2006-07***

Main Campus Programs	Fall 2003		Fall 2004		Fall 2005		Fall 2006		Fall 2007		IPEDS 2004-05		IPEDS 2005-06		IPEDS 2006-07	
Main Campus Undergraduate	1379.8	22.3%	1603.5	24.0%	1697.7	25.0%	1635.7	24.0%	1636.5	23.6%	1741.0	27.3%	1714.6	25.7%	1714.3	25.0%
Main Campus Graduate	1235.9	20.0%	1275.3	19.1%	1204.6	17.8%	1211.1	17.8%	1265.2	18.3%	1055.7	16.5%	1106.5	16.6%	1143.8	16.7%
DPA	57.0	0.9%	67.3	1.0%	59.3	0.9%	61.6	0.9%	51.4	0.7%	46.0	0.7%	42.7	0.6%	40.0	0.6%
EdD	254.3	4.1%	267.9	4.0%	213.5	3.1%	197.3	2.9%	159.0	2.3%	174.9	2.7%	145.6	2.2%	139.8	2.0%
PASC	6.7	0.1%	0.8	0.0%	0.7	0.0%	2.1	0.0%	0.6	0.0%	8.2	0.1%	1.0	0.0%	0.8	0.0%
Law	266.9	4.3%	306.2	4.6%	364.0	5.4%	371.8	5.5%	434.8	6.3%	242.5	3.8%	284.0	4.2%	308.5	4.5%
	3200.6	51.7%	3521.0	52.8%	3539.9	52.2%	3479.5	51.1%	3547.5	51.3%	3268.3	51.2%	3294.5	49.3%	3347.1	48.8%
Regional Campus Administration (RCA)																
CAPA	482.7	7.8%	518.5	7.8%	505.2	7.4%	442.3	6.5%	411.1	5.9%	596.5	9.3%	533.1	8.0%	483.0	7.0%
Education	402.8	6.5%	401.7	6.0%	448.8	6.6%	395.3	5.8%	368.0	5.3%	368.0	5.8%	411.7	6.2%	385.2	5.6%
ULV Online	43.0	0.7%	83.8	1.3%	116.5	1.7%	165.8	2.4%	180.1	2.6%	88.6	1.4%	118.7	1.8%	159.0	2.3%
Teacher Credential (RCA Ed.)	160.0	2.6%	165.3	2.5%	165.6	2.4%	183.2	2.7%	170.9	2.5%	112.2	1.8%	139.9	2.1%	153.5	2.2%
	1088.5	17.6%	1169.3	17.5%	1236.1	18.2%	1186.6	17.4%	1130.1	16.3%	1165.3	18.3%	1203.5	18.0%	1180.6	17.2%
Regional Campuses																
Bakersfield Credential***	75.2	1.2%	69.7	1.0%	100.8	1.5%	82.3	1.2%	67.8	1.0%	95.7	1.5%	96.9	1.4%	89.6	1.3%
Central Coast	66.8	1.1%	83.7	1.3%	94.9	1.4%	68.0	1.0%	61.3	0.9%	72.0	1.1%	89.5	1.3%	61.9	0.9%
High Desert Victorville	50.9	0.8%	102.8	1.5%	107.9	1.6%	93.8	1.4%	86.1	1.2%	84.7	1.3%	95.0	1.4%	85.8	1.3%
Inland Empire	231.8	3.7%	202.0	3.0%	191.0	2.8%	180.0	2.6%	202.0	2.9%	176.1	2.8%	183.0	2.7%	177.4	2.6%
Kern County/Bakersfield	157.9	2.5%	144.3	2.2%	143.1	2.1%	128.3	1.9%	165.0	2.4%	117.8	1.8%	128.4	1.9%	116.0	1.7%
Orange County	310.6	5.0%	246.3	3.7%	239.0	3.5%	205.0	3.0%	188.5	2.7%	231.1	3.6%	230.0	3.4%	188.9	2.8%
San Fernando Valley	265.0	4.3%	286.4	4.3%	265.0	3.9%	241.1	3.5%	202.6	2.9%	249.4	3.9%	257.2	3.8%	229.8	3.3%
Ventura County	105.5	1.7%	124.0	1.9%	124.5	1.8%	84.3	1.2%	70.6	1.0%	104.1	1.6%	112.8	1.7%	78.5	1.1%
	1263.7	20.4%	1259.2	18.9%	1266.2	18.7%	1082.7	15.9%	1043.8	15.1%	1130.9	17.7%	1192.8	17.8%	1027.9	15.0%
Regional Campuses on Military Bases																
Eielson/Ft. Wainwright	5.0	0.1%	0.0	0.0%	0.0	0.0%	0.0	0.0%	0.0	0.0%	0.0	0.0%	0.0	0.0%	0.0	0.0%
Elmendorf	47.7	0.8%	0.0	0.0%	0.0	0.0%	0.0	0.0%	0.0	0.0%	0.3	0.0%	0.0	0.0%	0.0	0.0%
Point Mugu	192.4	3.1%	267.0	4.0%	218.8	3.2%	242.3	3.6%	220.1	3.2%	213.5	3.3%	218.8	3.3%	225.8	3.3%
Vandenberg	73.9	1.2%	57.7	0.9%	48.5	0.7%	47.0	0.7%	44.0	0.6%	44.8	0.7%	49.0	0.7%	47.7	0.7%
	319.0	5.2%	324.7	4.9%	267.3	3.9%	289.3	4.3%	264.1	3.8%	258.6	4.1%	267.8	4.0%	273.5	4.0%
Other Programs																
Ecumenical Centers (ABTC/ECBCS)	32.7	0.5%	28.4	0.4%	31.9	0.5%	21.3	0.3%	18.0	0.3%	26.5	0.4%	29.0	0.4%	19.6	0.3%
EPIC**	0.3	0.0%	16.8	0.3%	15.2	0.2%	0.0	0.0%	15.2	0.2%	25.0	0.4%	19.2	0.3%	16.9	0.2%
	33.0	0.5%	45.2	0.7%	47.1	0.7%	21.3	0.3%	33.2	0.5%	51.5	0.8%	48.2	0.7%	36.5	0.5%
Special Programs																
Cal Poly CLAD	34.0	0.5%	44.0	0.7%	46.6	0.7%	0.0	0.0%	0.0	0.0%	52.6	0.8%	17.1	0.3%	0.0	0.0%
Professional Development/Travel Learning	252.5	4.1%	308.2	4.6%	374.0	5.5%	746.2	11.0%	901.8	13.0%	430.2	6.7%	649.1	9.7%	993.4	14.5%
	286.5	4.6%	352.2	5.3%	420.6	6.2%	746.2	11.0%	901.8	13.0%	482.8	7.6%	666.2	10.0%	993.4	14.5%
Overseas Campuses/Programs																
Athens**	1.5	0.0%	0.0	0.0%	0.0	0.0%	0.0	0.0%	0.0	0.0%	0.0	0.0%	0.0	0.0%	0.0	0.0%
	1.5	0.0%	0.0	0.0%	0.0	0.0%	0.0	0.0%	0.0	0.0%	0.0	0.0%	0.0	0.0%	0.0	0.0%
Campus not Designated	0.0	0.0%	0.0	0.0%	6.2	0.1%	1.0	0.0%	0.0	0.0%	26.3	0.4%	10.0	0.1%	3.7	0.1%
Enrollment Grand Total****	6192.8	100.0%	6671.6	100.0%	6783.4	100.0%	6806.5	100.0%	6920.6	100.0%	6383.7	100.0%	6683.0	100.0%	6862.8	100.0%

* Since *Fact Book 2001-2005*, two types of FTEs are provided: (1) ULV defined FTE for accreditation purposes and (2) IPEDs (Integrated Postsecondary Education Data System) defined FTE. For the purpose of accreditation, ULV defines FTE differently for undergraduate students and graduate students across different campuses. ULV defined FTE is calculated as follows:

hours divided by 8; CAPA students, term credit hours divided by 12, and other regional campuses students, term credit hours divided by 8; Bakersfield Credential students, credit hours divided by 8; and CalPolyCLAD students, semester hours divided by 9.

1), term hours divided by 9, and Doctoral (Tier 2), term hours divided by 6; DPA, EdD, and Bakersfield Credential students, term credit hours divided by 9; Law students, term hours divided by 9; Regional Campus students, term hours divided by 6; Athens' students, term hours divided by 6; CalPoly CLAD students, semester hours divided by 9.

IPEDS FTE (Full Time Equivalent) is a measurement equal to one student enrolled full time for one academic year. ULV's academic year includes Fall, Winter, Interterm, Spring, and Summer, and it calculates as "graduate credit hours are divided by 24 and undergraduate credit hours are divided by 30".

A third type of FTE, as defined by Common Data Set (CDS), is available online at <http://www.ulv.edu/cds/>. CDS reports only main campus undergraduate enrollment and calculates total FTE as the sum of total full-time students (usually 12 credits for undergraduate and 9 credit for graduate, or university specified credits for full-time students) plus 1/3 part-time students.

** Accurate census data were not available 2002 through 2005. The Athens Campus was closed after Summer 2004 and its students thereafter are classified under "Main Campus".

*** Bakersfield was formally under Main Campus Programs, but has been reported under Regional Campus Administration since this edition.

**** Correction: FTE for "special programs" and for doctoral psychology students in Main Campus Graduates were left out in the 5th edition are now included in this edition.

Source: Institutional Research Annual Census on November 15.

**A-11: Undergraduate Student Full-Time Equivalent (FTE) by Major at all ULV Campuses*
Fall 2003 - Fall 2007 and Academic Year 2004-05 through 2006-07**

Major	Fall 2003		Fall 2004		Fall 2005		Fall 2006		Fall 2007		IPEDS 2004-05		IPEDS 2005-06		IPEDS 2006-07	
College of Arts & Sciences																
Athletic Training	17.5	0.6%	29.7	0.9%	42.3	1.2%	40.6	1.2%	34.3	1.1%	33.2	0.9%	43.9	1.2%	40.7	1.2%
Anthropology	6.1	0.2%	8.3	0.2%	7.2	0.2%	7.6	0.2%	10.7	0.3%	9.2	0.3%	7.2	0.2%	8.8	0.3%
Art	22.4	0.7%	28.5	0.8%	25.0	0.7%	23.2	0.7%	32.1	1.0%	29.3	0.8%	26.8	0.8%	31.5	0.9%
Art History	1.2	0.0%	2.2	0.1%	2.6	0.1%	7.6	0.2%	7.4	0.2%	2.8	0.1%	4.1	0.1%	7.9	0.2%
Behavioral Science	34.1	1.1%	42.7	1.2%	24.0	0.7%	22.2	0.7%	21.9	0.7%	42.0	1.2%	23.0	0.7%	20.7	0.6%
Biology	55.7	1.8%	79.3	2.3%	93.0	2.7%	108.7	3.3%	93.8	2.9%	88.7	2.5%	99.6	2.8%	106.7	3.2%
Broadcasting	37.3	1.2%	34.8	1.0%	43.9	1.3%	44.3	1.4%	37.8	1.2%	44.0	1.3%	49.2	1.4%	47.0	1.4%
Chemistry	21.4	0.7%	22.1	0.6%	26.6	0.8%	28.6	0.9%	24.3	0.8%	26.8	0.8%	28.9	0.8%	30.3	0.9%
Communications	70.3	2.3%	83.3	2.4%	81.1	2.3%	83.5	2.5%	89.1	2.8%	84.3	2.4%	84.6	2.4%	90.2	2.7%
Comparative Literature	1.0	0.0%	1.0	0.0%	0.0	0.0%	1.8	0.1%	1.0	0.0%	1.1	0.0%	0.5	0.0%	1.3	0.0%
Computer Science & Engineering	59.7	2.0%	47.5	1.4%	46.0	1.3%	40.2	1.2%	29.7	0.9%	52.9	1.5%	42.5	1.2%	40.8	1.2%
Criminology	122.3	4.0%	169.5	4.9%	156.2	4.5%	152.4	4.6%	155.6	4.8%	159.8	4.6%	156.6	4.5%	152.7	4.6%
English	51.1	1.7%	63.7	1.8%	61.0	1.7%	55.7	1.7%	50.7	1.6%	69.6	2.0%	66.0	1.9%	56.1	1.7%
Environmental Biology	2.0	0.1%	3.4	0.1%	1.0	0.0%	3.0	0.1%	6.0	0.2%	1.8	0.1%	1.8	0.1%	5.2	0.2%
Environmental Management	0.0	0.0%	1.0	0.0%	1.0	0.0%	1.0	0.0%	0.0	0.0%	1.2	0.0%	1.2	0.0%	0.6	0.0%
French	1.0	0.0%	0.0	0.0%	0.9	0.0%	1.1	0.0%	1.0	0.0%	0.4	0.0%	1.5	0.0%	0.5	0.0%
General Studies (AA)	0.3	0.0%	0.0	0.0%	2.8	0.1%	0.0	0.0%	9.8	0.3%	0.0	0.0%	5.1	0.1%	12.3	0.4%
German	0.0	0.0%	1.0	0.0%	0.0	0.0%	0.0	0.0%	1.0	0.0%	0.4	0.0%	0.0	0.0%	0.4	0.0%
History	17.5	0.6%	39.9	1.2%	35.8	1.0%	35.8	1.1%	33.3	1.0%	38.5	1.1%	37.3	1.1%	34.8	1.0%
International Business & Language	21.0	0.7%	15.0	0.4%	22.0	0.6%	21.0	0.6%	21.0	0.7%	17.6	0.5%	23.7	0.7%	23.4	0.7%
International Studies	2.0	0.1%	5.0	0.1%	4.8	0.1%	2.7	0.1%	2.7	0.1%	6.0	0.2%	3.9	0.1%	3.0	0.1%
Journalism	31.6	1.0%	40.1	1.2%	42.3	1.2%	43.0	1.3%	36.7	1.1%	43.8	1.3%	45.7	1.3%	47.1	1.4%
Legal Studies/Paralegal Studies*	40.9	1.3%	62.5	1.8%	69.8	2.0%	66.4	2.0%	61.9	1.9%	64.1	1.8%	73.8	2.1%	65.6	2.0%
Liberal Arts	6.5	0.2%	14.5	0.4%	17.2	0.5%	10.7	0.3%	12.8	0.4%	17.3	0.5%	18.8	0.5%	11.7	0.4%
Mathematics	22.3	0.7%	23.7	0.7%	21.0	0.6%	21.4	0.7%	17.7	0.5%	22.8	0.7%	20.5	0.6%	20.2	0.6%
Movement & Sports Science/Phys Ed	67.3	2.2%	62.7	1.8%	62.4	1.8%	58.6	1.8%	61.2	1.9%	69.5	2.0%	62.9	1.8%	63.2	1.9%
Music	12.9	0.4%	14.7	0.4%	10.3	0.3%	7.5	0.2%	7.7	0.2%	14.6	0.4%	11.1	0.3%	7.9	0.2%
Natural History/Science	0.0	0.0%	2.0	0.1%	0.0	0.0%	0.0	0.0%	0.0	0.0%	1.7	0.0%	0.0	0.0%	0.0	0.0%
Philosophy	8.8	0.3%	10.0	0.3%	5.5	0.2%	8.0	0.2%	11.5	0.4%	10.9	0.3%	6.4	0.2%	8.7	0.3%
Physics	4.3	0.1%	5.0	0.1%	6.3	0.2%	5.5	0.2%	6.0	0.2%	5.9	0.2%	6.4	0.2%	6.6	0.2%
Political Science	43.1	1.4%	50.4	1.5%	50.5	1.4%	49.9	1.5%	51.9	1.6%	52.8	1.5%	52.4	1.5%	50.0	1.5%
Psychology	198.2	6.5%	230.6	6.7%	213.4	6.1%	221.2	6.7%	209.1	6.5%	233.3	6.7%	216.1	6.1%	223.2	6.7%
Religion	7.9	0.3%	6.9	0.2%	3.4	0.1%	4.6	0.1%	6.9	0.2%	6.0	0.2%	3.4	0.1%	5.9	0.2%
Religion & Philosophy	4.8	0.2%	3.5	0.1%	1.0	0.0%	5.7	0.2%	6.7	0.2%	2.9	0.1%	1.8	0.1%	5.3	0.2%
Social Science	17.4	0.6%	19.0	0.5%	16.6	0.5%	15.9	0.5%	12.1	0.4%	21.4	0.6%	17.4	0.5%	18.9	0.6%
Sociology	38.9	1.3%	52.1	1.5%	58.3	1.7%	57.3	1.7%	59.2	1.8%	59.9	1.7%	56.6	1.6%	59.0	1.8%
Spanish	7.7	0.3%	6.1	0.2%	13.6	0.4%	13.2	0.4%	9.5	0.3%	6.4	0.2%	13.7	0.4%	13.0	0.4%
Speech Communication	9.0	0.3%	11.5	0.3%	21.1	0.6%	34.5	1.1%	30.2	0.9%	15.5	0.4%	25.1	0.7%	36.8	1.1%
Theatre Arts	22.0	0.7%	21.0	0.6%	27.3	0.8%	25.4	0.8%	22.0	0.7%	25.6	0.7%	28.7	0.8%	27.3	0.8%
Student Designed Majors	1.0	0.0%	2.4	0.1%	1.3	0.0%	1.0	0.0%	3.0	0.1%	2.1	0.1%	0.6	0.0%	2.3	0.1%
	1088.5	35.6%	1316.6	38.0%	1318.5	37.6%	1330.8	40.6%	1289.4	40.1%	1386.1	39.6%	1368.6	38.9%	1387.7	41.6%
College of Business & Public Manager																
Accounting	53.3	1.7%	50.5	1.5%	53.1	1.5%	43.5	1.3%	54.1	1.7%	61.1	1.7%	53.4	1.5%	48.3	1.4%
Business Administration	634.3	20.7%	673.5	19.4%	663.0	18.9%	607.3	18.5%	623.1	19.4%	638.9	18.2%	631.3	18.0%	616.3	18.5%
Business Management	0.2	0.0%	0.0	0.0%	2.0	0.1%	36.0	1.1%	33.9	1.1%	0.0	0.0%	12.0	0.3%	39.5	1.2%
E-Commerce	1.0	0.0%	3.1	0.1%	9.9	0.3%	3.3	0.1%	3.6	0.1%	4.8	0.1%	7.2	0.2%	3.6	0.1%
Economics	7.5	0.2%	6.1	0.2%	8.4	0.2%	6.0	0.2%	11.4	0.4%	7.1	0.2%	5.6	0.2%	8.1	0.2%
Health Administration/Manager	52.2	1.7%	45.1	1.3%	34.4	1.0%	26.5	0.8%	16.9	0.5%	29.6	0.8%	27.4	0.8%	20.4	0.6%
Marketing	15.0	0.5%	19.0	0.5%	19.3	0.6%	8.5	0.3%	1.3	0.0%	19.3	0.6%	18.7	0.5%	5.7	0.2%
Organizational Management*	388.7	12.7%	392.0	11.3%	365.7	10.4%	353.3	10.8%	335.0	10.4%	380.4	10.9%	368.3	10.5%	350.6	10.5%
Public Administration*	58.5	1.9%	60.3	1.7%	59.8	1.7%	61.8	1.9%	69.2	2.2%	54.8	1.6%	64.4	1.8%	64.8	1.9%
Student Designed Majors	2.5	0.1%	4.0	0.1%	1.5	0.0%	0.5	0.0%	0.0	0.0%	1.9	0.1%	1.1	0.0%	0.4	0.0%
	1213.2	39.7%	1253.6	36.2%	1217.1	34.7%	1146.7	34.9%	1148.4	35.7%	1197.9	34.2%	1189.4	33.8%	1157.7	34.7%
College of Education & Organizational Leadership																
Child Development	146.4	4.8%	231.8	6.7%	258.0	7.4%	241.3	7.4%	216.9	6.7%	243.1	6.9%	262.5	7.5%	241.8	7.2%
Diversified Education/Liberal Studi	416.3	13.6%	410.3	11.8%	490.8	14.0%	436.2	13.3%	429.1	13.4%	426.7	12.2%	476.0	13.5%	424.4	12.7%
Multiple Subject (Credential)	0.0	0.0%	7.0	0.2%	6.5	0.2%	5.8	0.2%	4.4	0.1%	5.2	0.1%	6.7	0.2%	5.9	0.2%
Single Subject (Credential)	0.0	0.0%	0.7	0.0%	3.1	0.1%	4.1	0.1%	1.0	0.0%	1.1	0.0%	3.1	0.1%	2.5	0.1%
	562.7	18.4%	649.8	18.8%	758.4	21.6%	687.4	21.0%	651.3	20.3%	676.1	19.3%	748.2	21.3%	674.5	20.2%
Major not declared	192.9	6.3%	245.1	7.1%	214.9	6.1%	116.1	3.5%	123.8	3.9%	243.5	6.9%	208.4	5.9%	119.5	3.6%
Total Undergraduate Majors	3057.3	100.0%	3465.1	100.0%	3508.9	100.0%	3281.1	100.0%	3212.9	100.0%	3503.6	100.0%	3514.6	100.0%	3339.5	100.0%

* For explanation of FTE, see page 8.

Source: Institutional Research Annual Census on November 15.

**A-12: Graduate Student Full-Time Equivalent (FTE) by Major/Credential at All ULV Campuses*
Fall 2003 - Fall 2007 and Academic Year 2004-05 through 2006-07**

Major	Fall 2003		Fall 2004		Fall 2005		Fall 2006		Fall 2007		IPEDS 2004-05		IPEDS 2005-06		IPEDS 2006-07	
College of Arts & Sciences																
Counseling (Concentration/Special Emphasis)	37.2	1.5%	17.8	0.7%	21.9	0.9%	19.6	0.7%	21.3	1.0%	17.7	0.8%	17.0	0.6%	14.5	0.5%
Counseling / Marriage & Family Therapy (MFT)	37.3	1.5%	56.3	2.3%	64.1	2.5%	64.3	2.3%	54.9	2.6%	55.0	2.4%	53.5	2.0%	54.7	2.1%
Student Designed Major	0.9	0.0%	0.0	0.0%	0.0	0.0%	0.0	0.0%	0.0	0.0%	0.0	0.0%	0.0	0.0%	0.0	0.0%
	75.4	3.0%	74.1	3.0%	86.0	3.3%	83.9	3.0%	76.2	3.7%	72.7	3.1%	70.5	2.7%	69.2	2.6%
College of Business & Public Management																
Business Administration	587.9	23.6%	535.8	21.4%	557.5	21.7%	606.7	21.5%	659.7	31.7%	437.8	18.8%	518.1	19.7%	606.3	22.9%
Business Information Technology	13.0	0.5%	12.5	0.5%	4.5	0.2%	4.5	0.2%	5.5	0.3%	6.5	0.3%	7.1	0.3%	5.4	0.2%
Business Organizational Management	55.5	2.2%	31.7	1.3%	22.2	0.9%	30.0	1.1%	22.5	1.1%	22.3	1.0%	22.1	0.8%	25.5	1.0%
Gerontology	22.1	0.9%	25.7	1.0%	26.6	1.0%	21.5	0.8%	21.7	1.0%	23.3	1.0%	22.2	0.8%	20.6	0.8%
Health Services Administration/Management	41.5	1.7%	38.7	1.5%	31.0	1.2%	22.8	0.8%	30.5	1.5%	24.3	1.0%	25.9	1.0%	25.0	0.9%
Leadership & Management	73.3	2.9%	62.0	2.5%	57.8	2.3%	59.5	2.1%	65.8	3.2%	52.3	2.2%	53.0	2.0%	53.0	2.0%
Public Administration	39.5	1.6%	40.8	1.6%	49.5	1.9%	43.2	1.5%	47.8	2.3%	36.3	1.6%	45.9	1.7%	41.8	1.6%
Student Designed Major	0.0	0.0%	0.0	0.0%	0.5	0.0%	0.0	0.0%	0.5	0.0%	0.5	0.0%	0.1	0.0%	0.3	0.0%
	832.8	33.4%	747.2	29.9%	749.1	29.2%	788.2	28.0%	853.5	41.0%	602.8	25.9%	694.5	26.4%	777.8	29.3%
College of Education & Organizational Learning																
Child Development	31.3	1.3%	25.5	1.0%	55.2	2.1%	46.2	1.6%	15.4	0.7%	27.0	1.2%	56.4	2.1%	33.6	1.3%
Child Life	19.5	0.8%	18.2	0.7%	27.9	1.1%	23.4	0.8%	44.0	2.1%	13.5	0.6%	23.1	0.9%	22.3	0.8%
Educational Management	158.0	6.3%	145.3	5.8%	149.9	5.8%	119.5	4.2%	48.3	2.3%	123.7	5.3%	135.8	5.2%	97.5	3.7%
Multiple Subject (Credential)	307.2	12.3%	217.4	8.7%	228.8	8.9%	214.9	7.6%	192.1	9.2%	193.6	8.3%	205.1	7.8%	176.8	6.7%
Preliminary Administrative Services (Credential)	34.8	1.4%	22.5	0.9%	24.2	0.9%	12.1	0.4%	6.6	0.3%	20.0	0.9%	16.1	0.6%	12.9	0.5%
Pupil Personnel Services (Credential)	4.3	0.2%	1.3	0.1%	2.9	0.1%	2.3	0.1%	4.4	0.2%	2.5	0.1%	2.5	0.1%	3.5	0.1%
Reading	33.8	1.4%	46.3	1.9%	31.2	1.2%	31.8	1.1%	23.0	1.1%	32.3	1.4%	34.3	1.3%	25.4	1.0%
School/Educational Counseling	213.8	8.6%	231.8	9.3%	271.7	10.6%	313.6	11.1%	403.6	19.4%	228.1	9.8%	269.6	10.2%	338.2	12.8%
Single Subject (Credential)	210.0	8.4%	147.6	5.9%	144.6	5.6%	107.5	3.8%	109.1	5.2%	126.1	5.4%	115.9	4.4%	95.0	3.6%
Special Education	19.1	0.8%	27.2	1.1%	27.0	1.1%	26.4	0.9%	26.2	1.3%	29.0	1.2%	28.5	1.1%	27.7	1.0%
Special Emphasis	183.8	7.4%	371.2	14.8%	270.1	10.5%	285.6	10.1%	232.6	11.2%	276.5	11.9%	260.3	9.9%	275.0	10.4%
Special Emphasis: Advanced Teaching Methods	23.5	0.9%	28.5	1.1%	47.8	1.9%	0.0	0.0%	0.0	0.0%	38.3	1.6%	23.0	0.9%	0.0	0.0%
Student Designed Majors	0.0	0.0%	0.0	0.0%	0.0	0.0%	0.0	0.0%	1.0	0.0%	0.0	0.0%	0.0	0.0%	0.4	0.0%
	1239.1	49.7%	1282.8	51.3%	1281.3	49.9%	1183.3	42.0%	1106.3	53.1%	1110.6	47.8%	1170.7	44.5%	1108.2	41.8%
Major not Declared**	347.4	13.9%	398.0	15.9%	452.3	17.6%	763.7	27.1%	47.1	2.3%	539.3	23.2%	697.4	26.5%	697.4	26.3%
Total Graduate Students	2494.7	100.0%	2502.1	100.0%	2568.7	100.0%	2819.1	100.0%	2083.2	100.0%	2325.4	100.0%	2632.9	100.0%	2652.5	100.0%

**A- 13: Doctoral Student FTE by Major/Credential at All ULV Campuses*
Fall 2003 - Fall 2007 and Academic Year 2004-05 through 2006-07**

Major	Fall 2003		Fall 2004		Fall 2005		Fall 2006		Fall 2007		IPEDS 2004-05		IPEDS 2005-06		IPEDS 2006-07	
Clinical-Community Psychology (PsyD)	56.3	15.0%	61.6	15.5%	66.2	19.4%	70.6	21.1%	73.9	25.8%	58.4	20.3%	60.3	24.1%	61.1	25.1%
Educational/Org. Leadership/Management (EdD)	233.3	62.3%	236.2	59.4%	202.9	59.4%	198.7	59.4%	159.0	55.5%	155.4	54.0%	138.8	55.4%	140.1	57.5%
Professional Administrative Services (Credential)	6.7	1.8%	0.8	0.2%	1.0	0.3%	1.1	0.3%	0.6	0.2%	8.2	2.9%	0.8	0.3%	1.0	0.4%
Public Administration (DPA)	56.0	15.0%	67.3	16.9%	60.8	17.8%	63.1	18.9%	52.9	18.5%	46.0	16.0%	43.5	17.3%	40.8	16.7%
	352.3	94.1%	365.9	92.0%	331.0	96.9%	333.5	99.7%	286.4	100.0%	268.0	93.2%	243.3	97.1%	243.1	99.7%
Major not Declared	22.0	5.9%	31.7	8.0%	10.7	3.1%	1.0	0.3%	0.0	0.0%	19.6	6.8%	7.4	2.9%	0.8	0.3%
Total Doctoral Majors	374.3	100.0%	397.6	100.0%	341.7	100.0%	334.5	100.0%	286.4	100.0%	287.6	100.0%	250.7	100.0%	243.8	100.0%

**A- 14: First Professional Student FTE by Major at All ULV Campuses*
Fall 2003 - Fall 2007 and Academic Year 2004-05 through 2006-07**

Major	Fall 2003		Fall 2004		Fall 2005		Fall 2006		Fall 2007		IPEDS 2004-05		IPEDS 2005-06		IPEDS 2006-07	
Juris Doctor (JD)	266.9	100.0%	306.2	100.0%	364.0	100.0%	371.8	100.0%	434.8	100.0%	242.5	100.0%	371.8	100.0%	308.5	100.0%
Total First Professional Majors	266.9	100.0%	306.2	100.0%	364.0	100.0%	371.8	100.0%	434.8	100.0%	242.5	100.0%	371.8	100.0%	308.5	100.0%

* For explanation of FTE, see page 8.

** The 2007 data does not include non-degree professional development students.

Source: Institutional Research Annual Census on November 15.

A-15: Change in FTE by Campus/Program and by College*
Fall 2003 - Fall 2007

By Campus/Program**	Fall 2003		Fall 2004		Fall 2005		Fall 2006		Fall 2007	
Main Campus Undergraduate	1,379.8	22.3%	1,603.5	24.0%	1,697.7	25.0%	1,635.7	24.0%	1,636.5	23.6%
Main Campus Graduate***	1,820.8	29.4%	1,917.5	28.7%	1,842.1	27.2%	1,843.8	27.1%	1,910.9	27.6%
CAPA	482.7	7.8%	518.5	7.8%	505.2	7.4%	442.3	6.5%	411.1	5.9%
Regional Campus Programs	2,188.5	35.3%	2,234.7	33.5%	2,264.4	33.4%	2,116.3	31.1%	2,027.0	29.3%
Others****	321.0	5.2%	397.4	6.0%	473.9	7.0%	768.5	11.3%	935.0	13.5%
	6,192.8	100.0%	6,671.6	100.0%	6,783.4	100.0%	6,806.5	100.0%	6,920.6	100.0%

By College*****	Fall 2003		Fall 2004		Fall 2005		Fall 2006		Fall 2007	
College of Arts & Sciences	1,220.2	19.7%	1,452.3	21.8%	1,470.7	21.7%	1,485.3	21.8%	1,439.6	20.8%
College of Business & Public Management	2,102.0	33.9%	2,068.1	31.0%	2,027.0	29.9%	1,998.0	29.4%	2,054.9	29.7%
College of Education & Org. Leadership	2,041.8	33.0%	2,169.6	32.5%	2,243.7	33.1%	2,070.5	30.4%	1,917.2	27.7%
College of Law	266.9	4.3%	306.2	4.6%	364.0	5.4%	371.8	5.5%	434.8	6.3%
Major not designed*****	562.3	9.1%	674.8	10.1%	677.9	10.0%	880.8	12.9%	1,074.2	15.5%
	6,193.2	100.0%	6,671.0	100.0%	6,783.3	100.0%	6,806.5	100.0%	6,920.6	100.0%

* For explanation of FTE, see page 8.

** The numbers of this table are calculated from the report of page 8.

*** This category includes Main Campus Graduates, Law, EdD, DPA, and PASC.

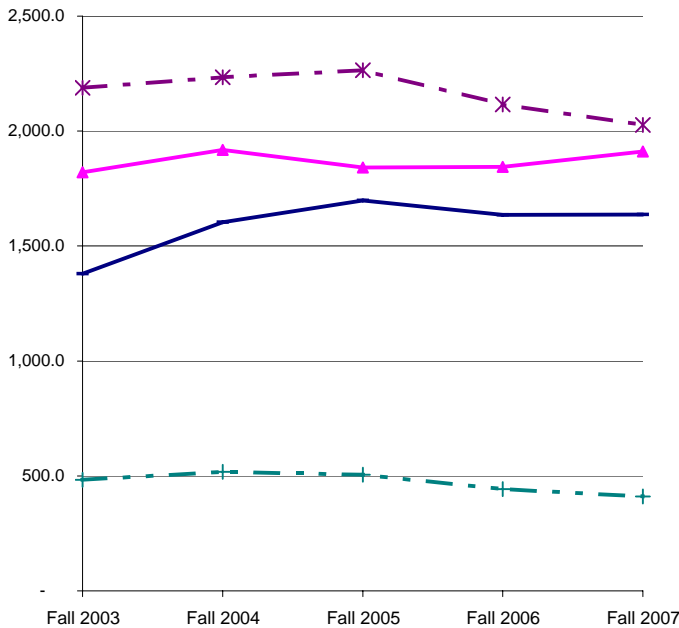
**** This category includes Other Programs, Special Programs (Professional Development), Overseas Programs, and Campus-Not-Designed of page 8.

***** The numbers on this table are based on the reports of page 9 and page 10.

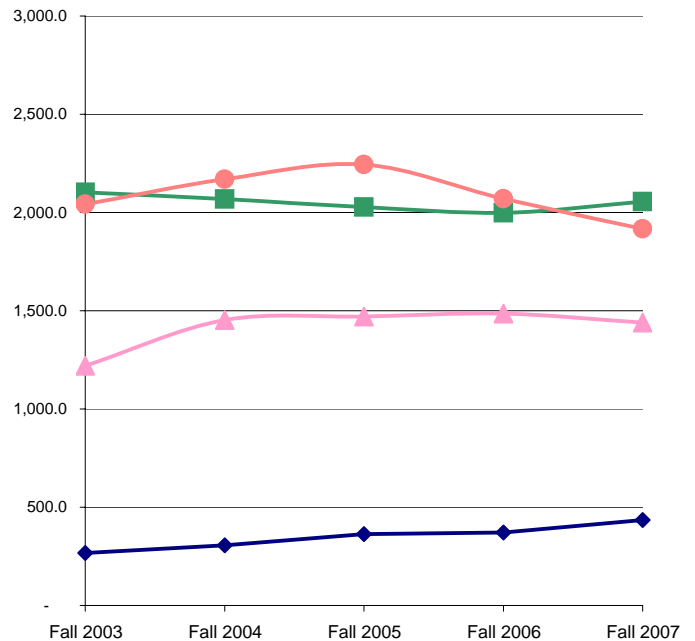
***** Fall 2007 number includes non-degree professional degree students.

Source: Institutional Research Annual Census on November 15.

Change in FTE by Campus/Program
Fall 2003 - Fall 2007



Change in FTE by College
Fall 2003 - Fall 2007



— Main Campus Undergraduate
 — Main Campus Graduate***
 - * - Regional Campus Programs
 - + - CAPA

— College of Arts & Sciences
 — College of Business & Public Management
 — College of Education & Org. Leadership
 — College of Law

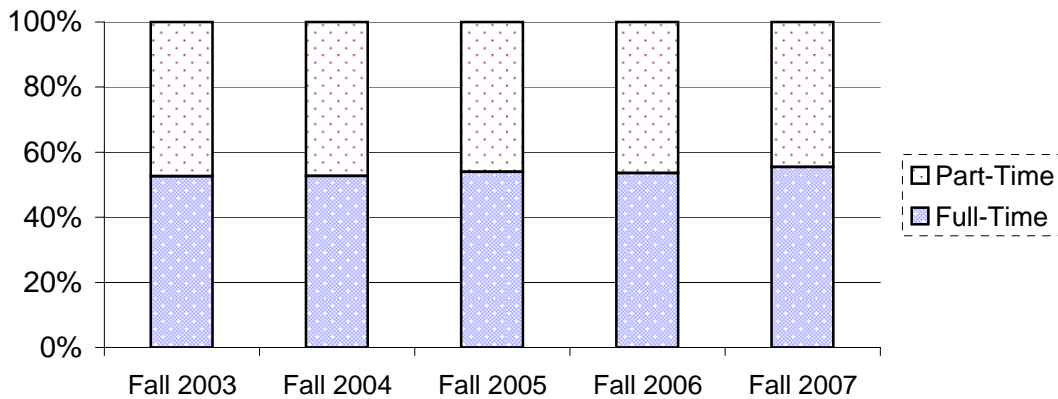
**A-16: Classification and Enrollment Status of All ULV Students
Fall 2003 - Fall 2007**

Student Level	Fall 2003		Fall 2004		Fall 2005		Fall 2006		Fall 2007	
Freshman	833	10.9%	942	11.3%	790	9.5%	693	8.3%	732	9.9%
Sophomore	662	8.7%	670	8.1%	690	8.3%	616	7.4%	603	8.2%
Junior	989	12.9%	1123	13.5%	1098	13.2%	1073	12.9%	999	13.6%
Senior	1385	18.1%	1623	19.5%	1789	21.5%	1717	20.6%	1662	22.5%
Graduate (Masters Level)	3034	39.7%	3165	38.0%	3184	38.3%	3455	41.5%	2612	35.4%
Doctoral	548	7.2%	577	6.9%	518	6.2%	511	6.1%	457	6.2%
First Professional	195	2.6%	221	2.7%	255	3.1%	263	3.2%	306	4.2%
Total	7646	100%	8321	100%	8324	100%	8328	100%	7371	100%

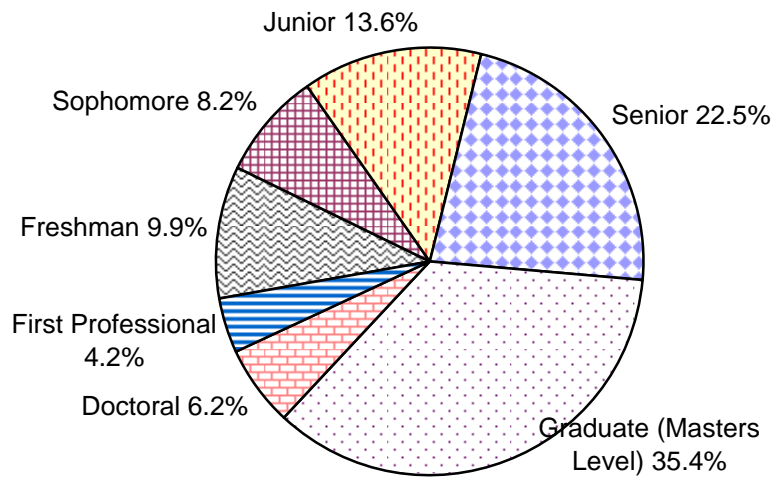
Enrollment Status	Fall 2003		Fall 2004		Fall 2005		Fall 2006		Fall 2007	
Full-Time	4020	52.6%	4385	52.7%	4492	54.0%	4465	53.6%	4087	55.4%
Part-Time	3626	47.4%	3940	47.3%	3832	46.0%	3863	46.4%	3284	44.6%
Total	7646	100%	8325	100%	8324	100%	8328	100%	7371	100%

Source: Institutional Research Annual Census on November 15. Non-degree professional development students are not included since Fall 2007.

**Enrollment Status of ULV Students
Fall 2003-Fall 2007**



Level of ULV Students - Fall 2007



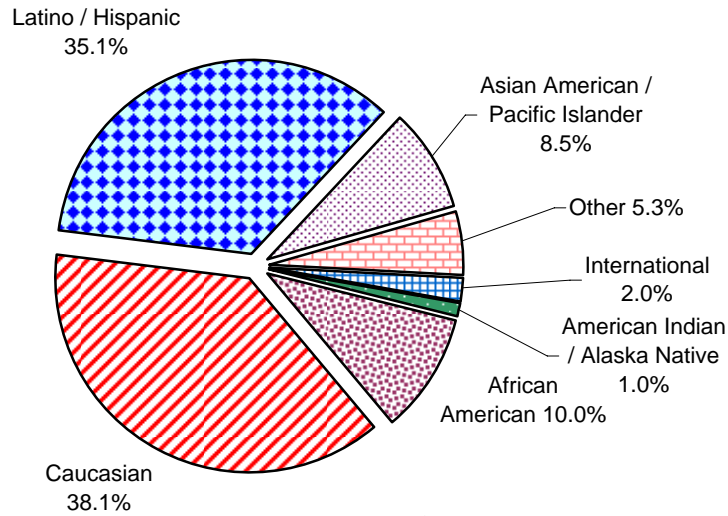
**A-17: Ethnicity and Gender of All ULV Students
Fall 2003 - Fall 2007**

Ethnicity	Fall 2003		Fall 2004		Fall 2005		Fall 2006		Fall 2007	
American Indian / Alaska Native	61	0.8%	80	1.1%	77	1.0%	64	0.9%	67	1.0%
African American	814	10.7%	834	11.5%	789	10.5%	740	10.9%	658	10.0%
Caucasian	3169	41.5%	3139	43.4%	2975	39.4%	2721	40.0%	2512	38.1%
Latino / Hispanic	2002	26.2%	2318	32.0%	2399	31.8%	2290	33.6%	2313	35.1%
Asian American / Pacific Islander	403	5.3%	402	5.6%	409	5.4%	436	6.4%	557	8.5%
Other	1004	13.1%	291	4.0%	690	9.1%	338	5.0%	346	5.3%
International	189	2.5%	169	2.3%	204	2.7%	217	3.2%	134	2.0%
Total	7642	100%	7233	100%	7543	100%	6806	100%	6587	100%

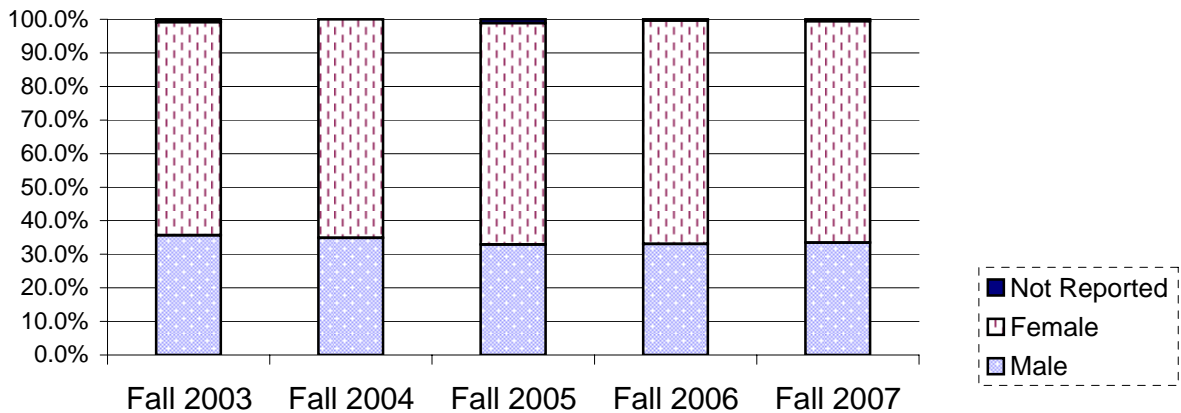
Gender	Fall 2003		Fall 2004		Fall 2005		Fall 2006		Fall 2007	
Male	2725	35.6%	2904	34.9%	2739	32.9%	2756	33.1%	2464	33.4%
Female	4857	63.5%	5421	65.1%	5487	65.9%	5538	66.5%	4864	66.0%
Not Reported	64	0.8%	0	0.0%	98	1.2%	34	0.4%	43	0.6%
Total	7646	100%	8325	100%	8324	100%	8328	100%	7371	100%

Source: Institutional Research Annual Census on November 15. Non-degree professional development students are not included since Fall 2007.

Ethnicity of All ULV Students - Fall 2007



**Gender of All ULV Students
Fall 2003- Fall 2007**

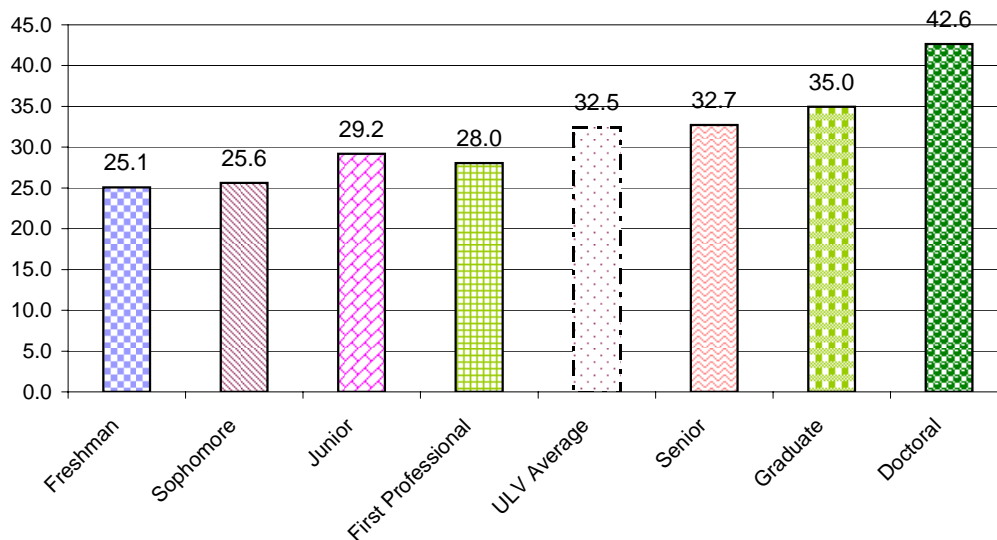


A-18: Student Age by Campus/Program and Class - Fall 2007

Main Campus Programs	Under 20		Age 20 - 24		Age 25- 29		Age 30-39		40 or Over	
Main Campus Undergraduate	595	98.7%	1024	59.7%	54	3.1%	7	0.3%	3	0.1%
Main Campus Graduate	0	0.0%	305	17.8%	568	32.3%	383	17.9%	275	12.7%
Bakersfield Credential	0	0.0%	10	0.6%	28	1.6%	28	1.3%	29	1.3%
DPA	0	0.0%	12	0.7%	9	0.5%	23	1.1%	63	2.9%
EdD	0	0.0%	0	0.0%	10	0.6%	73	3.4%	207	9.6%
PASC	0	0.0%	0	0.0%	0	0.0%	0	0.0%	1	0.0%
Law*	0	0.0%	81	4.7%	154	8.8%	52	2.4%	19	0.9%
	595	98.7%	1432	83.5%	823	46.8%	566	26.4%	597	27.7%
Regional Campus Administration (RCA)										
CAPA	0	0.0%	29	1.7%	179	10.2%	267	12.5%	219	10.1%
Education**	0	0.0%	32	1.9%	108	6.1%	159	7.4%	155	7.2%
ULV Online	0	0.0%	10	0.6%	44	2.5%	90	4.2%	96	4.4%
Teacher Credential (RCA Ed.)	0	0.0%	27	1.6%	51	2.9%	46	2.1%	40	1.9%
	0	0.0%	98	5.7%	382	21.7%	562	26.2%	510	23.6%
Professional Development Centers										
Central Coast	0	0.0%	25	1.5%	16	0.9%	23	1.1%	30	1.4%
High Desert Victorville	1	0.2%	15	0.9%	26	1.5%	27	1.3%	39	1.8%
Inland Empire	0	0.0%	21	1.2%	50	2.8%	121	5.6%	118	5.5%
Kern County/Bakersfield	0	0.0%	30	1.8%	51	2.9%	58	2.7%	48	2.2%
Orange County	0	0.0%	13	0.8%	35	2.0%	105	4.9%	163	7.5%
San Fernando Valley	0	0.0%	8	0.5%	61	3.5%	122	5.7%	129	6.0%
Ventura County	0	0.0%	14	0.8%	11	0.6%	36	1.7%	50	2.3%
	0	0.2%	111	6.5%	250	14.2%	492	23.0%	577	26.7%
Residence Centers										
Point Mugu	2	0.3%	36	2.1%	78	4.4%	94	4.4%	47	2.2%
Vandenberg	0	0.0%	4	0.2%	22	1.3%	15	0.7%	18	0.8%
	2	0.3%	40	2.3%	100	5.7%	109	5.1%	65	3.0%
Other and Special Programs										
Ecumenical Centers (ABTC/ECBCS)	0	0.0%	3	0.2%	3	0.2%	5	0.2%	17	0.8%
EPIC	6	1.0%	16	0.9%	2	0.1%	0	0.0%	0	0.0%
	6	1.0%	19	1.1%	5	0.3%	5	0.2%	17	0.8%
Professional Development/Travel Learning	0	0.0%	14	0.8%	199	11.3%	409	19.1%	393	18.2%
Enrollment Grand Total	603	100.2%	1714	100.0%	1759	100.0%	2143	100.0%	2159	100.0%

Source: Institutional Research Annual Census on November 15.

Student Average Age by Class



A-19: International Student Profile: Fall 2003 - Fall 2007

By Gender	2003		2004		2005		2006		2007	
	Count	% Count	Count	% Count	Count	% Count	Count	% Count	Count	% Count
Male	80	46.2%	91	53.2%	103	48.1%	123	47.7%	136	45.5%
Female	93	53.8%	80	46.8%	111	51.9%	135	52.3%	163	54.5%
Grand Total	173	100.0%	171	100.0%	214	100.0%	258	100.0%	299	100.0%

By Student Level

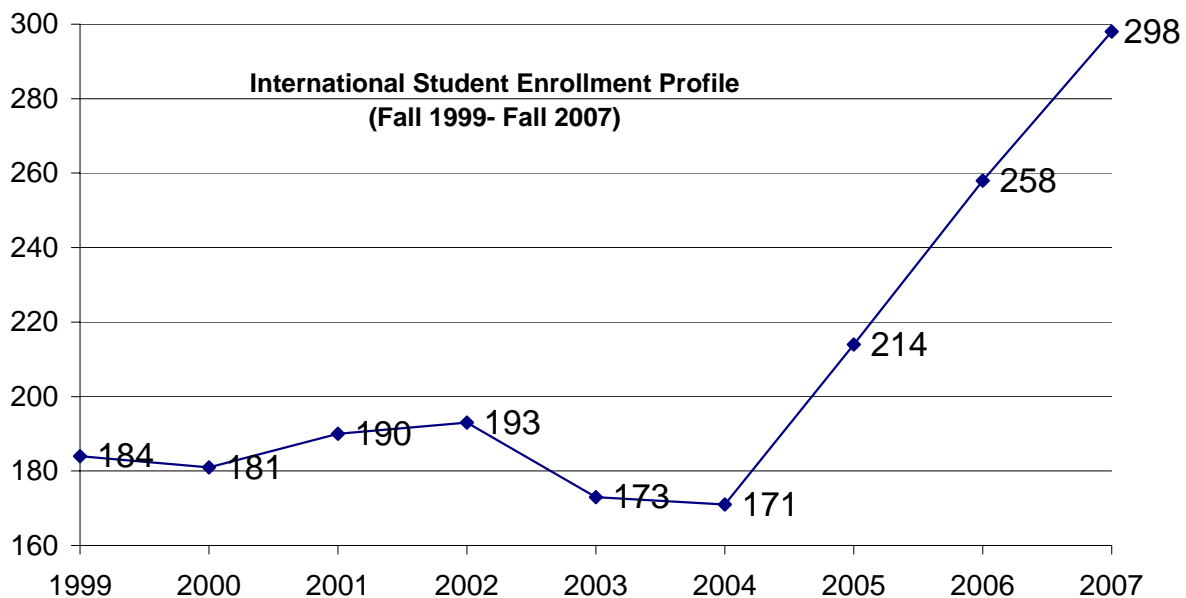
Undergraduate	14	8.1%	12	7.0%	48	22.4%	30	11.6%	29	9.7%
Masters	147	85.0%	143	83.6%	144	67.3%	212	82.2%	257	86.2%
Doctoral and Juris Doctor	12	6.9%	16	9.4%	22	10.3%	16	6.2%	12	4.0%
Grand Total	173	100.0%	171	100.0%	214	100.0%	258	100.0%	298	100.0%

By Leading Majors

Business Administration(MBA)	128	74.0%	131	76.6%	147	68.7%	200	77.5%	227	76.2%
Juris Doctor	5	2.9%	10	5.8%	12	5.6%	8	3.1%	5	1.7%
Public Administration (DPA)	7	4.0%	6	3.5%	10	4.7%	8	3.1%	5	1.7%
Other Majors	33	19.1%	24	14.0%	45	21.0%	42	16.3%	61	20.5%
Grand Total	173	100.0%	171	100.0%	214	100.0%	258	100.0%	298	100.0%

By Countries with Largest Representation

Taiwan	50	28.9%	56	32.7%	71	33.2%	126	48.8%	163	54.7%
Thailand	66	38.2%	53	31.0%	43	20.1%	59	22.9%	57	19.1%
Japan	8	4.6%	11	6.4%	12	5.6%	10	3.9%	6	2.0%
China	12	6.9%	13	7.6%	8	3.7%	9	3.5%	12	4.0%
Albania	0	0.0%	0	0.0%	10	4.7%	8	3.1%	2	0.7%
Canada	5	2.9%	7	4.1%	9	4.2%	6	2.3%	10	3.4%
Greece	0	0.0%	0	0.0%	10	4.7%	3	1.2%	2	0.7%
Other	32	18.5%	31	18.1%	51	23.8%	37	14.3%	46	15.4%
Grand Total	173	100.0%	171	100.0%	214	100.0%	258	100.0%	298	100.0%



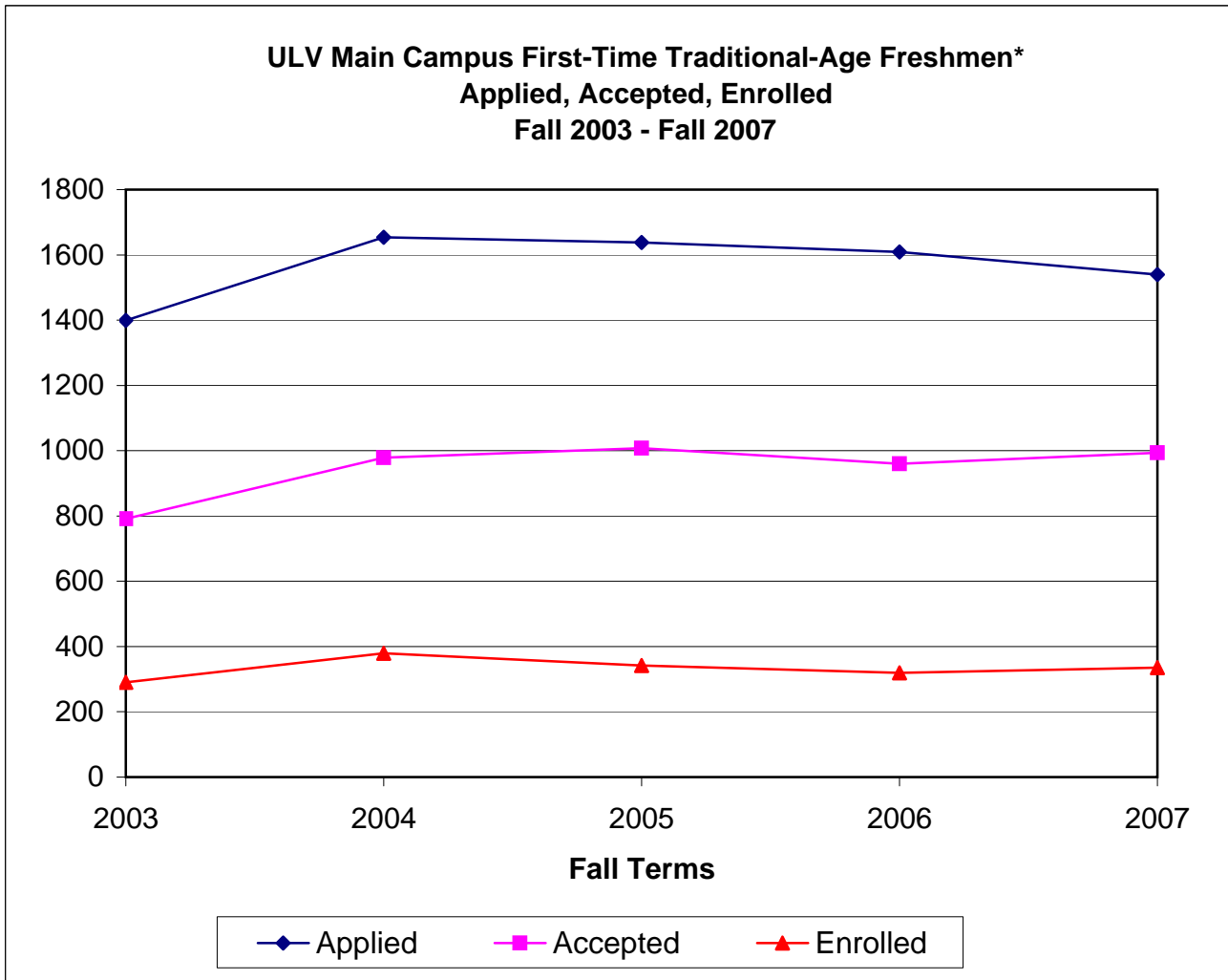
Source: International and Study Abroad Center.

B.
ADMISSIONS
&
NEW
STUDENTS

All statistics are based on data from ULV's census on November 15 for each year specified, unless otherwise noted.

B-1: Admission Statistics for Main Campus First-Time Traditional-Age Freshmen*

Application, Acceptance, and Enrollment Statistics Fall 2003 - Fall 2007



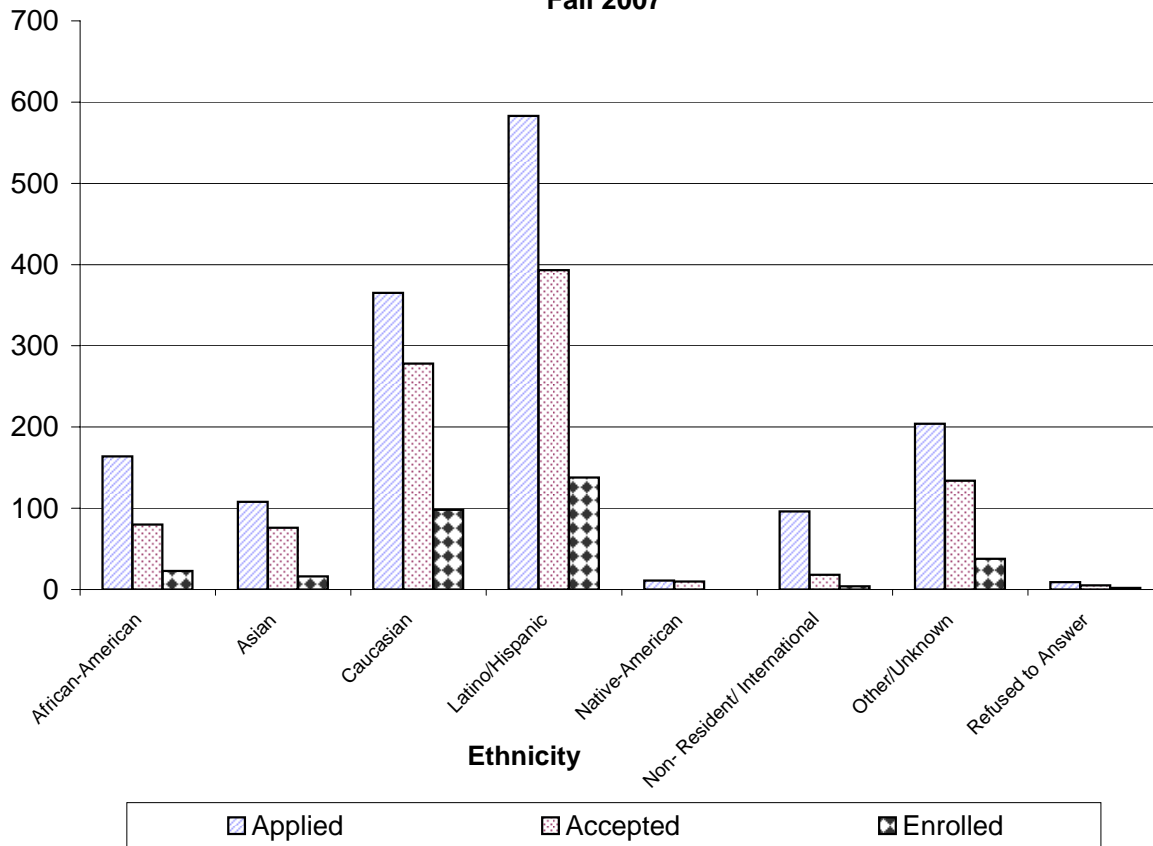
Fall	Applied	Accepted	Acceptance Rate	Enrolled	Yield Rate
2003	1399	791	57%	290	37%
2004	1654	979	59%	379	39%
2005	1638	1008	62%	342	34%
2006	1609	960	60%	319	33%
2007	1540	994	65%	335	34%

* Does not include Advanced Freshmen, who have taken less than 32 college credits after graduating from high school.

Source: Institutional Research Admission Census on October 15, except the "enrolled" for 2006 and after, which are from Institutional Research Census on November 15 of each year.

B-2: Application, Acceptance, and Enrollment Statistics by Ethnicity of Main Campus First-Time Traditional-Age Freshmen

ULV Main Campus First-Time Traditional-Age Freshmen*
Applied, Accepted, Enrolled
Fall 2007



Ethnicity	Yield Rate Fall 2001- Fall 2007						Fall 2007				
	2001	2002	2003	2004	2005	2006	Applied	Accepted	Enrolled	Acceptan ce Rate	Yield Rate
African-American	25%	28%	32%	33%	32%	28%	164	80	23	49%	29%
Asian	23%	22%	20%	17%	20%	20%	108	76	16	70%	21%
Caucasian	39%	39%	39%	40%	32%	55%	365	278	98	76%	35%
Latino/Hispanic	43%	44%	43%	44%	40%	40%	583	393	138	67%	35%
Native-American	22%	100%	50%	75%	0%	0%	11	10	0	91%	0%
Non- Resident/ International	-	-	-	0	10%	25%	96	18	4	19%	22%
Other/Unknown	38%	45%	30%	41%	38%	26%	204	134	38	66%	28%
Refused to Answer	-	-	-	33%	29%	50%	9	5	2	56%	40%

Source: Institutional Research Admission Census on October 15, except the "enrolled" for 2006 and after, which are from Institutional Research Census on November 15 of each year.

**B-3: New Main Campus Traditional-Age Students by Gender
Fall 2003 - Fall 2007**

New First-Time Freshmen

Gender	Fall 2003		Fall 2004		Fall 2005		Fall 2006		Fall 2007	
Male	100	33.0%	123	30.5%	106	30.1%	111	34.8%	116	34.5%
Female	203	67.0%	280	69.5%	246	69.9%	208	65.2%	220	65.5%
Total	303	100.0%	403	100.0%	352	100.0%	319	100.0%	336	100.0%

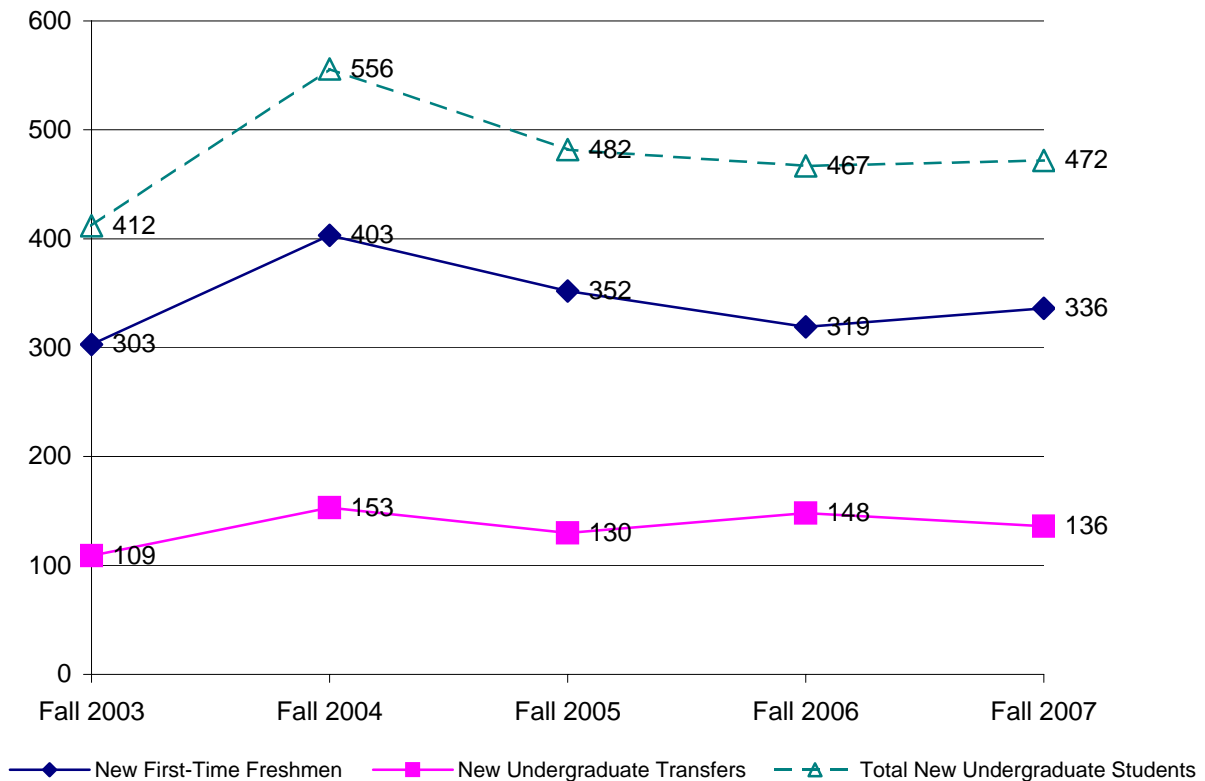
New Undergraduate Transfers

Male	41	37.6%	80	52.3%	56	43.1%	74	50.0%	62	45.6%
Female	68	62.4%	73	47.7%	74	56.9%	74	50.0%	74	54.4%
Total	109	100.0%	153	100.0%	130	100.0%	148	100.0%	136	100.0%

Total New Undergraduate Students

Male	141	34.2%	203	36.5%	162	33.6%	185	39.6%	178	37.7%
Female	271	65.8%	353	63.5%	320	66.4%	282	60.4%	294	62.3%
Total New Students	412	100%	556	100%	482	100%	467	100%	472	100%

New Main Campus Undergraduate Enrollment (Fall 2003 - Fall 2007)



Source: Fall 2002-Fall 2005, Institutional Research Admission Census on October 15; Fall 2006 and after, Institutional Research Annual Census on November 15 of each year.

**B-4: Main Campus New Traditional-Age Students by Ethnicity
Fall 2003 - Fall 2007**

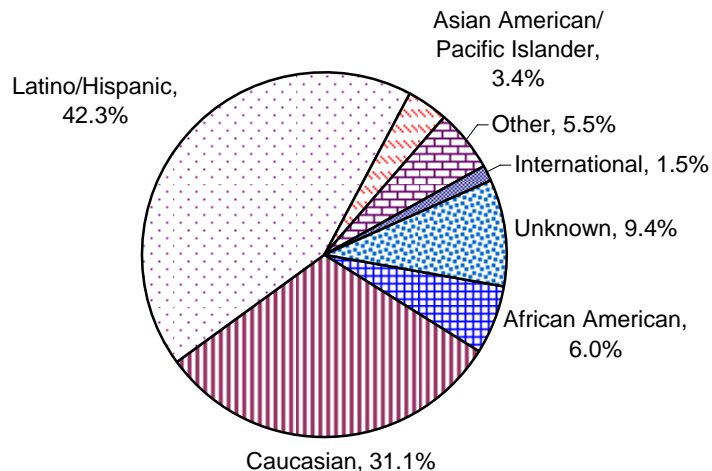
New Traditional-Age Freshmen

Ethnicity	Fall 2003		Fall 2004		Fall 2005		Fall 2006		Fall 2007	
	Count	%	Count	%	Count	%	Count	%	Count	%
American Indian/ Alaskan Native	3	1.0%	3	0.7%	0	0.0%	0	0.0%	4	1.2%
African American	25	8.3%	33	8.2%	33	9.4%	23	7.2%	18	5.4%
Caucasian	111	36.6%	145	36.0%	107	30.4%	98	30.7%	97	28.9%
Latino/Hispanic	124	40.9%	156	38.7%	135	38.4%	138	43.3%	152	45.2%
Asian American/ Pacific Islander	16	5.3%	13	3.2%	18	5.1%	16	5.0%	11	3.3%
Other	12	4.0%	26	6.5%	25	7.1%	16	5.0%	21	6.3%
International	0	0.0%	0	0.0%	0	0.0%	4	1.3%	2	0.6%
Unknown	12	4.0%	27	6.7%	34	9.7%	24	7.5%	31	9.2%
Total	303	100%	403	100%	352	100%	319	100%	336	100%

New Traditional-Age Transfers

Ethnicity	Fall 2003		Fall 2004		Fall 2005		Fall 2006		Fall 2007	
	Count	%	Count	%	Count	%	Count	%	Count	%
American Indian/ Alaskan Native	0	0.0%	0	0.0%	1	0.8%	0	0.0%	0	0.0%
African American	14	12.8%	20	13.1%	17	13.1%	18	12.2%	10	7.4%
Caucasian	42	38.5%	57	37.3%	43	33.1%	60	40.5%	49	36.0%
Latino/Hispanic	34	31.2%	47	30.7%	45	34.6%	36	24.3%	47	34.6%
Asian American/ Pacific Islander	4	3.7%	4	2.6%	5	3.8%	8	5.4%	5	3.7%
Other	6	5.5%	8	5.2%	2	1.5%	3	2.0%	5	3.7%
International	6	5.5%	7	4.6%	9	6.9%	2	1.4%	7	5.1%
Unknown/Refuse to Answer	3	2.8%	10	6.5%	8	6.2%	21	14.2%	13	9.6%
Total	109	100%	153	100%	130	100%	148	100%	136	100%

Ethnicity of New Traditional-Age Freshmen and New Traditional- Age Transfer Students - Fall 2007

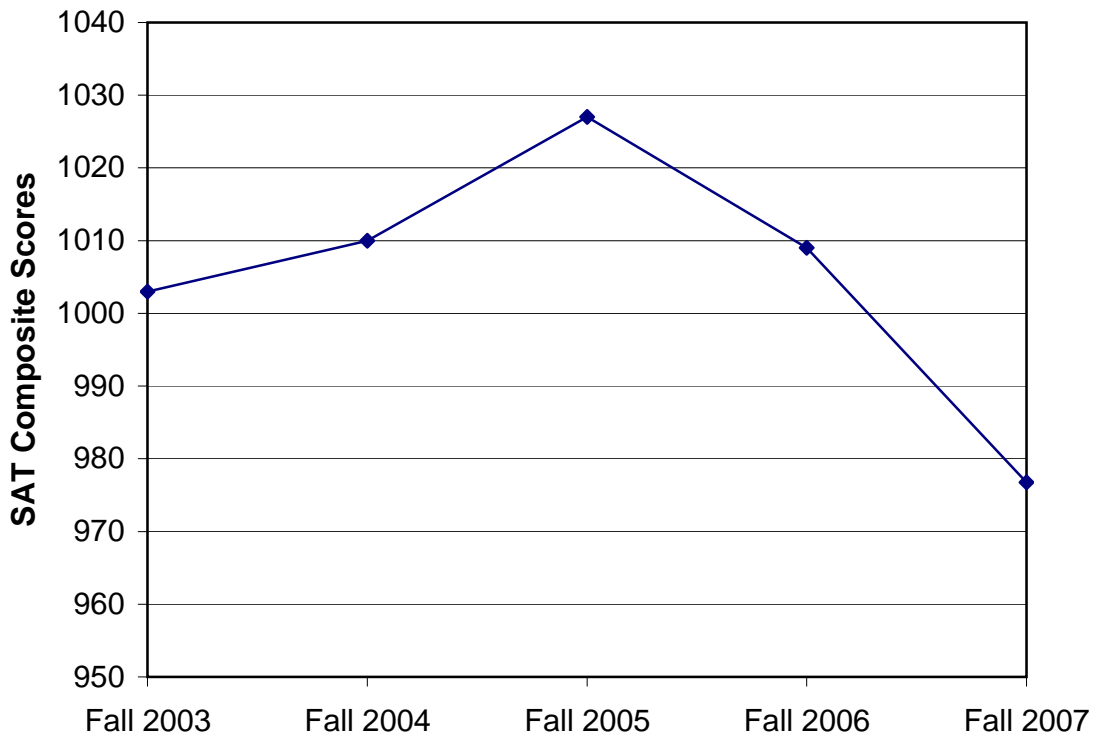


Source: Fall 2002-Fall 2005, Institutional Research Admission Census on October 15; Fall 2006 and after, Institutional Research Annual Census on November 15 of each year.

**B-5: New Main Campus Traditional-Age Freshman SAT Scores
Fall 2003 - Fall 2007**

Test Scores	Fall 2003		Fall 2004		Fall 2005		Fall 2006		Fall 2007	
	Mean	Median	Mean	Median	Mean	Median	Mean	Median	Mean	Median
SAT Math	504	500	500	510	515	510	505	500	518	480
SAT Verbal	499	490	500	502	512	510	505	500	486	480
SAT Composite	1003	990	1010	1013	1027	1020	1009	1000	977	980

**Mean SAT Composite Scores
for New Main Campus Traditional-Age Freshmen
Fall 2003 - Fall 2007**



Source: Fall 2002-Fall 2005, Institutional Research Admission Census on October 15; Fall 2006 and after, Institutional Research Annual Census on November 15 and Institutional Research Admission Census on October 15.

**B-6: New Main Campus Undergraduate Students by Entrance GPA
Fall 2003 - Fall 2007**

New Main Campus Traditional-Age Freshmen

GPA Range	Fall 2003	Fall 2004	Fall 2005	Fall 2006	Fall 2007
3.50 - 4.00+	145	188	171	146	117
3.00 - 3.49	132	162	119	112	144
2.50 - 2.99	23	51	55	56	63
2.00 - 2.49	2	1	3	2	9
Below 2.00	0	0	0	0	1
GPA not reported	1	0	4	3	2
	303	402	352	319	336
Mean Freshmen GPA	3.49	3.48	3.46	3.45	3.35

New Main Campus Traditional-Age Transfers

GPA Range	Fall 2003	Fall 2004	Fall 2005	Fall 2006	Fall 2007
3.50 - 4.00+	11	11	14	19	19
3.00 - 3.49	34	34	43	41	40
2.50 - 2.99	43	43	51	67	41
2.00 - 2.49	9	9	11	18	22
Below 2.00	0	0	0	0	0
GPA not reported	12	12	11	3	14
	109	109	130	148	136
Mean Transfer GPA	2.97	3.00	2.99	2.97	2.97

Source: Fall 2002-Fall 2005, Institutional Research Admission Census on October 15; Fall 2006 and after, Institutional Research Annual Census on November 15 and Institutional Research Admission Census on October 15.

**B-7: Top 15 High School Origins of New Main Campus First-Time Traditional-Age Freshmen
Fall 2003 - Fall 2007**

High School Origin	Fall 2003	Fall 2004	Fall 2005	Fall 2006	Fall 2007*
Bonita High School	12	17	8	14	15
Damien High School	8	4	3	13	7
Chaffey High School	6	7	5	12	5
Upland High School	3	13	13	10	5
Charter Oak High School	5	7	2	8	6
Ganesha High School	6	6	0	8	1
Bishop Amat Memorial High Sch	6	4	8	7	1
South Hills High School	5	5	7	7	6
Glendora High School	6	8	8	6	11
Diamond Ranch High School	4	2	3	6	3
Claremont High School	5	5	5	5	10
Etiwanda High School	2	2	11	5	0
Saint Lucys Priory School	2	4	3	5	11
Northview High School	6	11	2	4	4
Rancho Cucamonga High School	6	5	2	4	4
Pomona Catholic High School	5	7	5	2	1
Other Schools	216	296	267	203	246
Gand Total	303	403	352	319	336

* 9 students were recruited from Alta Loma High School.

**B-8: Top 15 College/University Origins of New Main Campus Traditional-Age Undergraduate Transfers
Fall 2003 - Fall 2007**

College/University	Fall 2003	Fall 2004	Fall 2005	Fall 2006	Fall 2007
Chaffey Community College	6	10	9	15	15
Citrus College	19	25	22	14	23
Mount San Antonio College	10	20	21	10	9
Pasadena City College	5	3	9	7	3
Riverside Community College	2	4	4	5	2
Calif State Poly Univ, Pomona	2	2	3	5	1
Fullerton College	1	5	3	5	3
Rio Hondo College	2	2	2	4	4
Azusa Pacific University	1	1	3	2	4
Fashion Inst Los Angeles	3	3	3	2	6
Victor Valley College	0	1	3	2	2
Compton Community College	0	3	0	2	0
Glendale Community College	0	4	0	2	4
Mount San Jacinto College	1	2	0	2	1
UC, Riverside	1	2	0	2	1
Other Colleges/Universities	56	66	48	69	58
Gand Total	109	153	130	148	136

Source: Fall 2002-Fall 2005, Institutional Research Admission Census on October 15; Fall 2006 and after, Institutional Research Annual Census on November 15.

**B-9: New Main Campus Traditional-Age Students by Geographic Region
Fall 2003 - Fall 2007**

U.S. State	Fall 2003	Fall 2004	Fall 2005	Fall 2006	Fall 2007
Arizona	2	3	3	4	0
California	380	513	451	429	444
Colorado	0	1	0	2	1
Connecticut	1	1	0	0	0
Florida	1	0	1	1	1
Hawaii	3	5	3	8	1
Idaho	0	1	0	0	0
Illinois	0	1	0	1	0
Indiana	0	0	0	1	0
Kansas	0	0	0	0	0
Kentucky	0	0	0	0	0
Massachusetts	3	1	0	0	1
Maryland	0	0	0	1	0
Minnesota	1	0	0	0	0
Missouri	1	1	0	0	0
Nevada	4	1	2	0	2
New Hampshire	0	2	0	0	0
New Jersey	0	1	0	0	1
New Mexico	0	1	0	0	0
New York	0	1	2	1	1
Ohio	1	1	0	1	0
Oklahoma	0	0	0	0	0
Oregon	6	3	0	4	5
Pennsylvania	2	2	0	0	2
Texas	0	1	0	0	0
Utah	1	0	0	1	2
Virginia	0	1	1	0	1
Washington	0	8	8	5	2
Wisconsin	0	0	0	0	0
Unknown U.S. State	0	0	2	8	8
Total U.S. Residents	406	549	473	467	472

Source: Fall 2002-Fall 2005, Institutional Research Admission Census on October 15; Fall 2006 and after, Institutional Research Annual Census on November 15 and Institutional Research Admission Census on October 15.

**B-10: Main Campus New Traditional-Age International Students by Geographic Region
Fall 2003 - Fall 2007**

Foreign Country	Fall 2003	Fall 2004	Fall 2005	Fall 2006	Fall 2007
Canada	0	0	0	1	0
China	0	0	0	1	1
Ecuador	0	2	1	0	0
France	2	1	2	0	0
Germany	1	0	0	0	0
Indonesia	0	0	0	0	0
Japan	0	1	2	1	0
Lebanon	0	0	0	0	0
Mexico	0	0	1	0	0
Philippines	0	0	0	1	0
Spain	1	1	1	0	0
Taiwan	0	0	0	2	0
Turkey	0	0	0	0	1
United Kingdom	0	2	2	0	0
Ukraine	0	0	0	0	1
Unknown Foreign Country	2	0	0	0	0
Total Foreign Students	6	7	9	6	3

Source: International and Study Abroad Center.

**B-11: New Main Campus Traditional-Age Freshmen by Major
Fall 2003 - Fall 2007**

College Major	Fall 2003		Fall 2004		Fall 2005		Fall 2006		Fall 2007	
	Count	%	Count	%	Count	%	Count	%	Count	%
Arts & Sciences										
Anthropology	0	0.0%	1	0.2%	2	0.6%	3	0.9%	0	0.0%
Art/Art History	4	1.3%	2	0.5%	3	0.9%	3	0.9%	3	0.9%
Athletic Training	2	0.7%	15	3.7%	11	3.1%	12	3.8%	12	3.6%
Behavioral Science	0	0.0%	2	0.5%	1	0.3%	0	0.0%	2	0.6%
Biology	17	5.6%	23	5.7%	24	6.8%	26	8.2%	29	8.6%
Broadcasting	4	1.3%	9	2.2%	7	2.0%	7	2.2%	6	1.8%
Chemistry	0	0.0%	3	0.7%	5	1.4%	8	2.5%	2	0.6%
Communications	17	5.6%	13	3.2%	18	5.1%	19	6.0%	15	4.5%
Comparative Literature	1	0.3%	0	0.0%	1	0.3%	0	0.0%	0	0.0%
Computer Science & Engineering	2	0.7%	8	2.0%	5	1.4%	9	2.8%	4	1.2%
Criminology	15	5.0%	22	5.5%	20	5.7%	20	6.3%	11	3.3%
English	6	2.0%	17	4.2%	5	1.4%	6	1.9%	9	2.7%
Environmental Biology/Management	0	0.0%	1	0.2%	0	0.0%	1	0.3%	0	0.0%
German	0	0.0%	1	0.2%	0	0.0%	0	0.0%	0	0.0%
History	2	0.7%	9	2.2%	6	1.7%	7	2.2%	4	1.2%
International Business & Language	1	0.3%	3	0.7%	2	0.6%	3	0.9%	2	0.6%
International Studies	0	0.0%	1	0.2%	0	0.0%	0	0.0%	2	0.6%
Italian Studies	2	0.7%	0	0.0%	0	0.0%	0	0.0%	0	0.0%
Journalism	10	3.3%	13	3.2%	10	2.8%	9	2.8%	10	3.0%
Legal Studies	6	2.0%	16	4.0%	15	4.3%	2	0.6%	5	1.5%
Liberal Arts	3	1.0%	6	1.5%	4	1.1%	3	0.9%	1	0.3%
Mathematics	7	2.3%	5	1.2%	6	1.7%	3	0.9%	3	0.9%
Movement & Sports Science	9	3.0%	7	1.7%	10	2.8%	3	0.9%	9	2.7%
Music	2	0.7%	2	0.5%	0	0.0%	0	0.0%	2	0.6%
Natural History	0	0.0%	1	0.2%	0	0.0%	0	0.0%	0	0.0%
Philosophy	2	0.7%	0	0.0%	2	0.6%	0	0.0%	1	0.3%
Physics	1	0.3%	1	0.2%	0	0.0%	1	0.3%	0	0.0%
Political Science	9	3.0%	6	1.5%	11	3.1%	10	3.1%	13	3.9%
Psychology	23	7.6%	33	8.2%	28	8.0%	29	9.1%	27	8.0%
Religion/Philosophy	1	0.3%	0	0.0%	0	0.0%	2	0.6%	1	0.3%
Social Science	2	0.7%	2	0.5%	1	0.3%	0	0.0%	1	0.3%
Sociology	3	1.0%	4	1.0%	4	1.1%	3	0.9%	6	1.8%
Spanish	2	0.7%	0	0.0%	2	0.6%	0	0.0%	1	0.3%
Speech Communication	0	0.0%	1	0.2%	0	0.0%	1	0.3%	6	1.8%
Theatre Arts	7	2.3%	5	1.2%	9	2.6%	6	1.9%	3	0.9%
	160	52.8%	232	57.6%	212	60.2%	196	61.4%	190	56.5%
Business & Public Management										
Accounting	5	1.7%	4	1.0%	2	0.6%	4	1.3%	8	2.4%
Business Administration/Management	35	11.6%	24	6.0%	31	8.8%	52	16.3%	55	16.4%
Economics	3	1.0%	1	0.2%	0	0.0%	2	0.6%	4	1.2%
E-Commerce	0	0.0%	0	0.0%	1	0.3%	1	0.3%	0	0.0%
Health Administration	3	1.0%	3	0.7%	0	0.0%	0	0.0%	0	0.0%
Marketing	5	1.7%	2	0.5%	3	0.9%	0	0.0%	0	0.0%
Public Administration	2	0.7%	1	0.2%	2	0.6%	0	0.0%	2	0.6%
	53	17.5%	35	8.7%	39	11.1%	59	18.5%	69	20.5%
Education & Organizational Leadership										
Child Development	3	1.0%	4	1.0%	6	1.7%	1	0.3%	6	1.8%
Liberal Studies	17	5.6%	20	5.0%	20	5.7%	24	7.5%	28	8.3%
	20	6.6%	24	6.0%	26	7.4%	25	7.8%	34	10.1%
College not Assigned										
Major not declared	70	23.1%	112	27.8%	75	21.3%	39	12.2%	43	12.8%
Grand Total All Students	303	100%	403	100%	352	100%	319	100%	336	100%

Source: Fall 2002-Fall 2005, Institutional Research Admission Census on October 15; Fall 2006 and after, Institutional Research Annual Census on November 15.

**B-12: New Main Campus Traditional-Age Transfers by Major
Fall 2003 - Fall 2007**

College Major	Fall 2003		Fall 2004		Fall 2005		Fall 2006		Fall 2007	
	Count	%	Count	%	Count	%	Count	%	Count	%
Arts & Sciences										
Anthropology	0	0.0%	1	0.7%	0	0.0%	0	0.0%	0	0.0%
Art/Art History	1	0.9%	0	0.0%	1	0.8%	2	1.4%	3	2.2%
Athletic Training	5	4.6%	1	0.7%	4	3.1%	1	0.7%	1	0.7%
Behavioral Science	2	1.8%	2	1.3%	1	0.8%	1	0.7%	0	0.0%
Biology	3	2.8%	3	2.0%	1	0.8%	10	6.8%	3	2.2%
Broadcasting	3	2.8%	3	2.0%	9	6.9%	2	1.4%	2	1.5%
Chemistry	0	0.0%	2	1.3%	0	0.0%	1	0.7%	1	0.7%
Communications	6	5.5%	13	8.6%	4	3.1%	9	6.1%	12	8.8%
Comparative Literature	0	0.0%	0	0.0%	0	0.0%	0	0.0%	0	0.0%
Computer Science & Engineering	5	4.6%	2	1.3%	0	0.0%	2	1.4%	1	0.7%
Criminology	7	6.4%	8	5.3%	6	4.6%	4	2.7%	6	4.4%
English	3	2.8%	2	1.3%	4	3.1%	1	0.7%	1	0.7%
French	0	0.0%	0	0.0%	0	0.0%	0	0.0%	4	2.9%
History	3	2.8%	7	4.6%	3	2.3%	5	3.4%	1	0.7%
International Business & Language	1	0.9%	0	0.0%	2	1.5%	0	0.0%	6	4.4%
International Studies	0	0.0%	0	0.0%	0	0.0%	2	1.4%	1	0.7%
Journalism	1	0.9%	2	1.3%	0	0.0%	2	1.4%	0	0.0%
Legal Studies/Paralegal Studies	5	4.6%	2	1.3%	6	4.6%	5	3.4%	2	1.5%
Liberal Arts	2	1.8%	4	2.6%	4	3.1%	1	0.7%	3	2.2%
Mathematics	1	0.9%	1	0.7%	1	0.8%	2	1.4%	1	0.7%
Movement & Sports Science	4	3.7%	8	5.3%	3	2.3%	11	7.4%	1	0.7%
Music	1	0.9%	1	0.7%	0	0.0%	0	0.0%	7	5.1%
Philosophy	2	1.8%	1	0.7%	0	0.0%	1	0.7%	1	0.7%
Physics	0	0.0%	0	0.0%	0	0.0%	1	0.7%	1	0.7%
Political Science	3	2.8%	2	1.3%	4	3.1%	10	6.8%	3	2.2%
Psychology	9	8.3%	14	9.3%	11	8.5%	6	4.1%	8	5.9%
Religion/Philosophy	1	0.9%	0	0.0%	1	0.8%	2	1.4%	2	1.5%
Social Science	0	0.0%	0	0.0%	1	0.8%	1	0.7%	1	0.7%
Sociology	3	2.8%	4	2.6%	3	2.3%	5	3.4%	5	3.7%
Spanish	0	0.0%	1	0.7%	2	1.5%	0	0.0%	1	0.7%
Speech Communication	0	0.0%	1	0.7%	0	0.0%	1	0.0%	1	0.0%
Theatre Arts	0	0.0%	0	0.0%	3	2.3%	3	2.0%	1	0.7%
	71	65.1%	85	56.3%	74	56.9%	91	60.8%	80	58.1%
Business & Public Management										
Accounting	2	1.8%	2	1.3%	0	0.0%	3	2.0%	4	2.9%
Business Admin./Mgmt.	9	8.3%	19	12.6%	14	10.8%	32	21.6%	32	23.5%
Economics	0	0.0%	0	0.0%	0	0.0%	0	0.0%	0	0.0%
E-Commerce	0	0.0%	0	0.0%	0	0.0%	1	0.7%	0	0.0%
Health Administration	0	0.0%	0	0.0%	0	0.0%	0	0.0%	0	0.0%
Marketing	0	0.0%	5	3.3%	5	3.8%	0	0.0%	0	0.0%
Organizational Management	0	0.0%	0	0.0%		0.0%	1	0.7%	0	0.0%
Public Administration	0	0.0%	0	0.0%	2	1.5%	0	0.0%	0	0.0%
	11	10.1%	26	17.2%	21	16.2%	37	25.0%	36	26.5%
Education & Organizational Leadership										
Child Development	4	3.7%	3	2.0%	4	3.1%	4	2.7%	4	2.9%
Liberal Studies	8	7.3%	10	6.6%	14	10.8%	10	6.8%	8	6.3%
Multiple Subject	0	0.0%	0	0.0%	0	0.0%	0	0.0%	2	1.5%
	12	11.0%	13	8.6%	18	13.8%	14	9.5%	14	10.7%
College not Assigned										
Major not declared	15	13.8%	27	17.9%	17	13.1%	6	4.1%	6	4.4%
Grand Total All Students	109	100%	151	100%	130	100%	148	99%	136	100%

Source: Fall 2003-Fall 2005, Institutional Research Admission Census on October 15; Fall 2006 and after, Institutional Research Annual Census on November 15.

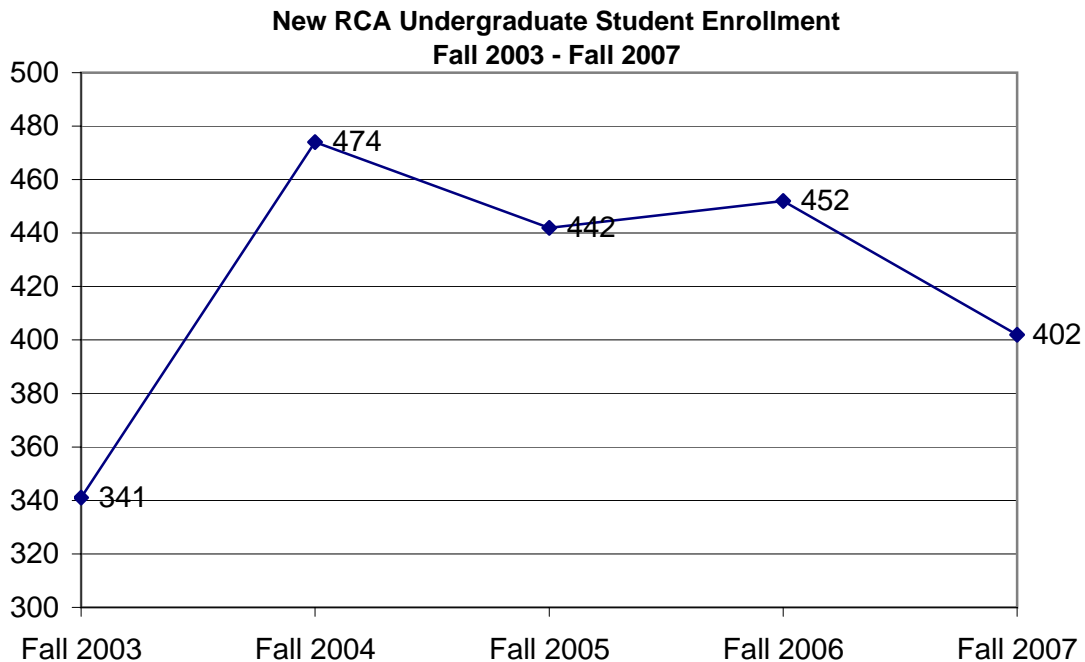
B-13: New RCA Undergraduate Enrollment by Gender and Ethnicity*
Fall 2003 - Fall 2007

New RCA Undergraduates by Gender

Gender	Fall 2003		Fall 2004		Fall 2005		Fall 2006		Fall 2007	
	Count	%	Count	%	Count	%	Count	%	Count	%
Female	248	72.7%	357	75.3%	340	76.9%	340	75.2%	287	71.4%
Male	89	26.1%	103	21.7%	94	21.3%	112	24.8%	107	26.6%
Not Reported	4	1.2%	14	3.0%	8	1.8%	0	0.0%	8	2.0%
Total	341	100.0%	474	100.0%	442	100.0%	452	100.0%	402	100.0%

New RCA Undergraduates by Ethnicity

Ethnicity	Fall 2003		Fall 2004		Fall 2005		Fall 2006		Fall 2007	
	Count	%	Count	%	Count	%	Count	%	Count	%
American Indian/ Alaskan Native	4	1.2%	6	1.3%	6	1.4%	6	1.3%	3	0.7%
African American	37	10.9%	50	10.5%	48	10.9%	47	10.4%	37	9.2%
Caucasian	132	38.7%	166	35.0%	149	33.7%	130	28.8%	125	31.1%
Latino/Hispanic	107	31.4%	167	35.2%	152	34.4%	163	36.1%	144	35.8%
Asian American/ Pacific Islander	14	4.1%	12	2.5%	15	3.4%	18	4.0%	22	5.5%
Other	9	2.6%	14	3.0%	11	2.5%	19	4.2%	12	3.0%
International	1	0.0%	0	0.0%	0	0.0%	0	0.0%	0	0.0%
Unknown	37	10.9%	59	12.4%	61	13.8%	69	15.3%	59	14.7%
Total	341	100%	474	100%	442	100%	452	100%	402	100%



* RCA (Regional Campus Administration) includes Distance Learning, CAPA, Central Coast Campus, Inland Empire Campus, High Desert Victorville Campus, Kern County Campus, Orange County Campus, Pt. Mugu Campus, San Fernando Campus, RC Education, RC Teacher Education, Ventura Campus, Vandenberg Campus, and Bakersfield Campus.

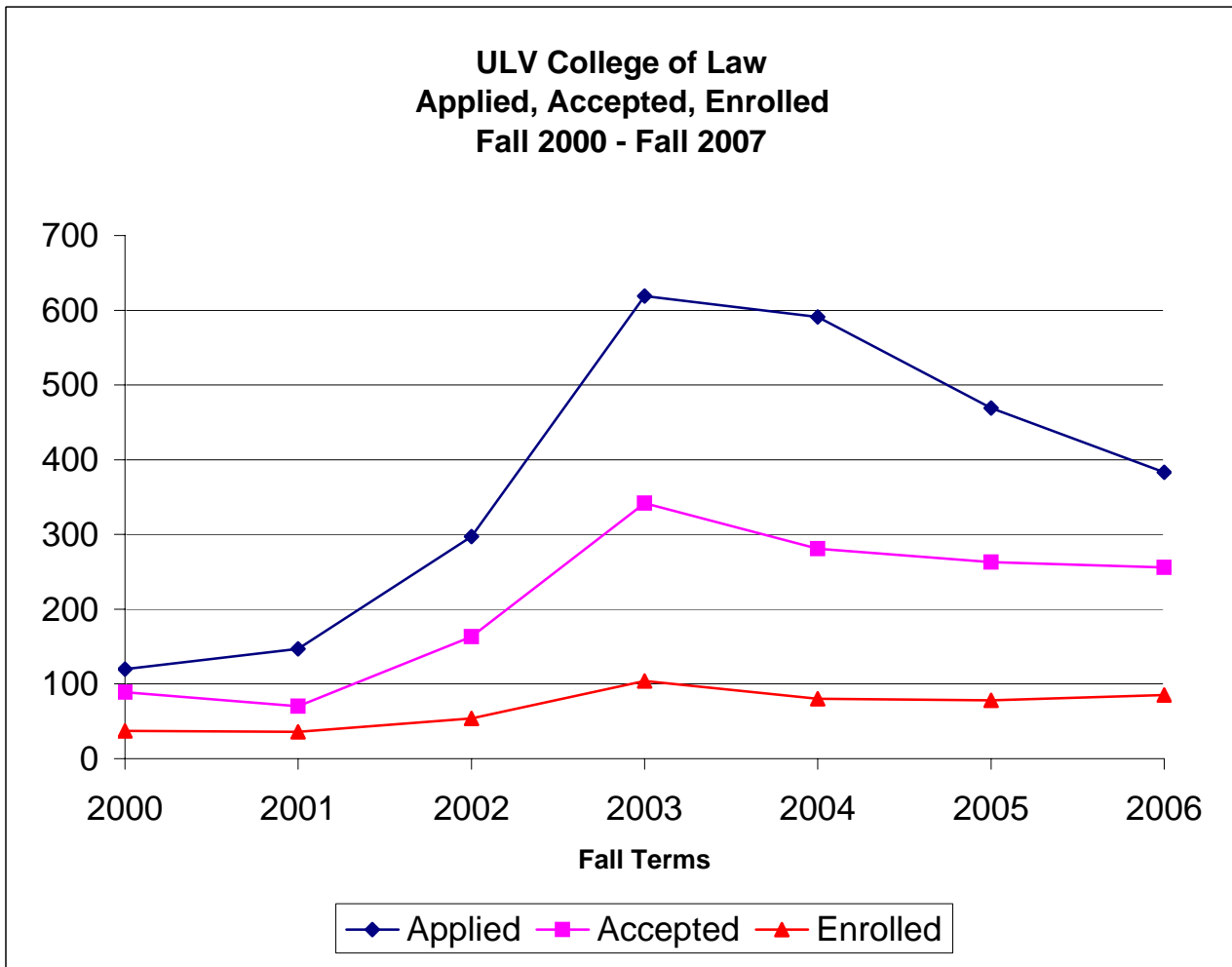
Source: Institutional Research Annual Census on November 15.

**B-14: New RCA Undergraduate Student Enrollment by Major
Fall 2003 - Fall 2007**

College Major	Fall 2003		Fall 2004		Fall 2005		Fall 2006		Fall 2007	
	Count	%	Count	%	Count	%	Count	%	Count	%
Arts & Sciences										
Anthropology	1	0.3%	2	0.4%	0	0.0%	0	0.0%	0	0.0%
Art	2	0.6%	3	0.6%	1	0.2%	1	0.2%	0	0.0%
Art History	0	0.0%	1	0.2%	1	0.2%	0	0.0%	1	0.2%
Behavioral Science	4	1.2%	8	1.7%	1	0.2%	3	0.7%	7	1.7%
Biology	2	0.6%	2	0.4%	3	0.7%	3	0.7%	0	0.0%
Broadcasting	0	0.0%	1	0.2%	1	0.2%	0	0.0%	0	0.0%
Chemistry	0	0.0%	0	0.0%	0	0.0%	1	0.2%	0	0.0%
Communications	1	0.3%	0	0.0%	1	0.2%	2	0.4%	0	0.0%
Comparative Literature	0	0.0%	0	0.0%	0	0.0%	1	0.2%	0	0.0%
Computer Science & Engineering	4	1.2%	2	0.4%	1	0.2%	2	0.4%	4	1.0%
Criminology	5	1.5%	14	3.0%	4	0.9%	14	3.1%	7	1.7%
English	5	1.5%	9	1.9%	4	0.9%	3	0.7%	2	0.5%
History	3	0.9%	3	0.6%	0	0.0%	0	0.0%	3	0.7%
Journalism	2	0.6%	0	0.0%	0	0.0%	0	0.0%	1	0.2%
Legal Studies*	12	3.5%	16	3.4%	10	2.3%	17	3.8%	9	2.2%
Liberal Arts	0	0.0%	0	0.0%	0	0.0%	0	0.0%	1	0.2%
Mathematics	4	1.2%	0	0.0%	0	0.0%	1	0.2%	3	0.7%
Movement & Sports Science	2	0.6%	2	0.4%	2	0.5%	3	0.7%	2	0.5%
Music	0	0.0%	0	0.0%	1	0.2%	0	0.0%	0	0.0%
Political Science	0	0.0%	6	1.3%	0	0.0%	1	0.0%	1	0.0%
Psychology	13	3.8%	12	2.5%	13	2.9%	18	4.0%	12	3.0%
Social Science	0	0.0%	1	0.2%	3	0.7%	0	0.0%	2	0.5%
Sociology	6	1.8%	11	2.3%	7	1.6%	7	1.5%	8	2.0%
Spanish	0	0.0%	0	0.0%	2	0.5%	1	0.2%	0	0.0%
Speech Communication	0	0.0%	0	0.0%	0	0.0%	1	0.2%	0	0.0%
	66	19.4%	93	19.6%	55	12.4%	79	17.3%	63	15.4%
Business & Public Management										
Accounting	6	1.8%	9	1.9%	6	1.4%	5	1.1%	10	2.5%
Applied Management	1	0.3%	0	0.0%	0	0.0%	0	0.0%	0	0.0%
Business Admin./Mgmt.	59	17.3%	88	18.6%	85	19.2%	83	18.4%	119	29.6%
Economics	0	0.0%	0	0.0%	0	0.0%	1	0.0%	0	0.0%
E-Commerce	0	0.0%	1	0.2%	1	0.2%	0	0.0%	0	0.0%
Health Administration*	5	1.5%	9	1.9%	6	1.4%	5	1.1%	2	0.5%
Organizational Management*	67	19.6%	67	14.1%	72	16.3%	63	13.9%	79	19.7%
Public Administration*	12	3.5%	14	3.0%	15	3.4%	16	3.5%	10	2.5%
	150	44.0%	188	39.7%	185	41.9%	173	38.1%	220	54.7%
Education & Organizational Leadership										
Child Development	86	25.2%	63	13.3%	96	21.7%	105	23.2%	41	10.2%
Liberal Studies	39	11.4%	129	27.2%	100	22.6%	92	20.4%	76	18.9%
Multiple Subject	0	0.0%	0	0.0%	4	0.9%	1	0.2%	0	0.0%
Single Subject	0	0.0%	0	0.0%	2	0.5%	1	0.2%	0	0.0%
	125	36.7%	192	40.5%	202	45.7%	199	44.0%	117	29.1%
College not Assigned										
Major not declared	0	0.0%	1	0.2%	0	0.0%	1	0.2%	2	0.5%
Grand Total All Students	341	100%	474	100%	442	100%	452	100%	402	100%

Source: Institutional Research Annual Census on November 15.

B-15: Application, Acceptance, and Enrollment Statistics for the College of Law*



Fall	Applied	Acceptance		Enrolled	Yield Rate
		Accepted	Rate		
2000	120	89	74%	37	42%
2001	147	70	48%	36	51%
2002	297	163	55%	54	33%
2003	619	342	55%	104	30%
2004	591	281	48%	80	28%
2005	469	263	56%	78	30%
2006	383	256	67%	85	33%
2007	934	435	47%	114	26%

* Does not include students at the former San Fernando Valley Campus.

Source: Admissions Office, ULV College of Law; Institutional Research Annual Census on November 15; Institutional Research Admission Census on October 15..

**B-16: New Main Campus Masters Students by Major/Credential
Fall 2003 - Fall 2007**

Major	Fall 2003		Fall 2004		Fall 2005		Fall 2006		Fall 2007	
College of Arts & Sciences										
Counseling (Concentration/Special Emphasis)	5	1.1%	10	2.5%	4	1.1%	9	2.8%	10	2.6%
Marriage & Family Therapy (MFT)	11	2.4%	27	6.7%	25	6.6%	15	4.7%	21	5.6%
	16	3.6%	37	9.1%	29	7.7%	24	7.5%	31	8.2%
College of Business & Public Management										
Business Administration	84	18.7%	73	18.0%	86	22.7%	95	29.5%	92	24.3%
Business Information Technology	0	0.0%	0	0.0%	0	0.0%	0	0.0%	2	0.5%
Business Organizational Management	1	0.2%	0	0.0%	0	0.0%	1	0.3%	0	0.0%
Gerontology	13	2.9%	9	2.2%	5	1.3%	5	1.6%	7	1.9%
Health Services Administration	7	1.6%	7	1.7%	5	1.3%	8	2.5%	11	2.9%
Leadership & Management	19	4.2%	11	2.7%	16	4.2%	11	3.4%	16	4.2%
Public Administration	14	3.1%	12	3.0%	14	3.7%	15	4.7%	21	5.6%
	138	30.7%	112	27.7%	126	33.2%	135	41.9%	149	39.4%
College of Education & Organizational Leadership										
Child Development	4	0.9%	4	1.0%	12	3.2%	8	2.5%	4	1.1%
Child Life	8	1.8%	8	2.0%	12	3.2%	10	3.1%	19	5.0%
Educational Management	3	0.7%	7	1.7%	5	1.3%	4	1.2%	4	1.1%
Multiple Subject (Credential)	103	22.9%	44	10.9%	61	16.1%	32	9.9%	44	11.6%
Preliminary Administrative Services (Credential)	2	0.4%	6	1.5%	1	0.3%	2	0.6%	0	0.0%
Pupil Personnel Services (Credential)	0	0.0%	0	0.0%	1	0.3%	0	0.0%	0	0.0%
Reading	6	1.3%	7	1.7%	8	2.1%	6	1.9%	6	1.6%
School/Educational Counseling	26	5.8%	20	4.9%	18	4.7%	26	8.1%	40	10.6%
Single Subject (Credential)	68	15.1%	37	9.1%	36	9.5%	31	9.6%	26	6.9%
Special Education	21	4.7%	6	1.5%	2	0.5%	3	0.9%	11	2.9%
Special Emphasis	54	12.0%	117	28.9%	68	17.9%	41	12.7%	42	11.1%
	295	65.7%	256	63.2%	224	59.1%	163	50.6%	196	51.9%
Major not Declared	0	0.0%	0	0.0%	0	0.0%	0	0.0%	2	0.0%
Total Masters Majors	449	100%	405	100%	379	100%	322	100%	378	99%

**B- 17: New Doctoral Students by Major/Credential at All ULV Campuses
Fall 2003 - Fall 2007**

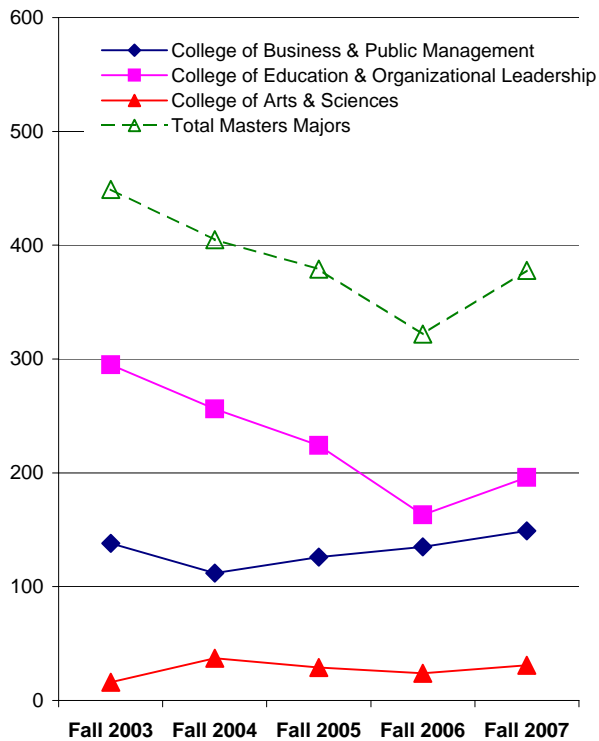
Major	Fall 2003		Fall 2004		Fall 2005		Fall 2006		Fall 2007	
Clinical-Community Psychology (PsyD)	9	14.5%	18	21.2%	18	25.7%	13	22.0%	21	23.6%
Educational/Organizational Leadership/Management (EdD)	33	53.2%	48	56.5%	32	45.7%	23	39.0%	50	56.2%
Professional Administrative Services (Credential)	3	4.8%	0	0.0%	0	0.0%	2	3.4%	0	0.0%
Public Administration (DPA)	17	27.4%	17	20.0%	20	28.6%	21	35.6%	18	20.2%
	62	100.0%	83	97.6%	70	100.0%	59	100.0%	89	100.0%
Major not Declared	0	0.0%	2	2.4%	0	0.0%	0	0.0%	0	0.0%
Total Doctoral Majors	62	100%	85	100%	70	100%	59	100%	89	100%

Source: Institutional Research Annual Census on November 15.

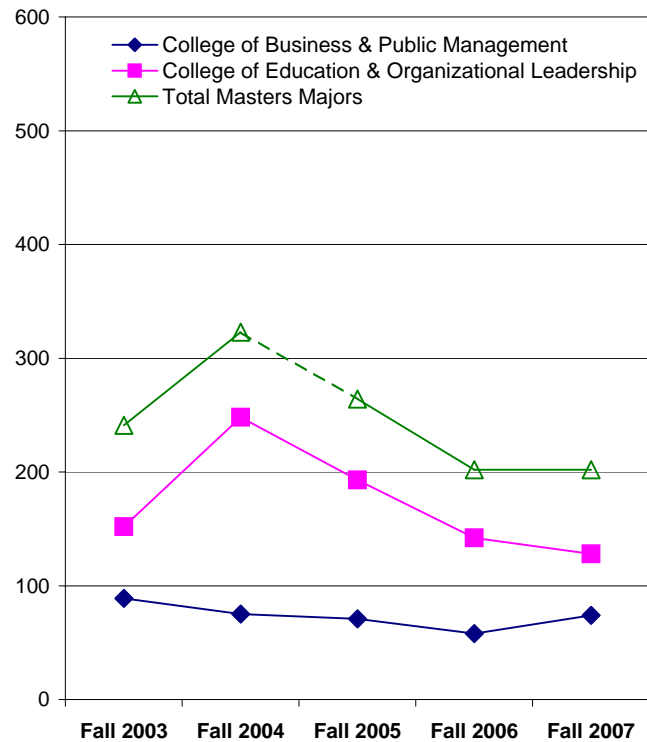
**B-18: New RCA Masters Students by Major/Credential
Fall 2003 - Fall 2007**

Major	Fall 2003	Fall 2004	Fall 2005	Fall 2006	Fall 2007
College of Business & Public Management					
Business Administration	84	62	63	49	55
Business Organizational Management	5	8	5	6	5
Health Services Administration	0	0	0	0	0
Leadership & Management	0	4	1	0	12
Public Administration	0	1	2	3	2
	89	75	71	58	74
	34.9%	23.2%	26.9%	28.7%	36.6%
College of Education & Organizational Leadership					
Child Development	5	11	22	0	0
Educational Management	23	39	29	20	7
Multiple Subject (Credential)	36	22	24	27	24
Preliminary Administrative Services (Credential)	8	13	2	2	0
Reading	0	11	2	0	0
School/Educational Counseling	43	60	54	53	68
Single Subject (Credential)	18	27	16	8	11
Special Education	0	1	4	3	1
Special Emphasis	18	39	39	29	17
Special Emphasis: Advanced Teaching Methods	1	25	1	0	0
	152	248	193	142	128
	63.1%	76.8%	73.1%	70.3%	63.4%
Major not Declared	0	0	0	2	0
	0.0%	0.0%	0.0%	1.0%	0.0%
Total Masters Majors	241	323	264	202	202
	100%	100%	100%	100%	100%

**New Main Campus Master Level Students
Fall 2003 - Fall 2007**



**New RCA Master Level Students
Fall 2003 - Fall 2007**



Source: Institutional Research Annual Census on November 15.

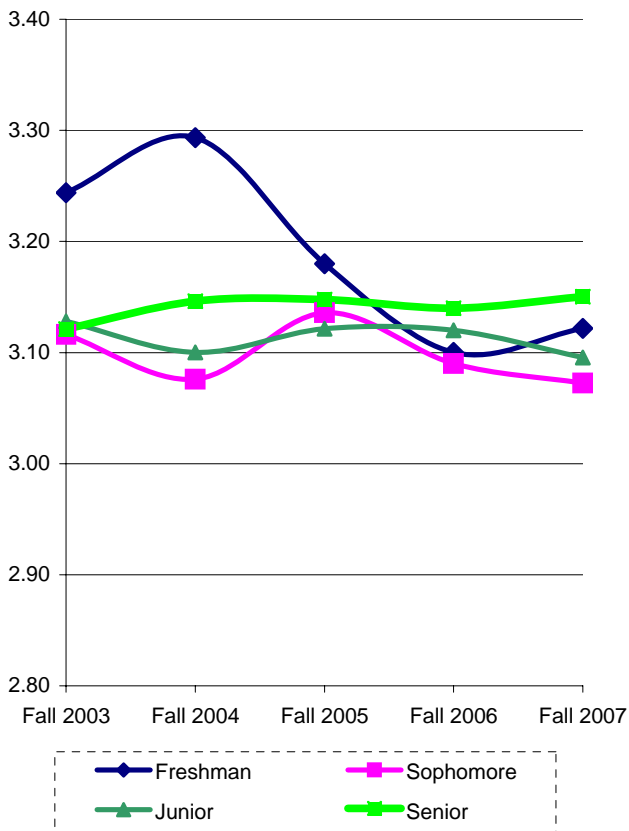
C. PERFORMANCE INDICATORS

All statistics are based on data from ULV's census on November 15 for each year specified, unless otherwise noted.

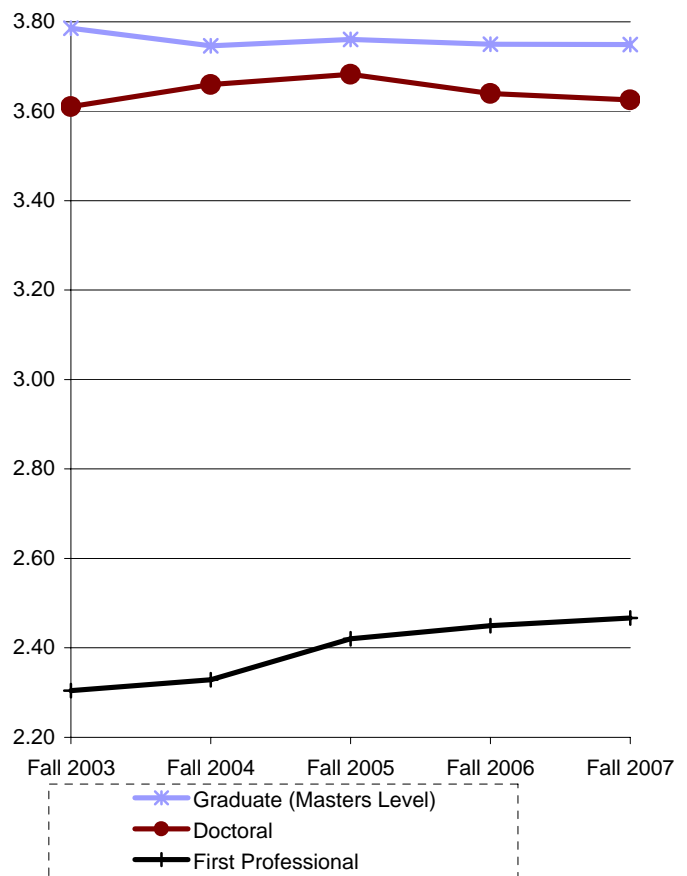
**C-1: Student Cumulative GPA by Level
Fall 2003 - Fall 2007**

Student Level	Fall 2003		Fall 2004		Fall 2005		Fall 2006		Fall 2007	
	Median	Mean	Median	Mean	Median	Mean	Median	Mean	Median	Mean
Freshman	3.40	3.24	3.43	3.29	3.30	3.18	3.22	3.10	3.30	3.12
Sophomore	3.11	3.12	3.10	3.08	3.20	3.14	3.09	3.09	3.11	3.07
Junior	3.14	3.13	3.09	3.10	3.14	3.12	3.14	3.12	3.10	3.10
Senior	3.12	3.12	3.15	3.15	3.15	3.15	3.14	3.14	3.16	3.15
Graduate (Masters Level)	3.88	3.79	3.86	3.75	3.86	3.76	3.85	3.75	3.85	3.75
Doctoral	3.66	3.61	3.72	3.66	3.74	3.68	3.71	3.64	3.71	3.63
First Professional	2.27	2.30	2.29	2.33	2.35	2.42	2.41	2.45	2.45	2.47
ULV Overall	3.48	3.38	3.43	3.35	3.43	3.36	3.42	3.35	3.41	3.34

**Means of Undergraduate Student GPA
Fall 2003 - Fall 2007**



**Means of Graduate Student GPA
Fall 2003 - Fall 2007**



Source: Institutional Research Annual Census on November 15.

C-2: Retention Rates* for Main Campus First-Time Full-Time Traditional-Age Entering Freshmen
Fall 1995 - Fall 2006**

Entering		Students Continuing at ULV											
Fall Term	FT Count	After 1 Year	After 2 Years	After 3 Years	After 4 Years	After 5 Years	After 6 Years						
1995	184	139	76%	113	61%	100	54%	28	15%	10	5%	4	2%
1996	196	153	78%	126	64%	122	62%	35	18%	10	5%	5	3%
1997	202	167	83%	149	74%	135	67%	44	22%	9	4%	7	3%
1998	321	267	83%	217	68%	195	61%	59	18%	12	4%	12	4%
1999	320	255	80%	228	71%	215	67%	50	16%	10	3%	3	1%
2000	285	236	83%	211	74%	202	71%	71	25%	14	5%	4	1%
2001	305	257	84%	234	77%	223	73%	63	21%	16	5%	8	3%
2002	294	258	88%	227	77%	227	77%	60	20%	19	6%		
2003	289	253	88%	228	79%	219	76%	125	43%				
2004	375	333	89%	300	80%	281	75%						
2005	332	267	80%	234	70%								
2006	314	266	85%										
2007	334												

C-3: Graduation Rates* for Main Campus First-Time Full-Time Traditional-Age Entering Freshmen
Fall 1995 - Fall 2003**

Entering		Students Graduating from ULV							
Fall Term	Head Count	Within 4 Years	Within 5 Years	Within 6 Years	Within 6 or More Years****				
1995	184	76	41%	78	42%	85	46%	91	49%
1996	196	60	31%	87	44%	92	47%	106	54%
1997	202	62	31%	97	48%	102	50%	113	56%
1998	321	106	33%	147	46%	157	49%	168	52%
1999	320	123	38%	159	50%	168	53%	174	54%
2000	285	93	33%	134	47%	145	51%	151	53%
2001	305	126	41%	167	55%	177	58%		
2002	294	124	42%	166	56%				
2003	289	125	43%						
2004	375								

* It is referred to the number and percent of students in a cohort who stayed. The first fall-to-fall (first-year) retention rates are often used in speeches and publications regarding retention.

** This first-time, full-time, degree-seeking first-year students (freshmen) cohort is often referred as GRS (Graduation Rates) Cohort in research on retention rates and graduation rates.

*** It is referred to the number and percent of students in a cohort who graduated. The graduation dates for an specific year are between between September 1 and August 31, as defined by IPEDS.

**** The numbers and percentages in this column are cumulative, which include everyone who has ever graduated of that cohort.

Source: Institutional Research Annual Census on November 15.

**C-4: The First Fall-to-Fall (First-Year) Retention Rates for Main Campus First-Time Full-Time Traditional-Age Freshmen by Ethnicity*
Fall 1995 - Fall 2006**

Cohort	Caucasian			African-American			Hispanic/ Latino			Asian/Pacific Islander			Other			Ethnicity Unknown		
	1st Fall	2nd Fall	Rate	1st Fall	2nd Fall	Rate	1st Fall	2nd Fall	Rate	1st Fall	2nd Fall	Rate	1st Fall	2nd Fall	Rate	1st Fall	2nd Fall	Rate
1995	77	54	70%	20	16	80%	61	50	82%	23	17	74%	3	2	67%	0	0	-
1996	75	62	83%	19	15	79%	81	63	78%	15	8	53%	5	4	80%	1	1	100%
1997	86	72	84%	20	15	75%	62	52	84%	12	10	83%	17	16	94%	5	2	40%
1998	125	98	78%	26	23	88%	118	106	90%	22	16	73%	26	21	81%	4	3	75%
1999	114	86	75%	31	28	90%	112	96	86%	28	20	71%	20	12	60%	15	13	87%
2000	117	90	77%	32	29	91%	88	78	89%	22	16	73%	6	4	67%	20	19	95%
2001	105	83	79%	19	17	89%	125	108	86%	20	19	95%	8	4	50%	28	26	93%
2002	92	81	88%	24	22	92%	117	106	91%	14	12	86%	5	2	40%	41	34	83%
2003	106	91	86%	23	21	91%	119	104	87%	15	15	100%	15	14	93%	11	8	73%
2004	129	118	91%	31	25	81%	152	133	88%	12	11	92%	26	23	88%	25	23	92%
2005	98	79	81%	31	21	68%	130	108	83%	15	12	80%	25	19	76%	33	28	85%
2006	95	81	85%	22	17	77%	138	116	84%	16	14	88%	19	15	79%	24	23	96%

* The first fall-to-fall (first-year) retention rate calculates the percentage of students who stay in the second Fall after they entered ULV in a given Fall term.

Source: Institutional Research Annual Census on November 15.

**C-5: Graduation Rates (Within 6 Years) for Main Campus First-Time Full-Time Traditional-Age Freshmen by Ethnicity
Fall 1995 - Fall 2003**

Cohort	Caucasian			African-American			Hispanic/ Latino			Asian/Pacific Islander			Other			Ethnicity Unknown		
	Total	Graduated	Rate	Total	Graduated	Rate	Total	Graduated	Rate	Total	Graduated	Rate	Total	Graduated	Rate	Total	Graduated	Rate
1995	77	30	39%	20	7	35%	61	34	56%	23	12	52%	3	2	67%	0	0	-
1996	75	39	52%	19	5	26%	81	40	49%	15	4	27%	5	2	40%	1	1	100%
1997	86	49	57%	20	9	45%	62	29	47%	12	4	33%	17	9	53%	5	2	40%
1998	125	56	45%	26	15	58%	118	65	55%	22	6	27%	26	13	50%	4	2	50%
1999	114	62	54%	31	16	52%	112	65	58%	28	10	36%	20	6	30%	15	9	60%
2000	117	59	50%	32	18	56%	88	46	52%	22	9	41%	6	1	17%	20	11	55%
2001	105	60	57%	19	12	63%	125	71	57%	20	12	60%	8	3	38%	28	19	68%
2002*	92	50	54%	24	14	58%	117	69	59%	14	9	64%	5	1	20%	41	23	56%
2003**	106	47	44%	23	9	39%	119	51	43%	15	7	47%	15	6	40%	11	5	45%

* Graduation Rates are within 5 years for the cohort.

** Graduation Rates are within 4 years for the cohort.

Source: Institutional Research Annual Census on November 15.

**C-6: Retention Rates for Main Campus Full-Time Undergraduate Transfer Students*
Fall 1995 - Fall 2006**

Fall Term	FT Count	Students Continuing at ULV											
		After 1 Year	After 2 Years	After 3 Years	After 4 Years	After 5 Years	After 6 Years	After 1 Year	After 2 Years	After 3 Years	After 4 Years	After 5 Years	After 6 Years
1995	124	89	72%	46	37%	19	15%	5	4%	1	1%	1	1%
1996	136	90	66%	43	32%	21	15%	7	5%	0	0%	2	1%
1997	114	78	68%	41	36%	12	11%	5	4%	0	0%	0	0%
1998	136	103	76%	56	41%	15	11%	3	2%	1	1%	0	0%
1999	117	96	82%	48	41%	25	21%	7	6%	1	1%	1	1%
2000	129	95	74%	42	33%	12	9%	5	4%	3	2%	1	1%
2001	108	88	81%	39	36%	9	8%	2	2%	1	1%	0	0%
2002	110	83	75%	48	44%	13	12%	2	2%	2	2%		
2003	105	89	85%	43	41%	10	10%	1	1%				
2004	160	130	81%	65	41%	19	12%						
2005	127	110	87%	54	43%								
2006	136	104	76%										
2007	126												

Source: Institutional Research Annual Census on November 15.

**C-7: Graduation Rates for Main Campus Full-Time Undergraduate Transfer Students*
Fall 1995 - Fall 2005**

Fall Term	Head Count	Students Graduating from ULV										Within 6 or More Years**	
		Within 2 Years	Within 3 Years	Within 4 Years	Within 5 Years	Within 6 Years	Within 2 Years	Within 3 Years	Within 4 Years	Within 5 Years	Within 6 Years	Within 6 or More Years**	
1995	124	24	19%	43	35%	60	48%	60	48%	61	49%	65	52%
1996	136	23	17%	42	31%	52	38%	59	43%	61	45%	65	48%
1997	114	23	20%	47	41%	57	50%	63	55%	63	55%	65	57%
1998	136	31	23%	59	43%	71	52%	75	55%	75	55%	76	56%
1999	117	26	22%	49	42%	59	50%	66	56%	66	56%	68	58%
2000	129	33	26%	57	44%	66	51%	74	57%	77	60%	80	62%
2001	108	29	27%	57	53%	63	58%	67	62%	68	63%	68	63%
2002	110	22	20%	52	47%	59	54%	61	55%				
2003	105	31	30%	59	56%	63	60%						
2004	160	54	34%	90	56%								
2005	127	47	37%										
2006	136												

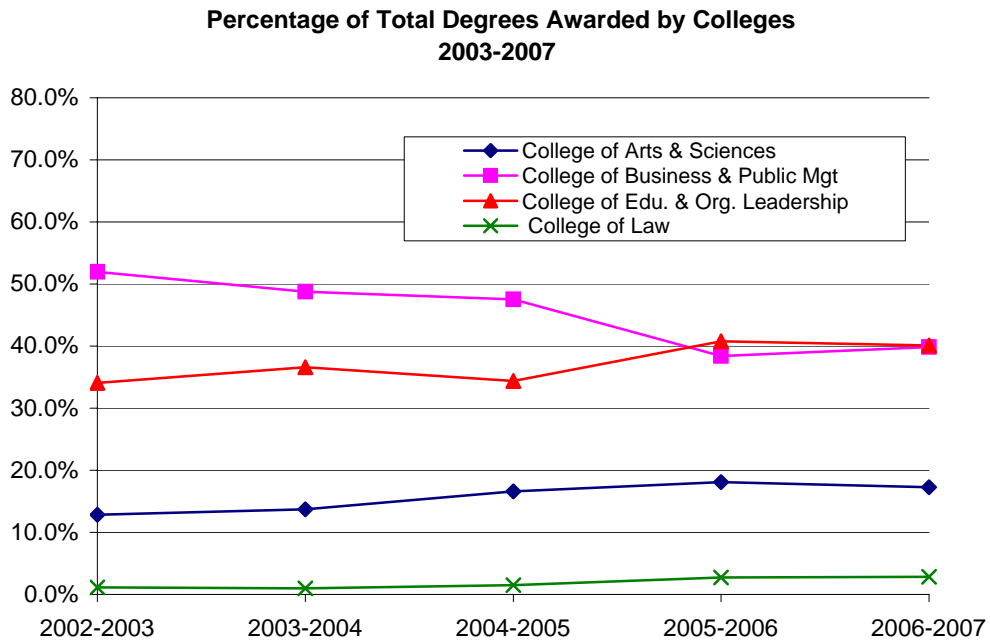
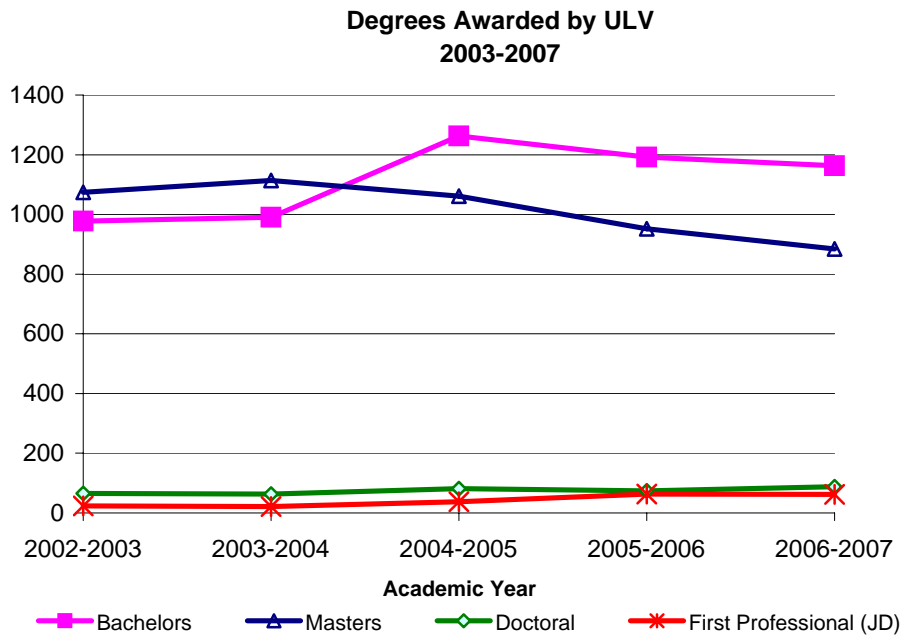
* Does not include CAPA.

** The numbers and percentages in this column are cumulative, which include everyone who has ever graduated of that cohort.

Source: Institutional Research Annual Census on November 15.

**C-8: Degrees Awarded by ULV between July 1 and June 30
2003 - 2007**

Degree Awarded	2002-2003		2003-2004		2004-2005		2005-2006		2006-2007	
Associate	3	0.1%	3	0.1%	2	0.1%	1	0.0%	1	0.0%
Bachelors	978	45.6%	990	45.2%	1263	51.7%	1192	52.2%	1163	52.9%
Masters	1074	50.1%	1114	50.8%	1061	43.4%	952	41.7%	884	40.2%
Doctoral	65	3.0%	63	2.9%	81	3.3%	74	3.2%	88	4.0%
First Professional (JD)	24	1.1%	21	1.0%	37	1.5%	63	2.8%	62	2.8%
Total	2144	100%	2191	100%	2444	100%	2282	100%	2198	100%



Source: Institutional Research Annual Census on November 15.

**C-9: Bachelors Degrees Conferred to ULV Students
2003 - 2007**

Major	2002-2003		2003-2004		2004-2005		2005-2006		2006-2007	
College of Arts & Sciences										
Athletic Training	1	0.1%	3	0.3%	3	0.2%	7	0.6%	9	0.8%
Anthropology	1	0.1%	1	0.1%	2	0.2%	3	0.3%	0	0.0%
Art	4	0.4%	8	0.8%	8	0.6%	6	0.5%	8	0.7%
Art History	1	0.1%	0	0.0%	0	0.0%	1	0.1%	2	0.2%
Behavioral Science	10	1.0%	11	1.1%	20	1.6%	19	1.6%	9	0.8%
Biology	8	0.8%	10	1.0%	5	0.4%	8	0.7%	7	0.6%
Broadcasting	12	1.2%	12	1.2%	16	1.3%	9	0.8%	12	1.0%
Chemistry	3	0.3%	2	0.2%	2	0.2%	3	0.3%	3	0.3%
Communications	9	0.9%	14	1.4%	13	1.0%	16	1.3%	16	1.4%
Computer Science & Engineering	11	1.1%	19	1.9%	23	1.8%	14	1.2%	9	0.8%
Criminology	32	3.3%	17	1.7%	41	3.2%	38	3.2%	34	2.9%
English	15	1.5%	13	1.3%	19	1.5%	18	1.5%	19	1.6%
Environmental Biology	1	0.1%	1	0.1%	0	0.0%	0	0.0%	1	0.1%
Environmental Management	0	0.0%	0	0.0%	1	0.1%	0	0.0%	0	0.0%
French	0	0.0%	0	0.0%	0	0.0%	0	0.0%	2	0.2%
History	10	1.0%	2	0.2%	7	0.6%	6	0.5%	13	1.1%
International Business & Language	2	0.2%	7	0.7%	4	0.3%	3	0.3%	6	0.5%
International Studies	2	0.2%	0	0.0%	0	0.0%	2	0.2%	1	0.1%
Journalism	13	1.3%	4	0.4%	6	0.5%	14	1.2%	13	1.1%
Legal/Paralegal Studies	12	1.2%	12	1.2%	12	1.0%	19	1.6%	20	1.7%
Liberal Arts	1	0.1%	1	0.1%	1	0.1%	6	0.5%	4	0.3%
Mathematics	2	0.2%	3	0.3%	4	0.3%	1	0.1%	3	0.3%
Movement & Sports Science/Phys Ed	14	1.4%	17	1.7%	24	1.9%	20	1.7%	17	1.5%
Music	1	0.1%	2	0.2%	4	0.3%	7	0.6%	3	0.3%
Natural Science	0	0.0%	0	0.0%	1	0.1%	0	0.0%	0	0.0%
Philosophy	0	0.0%	0	0.0%	2	0.2%	2	0.2%	1	0.1%
Physics	1	0.1%	2	0.2%	0	0.0%	0	0.0%	2	0.2%
Political Science	9	0.9%	10	1.0%	27	2.1%	16	1.3%	10	0.9%
Psychology	40	4.1%	50	5.1%	77	6.1%	77	6.5%	71	6.1%
Religion	2	0.2%	3	0.3%	2	0.2%	3	0.3%	0	0.0%
Religion & Philosophy	1	0.1%	1	0.1%	3	0.2%	1	0.1%	1	0.1%
Social Science	10	1.0%	8	0.8%	7	0.6%	3	0.3%	6	0.5%
Sociology	13	1.3%	11	1.1%	9	0.7%	30	2.5%	0	0.0%
Spanish	1	0.1%	2	0.2%	2	0.2%	2	0.2%	20	1.7%
Speech Communication	1	0.1%	5	0.5%	5	0.4%	5	0.4%	9	0.8%
Theatre Arts	0	0.0%	1	0.1%	1	0.1%	2	0.2%	3	0.3%
Student Designed Majors	1	0.1%	0	0.0%	0	0.0%	2	0.2%	0	0.0%
	244	24.9%	252	25.5%	351	27.8%	363	30.5%	334	28.7%
College of Business & Public Management										
Accounting	24	2.5%	13	1.3%	18	1.4%	22	1.8%	21	1.8%
Business Administration	297	30.4%	271	27.4%	337	26.7%	251	21.1%	228	19.6%
Business Management	1	0.1%	0	0.0%	1	0.1%	0	0.0%	0	0.0%
E-Commerce	0	0.0%	0	0.0%	0	0.0%	2	0.2%	2	0.2%
Economics	6	0.6%	6	0.6%	11	0.9%	6	0.5%	7	0.6%
Health Administration	33	3.4%	26	2.6%	32	2.5%	33	2.8%	17	1.5%
Marketing	13	1.3%	6	0.6%	17	1.3%	4	0.3%	2	0.2%
Organizational Management	176	18.0%	180	18.2%	210	16.6%	163	13.7%	182	15.6%
Public Administration	30	3.1%	25	2.5%	25	2.0%	31	2.6%	24	2.1%
Student Designed Majors	0	0.0%	0	0.0%	0	0.0%	1	0.1%	0	0.0%
	580	59.3%	527	53.2%	651	51.5%	513	43.0%	483	41.5%
College of Education & Organizational Leadership										
Child Development	32	3.3%	42	4.2%	101	8.0%	105	8.8%	146	12.6%
Child Development/Life	1	0.1%	0	0.0%	0	0.0%	0	0.0%	0	0.0%
Liberal Studies	121	12.4%	169	17.1%	160	12.7%	211	17.7%	200	17.2%
	154	15.7%	211	21.3%	261	20.7%	316	26.5%	346	29.8%
Total Bachelors Degrees Conferred	978	100%	990	100%	1263	100%	1192	100%	1163	100%

Source: Institutional Research Annual Census on November 15.

**C-10: Masters Degrees Awarded by ULV
Fall 2003 - Fall 2007**

Major	2002-2003		2003-2004		2004-2005		2005-2006		2006-2007	
College of Arts & Sciences										
Counseling	15	1.4%	24	2.2%	18	1.7%	16	1.7%	6	0.7%
Counseling/Marriage & Family Therapy (MFT)	4	0.4%	15	1.3%	17	1.6%	14	1.5%	18	2.0%
Counseling (Special Emphasis)	4	0.4%	1	0.1%	3	0.3%	4	0.4%	1	0.1%
Psychology	6	0.6%	1	0.1%	9	0.8%	1	0.1%	0	0.0%
	29	2.7%	41	3.7%	47	4.4%	35	3.7%	25	2.8%
College of Business & Public Management										
Business Administration	369	34.4%	365	32.8%	367	34.6%	266	27.8%	263	29.8%
Business Information Technology	2	0.2%	7	0.6%	11	1.0%	3	0.3%	4	0.5%
Business Organizational Management	67	6.2%	62	5.6%	41	3.9%	9	0.9%	18	2.0%
Gerontology	12	1.1%	8	0.7%	8	0.8%	12	1.3%	14	1.6%
Health Administration	8	0.7%	1	0.1%	1	0.1%	0	0.0%	7	0.8%
Health Services Administration	22	2.0%	22	2.0%	24	2.3%	18	1.9%	7	0.8%
International Administration	1	0.1%	0	0.0%	0	0.0%	0	0.0%	0	0.0%
Leadership & Management	25	2.3%	41	3.7%	25	2.4%	28	2.9%	38	4.3%
Public Administration	11	1.0%	15	1.3%	19	1.8%	15	1.6%	31	3.5%
	517	48.1%	521	46.8%	496	46.7%	351	36.7%	382	43.2%
College of Education & Organizational Leadership										
Child Development	4	0.4%	14	1.3%	3	0.3%	22	2.3%	32	3.6%
Child Development/Life	1	0.1%	4	0.4%	0	0.0%	0	0.0%		0.0%
Child Life	6	0.6%	0	0.0%	6	0.6%	11	1.2%	13	1.5%
Educational Management	96	8.9%	98	8.8%	93	8.8%	98	10.3%	78	8.8%
Reading	14	1.3%	13	1.2%	25	2.4%	21	2.2%	23	2.6%
School/Educational Counseling	209	19.5%	197	17.7%	144	13.6%	153	16.0%	115	13.0%
Special Education	0	0.0%	0	0.0%	0	0.0%	0	0.0%	4	0.5%
Special Emphasis	175	16.3%	193	17.3%	240	22.6%	210	22.0%	206	23.3%
Special Emphasis: Adv. Teaching Methods	22	2.0%	32	2.9%	7	0.7%	55	5.8%	5	0.6%
Student Designed Majors	1	0.1%	1	0.1%	0	0.0%	0	0.0%	1	0.1%
	528	49.2%	552	49.6%	518	48.8%	570	59.6%	477	54.0%
Total Masters Degrees Conferred	1074	100%	1114	100%	1061	100%	956	100%	884	100%

**C-11: Doctoral Degrees Conferred by ULV
2003 - 2007**

Major	2002-2003		2003-2004		2004-2005		2005-2006		2006-2007	
Clinical-Community Psychology (PsyD)	1	1.8%	6	10.3%	7	8.6%	15	20.3%	20	22.7%
Educational/Organizational Leadership/Management (EdD)	45	78.9%	36	62.1%	60	74.1%	46	62.2%	58	65.9%
Public Administration (DPA)	11	19.3%	16	27.6%	14	17.3%	13	17.6%	10	11.4%
Total Doctoral Degrees Conferred	57	100%	58	100%	81	100%	74	100%	88	100%

**C-12: First Professional Degrees Conferred by ULV
2003 - 2007**

Major	2002-2003		2003-2004		2004-2005		2005-2006		2006-2007	
Juris Doctor (JD)	24	100%	21	100%	37	100%	63	100%	62	100%
Total Professional Degrees Conferred	24	100%	21	100%	37	100%	63	100%	62	100%

Source: Institutional Research Annual Census on November 15.

D. FACULTY AND STAFF

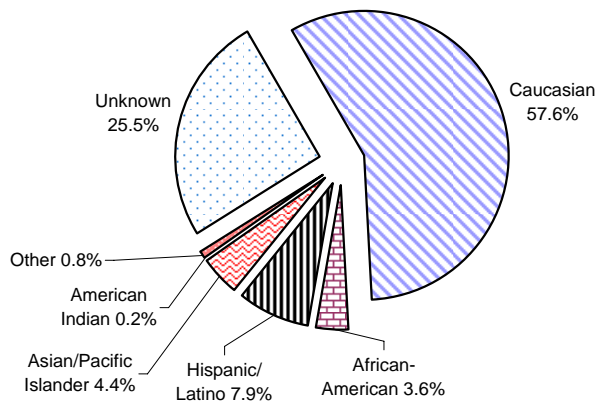
All statistics are based on data from ULV's census on November 15 for each year specified, unless otherwise noted.

D-1: Gender and Ethnicity of ULV Faculty by Full-Time and Part-Time Status Fall 2007

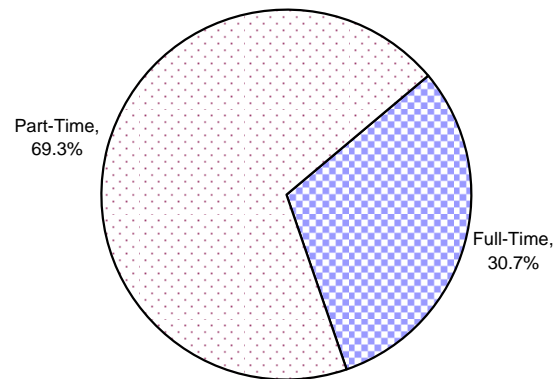
Ethnicity

Faculty	Caucasian		African-American		Hispanic/Latino		Asian/Pacific Islander		American Indian		Other		Ethnicity Unknown		Total	
Full-Time																
Male	79	55.2%	4	57.1%	6	42.9%	7	46.7%	0	0.0%	0	0.0%	6	0.0%	102	52.6%
Female	64	44.8%	3	42.9%	8	57.1%	8	53.3%	0	0.0%	0	0.0%	9	0.0%	92	47.4%
Total	143	100.0%	7	100.0%	14	100.0%	15	100.0%	0	0.0%	0	0.0%	15	0.0%	194	100.0%
Part-Time																
Male	123	55.7%	10	62.5%	17	47.2%	6	46.2%	0	0.0%	1	20.0%	61	41.8%	218	49.8%
Female	98	44.3%	6	37.5%	19	52.8%	7	53.8%	1	100.0%	4	80.0%	80	54.8%	215	49.1%
Unknown	0	0.0%	0	0.0%	0	0.0%	0	0.0%	0	0.0%	0	0.0%	5	3.4%	5	1.1%
Total	221	100.0%	16	100.0%	36	100.0%	13	100.0%	1	100.0%	5	100.0%	146	100.0%	438	100.0%
All U.S. Faculty																
Male	202	55.5%	14	60.9%	23	46.0%	13	46.4%	0	0.0%	1	20.0%	67	41.6%	320	50.6%
Female	162	44.5%	9	39.1%	27	54.0%	15	53.6%	1	100.0%	4	80.0%	89	55.3%	307	48.6%
Unknown	0	0.0%	0	0.0%	0	0.0%	0	0.0%	0	0.0%	0	0.0%	5	3.1%	5	0.8%
Total	364	100.0%	23	100.0%	50	100.0%	28	100.0%	1	100.0%	5	100.0%	161	100.0%	632	100.0%

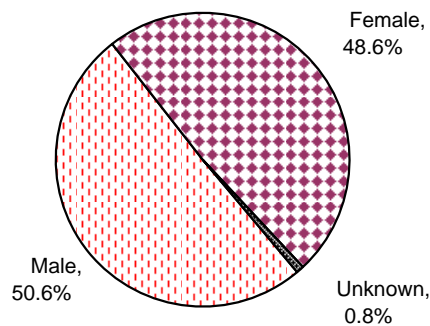
Ethnicity of All ULV Faculty - Fall 2007



Teaching Status of All ULV Faculty - Fall 2007



Gender of ULV Faculty - Fall 2007



Source: Full-time, Academic Affairs Office (prior to Fall 2006) and Human Resource (Fall 2006 and after); Part-Time, Institutional Research Census on November 15.

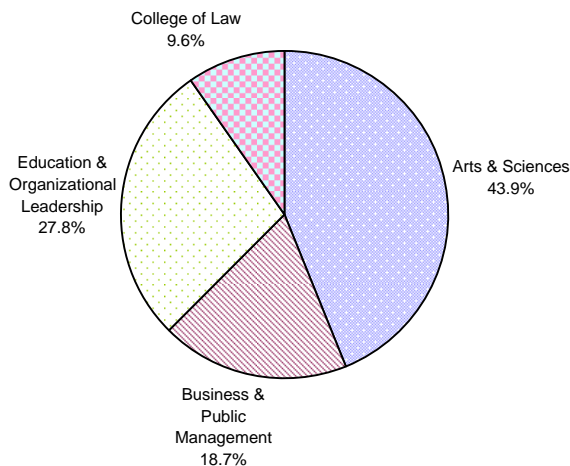
D-2: College and Rank of Full-Time Faculty Fall 2003-Fall 2007

College/School	Rank	Fall 2003		Fall 2004		Fall 2005		Fall 2006		Fall 2007	
College of Arts & Sciences	Professor	41	45.6%	41	45.1%	39	42.9%	36	43.4%	37	45.1%
	Associate Professor	25	27.8%	33	36.3%	39	42.9%	31	37.3%	29	35.4%
	Assistant Professor	24	26.7%	17	18.7%	12	13.2%	16	19.3%	16	19.5%
	Instructor	0	0.0%	0	0.0%	1	1.1%	0	0.0%	0	0.0%
Total		90	100.0%	91	100.0%	91	100.0%	83	100.0%	82	100.0%
College of Business & Public Management	Professor	13	41.9%	17	50.0%	17	50.0%	20	57.1%	22	62.9%
	Associate Professor	10	32.3%	6	17.6%	14	41.2%	12	34.3%	9	25.7%
	Assistant Professor	8	25.8%	10	29.4%	3	8.8%	2	5.7%	3	8.6%
	Visiting Professor	1	3.2%	1	2.9%	0	0.0%	1	2.9%	0	0.0%
	Instructor	0	0.0%	0	0.0%	0	0.0%	0	0.0%	1	2.9%
Total		31	100.0%	34	100.0%	34	100.0%	35	100.0%	35	100.0%
College of Education & Organizational Leadership	Professor	15	36.6%	14	35.0%	15	33.3%	16	31.4%	14	26.9%
	Associate Professor	9	22.0%	11	27.5%	12	26.7%	14	27.5%	14	26.9%
	Assistant Professor	17	41.5%	15	37.5%	18	40.0%	21	41.2%	24	46.2%
	Total	41	100.0%	40	100.0%	45	100.0%	51	100.0%	52	100.0%
College of Law	Professor	7	43.8%	7	43.8%	8	47.1%	11	64.7%	11	61.1%
	Associate Professor	5	31.3%	5	31.3%	5	29.4%	3	17.6%	3	16.7%
	Assistant Professor	3	18.8%	2	12.5%	2	11.8%	3	17.6%	4	22.2%
	Visiting Professor	1	6.3%	2	12.5%	2	11.8%	0	0.0%	0	0.0%
Total		16	100.0%	16	100.0%	17	100.0%	17	100.0%	18	100.0%
Wilson Library*	Professor							1	12.5%	0	0.0%
	Associate Professor							5	62.5%	4	57.1%
	Assistant Professor							0	0.0%	2	28.6%
	Instructor							2	25.0%	1	14.3%
Total								8	100.0%	7	100.0%
All Colleges & Schools	Professor	76	42.5%	79	43.6%	79	42.2%	84	43.3%	84	43.3%
	Associate Professor	49	27.4%	55	30.4%	70	37.4%	65	33.5%	59	30.4%
	Assistant Professor	52	29.1%	44	24.3%	35	18.7%	42	21.6%	49	25.3%
	Visiting Professor	2	1.1%	3	1.7%	2	1.1%	1	0.5%	1	0.5%
	Instructor	0	0.0%	0	0.0%	1	0.5%	2	1.0%	1	0.5%
Total		179	98.9%	181	100.0%	187	100.0%	194	100.0%	194	100.0%

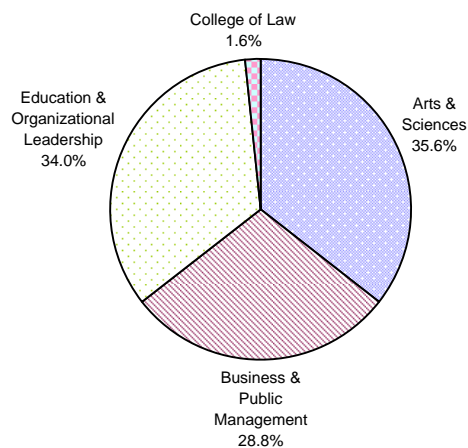
* The faculty of Wilson Library was included in College of Arts & Science before Fall 2006.

Source: Academic Affairs Office (Fall 2002- Fall 2005) and Human Resource (Fall 2006 and after).

Full-Time Faculty by College - Fall 2007



Part-Time Faculty by College - Fall 2007



D-3: Highest Degree of Full-Time Faculty Fall 2003 - Fall 2007

Highest Degree	Fall 2003		Fall 2004		Fall 2005		Fall 2006		Fall 2007	
BA	1	0.6%	1	0.6%	1	0.5%	1	0.5%	1	0.5%
BCL**	0	0.0%	0	0.0%	1	0.5%	0	0.0%	0	0.0%
BS	1	0.6%	0	0.0%	0	0.0%	0	0.0%	0	0.0%
DA*	1	0.6%	1	0.6%	1	0.5%	1	0.5%	1	0.5%
DMA*	2	1.1%	2	1.1%	2	1.1%	1	0.5%	1	0.5%
DPA*	2	1.1%	2	1.1%	2	1.1%	2	1.0%	2	1.0%
EdD*	22	12.3%	24	13.3%	26	13.9%	25	12.9%	24	12.4%
JD*	17	9.5%	19	10.5%	20	10.7%	22	11.3%	24	12.4%
LLB*	1	0.6%	1	0.6%	1	0.5%	2	1.0%	1	0.5%
LLM*	1	0.6%	1	0.6%	1	0.5%	1	0.5%	0	0.0%
MA	13	7.3%	13	7.2%	15	8.0%	14	7.2%	19	9.8%
MA* (PEPPIT Criteria)	3	1.7%	2	1.1%	2	1.1%	1	0.5%	0	0.0%
MBA	1	0.6%	1	0.6%	1	0.5%	1	0.5%	0	0.0%
MBA* (PEPPIT Criteria)	2	1.1%	2	1.1%	2	1.1%	2	1.0%	3	1.5%
MEd	1	0.6%	1	0.6%	3	1.6%	3	1.5%	3	1.5%
MEd* (PEPPIT Criteria)	1	0.6%	1	0.6%	1	0.5%	1	0.5%	0	0.0%
MFA*	4	2.2%	4	2.2%	4	2.1%	6	3.1%	5	2.6%
MLA	0	0.0%	0	0.0%	0	0.0%	1	0.5%	1	0.5%
MLIS*	1	0.6%	1	0.6%	0	0.0%	0	0.0%	0	0.0%
MLS	1	0.6%	1	0.6%	0	0.0%	1	0.5%	3	1.5%
MLS* (PEPPIT Criteria)	1	0.6%	1	0.6%	1	0.5%	1	0.5%	0	0.0%
MS	13	7.3%	11	6.1%	12	6.4%	14	7.2%	14	7.2%
MS* (PEPPIT Criteria)	5	2.8%	4	2.2%	4	2.1%	1	0.5%	2	1.0%
MSLS	0	0.0%	0	0.0%	0	0.0%	1	0.5%	1	0.5%
MST*	1	0.6%	0	0.0%	0	0.0%	0	0.0%	0	0.0%
PhD*	84	46.9%	88	48.6%	87	46.5%	92	47.4%	89	45.9%
Total	179	100%	181	100%	187	100%	194	100%	194	100%

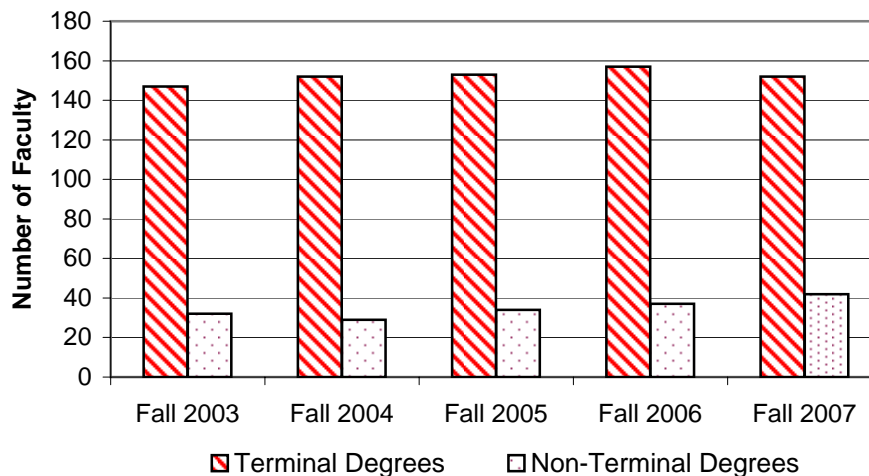
***Terminal Degrees** **147** **82.1%** **152** **84.0%** **153** **81.8%** **157** **80.9%** **152** **78.4%**

** Bachelor of Civil Law

Note: DA was not considered as terminal degree prior to Fall 2007.

Source: Academic Affairs Office (Fall 2002- Fall 2005) and Human Resource (Fall 2006 and after).

**Highest Degree of Full-Time Faculty
Fall 2003 - Fall 2007**

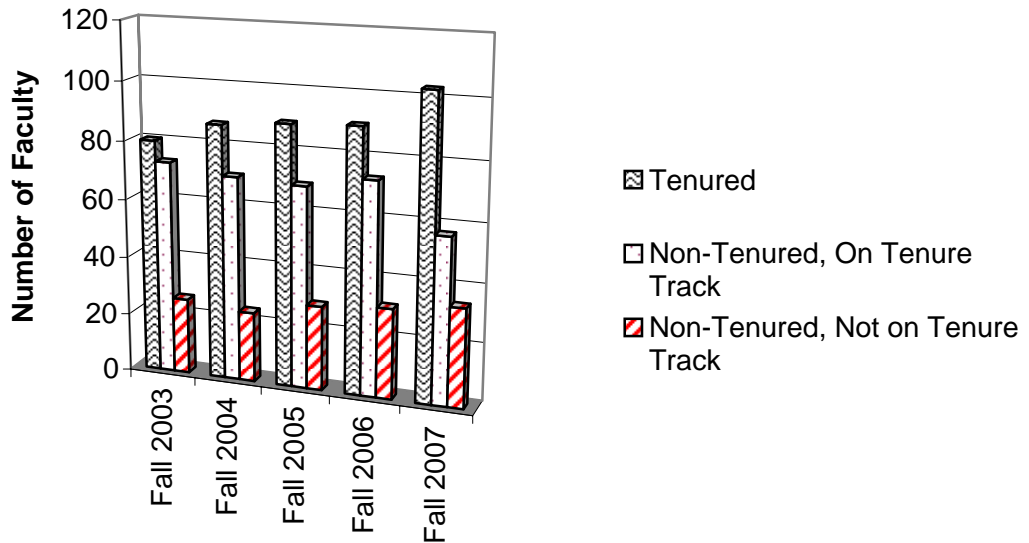


D-4: Tenure Status of Full-Time Faculty Fall 2003 - Fall 2007

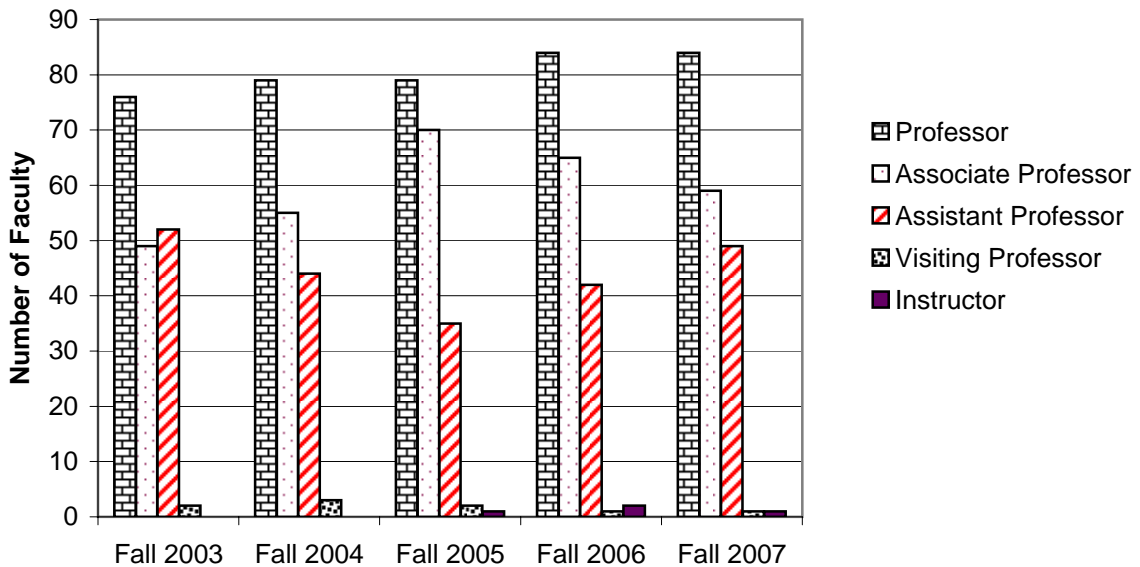
Tenure Status	Fall 2003		Fall 2004		Fall 2005		Fall 2006		Fall 2007	
Tenured	80	44.7%	87	48.1%	89	47.6%	90	46.4%	103	53.1%
Non-Tenured (On Tenure Track)	73	40.8%	70	38.7%	69	36.9%	73	37.6%	57	29.4%
Non-Tenured (Not on Tenure Track)	26	14.5%	24	13.3%	29	15.5%	31	16.0%	34	17.5%
Total	179	100%	181	100%	187	100%	194	100%	194	100%

Source: Academic Affairs Office (Fall 2002- Fall 2005) and Human Resource (Fall 2006 and after).

Tenure Status of Full-Time Faculty



Rank of Full-Time Faculty

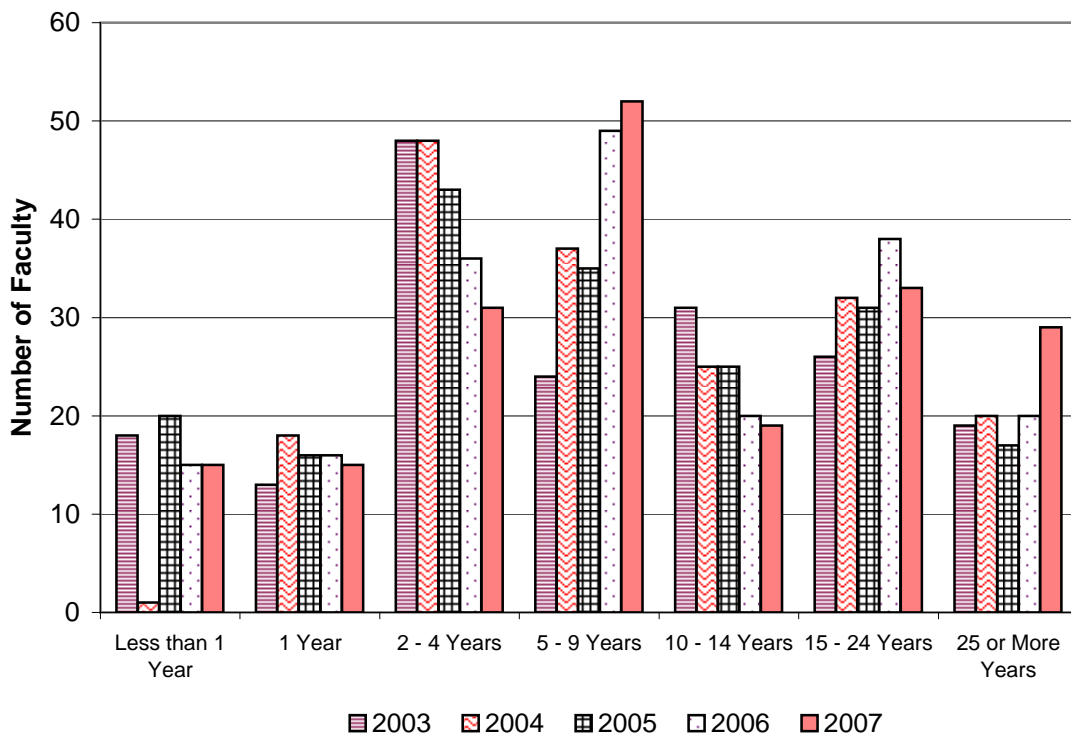


D-5: Years of Service of Full-Time Faculty Fall 2003 - Fall 2007

Years at ULV	2003	2004	2005	2006	2007
Less than 1 Year	18	1	20	15	15
1 Year	13	18	16	16	15
2 - 4 Years	48	48	43	36	31
5 - 9 Years	24	37	35	49	52
10 - 14 Years	31	25	25	20	19
15 - 24 Years	26	32	31	38	33
25 or More Years	19	20	17	20	29
Total Faculty	179	181	187	194	194

Source: Academic Affairs Office (Fall 2003- Fall 2005) and Human Resource (Fall 2006 and after).

**Years of Service of Full-Time Faculty
Fall 2003 - Fall 2007**



D-6: Gender, Ethnicity, and Appointment Status of ULV Regularly-Contracted Staff by Position - Fall 2007

By Gender and Position

Gender	Administrative/Professional		Classified		All Positions	
Male	87	39.7%	57	31.5%	144	36.0%
Female	132	60.3%	124	68.5%	256	64.0%
Total	219	100.0%	181	100.0%	400	100.0%

By Ethnicity and Position

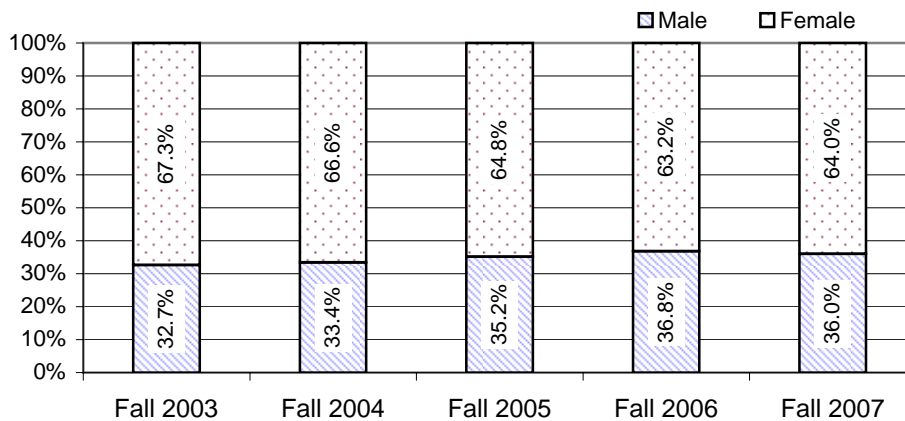
Ethnicity	Administrative/Professional		Classified		All Positions	
Black, Non-Hispanic	19	8.7%	14	7.7%	33	8.3%
American Indian/Alaskan Native	1	0.5%	2	1.1%	3	0.8%
Asian/Pacific Islander	17	7.8%	19	10.5%	36	9.0%
Hispanic	32	14.6%	53	29.3%	85	21.3%
White, non-Hispanic	135	61.6%	91	50.3%	226	56.5%
Unknown	15	6.8%	2	1.1%	17	4.3%
Total	219	100.0%	181	100.0%	400	100.0%

By Appointment and Position

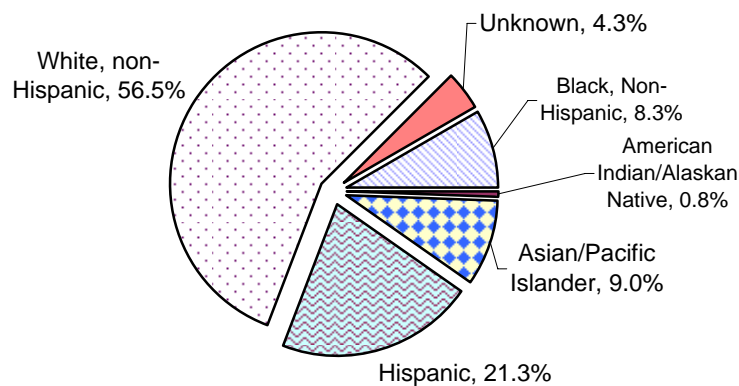
Appointment Status	Administrative/Professional		Classified		All Positions	
Full-Time	203	92.7%	170	93.9%	373	93.3%
Part-Time	16	7.3%	11	6.1%	27	6.8%
Total Staff	219	100.0%	181	100.0%	400	100.0%

Source: Human Resources

Staff by Gender (Fall 2003 - Fall 2007)



Staff by Ethnicity - Fall 2007



E.
FINANCE
AND
FINANCIAL
AID

E-1: Finances for Fiscal Year 2002-03 through 2006-07

Assets	2002-03	2003-04	2004-05	2005-06	2006-07
Current Assets	55,340,261	60,320,398	64,818,655	78,089,346	92,466,119
Property, plant and equipment:					
Land	6,690,094	6,894,401	8,595,901	8,595,901	8,595,901
Buildings and improvements	47,044,205	47,884,017	49,520,017	54,232,327	61,154,112
Equipment	15,909,389	17,433,187	19,012,448	25,081,342	28,246,055
Asset Retirement capitalized costs				125,727	119,263
Construction in progress	<u>980,374</u>	<u>1,026,038</u>	<u>1,813,678</u>	<u>4,211,422</u>	<u>2,323,249</u>
	70,624,062	73,237,643	78,942,044	92,246,719	100,438,580
Less: Accumulated depreciation	(30,187,517)	(34,199,909)	(38,289,986)	(42,915,014)	(47,961,127)
Total property, plant and equipment	<u>40,436,545</u>	<u>39,037,734</u>	<u>40,652,058</u>	<u>49,331,705</u>	<u>52,477,453</u>
Total assets	\$95,776,806	\$99,358,132	105,470,713	\$127,421,051	\$144,943,572
Liabilities and Net Assets					
Liabilities	41,201,795	41,019,832	43,487,181	53,273,155	54,887,124
Net Assets	<u>54,575,011</u>	<u>58,338,300</u>	<u>61,983,532</u>	<u>74,147,896</u>	<u>90,056,448</u>
Total liabilities and net assets	\$95,776,806	\$99,358,132	105,470,713	\$127,421,051	\$144,943,572
Student Grants					
Pell grants	3,222,383	3,404,476	3,949,240	3,612,718	3,382,443
Other federal grants	867,623	1,079,653	987,862	857,065	769,219
State grants	6,535,132	6,585,254	7,685,589	7,985,972	7,443,366
Funded institutional grants	674,942	730,651	755,282	720,954	724,667
Unfunded institutional grants	<u>10,421,262</u>	<u>10,582,620</u>	<u>14,686,639</u>	<u>14,781,382</u>	<u>12,484,694</u>
Total student grants	21,721,342	22,382,654	28,064,612	27,958,091	24,804,389

Source: Audited Financial Statements/General Ledger

E-1: Finances for Fiscal Year 2002-03 through 2006-07 (Continued)

Sources of Funds	2002-03	2003-04	2004-05	2005-06	2006-07
Student tuition and fees	77,741,926	80,736,486	90,463,374	95,726,613	99,500,651
Less: Student financial aid	<u>(11,979,900)</u>	<u>(12,488,185)</u>	<u>(16,695,746)</u>	<u>(17,096,534)</u>	<u>(16,816,310)</u>
Net student tuition and fees	65,762,026	68,288,301	73,767,628	78,630,079	82,684,341
Private gifts and grants	4,782,732	4,618,836	5,190,813	10,321,740	7,465,609
Government grants (Federal and State)	998,783	1,232,907	1,355,109	1,114,701	1,002,533
Sponsored programs				413,918	558,787
Investment income	1,106,932	4,084,049	2,710,215	5,740,783	7,513,977
Auxiliary enterprises	3,508,096	3,750,005	4,333,370	4,236,733	4,108,151
Annuity and trust gifts	318,000	25,000	10,000	103,753	85,000
Premiums earned				1,088,845	1,503,506
Other	<u>981,308</u>	<u>1,131,016</u>	<u>1,271,781</u>	<u>922,880</u>	<u>1,117,382</u>
Total revenues	77,457,877	83,130,114	88,638,916	102,573,432	106,039,286
Expenses					
Instruction	40,859,841	42,772,144	42,967,152	41,252,341	42,028,834
Academic support	9,523,780	9,140,230	14,961,489	14,074,638	13,175,567
Student services	10,832,060	10,585,736	11,062,904	11,285,116	10,136,019
Institutional support	13,643,676	12,371,895	11,444,907	20,031,591	22,131,662
Auxiliary enterprises	<u>4,431,303</u>	<u>4,496,820</u>	<u>4,557,232</u>	<u>3,765,382</u>	<u>2,658,652</u>
Total expenses	<u>79,290,660</u>	<u>79,366,825</u>	<u>84,993,684</u>	<u>90,409,068</u>	<u>90,130,734</u>
Change in Net Assets	(1,832,783)	3,763,289	3,645,232	12,164,364	15,908,552
Net assets at beginning of year	56,407,794	54,575,011	58,338,300	61,983,532	74,147,896
Net assets at end of year	54,575,011	58,338,300	61,983,532	\$74,147,896	\$90,056,448

Source: Audited Financial Statements

**E-2: Financial Aid for Traditional-Age Full-Time Students
Fall 2003 - Fall 2007**

Enrolled Students Receiving Aid:

	Fall 2003		Fall 2004		Fall 2005		Fall 2006		Fall 2007	
	Freshmen	Undergrad	Freshmen	Undergrad	Freshmen	Undergrad	Freshmen	Undergrad	Freshmen	Undergrad
a) Number of degree-seeking undergraduate students	289	1338	375	1546	332	1579	314	1568	334	1590
b) Number of students in line a who were financial aid applicants (include applicants for all types of aid)	274	1173	343	1363	308	1387	289	1366	305	1367
c) Number of students in line b who were determined to have financial need	255	1087	313	1265	282	1306	249	1270	276	1271
d) Number of students in line c who received any financial aid	255	1087	313	1261	282	1304	149	1268	276	1264
e) Number of students in line d who received any need-based gift aid	238	1018	300	1216	233	1192	234	1184	251	1154
f) Number of students in line d who received any need-based self-help aid	201	882	276	1097	86	356	216	1116	85	332
g) Number of students in line d who received any non-need-based gift aid	226	946	294	1118	239	1168	174	1088	217	1061
h) Number of students in line d whose need was fully met (exclude PLUS loans, unsubsidized loans, and private alternative loans)	55	328	46	245	1	24	18	162	21	147
i) On average, the percentage of need that was met of students who received any need-based aid. Exclude any resources that were awarded to replace EFC (PLUS loans, unsubsidized loans, and private alternative loans)	85%	85%	80%	78%	70%	72%	64%	68%	50%	52%
j) The average financial aid package of those in line d. Exclude any resources that were awarded to replace EFC (PLUS loans, unsubsidized loans, and private alternative loans)	\$23,895	24188	\$21,985	\$21,604	\$18,403	\$20,636	\$18,223	\$20,615	\$21,072	\$21,629
k) Average need-based gift award of those in line e	\$10,182	\$10,027	\$10,572	\$10,995	\$9,243	\$10,620	\$10,033	\$10,763	\$11,047	\$10,868
l) Average need-based self-help award (excluding PLUS loans, unsubsidized loans, and private alternative loans) of those in line f	\$4,390	\$5,171	\$4,904	\$5,691	\$1,783	\$2,163	\$2,324	\$3,207	\$2,928	\$2,836
m) Average need-based loan (excluding PLUS loans, unsubsidized loans, and private alternative loans) of those in line f who received a need-based loan	\$3,813	\$5,413	\$2,907	\$3,442	\$4,417	\$4,637	\$2,445	\$3,447	\$4,668	\$5,268

Number of Enrolled Students Receiving Non-Need-Based Grants and Scholarships:

n) Number of students in line a who had no financial need and who received non-need-based gift aid (exclude those receiving athletic awards and tuition benefits)	27	148	49	202	42	211	66	384	40	217
o) Average dollar amount of non-need-based gift aid awarded to students in line n	\$8,414	\$7,144	\$9,204	\$7,716	\$8,988	\$7,929	\$8,890	\$6,792	\$9,400	\$7,954
p) Number of students in line a who received a non-need-based athletic grant or scholarship**	0	0	0	0	0	0	0	0	0	0
q) Average dollar amount of non-need-based athletic grants and scholarships awarded to students in line p	0	0	0	0	0	0	0	0	0	0

* "Freshmen" is for "First-Time Full-Time Freshmen", and "Undergrad" is for "Full-time Undergraduate, including Freshmen".

** The University does not grant non-need-based athletic grant or scholarship.

Source: Common Data Set; Financial Aid Office.