



Knowledge • Service • Vision

Fact Book 2002 – 2006

OFFICE OF INSTITUTIONAL RESEARCH, UNIVERSITY OF LA VERNE

UNIVERSITY OF LA VERNE FACT BOOK 2002-2006
6th Edition

Editor:

Yingxia Cao, Institutional Research Analyst
Office of Institutional Research, Academic Affairs
University of La Verne
La Verne, CA 91750
Tel: (909) 593-3511 ext. 4235
Fax: (909) 392-2709
Email: ycao@ulv.edu

Contributors:

Al Clark, Associate Vice-President, Academic Affairs
Randy Del Rio, Assistant Controller, Accounting Department
Philip Hofer, Director, International and Study Abroad Center
Fernando Ramos, Assistant Director, Financial Aid Office
James Schirmer, Institutional Research Analyst, Academic Affairs
Brett Schmitt, Programmer Analyst, Human Resource Department

This book is intended as a reference for the ULV Community and may be quoted using accepted scholarly citation without permission. Reproduction of complete tables, figures, or text must include a "University of La Verne Fact Book 2002-2006" notation and page number.

Information contained in the Fact Book is based on annual university census from the Banner student record system on November 15 and from various University offices. If you would like more information about the data, please contact the Office of Institutional Research.

All information contained in this book is also available at the website of the Office of Institutional Research: <http://www.ulv.edu/ir/reports/factbooks/>.

Feedback and comments are welcome and should be directed to the Office of Institutional Research, ext 4235.

TABLE OF CONTENTS

A. STUDENTS

A-1: Unduplicated Student Headcount by Campus/Program	1
A-2: Unduplicated Undergraduate Student Headcount by Major	2
A-3 to A-5: Unduplicated Graduate Student Headcount by Major	3
A-6: Unduplicated Student Headcount by Level, Major, and Campus – The College of Arts & Sciences *	4
A-7: Unduplicated Student Headcount by Level, Major, and Campus - The College of Business & Public Management *	5
A-8: Unduplicated Student Headcount by Level, Major, and Campus - The College of Education & Organizational Leadership *	6
A-9: Student Registrations by Campus/Program	7
A-10: Student Full-Time Equivalent (FTE) by Campus/Program	8
A-11: Undergraduate Student FTE by Major	9
A-12 to A-14: Graduate Student FTE by Major	10
A-15: Change in Student FTE by Campus/Program and by College	11
A-16: Student Classification and Enrollment Status	12
A-17: Student Ethnicity and Gender	13
A-18: Student Age by Campus/Program and by Class*	14
A-19: International Student	15

B. ADMISSIONS AND NEW STUDENTS

B-1 to B-2: Admission Statistics of Main Campus First-Time Traditional-Age Freshmen	16-17
B-3: Gender of New Main Campus Traditional-Age Freshman and Transfer Students ...	18
B-4: Ethnicity of New Main Campus Traditional-Age Freshman and Transfer Students	19
B-5: New Main Campus Traditional-Age Freshman SAT Scores	20
B-6: Entrance GPA of New Main Campus Traditional-Age Freshmen and Transfers.....	21
B-7: Top 15 High School Origins of New Main Campus Traditional-Age Freshmen*...	22
B-8: Top 15 College Origins of New Main Campus Traditional-Age Transfers*...	22
B-9: New Main Campus Traditional-Age Students by Geographic Region	23
B-10: New Main Campus Traditional-Age International Students by Geographic Region	24
B-11: New Main Campus Traditional-Age Freshmen by Major	25
B-12: New Main Campus Traditional-Age Transfers by Major	26

* New sections in the 6th edition.

B-13: New RCA (Regional Campus Administration) Undergraduate Enrollment by Gender and Ethnicity*	27
B-14: New RCA Undergraduate Enrollment by Major *	28
B-15: Application, Acceptance, and Enrollment Statistics for the College of Law	29
B-16: New Main Campus Masters Students by Major/Credential*	30
B-17: New Doctoral Students by Major/Credential*	30
B-18: New RCA Masters Students by Major/Credential*	31

C. PERFORMANCE INDICATORS

C-1: Student GPA by Level	32
C-2: Retention Rates for First-Time Full-Time Traditional-Age Freshman Cohort	33
C-3: Graduation Rates for First-Time Full-Time Traditional-Age Freshman (GRS) Cohort	33
C-4: The First Fall-to-Fall (First-Year) Retention Rates for Main Campus First-Time Full-Time Freshman Cohort by Ethnicity*	34
C-5: Graduation Rates for Main Campus First-Time Freshman Cohort by Ethnicity*	34
C-6: Retention Rates for Main Campus Full-Time Undergraduate Transfer Students*	35
C-7: Graduation Rates for Main Campus Full-Time Undergraduate Transfer Students*	35
C-8: Conferred Degrees for All Students by Type and by College	36
C-9: Conferred Bachelors Degrees	37
C-10: Conferred Graduate Degrees	38

D. FACULTY AND STAFF

D-1: Gender and Ethnicity of All ULV Faculty	39
D-2: College and Rank of Full-Time Faculty	40
D-3: Highest Degrees of Full-Time Faculty	41
D-4: Tenure Status of Full-Time Faculty	42
D-5: Years of Service of Full-Time Faculty	43
D-6: Gender, Ethnicity, and Appointment for Staff by Position	44

E. FINANCE & FINANCIAL AID

E-1: Fiscal Year Finances	45-46
E-2: Financial Aid for Traditional-Age Students	47

* New sections in the 6th edition.

A. STUDENTS

All statistics are based on data from ULV's census on November 15 for each year specified, unless otherwise noted.

**A-1: Unduplicated Student Headcount by Campus/Program
Fall 2002 - Fall 2006**

Main Campus Programs	Fall 2002		Fall 2003		Fall 2004		Fall 2005		Fall 2006	
Main Campus Undergraduate	1439	18.8%	1396	16.8%	1655	19.9%	1721	20.7%	1685	20.2%
Main Campus Graduate	1408	18.4%	1431	17.3%	1560	18.7%	1505	18.1%	1480	17.8%
DPA	111	1.4%	106	1.3%	111	1.3%	108	1.3%	105	1.3%
EdD	351	4.6%	377	4.5%	405	4.9%	340	4.1%	341	4.1%
PASC	62	0.8%	12	0.1%	1	0.0%	2	0.0%	2	0.0%
Law	127	1.7%	195	2.4%	221	2.7%	255	3.1%	263	3.2%
	3498	45.7%	3517	42.4%	3953	47.5%	3931	47.2%	3876	46.5%
Regional Campus Administration (RCA)										
CAPA	785	10.2%	787	9.5%	839	10.1%	817	9.8%	756	9.1%
Education*	936	12.2%	527	6.4%	545	6.5%	574	6.9%	509	6.1%
ULV Online	24	0.3%	52	0.6%	104	1.2%	162	1.9%	216	2.6%
Teacher Credential (RCA Ed.)	106	1.4%	135	1.6%	158	1.9%	143	1.7%	164	2.0%
	1851	24.2%	1501	18.1%	1646	19.8%	1696	20.4%	1645	19.8%
Regional Campuses										
Bakersfield Credential****	85	1.1%	91	1.1%	85	1.0%	134	1.6%	110	1.3%
Central Coast	62	0.8%	95	1.1%	101	1.2%	124	1.5%	86	1.0%
High Desert Victorville	0	0.0%	85	1.0%	147	1.8%	145	1.7%	128	1.5%
Inland Empire	393	5.1%	330	4.0%	293	3.5%	284	3.4%	275	3.3%
Kern County/Bakersfield	179	2.3%	191	2.3%	165	2.0%	168	2.0%	157	1.9%
Orange County	542	7.1%	481	5.8%	414	5.0%	386	4.6%	336	4.0%
San Fernando Valley	475	6.2%	412	5.0%	439	5.3%	395	4.7%	362	4.3%
Ventura County	154	2.0%	144	1.7%	173	2.1%	179	2.2%	130	1.6%
	1890	24.7%	1829	22.1%	1817	21.8%	1815	21.8%	1584	19.0%
Regional Campuses on Military Bases										
Eielson/Ft. Wainwright	19	0.2%	5	0.1%	0	0.0%	0	0.0%	0	0.0%
Elmendorf	100	1.3%	51	0.6%	0	0.0%	0	0.0%	0	0.0%
Point Mugu	185	2.4%	244	2.9%	308	3.7%	266	3.2%	283	3.4%
Vandenberg	77	1.0%	96	1.2%	73	0.9%	62	0.7%	62	0.7%
	381	5.0%	396	4.8%	381	4.6%	328	3.9%	345	4.1%
Other Programs										
Ecumenical Centers (ABTC/ECBCS)	40	0.5%	40	0.5%	45	0.5%	50	0.6%	36	0.4%
EPIC	0	0.0%	36***	0.4%	34	0.4%	28	0.3%	0***	0.0%
	40	0.5%	76	0.9%	79	0.9%	78	0.9%	36	0.4%
Special Programs										
Cal Poly CLAD	0	0.0%	62	0.7%	93	1.1%	92	1.1%	0	0.0%
Professional Development/Travel Learning	0	0.0%	297	3.6%	356	4.3%	375	4.5%	841	10.1%
	0	0.0%	359	4.3%	449	5.4%	467	5.6%	841	10.1%
Overseas Campuses/Programs										
Athens**	0	0.0%	608***	7.3%	0	0.0%	0	0.0%	0	0.0%
	0	0.0%	608	7.3%	0	0.0%	0	0.0%	0	0.0%
Campus not Designated	1	0.0%	2	0.0%	0	0.0%	9	0.1%	1	0.0%
Enrollment Grand Total	7661	100.0%	8288	100.0%	8325	100.0%	8324	100.0%	8328	100.0%

* Fall 2002 Education numbers include Travel Learning; in subsequent years Travel Learning is reported in Special Programs.

** Athens Campus was closed after Summer 2004. Thereafter, its students thereafter are classified under "Main Campus" since the 5th edition.

*** End of Term enrollment figures; census day figures unavailable.

**** Bakersfield was formally under Main Campus Programs, but has been reported under Regional Campus Administration since this edition.

Source: Institutional Research Annual Census on November 15.

**A-2: Unduplicated Undergraduate Headcount by Major at all ULV Campuses
Fall 2002 - Fall 2006**

Major	Fall 2002		Fall 2003		Fall 2004		Fall 2005		Fall 2006	
College of Arts & Sciences										
Athletic Training	11	0.3%	18	0.5%	30	0.7%	43	1.0%	41	1.0%
Anthropology	9	0.2%	8	0.2%	10	0.2%	9	0.2%	8	0.2%
Art	20	0.5%	25	0.6%	32	0.7%	28	0.6%	25	0.6%
Art History	1	0.0%	1	0.0%	4	0.1%	5	0.1%	11	0.3%
Behavioral Science	50	1.3%	46	1.2%	58	1.3%	35	0.8%	34	0.8%
Biology	67	1.7%	58	1.5%	84	1.9%	96	2.2%	115	2.8%
Broadcasting	38	1.0%	39	1.0%	37	0.8%	46	1.1%	46	1.1%
Chemistry	30	0.8%	23	0.6%	24	0.6%	28	0.6%	30	0.7%
Communications	70	1.8%	75	1.9%	85	2.0%	84	1.9%	87	2.1%
Comparative Literature	0	0.0%	1	0.0%	1	0.0%	0	0.0%	2	0.0%
Computer Science & Engineering	78	2.0%	68	1.8%	56	1.3%	45	1.0%	46	1.1%
Criminology	122	3.2%	139	3.6%	196	4.5%	180	4.1%	172	4.2%
English	66	1.7%	62	1.6%	78	1.8%	76	1.7%	68	1.7%
Environmental Biology	4	0.1%	2	0.1%	4	0.1%	1	0.0%	3	0.1%
Environmental Management	0	0.0%	0	0.0%	1	0.0%	1	0.0%	1	0.0%
French	1	0.0%	1	0.0%	0	0.0%	1	0.0%	1	0.0%
General Studies (AA)	0	0.0%	1	0.0%	0	0.0%	12	0.3%	0	0.0%
German	0	0.0%	0	0.0%	1	0.0%	0	0.0%	0	0.0%
History	31	0.8%	21	0.5%	43	1.0%	40	0.9%	39	1.0%
International Business & Language	24	0.6%	21	0.5%	15	0.3%	22	0.5%	21	0.5%
International Studies	5	0.1%	2	0.1%	5	0.1%	5	0.1%	3	0.1%
Journalism	31	0.8%	34	0.9%	42	1.0%	43	1.0%	43	1.0%
Legal Studies/Paralegal Studies*	57	1.5%	58	1.5%	83	1.9%	92	2.1%	92	2.2%
Liberal Arts	4	0.1%	7	0.2%	15	0.3%	18	0.4%	12	0.3%
Mathematics	15	0.4%	25	0.6%	25	0.6%	23	0.5%	24	0.6%
Movement & Sports Science/Phys Ed	81	2.1%	74	1.9%	66	1.5%	66	1.5%	64	1.6%
Music	14	0.4%	14	0.4%	16	0.4%	13	0.3%	9	0.2%
Natural History/Science	0	0.0%	0	0.0%	2	0.0%	0	0.0%	0	0.0%
Philosophy	8	0.2%	9	0.2%	10	0.2%	6	0.1%	8	0.2%
Physics	1	0.0%	5	0.1%	5	0.1%	7	0.2%	6	0.1%
Political Science	49	1.3%	42	1.1%	55	1.3%	52	1.2%	54	1.3%
Psychology	206	5.4%	223	5.8%	263	6.0%	248	5.7%	257	6.3%
Religion	14	0.4%	12	0.3%	8	0.2%	5	0.1%	6	0.1%
Religion & Philosophy	3	0.1%	6	0.2%	5	0.1%	1	0.0%	8	0.2%
Social Science	24	0.6%	21	0.5%	22	0.5%	18	0.4%	18	0.4%
Sociology	48	1.2%	51	1.3%	70	1.6%	79	1.8%	75	1.8%
Spanish	6	0.2%	7	0.2%	7	0.2%	14	0.3%	16	0.4%
Speech Communication	7	0.2%	9	0.2%	12	0.3%	22	0.5%	35	0.9%
Theatre Arts	19	0.5%	16	0.4%	22	0.5%	28	0.6%	26	0.6%
Student Designed Majors	0	0.0%	1	0.0%	3	0.1%	2	0.0%	1	0.0%
	1214	31.6%	1225	31.8%	1495	34.3%	1494	34.2%	1507	36.8%
College of Business & Public Management										
Accounting	74	1.9%	64	1.7%	61	1.4%	66	1.5%	56	1.4%
Business Administration	964	25.1%	848	22.0%	884	20.3%	854	19.6%	791	19.3%
Business Management	3	0.1%	1	0.0%	0	0.0%	4	0.1%	62	1.5%
E-Commerce	1	0.0%	1	0.0%	4	0.1%	11	0.3%	6	0.1%
Economics	7	0.2%	8	0.2%	7	0.2%	9	0.2%	7	0.2%
Health Administration*	98	2.6%	81	2.1%	68	1.6%	51	1.2%	36	0.9%
Marketing*	20	0.5%	15	0.4%	19	0.4%	20	0.5%	9	0.2%
Organizational Management*	549	14.3%	593	15.4%	577	13.3%	541	12.4%	493	12.0%
Public Administration*	74	1.9%	85	2.2%	92	2.1%	90	2.1%	85	2.1%
Student Designed Majors**	0	0.0%	5	0.1%	7	0.2%	3	0.1%	1	0.0%
	1790	46.6%	1696	44.0%	1712	39.3%	1649	37.8%	1546	37.7%
College of Education & Organizational Leadership										
Child Development	150	3.9%	240	6.2%	374	8.6%	426	9.8%	414	10.1%
Diversified Education/Liberal Studies	509	13.2%	473	12.3%	468	10.7%	543	12.4%	491	12.0%
Multiple Subject (Credential)	0	0.0%	0	0.0%	12	0.3%	7	0.2%	6	0.1%
Single Subject (Credential)	0	0.0%	0	0.0%	1	0.0%	3	0.1%	5	0.1%
	659	17.1%	713	18.5%	855	19.6%	979	22.4%	916	22.3%
Major not declared	180	4.7%	223	5.8%	292	6.7%	245	5.6%	130	3.2%
Total Undergraduate Majors	3843	100.0%	3857	100.0%	4354	100.0%	4367	100.0%	4099	100.0%

* Fall 2002: Legal Studies, Health Administration, Organizational Management, and Public Administration were within the School of Public Affairs & Health Administration.

** A correction: the 0.1% was added to the total in Fall 2005.

Source: Institutional Research Annual Census on November 15.

**A-3: Unduplicated Masters Student Headcount by Major/Credential at All ULV Campuses
Fall 2002 - Fall 2006**

Major	Fall 2002		Fall 2003		Fall 2004		Fall 2005		Fall 2006	
College of Arts & Sciences										
Counseling (Concentration/Special Emphasis)	73	2.3%	2	0.1%	25	0.8%	29	0.9%	24	0.7%
Marriage & Family Therapy (MFT)	40	1.3%	46	1.5%	76	2.4%	80	2.5%	81	2.3%
Student Designed Major	0	0.0%	1	0.0%	0	0.0%	0	0.0%	0	0.0%
	113	3.6%	49	1.6%	101	3.3%	109	3.4%	105	3.0%
College of Business & Public Management										
Business Administration	740	23.6%	725	24.2%	668	21.5%	697	21.9%	727	21.0%
Business Information Technology	8	0.3%	12	0.4%	12	0.4%	5	0.2%	6	0.2%
Business Organizational Management	112	3.6%	67	2.2%	36	1.2%	27	0.8%	34	1.0%
Gerontology*	28	0.9%	29	1.0%	32	1.0%	34	1.1%	38	1.1%
Health Services Administration*	57	1.8%	56	1.9%	55	1.8%	40	1.3%	33	1.0%
Leadership & Management**	98	3.1%	99	3.3%	94	3.0%	84	2.6%	90	2.6%
Public Administration*	35	1.1%	39	1.3%	51	1.6%	61	1.9%	62	1.8%
Student Designed Major	0	0.0%	0	0.0%	0	0.0%	1	0.0%	0	0.0%
	1078	34.4%	1027	34.3%	948	30.5%	948	29.8%	990	28.7%
College of Education & Organizational Leadership										
Child Development	29	0.9%	49	1.6%	45	1.4%	76	2.4%	63	1.8%
Child Life	16	0.5%	19	0.6%	21	0.7%	25	0.8%	25	0.7%
Educational Management	206	6.6%	183	6.1%	175	5.6%	179	5.6%	152	4.4%
Multiple Subject (Credential)	337	10.8%	320	10.7%	244	7.9%	269	8.5%	231	6.7%
Preliminary Administrative Services (Credential)	43	1.4%	42	1.4%	35	1.1%	34	1.1%	21	0.6%
Pupil Personnel Services (Credential)	23	0.7%	7	0.2%	6	0.2%	3	0.1%	5	0.1%
Reading	55	1.8%	60	2.0%	82	2.6%	63	2.0%	63	1.8%
School/Educational Counseling	506	16.1%	302	10.1%	310	10.0%	363	11.4%	407	11.8%
Single Subject (Credential)	174	5.6%	215	7.2%	180	5.8%	165	5.2%	124	3.6%
Special Education	10	0.3%	27	0.9%	41	1.3%	42	1.3%	41	1.2%
Special Emphasis	191	6.1%	213	7.1%	413	13.3%	346	10.9%	367	10.6%
Special Emphasis: Advanced Teaching Methods	55	1.8%	24	0.8%	40	1.3%	44	1.4%	0	0.0%
Student Designed Majors	1	0.0%	0	0.0%	0	0.0%	0	0.0%	0	0.0%
	1646	52.5%	1461	48.8%	1592	51.3%	1609	50.5%	1499	43.4%
Major not Declared	297	9.5%	456	15.2%	463	14.9%	517	16.2%	861	24.9%
Total Masters Majors	3134	100%	2993	100%	3104	100%	3183	100%	3455	100%

**A-4: Unduplicated Doctoral Student Headcount by Major/Credential at All ULV Campuses
Fall 2002 - Fall 2006**

Major	Fall 2002		Fall 2003		Fall 2004		Fall 2005		Fall 2006	
Clinical-Community Psychology (PsyD)	50	9.0%	52	9.5%	60	10.4%	67	12.9%	61	11.9%
Educational/Organizational Leadership/Management (EdD)	349	62.9%	356	65.1%	373	64.6%	329	63.5%	340	66.5%
Professional Administrative Services (Credential)	45	8.1%	12	2.2%	1	0.2%	2	0.4%	2	0.4%
Public Administration (DPA)	111	20.0%	105	19.2%	111	19.2%	109	21.0%	106	20.7%
	555	100.0%	525	96.0%	545	94.5%	507	97.9%	509	99.6%
Major not Declared	0	0.0%	22	4.0%	32	5.5%	11	2.1%	2	0.4%
Total Doctoral Majors	555	100%	547	100%	577	100%	518	100%	511	100%

**A-5: Unduplicated First Professional Student Headcount by Major at All ULV Campuses
Fall 2002 - Fall 2006**

Major	Fall 2002		Fall 2003		Fall 2004		Fall 2005		Fall 2006	
First Professional (JD)	127	100.0%	195	100.0%	221	100.0%	255	100.0%	263	100.0%
Total First Professional Majors	127	100.0%	195	100.0%	221	100.0%	255	100.0%	263	100.0%

*Fall Fall 2002: Gerontology, Health Services Administration, Organizational Management, and Public Administration were within the School of Public Affairs & Health Administration

** Leadership & Management was organized under the College of Education & Organizational Leadership since the 5th edition of this Fact Book.

Source: Institutional Research Annual Census on November 15.

A-6: Unduplicated Student Headcount by Level, Major, and Campus*
College of Arts and Science - Fall 2006

MAJOR	Main Campus	CAPA	Ecumenical Centers	Point Mugu Center	ULV On-Line
Undergraduate					
Anthropology	7	1	0	0	0
Art	20	5	0	0	0
Art History	5	6	0	0	0
Athletic Training	41	0	0	0	0
Behavioral Science	9	25	0	0	0
Biology	108	7	0	0	0
Broadcasting	42	4	0	0	0
Chemistry	27	3	0	0	0
Communications	82	5	0	0	0
Comparative Literature	1	1	0	0	0
Computer Sci & Computer Eng	35	11	0	0	0
Creative Writing	1	0	0	0	0
Criminology	94	25	0	40	13
E-Commerce	4	2	0	0	0
English	39	29	0	0	0
Environmental Biology	3	0	0	0	0
Environmental Management	1	0	0	0	0
History	33	6	0	0	0
International Studies	3	0	0	0	0
Intl Business & Language	21	0	0	0	0
Journalism	43	0	0	0	0
Legal Studies	26	60	0	0	0
Liberal Arts	10	2	0	0	0
Mathematics	21	3	0	0	0
Movement and Sports Science	56	7	0	0	0
Music	7	2	0	0	0
Paralegal Studies	6	0	0	0	0
Philosophy	8	0	0	0	0
Physical Education	1	0	0	0	0
Physics	5	1	0	0	0
Political Science	49	5	0	0	0
Psychology	156	59	11	31	0
Religion	3	0	3	0	0
Religion/Philosophy	2	1	5	0	0
Social Science	14	4	0	0	0
Sociology	35	40	0	0	0
Spanish	13	3	0	0	0
Speech Communications	34	1	0	0	0
Theatre	26	0	0	0	0
Major Not Declared	105	1	17	0	1
	1196	319	36	71	14
Masters					
Coun/Marr, Family & Child Coun	4	0	0	0	0
Coun/Marriage & Family Therapy	8	0	0	0	0
Counseling	24	0	0	0	0
Marriage Family Therapy	23	0	0	0	0
Marriage,Family & Chld Therapy	46	0	0	0	0
Multiple Subject	0	0	0	0	0
Major Not Declared	9	0	0	0	0
Total Master's Level Students	114	0	0	0	0
Doctoral					
Clinical-Community Psychology	61	0	0	0	0
Grand Total	1371	319	36	71	14

* Non-degree professional development students are not included.
Source: Institutional Research Annual Census on November 15.

**A-7: Unduplicated Student Headcount by Level, Major, and Campus
College of Business and Public Management - Fall 2006**

MAJOR	Main Campus	DPA	CAPA	ULV On-Line	Central Coast Campus	High Victorville Campus	Desert Empire Campus	Inland Kern County Campus	Kern County Campus	Orange County Campus	Point Mugu Campus	San Fernando Valley Campus	Vanden berg Campus	Ventura County Campus
Undergraduate														
Accounting	29	0	27	0	0	0	0	0	0	0	0	0	0	0
Applied Management	0	0	0	0	0	1	0	0	0	0	0	0	0	0
Business Administration	261	0	125	0	2	25	73	23	87	72	94	14	15	
Business Management	0	0	5	0	0	10	26	0	20	0	1	0	0	
Economics	6	0	1	0	0	0	0	0	0	0	0	0	0	
French	0	0	1	0	0	0	0	0	0	0	0	0	0	
Health Administration	1	0	0	0	0	0	26	0	2	0	5	0	0	
Health Services Management	0	0	0	0	0	0	1	0	0	0	0	0	0	
Marketing	9	0	0	0	0	0	0	0	0	0	0	0	0	
Organizational Management	6	0	104	98	1	11	23	26	63	105	26	16	14	
Public Administration	6	0	26	34	0	0	11	0	1	0	0	0	7	
Major Not Declared	0	0	0	1	0	0	0	1	0	1	0	0	0	
	318	0	289	133	3	47	160	50	173	178	126	30	36	
Masters														
Business Administration	386	0	69	6	15	35	9	69	0	88	30	20		
Business Information Tech	6	0	0	0	0	0	0	0	0	0	0	0	0	
Business Organizational Mgmt	0	0	0	0	0	0	0	0	34	0	0	0	0	
Gerontology	30	0	0	0	0	0	0	0	0	0	0	0	8	
Health Administration	17	0	0	0	0	0	0	0	0	0	0	0	0	
Health Services Administration	15	0	0	0	0	0	0	0	0	0	0	0	0	
Healthcare Administration	1	0	0	0	0	0	0	0	0	0	0	0	0	
Leadership & Management	62	0	0	0	0	0	20	0	7	0	0	0	1	
Public Administration	51	0	1	0	0	0	0	0	10	0	0	0	0	
Major Not Declared	1	0	0	0	0	0	0	0	1	0	0	1	0	
	569	0	1	69	6	15	55	9	87	34	88	31	29	
Doctoral														
Public Administration	1	105	0	0	0	0	0	0	0	0	0	0	0	
Grand Total	888	105	290	202	9	62	215	59	260	212	214	61	65	

* Non-degree professional development students are not included.

Source: Institutional Research Annual Census on November 15.

A-8: Unduplicated Student Headcount by Level, Major, and Campus*
College of Education and Organizational Leadership - Fall 2006

MAJOR	Main Campus	EdD	PASC II**	Bakersfield Teacher Education	CAPA	Central Coast Campus	High Desert Victorville Campus	Inland Empire Campus	Kern County Campus	Orange County Campus	RCA Educ ation	RCA Teacher Education	San Fernando Valley Campus	Ventura County Campus
Undergraduate														
Child Development	20	0	0	0	46	28	27	44	0	76	0	0	118	55
Liberal Studies	151	0	0	0	99	49	38	17	96	0	0	0	30	11
Multiple Subject	0	0	0	1	0	0	0	0	0	0	0	6	0	0
Single Subject	0	0	0	2	0	0	0	0	0	0	0	3	0	0
	171	0	0	3	145	77	65	61	96	76	0	9	148	66
Masters														
Child Development	34	0	0	0	0	0	0	0	0	0	29	0	0	0
Child Life	25	0	0	0	0	0	0	0	0	0	0	0	0	0
Educational Counseling	71	0	0	0	0	0	0	0	0	0	319	0	0	0
Educational Management	22	0	0	0	0	0	0	0	0	0	130	0	0	0
Mild/Mod Educ Specialist Lvl I	25	0	0	12	0	0	0	0	0	0	0	0	0	0
Mild/Mod Educ Specialist Lvl II	1	0	0	0	0	0	0	0	0	0	0	0	0	0
Multiple Subject	135	0	0	42	0	0	0	0	0	0	0	53	0	0
Preliminary Admin Services	13	0	0	0	0	0	0	0	0	0	8	0	0	0
Pupil Personnel Services	2	0	0	0	0	0	0	0	0	0	3	0	0	0
Reading	46	0	0	0	0	0	0	0	0	0	17	0	0	0
Reading/Language Arts	1	0	0	0	0	0	0	0	0	0	0	0	0	0
School Counseling	5	0	0	0	0	0	0	0	0	0	3	0	0	0
School Psychology	9	0	0	0	0	0	0	0	0	0	0	0	0	0
Single Subject	82	0	0	16	0	0	0	0	0	0	0	26	0	0
Special Education	3	0	0	0	0	0	0	0	0	0	0	0	0	0
Special Emphasis	255	0	0	35	0	0	0	0	0	0	1	76	0	0
Major Not Declared	7	0	0	1	0	0	0	0	0	0	0	0	0	0
	736			106							510	155		
Doctoral														
Educational Leadership	2	309	0	0	0	0	0	0	0	0	0	0	0	0
Organizational Leadership	0	29	0	0	0	0	0	0	0	0	0	0	0	0
Professional Admin Services	0	1	1	0	0	0	0	0	0	0	0	0	0	0
Major Not Declared	0	2	1	0	0	0	0	0	0	0	0	0	0	0
	2	341	2	0	0	0	0	0	0	0	0	0	0	0
Grand Total	909	341	2	109	145	77	65	61	96	76	510	164	148	65

* Non-degree professional development students are not included.

** Professional Administrative Services Credential Program (with EdD).

Source: Institutional Research Annual Census on November 15.

A-9: Student Registrations by Campus/Program*
Fall 2002 - Fall 2006

Main Campus Programs	Fall 2002		Fall 2003		Fall 2004		Fall 2005		Fall 2006	
Main Campus Undergraduate	2118	24.1%	2027	22.2%	2959	29.7%	2903	29.1%	2256	25.7%
Main Campus Graduate	1521	17.3%	1454	15.9%	1660	16.7%	1641	16.4%	1472	16.8%
DPA	113	1.3%	106	1.2%	111	1.1%	98	1.0%	105	1.2%
EdD	359	4.1%	376	4.1%	407	4.1%	349	3.5%	343	3.9%
PASC	64	0.7%	24	0.3%	13	0.1%	21	0.2%	17	0.2%
Law	127	1.4%	196	2.1%	237	2.4%	329	3.3%	263	3.0%
	4302	49.0%	4183	45.8%	5387	54.2%	5341	53.5%	4456	50.7%
Regional Campus Administration (RCA)										
CAPA	858	9.8%	788	8.6%	809	8.1%	793	7.9%	484	5.5%
Education**	928	10.6%	525	5.7%	541	5.4%	589	5.9%	508	5.8%
ULV Online	318	3.6%	307	3.4%	393	4.0%	492	4.9%	523	6.0%
Teacher Credential (RCA Ed.)	120	1.4%	138	1.5%	160	1.6%	147	1.5%	163	1.9%
	2224	25.4%	1758	19.2%	1903	19.1%	2021	20.2%	1678	19.1%
Regional Campuses										
Bakersfield Credential	105	1.2%	101	1.1%	154	1.5%	154	1.5%	119	1.4%
Central Coast	59	0.7%	81	0.9%	98	1.0%	119	1.2%	85	1.0%
High Desert Victorville	0	0.0%	107	1.2%	144	1.4%	142	1.4%	118	1.3%
Inland Empire	364	4.2%	314	3.4%	289	2.9%	259	2.6%	240	2.7%
Kern County/Bakersfield	158	1.8%	176	1.9%	126	1.3%	155	1.6%	140	1.6%
Orange County	528	6.0%	437	4.8%	365	3.7%	343	3.4%	304	3.5%
San Fernando Valley	458	5.2%	391	4.3%	408	4.1%	364	3.6%	327	3.7%
Ventura County	149	1.7%	138	1.5%	158	1.6%	161	1.6%	111	1.3%
	1821	20.8%	1745	19.1%	1742	17.5%	1697	17.0%	1444	16.4%
Regional Campuses on Military Bases										
Eielson/Ft. Wainwright	20	0.2%	6	0.1%	2	0.0%	0	0.0%	0	0.0%
Elmendorf	99	1.1%	50	0.5%	0	0.0%	0	0.0%	0	0.0%
Point Mugu	180	2.1%	242	2.6%	300	3.0%	296	3.0%	275	3.1%
Vandenberg	77	0.9%	94	1.0%	68	0.7%	60	0.6%	52	0.6%
	376	4.3%	392	4.3%	370	3.7%	356	3.6%	327	3.7%
Other Programs										
Ecumenical Centers (ABTC/ECBCS)	48	0.5%	44	0.5%	46	0.5%	54	0.5%	37	0.4%
EPIC	0	0.0%	36***	0.4%	34	0.3%	31	0.3%	0***	0.0%
	48	0.5%	80	0.9%	80	0.8%	85	0.9%	37	0.4%
Special Programs										
Cal Poly CLAD	0	0.0%	69	0.8%	94	0.9%	92	0.9%	0	0.0%
Professional Development/Travel Learning	0	0.0%	298	3.3%	372	3.7%	395	4.0%	846	9.6%
	0	0.0%	367	4.0%	466	4.7%	487	4.9%	846	9.6%
Overseas Campuses/Programs										
Athens****	0	0.0%	610****	6.7%	0	0.0%	0	0.0%	0	0.0%
	0	0.0%	610	6.7%	0	0.0%	0	0.0%	0	0.0%
Enrollment Grand Total	8771	100.0%	9135	100.0%	9948	100.0%	9987	100.0%	8788	100.0%

* The numbers in this page are based on student course campus, where the students actually took the courses. The dominant course campus of an individual student is counted. If he or she takes the same number of units of courses in more than one campus, he or she will be counted more than once. Hence, total number of student registration is higher than total number of student headcount.

** Fall 2002 Education numbers include Travel Learning; in subsequent years Travel Learning is reported in Special Programs.

*** End of Term enrollment figures; census day figures unavailable.

**** Athens Campus was closed after Summer 2004. Thereafter, its students thereafter are classified under "Main Campus" since the 5th edition.

Source: Institutional Research Annual Census on November 15.

**A-10: Student Full-Time Equivalent (FTE) by Campus/Program
Fall 2002 - Fall 2006 and Academic Year 2004-05 to 2005-06***

Main Campus Programs	Fall 2002		Fall 2003		Fall 2004		Fall 2005		Fall 2006		IPEDS 2004-05		IPEDS 2005-06	
Main Campus Undergraduate	1404.4	23.4%	1379.8	22.3%	1603.5	24.0%	1697.7	25.0%	1635.7	24.0%	1741.0	27.3%	1714.6	25.7%
Main Campus Graduate	1050.7	17.5%	1235.9	20.0%	1275.3	19.1%	1204.6	17.8%	1211.1	17.8%	1055.7	16.5%	1106.5	16.6%
DPA	65.0	1.1%	57.0	0.9%	67.3	1.0%	59.3	0.9%	61.6	0.9%	46.0	0.7%	42.7	0.6%
EdD	226.3	3.8%	254.3	4.1%	267.9	4.0%	213.5	3.1%	197.3	2.9%	174.9	2.7%	145.6	2.2%
PASC	41.5	0.7%	6.7	0.1%	0.8	0.0%	0.7	0.0%	2.1	0.0%	8.2	0.1%	1.0	0.0%
Law	161.2	2.7%	266.9	4.3%	306.2	4.6%	364.0	5.4%	371.8	5.5%	242.5	3.8%	284.0	4.2%
	2949.1	49.2%	3200.6	51.7%	3521.0	52.8%	3539.9	52.2%	3479.5	51.1%	3268.3	51.2%	3294.5	49.3%
Regional Campus Administration (RCA)														
CAPA	497.5	8.3%	482.7	7.8%	518.5	7.8%	505.2	7.4%	442.3	6.5%	596.5	9.3%	533.1	8.0%
Education*	689.7	11.5%	402.8	6.5%	401.7	6.0%	448.8	6.6%	395.3	5.8%	368.0	5.8%	411.7	6.2%
ULV Online	10.5	0.2%	43.0	0.7%	83.8	1.3%	116.5	1.7%	165.8	2.4%	88.6	1.4%	118.7	1.8%
Teacher Credential (RCA Ed.)	135.5	2.3%	160.0	2.6%	165.3	2.5%	165.6	2.4%	183.2	2.7%	112.2	1.8%	139.9	2.1%
	1333.2	22.2%	1088.5	17.6%	1169.3	17.5%	1236.1	18.2%	1186.6	17.4%	1165.3	18.3%	1203.5	18.0%
Regional Campuses														
Bakersfield Credential***	77.0	1.3%	75.2	1.2%	69.7	1.0%	100.8	1.5%	82.3	1.2%	95.7	1.5%	96.9	1.4%
Central Coast	43.7	0.7%	66.8	1.1%	83.7	1.3%	94.9	1.4%	68.0	1.0%	72.0	1.1%	89.5	1.3%
High Desert Victorville	0.0	0.0%	50.9	0.8%	102.8	1.5%	107.9	1.6%	93.8	1.4%	84.7	1.3%	95.0	1.4%
Inland Empire	274.0	4.6%	231.8	3.7%	202.0	3.0%	191.0	2.8%	180.0	2.6%	176.1	2.8%	183.0	2.7%
Kern County/Bakersfield	145.2	2.4%	157.9	2.5%	144.3	2.2%	143.1	2.1%	128.3	1.9%	117.8	1.8%	128.4	1.9%
Orange County	332.5	5.5%	310.6	5.0%	246.3	3.7%	239.0	3.5%	205.0	3.0%	231.1	3.6%	230.0	3.4%
San Fernando Valley	315.3	5.3%	265.0	4.3%	286.4	4.3%	265.0	3.9%	241.1	3.5%	249.4	3.9%	257.2	3.8%
Ventura County	110.5	1.8%	105.5	1.7%	124.0	1.9%	124.5	1.8%	84.3	1.2%	104.1	1.6%	112.8	1.7%
	1298.2	21.7%	1263.7	20.4%	1259.2	18.9%	1266.2	18.7%	1082.7	15.9%	1130.9	17.7%	1192.8	17.8%
Regional Campuses on Military Bases														
Eielson/Ft. Wainwright	15.5	0.3%	5.0	0.1%	0.0	0.0%	0.0	0.0%	0.0	0.0%	0.0	0.0%	0.0	0.0%
Elmendorf	79.2	1.3%	47.7	0.8%	0.0	0.0%	0.0	0.0%	0.0	0.0%	0.3	0.0%	0.0	0.0%
Point Mugu	143.7	2.4%	192.4	3.1%	267.0	4.0%	218.8	3.2%	242.3	3.6%	213.5	3.3%	218.8	3.3%
Vandenberg	58.5	1.0%	73.9	1.2%	57.7	0.9%	48.5	0.7%	47.0	0.7%	44.8	0.7%	49.0	0.7%
	296.9	5.0%	319.0	5.2%	324.7	4.9%	267.3	3.9%	289.3	4.3%	258.6	4.1%	267.8	4.0%
Other Programs														
Ecumenical Centers (ABTC/ECBCS)	36.6	0.6%	32.7	0.5%	28.4	0.4%	31.9	0.5%	21.3	0.3%	26.5	0.4%	29.0	0.4%
EPIC**	0.0	0.0%	0.3	0.0%	16.8	0.3%	15.2	0.2%	0.0	0.0%	25.0	0.4%	19.2	0.3%
	36.6	0.6%	33.0	0.5%	45.2	0.7%	47.1	0.7%	21.3	0.3%	51.5	0.8%	48.2	0.7%
Special Programs														
Cal Poly CLAD	0.0	0.0%	34.0	0.5%	44.0	0.7%	46.6	0.7%	0.0	0.0%	52.6	0.8%	17.1	0.3%
Professional Development/Travel Learning	80.9	1.3%	252.5	4.1%	308.2	4.6%	374.0	5.5%	746.2	11.0%	430.2	6.7%	649.1	9.7%
	80.9	1.3%	286.5	4.6%	352.2	5.3%	420.6	6.2%	746.2	11.0%	482.8	7.6%	666.2	10.0%
Overseas Campuses/Programs														
Athens**	0.3	0.0%	1.5	0.0%	0.0	0.0%	0.0	0.0%	0.0	0.0%	0.0	0.0%	0.0	0.0%
	0.3	0.0%	1.5	0.0%	0.0	0.0%	0.0	0.0%	0.0	0.0%	0.0	0.0%	0.0	0.0%
Campus not Designated	0.3	0.0%	0.0	0.0%	0.0	0.0%	6.2	0.1%	1.0	0.0%	26.3	0.4%	10.0	0.1%
Enrollment Grand Total****	5995.5	100.0%	6192.8	100.0%	6671.6	100.0%	6783.4	100.0%	6806.5	100.0%	6383.7	100.0%	6683.0	100.0%

* Since *Fact Book 2001-2005*, two types of FTEs are provided: (1) ULV defined FTE for accreditation purposes and (2) IPEDs (Integrated Postsecondary Education Data System) defined FTE. For the purpose of accreditation, ULV defines FTE differently for undergraduate students and graduate students across different campuses. ULV defined FTE is calculated as follows:

A. Undergraduate students: A Main Campus undergraduate student who takes 12 credits or more is calculated as 1, and otherwise, term credit hours divided by 15; Athens' students, term credit hours divided by 8; CAPA students, term credit hours divided by 12, and other regional campuses students, term credit hours divided by 8; Bakersfield Credential students, credit hours divided by 8; and CalPolyCLAD students, semester hours divided by 9.

B. Graduate students: Main Campus (MBA, MPA, MHA) students, term credit hours divided by 6; Main Campus PsyD, MA Psy) students, semester hours divided by 9; PASC students, Graduate (Tier 1), term hours divided by 9, and Doctoral (Tier 2), term hours divided by 6; DPA, EdD, and Bakersfield Credential students, term credit hours divided by 9; Law students, term hours divided by 9; Regional Campus students, term hours divided by 6; Athens' students, term hours divided by 6; CalPoly CLAD students, semester hours divided by 9.

IPEDS FTE (Full Time Equivalent) is a measurement equal to one student enrolled full time for one academic year. ULV's academic year includes Fall, Winter, Interterm, Spring, and Summer, and it calculates as "graduate credit hours are divided by 24 and undergraduate credit hours are divided by 30".

A third type of FTE, as defined by Common Data Set (CDS), is available online at <http://www.ulv.edu/cds/>. CDS reports only main campus undergraduate enrollment and calculates total FTE as the sum of total full-time students (usually 12 credits for undergraduate and 9 credit for graduate, or university specified credits for full-time students) plus 1/3 part-time students.

** Accurate census data were not available 2002 through 2005. The Athens Campus was closed after Summer 2004 and its students thereafter are classified under "Main Campus".

*** Bakersfield was formally under Main Campus Programs, but has been reported under Regional Campus Administration since this edition.

**** Correction: FTE for "special programs" and for doctoral psychology students in Main Campus Graduates were left out in the 5th edition are now included in this edition.

Source: Institutional Research Annual Census on November 15.

**A-11: Undergraduate Student Full-Time Equivalent (FTE) by Major at all ULV Campuses*
Fall 2002 - Fall 2006 and Academic Year 2004-05 to 2005-06**

Major	Fall 2002		Fall 2003		Fall 2004		Fall 2005		Fall 2006		IPEDS 2004-05		IPEDS 2005-06	
College of Arts & Sciences														
Athletic Training	11.0	0.4%	17.5	0.6%	29.7	0.9%	42.3	1.2%	40.6	1.2%	33.2	0.9%	43.9	1.2%
Anthropology	7.7	0.3%	6.1	0.2%	8.3	0.2%	7.2	0.2%	7.6	0.2%	9.2	0.3%	7.2	0.2%
Art	18.3	0.6%	22.4	0.7%	28.5	0.8%	25.0	0.7%	23.2	0.7%	29.3	0.8%	26.8	0.8%
Art History	0.8	0.0%	1.2	0.0%	2.2	0.1%	2.6	0.1%	7.6	0.2%	2.8	0.1%	4.1	0.1%
Behavioral Science	34.0	1.1%	34.1	1.1%	42.7	1.2%	24.0	0.7%	22.2	0.7%	42.0	1.2%	23.0	0.7%
Biology	65.5	2.2%	55.7	1.8%	79.3	2.3%	93.0	2.7%	108.7	3.3%	88.7	2.5%	99.6	2.8%
Broadcasting	38.1	1.3%	37.3	1.2%	34.8	1.0%	43.9	1.3%	44.3	1.4%	44.0	1.3%	49.2	1.4%
Chemistry	29.9	1.0%	21.4	0.7%	22.1	0.6%	26.6	0.8%	28.6	0.9%	26.8	0.8%	28.9	0.8%
Communications	70.5	2.3%	70.3	2.3%	83.3	2.4%	81.1	2.3%	83.5	2.5%	84.3	2.4%	84.6	2.4%
Comparative Literature	0.0	0.0%	1.0	0.0%	1.0	0.0%	0.0	0.0%	1.8	0.1%	1.1	0.0%	0.5	0.0%
Computer Science & Engineering	68.4	2.3%	59.7	2.0%	47.5	1.4%	46.0	1.3%	40.2	1.2%	52.9	1.5%	42.5	1.2%
Criminology	108.0	3.6%	122.3	4.0%	169.5	4.9%	156.2	4.5%	152.4	4.6%	159.8	4.6%	156.6	4.5%
English	56.6	1.9%	51.1	1.7%	63.7	1.8%	61.0	1.7%	55.7	1.7%	69.6	2.0%	66.0	1.9%
Environmental Biology	4.0	0.1%	2.0	0.1%	3.4	0.1%	1.0	0.0%	3.0	0.1%	1.8	0.1%	1.8	0.1%
Environmental Management	0.0	0.0%	0.0	0.0%	1.0	0.0%	1.0	0.0%	1.0	0.0%	1.2	0.0%	1.2	0.0%
French	1.0	0.0%	1.0	0.0%	0.0	0.0%	0.9	0.0%	1.1	0.0%	0.4	0.0%	1.5	0.0%
General Studies (AA)	0.0	0.0%	0.3	0.0%	0.0	0.0%	2.8	0.1%	0.0	0.0%	0.0	0.0%	5.1	0.1%
German	0.0	0.0%	0.0	0.0%	1.0	0.0%	0.0	0.0%	0.0	0.0%	0.4	0.0%	0.0	0.0%
History	28.5	0.9%	17.5	0.6%	39.9	1.2%	35.8	1.0%	35.8	1.1%	38.5	1.1%	37.3	1.1%
International Business & Language	23.5	0.8%	21.0	0.7%	15.0	0.4%	22.0	0.6%	21.0	0.6%	17.6	0.5%	23.7	0.7%
International Studies	4.7	0.2%	2.0	0.1%	5.0	0.1%	4.8	0.1%	2.7	0.1%	6.0	0.2%	3.9	0.1%
Journalism	29.4	1.0%	31.6	1.0%	40.1	1.2%	42.3	1.2%	43.0	1.3%	43.8	1.3%	45.7	1.3%
Legal Studies/Paralegal Studies*	42.9	1.4%	40.9	1.3%	62.5	1.8%	69.8	2.0%	66.4	2.0%	64.1	1.8%	73.8	2.1%
Liberal Arts	3.6	0.1%	6.5	0.2%	14.5	0.4%	17.2	0.5%	10.7	0.3%	17.3	0.5%	18.8	0.5%
Mathematics	12.4	0.4%	22.3	0.7%	23.7	0.7%	21.0	0.6%	21.4	0.7%	22.8	0.7%	20.5	0.6%
Movement & Sports Science/Phys Ed	75.7	2.5%	67.3	2.2%	62.7	1.8%	62.4	1.8%	58.6	1.8%	69.5	2.0%	62.9	1.8%
Music	13.7	0.5%	12.9	0.4%	14.7	0.4%	10.3	0.3%	7.5	0.2%	14.6	0.4%	11.1	0.3%
Natural History/Science	0.0	0.0%	0.0	0.0%	2.0	0.1%	0.0	0.0%	0.0	0.0%	1.7	0.0%	0.0	0.0%
Philosophy	7.5	0.2%	8.8	0.3%	10.0	0.3%	5.5	0.2%	8.0	0.2%	10.9	0.3%	6.4	0.2%
Physics	1.0	0.0%	4.3	0.1%	5.0	0.1%	6.3	0.2%	5.5	0.2%	5.9	0.2%	6.4	0.2%
Political Science	44.7	1.5%	43.1	1.4%	50.4	1.5%	50.5	1.4%	49.9	1.5%	52.8	1.5%	52.4	1.5%
Psychology	179.0	5.9%	198.2	6.5%	230.6	6.7%	213.4	6.1%	221.2	6.7%	233.3	6.7%	216.1	6.1%
Religion	12.5	0.4%	7.9	0.3%	6.9	0.2%	3.4	0.1%	4.6	0.1%	6.0	0.2%	3.4	0.1%
Religion & Philosophy	1.3	0.0%	4.8	0.2%	3.5	0.1%	1.0	0.0%	5.7	0.2%	2.9	0.1%	1.8	0.1%
Social Science	22.1	0.7%	17.4	0.6%	19.0	0.5%	16.6	0.5%	15.9	0.5%	21.4	0.6%	17.4	0.5%
Sociology	32.3	1.1%	38.9	1.3%	52.1	1.5%	58.3	1.7%	57.3	1.7%	59.9	1.7%	56.6	1.6%
Spanish	5.5	0.2%	7.7	0.3%	6.1	0.2%	13.6	0.4%	13.2	0.4%	6.4	0.2%	13.7	0.4%
Speech Communication	7.0	0.2%	9.0	0.3%	11.5	0.3%	21.1	0.6%	34.5	1.1%	15.5	0.4%	25.1	0.7%
Theatre Arts	18.3	0.6%	22.0	0.7%	21.0	0.6%	27.3	0.8%	25.4	0.8%	25.6	0.7%	28.7	0.8%
Student Designed Majors	0.0	0.0%	1.0	0.0%	2.4	0.1%	1.3	0.0%	1.0	0.0%	2.1	0.1%	0.6	0.0%
	1079.4	35.7%	1088.5	35.6%	1316.6	38.0%	1318.5	37.6%	1330.8	40.6%	1386.1	39.6%	1368.6	38.9%
College of Business & Public Management														
Accounting	62.6	2.1%	53.3	1.7%	50.5	1.5%	53.1	1.5%	43.5	1.3%	61.1	1.7%	53.4	1.5%
Business Administration	693.2	22.9%	634.3	20.7%	673.5	19.4%	663.0	18.9%	607.3	18.5%	638.9	18.2%	631.3	18.0%
Business Management	3.0	0.1%	0.2	0.0%	0.0	0.0%	2.0	0.1%	36.0	1.1%	0.0	0.0%	12.0	0.3%
E-Commerce	1.0	0.0%	1.0	0.0%	3.1	0.1%	9.9	0.3%	3.3	0.1%	4.8	0.1%	7.2	0.2%
Economics	7.1	0.2%	7.5	0.2%	6.1	0.2%	8.4	0.2%	6.0	0.2%	7.1	0.2%	5.6	0.2%
Health Administration/Management*	63.8	2.1%	52.2	1.7%	45.1	1.3%	34.4	1.0%	26.5	0.8%	29.6	0.8%	27.4	0.8%
Marketing	20.0	0.7%	15.0	0.5%	19.0	0.5%	19.3	0.6%	8.5	0.3%	19.3	0.6%	18.7	0.5%
Organizational Management*	363.4	12.0%	388.7	12.7%	392.0	11.3%	365.7	10.4%	353.3	10.8%	380.4	10.9%	368.3	10.5%
Public Administration*	50.1	1.7%	58.5	1.9%	60.3	1.7%	59.8	1.7%	61.8	1.9%	54.8	1.6%	64.4	1.8%
Student Designed Majors	0.0	0.0%	2.5	0.1%	4.0	0.1%	1.5	0.0%	0.5	0.0%	1.9	0.1%	1.1	0.0%
	1264.2	41.8%	1213.2	39.7%	1253.6	36.2%	1217.1	34.7%	1146.7	34.9%	1197.9	34.2%	1189.4	33.8%
College of Education & Organizational Leadership														
Child Development	84.6	2.8%	146.4	4.8%	231.8	6.7%	258.0	7.4%	241.3	7.4%	243.1	6.9%	262.5	7.5%
Diversified Education/Liberal Studies	442.7	14.6%	416.3	13.6%	410.3	11.8%	490.8	14.0%	436.2	13.3%	426.7	12.2%	476.0	13.5%
Multiple Subject (Credential)	0.0	0.0%	0.0	0.0%	7.0	0.2%	6.5	0.2%	5.8	0.2%	5.2	0.1%	6.7	0.2%
Single Subject (Credential)	0.0	0.0%	0.0	0.0%	0.7	0.0%	3.1	0.1%	4.1	0.1%	1.1	0.0%	3.1	0.1%
	527.3	17.4%	562.7	18.4%	649.8	18.8%	758.4	21.6%	687.4	21.0%	676.1	19.3%	748.2	21.3%
Major not declared	154.2	5.1%	192.9	6.3%	245.1	7.1%	214.9	6.1%	116.1	3.5%	243.5	6.9%	208.4	5.9%
Total Undergraduate Majors	3025.1	100.0%	3057.3	100.0%	3465.1	100.0%	3508.9	100.0%	3281.1	100.0%	3503.6	100.0%	3514.6	100.0%

* For explanation of FTE, see page 8.

Source: Institutional Research Annual Census on November 15.

**A-12: Graduate Student Full-Time Equivalent (FTE) by Major/Credential at All ULV Campuses*
Fall 2002 - Fall 2006 and Academic Year 2004-05 to 2005-06**

Major	Fall 2002		Fall 2003		Fall 2004		Fall 2005		Fall 2006		IPEDS 2004-05		IPEDS 2005-06	
College of Arts & Sciences														
Counseling (Concentration/Special Emphasis)	57.9	2.4%	37.2	1.5%	17.8	0.7%	21.9	0.9%	19.6	0.7%	17.7	0.8%	17.0	0.6%
Counseling / Marriage & Family Therapy (MFT)	30.0	1.2%	37.3	1.5%	56.3	2.3%	64.1	2.5%	64.3	2.3%	55.0	2.4%	53.5	2.0%
Student Designed Major	0.0	0.0%	0.9	0.0%	0.0	0.0%	0.0	0.0%	0.0	0.0%	0.0	0.0%	0.0	0.0%
	87.9	3.6%	75.4	3.0%	74.1	3.0%	86.0	3.3%	83.9	3.0%	72.7	3.1%	70.5	2.7%
College of Business & Public Management														
Business Administration	502.7	20.6%	587.9	23.6%	535.8	21.4%	557.5	21.7%	606.7	21.5%	437.8	18.8%	518.1	19.7%
Business Information Technology	5.6	0.2%	13.0	0.5%	12.5	0.5%	4.5	0.2%	4.5	0.2%	6.5	0.3%	7.1	0.3%
Business Organizational Management	85.7	3.5%	55.5	2.2%	31.7	1.3%	22.2	0.9%	30.0	1.1%	22.3	1.0%	22.1	0.8%
Gerontology	14.8	0.6%	22.1	0.9%	25.7	1.0%	26.6	1.0%	21.5	0.8%	23.3	1.0%	22.2	0.8%
Health Services Administration/Management	34.5	1.4%	41.5	1.7%	38.7	1.5%	31.0	1.2%	22.8	0.8%	24.3	1.0%	25.9	1.0%
Leadership & Management	54.3	2.2%	73.3	2.9%	62.0	2.5%	57.8	2.3%	59.5	2.1%	52.3	2.2%	53.0	2.0%
Public Administration	21.3	0.9%	39.5	1.6%	40.8	1.6%	49.5	1.9%	43.2	1.5%	36.3	1.6%	45.9	1.7%
Student Designed Major	0.0	0.0%	0.0	0.0%	0.0	0.0%	0.5	0.0%	0.0	0.0%	0.5	0.0%	0.1	0.0%
	718.9	29.5%	832.8	33.4%	747.2	29.9%	749.1	29.2%	788.2	28.0%	602.8	25.9%	694.5	26.4%
College of Education & Organizational Leadership														
Child Development	21.2	0.9%	31.3	1.3%	25.5	1.0%	55.2	2.1%	46.2	1.6%	27.0	1.2%	56.4	2.1%
Child Life	16.6	0.7%	19.5	0.8%	18.2	0.7%	27.9	1.1%	23.4	0.8%	13.5	0.6%	23.1	0.9%
Educational Management	173.7	7.1%	158.0	6.3%	145.3	5.8%	149.9	5.8%	119.5	4.2%	123.7	5.3%	135.8	5.2%
Multiple Subject (Credential)	333.7	13.7%	307.2	12.3%	217.4	8.7%	228.8	8.9%	214.9	7.6%	193.6	8.3%	205.1	7.8%
Preliminary Administrative Services (Credential)	30.8	1.3%	34.8	1.4%	22.5	0.9%	24.2	0.9%	12.1	0.4%	20.0	0.9%	16.1	0.6%
Pupil Personnel Services (Credential)	17.6	0.7%	4.3	0.2%	1.3	0.1%	2.9	0.1%	2.3	0.1%	2.5	0.1%	2.5	0.1%
Reading	28.9	1.2%	33.8	1.4%	46.3	1.9%	31.2	1.2%	31.8	1.1%	32.3	1.4%	34.3	1.3%
School/Educational Counseling	469.0	19.2%	213.8	8.6%	231.8	9.3%	271.7	10.6%	313.6	11.1%	228.1	9.8%	269.6	10.2%
Single Subject (Credential)	174.1	7.1%	210.0	8.4%	147.6	5.9%	144.6	5.6%	107.5	3.8%	126.1	5.4%	115.9	4.4%
Special Education	8.6	0.4%	19.1	0.8%	27.2	1.1%	27.0	1.1%	26.4	0.9%	29.0	1.2%	28.5	1.1%
Special Emphasis	143.2	5.9%	183.8	7.4%	371.2	14.8%	270.1	10.5%	285.6	10.1%	276.5	11.9%	260.3	9.9%
Special Emphasis: Advanced Teaching Methods	51.2	2.1%	23.5	0.9%	28.5	1.1%	47.8	1.9%	0.0	0.0%	38.3	1.6%	23.0	0.9%
Student Designed Majors	0.3	0.0%	0.0	0.0%	0.0	0.0%	0.0	0.0%	0.0	0.0%	0.0	0.0%	0.0	0.0%
	1468.9	60.2%	1239.1	49.7%	1282.8	51.3%	1281.3	49.9%	1183.3	42.0%	1110.6	47.8%	1170.7	44.5%
Major not Declared	163.7	6.7%	347.4	13.9%	398.0	15.9%	452.3	17.6%	763.7	27.1%	539.3	23.2%	697.4	26.5%
Total Graduate Students	2439.4	100.0%	2494.7	100.0%	2502.1	100.0%	2568.7	100.0%	2819.1	100.0%	2325.4	100.0%	2632.9	100.0%

**A- 13: Doctoral Student FTE by Major/Credential at All ULV Campu
Fall 2002 - Fall 2006 and Academic Year 2004-05 to 2005-06**

Major	Fall 2002		Fall 2003		Fall 2004		Fall 2005		Fall 2006		IPEDS 2004-05		IPEDS 2005-06	
Clinical-Community Psychology (PsyD)	56.8	15.3%	56.3	15.0%	61.6	15.5%	66.2	19.4%	70.6	21.1%	58.4	20.3%	60.3	24.1%
Educational/Org. Leadership/Management (EdD)	223.3	60.3%	233.3	62.3%	236.2	59.4%	202.9	59.4%	198.7	59.4%	155.4	54.0%	138.8	55.4%
Professional Administrative Services (Credential)	22.0	5.9%	6.7	1.8%	0.8	0.2%	1.0	0.3%	1.1	0.3%	8.2	2.9%	0.8	0.3%
Public Administration (DPA)	65.0	17.6%	56.0	15.0%	67.3	16.9%	60.8	17.8%	63.1	18.9%	46.0	16.0%	43.5	17.3%
	367.1	99.2%	352.3	94.1%	365.9	92.0%	331.0	96.9%	333.5	99.7%	268.0	93.2%	243.3	97.1%
Major not Declared	3.0	0.8%	22.0	5.9%	31.7	8.0%	10.7	3.1%	1.0	0.3%	19.6	6.8%	7.4	2.9%
Total Doctoral Majors	370.1	100.0%	374.3	100.0%	397.6	100.0%	341.7	100.0%	334.5	100.0%	287.6	100.0%	250.7	100.0%

**A- 14: First Professional Student FTE by Major at All ULV Campus
Fall 2002 - Fall 2006 and Academic Year 2004-05 to 2005-06**

Major	Fall 2002		Fall 2003		Fall 2004		Fall 2005		Fall 2006		IPEDS 2004-05		IPEDS 2005-06	
Juris Doctor (JD)	161.2	100.0%	266.9	100.0%	306.2	100.0%	364.0	100.0%	371.8	100.0%	242.5	100.0%	371.8	100.0%
Total First Professional Majors	161.2	100.0%	266.9	100.0%	306.2	100.0%	364.0	100.0%	371.8	100.0%	242.5	100.0%	371.8	100.0%

* For explanation of FTE, see page 8.
Source: Institutional Research Annual Census on November 15.

A-15: Change in FTE by Campus/Program and by College*
Fall 2002 - Fall 2006

By Campus/Program**	Fall 2002		Fall 2003		Fall 2004		Fall 2005		Fall 2006	
Main Campus Undergraduate	1,404.4	23.4%	1,379.8	22.3%	1,603.5	24.0%	1,697.7	25.0%	1,635.7	24.0%
Main Campus Graduate***	1,544.7	25.8%	1,820.8	29.4%	1,917.5	28.7%	1,842.1	27.2%	1,843.8	27.1%
CAPA	497.5	8.3%	482.7	7.8%	518.5	7.8%	505.2	7.4%	442.3	6.5%
Regional Campus Programs	2,430.8	40.5%	2,188.5	35.3%	2,234.7	33.5%	2,264.4	33.4%	2,116.3	31.1%
Others****	118.1	2.0%	321.0	5.2%	397.4	6.0%	473.9	7.0%	768.5	11.3%
	5,995.5	100.0%	6,192.8	100.0%	6,671.6	100.0%	6,783.4	100.0%	6,806.5	100.0%

By College*****	Fall 2002		Fall 2003		Fall 2004		Fall 2005		Fall 2006	
College of Arts & Sciences	1,224.1	20.4%	1,220.2	19.7%	1,452.3	21.8%	1,470.7	21.7%	1,485.3	21.8%
College of Business & Public Management	2,048.1	34.2%	2,102.0	33.9%	2,068.1	31.0%	2,027.0	29.9%	1,998.0	29.4%
College of Education & Org. Leadership	2,241.5	37.4%	2,041.8	33.0%	2,169.6	32.5%	2,243.7	33.1%	2,070.5	30.4%
College of Law	161.2	2.7%	266.9	4.3%	306.2	4.6%	364.0	5.4%	371.8	5.5%
Major not designed	320.9	5.4%	562.3	9.1%	674.8	10.1%	677.9	10.0%	880.8	12.9%
	5,995.8	100.0%	6,193.2	100.0%	6,671.0	100.0%	6,783.3	100.0%	6,806.5	100.0%

* For explanation of FTE, see page 8.

** The numbers of this table are calculated from the report of page 8.

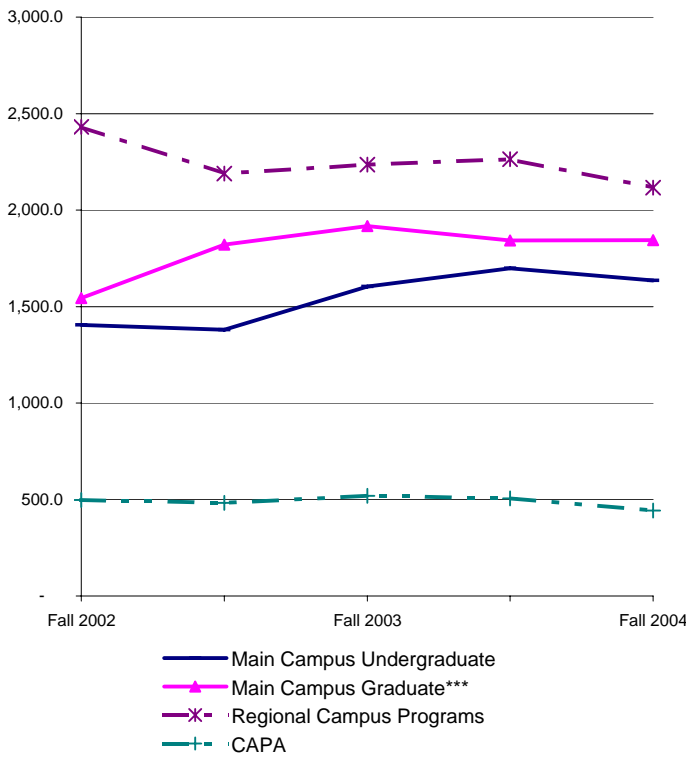
*** This category includes Main Campus Graduates, Law, EdD, DPA, and PASC.

**** This category includes Other Programs, Special Programs (Professional Development), Overseas Programs, and Campus-Not-Designed of page 8.

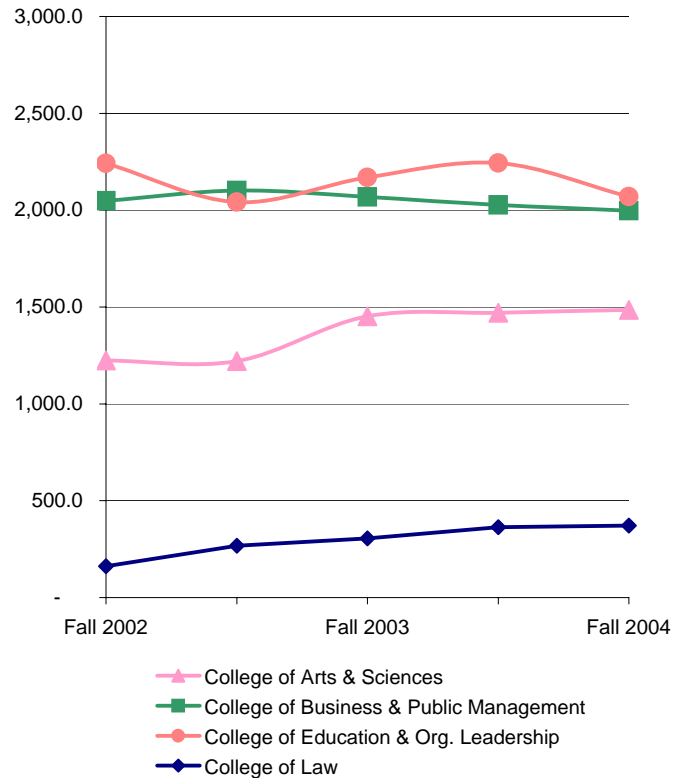
***** The numbers on this table are based on the reports of page 9 and page 10.

Source: Institutional Research Annual Census on November 15.

Change in FTE by Campus/Program
Fall 2002 - Fall 2006



Change in FTE by College
Fall 2002 - Fall 2006



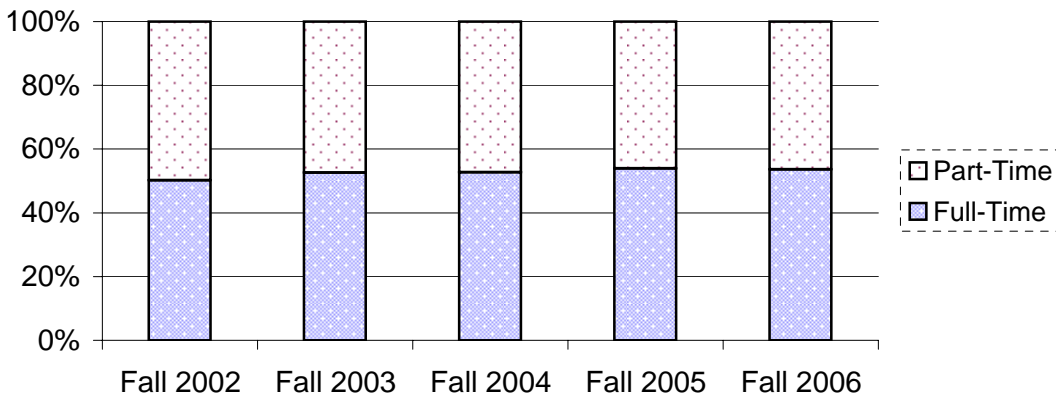
**A-16: Classification and Enrollment Status of All ULV Students
Fall 2002 - Fall 2006**

Student Level	Fall 2002		Fall 2003		Fall 2004		Fall 2005		Fall 2006	
Freshman	874	11.4%	833	10.9%	942	11.3%	790	9.5%	693	8.3%
Sophomore	647	8.4%	662	8.7%	670	8.1%	690	8.3%	616	7.4%
Junior	895	11.7%	989	12.9%	1123	13.5%	1098	13.2%	1073	12.9%
Senior	1427	18.6%	1385	18.1%	1623	19.5%	1789	21.5%	1717	20.6%
Graduate (Masters Level)	3134	40.9%	3034	39.7%	3165	38.0%	3184	38.3%	3455	41.5%
Doctoral	557	7.3%	548	7.2%	577	6.9%	518	6.2%	511	6.1%
First Professional	127	1.7%	195	2.6%	221	2.7%	255	3.1%	263	3.2%
Total	7661	100%	7646	100%	8321	100%	8324	100%	8328	100%

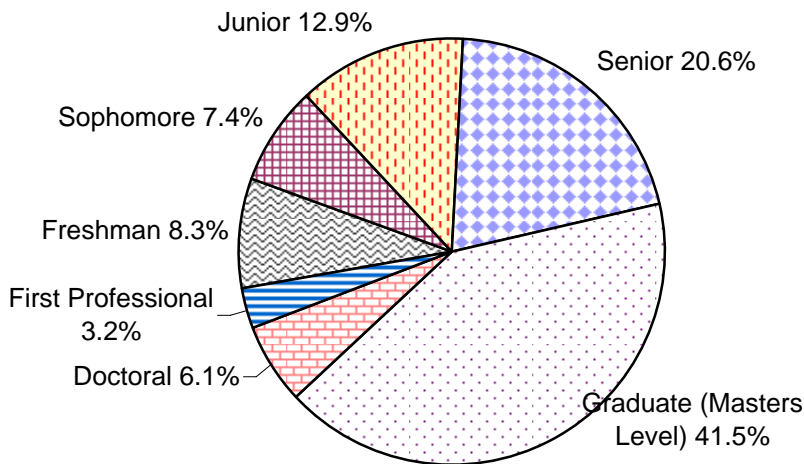
Enrollment Status	Fall 2002		Fall 2003		Fall 2004		Fall 2005		Fall 2006	
Full-Time	3846	50.2%	4020	52.6%	4385	52.7%	4492	54.0%	4465	53.6%
Part-Time	3815	49.8%	3626	47.4%	3940	47.3%	3832	46.0%	3863	46.4%
Total	7661	100%	7646	100%	8325	100%	8324	100%	8328	100%

Source: Institutional Research Annual Census on November 15.

**Enrollment Status of ULV Students
Fall 2002-Fall 2006**



Level of ULV Students - Fall 2006



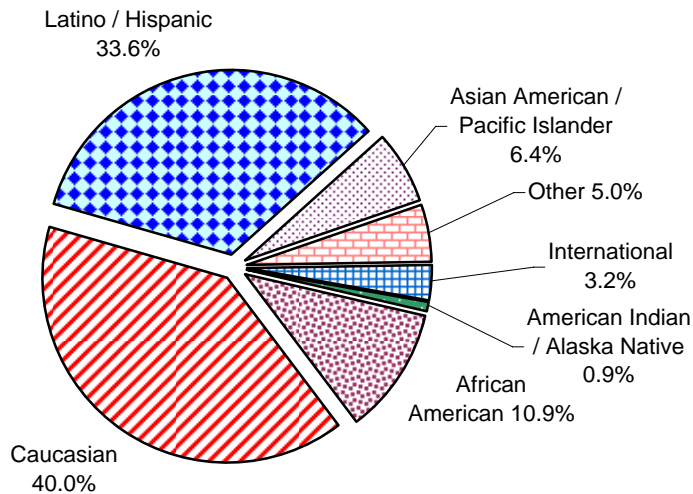
**A-17: Ethnicity and Gender of All ULV Students
Fall 2002 - Fall 2006**

Ethnicity	Fall 2002		Fall 2003		Fall 2004		Fall 2005		Fall 2006	
American Indian / Alaska Native	86	1.1%	61	0.8%	80	1.1%	77	1.0%	64	0.9%
African American	848	11.1%	814	10.7%	834	11.5%	789	10.5%	740	10.9%
Caucasian	3346	43.7%	3169	41.5%	3139	43.4%	2975	39.4%	2721	40.0%
Latino / Hispanic	1939	25.3%	2002	26.2%	2318	32.0%	2399	31.8%	2290	33.6%
Asian American / Pacific Islander	401	5.2%	403	5.3%	402	5.6%	409	5.4%	436	6.4%
Other	855	11.2%	1004	13.1%	291	4.0%	690	9.1%	338	5.0%
International	186	2.4%	189	2.5%	169	2.3%	204	2.7%	217	3.2%
Total	7661	100%	7642	100%	7233	100%	7543	100%	6806	100%

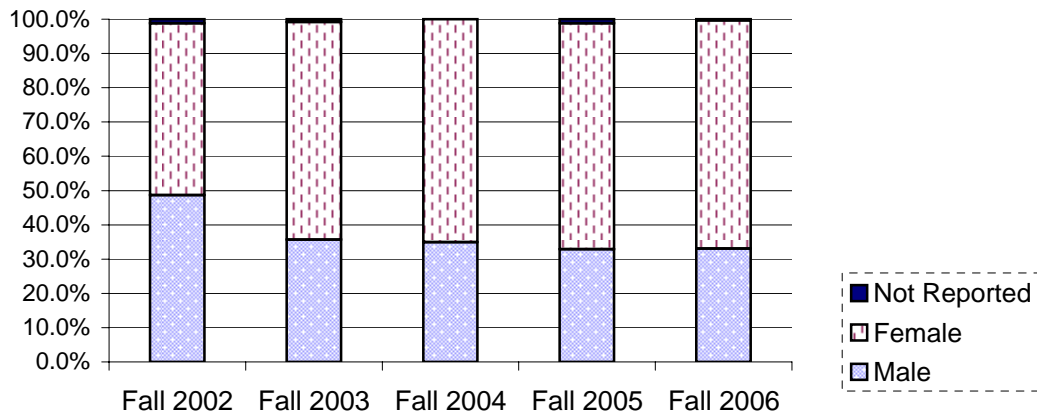
Gender	Fall 2002		Fall 2003		Fall 2004		Fall 2005		Fall 2006	
Male	3725	48.6%	2725	35.6%	2904	34.9%	2739	32.9%	2756	33.1%
Female	3845	50.2%	4857	63.5%	5421	65.1%	5487	65.9%	5538	66.5%
Not Reported	91	1.2%	64	0.8%	0	0.0%	98	1.2%	34	0.4%
Total	7661	100%	7646	100%	8325	100%	8324	100%	8328	100%

Source: Institutional Research Annual Census on November 15.

Ethnicity of All ULV Students - Fall 2006



**Gender of All ULV Students
Fall 2002- Fall 2006**



A-18: Student Age by Campus/Program and Class - Fall 2006

Main Campus Programs	Under 20		Age 20 - 25		Age 25- 29		Age 30-39		40 or Over	
Main Campus Undergraduate	591	98.7%	1036	57.5%	51	3.5%	7	0.3%	1	0.1%
Main Campus Graduate	0	0.0%	300	16.7%	301	20.4%	377	17.6%	291	15.6%
Bakersfield Credential	0	0.0%	29	1.6%	29	2.0%	31	1.4%	35	1.9%
DPA	0	0.0%	12	0.7%	12	0.8%	25	1.2%	67	3.6%
EdD	0	0.0%	13	0.7%	13	0.9%	92	4.3%	235	12.6%
PASC	0	0.0%	0	0.0%	0	0.0%	0	0.0%	2	0.1%
Law*	0	0.0%	116	6.4%	116	7.9%	46	2.1%	23	1.2%
	591	98.7%	1506	83.6%	522	35.4%	578	27.0%	654	35.1%

Regional Campus Administration (RCA)

CAPA	0	0.0%	24	1.3%	201	13.6%	297	13.9%	232	12.4%
Education**	0	0.0%	26	1.4%	116	7.9%	220	10.3%	148	7.9%
ULV Online	0	0.0%	19	1.1%	43	2.9%	81	3.8%	71	3.8%
Teacher Credential (RCA Ed.)	0	0.0%	27	1.5%	51	3.5%	46	2.1%	40	2.1%
	0	0.0%	96	5.3%	411	27.9%	644	30.1%	491	26.3%

Professional Development Centers

Central Coast	0	0.0%	25	1.4%	22	1.5%	17	0.8%	22	1.2%
High Desert Victorville	0	0.0%	15	0.8%	19	1.3%	37	1.7%	57	3.1%
Inland Empire	0	0.0%	15	0.8%	49	3.3%	98	4.6%	114	6.1%
Kern County/Bakersfield	1	0.2%	34	1.9%	37	2.5%	43	2.0%	42	2.3%
Orange County	0	0.0%	6	0.3%	35	2.4%	105	4.9%	190	10.2%
San Fernando Valley	0	0.0%	22	1.2%	58	3.9%	131	6.1%	150	8.0%
Ventura County	0	0.0%	15	0.8%	15	1.0%	39	1.8%	61	3.3%
	1	0.2%	117	6.5%	235	15.9%	470	21.9%	636	34.1%

Residence Centers

Point Mugu	6	1.0%	50	2.8%	83	5.6%	97	4.5%	47	2.5%
Vandenberg	0	0.0%	8	0.4%	20	1.4%	12	0.6%	22	1.2%
	6	1.0%	58	3.2%	103	7.0%	109	5.1%	69	3.7%

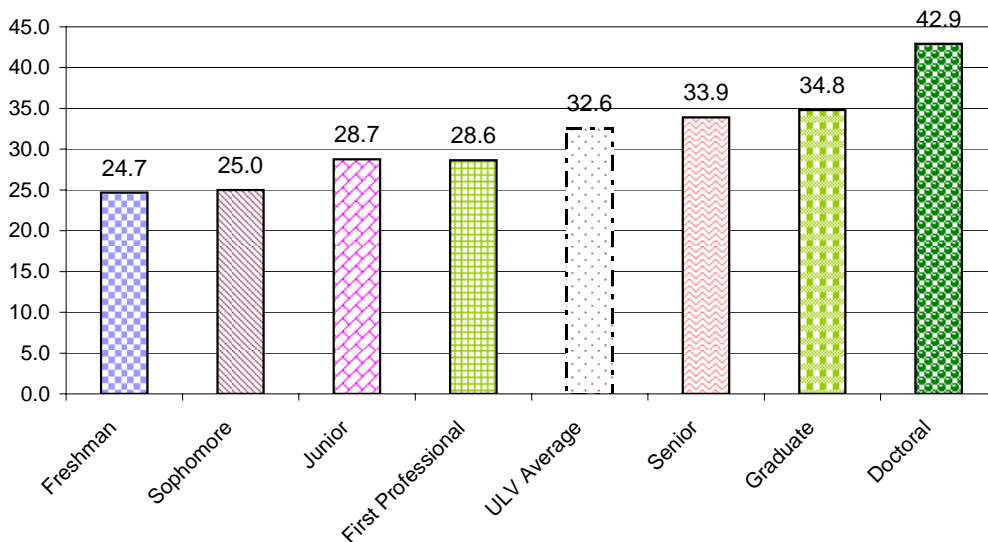
Other and Special Programs

Ecumenical Centers (ABTC/ECBCS)	1	0.2%	5	0.3%	8	0.5%	7	0.3%	15	0.8%
Professional Development/Travel Learning	0	0.0%	0	0.0%	0	0.0%	1	0.0%	0	0.0%
	1	0.2%	5	0.3%	8	0.5%	8	0.4%	15	0.8%

Campus not Designated	0	0.0%	19	1.1%	195	13.2%	333	15.5%	0	0.0%
Enrollment Grand Total	599	100.0%	1801	100.0%	1474	100.0%	2142	100.0%	1865	100.0%

Source: Institutional Research Annual Census on November 15.

Student Average Age by Class



A-19: International Student Profile: Fall 2002 - Fall 2006

By Gender	2002		2003		2004		2005		2006	
	Count	% Count	Count	% Count	Count	% Count	Count	% Count	Count	% Count
Male	94	48.7%	80	46.2%	91	53.2%	103	48.1%	123	47.7%
Female	99	51.3%	93	53.8%	80	46.8%	111	51.9%	135	52.3%
Grand Total	193	100.0%	173	100.0%	171	100.0%	214	100.0%	258	100.0%

By Student Level

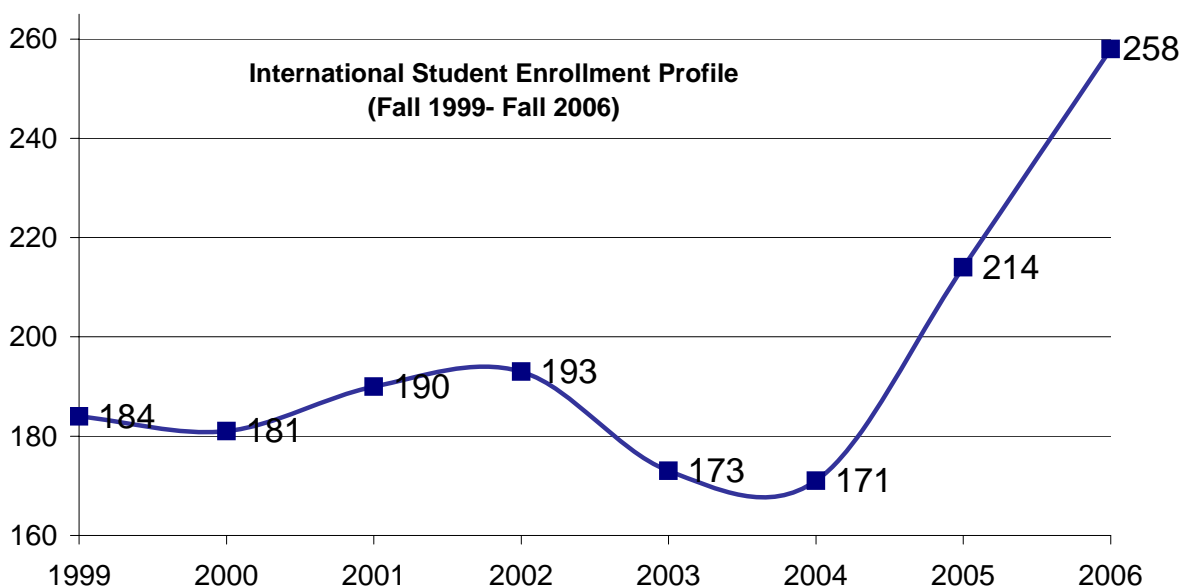
Undergraduate	20	10.4%	14	8.1%	12	7.0%	48	22.4%	30	11.6%
Masters	165	85.5%	147	85.0%	143	83.6%	144	67.3%	212	82.2%
Doctoral and Juris Doctor	8	4.1%	12	6.9%	16	9.4%	22	10.3%	16	6.2%
Grand Total	193	100.0%	173	100.0%	171	100.0%	214	100.0%	258	100.0%

By Leading Majors

Business Administration	148	76.7%	128	74.0%	131	76.6%	147	68.7%	200	77.5%
Juris Doctor	2	1.0%	5	2.9%	10	5.8%	12	5.6%	8	3.1%
Public Administration (DPA)	6	3.1%	7	4.0%	6	3.5%	10	4.7%	8	3.1%
Other Majors	37	19.2%	33	19.1%	24	14.0%	45	21.0%	42	16.3%
Grand Total	193	100.0%	173	100.0%	171	100.0%	214	100.0%	258	100.0%

By Countries with Largest Representation

Taiwan	41	21.2%	50	28.9%	56	32.7%	71	33.2%	126	48.8%
Thailand	72	37.3%	66	38.2%	53	31.0%	43	20.1%	59	22.9%
Japan	13	6.7%	8	4.6%	11	6.4%	12	5.6%	10	3.9%
China	22	11.4%	12	6.9%	13	7.6%	8	3.7%	9	3.5%
Albania	0	0.0%	0	0.0%	0	0.0%	10	4.7%	8	3.1%
Canada	3	1.6%	5	2.9%	7	4.1%	9	4.2%	6	2.3%
Greece	0	0.0%	0	0.0%	0	0.0%	10	4.7%	3	1.2%
Other	42	21.8%	32	18.5%	31	18.1%	51	23.8%	37	14.3%
Grand Total	193	100.0%	173	100.0%	171	100.0%	214	100.0%	258	100.0%



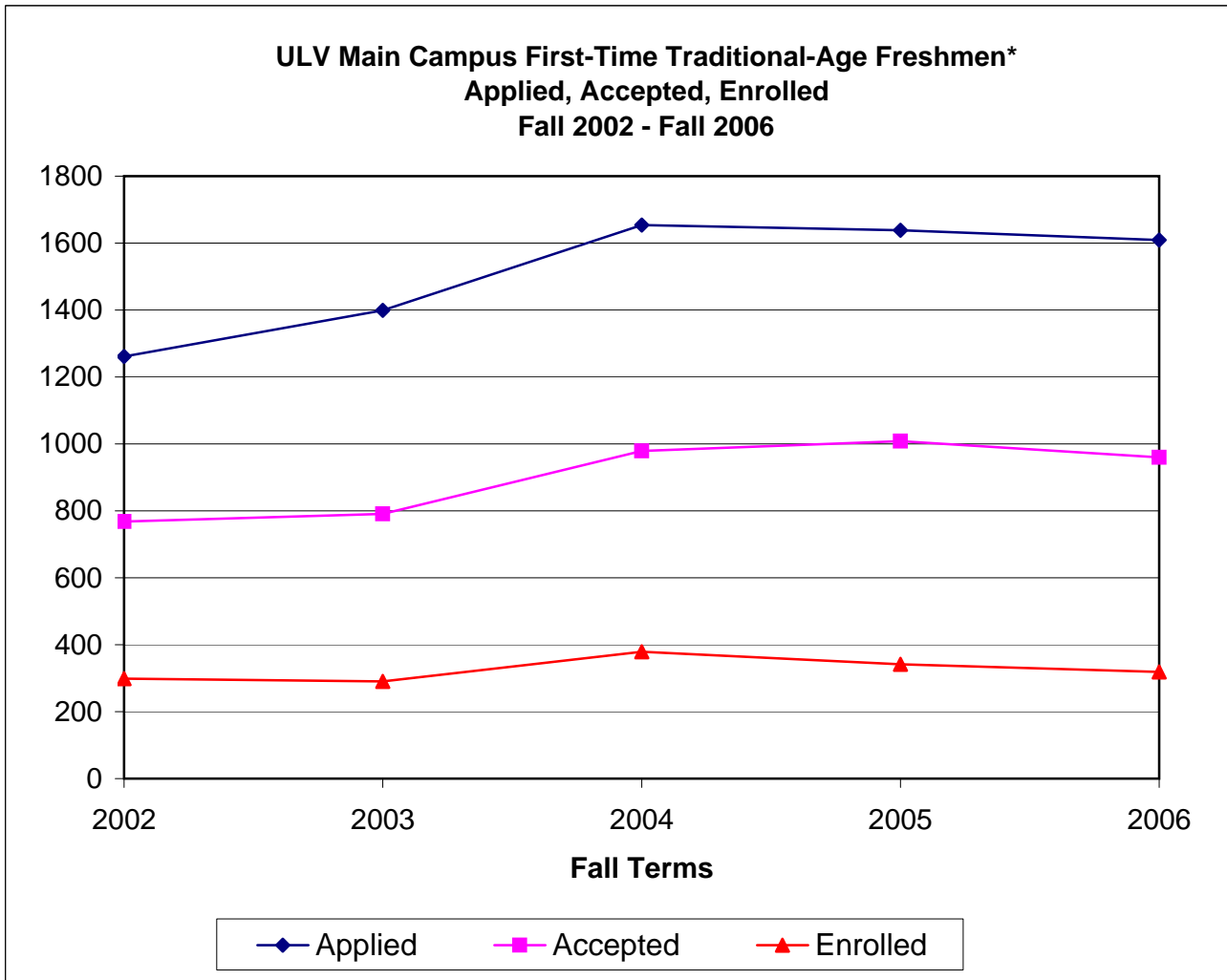
Source: International and Study Abroad Center.

B.
ADMISSIONS
&
NEW
STUDENTS

All statistics are based on data from ULV's census on November 15 for each year specified, unless otherwise noted.

B-1: Admission Statistics for Main Campus First-Time Traditional-Age Freshmen*

Application, Acceptance, and Enrollment Statistics Fall 2002 - Fall 2006

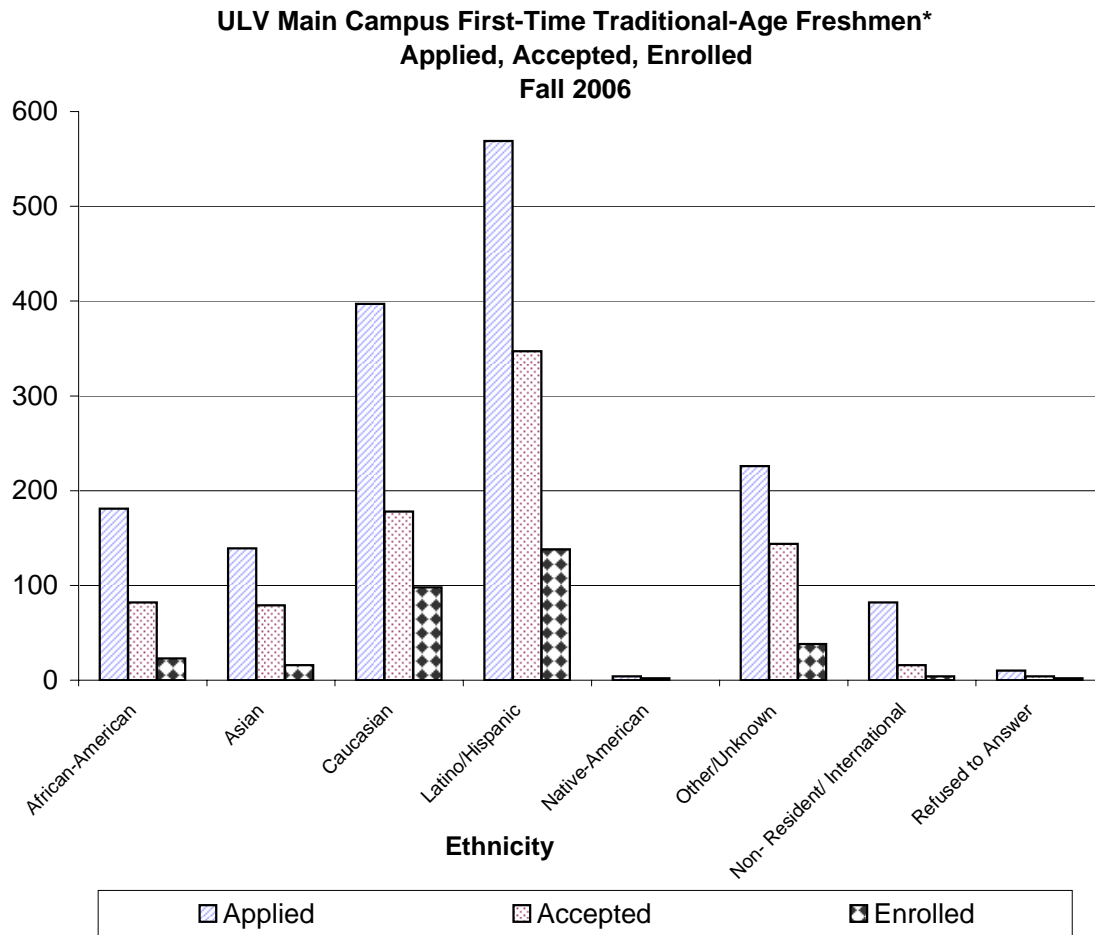


Fall	Applied	Accepted	Acceptance Rate	Enrolled	Yield Rate
2002	1261	768	61%	299	39%
2003	1399	791	57%	290	37%
2004	1654	979	59%	379	39%
2005	1638	1008	62%	342	34%
2006	1609	960	60%	319	33%

* Does not include Advanced Freshmen, who have taken less than 32 college credits after graduating from high school.

Source: Institutional Research Admission Census on October 15, except the "enrolled" for 2006, which is from Institutional Research Census on 11/15/2006.

B-2: Application, Acceptance, and Enrollment Statistics by Ethnicity of Main Campus First Time Traditional-Age Freshmen



Ethnicity	Yield Rate Fall 2001- Fall 2005					Fall 2006				
	2001	2002	2003	2004	2005	Applied	Accepted	Enrolled	Acceptan ce Rate	Yield Rate
African-American	25%	28%	32%	33%	32%	181	82	23	45%	28%
Asian	23%	22%	20%	17%	20%	139	79	16	57%	20%
Caucasian	39%	39%	39%	40%	32%	397	178	98	45%	55%
Latino/Hispanic	43%	44%	43%	44%	40%	569	347	138	61%	40%
Native-American	22%	100%	50%	75%	0%	4	2	0	50%	0%
Other/Unknown	38%	45%	30%	41%	38%	226	144	38	64%	26%
Non- Resident/ International	-	-	-	0	10%	82	16	4	20%	25%
Refused to Answer	-	-	-	0.33	29%	10	4	2	40%	50%

Source: Institutional Research Admission Census on October 15, except the "enrolled" for 2006, which is from Institutional Research Census on 11/15/2006.

**B-3: New Main Campus Traditional-Age Students by Gender
Fall 2002 - Fall 2006**

New First-Time Freshmen

Gender	Fall 2002		Fall 2003		Fall 2004		Fall 2005		Fall 2006	
Male	121	38.1%	100	33.0%	123	30.5%	106	30.1%	111	34.8%
Female	197	61.9%	203	67.0%	280	69.5%	246	69.9%	208	65.2%
Total	318	100.0%	303	100.0%	403	100.0%	352	100.0%	319	100.0%

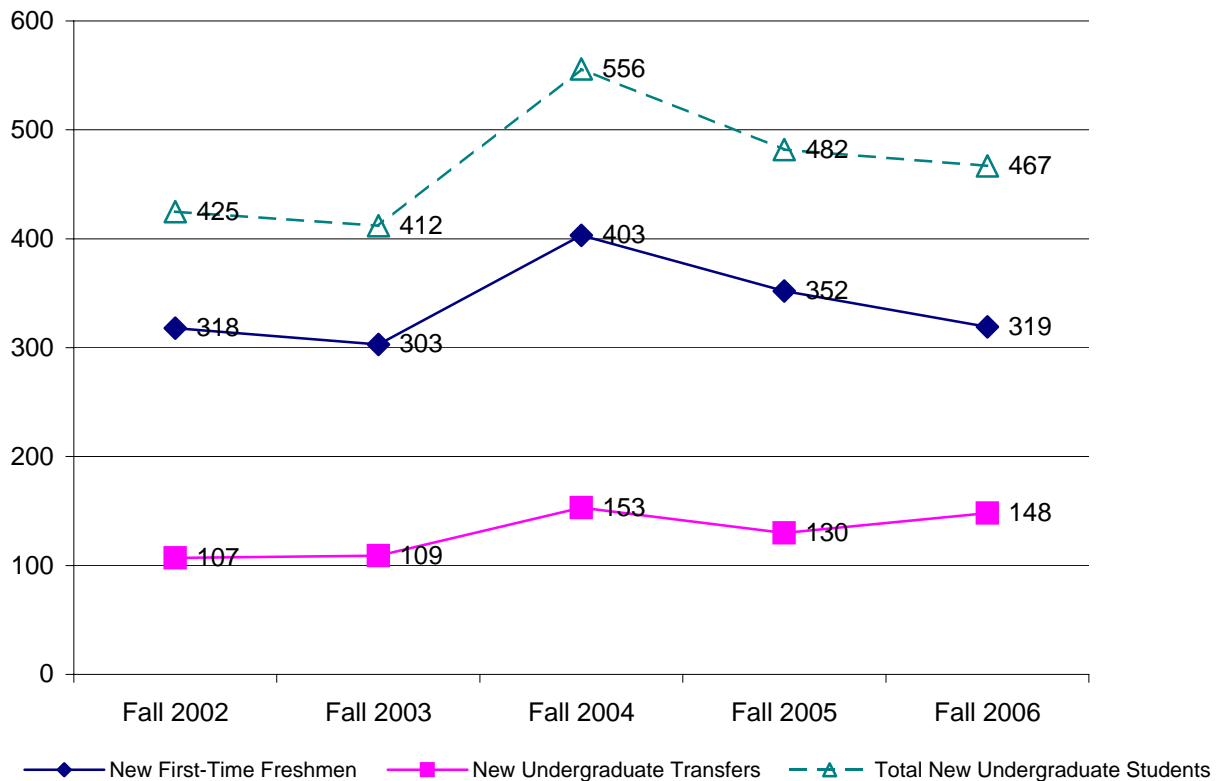
New Undergraduate Transfers

Male	53	49.5%	41	37.6%	80	52.3%	56	43.1%	74	50.0%
Female	54	50.5%	68	62.4%	73	47.7%	74	56.9%	74	50.0%
Total	107	100.0%	109	100.0%	153	100.0%	130	100.0%	148	100.0%

Total New Undergraduate Students

Male	174	40.9%	141	34.2%	203	36.5%	162	33.6%	185	39.6%
Female	251	59.1%	271	65.8%	353	63.5%	320	66.4%	282	60.4%
Total New Students	425	100%	412	100%	556	100%	482	100%	467	100%

New Main Campus Undergraduate Enrollment (Fall 2002- Fall 2006)



Source: Fall 2002-Fall 2005, Institutional Research Admission Census on October 15; Fall 2006, Institutional Research Annual Census on November 15.

**B-4: Main Campus New Traditional-Age Students by Ethnicity
Fall 2002 - Fall 2006**

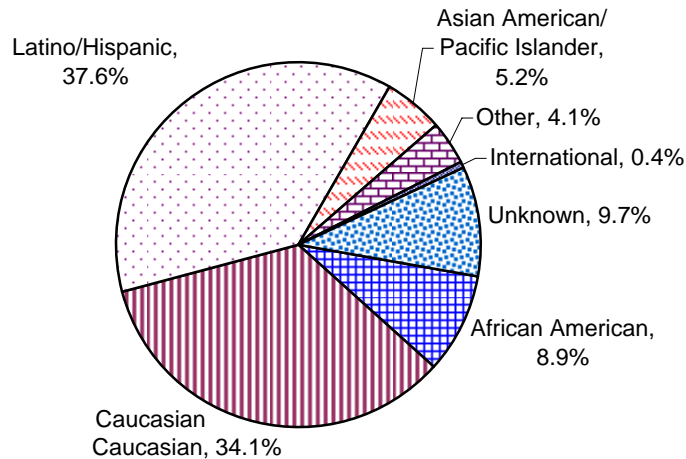
New Traditional-Age Freshmen

Ethnicity	Fall 2002		Fall 2003		Fall 2004		Fall 2005		Fall 2006	
	Count	%	Count	%	Count	%	Count	%	Count	%
American Indian/ Alaskan Native	2	0.6%	3	1.0%	3	0.7%	0	0.0%	0	0.0%
African American	25	7.9%	25	8.3%	33	8.2%	33	9.4%	23	7.2%
Caucasian	104	32.7%	111	36.6%	145	36.0%	107	30.4%	98	30.7%
Latino/Hispanic	123	38.7%	124	40.9%	156	38.7%	135	38.4%	138	43.3%
Asian American/ Pacific Islander	17	5.3%	16	5.3%	13	3.2%	18	5.1%	16	5.0%
Other	20	6.3%	12	4.0%	26	6.5%	25	7.1%	16	5.0%
International	0	0.0%	0	0.0%	0	0.0%	0	0.0%	4	1.3%
Unknown	27	8.5%	12	4.0%	27	6.7%	34	9.7%	24	7.5%
Total	318	100%	303	100%	403	100%	352	100%	319	100%

New Traditional-Age Transfers

Ethnicity	Fall 2002		Fall 2003		Fall 2004		Fall 2005		Fall 2006	
	Count	%	Count	%	Count	%	Count	%	Count	%
American Indian/ Alaskan Native	1	0.9%	0	0.0%	0	0.0%	1	0.8%	0	0.0%
African American	7	6.5%	14	12.8%	20	13.1%	17	13.1%	18	12.2%
Caucasian	39	36.4%	42	38.5%	57	37.3%	43	33.1%	60	40.5%
Latino/Hispanic	31	29.0%	34	31.2%	47	30.7%	45	34.6%	36	24.3%
Asian American/ Pacific Islander	9	8.4%	4	3.7%	4	2.6%	5	3.8%	8	5.4%
Other	7	6.5%	6	5.5%	8	5.2%	2	1.5%	3	2.0%
International	0	0.0%	6	5.5%	7	4.6%	9	6.9%	2	1.4%
Unknown/Refuse to Answer	13	12.1%	3	2.8%	10	6.5%	8	6.2%	21	14.2%
Total	107	100%	109	100%	153	100%	130	100%	148	100%

Ethnicity of New Traditional-Age Freshmen and New Traditional- Age Transfer Students - Fall 2006

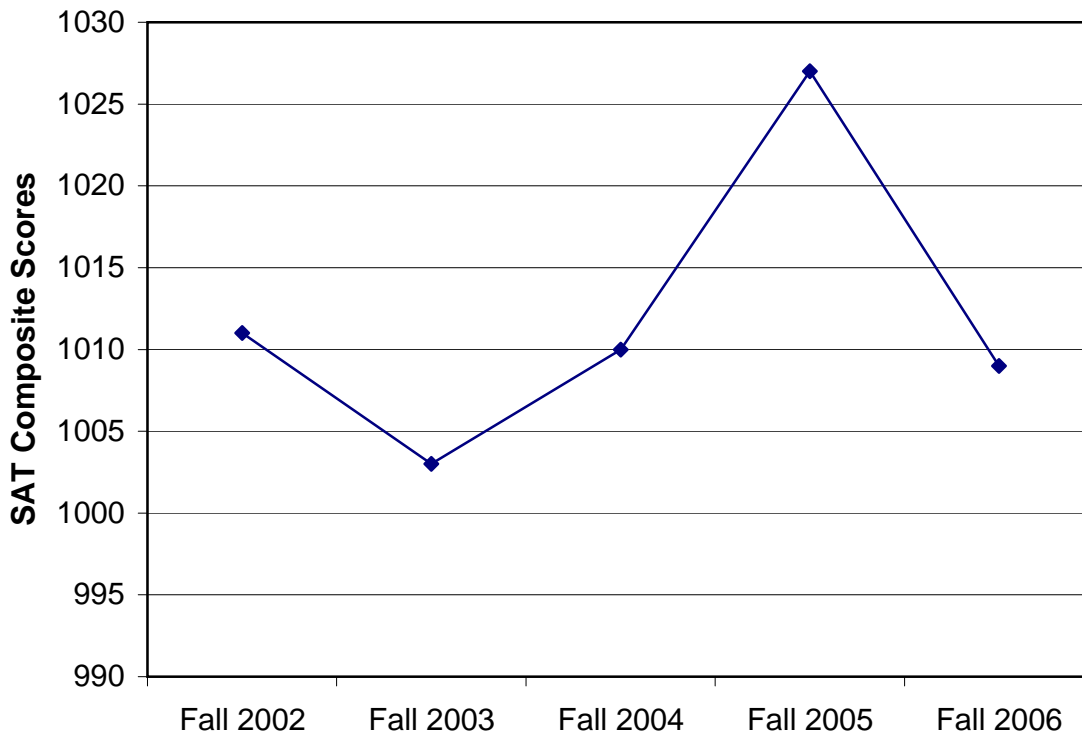


Source: Fall 2002-Fall 2005, Institutional Research Admission Census on October 15; Fall 2006, Institutional Research Annual Census on November 15.

**B-5: New Main Campus Traditional-Age Freshman SAT Scores
Fall 2002 - Fall 2006**

Test Scores	Fall 2002		Fall 2003		Fall 2004		Fall 2005		Fall 2006	
	Mean	Median	Mean	Median	Mean	Median	Mean	Median	Mean	Median
SAT Math	511	500	504	500	500	510	515	510	505	500
SAT Verbal	500	500	499	490	500	502	512	510	505	500
SAT Composite	1011	1000	1003	990	1010	1013	1027	1020	1009	1000

**Mean SAT Composite Scores
for New Main Campus Traditional-Age Freshmen
Fall 2002 - Fall 2006**



Source: Fall 2002-Fall 2005, Institutional Research Admission Census on October 15; Fall 2006, Institutional Research Annual Census on November 15 and Institutional Research Admission Census on October 15.

**B-6: New Main Campus Undergraduate Students by Entrance GPA
Fall 2002 - Fall 2006**

New Main Campus Traditional-Age Freshmen

GPA Range	Fall 2002	Fall 2003	Fall 2004	Fall 2005	Fall 2006
3.50 - 4.00+	158	145	188	171	146
3.00 - 3.49	121	132	162	119	112
2.50 - 2.99	34	23	51	55	56
2.00 - 2.49	2	2	1	3	2
GPA not reported	3	1	0	4	3
	318	303	402	352	319
Mean Freshmen GPA	3.48	3.49	3.48	3.46	3.45

New Main Campus Traditional-Age Transfers

GPA Range	Fall 2002	Fall 2003	Fall 2004	Fall 2005	Fall 2006
3.50 - 4.00+	13	11	11	14	19
3.00 - 3.49	32	34	34	43	41
2.50 - 2.99	28	43	43	51	67
2.00 - 2.49	23	9	9	11	18
Below 2.00	1	0	0	0	0
GPA not reported	10	12	12	11	3
	107	109	109	130	148
Mean Transfer GPA	2.91	2.97	3.00	2.99	2.97

Source: Fall 2002-Fall 2005, Institutional Research Admission Census on October 15; Fall 2006, Institutional Research Annual Census on November 15 and Institutional Research Admission Census on October 15.

**B-7: Top 15 High School Origins of New Main Campus First-Time Traditional-Age Freshmen
Fall 2002 - Fall 2006**

High School Origin	Fall 2002	Fall 2003	Fall 2004	Fall 2005	Fall 2006
Bonita High School	8	12	17	8	14
Damien High School	1	8	4	3	13
Chaffey High School	5	6	7	5	12
Upland High School	8	3	13	13	10
Charter Oak High School	8	5	7	2	8
Ganesha High School	4	6	6	0	8
Bishop Amat Memorial High Sch	7	6	4	8	7
South Hills High School	6	5	5	7	7
Glendora High School	6	6	8	8	6
Diamond Ranch High School	9	4	2	3	6
Claremont High School	20	5	5	5	5
Etiwanda High School	13	2	2	11	5
Saint Lucys Priory School	10	2	4	3	5
Northview High School	5	6	11	2	4
Rancho Cucamonga High School	8	6	5	2	4
Pomona Catholic High School	8	5	7	5	2
Other Schools	192	216	296	267	203
Gand Total	318	303	403	352	319

**B-8: Top 15 College/University Origins of New Main Campus Traditional-Age Undergraduate Transfers
Fall 2002 - Fall 2006**

College/University	Fall 2002	Fall 2003	Fall 2004	Fall 2005	Fall 2006
Chaffey Community College	4	6	10	9	15
Citrus College	10	19	25	22	14
Mount San Antonio College	9	10	20	21	10
Pasadena City College	1	5	3	9	7
Riverside Community College	3	2	4	4	5
Calif State Poly Univ, Pomona	2	2	2	3	5
Fullerton College	5	1	5	3	5
Rio Hondo College	3	2	2	2	4
Azusa Pacific University	1	1	1	3	2
Fashion Inst Los Angeles	0	3	3	3	2
Victor Valley College	0	0	1	3	2
Compton Community College	0	0	3	0	2
Glendale Community College	1	0	4	0	2
Mount San Jacinto College	2	1	2	0	2
UC, Riverside	1	1	2	0	2
Other Colleges/Universities	65	56	66	48	69
Gand Total	107	109	153	130	148

Source: Fall 2002-Fall 2005, Institutional Research Admission Census on October 15; Fall 2006, Institutional Research Annual Census on November 15.

**B-9: New Main Campus Traditional-Age Students by Geographic Region
Fall 2002 - Fall 2006**

U.S. State	Fall 2002	Fall 2003	Fall 2004	Fall 2005	Fall 2006
Arizona	5	2	3	3	4
California	389	380	513	451	429
Colorado	1	0	1	0	2
Connecticut	0	1	1	0	0
Florida	0	1	0	1	1
Hawaii	1	3	5	3	8
Idaho	0	0	1	0	0
Illinois	0	0	1	0	1
Indiana	0	0	0	0	1
Kansas	1	0	0	0	0
Kentucky	0	0	0	0	0
Massachusetts	0	3	1	0	0
Maryland	0	0	0	0	1
Minnesota	0	1	0	0	0
Missouri	0	1	1	0	0
Nevada	0	4	1	2	0
New Hampshire	0	0	2	0	0
New Jersey	0	0	1	0	0
New Mexico	0	0	1	0	0
New York	0	0	1	2	1
Ohio	1	1	1	0	1
Oklahoma	0	0	0	0	0
Oregon	2	6	3	0	4
Pennsylvania	1	2	2	0	0
Texas	1	0	1	0	0
Utah	0	1	0	0	1
Virginia	0	0	1	1	0
Washington	5	0	8	8	5
Wisconsin	1	0	0	0	0
Unknown U.S. State	4	0	0	2	8
Total U.S. Residents	412	406	549	473	467

Source: Fall 2002-Fall 2005, Institutional Research Admission Census on October 15; Fall 2006, Institutional Research Annual Census on November 15 and Institutional Research Admission Census on October 15.

**B-10: Main Campus New Traditional-Age International Students by Geographic Region
Fall 2002 - Fall 2006**

Foreign Country	Fall 2002	Fall 2003	Fall 2004	Fall 2005	Fall 2006
Canada	0	0	0	0	1
China	0	0	0	0	1
Ecuador	1	0	2	1	0
France	1	2	1	2	0
Germany	1	1	0	0	0
Indonesia	0	0	0	0	0
Japan	3	0	1	2	1
Lebanon	1	0	0	0	0
Mexico	1	0	0	1	0
Philippines	0	0	0	0	1
Spain	1	1	1	1	0
Taiwan	0	0	0	0	2
United Kingdom	1	0	2	2	0
Unknown Foreign Country	3	2	0	0	0
Total Foreign Students	13	6	7	9	6

Source: International and Study Abroad Center.

**B-11: New Main Campus Traditional-Age Freshmen by Major
Fall 2002 - Fall 2006**

College Major	Fall 2002		Fall 2003		Fall 2004		Fall 2005		Fall 2006	
	Count	%	Count	%	Count	%	Count	%	Count	%
Arts & Sciences										
Anthropology	3	0.9%	0	0.0%	1	0.2%	2	0.6%	3	0.9%
Art/Art History	2	0.6%	4	1.3%	2	0.5%	3	0.9%	3	0.9%
Athletic Training	0	0.0%	2	0.7%	15	3.7%	11	3.1%	12	3.8%
Behavioral Science	1	0.3%	0	0.0%	2	0.5%	1	0.3%	0	0.0%
Biology	23	7.2%	17	5.6%	23	5.7%	24	6.8%	26	8.2%
Broadcasting	5	1.6%	4	1.3%	9	2.2%	7	2.0%	7	2.2%
Chemistry	6	1.9%	0	0.0%	3	0.7%	5	1.4%	8	2.5%
Communications	10	3.1%	17	5.6%	13	3.2%	18	5.1%	19	6.0%
Comparative Literature	1	0.3%	1	0.3%	0	0.0%	1	0.3%	0	0.0%
Computer Science & Engineering	11	3.5%	2	0.7%	8	2.0%	5	1.4%	9	2.8%
Criminology	11	3.5%	15	5.0%	22	5.5%	20	5.7%	20	6.3%
English	10	3.1%	6	2.0%	17	4.2%	5	1.4%	6	1.9%
Environmental Biology/Management	0	0.0%	0	0.0%	1	0.2%	0	0.0%	1	0.3%
German	0	0.0%	0	0.0%	1	0.2%	0	0.0%	0	0.0%
History	7	2.2%	2	0.7%	9	2.2%	6	1.7%	7	2.2%
International Business & Language	8	2.5%	1	0.3%	3	0.7%	2	0.6%	3	0.9%
International Studies	0	0.0%	0	0.0%	1	0.2%	0	0.0%	0	0.0%
Italian Studies	0	0.0%	2	0.7%	0	0.0%	0	0.0%	0	0.0%
Journalism	5	1.6%	10	3.3%	13	3.2%	10	2.8%	9	2.8%
Legal Studies*	3	0.9%	6	2.0%	16	4.0%	15	4.3%	2	0.6%
Liberal Arts	0	0.0%	3	1.0%	6	1.5%	4	1.1%	3	0.9%
Mathematics	4	1.3%	7	2.3%	5	1.2%	6	1.7%	3	0.9%
Movement & Sports Science	14	4.4%	9	3.0%	7	1.7%	10	2.8%	3	0.9%
Music	3	0.9%	2	0.7%	2	0.5%	0	0.0%	0	0.0%
Natural History	0	0.0%	0	0.0%	1	0.2%	0	0.0%	0	0.0%
Philosophy	2	0.6%	2	0.7%	0	0.0%	2	0.6%	0	0.0%
Physics	2	0.6%	1	0.3%	1	0.2%	0	0.0%	1	0.3%
Political Science	12	3.8%	9	3.0%	6	1.5%	11	3.1%	10	3.1%
Psychology	35	11.0%	23	7.6%	33	8.2%	28	8.0%	29	9.1%
Religion/Philosophy	0	0.0%	1	0.3%	0	0.0%	0	0.0%	2	0.6%
Social Science	1	0.3%	2	0.7%	2	0.5%	1	0.3%	0	0.0%
Sociology	3	0.9%	3	1.0%	4	1.0%	4	1.1%	3	0.9%
Spanish	0	0.0%	2	0.7%	0	0.0%	2	0.6%	0	0.0%
Speech Communication	0	0.0%	0	0.0%	1	0.2%	0	0.0%	1	0.3%
Theatre Arts	9	2.8%	7	2.3%	5	1.2%	9	2.6%	6	1.9%
	191	60.1%	160	52.8%	232	57.6%	212	60.2%	196	61.4%
Business & Public Management										
Accounting	9	2.8%	5	1.7%	4	1.0%	2	0.6%	4	1.3%
Business Administration/Management	30	9.4%	35	11.6%	24	6.0%	31	8.8%	52	16.3%
Economics	1	0.3%	3	1.0%	1	0.2%	0	0.0%	2	0.6%
E-Commerce	0	0.0%	0	0.0%	0	0.0%	1	0.3%	1	0.3%
Health Administration*	4	1.3%	3	1.0%	3	0.7%	0	0.0%	0	0.0%
Marketing	2	0.6%	5	1.7%	2	0.5%	3	0.9%	0	0.0%
Public Administration*	2	0.6%	2	0.7%	1	0.2%	2	0.6%	0	0.0%
	48	15.1%	53	17.5%	35	8.7%	39	11.1%	59	18.5%
Education & Organizational Leadership										
Child Development	5	1.6%	3	1.0%	4	1.0%	6	1.7%	1	0.3%
Liberal Studies	22	6.9%	17	5.6%	20	5.0%	20	5.7%	24	7.5%
	27	8.5%	20	6.6%	24	6.0%	26	7.4%	25	7.8%
College not Assigned										
Major not declared	52	16.4%	70	23.1%	112	27.8%	75	21.3%	39	12.2%
Grand Total All Students	318	100%	303	100%	403	100%	352	100%	319	100%

*Fall 2002: Legal Studies, Health Administration, and Public Administration were within the School of Public Affairs & Health Administration.

Source: Fall 2002-Fall 2005, Institutional Research Admission Census on October 15; Fall 2006, Institutional Research Annual Census on November 15.

**B-12: New Main Campus Traditional-Age Transfers by Major
Fall 2002 - Fall 2006**

College Major	Fall 2002		Fall 2003		Fall 2004		Fall 2005		Fall 2006	
	Count	%	Count	%	Count	%	Count	%	Count	%
Arts & Sciences										
Anthropology	0	0.0%	0	0.0%	1	0.7%	0	0.0%	0	0.0%
Art/Art History	2	1.9%	1	0.9%	0	0.0%	1	0.8%	2	1.4%
Athletic Training	0	0.0%	5	4.6%	1	0.7%	4	3.1%	1	0.7%
Behavioral Science	1	0.9%	2	1.8%	2	1.3%	1	0.8%	1	0.7%
Biology	5	4.7%	3	2.8%	3	2.0%	1	0.8%	10	6.8%
Broadcasting	2	1.9%	3	2.8%	3	2.0%	9	6.9%	2	1.4%
Chemistry	1	0.9%	0	0.0%	2	1.3%	0	0.0%	1	0.7%
Communications	2	1.9%	6	5.5%	13	8.6%	4	3.1%	9	6.1%
Comparative Literature	1	0.9%	0	0.0%	0	0.0%	0	0.0%	0	0.0%
Computer Science & Engineering	4	3.7%	5	4.6%	2	1.3%	0	0.0%	2	1.4%
Criminology	1	0.9%	7	6.4%	8	5.3%	6	4.6%	4	2.7%
English	2	1.9%	3	2.8%	2	1.3%	4	3.1%	1	0.7%
French	1	0.9%	0	0.0%	0	0.0%	0	0.0%	0	0.0%
History	3	2.8%	3	2.8%	7	4.6%	3	2.3%	5	3.4%
International Business & Language	4	3.7%	1	0.9%	0	0.0%	2	1.5%	0	0.0%
International Studies	1	0.9%	0	0.0%	0	0.0%	0	0.0%	2	1.4%
Journalism	1	0.9%	1	0.9%	2	1.3%	0	0.0%	2	1.4%
Legal Studies/Paralegal Studies*	1	0.9%	5	4.6%	2	1.3%	6	4.6%	5	3.4%
Liberal Arts	0	0.0%	2	1.8%	4	2.6%	4	3.1%	1	0.7%
Mathematics	2	1.9%	1	0.9%	1	0.7%	1	0.8%	2	1.4%
Movement & Sports Science	8	7.5%	4	3.7%	8	5.3%	3	2.3%	11	7.4%
Music	2	1.9%	1	0.9%	1	0.7%	0	0.0%	0	0.0%
Philosophy	1	0.9%	2	1.8%	1	0.7%	0	0.0%	1	0.7%
Physics	0	0.0%	0	0.0%	0	0.0%	0	0.0%	1	0.7%
Political Science	3	2.8%	3	2.8%	2	1.3%	4	3.1%	10	6.8%
Psychology	9	8.4%	9	8.3%	14	9.3%	11	8.5%	6	4.1%
Religion/Philosophy	0	0.0%	1	0.9%	0	0.0%	1	0.8%	2	1.4%
Social Science	0	0.0%	0	0.0%	0	0.0%	1	0.8%	1	0.7%
Sociology	0	0.0%	3	2.8%	4	2.6%	3	2.3%	5	3.4%
Spanish	0	0.0%	0	0.0%	1	0.7%	2	1.5%	0	0.0%
Speech Communication	0	0.0%	0	0.0%	1	0.7%	0	0.0%	1	0.0%
Theatre Arts	1	0.9%	0	0.0%	0	0.0%	3	2.3%	3	2.0%
	58	54.2%	71	65.1%	85	56.3%	74	56.9%	91	60.8%
Business & Public Management										
Accounting	3	2.8%	2	1.8%	2	1.3%	0	0.0%	3	2.0%
Business Admin./Mgmt.	9	8.4%	9	8.3%	19	12.6%	14	10.8%	32	21.6%
Economics	1	0.9%	0	0.0%	0	0.0%	0	0.0%	0	0.0%
E-Commerce	0	0.0%	0	0.0%	0	0.0%	0	0.0%	1	0.7%
Health Administration*	0	0.0%	0	0.0%	0	0.0%	0	0.0%	0	0.0%
Marketing	3	2.8%	0	0.0%	5	3.3%	5	3.8%	0	0.0%
Organizational Management*	1	0.9%	0	0.0%	0	0.0%	0	0.0%	1	0.7%
Public Administration*	0	0.0%	0	0.0%	0	0.0%	2	1.5%	0	0.0%
	17	15.9%	11	10.1%	26	17.2%	21	16.2%	37	25.0%
Education & Organizational Leadership										
Child Development	3	2.8%	4	3.7%	3	2.0%	4	3.1%	4	2.7%
Liberal Studies	13	12.1%	8	7.3%	10	6.6%	14	10.8%	10	6.8%
	16	15.0%	12	11.0%	13	8.6%	18	13.8%	14	9.5%
College not Assigned										
Major not declared	16	15.0%	15	13.8%	27	17.9%	17	13.1%	6	4.1%
Grand Total All Students	107	100%	109	100%	151	100%	130	100%	148	99%

* Fall 2002: Legal Studies, Health Administration, Organizational Management, and Public Administration were within the School of Public Affairs and Health Administration.

Source: Fall 2002-Fall 2005, Institutional Research Admission Census on October 15; Fall 2006, Institutional Research Annual Census on November 15.

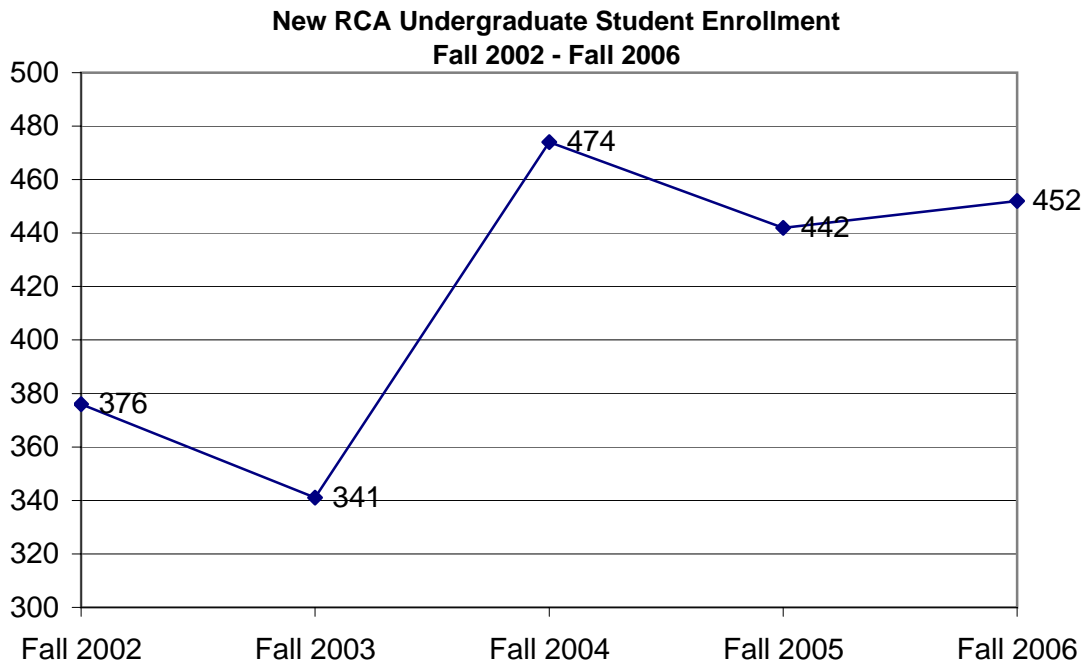
B-13: New RCA Undergraduate Enrollment by Gender and Ethnicity*
Fall 2002 - Fall 2006

New RCA Undergraduates by Gender

Gender	Fall 2002		Fall 2003		Fall 2004		Fall 2005		Fall 2006	
	Count	%	Count	%	Count	%	Count	%	Count	%
Female	259	68.9%	248	72.7%	357	75.3%	340	76.9%	340	75.2%
Male	105	27.9%	89	26.1%	103	21.7%	94	21.3%	112	24.8%
Not Reported	12	3.2%	4	1.2%	14	3.0%	8	1.8%	0	0.0%
Total	376	100.0%	341	100.0%	474	100.0%	442	100.0%	452	100.0%

New RCA Undergraduates by Ethnicity

Ethnicity	Fall 2002		Fall 2003		Fall 2004		Fall 2005		Fall 2006	
	Count	%	Count	%	Count	%	Count	%	Count	%
American Indian/ Alaskan Native	4	1.1%	4	1.2%	6	1.3%	6	1.4%	6	1.3%
African American	34	9.0%	37	10.9%	50	10.5%	48	10.9%	47	10.4%
Caucasian	154	41.0%	132	38.7%	166	35.0%	149	33.7%	130	28.8%
Latino/Hispanic	123	32.7%	107	31.4%	167	35.2%	152	34.4%	163	36.1%
Asian American/ Pacific Islander	20	5.3%	14	4.1%	12	2.5%	15	3.4%	18	4.0%
Other	18	4.8%	9	2.6%	14	3.0%	11	2.5%	19	4.2%
International		0.0%	1	0.0%		0.0%		0.0%		0.0%
Unknown	23	6.1%	37	10.9%	59	12.4%	61	13.8%	69	15.3%
Total	376	100%	341	100%	474	100%	442	100%	452	100%



* RCA (Regional Campus Administration) includes Distance Learning, CAPA, Central Coast Campus, Inland Empire Campus, High Desert Victorville Campus, Kern County Campus, Orange County Campus, Pt. Mugu Campus, San Fernando Campus, Ventura Campus, Vandenberg Campus, and Bakersfield Campus.

Source: Institutional Research Annual Census on November 15.

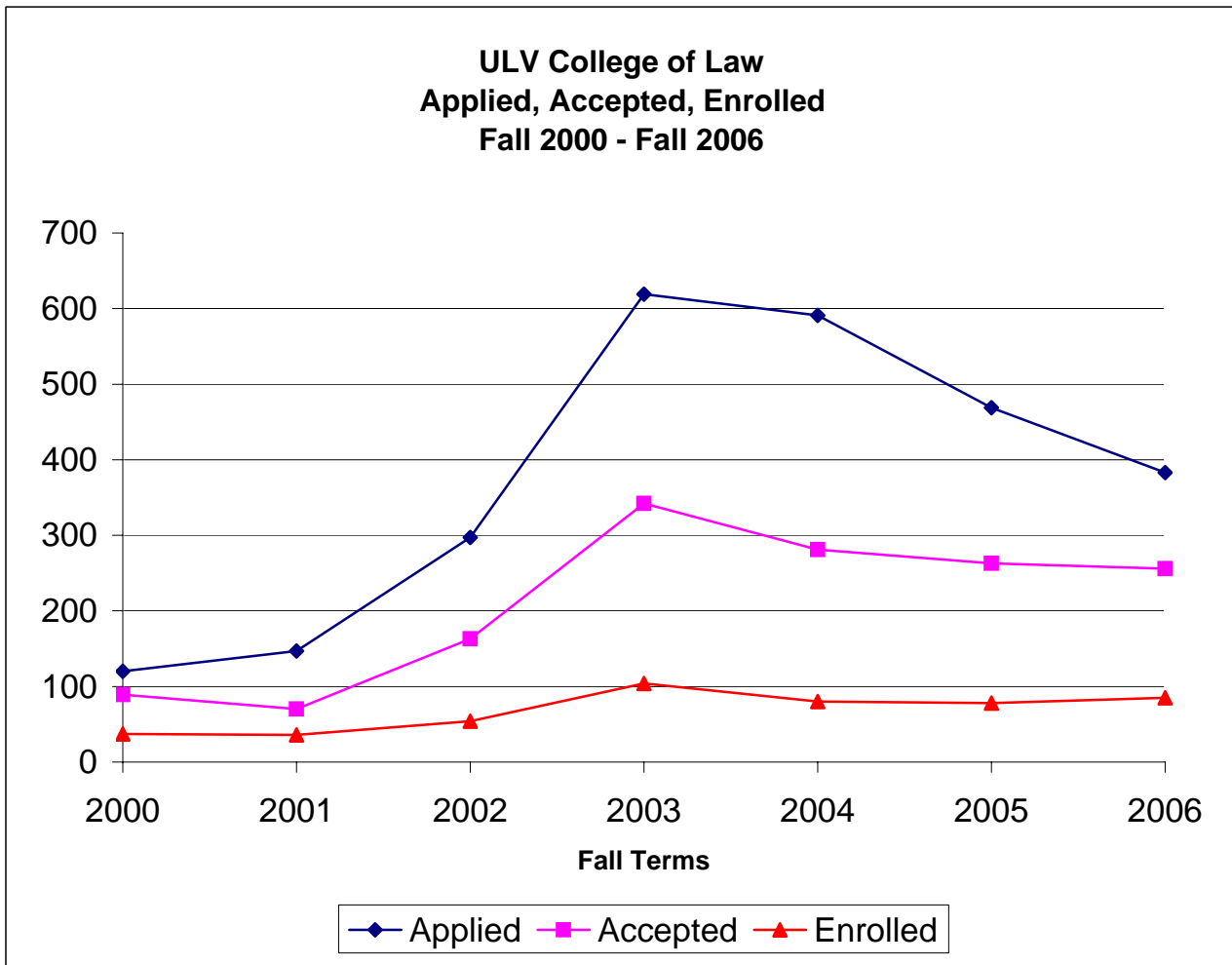
**B-14: New RCA Undergraduate Student Enrollment by Major
Fall 2002 - Fall 2006**

College Major	Fall 2002		Fall 2003		Fall 2004		Fall 2005		Fall 2006	
	Count	%	Count	%	Count	%	Count	%	Count	%
Arts & Sciences										
Anthropology	0	0.0%	1	0.3%	2	0.4%	0	0.0%	0	0.0%
Art	0	0.0%	2	0.6%	3	0.6%	1	0.2%	1	0.2%
Art History	0	0.0%	0	0.0%	1	0.2%	1	0.2%	0	0.0%
Behavioral Science	15	4.0%	4	1.2%	8	1.7%	1	0.2%	3	0.7%
Biology	0	0.0%	2	0.6%	2	0.4%	3	0.7%	3	0.7%
Broadcasting	0	0.0%	0	0.0%	1	0.2%	1	0.2%	0	0.0%
Chemistry	0	0.0%	0	0.0%	0	0.0%	0	0.0%	1	0.2%
Communications	0	0.0%	1	0.3%	0	0.0%	1	0.2%	2	0.4%
Comparative Literature	0	0.0%	0	0.0%	0	0.0%	0	0.0%	1	0.2%
Computer Science & Engineering	1	0.3%	4	1.2%	2	0.4%	1	0.2%	2	0.4%
Criminology	11	2.9%	5	1.5%	14	3.0%	4	0.9%	14	3.1%
English	4	1.1%	5	1.5%	9	1.9%	4	0.9%	3	0.7%
History	1	0.3%	3	0.9%	3	0.6%	0	0.0%	0	0.0%
Journalism	1	0.3%	2	0.6%	0	0.0%	0	0.0%	0	0.0%
Legal Studies*	11	2.9%	12	3.5%	16	3.4%	10	2.3%	17	3.8%
Mathematics	1	0.3%	4	1.2%	0	0.0%	0	0.0%	1	0.2%
Movement & Sports Science	3	0.8%	2	0.6%	2	0.4%	2	0.5%	3	0.7%
Music	0	0.0%	0	0.0%	0	0.0%	1	0.2%	0	0.0%
Political Science	1	0.0%	0	0.0%	6	1.3%	0	0.0%	1	0.0%
Psychology	14	3.7%	13	3.8%	12	2.5%	13	2.9%	18	4.0%
Social Science	3	0.8%	0	0.0%	1	0.2%	3	0.7%	0	0.0%
Sociology	5	1.3%	6	1.8%	11	2.3%	7	1.6%	7	1.5%
Spanish	0	0.0%	0	0.0%	0	0.0%	2	0.5%	1	0.2%
Speech Communication	0	0.0%	0	0.0%	0	0.0%	0	0.0%	1	0.2%
	71	18.6%	66	19.4%	93	19.6%	55	12.4%	79	17.3%
Business & Public Management										
Accounting	5	1.3%	6	1.8%	9	1.9%	6	1.4%	5	1.1%
Applied Management	0	0.0%	1	0.3%	0	0.0%	0	0.0%	0	0.0%
Business Admin./Mgmt.	83	22.1%	59	17.3%	88	18.6%	85	19.2%	83	18.4%
Economics	0	0.0%	0	0.0%	0	0.0%	0	0.0%	1	0.0%
E-Commerce	0	0.0%	0	0.0%	1	0.2%	1	0.2%	0	0.0%
Health Administration*	10	2.7%	5	1.5%	9	1.9%	6	1.4%	5	1.1%
Organizational Management*	82	21.8%	67	19.6%	67	14.1%	72	16.3%	63	13.9%
Public Administration*	10	2.7%	12	3.5%	14	3.0%	15	3.4%	16	3.5%
	190	50.5%	150	44.0%	188	39.7%	185	41.9%	173	38.1%
Education & Organizational Leadership										
Child Development	29	7.7%	86	25.2%	63	13.3%	96	21.7%	105	23.2%
Liberal Studies	86	22.9%	39	11.4%	129	27.2%	100	22.6%	92	20.4%
Multiple Subject	0	0.0%	0	0.0%	0	0.0%	4	0.9%	1	0.2%
Single Subject	0	0.0%	0	0.0%	0	0.0%	2	0.5%	1	0.2%
	115	30.6%	125	36.7%	192	40.5%	202	45.7%	199	44.0%
College not Assigned										
Major not declared	0	0.0%	0	0.0%	1	0.2%	0	0.0%	1	0.2%
Grand Total All Students	376	100%	341	100%	474	100%	442	100%	452	100%

*Fall 2002: Legal Studies, Health Administration, Organizational Management, and Public Administration were within the School of Public Affairs and Health Administration

Source: Institutional Research Annual Census on November 15.

B-15: Application, Acceptance, and Enrollment Statistics for the College of Law*



Fall	Applied	Acceptance		Enrolled	Yield Rate
		Accepted	Rate		
2000	120	89	74%	37	42%
2001	147	70	48%	36	51%
2002	297	163	55%	54	33%
2003	619	342	55%	104	30%
2004	591	281	48%	80	28%
2005	469	263	56%	78	30%
2006	383	256	67%	85	33%

* Does not include students at the former San Fernando Valley Campus.

Source: Admissions Office, ULV College of Law; Institutional Research Annual Census on November 15; Institutional Research Admission Census on October 15..

**B-16: New Main Campus Masters Students by Major/Credential
Fall 2002 - Fall 2006**

Major	Fall 2002		Fall 2003		Fall 2004		Fall 2005		Fall 2006	
College of Arts & Sciences										
Counseling (Concentration/Special Emphasis)	15	3.8%	5	1.1%	10	2.5%	4	1.1%	9	2.8%
Marriage & Family Therapy (MFT)	14	3.6%	11	2.4%	27	6.7%	25	6.6%	15	4.7%
	29	7.4%	16	3.6%	37	9.1%	29	7.7%	24	7.5%
College of Business & Public Management										
Business Administration	74	18.9%	84	18.7%	73	18.0%	86	22.7%	95	29.5%
Business Organizational Management	4	1.0%	1	0.2%	0	0.0%	0	0.0%	1	0.3%
Gerontology	6	1.5%	13	2.9%	9	2.2%	5	1.3%	5	1.6%
Health Services Administration	11	2.8%	7	1.6%	7	1.7%	5	1.3%	8	2.5%
Leadership & Management	17	4.3%	19	4.2%	11	2.7%	16	4.2%	11	3.4%
Public Administration	14	3.6%	14	3.1%	12	3.0%	14	3.7%	15	4.7%
	126	32.2%	138	30.7%	112	27.7%	126	33.2%	135	41.9%
College of Education & Organizational Leadership										
Child Development	3	0.8%	4	0.9%	4	1.0%	12	3.2%	8	2.5%
Child Life	4	1.0%	8	1.8%	8	2.0%	12	3.2%	10	3.1%
Educational Management	5	1.3%	3	0.7%	7	1.7%	5	1.3%	4	1.2%
Multiple Subject (Credential)	85	21.7%	103	22.9%	44	10.9%	61	16.1%	32	9.9%
Preliminary Administrative Services (Credential)	3	0.8%	2	0.4%	6	1.5%	1	0.3%	2	0.6%
Pupil Personnel Services (Credential)	3	0.8%	0	0.0%	0	0.0%	1	0.3%	0	0.0%
Reading	6	1.5%	6	1.3%	7	1.7%	8	2.1%	6	1.9%
School/Educational Counseling	16	4.1%	26	5.8%	20	4.9%	18	4.7%	26	8.1%
Single Subject (Credential)	31	7.9%	68	15.1%	37	9.1%	36	9.5%	31	9.6%
Special Education	3	0.8%	21	4.7%	6	1.5%	2	0.5%	3	0.9%
Special Emphasis	77	19.7%	54	12.0%	117	28.9%	68	17.9%	41	12.7%
	236	60.4%	295	65.7%	256	63.2%	224	59.1%	163	50.6%
Major not Declared	0	0.0%	0	0.0%	0	0.0%	0	0.0%	0	0.0%
Total Masters Majors	391	100%	449	100%	405	100%	379	100%	322	100%

**B- 17: New Doctoral Students by Major/Credential at All ULV Campuses
Fall 2002 - Fall 2006**

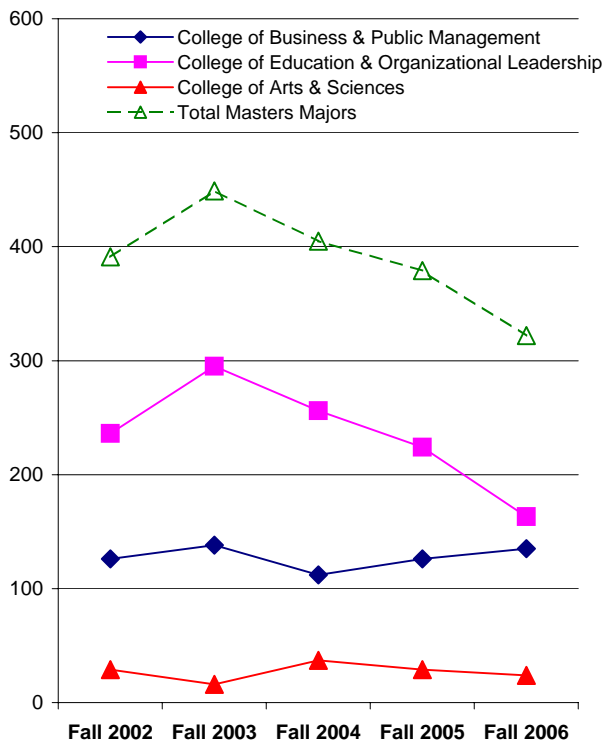
Major	Fall 2002		Fall 2003		Fall 2004		Fall 2005		Fall 2006	
Clinical-Community Psychology (PsyD)	11	12.6%	9	14.5%	18	21.2%	18	25.7%	13	22.0%
Educational/Organizational Leadership/Management (EdD)	50	57.5%	33	53.2%	48	56.5%	32	45.7%	23	39.0%
Professional Administrative Services (Credential)	10	11.5%	3	4.8%	0	0.0%	0	0.0%	2	3.4%
Public Administration (DPA)	16	18.4%	17	27.4%	17	20.0%	20	28.6%	21	35.6%
	87	100.0%	62	100.0%	83	97.6%	70	100.0%	59	100.0%
Major not Declared	0	0.0%	0	0.0%	2	2.4%	0	0.0%	0	0.0%
Total Doctoral Majors	87	100%	62	100%	85	100%	70	100%	59	100%

Source: Institutional Research Annual Census on November 15.

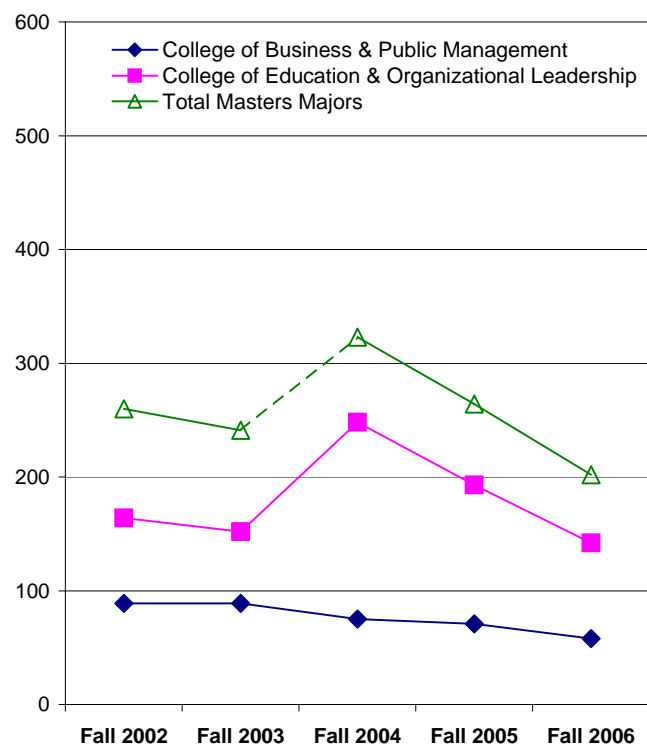
**B-18: New RCA Masters Students by Major/Credential
Fall 2002 - Fall 2006**

Major	Fall 2002		Fall 2003		Fall 2004		Fall 2005		Fall 2006	
College of Arts & Sciences										
Counseling (Concentration/Special Emphasis)*	7	2.7%	0	0.0%	0	0.0%	0	0.0%	0	0.0%
	7	2.7%	0	0.0%	0	0.0%	0	0.0%	0	0.0%
College of Business & Public Management										
Business Administration	59	22.7%	84	34.9%	62	19.2%	63	23.9%	49	24.3%
Business Organizational Management	14	5.4%	5	2.1%	8	2.5%	5	1.9%	6	3.0%
Health Services Administration	3	1.2%	0	0.0%	0	0.0%	0	0.0%	0	0.0%
Leadership & Management	13	5.0%	0	0.0%	4	1.2%	1	0.4%	0	0.0%
Public Administration	0	0.0%	0	0.0%	1	0.3%	2	0.8%	3	1.5%
	89	34.2%	89	36.9%	75	23.2%	71	26.9%	58	28.7%
College of Education & Organizational Leadership										
Child Development	0	0.0%	5	2.1%	11	3.4%	22	8.3%	0	0.0%
Educational Management	43	16.5%	23	9.5%	39	12.1%	29	11.0%	20	9.9%
Multiple Subject (Credential)	36	13.8%	36	14.9%	22	6.8%	24	9.1%	27	13.4%
Preliminary Administrative Services (Credential)	4	1.5%	8	3.3%	13	4.0%	2	0.8%	2	1.0%
Reading	10	3.8%	0	0.0%	11	3.4%	2	0.8%	0	0.0%
School/Educational Counseling	38	14.6%	43	17.8%	60	18.6%	54	20.5%	53	26.2%
Single Subject (Credential)	23	8.8%	18	7.5%	27	8.4%	16	6.1%	8	4.0%
Special Education	0	0.0%	0	0.0%	1	0.3%	4	1.5%	3	1.5%
Special Emphasis	2	0.8%	18	7.5%	39	12.1%	39	14.8%	29	14.4%
Special Emphasis: Advanced Teaching Methods	8	3.1%	1	0.4%	25	7.7%	1	0.4%	0	0.0%
	164	63.1%	152	63.1%	248	76.8%	193	73.1%	142	70.3%
Major not Declared	0	0.0%	0	0.0%	0	0.0%	0	0.0%	2	1.0%
Total Masters Majors	260	100%	241	100%	323	100%	264	100%	202	100%

**New Main Campus Master Level Students
Fall 2002 - Fall 2006**



**New RCA Master Level Students
Fall 2002 - Fall 2006**



* The major in RCA was discontinued after 2002.

Source: Institutional Research Annual Census on November 15.

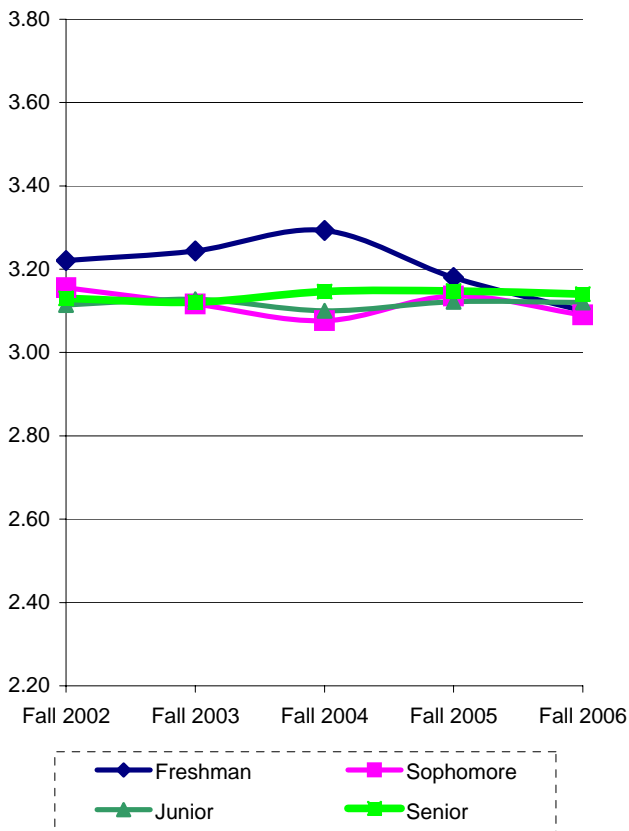
C. PERFORMANCE INDICATORS

All statistics are based on data from ULV's census on November 15 for each year specified, unless otherwise noted.

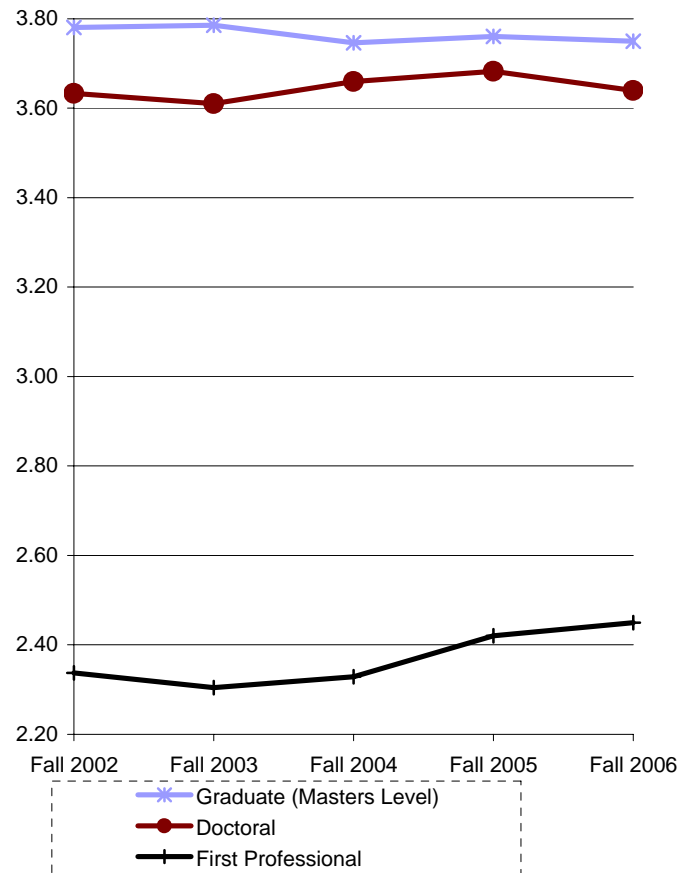
**C-1: Student Cumulative GPA by Level
Fall 2002 - Fall 2006**

Student Level	Fall 2002		Fall 2003		Fall 2004		Fall 2005		Fall 2006	
	Median	Mean	Median	Mean	Median	Mean	Median	Mean	Median	Mean
Freshman	3.30	3.22	3.40	3.24	3.43	3.29	3.30	3.18	3.22	3.10
Sophomore	3.20	3.16	3.11	3.12	3.10	3.08	3.20	3.14	3.09	3.09
Junior	3.10	3.11	3.14	3.13	3.09	3.10	3.14	3.12	3.14	3.12
Senior	3.13	3.13	3.12	3.12	3.15	3.15	3.15	3.15	3.14	3.14
Graduate (Masters Level)	3.87	3.78	3.88	3.79	3.86	3.75	3.86	3.76	3.85	3.75
Doctoral	3.71	3.63	3.66	3.61	3.72	3.66	3.74	3.68	3.71	3.64
First Professional	2.30	2.34	2.27	2.30	2.29	2.33	2.35	2.42	2.41	2.45
ULV Overall	3.53	3.41	3.48	3.38	3.43	3.35	3.43	3.36	3.42	3.35

**Means of Undergraduate Student GPA
Fall 2002-Fall 2006**



**Means of Graduate Student GPA
Fall 2002-Fall 2006**



Source: Institutional Research Annual Census on November 15.

C-2: Retention Rates* for Main Campus First-Time Full-Time Traditional-Age Entering Freshmen
Fall 1995 - Fall 2005**

Entering Fall Term	FT Count	Students Continuing at ULV											
		After 1 Year	After 2 Years	After 3 Years	After 4 Years	After 5 Years	After 6 Years	After 7 Years	After 8 Years	After 9 Years	After 10 Years	After 11 Years	After 12 Years
1995	184	139	76%	113	61%	100	54%	28	15%	10	5%	4	2%
1996	196	153	78%	126	64%	122	62%	35	18%	10	5%	5	3%
1997	202	167	83%	149	74%	135	67%	44	22%	9	4%	7	3%
1998	321	267	83%	217	68%	195	61%	59	18%	12	4%	12	4%
1999	320	255	80%	228	71%	215	67%	50	16%	10	3%	3	1%
2000	285	236	83%	211	74%	202	71%	71	25%	14	5%	4	1%
2001	305	257	84%	234	77%	223	73%	63	21%	16	5%		
2002	294	258	88%	227	77%	227	77%	60	20%				
2003	289	253	88%	228	79%	219	76%						
2004	375	333	89%	300	80%								
2005	332	267	80%										
2006	314												

C-3: Graduation Rates* for Main Campus First-Time Full-Time Traditional-Age Entering Freshmen****
Fall 1995 - Fall 2002**

Entering Fall Term	Head Count	Students Graduating from ULV							
		Within 4 Years	Within 5 Years	Within 6 Years	Within 7 Years	Within 8 Years	Within 9 Years	Within 10 Years	Within 11 Years
1995	184	76	41%	78	42%	85	46%	91	49%
1996	196	60	31%	87	44%	92	47%	103	53%
1997	202	62	31%	97	48%	102	50%	112	55%
1998	321	106	33%	147	46%	157	49%	166	52%
1999	320	123	38%	159	50%	168	53%	173	54%
2000	285	93	33%	134	47%	144	51%		
2001	305	126	41%	167	55%				
2002	294	124	42%						
2003	289								

* It is referred to the number and percent of students in a cohort who stayed. The first fall-to-fall (first-year) retention rates are often used in speeches and publications regarding retention.

** This first-time, full-time, degree-seeking first-year students (freshmen) cohort is often referred as GRS (Graduation Rates) Cohort in research on retention rates and graduation rates.

*** It is referred to the number and percent of students in a cohort who graduated. The graduation dates for an specific year are between July 1 and June 31.

**** The numbers and percentages in this column are cumulative, which include everyone who has ever graduated of that cohort.

***** A correction is made in this edition to include all students whose graduation dates are between September 1 and August 31, instead of between July 1 and June 31, as the previous editions show.

Source: Institutional Research Annual Census on November 15.

**C-4: The First Fall-to-Fall (First-Year) Retention Rates for Main Campus First-Time Full-Time Traditional-Age Fres
Fall 1995 - Fall 2005**

Cohort	Caucasian			African-American			Hispanic/ Latino			Asian/Pacific Islander			Other			Ethnicity Unknown		
	1st Fall	2nd Fall	Rate	1st Fall	2nd Fall	Rate	1st Fall	2nd Fall	Rate	1st Fall	2nd Fall	Rate	1st Fall	2nd Fall	Rate	1st Fall	2nd Fall	Rate
1995	77	54	70%	20	16	80%	61	50	82%	23	17	74%	3	2	67%	0	0	-
1996	75	62	83%	19	15	79%	81	63	78%	15	8	53%	5	4	80%	1	1	100%
1997	86	72	84%	20	15	75%	62	52	84%	12	10	83%	17	16	94%	5	2	40%
1998	125	98	78%	26	23	88%	118	106	90%	22	16	73%	26	21	81%	4	3	75%
1999	114	86	75%	31	28	90%	112	96	86%	28	20	71%	20	12	60%	15	13	87%
2000	117	90	77%	32	29	91%	88	78	89%	22	16	73%	6	4	67%	20	19	95%
2001	105	83	79%	19	17	89%	125	108	86%	20	19	95%	8	4	50%	28	26	93%
2002	92	81	88%	24	22	92%	117	106	91%	14	12	86%	5	2	40%	41	34	83%
2003	106	91	86%	23	21	91%	119	104	87%	15	15	100%	15	14	93%	11	8	73%
2004	129	118	91%	31	25	81%	152	133	88%	12	11	92%	26	23	88%	25	23	92%
2005	98	79	81%	31	21	68%	130	108	83%	15	12	80%	25	19	76%	33	28	85%

* The first fall-to-fall (first-year) retention rate calculates the percentage of students who stay in the second Fall after they entered ULV in a given Fall term.
Source: Institutional Research Annual Census on November 15.

**C-5: Graduation Rates (Within 6 Years) for Main Campus First-Time Full-Time Traditional-Age Freshmen by Ethn
Fall 1995 - Fall 2002**

Cohort	Caucasian			African-American			Hispanic/ Latino			Asian/Pacific Islander			Other			Ethnicity Unknown		
	Total	Graduated	Rate	Total	Graduated	Rate	Total	Graduated	Rate	Total	Graduated	Rate	Total	Graduated	Rate	Total	Graduated	Rate
1995	77	30	39%	20	7	35%	61	34	56%	23	12	52%	3	2	67%	0	0	-
1996	75	39	52%	19	5	26%	81	40	49%	15	4	27%	5	2	40%	1	1	100%
1997	86	49	57%	20	9	45%	62	29	47%	12	4	33%	17	9	53%	5	2	40%
1998	125	56	45%	26	15	58%	118	65	55%	22	6	27%	26	13	50%	4	2	50%
1999	114	62	54%	31	16	52%	112	65	58%	28	10	36%	20	6	30%	15	9	60%
2000	117	59	50%	32	18	56%	88	46	52%	22	9	41%	6	1	17%	20	11	55%
2001*	105	57	54%	19	11	58%	125	67	54%	20	10	50%	8	3	38%	28	19	68%
2002**	92	40	43%	24	9	38%	117	50	43%	14	6	43%	5	0	0%	41	19	46%

* Graduation Rates are within 5 years for the cohort.

** Graduation Rates are within 4 years for the cohort.

Source: Institutional Research Annual Census on November 15.

**C-6: Retention Rates for Main Campus Full-Time Undergraduate Transfer Students*
Fall 1995 - Fall 2006**

Fall Term	FT Count	Students Continuing at ULV											
		After 1 Year		After 2 Years		After 3 Years		After 4 Years		After 5 Years		After 6 Years	
1995	124	89	72%	46	37%	19	15%	5	4%	1	1%	1	1%
1996	136	90	66%	43	32%	21	15%	7	5%	0	0%	2	1%
1997	114	78	68%	41	36%	12	11%	5	4%	0	0%	0	0%
1998	136	103	76%	56	41%	15	11%	3	2%	1	1%	0	0%
1999	117	96	82%	48	41%	25	21%	7	6%	1	1%	1	1%
2000	129	95	74%	42	33%	12	9%	5	4%	3	2%	1	1%
2001	108	88	81%	39	36%	9	8%	2	2%	1	1%		
2002	110	83	75%	48	44%	13	12%	2	2%				
2003	105	89	85%	43	41%	10	10%						
2004	160	130	81%	65	41%								
2005	127	110	87%										
2006	136												

Source: Institutional Research Annual Census on November 15.

**C-7: Graduation Rates for Main Campus Full-Time Undergraduate Transfer Students*
Fall 1995 - Fall 2004**

Fall Term	Head Count	Students Graduating from ULV							
		Within 2 Years		Within 3 Years		Within 4 Years		Within 5 or More Years**	
1995	124	24	19%	43	35%	60	48%	65	52%
1996	136	23	17%	42	31%	52	38%	63	46%
1997	114	23	20%	47	41%	57	50%	65	57%
1998	136	31	23%	59	43%	71	52%	76	56%
1999	117	26	22%	49	42%	59	50%	68	58%
2000	129	33	26%	57	44%	66	51%	77	60%
2001	108	29	27%	57	53%	63	58%	67	62%
2002	110	22	20%	52	47%	59	54%		
2003	105	31	30%	59	56%				
2004	160	52	33%						
2005	127								

* Does not include CAPA.

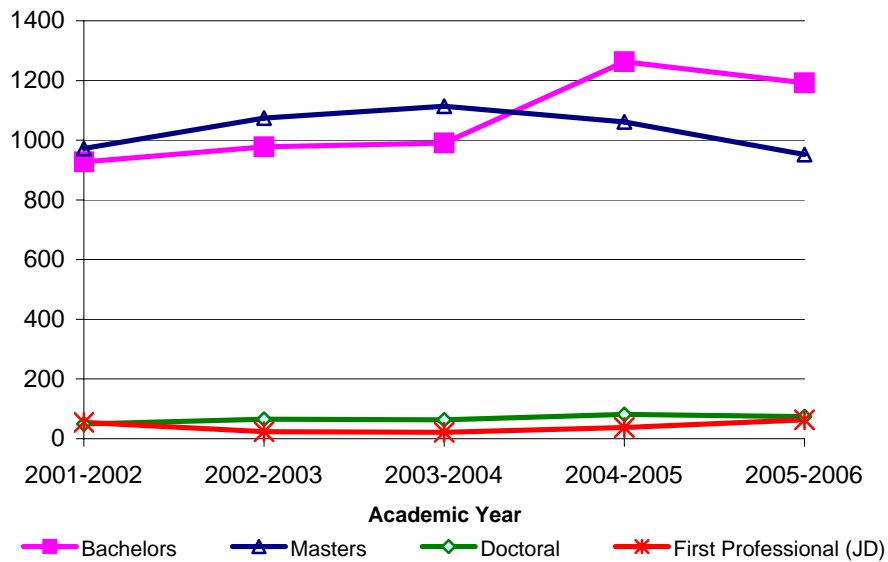
** The numbers and percentages in this column are cumulative, which include everyone who has ever graduated of that cohort.

Source: Institutional Research Annual Census on November 15.

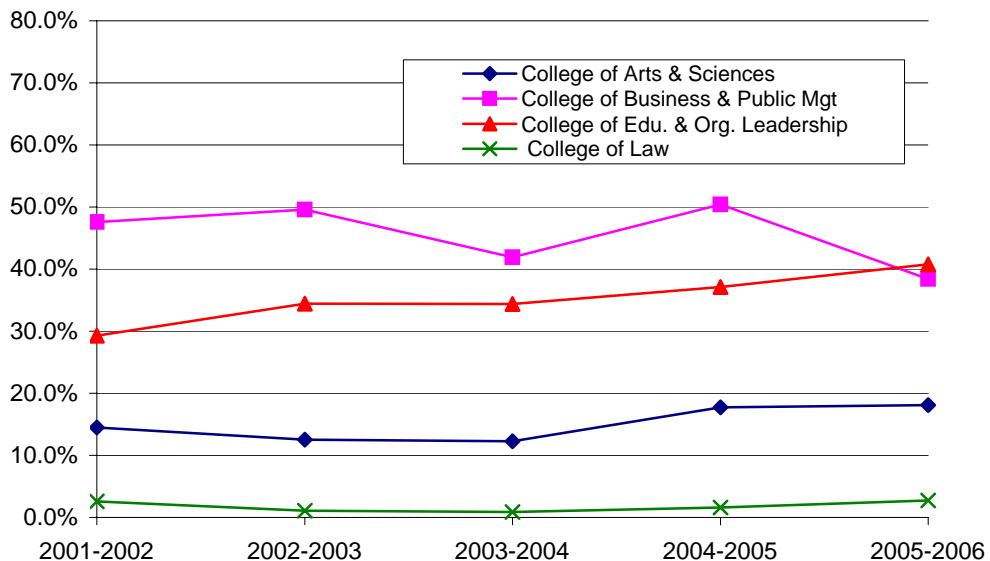
**C-8: Degrees Awarded by ULV between July 1 and June 30
2002 - 2006**

Degree Awarded	2001-2002		2002-2003		2003-2004		2004-2005		2005-2006	
Associate	2	0.1%	3	0.1%	3	0.1%	2	0.1%	1	0.0%
Bachelors	927	46.2%	978	45.6%	990	45.2%	1263	51.7%	1192	52.2%
Masters	972	48.5%	1074	50.1%	1114	50.8%	1061	43.4%	952	41.7%
Doctoral	49	2.4%	65	3.0%	63	2.9%	81	3.3%	74	3.2%
First Professional (JD)	55	2.7%	24	1.1%	21	1.0%	37	1.5%	63	2.8%
Total	2005	100%	2144	100%	2191	100%	2444	100%	2282	100%

**Degrees Awarded by ULV
2002-2006**



**Percentage of Total Degrees Awarded by Colleges
2002-2006**



Source: Institutional Research Annual Census on November 15.

**C-9: Bachelors Degrees Conferred to ULV Students
2002 - 2006**

Major	2001-2002		2002-2003		2003-2004		2004-2005		2005-2006	
College of Arts & Sciences										
Athletic Training	1	0.1%	1	0.1%	3	0.3%	3	0.2%	7	0.6%
Anthropology	5	0.5%	1	0.1%	1	0.1%	2	0.2%	3	0.3%
Art	7	0.8%	4	0.4%	8	0.8%	8	0.6%	6	0.5%
Art History	0	0.0%	1	0.1%	0	0.0%	0	0.0%	1	0.1%
Behavioral Science	17	1.8%	10	1.0%	11	1.1%	20	1.6%	19	1.6%
Biology	10	1.1%	8	0.8%	10	1.0%	5	0.4%	8	0.7%
Broadcasting	11	1.2%	12	1.2%	12	1.2%	16	1.3%	9	0.8%
Chemistry	2	0.2%	3	0.3%	2	0.2%	2	0.2%	3	0.3%
Communications	5	0.5%	9	0.9%	14	1.4%	13	1.0%	16	1.3%
Computer Science & Engineering	12	1.3%	11	1.1%	19	1.9%	23	1.8%	14	1.2%
Criminology	20	2.2%	32	3.3%	17	1.7%	41	3.2%	38	3.2%
English	23	2.5%	15	1.5%	13	1.3%	19	1.5%	18	1.5%
Environmental Biology	0	0.0%	1	0.1%	1	0.1%	0	0.0%	0	0.0%
Environmental Management	0	0.0%	0	0.0%	0	0.0%	1	0.1%	0	0.0%
History	8	0.9%	10	1.0%	2	0.2%	7	0.6%	6	0.5%
International Business & Language	3	0.3%	2	0.2%	7	0.7%	4	0.3%	3	0.3%
International Studies	1	0.1%	2	0.2%	0	0.0%	0	0.0%	2	0.2%
Journalism	9	1.0%	13	1.3%	4	0.4%	6	0.5%	14	1.2%
Legal/Paralegal Studies*	7	0.8%	12	1.2%	12	1.2%	12	1.0%	19	1.6%
Liberal Arts	0	0.0%	1	0.1%	1	0.1%	1	0.1%	6	0.5%
Mathematics	5	0.5%	2	0.2%	3	0.3%	4	0.3%	1	0.1%
Movement & Sports Science/Phys Ed	22	2.4%	14	1.4%	17	1.7%	24	1.9%	20	1.7%
Music	3	0.3%	1	0.1%	2	0.2%	4	0.3%	7	0.6%
Natural Science	1	0.1%	0	0.0%	0	0.0%	1	0.1%	0	0.0%
Philosophy	2	0.2%	0	0.0%	0	0.0%	2	0.2%	2	0.2%
Physics	1	0.1%	1	0.1%	2	0.2%	0	0.0%	0	0.0%
Political Science	9	1.0%	9	0.9%	10	1.0%	27	2.1%	16	1.3%
Psychology	75	8.1%	40	4.1%	50	5.1%	77	6.1%	77	6.5%
Religion	1	0.1%	2	0.2%	3	0.3%	2	0.2%	3	0.3%
Religion & Philosophy	5	0.5%	1	0.1%	1	0.1%	3	0.2%	1	0.1%
Social Science	4	0.4%	10	1.0%	8	0.8%	7	0.6%	3	0.3%
Sociology	13	1.4%	13	1.3%	11	1.1%	9	0.7%	30	2.5%
Spanish	2	0.2%	1	0.1%	2	0.2%	2	0.2%	2	0.2%
Speech Communication	0	0.0%	1	0.1%	5	0.5%	5	0.4%	5	0.4%
Theatre Arts	2	0.2%	0	0.0%	1	0.1%	1	0.1%	2	0.2%
Student Designed Majors	1	0.1%	1	0.1%	0	0.0%	0	0.0%	2	0.2%
	287	31.0%	244	24.9%	252	25.5%	351	27.8%	363	30.5%
College of Business & Public Management										
Accounting	18	1.9%	24	2.5%	13	1.3%	18	1.4%	22	1.8%
Business Administration	298	32.1%	297	30.4%	271	27.4%	337	26.7%	251	21.1%
Business Management	6	0.6%	1	0.1%	0	0.0%	1	0.1%	0	0.0%
E-Commerce	0	0.0%	0	0.0%	0	0.0%	0	0.0%	2	0.2%
Economics	7	0.8%	6	0.6%	6	0.6%	11	0.9%	6	0.5%
Health Administration	43	4.6%	33	3.4%	26	2.6%	32	2.5%	33	2.8%
Marketing	9	1.0%	13	1.3%	6	0.6%	17	1.3%	4	0.3%
Organizational Management*	141	15.2%	176	18.0%	180	18.2%	210	16.6%	163	13.7%
Public Administration*	24	2.6%	30	3.1%	25	2.5%	25	2.0%	31	2.6%
Student Designed Majors	0	0.0%	0	0.0%	0	0.0%	0	0.0%	1	0.1%
	546	58.9%	580	59.3%	527	53.2%	651	51.5%	513	43.0%
College of Education & Organizational Leadership										
Child Development	14	1.5%	32	3.3%	42	4.2%	101	8.0%	105	8.8%
Child Development/Life	0	0.0%	1	0.1%	0	0.0%	0	0.0%	0	0.0%
Liberal Studies	80	8.6%	121	12.4%	169	17.1%	160	12.7%	211	17.7%
	94	10.1%	154	15.7%	211	21.3%	261	20.7%	316	26.5%
Total Bachelors Degrees Conferred	927	100%	978	100%	990	100%	1263	100%	1192	100%

*Fall 2002: Legal Studies, Paralegal Studies, Health Services Management, Healthcare Management, Organizational Management, and Public Administration were within the School of Public Affairs & Health Administration.

Source: Institutional Research Annual Census on November 15.

**C-10: Masters Degrees Awarded by ULV
2002- 2006**

Major	2001-2002		2002-2003		2003-2004		2004-2005		2005-2006	
College of Arts & Sciences										
Counseling	3	0.3%	15	1.4%	24	2.2%	18	1.7%	16	1.7%
Counseling/Marriage & Family Therapy (MFT)	9	0.9%	4	0.4%	15	1.3%	17	1.6%	14	1.5%
Counseling (Special Emphasis)	3	0.3%	4	0.4%	1	0.1%	3	0.3%	4	0.4%
Psychology	7	0.7%	6	0.6%	1	0.1%	9	0.8%	1	0.1%
	22	2.3%	29	2.7%	41	3.7%	47	4.4%	35	3.7%
College of Business & Public Management										
Business Administration	344	35.4%	369	34.4%	365	32.8%	367	34.6%	266	27.8%
Business Information Technology	0	0.0%	2	0.2%	7	0.6%	11	1.0%	3	0.3%
Business Organizational Management	62	6.4%	67	6.2%	62	5.6%	41	3.9%	9	0.9%
Gerontology	6	0.6%	12	1.1%	8	0.7%	8	0.8%	12	1.3%
Health Administration	1	0.1%	8	0.7%	1	0.1%	1	0.1%	0	0.0%
Health Services Administration	18	1.9%	22	2.0%	22	2.0%	24	2.3%	18	1.9%
International Administration	4	0.4%	1	0.1%	0	0.0%	0	0.0%	0	0.0%
Leadership & Management	28	2.9%	25	2.3%	41	3.7%	25	2.4%	28	2.9%
Public Administration	20	2.1%	11	1.0%	15	1.3%	19	1.8%	15	1.6%
	483	49.7%	517	48.1%	521	46.8%	496	46.7%	351	36.7%
College of Education & Organizational Leadership										
Child Development	5	0.5%	4	0.4%	14	1.3%	3	0.3%	22	2.3%
Child Development/Life	3	0.3%	1	0.1%	4	0.4%	0	0.0%	0	0.0%
Child Life	1	0.1%	6	0.6%	0	0.0%	6	0.6%	11	1.2%
Educational Management	94	9.7%	96	8.9%	98	8.8%	93	8.8%	98	10.3%
Reading	48	4.9%	14	1.3%	13	1.2%	25	2.4%	21	2.2%
School/Educational Counseling	157	16.2%	209	19.5%	197	17.7%	144	13.6%	153	16.0%
Special Emphasis	133	13.7%	175	16.3%	193	17.3%	240	22.6%	210	22.0%
Special Emphasis: Adv. Teaching Methods	25	2.6%	22	2.0%	32	2.9%	7	0.7%	55	5.8%
Student Designed Majors	1	0.1%	1	0.1%	1	0.1%	0	0.0%	0	0.0%
	467	48.0%	528	49.2%	552	49.6%	518	48.8%	570	59.6%
Total Masters Degrees Conferred	972	100%	1074	100%	1114	100%	1061	100%	956	100%

**C-11: Doctoral Degrees Conferred by ULV
2002 - 2006**

Major	2001-2002		2002-2003		2003-2004		2004-2005		2005-2006	
Clinical-Community Psychology (PsyD)	0	0.0%	1	1.8%	6	10.3%	7	8.6%	15	20.3%
Educational/Organizational Leadership/Management (EdD)	35	71.4%	45	78.9%	36	62.1%	60	74.1%	46	62.2%
Public Administration (DPA)	14	28.6%	11	19.3%	16	27.6%	14	17.3%	13	17.6%
Total Doctoral Degrees Conferred	49	100%	57	100%	58	100%	81	100%	74	100%

**C-12: First Professional Degrees Conferred by ULV
2001 - 2005**

Major	2001-2002		2002-2003		2003-2004		2004-2005		2005-2006	
Juris Doctor (JD)	55	100%	24	100%	21	100%	37	100%	63	100%
Total Professional Degrees Conferred	55	100%	24	100%	21	100%	37	100%	63	100%

*Fall 2002: Gerontology, Health Administration, Health Services Administration, and Public Administration were within the School of Public Affairs & Health Administration
Source: Institutional Research Annual Census on November 15.

D. FACULTY AND STAFF

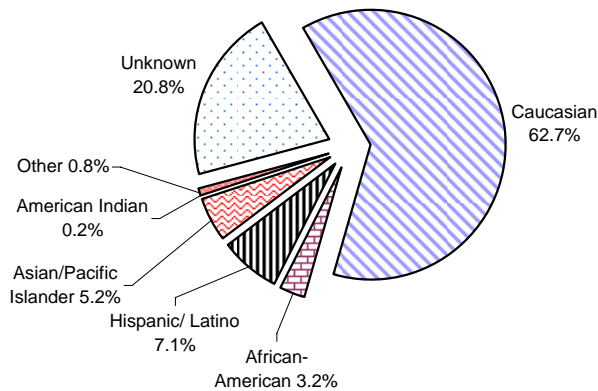
All statistics are based on data from ULV's census on November 15 for each year specified, unless otherwise noted.

D-1: Gender and Ethnicity of ULV Faculty by Full-Time and Part-Time Status Fall 2006

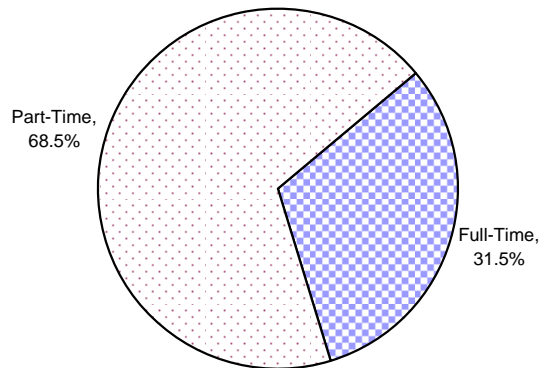
Ethnicity

Faculty	Caucasian		African-American		Hispanic/Latino		Asian/Pacific Islander		American Indian		Other		Ethnicity Unknown		Total	
Full-Time																
Male	81	53.6%	3	50.0%	5	55.6%	9	52.9%	0	0.0%	0	0.0%	4	0.0%	102	52.6%
Female	70	46.4%	3	50.0%	4	44.4%	8	47.1%	0	0.0%	0	0.0%	7	0.0%	92	47.4%
Total	151	100.0%	6	100.0%	9	100.0%	17	100.0%	0	0.0%	0	0.0%	11	0.0%	194	100.0%
Part-Time																
Male	124	52.8%	9	64.3%	15	42.9%	7	46.7%	0	0.0%	2	40.0%	52	44.4%	209	49.5%
Female	111	47.2%	5	35.7%	20	57.1%	8	53.3%	1	100.0%	3	60.0%	63	53.8%	211	50.0%
Unknown	0	0.0%	0	0.0%	0	0.0%	0	0.0%	0	0.0%	0	0.0%	2	1.7%	2	0.5%
Total	235	100.0%	14	100.0%	35	100.0%	15	100.0%	1	100.0%	5	100.0%	117	100.0%	422	100.0%
All U.S. Faculty																
Male	205	53.1%	12	60.0%	20	45.5%	16	50.0%	0	0.0%	2	40.0%	56	43.8%	311	50.5%
Female	181	46.9%	8	40.0%	24	54.5%	16	50.0%	1	100.0%	3	60.0%	70	54.7%	303	49.2%
Unknown	0	0.0%	0	0.0%	0	0.0%	0	0.0%	0	0.0%	0	0.0%	2	1.6%	2	0.3%
Total	386	100.0%	20	100.0%	44	100.0%	32	100.0%	1	100.0%	5	100.0%	128	100.0%	616	100.0%

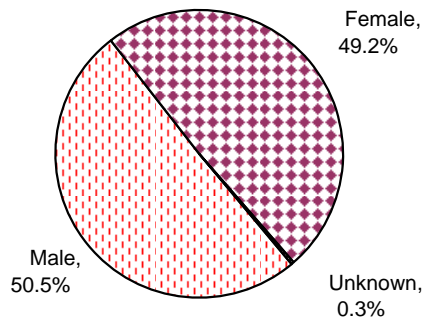
Ethnicity of All ULV Faculty - Fall 2006



Teaching Status of All ULV Faculty - Fall 2006



Gender of ULV Faculty - Fall 2006



Source: Full-time, Academic Affairs Office (Fall 2002- Fall 2005) and Human Resource (Fall 2006); Part-Time, Institutional Research Census.

D-2: College and Rank of Full-Time Faculty Fall 2002 - Fall 2006

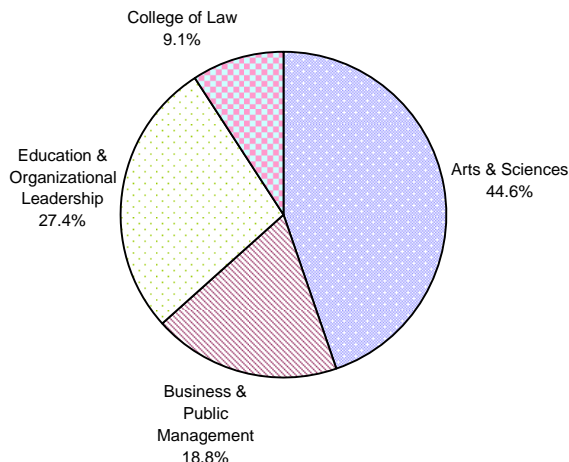
College/School	Rank	Fall 2002		Fall 2003		Fall 2004		Fall 2005		Fall 2006	
College of Arts & Sciences	Professor	40	46.0%	41	45.6%	41	45.1%	39	42.9%	36	43.4%
	Associate Professor	20	23.0%	25	27.8%	33	36.3%	39	42.9%	31	37.3%
	Assistant Professor	27	31.0%	24	26.7%	17	18.7%	12	13.2%	16	19.3%
	Instructor	0	0.0%	0	0.0%	0	0.0%	1	1.1%	0	0.0%
Total		87	100.0%	90	100.0%	91	100.0%	91	100.0%	83	100.0%
College of Business & Public Management	Professor	6	35.3%	13	40.6%	17	50.0%	17	50.0%	20	57.1%
	Associate Professor	6	35.3%	10	31.3%	6	17.6%	14	41.2%	12	34.3%
	Assistant Professor	5	29.4%	8	25.0%	10	29.4%	3	8.8%	2	5.7%
	Visiting Professor	0	0.0%	1	3.1%	1	2.9%	0	0.0%	1	2.9%
Total		17	100.0%	32	100.0%	34	100.0%	34	100.0%	35	100.0%
College of Education & Organizational Leadership	Professor	12	30.0%	15	36.6%	14	35.0%	15	33.3%	16	31.4%
	Associate Professor	12	30.0%	9	22.0%	11	27.5%	12	26.7%	14	27.5%
	Assistant Professor	16	40.0%	17	41.5%	15	37.5%	18	40.0%	21	41.2%
	Total		40	100.0%	41	100.0%	40	100.0%	45	100.0%	51
College of Law	Professor	6	40.0%	7	43.8%	7	43.8%	8	47.1%	11	64.7%
	Associate Professor	2	13.3%	5	31.3%	5	31.3%	5	29.4%	3	17.6%
	Assistant Professor	7	46.7%	3	18.8%	2	12.5%	2	11.8%	3	17.6%
	Visiting Professor	0	0.0%	1	6.3%	2	12.5%	2	11.8%	0	0.0%
Total		15	100.0%	16	100.0%	16	100.0%	17	100.0%	17	100.0%
Public Affairs & Health Administration (School of Org. Mgmt.)*	Professor	3	30.0%								
	Associate Professor	5	50.0%								
	Assistant Professor	2	20.0%								
Total		10	100.0%								
Wilson Library**	Professor									1	12.5%
	Associate Professor									5	62.5%
	Instructor									2	25.0%
	Total									8	100.0%
All Colleges & Schools	Professor	67	39.6%	76	42.5%	79	43.6%	79	42.2%	84	43.3%
	Associate Professor	45	26.6%	49	27.4%	55	30.4%	70	37.4%	65	33.5%
	Assistant Professor	57	33.7%	52	29.1%	44	24.3%	35	18.7%	42	21.6%
	Visiting Professor	0	0.0%	2	1.1%	3	1.7%	2	1.1%	1	0.5%
	Instructor	0	0.0%	0	0.0%	0	0.0%	1	0.5%	2	1.0%
Total		169	100.0%	179	100.0%	181	100.0%	187	100.0%	194	100.0%

*The School of Public Affairs & Health Administration merged with the College of Business in Fall 2003 to create the College of Business & Public Management

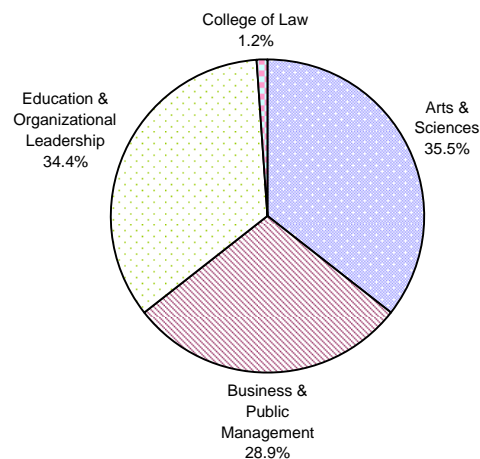
** The faculty of Wilson Library was included in College of Arts & Science before Fall 2006.

Source: Academic Affairs Office (Fall 2002- Fall 2005) and Human Resource (Fall 2006).

Full-Time Faculty by College - Fall 2006



Part-Time Faculty by College - Fall 2006

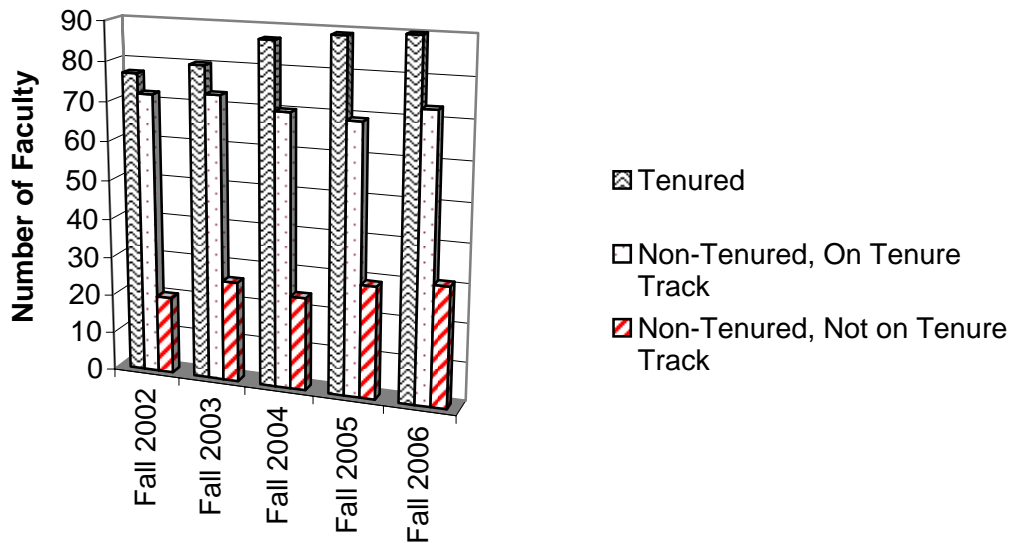


D-4: Tenure Status of Full-Time Faculty Fall 2002 - Fall 2006

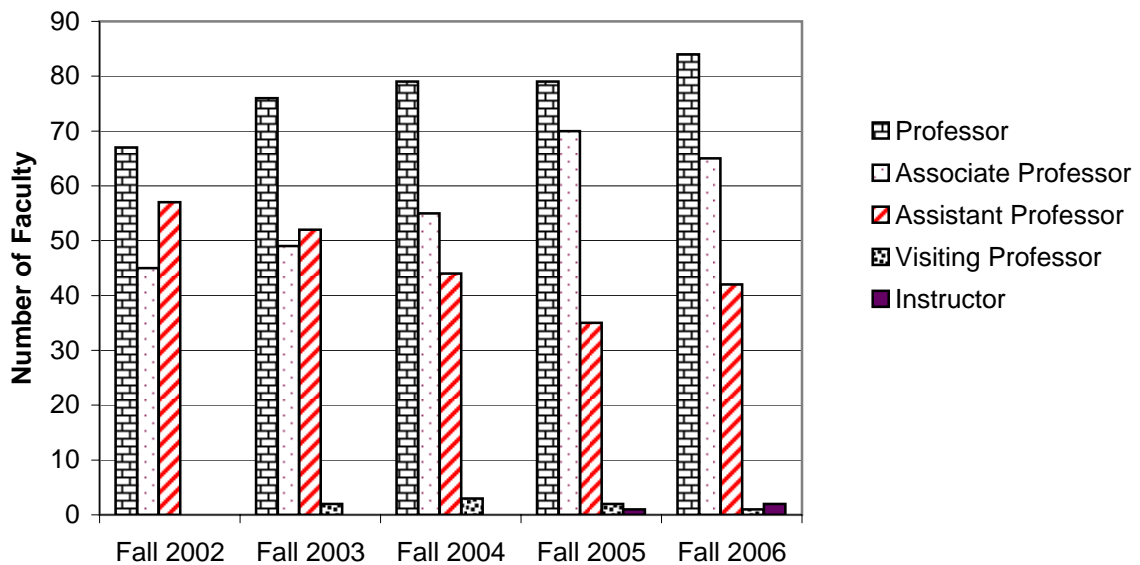
Tenure Status	Fall 2002		Fall 2003		Fall 2004		Fall 2005		Fall 2006	
Tenured	77	45.6%	80	44.7%	87	48.1%	89	47.6%	90	46.4%
Non-Tenured (On Tenure Track)	72	42.6%	73	40.8%	70	38.7%	69	36.9%	73	37.6%
Non-Tenured (Not on Tenure Track)	20	11.8%	26	14.5%	24	13.3%	29	15.5%	31	16.0%
Total	169	100%	179	100%	181	100%	187	100%	194	100%

Source: Academic Affairs Office (Fall 2002- Fall 2005) and Human Resource (Fall 2006).

Tenure Status of Full-Time Faculty



Rank of Full-Time Faculty

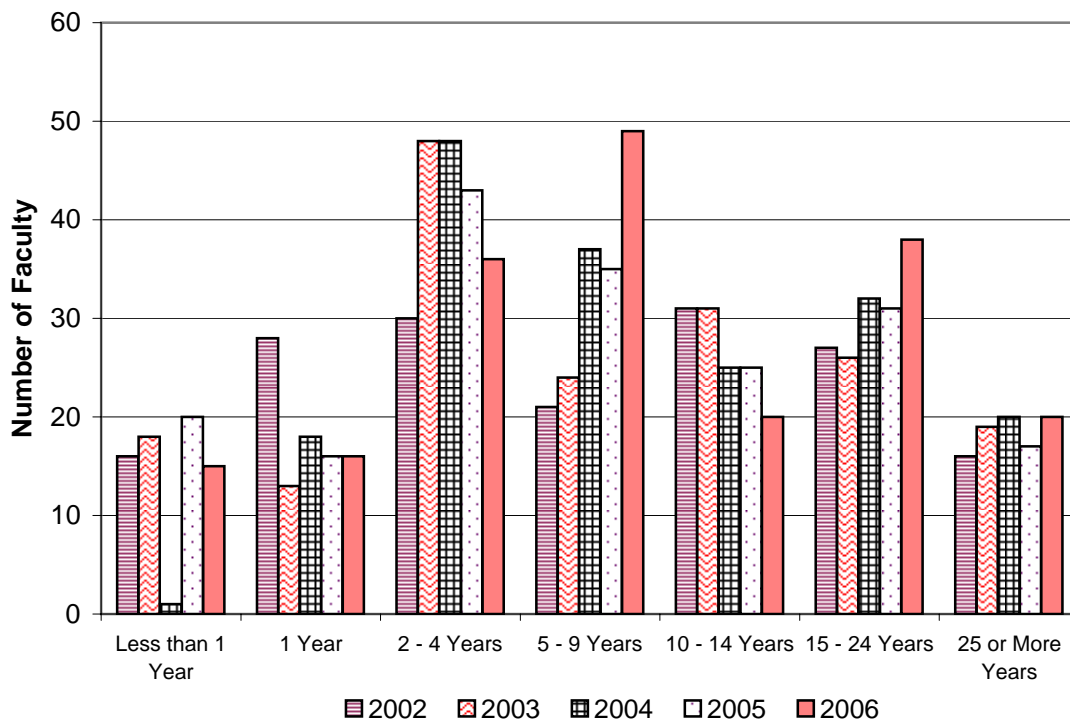


D-5: Years of Service of Full-Time Faculty Fall 2002 - Fall 2006

Years at ULV	2002	2003	2004	2005	2006
Less than 1 Year	16	18	1	20	15
1 Year	28	13	18	16	16
2 - 4 Years	30	48	48	43	36
5 - 9 Years	21	24	37	35	49
10 - 14 Years	31	31	25	25	20
15 - 24 Years	27	26	32	31	38
25 or More Years	16	19	20	17	20
Total Faculty	169	179	181	187	194

Source: Academic Affairs Office (Fall 2002- Fall 2005) and Human Resource (Fall 2006).

**Years of Service of Full-Time Faculty
Fall 2002- Fall 2006**



D-6: Gender, Ethnicity, and Appointment Status of ULV Regularly-Contracted Staff by Position - Fall 2006

By Gender and Position

Gender	Administrative/ Professional		Classified		All Positions	
Male	84	41.4%	61	31.9%	145	36.8%
Female	119	58.6%	130	68.1%	249	63.2%
	203	100.0%	191	100.0%	394	100.0%

By Ethnicity and Position

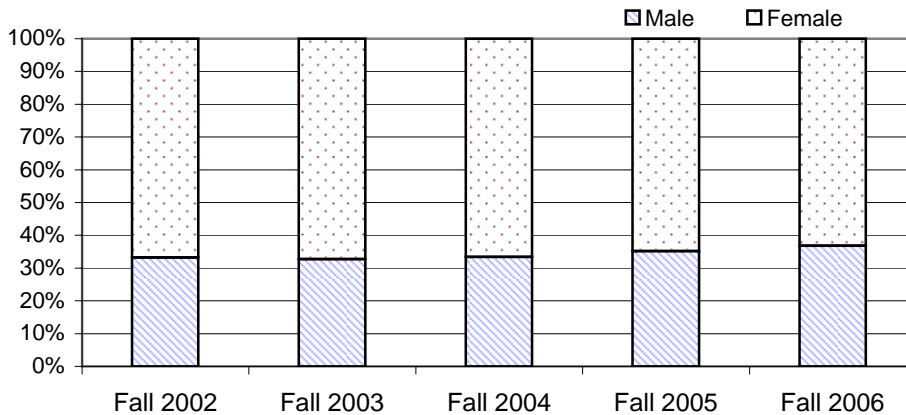
Ethnicity	Administrative/ Professional		Classified		All Positions	
Black, Non-Hispanic	17	8.4%	15	7.9%	32	8.1%
American Indian/Alaskan Native	1	0.5%	2	1.0%	3	0.8%
Asian/Pacific Islander	16	7.9%	19	9.9%	35	8.9%
Hispanic	36	17.7%	47	24.6%	83	21.1%
White, non-Hispanic	127	62.6%	103	53.9%	230	58.4%
Unknown	6	3.0%	5	2.6%	11	2.8%
	203	100.0%	191	100.0%	394	100.0%

By Appointment and Position

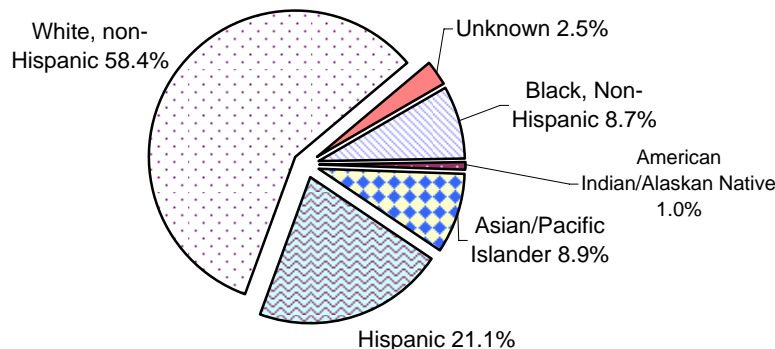
	Administrative/ Professional		Classified		All Positions	
Full-Time	195	96.1%	177	92.7%	372	94.4%
Part-Time	8	3.9%	14	7.3%	22	5.6%
Total Staff	203	100.0%	191	100.0%	394	100.0%

Source: Human Resources

Staff by Gender (Fall 2002- Fall 2006)



Staff by Ethnicity - Fall 2006



E.
FINANCE
AND
FINANCIAL
AID

E-1: Finances for Fiscal Year 2006

Assets	2001-02	2002-03	2003-04	2004-05	2005-06
Current Assets	55,461,499	55,340,261	60,320,398	64,818,655	78,089,346
Property, plant and equipment:					
Land	690,093	6,690,094	6,894,401	8,595,901	8,595,901
Buildings and improvements	46,824,048	47,044,205	47,884,017	49,520,017	54,232,327
Equipment	14,184,442	15,909,389	17,433,187	19,012,448	25,081,342
Asset Retirement capitalized costs					125,727
Construction in progress	<u>971,058</u>	<u>980,374</u>	<u>1,026,038</u>	<u>1,813,678</u>	<u>4,211,422</u>
	62,669,641	70,624,062	73,237,643	78,942,044	92,246,719
Less: Accumulated depreciation	(26,104,900)	(30,187,517)	(34,199,909)	(38,289,986)	(42,915,014)
Total property, plant and equipment	<u>42,564,741</u>	<u>40,436,545</u>	<u>39,037,734</u>	<u>40,652,058</u>	<u>49,331,705</u>
Total assets	\$98,026,240	\$95,776,806	\$99,358,132	105,470,713	\$127,421,051
Liabilities and Net Assets					
Liabilities	41,618,446	41,201,795	41,019,832	43,487,181	53,273,155
Net Assets	<u>56,407,794</u>	<u>54,575,011</u>	<u>58,338,300</u>	<u>61,983,532</u>	<u>74,147,896</u>
Total liabilities and net assets	\$9,826,240	\$95,776,806	\$99,358,132	105,470,713	\$127,421,051
Student Grants					
Pell grants	2,958,773	3,222,383	3,404,476	3,949,240	3,612,718
Other federal grants	952,031	867,623	1,079,653	987,862	857,065
State grants	5,641,170	6,535,132	6,585,254	7,685,589	7,985,972
Funded institutional grants	920,255	674,942	730,651	755,282	720,954
Unfunded institutional grants	<u>8,534,385</u>	<u>10,421,262</u>	<u>10,582,620</u>	<u>14,686,639</u>	<u>14,781,382</u>
Total student grants	19,006,614	21,721,342	22,382,654	28,064,612	27,958,091

Source: Audited Financial Statements/General Ledger

E-1: Finances for Fiscal Year 2006 (Continued)

Sources of Funds	2001-02	2002-03	2003-04	2004-05	2005-06
Student tuition and fees	69,753,149	77,741,926	80,736,486	90,463,374	95,726,613
Less: Student financial aid	<u>(11,213,517)</u>	<u>(11,979,900)</u>	<u>(12,488,185)</u>	<u>(16,695,746)</u>	<u>(17,096,534)</u>
Net student tuition and fees	58,539,632	65,762,026	68,288,301	73,767,628	78,630,079
Private gifts and grants	2,437,607	4,782,732	4,618,836	5,190,813	10,321,740
Government grants (Federal and State)	985,045	998,783	1,232,907	1,355,109	1,114,701
Sponsored programs					413,918
Investment income	1,386,455	1,106,932	4,084,049	2,710,215	5,740,783
Auxiliary enterprises	2,988,574	3,508,096	3,750,005	4,333,370	4,236,733
Annuity and trust gifts	1,001,870	318,000	25,000	10,000	103,753
Premiums earned					1,088,845
Other	<u>1,149,204</u>	<u>981,308</u>	<u>1,131,016</u>	<u>1,271,781</u>	<u>922,880</u>
Total revenues	68,488,387	77,457,877	83,130,114	88,638,916	102,573,432
Expenses					
Instruction	37,234,290	40,859,841	42,772,144	42,967,152	41,252,341
Academic support	9,081,676	9,523,780	9,140,230	14,961,489	14,074,638
Student services	10,073,053	10,832,060	10,585,736	11,062,904	11,285,116
Institutional support	14,069,209	13,643,676	12,371,895	11,444,907	20,031,591
Auxiliary enterprises	<u>4,380,707</u>	<u>4,431,303</u>	<u>4,496,820</u>	<u>4,557,232</u>	<u>3,765,382</u>
Total expenses	<u>74,838,935</u>	<u>79,290,660</u>	<u>79,366,825</u>	<u>84,993,684</u>	<u>90,409,068</u>
Change in Net Assets	(6,350,548)	(1,832,783)	3,763,289	3,645,232	12,164,364
Net assets at beginning of year	62,758,342	56,407,794	54,575,011	58,338,300	61,983,532
Net assets at end of year	56,407,794	54,575,011	58,338,300	61,983,532	\$74,147,896

Source: Audited Financial Statements

**E-2: Financial Aid for Traditional-Age Full-Time Students
Fall 2002- Fall 2006**

Enrolled Students Receiving Aid:

	Fall 2002		Fall 2003		Fall 2004		Fall 2005		Fall 2006	
	Freshmen	Undergrad	Freshmen	Undergrad	Freshmen	Undergrad	Freshmen	Undergrad	Freshmen	Undergrad
a) Number of degree-seeking undergraduate students	295	1371	289	1338	375	1546	332	1579	314	1568
b) Number of students in line a who were financial aid applicants (include applicants for all types of aid)	287	1285	274	1173	343	1363	308	1387	289	1366
c) Number of students in line b who were determined to have financial need	269	1185	255	1087	313	1265	282	1306	249	1270
d) Number of students in line c who received any financial aid	269	1185	255	1087	313	1261	282	1304	149	1268
e) Number of students in line d who received any need-based gift aid	238	1086	238	1018	300	1216	233	1192	234	1184
f) Number of students in line d who received any need-based self-help aid	206	920	201	882	276	1097	86	356	216	1116
g) Number of students in line d who received any non-need-based gift aid	224	995	226	946	294	1118	239	1168	174	1088
h) Number of students in line d whose need was fully met (exclude PLUS loans, unsubsidized loans, and private alternative loans)	79	235	55	328	46	245	1	24	18	162
i) On average, the percentage of need that was met of students who received any need-based aid. Exclude any resources that were awarded to replace EFC (PLUS loans, unsubsidized loans, and private alternative loans)	88%	83%	85%	85%	80%	78%	70%	72%	64%	68%
j) The average financial aid package of those in line d. Exclude any resources that were awarded to replace EFC (PLUS loans, unsubsidized loans, and private alternative loans)	\$20,562	\$19,477	\$23,895	24188	\$21,985	\$21,604	\$18,403	\$20,636	\$18,223	\$20,615
k) Average need-based gift award of those in line e	\$11,224	\$10,318	\$10,182	\$10,027	\$10,572	\$10,995	\$9,243	\$10,620	\$10,033	\$10,763
l) Average need-based self-help award (excluding PLUS loans, unsubsidized loans, and private alternative loans) of those in line f	\$4,207	\$5,249	\$4,390	\$5,171	\$4,904	\$5,691	\$1,783	\$2,163	\$2,324	\$3,207
m) Average need-based loan (excluding PLUS loans, unsubsidized loans, and private alternative loans) of those in line f who received a need-based loan	\$3,581	\$4,424	\$3,813	\$5,413	\$2,907	\$3,442	\$4,417	\$4,637	\$2,445	\$3,447

Number of Enrolled Students Receiving Non-Need-Based Grants and Scholarships:

n) Number of students in line a who had no financial need and who received non-need-based gift aid (exclude those receiving athletic awards and tuition benefits)	15	57	27	148	49	202	42	211	66	384
o) Average dollar amount of non-need-based gift aid awarded to students in line n	\$9,749	\$7,456	\$8,414	\$7,144	\$9,204	\$7,716	\$8,988	\$7,929	\$8,890	\$6,792
p) Number of students in line a who received a non-need-based athletic grant or scholarship	0	0	0	0	NA	NA	NA	NA	0	0
q) Average dollar amount of non-need-based athletic grants and scholarships awarded to students in line p	\$0	\$0	0	0	NA	NA	NA	NA	0	0

* "Freshmen" is for "First-Time Full-Time Freshmen", and "Undergrad" is for "Full-time Undergraduate, including Freshmen".

Source: Common Data Set 2002-2003, 2003-2004, 2004-2005, and 2005-2006; Financial Aid Office.