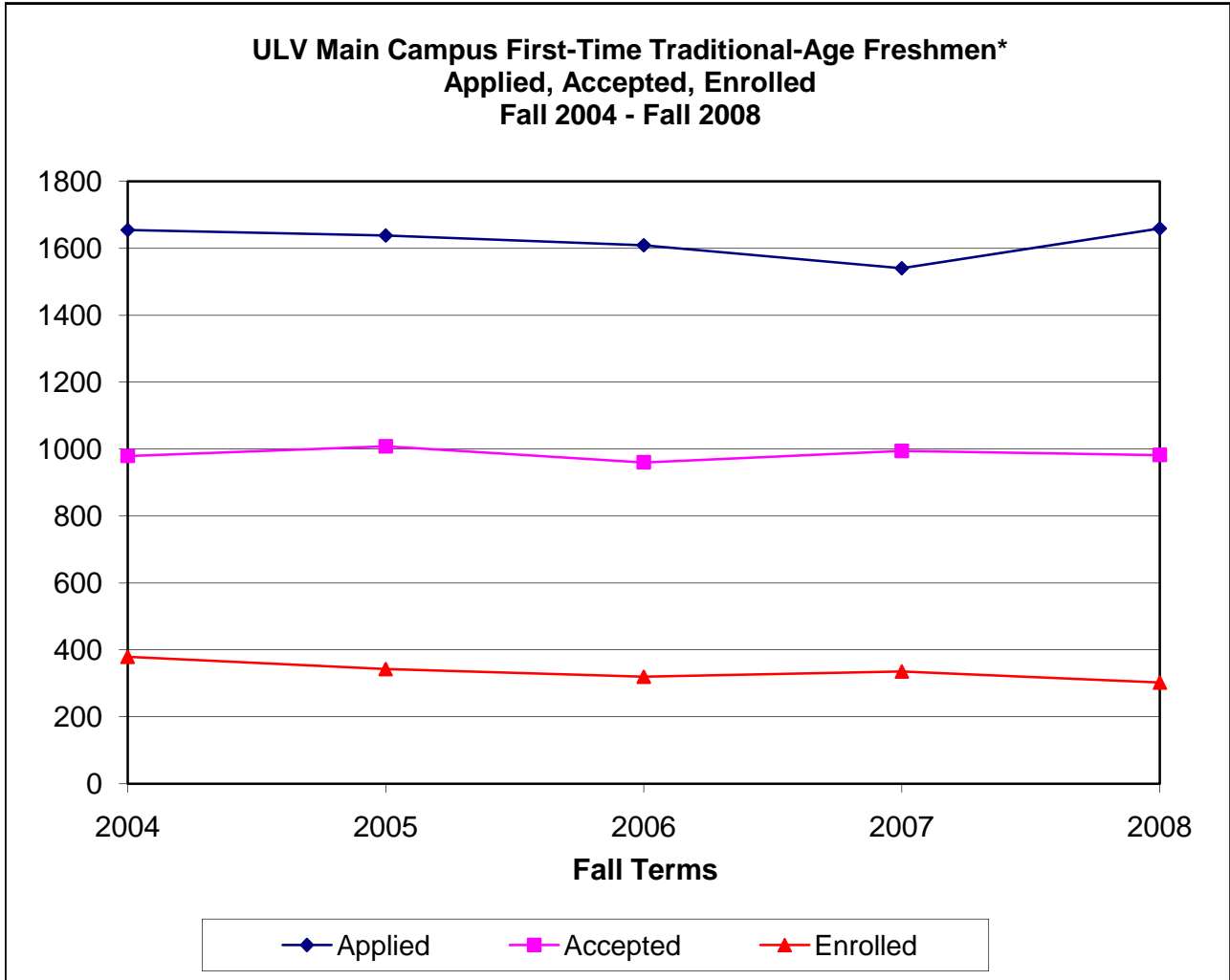


B-1: Admission Statistics for Main Campus First-Time Traditional-Age Freshmen*

Application, Acceptance, and Enrollment Statistics Fall 2003 - Fall 2007



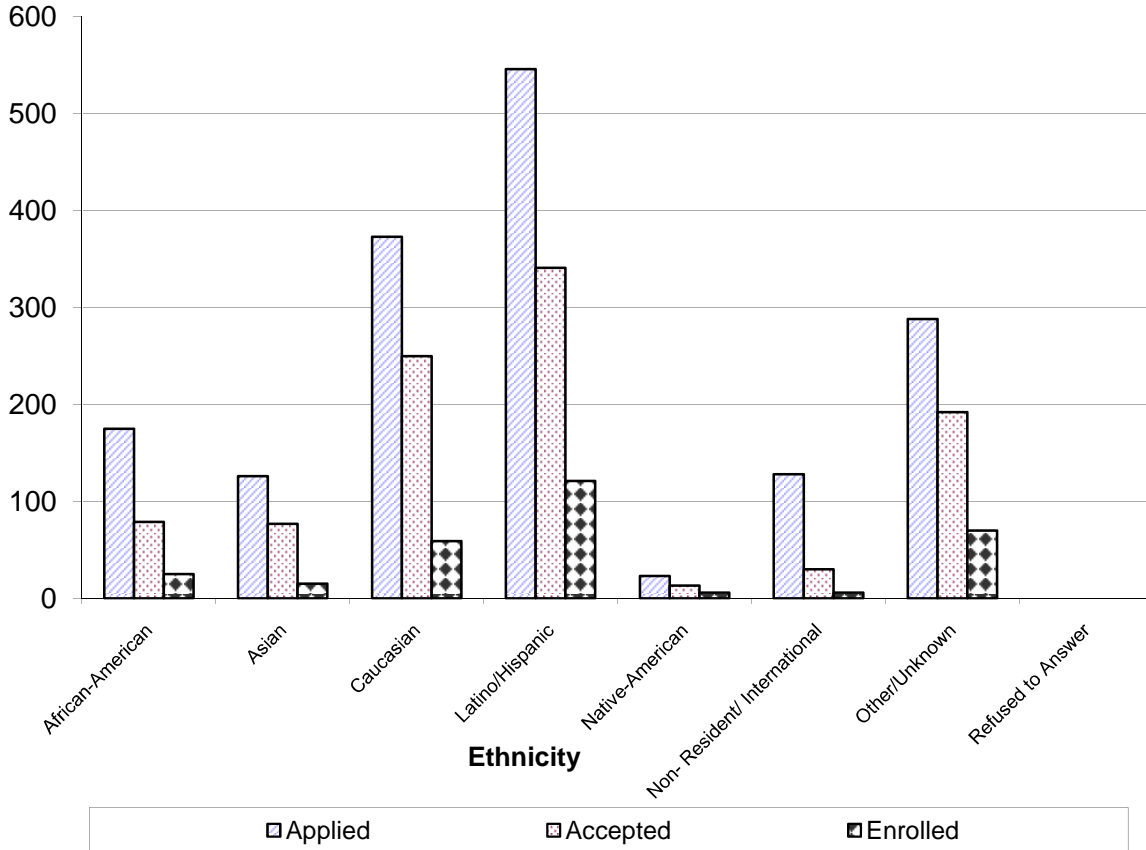
Fall	Applied	Accepted	Acceptance Rate	Enrolled	Yield Rate
2004	1654	979	59%	379	39%
2005	1638	1008	62%	342	34%
2006	1609	960	60%	319	33%
2007	1540	994	65%	335	34%
2008	1659	982	59%	302	31%

* Does not include Advanced Freshmen, who have taken less than 32 college credits after graduating from high school.

Source: Institutional Research Admission Census on October 15, except the "enrolled" for 2006 and after, which are from Institutional Research Census on November 15 of each year.

B-2: Application, Acceptance, and Enrollment Statistics by Ethnicity of Main Campus First Time Traditional-Age Freshmen

**ULV Main Campus First-Time Traditional-Age Freshmen*
Applied, Accepted, Enrolled
Fall 2008**



Ethnicity	Yield Rate Fall 2002- Fall 2007						Fall 2008				
	2002	2003	2004	2005	2006	2007	Applied	Accepted	Enrolled	Acceptan ce Rate	Yield Rate
African-American	28%	32%	33%	32%	28%	29%	175	79	25	45%	32%
Asian	22%	20%	17%	20%	20%	21%	126	77	15	61%	19%
Caucasian	39%	39%	40%	32%	55%	35%	373	250	59	67%	24%
Latino/Hispanic	44%	43%	44%	40%	40%	35%	546	341	121	62%	35%
Native-American	100%	50%	75%	0%	0%	0%	23	13	6	57%	46%
Non- Resident/ International	-	-	0	10%	25%	22%	128	30	6	23%	20%
Other/Unknown	45%	30%	41%	38%	26%	28%	288	192	70	67%	36%
Refused to Answer	-	-	33%	29%	50%	40%	0	0	0	-	-

Source: Institutional Research Admission Census on October 15, except the "enrolled" for 2006 and after, which are from Institutional Research Census on November 15 of each year.

**B-3: New Main Campus Traditional-Age Students by Gender
Fall 2004 - Fall 2008**

New First-Time Freshmen

Gender	Fall 2004		Fall 2005		Fall 2006		Fall 2007		Fall 2008	
Male	123	30.5%	106	30.1%	111	34.8%	116	34.5%	133	44.0%
Female	280	69.5%	246	69.9%	208	65.2%	220	65.5%	169	56.0%
Total	403	100.0%	352	100.0%	319	100.0%	336	100.0%	302	100.0%

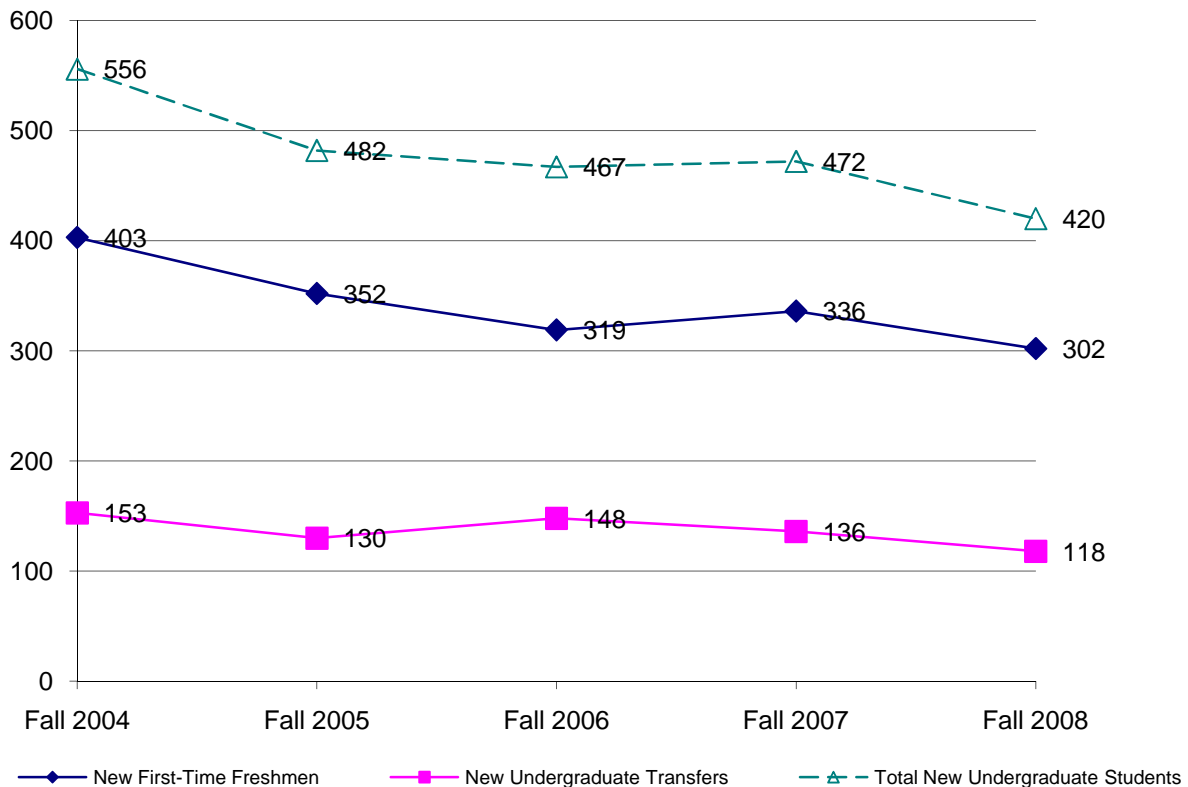
New Undergraduate Transfers

Male	80	52.3%	56	43.1%	74	50.0%	62	45.6%	54	45.8%
Female	73	47.7%	74	56.9%	74	50.0%	74	54.4%	64	54.2%
Total	153	100.0%	130	100.0%	148	100.0%	136	100.0%	118	100.0%

Total New Undergraduate Students

Male	203	36.5%	162	33.6%	185	39.6%	178	37.7%	187	44.5%
Female	353	63.5%	320	66.4%	282	60.4%	294	62.3%	233	55.5%
Total New Students	556	100%	482	100%	467	100%	472	100%	420	100%

New Main Campus Undergraduate Enrollment (Fall 2004 - Fall 2008)



Source: Fall 2002-Fall 2005, Institutional Research Admission Census on October 15; Fall 2006 and after, Institutional Research Annual Census on November 15 of each year.

**B-4: Main Campus New Traditional-Age Students by Ethnicity
Fall 2004 - Fall 2008**

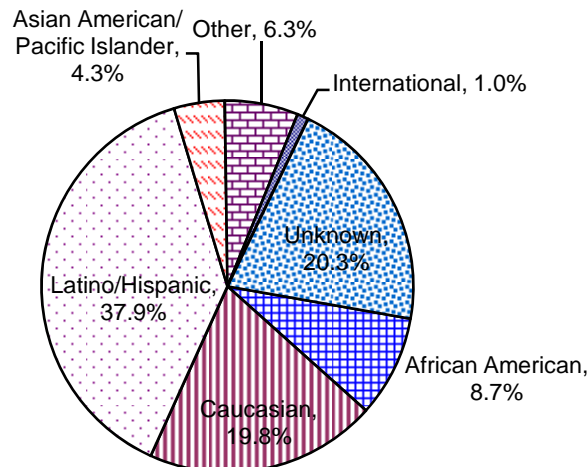
New Traditional-Age Freshmen

Ethnicity	Fall 2004		Fall 2005		Fall 2006		Fall 2007		Fall 2008	
	Count	%	Count	%	Count	%	Count	%	Count	%
American Indian/ Alaskan Native	3	0.7%	0	0.0%	0	0.0%	4	1.2%	6	2.0%
African American	33	8.2%	33	9.4%	23	7.2%	18	5.4%	25	8.3%
Caucasian	145	36.0%	107	30.4%	98	30.7%	97	28.9%	59	19.5%
Latino/Hispanic	156	38.7%	135	38.4%	138	43.3%	152	45.2%	121	40.1%
Asian American/ Pacific Islander	13	3.2%	18	5.1%	16	5.0%	11	3.3%	15	5.0%
Other	26	6.5%	25	7.1%	16	5.0%	21	6.3%	18	6.0%
International	0	0.0%	0	0.0%	4	1.3%	2	0.6%	6	2.0%
Unknown	27	6.7%	34	9.7%	24	7.5%	31	9.2%	52	17.2%
Total	403	100%	352	100%	319	100%	336	100%	302	100%

New Traditional-Age Transfers

Ethnicity	Fall 2004		Fall 2005		Fall 2006		Fall 2007		Fall 2008	
	Count	%	Count	%	Count	%	Count	%	Count	%
American Indian/ Alaskan Native	0	0.0%	1	0.8%	0	0.0%	0	0.0%	1	0.8%
African American	20	13.1%	17	13.1%	18	12.2%	10	7.4%	11	9.3%
Caucasian	57	37.3%	43	33.1%	60	40.5%	49	36.0%	23	19.5%
Latino/Hispanic	47	30.7%	45	34.6%	36	24.3%	47	34.6%	36	30.5%
Asian American/ Pacific Islander	4	2.6%	5	3.8%	8	5.4%	5	3.7%	3	2.5%
Other	8	5.2%	2	1.5%	3	2.0%	5	3.7%	8	6.8%
International	7	4.6%	9	6.9%	2	1.4%	7	5.1%	4	3.4%
Unknown/Refuse to Answer	10	6.5%	8	6.2%	21	14.2%	13	9.6%	32	27.1%
Total	153	100%	130	100%	148	100%	136	100%	118	100%

Ethnicity of New Traditional-Age Freshmen and New Traditional- Age

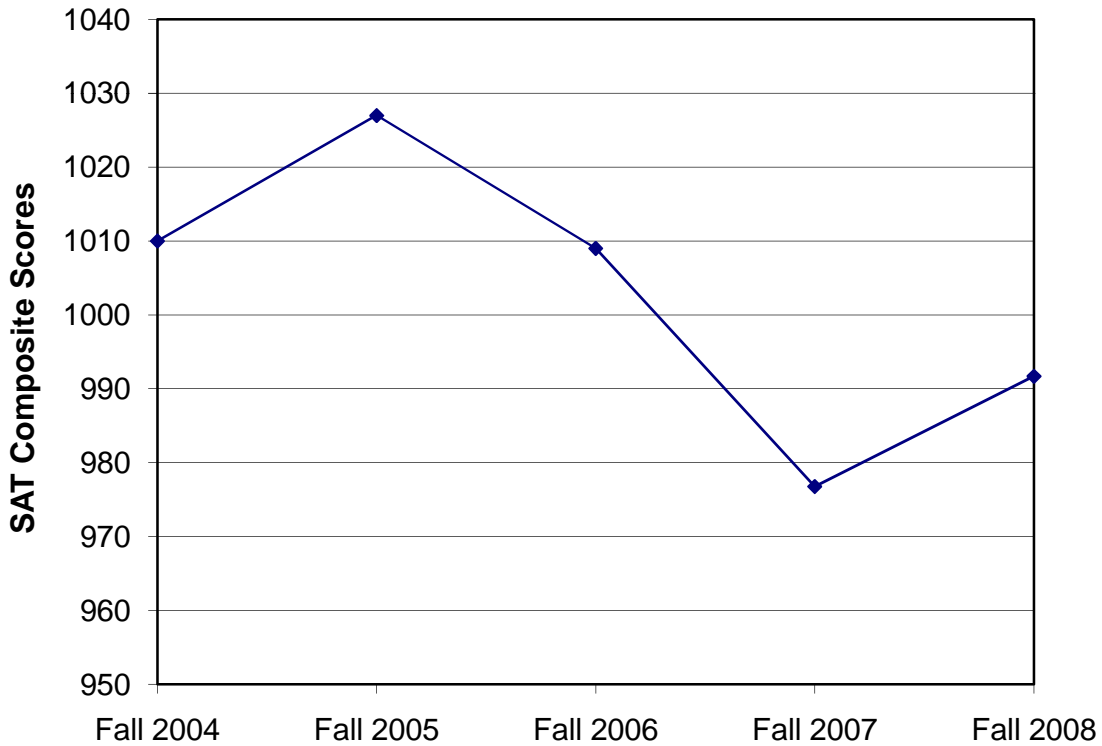


Source: Fall 2002-Fall 2005, Institutional Research Admission Census on October 15; Fall 2006 and after, Institutional Research Annual Census on November 15 of each year.

**B-5: New Main Campus Traditional-Age Freshman SAT Scores
Fall 2004 - Fall 2008**

Test Scores	Fall 2004		Fall 2005		Fall 2006		Fall 2007		Fall 2008	
	Mean	Median	Mean	Median	Mean	Median	Mean	Median	Mean	Median
SAT Math	500	510	515	510	505	500	518	480	502	500
SAT Verbal	500	502	512	510	505	500	486	480	489	490
SAT Composite	1010	1013	1027	1020	1009	1000	977	980	992	990

**Mean SAT Composite Scores
for New Main Campus Traditional-Age Freshmen
Fall 2004 - Fall 2008**



Source: Fall 2002-Fall 2005, Institutional Research Admission Census on October 15; Fall 2006 and after, Institutional Research Annual Census on November 15 and Institutional Research Admission Census on October 15.

**B-6: New Main Campus Undergraduate Students by Entrance GPA
Fall 2004 - Fall 2008**

New Main Campus Traditional-Age Freshmen

GPA Range	Fall 2004	Fall 2005	Fall 2006	Fall 2007	Fall 2008
3.50 - 4.00+	188	171	146	117	117
3.00 - 3.49	162	119	112	144	94
2.50 - 2.99	51	55	56	63	64
2.00 - 2.49	1	3	2	9	11
Below 2.00	0	0	0	1	0
GPA not reported	0	4	3	2	16
	402	352	319	336	302
Mean Freshmen GPA	3.48	3.46	3.45	3.35	3.35

New Main Campus Traditional-Age Transfers

GPA Range	Fall 2004	Fall 2005	Fall 2006	Fall 2007	Fall 2008
3.50 - 4.00+	11	14	19	19	16
3.00 - 3.49	34	43	41	40	38
2.50 - 2.99	43	51	67	41	42
2.00 - 2.49	9	11	18	22	8
Below 2.00	0	0	0	0	0
GPA not reported	12	11	3	14	14
	109	130	148	136	118
Mean Transfer GPA	3	2.99	2.97	2.97	3.04

Source: Fall 2002-Fall 2005, Institutional Research Admission Census on October 15; Fall 2006 and after, Institutional Research Annual Census on November 15 and Institutional Research Admission Census on October 15.

**B-7: Top 15 High School Origins of New Main Campus First-Time Traditional-Age Freshmen
Fall 2004 - Fall 2008**

High School Origin	Fall 2004	Fall 2005	Fall 2006	Fall 2007*	Fall 2008
Bonita High School	17	8	14	15	10
Bishop Amat Memorial High Sch	4	8	7	7	9
Damien High School	4	3	13	7	9
Alta Loma High School	1	7	4	9	8
Claremont High School	5	5	5	10	7
Colony High School					6
Charter Oak High School	7	2	8	6	6
Upland High School	13	12	10	5	6
Diamond Ranch High School	2	3	6	3	6
Rancho Cucamonga High School	5	2	4	4	6
Coachella Valley High School	6		1	1	6
South Hills High School	5	7	7	6	6
Saint Lucys Priory School	4	3	5	11	5
Glendora High School	8	8	6	11	5
Chaffey High School	7	5	12	5	5
Covina High School	3	8	4	5	5
Other Schools	212	322	246	214	197
Gand Total	303	403	352	319	302

**B-8: Top 15 College/University Origins of New Main Campus Traditional-Age Undergraduate Transfers
Fall 2004 - Fall 2008**

College/University	Fall 2004	Fall 2005	Fall 2006	Fall 2007	Fall 2008
Citrus College	9	14	9	15	19
Mount San Antonio College	21	22	10	10	17
Chaffey Community College	4	6	5	10	17
Riverside Community College	4	5	4	2	3
Azusa Pacific University	2	4	2	7	3
Pasadena City College	6	9	6	6	3
Orange Coast College	1	1	3	3	2
Fullerton College	2	4	3	2	2
Rio Hondo College	6	3	6	5	2
CSU, Los Angeles					2
Fresno City College					2
San Joaquin Valley College			3		2
New Mexico Military Institute					1
Everest College	5		2	1	1
College of the Desert					1
Other Colleges/Universities	49	85	77	87	41
Gand Total	109	153	130	148	118

Source: Fall 2002-Fall 2005, Institutional Research Admission Census on October 15; Fall 2006 and after, Institutional Research Annual Census on November 15.

**B-9: New Main Campus Traditional-Age Students by Geographic Region
Fall 2004 - Fall 2008**

U.S. State	Fall 2004	Fall 2005	Fall 2006	Fall 2007	Fall 2008
Arizona	3	3	4	0	2
California	513	451	429	444	396
Colorado	1	0	2	1	0
Connecticut	1	0	0	0	1
Florida	0	1	1	1	0
Guam	0	0	0	0	1
Hawaii	5	3	8	1	2
Idaho	1	0	0	0	0
Illinois	1	0	1	0	0
Indiana	0	0	1	0	0
Kansas	0	0	0	0	0
Kentucky	0	0	0	0	0
Massachusetts	1	0	0	1	0
Maryland	0	0	1	0	0
Minnesota	0	0	0	0	1
Missouri	1	0	0	0	1
Nevada	1	2	0	2	3
New Hampshire	2	0	0	0	0
New Jersey	1	0	0	1	0
New Mexico	1	0	0	0	0
New York	1	2	1	1	0
North Carolina	0	0	0	0	1
Ohio	1	0	1	0	2
Oklahoma	0	0	0	0	1
Oregon	3	0	4	5	1
Pennsylvania	2	0	0	2	0
Texas	1	0	0	0	2
Utah	0	0	1	2	0
Virginia	1	1	0	1	0
Washington	8	8	5	2	3
Wyoming	0	0	0	0	1
Unknown U.S. State	0	2	8	8	2
Total U.S. Residents	549	473	467	472	420

Source: Fall 2002-Fall 2005, Institutional Research Admission Census on October 15; Fall 2006 and after, Institutional Research Annual Census on November 15 and Institutional Research Admission Census on October 15.

**B-10: Main Campus New Traditional-Age International Students by Geographic Region
Fall 2004 - Fall 2008**

Foreign Country	Fall 2004	Fall 2005	Fall 2006	Fall 2007	Fall 2008
Canada	0	0	1	0	0
China	0	0	1	1	2
Ecuador	2	1	0	0	0
France	1	2	0	0	0
Germany	0	0	0	0	0
Indonesia	0	0	0	0	0
Japan	1	2	1	0	0
Lebanon	0	0	0	0	0
Mexico	0	1	0	0	0
Philippines	0	0	1	0	0
Saudi Arabia	0	0	0	0	11
Spain	1	1	0	0	0
Taiwan	0	0	2	0	1
Thai	0	0	0	0	1
Turkey	0	0	0	1	0
United Kingdom	2	2	0	0	0
Ukraine	0	0	0	1	0
Vietnam	0	0	0	0	1
Unknown Foreign Country	0	0	0	0	0
Total Foreign Students	7	9	6	3	16

Source: International and Study Abroad Center.

**B-11: New Main Campus Traditional-Age Freshmen by Major
Fall 2004 - Fall 2008**

College Major	Fall 2004 Count	Fall 2004 %	Fall 2005 Count	Fall 2005 %	Fall 2006 Count	Fall 2006 %	Fall 2007 Count	Fall 2007 %	Fall 2008 Count	Fall 2008 %
Arts & Sciences										
Anthropology	1	0.2%	2	0.6%	3	0.9%	0	0.0%	2	0.7%
Art/Art History	2	0.5%	3	0.9%	3	0.9%	3	0.9%	2	0.7%
Athletic Training	15	3.7%	11	3.1%	12	3.8%	12	3.6%	14	4.6%
Behavioral Science	2	0.5%	1	0.3%	0	0.0%	2	0.6%	1	0.3%
Biology	23	5.7%	24	6.8%	26	8.2%	29	8.6%	20	6.6%
Broadcasting	9	2.2%	7	2.0%	7	2.2%	6	1.8%	3	1.0%
Chemistry	3	0.7%	5	1.4%	8	2.5%	2	0.6%	4	1.3%
Communications	13	3.2%	18	5.1%	19	6.0%	15	4.5%	11	3.6%
Comparative Literature	0	0.0%	1	0.3%	0	0.0%	0	0.0%	0	0.0%
Computer Science & Engineering	8	2.0%	5	1.4%	9	2.8%	4	1.2%	11	3.6%
Criminology	22	5.5%	20	5.7%	20	6.3%	11	3.3%	17	5.6%
English	17	4.2%	5	1.4%	6	1.9%	9	2.7%	4	1.3%
Environmental Biology/Management	1	0.2%	0	0.0%	1	0.3%	0	0.0%	1	0.3%
German	1	0.2%	0	0.0%	0	0.0%	0	0.0%	0	0.0%
History	9	2.2%	6	1.7%	7	2.2%	4	1.2%	7	2.3%
International Business & Language	3	0.7%	2	0.6%	3	0.9%	2	0.6%	2	0.7%
International Studies	1	0.2%	0	0.0%	0	0.0%	2	0.6%	1	0.3%
Italian Studies	0	0.0%	0	0.0%	0	0.0%	0	0.0%	0	0.0%
Journalism	13	3.2%	10	2.8%	9	2.8%	10	3.0%	9	3.0%
Legal Studies	16	4.0%	15	4.3%	2	0.6%	5	1.5%	4	1.3%
Liberal Arts	6	1.5%	4	1.1%	3	0.9%	1	0.3%	5	1.7%
Mathematics	5	1.2%	6	1.7%	3	0.9%	3	0.9%	5	1.7%
Movement & Sports Science	7	1.7%	10	2.8%	3	0.9%	9	2.7%	8	2.6%
Music	2	0.5%	0	0.0%	0	0.0%	2	0.6%	0	0.0%
Natural History	1	0.2%	0	0.0%	0	0.0%	0	0.0%	0	0.0%
Philosophy	0	0.0%	2	0.6%	0	0.0%	1	0.3%	1	0.3%
Physics	1	0.2%	0	0.0%	1	0.3%	0	0.0%	0	0.0%
Political Science	6	1.5%	11	3.1%	10	3.1%	13	3.9%	15	5.0%
Psychology	33	8.2%	28	8.0%	29	9.1%	27	8.0%	24	7.9%
Religion/Philosophy	0	0.0%	0	0.0%	2	0.6%	1	0.3%	0	0.0%
Social Science	2	0.5%	1	0.3%	0	0.0%	1	0.3%	1	0.3%
Sociology	4	1.0%	4	1.1%	3	0.9%	6	1.8%	1	0.3%
Spanish	0	0.0%	2	0.6%	0	0.0%	1	0.3%	0	0.0%
Speech Communication	1	0.2%	0	0.0%	1	0.3%	6	1.8%	0	0.0%
Theatre Arts	5	1.2%	9	2.6%	6	1.9%	3	0.9%	8	2.6%
	232	57.6%	212	60.2%	196	61.4%	190	56.5%	181	59.9%
Business & Public Management										
Accounting	4	1.0%	2	0.6%	4	1.3%	8	2.4%	6	2.0%
Business Administration/Management	24	6.0%	31	8.8%	52	16.3%	55	16.4%	47	15.6%
Economics	1	0.2%	0	0.0%	2	0.6%	4	1.2%	5	1.7%
E-Commerce	0	0.0%	1	0.3%	1	0.3%	0	0.0%	4	1.3%
Health Administration	3	0.7%	0	0.0%	0	0.0%	0	0.0%	0	0.0%
Marketing	2	0.5%	3	0.9%	0	0.0%	0	0.0%	0	0.0%
Public Administration	1	0.2%	2	0.6%	0	0.0%	2	0.6%	1	0.3%
	35	8.7%	39	11.1%	59	18.5%	69	20.5%	63	20.9%
Education & Organizational Leadership										
Child Development	4	1.0%	6	1.7%	1	0.3%	6	1.8%	5	1.7%
Liberal Studies	20	5.0%	20	5.7%	24	7.5%	28	8.3%	17	5.6%
	24	6.0%	26	7.4%	25	7.8%	34	10.1%	22	7.3%
College not Assigned										
Major not declared	112	27.8%	75	21.3%	39	12.2%	43	12.8%	36	11.9%
Grand Total All Students	403	100%	352	100%	319	100%	336	100%	302	100%

Source: Fall 2002-Fall 2005, Institutional Research Admission Census on October 15; Fall 2006 and after, Institutional Research Annual Census on November 15.

**B-12: New Main Campus Traditional-Age Transfers by Major
Fall 2004 - Fall 2008**

College Major	Fall 2004		Fall 2005		Fall 2006		Fall 2007		Fall 2008	
	Count	%	Count	%	Count	%	Count	%	Count	%
Arts & Sciences										
Anthropology	1	0.7%	0	0.0%	0	0.0%	0	0.0%	0	0.0%
Art/Art History	0	0.0%	1	0.8%	2	1.4%	3	2.2%	0	0.0%
Athletic Training	1	0.7%	4	3.1%	1	0.7%	1	0.7%	1	0.8%
Behavioral Science	2	1.3%	1	0.8%	1	0.7%	0	0.0%	0	0.0%
Biology	3	2.0%	1	0.8%	10	6.8%	3	2.2%	5	4.2%
Broadcasting	3	2.0%	9	6.9%	2	1.4%	2	1.5%	4	3.4%
Chemistry	2	1.3%	0	0.0%	1	0.7%	1	0.7%	0	0.0%
Communications	13	8.6%	4	3.1%	9	6.1%	12	8.8%	4	3.4%
Comparative Literature	0	0.0%	0	0.0%	0	0.0%	0	0.0%	0	0.0%
Computer Science & Engineering	2	1.3%	0	0.0%	2	1.4%	1	0.7%	3	2.5%
Criminology	8	5.3%	6	4.6%	4	2.7%	6	4.4%	2	1.7%
English	2	1.3%	4	3.1%	1	0.7%	1	0.7%	5	4.2%
French	0	0.0%	0	0.0%	0	0.0%	4	2.9%	0	0.0%
History	7	4.6%	3	2.3%	5	3.4%	1	0.7%	3	2.5%
International Business & Language	0	0.0%	2	1.5%	0	0.0%	6	4.4%	2	1.7%
International Studies	0	0.0%	0	0.0%	2	1.4%	1	0.7%	0	0.0%
Journalism	2	1.3%	0	0.0%	2	1.4%	0	0.0%	2	1.7%
Legal Studies/Paralegal Studies	2	1.3%	6	4.6%	5	3.4%	2	1.5%	0	0.0%
Liberal Arts	4	2.6%	4	3.1%	1	0.7%	3	2.2%	1	0.8%
Mathematics	1	0.7%	1	0.8%	2	1.4%	1	0.7%	0	0.0%
Movement & Sports Science	8	5.3%	3	2.3%	11	7.4%	1	0.7%	13	11.0%
Music	1	0.7%	0	0.0%	0	0.0%	7	5.1%	0	0.0%
Philosophy	1	0.7%	0	0.0%	1	0.7%	1	0.7%	1	0.8%
Physics	0	0.0%	0	0.0%	1	0.7%	1	0.7%	0	0.0%
Political Science	2	1.3%	4	3.1%	10	6.8%	3	2.2%	1	0.8%
Psychology	14	9.3%	11	8.5%	6	4.1%	8	5.9%	13	11.0%
Religion/Philosophy	0	0.0%	1	0.8%	2	1.4%	2	1.5%	0	0.0%
Social Science	0	0.0%	1	0.8%	1	0.7%	1	0.7%	1	0.8%
Sociology	4	2.6%	3	2.3%	5	3.4%	5	3.7%	2	1.7%
Spanish	1	0.7%	2	1.5%	0	0.0%	1	0.7%	0	0.0%
Speech Communication	1	0.7%	0	0.0%	1	0.7%	1	0.0%	0	0.0%
Theatre Arts	0	0.0%	3	2.3%	3	2.0%	1	0.7%	1	0.8%
	85	56.3%	74	56.9%	91	61.5%	80	58.1%	64	54.2%
Business & Public Management										
Accounting	2	1.3%	0	0.0%	3	2.0%	4	2.9%	5	4.2%
Business Admin./Mgmt.	19	12.6%	14	10.8%	32	21.6%	32	23.5%	19	16.1%
Economics	0	0.0%	0	0.0%	0	0.0%	0	0.0%	1	0.8%
E-Commerce	0	0.0%	0	0.0%	1	0.7%	0	0.0%	1	0.8%
Health Administration	0	0.0%	0	0.0%	0	0.0%	0	0.0%	0	0.0%
Marketing	5	3.3%	5	3.8%	0	0.0%	0	0.0%	0	0.0%
Organizational Management	0	0.0%	0	0.0%	1	0.7%	0	0.0%	1	0.8%
Public Administration	0	0.0%	2	1.5%	0	0.0%	0	0.0%	0	0.0%
	26	17.2%	21	16.2%	37	25.0%	36	26.5%	27	22.9%
Education & Organizational Leadership										
Child Development	3	2.0%	4	3.1%	4	2.7%	4	2.9%	0	0.0%
Liberal Studies	10	6.6%	14	10.8%	10	6.8%	8	6.3%	16	13.6%
Multiple Subject	0	0.0%	0	0.0%	0	0.0%	2	1.5%	2	1.7%
	13	8.6%	18	13.8%	14	9.5%	14	10.7%	18	15.3%
College not Assigned										
Major not declared	27	17.9%	17	13.1%	6	4.1%	6	4.4%	9	7.6%
Grand Total All Students	151	100%	130	100%	148	100%	136	100%	118	100%

Source: Fall 2003-Fall 2005, Institutional Research Admission Census on October 15; Fall 2006 and after, Institutional Research Annual Census on November 15.

B-13: New RCA Undergraduate Enrollment by Gender and Ethnicity*
Fall 2004 - Fall 2008

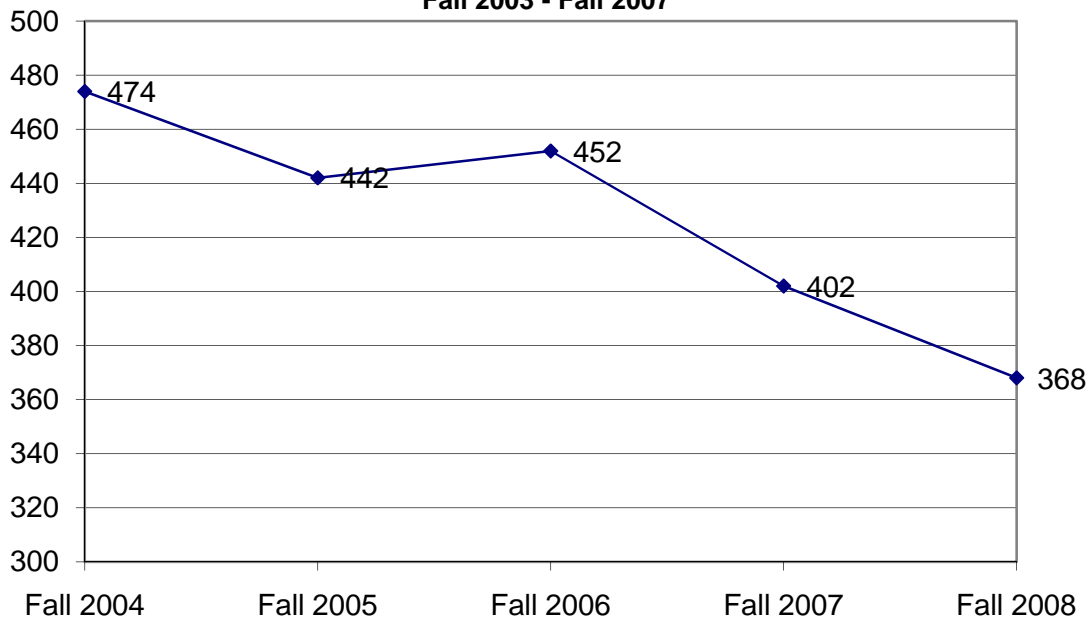
New RCA Undergraduates by Gender

Gender	Fall 2004		Fall 2005		Fall 2006		Fall 2007		Fall 2008	
	Count	%	Count	%	Count	%	Count	%	Count	%
Female	357	75.3%	340	76.9%	340	75.2%	287	71.4%	257	69.8%
Male	103	21.7%	94	21.3%	112	24.8%	107	26.6%	111	30.2%
Not Reported	14	3.0%	8	1.8%	0	0.0%	8	2.0%	0	0.0%
Total	474	100.0%	442	100.0%	452	100.0%	402	#####	368	#####

New RCA Undergraduates by Ethnicity

Ethnicity	Fall 2004		Fall 2005		Fall 2006		Fall 2007		Fall 2008	
	Count	%	Count	%	Count	%	Count	%	Count	%
American Indian/ Alaskan Native	6	1.3%	6	1.4%	6	1.3%	3	0.7%	5	1.4%
African American	50	10.5%	48	10.9%	47	10.4%	37	9.2%	28	7.6%
Caucasian	166	35.0%	149	33.7%	130	28.8%	125	31.1%	119	32.3%
Latino/Hispanic	167	35.2%	152	34.4%	163	36.1%	144	35.8%	135	36.7%
Asian American/ Pacific Islander	12	2.5%	15	3.4%	18	4.0%	22	5.5%	11	3.0%
Other	14	3.0%	11	2.5%	19	4.2%	12	3.0%	17	4.6%
International		0.0%		0.0%		0.0%	0	0.0%	0	0.0%
Unknown	59	12.4%	61	13.8%	69	15.3%	59	14.7%	53	14.4%
Total	474	100%	442	100%	452	100%	402	100%	368	100%

New RCA Undergraduate Student Enrollment
Fall 2003 - Fall 2007



* RCA (Regional Campus Administration) includes Distance Learning, CAPA, Central Coast Campus, Inland Empire Campus, High Desert Victorville Campus, Kern County Campus, Orange County Campus, Pt. Mugu Campus, San Fernando Campus, RC Education, RC Teacher Education, Ventura Campus, Vandenberg Campus, and Bakersfield Campus.

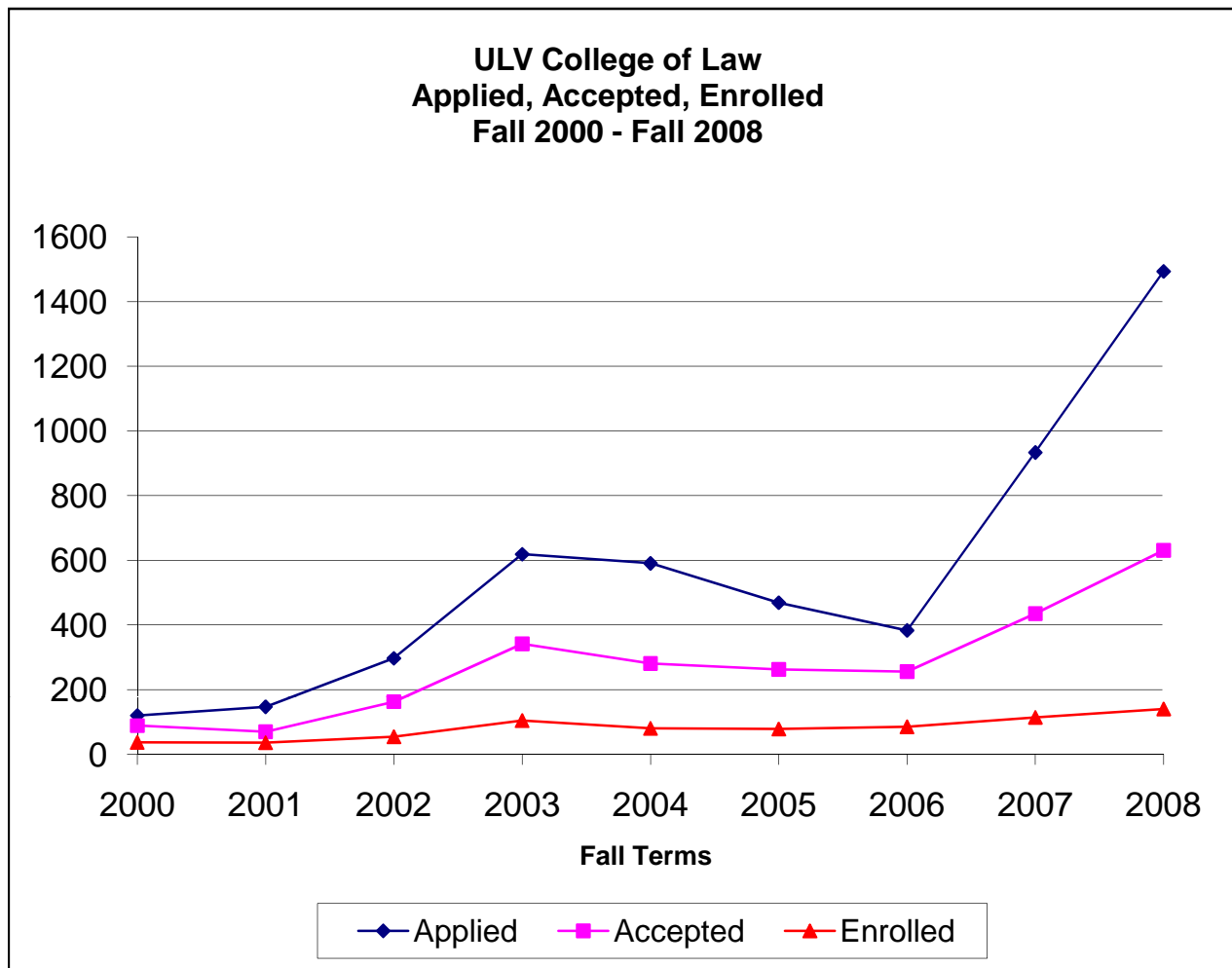
Source: Institutional Research Annual Census on November 15.

**B-14: New RCA Undergraduate Student Enrollment by Major
Fall 2004 - Fall 2008**

College Major	Fall 2004 Count	Fall 2004 %	Fall 2005 Count	Fall 2005 %	Fall 2006 Count	Fall 2006 %	Fall 2007 Count	Fall 2007 %	Fall 2008 Count	Fall 2008 %
Arts & Sciences										
Anthropology	2	0.4%	0	0.0%	0	0.0%	0	0.0%	0	0.0%
Art	3	0.6%	1	0.2%	1	0.2%	0	0.0%	0	0.0%
Art History	1	0.2%	1	0.2%	0	0.0%	1	0.2%	0	0.0%
Behavioral Science	8	1.7%	1	0.2%	3	0.7%	7	1.7%	4	1.1%
Biology	2	0.4%	3	0.7%	3	0.7%	0	0.0%	0	0.0%
Broadcasting	1	0.2%	1	0.2%	0	0.0%	0	0.0%	0	0.0%
Chemistry	0	0.0%	0	0.0%	1	0.2%	0	0.0%	0	0.0%
Communications	0	0.0%	1	0.2%	2	0.4%	0	0.0%	1	0.3%
Comparative Literature	0	0.0%	0	0.0%	1	0.2%	0	0.0%	0	0.0%
Computer Science & Engineering	2	0.4%	1	0.2%	2	0.4%	4	1.0%	2	0.5%
Criminology	14	3.0%	4	0.9%	14	3.1%	7	1.7%	7	1.9%
English	9	1.9%	4	0.9%	3	0.7%	2	0.5%	1	0.3%
History	3	0.6%	0	0.0%	0	0.0%	3	0.7%	1	0.3%
Journalism	0	0.0%	0	0.0%	0	0.0%	1	0.2%	0	0.0%
Legal Studies*	16	3.4%	10	2.3%	17	3.8%	9	2.2%	13	3.5%
Liberal Arts	0	0.0%	0	0.0%	0	0.0%	1	0.2%	0	0.0%
Mathematics	0	0.0%	0	0.0%	1	0.2%	3	0.7%	0	0.0%
Movement & Sports Science	2	0.4%	2	0.5%	3	0.7%	2	0.5%	0	0.0%
Music	0	0.0%	1	0.2%	0	0.0%	0	0.0%	0	0.0%
Political Science	6	1.3%	0	0.0%	1	0.0%	1	0.0%	3	0.0%
Psychology	12	2.5%	13	2.9%	18	4.0%	12	3.0%	14	3.8%
Social Science	1	0.2%	3	0.7%	0	0.0%	2	0.5%	3	0.8%
Sociology	11	2.3%	7	1.6%	7	1.5%	8	2.0%	8	2.2%
Spanish	0	0.0%	2	0.5%	1	0.2%	0	0.0%	1	0.3%
Speech Communication	0	0.0%	0	0.0%	1	0.2%	0	0.0%	0	0.0%
	93	19.6%	55	12.4%	79	17.3%	63	15.4%	58	14.9%
Business & Public Management										
Accounting	9	1.9%	6	1.4%	5	1.1%	10	2.5%	6	1.6%
Applied Management	0	0.0%	0	0.0%	0	0.0%	0	0.0%	0	0.0%
Business Admin./Mgmt.	88	18.6%	85	19.2%	83	18.4%	119	29.6%	75	20.4%
Economics	0	0.0%	0	0.0%	1	0.0%	0	0.0%	0	0.0%
E-Commerce	1	0.2%	1	0.2%	0	0.0%	0	0.0%	0	0.0%
Health Administration*	9	1.9%	6	1.4%	5	1.1%	2	0.5%	7	1.9%
Organizational Management*	67	14.1%	72	16.3%	63	13.9%	79	19.7%	84	22.8%
Public Administration*	14	3.0%	15	3.4%	16	3.5%	10	2.5%	30	8.2%
	188	39.7%	185	41.9%	173	38.1%	220	54.7%	202	54.9%
Education & Organizational Leadership										
Child Development	63	13.3%	96	21.7%	105	23.2%	41	10.2%	47	12.8%
Liberal Studies	129	27.2%	100	22.6%	92	20.4%	76	18.9%	59	16.0%
Multiple Subject	0	0.0%	4	0.9%	1	0.2%	0	0.0%	0	0.0%
Single Subject	0	0.0%	2	0.5%	1	0.2%	0	0.0%	1	0.3%
	192	40.5%	202	45.7%	199	44.0%	117	29.1%	107	29.1%
College not Assigned										
Major not declared	1	0.2%	0	0.0%	1	0.2%	2	0.5%	1	0.3%
Grand Total All Students	474	100%	442	100%	452	100%	402	100%	368	99%

Source: Institutional Research Annual Census on November 15.

B-15: Application, Acceptance, and Enrollment Statistics for the College of Law*



Fall	Applied	Acceptance		Enrolled	Yield Rate
		Accepted	Rate		
2000	120	89	74%	37	42%
2001	147	70	48%	36	51%
2002	297	163	55%	54	33%
2003	619	342	55%	104	30%
2004	591	281	48%	80	28%
2005	469	263	56%	78	30%
2006	383	256	67%	85	33%
2007	934	435	47%	114	26%
2008	1494	631	42%	140	22%

* Does not include students at the former San Fernando Valley Campus.

Source: Admissions Office, ULV College of Law; Institutional Research Annual Census on November 15; Institutional Research Admission Census on October 15..

**B-16: New Main Campus Masters Students by Major/Credential
Fall 2004 - Fall 2008**

Major	Fall 2004		Fall 2005		Fall 2006		Fall 2007		Fall 2008	
College of Arts & Sciences										
Counseling (Concentration/Special Emphasis)	10	2.5%	4	1.1%	9	2.8%	10	2.6%	2	0.5%
Marriage & Family Therapy (MFT)	27	6.7%	25	6.6%	15	4.7%	21	5.6%	21	5.6%
Student Self-Designed Major		0.0%	0	0.0%	0	0.0%	0	0.0%	1	0.3%
	37	9.1%	29	7.7%	24	7.5%	31	8.2%	24	6.4%
College of Business & Public Management										
Business Administration	73	18.0%	86	22.7%	95	29.5%	92	24.3%	121	32.3%
Business Information Technology	0	0.0%	0	0.0%	0	0.0%	2	0.5%	0	0.0%
Business Organizational Management	0	0.0%	0	0.0%	1	0.3%	0	0.0%	0	0.0%
Gerontology	9	2.2%	5	1.3%	5	1.6%	7	1.9%	4	1.1%
Health Services Administration	7	1.7%	5	1.3%	8	2.5%	11	2.9%	14	3.7%
Leadership & Management	11	2.7%	16	4.2%	11	3.4%	16	4.2%	28	7.5%
Public Administration	12	3.0%	14	3.7%	15	4.7%	21	5.6%	19	5.1%
	112	27.7%	126	33.2%	135	41.9%	149	39.4%	186	49.6%
College of Education & Organizational Leadership										
Child Development	4	1.0%	12	3.2%	8	2.5%	4	1.1%	8	2.1%
Child Life	8	2.0%	12	3.2%	10	3.1%	19	5.0%	11	2.9%
Educational Management	7	1.7%	5	1.3%	4	1.2%	4	1.1%	4	1.1%
Multiple Subject (Credential)	44	10.9%	61	16.1%	32	9.9%	44	11.6%	34	9.1%
Preliminary Administrative Services (Credential)	6	1.5%	1	0.3%	2	0.6%	0	0.0%	2	0.5%
Pupil Personnel Services (Credential)	0	0.0%	1	0.3%	0	0.0%	0	0.0%	4	1.1%
Reading	7	1.7%	8	2.1%	6	1.9%	6	1.6%	13	3.5%
School/Educational Counseling	20	4.9%	18	4.7%	26	8.1%	40	10.6%	32	8.5%
Single Subject (Credential)	37	9.1%	36	9.5%	31	9.6%	26	6.9%	22	5.9%
Special Education	6	1.5%	2	0.5%	3	0.9%	11	2.9%	6	1.6%
Special Emphasis	117	28.9%	68	17.9%	41	12.7%	42	11.1%	28	7.5%
	256	63.2%	224	59.1%	163	50.6%	196	51.9%	164	43.7%
Major not Declared	0	0.0%	0	0.0%	0	0.0%	2	0.0%	1	0.0%
Total Masters Majors	405	100%	379	100%	322	100%	378	99%	375	100%

**B- 17: New Doctoral Students by Major/Credential at All ULV Campuses
Fall 2003 - Fall 2007**

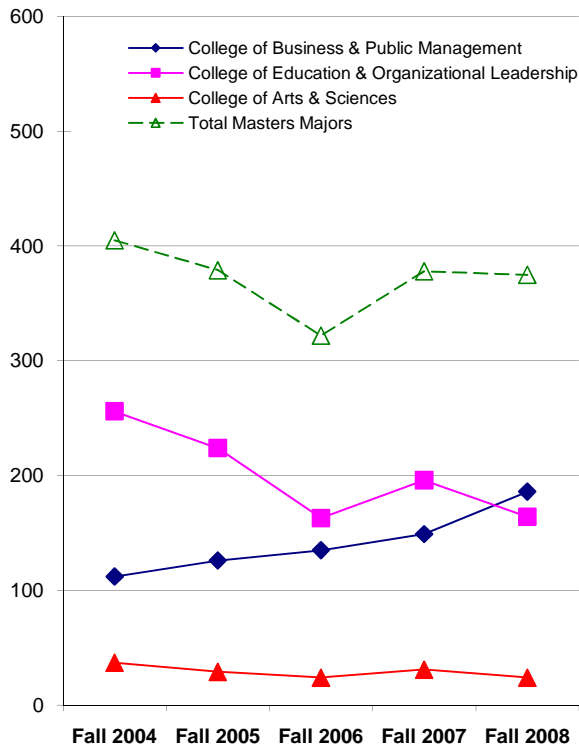
Major	Fall 2004		Fall 2005		Fall 2006		Fall 2007		Fall 2008	
Clinical-Community Psychology (PsyD)	18	21.2%	18	25.7%	13	22.0%	21	23.6%	21	27.3%
Educational/Organizational Leadership/Management (EdD)	48	56.5%	32	45.7%	23	39.0%	50	56.2%	30	39.0%
Professional Administrative Services (Credential)	0	0.0%	0	0.0%	2	3.4%	0	0.0%	1	1.3%
Public Administration (DPA)	17	20.0%	20	28.6%	21	35.6%	18	20.2%	25	32.5%
	83	97.6%	70	100.0%	59	100.0%	89	100.0%	77	100.0%
Major not Declared	2	2.4%	0	0.0%	0	0.0%	0	0.0%	0	0.0%
Total Doctoral Majors	85	100%	70	100%	59	100%	89	100%	77	100%

Source: Institutional Research Annual Census on November 15.

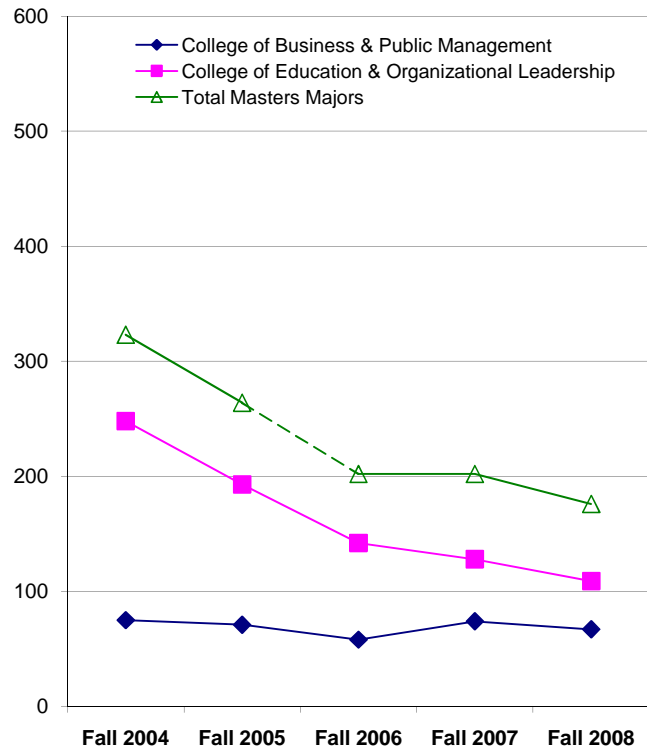
**B-18: New RCA Masters Students by Major/Credential
Fall 2004 - Fall 2008**

Major	Fall 2004	Fall 2005	Fall 2006	Fall 2007	Fall 2008
College of Business & Public Management					
Business Administration	62	63	49	55	50
Business Organizational Management	8	5	6	5	1
Health Services Administration	0	0	0	0	3
Leadership & Management	4	1	0	12	13
Public Administration	1	2	3	2	0
	75	71	58	74	67
	23.2%	26.9%	28.7%	36.6%	38.1%
College of Education & Organizational Leadership					
Child Development	11	22	0	0	0
Educational Management	39	29	20	7	6
Multiple Subject (Credential)	22	24	27	24	20
Preliminary Administrative Services (Credential)	13	2	2	0	1
Reading	11	2	0	0	0
School/Educational Counseling	60	54	53	68	42
Single Subject (Credential)	27	16	8	11	8
Special Education	1	4	3	1	5
Special Emphasis	39	39	29	17	27
Special Emphasis: Advanced Teaching Methods	25	1	0	0	0
	248	193	142	128	109
	76.8%	73.1%	70.3%	63.4%	61.9%
Major not Declared	0	0	2	0	0
	0.0%	0.0%	1.0%	0.0%	0.0%
Total Masters Majors	323	264	202	202	176
	100%	100%	100%	100%	100%

**New Main Campus Master Level Students
Fall 2004 - Fall 2008**



**New RCA Master Level Students
Fall 2004 - Fall 2008**



Source: Institutional Research Annual Census on November 15.