

**B-3: New Main Campus Traditional-Age Students by Gender  
Fall 2004 - Fall 2008**

**New First-Time Freshmen**

Gender	Fall 2004		Fall 2005		Fall 2006		Fall 2007		Fall 2008	
Male	123	30.5%	106	30.1%	111	34.8%	116	34.5%	133	44.0%
Female	280	69.5%	246	69.9%	208	65.2%	220	65.5%	169	56.0%
<b>Total</b>	<b>403</b>	<b>100.0%</b>	<b>352</b>	<b>100.0%</b>	<b>319</b>	<b>100.0%</b>	<b>336</b>	<b>100.0%</b>	<b>302</b>	<b>100.0%</b>

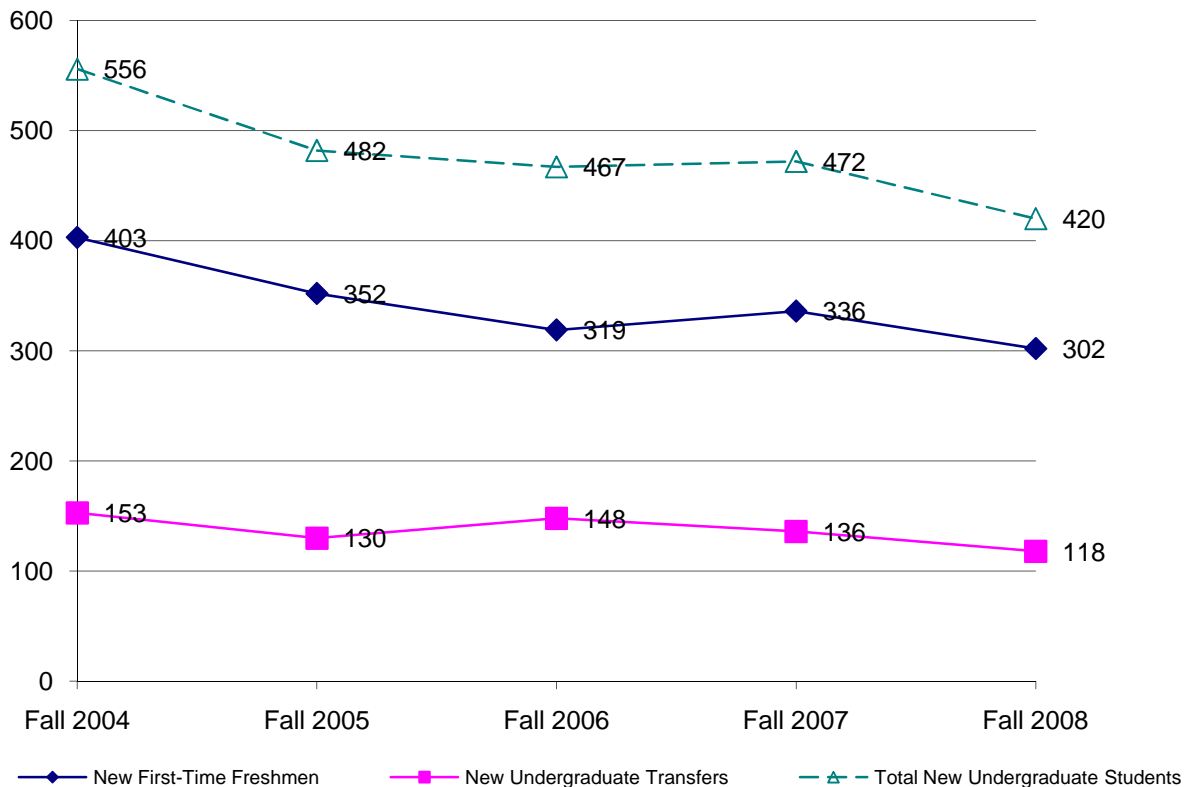
**New Undergraduate Transfers**

Male	80	52.3%	56	43.1%	74	50.0%	62	45.6%	54	45.8%
Female	73	47.7%	74	56.9%	74	50.0%	74	54.4%	64	54.2%
<b>Total</b>	<b>153</b>	<b>100.0%</b>	<b>130</b>	<b>100.0%</b>	<b>148</b>	<b>100.0%</b>	<b>136</b>	<b>100.0%</b>	<b>118</b>	<b>100.0%</b>

**Total New Undergraduate Students**

Male	203	36.5%	162	33.6%	185	39.6%	178	37.7%	187	44.5%
Female	353	63.5%	320	66.4%	282	60.4%	294	62.3%	233	55.5%
<b>Total New Students</b>	<b>556</b>	<b>100%</b>	<b>482</b>	<b>100%</b>	<b>467</b>	<b>100%</b>	<b>472</b>	<b>100%</b>	<b>420</b>	<b>100%</b>

**New Main Campus Undergraduate Enrollment (Fall 2004 - Fall 2008)**



Source: Fall 2002-Fall 2005, Institutional Research Admission Census on October 15; Fall 2006 and after, Institutional Research Annual Census on November 15 of each year.