



Knowledge • Service • Vision

Fact Book

2001 – 2005

Compiled by the Office of Institutional Research, University of La Verne

Table of Contents

Student Profile

Unduplicated Student Headcount by Campus/Program	1
Unduplicated Undergraduate Student Headcount by Major	2
Unduplicated Graduate Student Headcount by Major	3
Student Registration by Campus/Program	4
Student FTE by Campus/Program	5
Undergraduate Student FTE by Major	6
Graduate Student FTE by Major	7
Percentage of Total Student FTE by Campus/Program and by College	8
Student Ethnicity and Gender	9
Student Classification and Enrollment Status	10
Admission Statistics of Main Campus First-Time Traditional-Age Freshmen	11-12
Application, Acceptance, and Enrollment Statistics for the College of Law	13
International Student Profile	14

New Traditional-Age Student Profile

New Traditional-Age Student Enrollment	15
Ethnicity of New Traditional-Age Students	16
New Traditional-Age Freshman SAT Scores	17
New Traditional-Age Freshmen by Major	18
New Traditional-Age Transfers by Major	19
New Traditional-Age Students by Geographic Region	20-21
Entrance GPA of New Traditional-Age Students	22

Performance Profile

Student GPA by Level	23
Retention Rates for First-Time Traditional-Age Freshmen	24
Graduation Rates for Traditional-Age Undergraduate Students	24
Conferred Degrees for All Students by Type and by College	25
Conferred Bachelors Degrees	26
Conferred Graduate Degrees	27

Faculty and Staff Profile

Gender and Ethnicity	28
Rank of Full-Time Faculty	29
Highest Degrees of Full-Time Faculty	30
Tenure Status of Full-Time Faculty	31
Years of Service of Full-Time Faculty	32
Staff Gender, Ethnicity, and Appointment by Position	33

Finance & Financial Aid Profile

Financial Aid for Traditional-Age Students	34
Fiscal Year Finances	35-36

STUDENT PROFILE

All statistics are based on data from ULV's census on November 15 for each year specified, unless otherwise noted.

**Unduplicated Student Headcount by Campus/Program
Fall 2001 - Fall 2005**

Main Campus Programs	Fall 2001		Fall 2002		Fall 2003		Fall 2004		Fall 2005	
Main Campus Undergraduate	1424	17.2%	1439	18.8%	1396	16.8%	1655	19.9%	1721	20.7%
Main Campus Graduate	1238	15.0%	1408	18.4%	1431	17.3%	1560	18.7%	1505	18.1%
Bakersfield Credential	97	1.2%	85	1.1%	91	1.1%	85	1.0%	134	1.6%
DPA	111	1.3%	111	1.4%	106	1.3%	111	1.3%	108	1.3%
EdD	335	4.0%	351	4.6%	377	4.5%	405	4.9%	340	4.1%
PASC	42	0.5%	62	0.8%	12	0.1%	1	0.0%	2	0.0%
Law*	294	3.6%	127	1.7%	195	2.4%	221	2.7%	255	3.1%
	3541	42.8%	3583	46.8%	3608	43.5%	4038	48.5%	4065	48.8%
Regional Campus Administration (RCA)										
CAPA	804	9.7%	785	10.2%	787	9.5%	839	10.1%	817	9.8%
Education**	731	8.8%	936	12.2%	527	6.4%	545	6.5%	574	6.9%
ULV Online	7	0.1%	24	0.3%	52	0.6%	104	1.2%	162	1.9%
Teacher Credential (RCA Ed.)	123	1.5%	106	1.4%	135	1.6%	158	1.9%	143	1.7%
	1665	20.1%	1851	24.2%	1501	18.1%	1646	19.8%	1696	20.4%
Professional Development Centers										
Central Coast	53	0.6%	62	0.8%	95	1.1%	101	1.2%	124	1.5%
High Desert Victorville	0	0.0%	0	0.0%	85	1.0%	147	1.8%	145	1.7%
Inland Empire	386	4.7%	393	5.1%	330	4.0%	293	3.5%	284	3.4%
Kern County/Bakersfield	166	2.0%	179	2.3%	191	2.3%	165	2.0%	168	2.0%
Orange County	482	5.8%	542	7.1%	481	5.8%	414	5.0%	386	4.6%
San Fernando Valley	475	5.7%	475	6.2%	412	5.0%	439	5.3%	395	4.7%
Ventura County	179	2.2%	154	2.0%	144	1.7%	173	2.1%	179	2.2%
	1741	21.0%	1805	23.6%	1738	21.0%	1732	20.8%	1681	20.2%
Residence Centers										
Eielson/Ft. Wainwright	35	0.4%	19	0.2%	5	0.1%	0	0.0%	0	0.0%
Elmendorf	106	1.3%	100	1.3%	51	0.6%	0	0.0%	0	0.0%
North Island	3	0.0%	0	0.0%	0	0.0%	0	0.0%	0	0.0%
Point Mugu	131	1.6%	185	2.4%	244	2.9%	308	3.7%	266	3.2%
Vandenberg	87	1.1%	77	1.0%	96	1.2%	73	0.9%	62	0.7%
	362	4.4%	381	5.0%	396	4.8%	381	4.6%	328	3.9%
Other Programs										
Ecumenical Centers (ABTC/ECBCS)	46	0.6%	40	0.5%	40	0.5%	45	0.5%	50	0.6%
EPIC	55	0.7%	0	0.0%	36****	0.4%	34	0.4%	28	0.3%
	101	1.2%	40	0.5%	76	0.9%	79	0.9%	78	0.9%
Special Programs										
Cal Poly CLAD	0	0.0%	0	0.0%	62	0.7%	93	1.1%	92	1.1%
Professional Development/Travel Learning	0	0.0%	0	0.0%	297	3.6%	356	4.3%	375	4.5%
	0	0.0%	0	0.0%	359	4.3%	449	5.4%	467	5.6%
Overseas Campuses/Programs										
Athens***	826****	10.0%	0	0.0%	608****	7.3%	0	0.0%	0	0.0%
	826	10.0%	0	0.0%	608	7.3%	0	0.0%	0	0.0%
Campus not Designated	36	0.4%	1	0.0%	2	0.0%	0	0.0%	9	0.1%
Enrollment Grand Total	8272	100.0%	7661	100.0%	8288	100.0%	8325	100.0%	8324	100.0%

* The Fall 2001 number for law in *Fact Book 2001-2005* includes two law campuses (La Verne and Encino), which changes the way that previous Fact Books reported.

** Fall 2001 and 2002 Education numbers include Travel Learning

*** Athens Campus was closed after Summer 2004 and its students thereafter are classified under "Main Campus" since *Fact Book 2001-2005*.

**** End of Term enrollment figures; census day figures unavailable.

Source: Enrollment Management/Undergraduate Admissions

**Unduplicated Undergraduate Headcount by Major at all ULV Campuses
Fall 2001 - Fall 2005**

Major	Fall 2001		Fall 2002		Fall 2003		Fall 2004		Fall 2005	
College of Arts & Sciences										
Athletic Training	0	0.0%	11	0.3%	18	0.5%	30	0.7%	43	1.0%
Anthropology	15	0.3%	9	0.2%	8	0.2%	10	0.2%	9	0.2%
Art	30	0.7%	20	0.5%	25	0.6%	32	0.7%	28	0.6%
Art History	0	0.0%	1	0.0%	1	0.0%	4	0.1%	5	0.1%
Behavioral Science	42	0.9%	50	1.3%	46	1.2%	58	1.3%	35	0.8%
Biology	65	1.4%	67	1.7%	58	1.5%	84	1.9%	96	2.2%
Broadcasting	41	0.9%	38	1.0%	39	1.0%	37	0.8%	46	1.1%
Chemistry	21	0.5%	30	0.8%	23	0.6%	24	0.6%	28	0.6%
Communications	68	1.5%	70	1.8%	75	1.9%	85	2.0%	84	1.9%
Comparative Literature	0	0.0%	0	0.0%	1	0.0%	1	0.0%	0	0.0%
Computer Science & Engineering	123	2.7%	78	2.0%	68	1.8%	56	1.3%	45	1.0%
Criminology	118	2.6%	122	3.2%	139	3.6%	196	4.5%	180	4.1%
English	86	1.9%	66	1.7%	62	1.6%	78	1.8%	76	1.7%
Environmental Biology	5	0.1%	4	0.1%	2	0.1%	4	0.1%	1	0.0%
Environmental Management	1	0.0%	0	0.0%	0	0.0%	1	0.0%	1	0.0%
French	0	0.0%	1	0.0%	1	0.0%	0	0.0%	1	0.0%
General Studies (AA)	0	0.0%	0	0.0%	1	0.0%	0	0.0%	12	0.3%
German	0	0.0%	0	0.0%	0	0.0%	1	0.0%	0	0.0%
History	30	0.7%	31	0.8%	21	0.5%	43	1.0%	40	0.9%
International Business & Language	18	0.4%	24	0.6%	21	0.5%	15	0.3%	22	0.5%
International Studies	5	0.1%	5	0.1%	2	0.1%	5	0.1%	5	0.1%
Journalism	38	0.8%	31	0.8%	34	0.9%	42	1.0%	43	1.0%
Legal Studies/Paralegal Studies*	62	1.4%	57	1.5%	58	1.5%	83	1.9%	92	2.1%
Liberal Arts	1	0.0%	4	0.1%	7	0.2%	15	0.3%	18	0.4%
Mathematics	28	0.6%	15	0.4%	25	0.6%	25	0.6%	23	0.5%
Movement & Sports Science/Phys Ed	95	2.1%	81	2.1%	74	1.9%	66	1.5%	66	1.5%
Music	15	0.3%	14	0.4%	14	0.4%	16	0.4%	13	0.3%
Natural History/Science	2	0.0%	0	0.0%	0	0.0%	2	0.0%	0	0.0%
Philosophy	4	0.1%	8	0.2%	9	0.2%	10	0.2%	6	0.1%
Physics	2	0.0%	1	0.0%	5	0.1%	5	0.1%	7	0.2%
Political Science	61	1.4%	49	1.3%	42	1.1%	55	1.3%	52	1.2%
Psychology	260	5.8%	206	5.4%	223	5.8%	263	6.0%	248	5.7%
Religion	21	0.5%	14	0.4%	12	0.3%	8	0.2%	5	0.1%
Religion & Philosophy	6	0.1%	3	0.1%	6	0.2%	5	0.1%	1	0.0%
Social Science	26	0.6%	24	0.6%	21	0.5%	22	0.5%	18	0.4%
Sociology	45	1.0%	48	1.2%	51	1.3%	70	1.6%	79	1.8%
Spanish	7	0.2%	6	0.2%	7	0.2%	7	0.2%	14	0.3%
Speech Communication	0	0.0%	7	0.2%	9	0.2%	12	0.3%	22	0.5%
Theatre Arts	10	0.2%	19	0.5%	16	0.4%	22	0.5%	28	0.6%
Student Designed Majors	0	0.0%	0	0.0%	1	0.0%	3	0.1%	2	0.0%
	1351	29.9%	1214	31.6%	1225	31.8%	1495	34.3%	1494	34.2%
College of Business & Public Management										
Accounting	97	2.1%	74	1.9%	64	1.7%	61	1.4%	66	1.5%
Business Administration	1210	26.8%	964	25.1%	848	22.0%	884	20.3%	854	19.6%
Business Management	5	0.1%	3	0.1%	1	0.0%	0	0.0%	4	0.1%
E-Commerce	0	0.0%	1	0.0%	1	0.0%	4	0.1%	11	0.3%
Economics	52	1.2%	7	0.2%	8	0.2%	7	0.2%	9	0.2%
Health Administration*	118	2.6%	98	2.6%	81	2.1%	68	1.6%	51	1.2%
Marketing*	101	2.2%	20	0.5%	15	0.4%	19	0.4%	20	0.5%
Organizational Management*	513	11.4%	549	14.3%	593	15.4%	577	13.3%	541	12.4%
Public Administration*	87	1.9%	74	1.9%	85	2.2%	92	2.1%	90	2.1%
Student Designed Majors	0	0.0%	0	0.0%	5	0.1%	7	0.2%	3	0.1%
	2183	48.3%	1790	46.6%	1696	44.0%	1712	39.3%	1649	37.7%
College of Education & Organizational Leadership										
Child Development	102	2.3%	150	3.9%	240	6.2%	374	8.6%	426	9.8%
Diversified Education/Liberal Studies	425	9.4%	509	13.2%	473	12.3%	468	10.7%	543	12.4%
Multiple Subject (Credential)	0	0.0%	0	0.0%	0	0.0%	12	0.3%	7	0.2%
Single Subject (Credential)	0	0.0%	0	0.0%	0	0.0%	1	0.0%	3	0.1%
	527	11.7%	659	17.1%	713	18.5%	855	19.6%	979	22.4%
Major not declared	456	10.1%	180	4.7%	223	5.8%	292	6.7%	245	5.6%
Total Undergraduate Majors	4517	100.0%	3843	100.0%	3857	100.0%	4354	100.0%	4367	100.0%

* Fall 2001 and 2002: Legal Studies, Health Administration, Organizational Management, and Public Administration were within the School of Public Affairs & Health Administration.
Source: Enrollment Management/Undergraduate Admissions

**Unduplicated Graduate Student Headcount by Major/Credential at All ULV Campuses
Fall 2001 - Fall 2005**

Major	Fall 2001	Fall 2002	Fall 2003	Fall 2004	Fall 2005
College of Arts & Sciences					
Counseling (Concentration/Special Emphasis)	61 2.1%	73 2.3%	2 0.1%	25 0.8%	29 0.9%
Marriage & Family Therapy (MFT)	38 1.3%	40 1.3%	46 1.5%	76 2.4%	80 2.5%
Psychology	1 0.0%	0 0.0%	1 0.0%	0 0.0%	0 0.0%
	100 3.4%	113 3.6%	49 1.6%	101 3.3%	109 3.4%
College of Business & Public Management					
Accounting	0 0.0%	0 0.0%	0 0.0%	0 0.0%	1 0.0%
Business Administration	753 25.5%	740 23.6%	725 24.2%	668 21.5%	697 21.9%
Business Information Technology	4 0.1%	8 0.3%	12 0.4%	12 0.4%	5 0.2%
Business Organizational Management	139 4.7%	112 3.6%	67 2.2%	36 1.2%	27 0.8%
Gerontology*	21 0.7%	28 0.9%	29 1.0%	32 1.0%	34 1.1%
Health Services Administration*	58 2.0%	57 1.8%	56 1.9%	55 1.8%	40 1.3%
International Administration*	2 0.1%	0 0.0%	0 0.0%	0 0.0%	0 0.0%
Leadership & Management**	50 1.7%	98 3.1%	99 3.3%	94 3.0%	84 2.6%
Public Administration*	28 0.9%	35 1.1%	39 1.3%	51 1.6%	61 1.9%
	1055 35.8%	1078 34.4%	1027 34.3%	948 30.5%	949 29.8%
College of Education & Organizational Leadership					
Child Development	10 0.3%	29 0.9%	49 1.6%	45 1.4%	76 2.4%
Child Life	15 0.5%	16 0.5%	19 0.6%	21 0.7%	25 0.8%
Educational Management	176 6.0%	206 6.6%	183 6.1%	175 5.6%	179 5.6%
Multiple Subject (Credential)	317 10.8%	337 10.8%	320 10.7%	244 7.9%	269 8.4%
Preliminary Administrative Services (Credential)	74 2.5%	43 1.4%	42 1.4%	35 1.1%	34 1.1%
Pupil Personnel Services (Credential)	73 2.5%	23 0.7%	7 0.2%	6 0.2%	3 0.1%
Reading	19 0.6%	55 1.8%	60 2.0%	82 2.6%	63 2.0%
School/Educational Counseling	449 15.2%	506 16.1%	302 10.1%	310 10.0%	363 11.4%
Single Subject (Credential)	183 6.2%	174 5.6%	215 7.2%	180 5.8%	165 5.2%
Special Education	0 0.0%	10 0.3%	27 0.9%	41 1.3%	42 1.3%
Special Emphasis	179 6.1%	191 6.1%	213 7.1%	413 13.3%	346 10.9%
Special Emphasis: Advanced Teaching Methods	42 1.4%	55 1.8%	24 0.8%	40 1.3%	44 1.4%
Student Designed Majors	2 0.1%	1 0.0%	0 0.0%	0 0.0%	0 0.0%
	1539 52.2%	1646 52.5%	1461 48.8%	1592 51.3%	1609 50.5%
Major not Declared	254 8.6%	297 9.5%	456 15.2%	463 14.9%	517 16.2%
Total Graduate Students	2948 100%	3134 100%	2993 100%	3104 100%	3184 100%

*Fall 2001-Fall 2002: Gerontology, Health Services Administration, International Administration, Organizational Management, and Public Administration were within the School of Public Affairs & Health Administration

** Leadership & Management was organized under the College of Education & Organizational Leadership in Fact Book publications before *Fact Book 2001-2005*.

Source: Enrollment Management/Undergraduate Admissions

**Unduplicated Doctoral Student Headcount by Major/Credential at All ULV Campuses
Fall 2001 - Fall 2005**

Major	Fall 2001	Fall 2002	Fall 2003	Fall 2004	Fall 2005
Clinical-Community Psychology (PsyD)	42 8.1%	50 9.0%	52 9.5%	60 10.4%	67 12.9%
Educational/Organizational Leadership/Management (EdD)	322 62.4%	349 62.9%	356 65.1%	373 64.6%	329 63.5%
Professional Administrative Services (Credential)	40 7.8%	45 8.1%	12 2.2%	1 0.2%	2 0.4%
Public Administration (DPA)	111 21.5%	111 20.0%	105 19.2%	111 19.2%	109 21.0%
	515 99.8%	555 100.0%	525 96.0%	545 94.5%	507 97.9%
Major not Declared	1 0.2%	0 0.0%	22 4.0%	32 5.5%	11 2.1%
Total Doctoral Majors	516 100%	555 100%	547 100%	577 100%	518 100%

Source: Enrollment Management/Undergraduate Admissions

**Unduplicated First Professional Student Headcount by Major at All ULV Campuses
Fall 2001 - Fall 2005**

Major	Fall 2001	Fall 2002	Fall 2003	Fall 2004	Fall 2005
Juris Doctor (JD)*	294 100.0%	127 100.0%	195 100.0%	221 100.0%	255 100.0%
Total First Professional Majors	294 100.0%	127 100.0%	195 100.0%	221 100.0%	255 100.0%

* The Fall 2001 number for law in *Fact Book 2001-2005* includes two law campuses (La Verne and Encino), which changes the way that previous Fact Books reported.

Student Registrations by Campus/Program*
Fall 2001 - Fall 2005

Main Campus Programs	Fall 2001		Fall 2002		Fall 2003		Fall 2004		Fall 2005	
Main Campus Undergraduate	1989	21.7%	2118	24.1%	2027	22.2%	2959	29.7%	2903	29.1%
Main Campus Graduate	1206	13.2%	1521	17.3%	1454	15.9%	1660	16.7%	1641	16.4%
Bakersfield Credential	106	1.2%	105	1.2%	101	1.1%	154	1.5%	154	1.5%
DPA	111	1.2%	113	1.3%	106	1.2%	111	1.1%	98	1.0%
EdD	323	3.5%	359	4.1%	376	4.1%	407	4.1%	349	3.5%
PASC	60	0.7%	64	0.7%	24	0.3%	13	0.1%	21	0.2%
Law**	289	3.2%	127	1.4%	196	2.1%	237	2.4%	329	3.3%
	4084	44.6%	4407	50.2%	4284	46.9%	5541	55.7%	5495	55.0%
Regional Campus Administration (RCA)										
CAPA	882	9.6%	858	9.8%	788	8.6%	809	8.1%	793	7.9%
Education***	716	7.8%	928	10.6%	525	5.7%	541	5.4%	589	5.9%
ULV Online	344	3.8%	318	3.6%	307	3.4%	393	4.0%	492	4.9%
Teacher Credential (RCA Ed.)	130	1.4%	120	1.4%	138	1.5%	160	1.6%	147	1.5%
	2072	22.6%	2224	25.4%	1758	19.2%	1903	19.1%	2021	20.2%
Professional Development Centers										
Central Coast	44	0.5%	59	0.7%	81	0.9%	98	1.0%	119	1.2%
High Desert Victorville	0	0.0%	0	0.0%	107	1.2%	144	1.4%	142	1.4%
Inland Empire	354	3.9%	364	4.2%	314	3.4%	289	2.9%	259	2.6%
Kern County/Bakersfield	149	1.6%	158	1.8%	176	1.9%	126	1.3%	155	1.6%
Orange County	493	5.4%	528	6.0%	437	4.8%	365	3.7%	343	3.4%
San Fernando Valley	473	5.2%	458	5.2%	391	4.3%	408	4.1%	364	3.6%
Ventura County	172	1.9%	149	1.7%	138	1.5%	158	1.6%	161	1.6%
	1685	18.4%	1716	19.6%	1644	18.0%	1588	16.0%	1543	15.5%
Residence Centers										
Eielson/Ft. Wainwright	53	0.6%	20	0.2%	6	0.1%	2	0.0%	0	0.0%
Elmendorf	107	1.2%	99	1.1%	50	0.5%	0	0.0%	0	0.0%
Point Mugu	133	1.5%	180	2.1%	242	2.6%	300	3.0%	296	3.0%
Vandenberg	93	1.0%	77	0.9%	94	1.0%	68	0.7%	60	0.6%
	386	4.2%	376	4.3%	392	4.3%	370	3.7%	356	3.6%
Other Programs										
Ecumenical Centers (ABTC/ECBCS)	48	0.5%	48	0.5%	44	0.5%	46	0.5%	54	0.5%
EPIC	55	0.6%	0	0.0%	36****	0.4%	34	0.3%	31	0.3%
	103	1.1%	48	0.5%	80	0.9%	80	0.8%	85	0.9%
Special Programs										
Cal Poly CLAD	0	0.0%	0	0.0%	69	0.8%	94	0.9%	92	0.9%
Professional Development/Travel Learning	0	0.0%	0	0.0%	298	3.3%	372	3.7%	395	4.0%
	0	0.0%	0	0.0%	367	4.0%	466	4.7%	487	4.9%
Overseas Campuses/Programs										
Athens*****	832**	9.1%	0	0.0%	610**	6.7%	0	0.0%	0	0.0%
	832	9.1%	0	0.0%	610	6.7%	0	0.0%	0	0.0%
Enrollment Grand Total	9162	100.0%	8771	100.0%	9135	100.0%	9948	100.0%	9987	100.0%

* The numbers in this page are based on student course campus, where students actually take courses

** The Fall 2001 number for law in *Fact Book 2001-2005* includes two law campuses (La Verne and Encino), which changes the way that previous Fact Books reported.

*** Fall 2001 and 2002 Education numbers include Travel Learning.

**** End of Term enrollment figures; census day figures unavailable.

***** Athens Campus was closed after Summer 2004 and its students thereafter are classified under "Main Campus" since *Fact Book 2001-2005*.

Source: Enrollment Management/Undergraduate Admissions (based on census day files, except where noted).

**Student Full-Time Equivalent (FTE) by Campus/Program
Fall 2001 - Fall 2005***

Main Campus Programs	Fall 2001		Fall 2002		Fall 2003		Fall 2004		Fall 2005		IPEDS 2004-05	
Main Campus Undergraduate	1699.6	27.5%	1404.4	23.7%	1379.8	23.4%	1603.5	25.4%	1697.7	27.0%	1741.0	29.5%
Main Campus Graduate	875.9	14.2%	1050.7	17.8%	1235.9	20.9%	1275.3	20.2%	1141.0	18.1%	1055.7	17.9%
Bakersfield Credential	94.9	1.5%	77.0	1.3%	75.2	1.3%	69.7	1.1%	100.8	1.6%	95.7	1.6%
DPA	58.7	0.9%	65.0	1.1%	57.0	1.0%	67.3	1.1%	59.3	0.9%	46.0	0.8%
EdD	219.6	3.6%	226.3	3.8%	254.3	4.3%	267.9	4.2%	213.5	3.4%	174.9	3.0%
PASC	14.9	0.2%	41.5	0.7%	6.7	0.1%	0.8	0.0%	0.7	0.0%	8.2	0.1%
Law**	342.7	5.5%	161.2	2.7%	266.9	4.5%	306.2	4.8%	364.0	5.8%	242.5	4.1%
	3306.3	53.5%	3026.1	51.2%	3275.8	55.5%	3590.7	56.8%	3577.0	56.8%	3364.0	57.0%
Regional Campus Administration (RCA)												
CAPA	605.1	9.8%	497.5	8.4%	482.7	8.2%	518.5	8.2%	505.2	8.0%	596.5	10.1%
Education*	603.7	9.8%	689.7	11.7%	402.8	6.8%	401.7	6.4%	448.8	7.1%	368.0	6.2%
ULV Online	2.0	0.0%	10.5	0.2%	43.0	0.7%	83.8	1.3%	116.5	1.8%	88.6	1.5%
Teacher Credential (RCA Ed.)	160.7	2.6%	135.5	2.3%	160.0	2.7%	165.3	2.6%	165.6	2.6%	112.2	1.9%
	1371.5	22.2%	1333.2	22.5%	1088.5	18.4%	1169.3	18.5%	1236.1	19.6%	1165.3	19.7%
Professional Development Centers												
Central Coast	35.4	0.6%	43.7	0.7%	66.8	1.1%	83.7	1.3%	94.9	1.5%	72.0	1.2%
High Desert Victorville	0.0	0.0%	0.0	0.0%	50.9	0.9%	102.8	1.6%	107.9	1.7%	84.7	1.4%
Inland Empire	242.0	3.9%	274.0	4.6%	231.8	3.9%	202.0	3.2%	191.0	3.0%	176.1	3.0%
Kern County/Bakersfield	126.3	2.0%	145.2	2.5%	157.9	2.7%	144.3	2.3%	143.1	2.3%	117.8	2.0%
Orange County	291.5	4.7%	332.5	5.6%	310.6	5.3%	246.3	3.9%	239.0	3.8%	231.1	3.9%
San Fernando Valley	316.2	5.1%	315.3	5.3%	265.0	4.5%	286.4	4.5%	265.0	4.2%	249.4	4.2%
Ventura County	128.9	2.1%	110.5	1.9%	105.5	1.8%	124.0	2.0%	124.5	2.0%	104.1	1.8%
	1140.3	18.4%	1221.2	20.6%	1188.5	20.1%	1189.5	18.8%	1165.4	18.5%	1035.2	17.5%
Residence Centers												
Eielson/Ft. Wainwright	31.5	0.5%	15.5	0.3%	5.0	0.1%	0.0	0.0%	0.0	0.0%	0.0	0.0%
Elmendorf	84.8	1.4%	79.2	1.3%	47.7	0.8%	0.0	0.0%	0.0	0.0%	0.3	0.0%
North Island	2.0	0.0%	0.0	0.0%	0.0	0.0%	0.0	0.0%	0.0	0.0%	0.0	0.0%
Point Mugu	103.8	1.7%	143.7	2.4%	192.4	3.3%	267.0	4.2%	218.8	3.5%	213.5	3.6%
Vandenberg	59.3	1.0%	58.5	1.0%	73.9	1.3%	57.7	0.9%	48.5	0.8%	44.8	0.8%
	281.4	4.6%	296.9	5.0%	319.0	5.4%	324.7	5.1%	267.3	4.2%	258.6	4.4%
Other Programs												
Ecumenical Centers (ABTC/ECBCS)	34.2	0.6%	36.6	0.6%	32.7	0.6%	28.4	0.4%	31.9	0.5%	26.5	0.4%
EPIC***	30.5	0.5%	0.0	0.0%	0.3	0.0%	16.8	0.3%	15.2	0.2%	25.0	0.4%
	64.7	1.0%	36.6	0.6%	33.0	0.6%	45.2	0.7%	47.1	0.7%	51.5	0.9%
Special Programs												
Cal Poly CLAD	0.0	0.0%	0.0	0.0%	34.0	0.6%	44.0	0.7%	46.6	0.7%	52.6	0.9%
Professional Development/Travel Learning	0.0	0.0%	80.9	1.4%	252.5	4.3%	308.2	4.9%	374.0	5.9%	430.2	7.3%
	0.0	0.0%	80.9	1.4%	286.5	4.9%	352.2	5.6%	420.6	6.7%	482.8	8.2%
Overseas Campuses/Programs												
Athens***	2.0	0.0%	0.3	0.0%	1.5	0.0%	0.0	0.0%	0.0	0.0%	0.0	0.0%
	0.0	0.0%	0.3	0.0%	1.5	0.0%	0.0	0.0%	0.0	0.0%	0.0	0.0%
Campus not Designated	18.4	0.3%	0.3	0.0%	0.0	0.0%	0.0	0.0%	6.2	0.1%	26.3	0.4%
Enrollment Grand Total	6182.6	100.0%	5914.6	100.0%	5906.3	100.0%	6319.4	100.0%	6299.1	100.0%	5900.9	100.0%

*Fact Book 2001-2005 provides numbers of two types of FTE - ULV defined FTE for accreditation and IPEDS (Integrated Postsecondary Education Data System) defined FTE. For the purpose of accreditation, ULV defines FTE differently for undergraduate students and graduate students across different campuses. ULV defined FTE is calculated as follows:

A. Undergraduate students: A Main Campus undergraduate student who takes 12 credits or more is calculated as 1, and otherwise, term credit hours divided by 15; Athens' students, term credit hours divided by 8; CAPA students, term credit hours divided by 12, and other regional campuses students, term credit hours divided by 8; Bakersfield Credential students, credit hours divided by 8; and CalPolyCLAD students, semester hours divided by 9.

B. Graduate students: Main Campus (MBA, MPA, MHA) students, term credit hours divided by 6; Main Campus PsyD, MA Psy) students, semester ours divided by 9; PASC students, Graduate (Tier 1), term hours divided by 9, and Doctoral (Tier 2), term hours divided by 6; DPA, EdD, and Bakersfield Credential students, term credit hours divided by 9; Law students, term hours divided by 9; Regional Campus students, term hours divided by 6; Athens' students, term hours divided by 6; CalPoly CLAD students, semester hours

IPEDS FTE (Full Time Equivalent) is a measurement equal to one student enrolled full time for one academic year. ULV's academic year includes Fall, Winter, Interterm, Spring, and Summer, and it calculates as "graduate credit hours are divided by 24 and undergraduate credit hours are divided by 30".

A third type of FTE, as defined by Common Data Set (CDS), is available online at <http://www.ulv.edu/cds/>. CDS reports only main campus undergraduate enrollment and calculates total FTE as the sum of total full-time students (usually 12 credits for undergraduate and 9 credit for graduate, or university specified credits for full-time students) plus 1/3

** The Fall 2001 number for law includes two law campuses (La Verne and Encino).

*** Accurate census data were not available 2001 through 2005. The Athens Campus was closed after Summer 2004 and its students thereafter are classified under "Main Campus" since Fact Book 2001-2005.

Source: Enrollment Management/Undergraduate Admissions

Undergraduate Student Full-Time Equivalent (FTE) by Major at all ULV Campuses*
Fall 2001 - Fall 2005

Major	Fall 2001		Fall 2002		Fall 2003		Fall 2004		Fall 2005		IPEDS 2004-05	
College of Arts & Sciences												
Athletic Training	0.0	0.0%	11.0	0.4%	17.5	0.6%	29.7	0.9%	42.3	1.2%	33.2	0.9%
Anthropology	16.8	0.5%	7.7	0.3%	6.1	0.2%	8.3	0.2%	7.2	0.2%	9.2	0.3%
Art	27.6	0.8%	18.3	0.6%	22.4	0.7%	28.5	0.8%	25.0	0.7%	29.3	0.8%
Art History	0.0	0.0%	0.8	0.0%	1.2	0.0%	2.2	0.1%	2.6	0.1%	2.8	0.1%
Behavioral Science	35.1	1.0%	34.0	1.1%	34.1	1.1%	42.7	1.2%	24.0	0.7%	42.0	1.2%
Biology	80.3	2.4%	65.5	2.2%	55.7	1.8%	79.3	2.3%	93.0	2.7%	88.7	2.5%
Broadcasting	49.1	1.5%	38.1	1.3%	37.3	1.2%	34.8	1.0%	43.9	1.3%	44.0	1.3%
Chemistry	25.8	0.8%	29.9	1.0%	21.4	0.7%	22.1	0.6%	26.6	0.8%	26.8	0.8%
Communications	80.9	2.4%	70.5	2.3%	70.3	2.3%	83.3	2.4%	81.1	2.3%	84.3	2.4%
Comparative Literature	0.0	0.0%	0.0	0.0%	1.0	0.0%	1.0	0.0%	0.0	0.0%	1.1	0.0%
Computer Science & Engineering	83.8	2.5%	68.4	2.3%	59.7	2.0%	47.5	1.4%	46.0	1.3%	52.9	1.5%
Criminology	125.9	3.8%	108.0	3.6%	122.3	4.0%	169.5	4.9%	156.2	4.5%	159.8	4.6%
English	65.3	1.9%	56.6	1.9%	51.1	1.7%	63.7	1.8%	61.0	1.7%	69.6	2.0%
Environmental Biology	5.8	0.2%	4.0	0.1%	2.0	0.1%	3.4	0.1%	1.0	0.0%	1.8	0.1%
Environmental Management	0.3	0.0%	0.0	0.0%	0.0	0.0%	1.0	0.0%	1.0	0.0%	1.2	0.0%
French	0.0	0.0%	1.0	0.0%	1.0	0.0%	0.0	0.0%	0.9	0.0%	0.4	0.0%
General Studies (AA)	0.0	0.0%	0.0	0.0%	0.3	0.0%	0.0	0.0%	2.8	0.1%	0.0	0.0%
German	0.0	0.0%	0.0	0.0%	0.0	0.0%	1.0	0.0%	0.0	0.0%	0.4	0.0%
History	32.7	1.0%	28.5	0.9%	17.5	0.6%	39.9	1.2%	35.8	1.0%	38.5	1.1%
International Business & Language	20.9	0.6%	23.5	0.8%	21.0	0.7%	15.0	0.4%	22.0	0.6%	17.6	0.5%
International Studies	5.0	0.1%	4.7	0.2%	2.0	0.1%	5.0	0.1%	4.8	0.1%	6.0	0.2%
Journalism	45.5	1.4%	29.4	1.0%	31.6	1.0%	40.1	1.2%	42.3	1.2%	43.8	1.3%
Legal Studies/Paralegal Studies*	52.8	1.6%	42.9	1.4%	40.9	1.3%	62.5	1.8%	69.8	2.0%	64.1	1.8%
Liberal Arts	1.3	0.0%	3.6	0.1%	6.5	0.2%	14.5	0.4%	17.2	0.5%	17.3	0.5%
Mathematics	26.1	0.8%	12.4	0.4%	22.3	0.7%	23.7	0.7%	21.0	0.6%	22.8	0.7%
Movement & Sports Science/Phys Ed	110.1	3.3%	75.7	2.5%	67.3	2.2%	62.7	1.8%	62.4	1.8%	69.5	2.0%
Music	16.6	0.5%	13.7	0.5%	12.9	0.4%	14.7	0.4%	10.3	0.3%	14.6	0.4%
Natural History/Science	1.3	0.0%	0.0	0.0%	0.0	0.0%	2.0	0.1%	0.0	0.0%	1.7	0.0%
Philosophy	4.7	0.1%	7.5	0.2%	8.8	0.3%	10.0	0.3%	5.5	0.2%	10.9	0.3%
Physics	1.6	0.0%	1.0	0.0%	4.3	0.1%	5.0	0.1%	6.3	0.2%	5.9	0.2%
Political Science	58.4	1.7%	44.7	1.5%	43.1	1.4%	50.4	1.5%	50.5	1.4%	52.8	1.5%
Psychology	206.6	6.2%	179.0	5.9%	198.2	6.5%	230.6	6.7%	213.4	6.1%	233.3	6.7%
Religion	16.3	0.5%	12.5	0.4%	7.9	0.3%	6.9	0.2%	3.4	0.1%	6.0	0.2%
Religion & Philosophy	4.2	0.1%	1.3	0.0%	4.8	0.2%	3.5	0.1%	1.0	0.0%	2.9	0.1%
Social Science	24.7	0.7%	22.1	0.7%	17.4	0.6%	19.0	0.5%	16.6	0.5%	21.4	0.6%
Sociology	37.8	1.1%	32.3	1.1%	38.9	1.3%	52.1	1.5%	58.3	1.7%	59.9	1.7%
Spanish	7.2	0.2%	5.5	0.2%	7.7	0.3%	6.1	0.2%	13.6	0.4%	6.4	0.2%
Speech Communication	0.0	0.0%	7.0	0.2%	9.0	0.3%	11.5	0.3%	21.1	0.6%	15.5	0.4%
Theatre Arts	12.4	0.4%	18.3	0.6%	22.0	0.7%	21.0	0.6%	27.3	0.8%	25.6	0.7%
Student Designed Majors	0.0	0.0%	0.0	0.0%	1.0	0.0%	2.4	0.1%	1.3	0.0%	2.1	0.1%
	1282.9	38.2%	1079.4	35.7%	1088.5	35.6%	1316.6	38.0%	1318.5	37.6%	1386.1	39.6%
College of Business & Public Management												
Accounting	83.6	2.5%	62.6	2.1%	53.3	1.7%	50.5	1.5%	53.1	1.5%	61.1	1.7%
Business Administration	789.9	23.5%	693.2	22.9%	634.3	20.7%	673.5	19.4%	663.0	18.9%	638.9	18.2%
Business Management	0.3	0.0%	3.0	0.1%	0.2	0.0%	0.0	0.0%	2.0	0.1%	0.0	0.0%
E-Commerce	0.0	0.0%	1.0	0.0%	1.0	0.0%	3.1	0.1%	9.9	0.3%	4.8	0.1%
Economics	10.1	0.3%	7.1	0.2%	7.5	0.2%	6.1	0.2%	8.4	0.2%	7.1	0.2%
Health Administration/Management*	75.3	2.2%	63.8	2.1%	52.2	1.7%	45.1	1.3%	34.4	1.0%	29.6	0.8%
Marketing	33.0	1.0%	20.0	0.7%	15.0	0.5%	19.0	0.5%	19.3	0.6%	19.3	0.6%
Organizational Management*	348.9	10.4%	363.4	12.0%	388.7	12.7%	392.0	11.3%	365.7	10.4%	380.4	10.9%
Public Administration*	59.8	1.8%	50.1	1.7%	58.5	1.9%	60.3	1.7%	59.8	1.7%	54.8	1.6%
Student Designed Majors	0.0	0.0%	0.0	0.0%	2.5	0.1%	4.0	0.1%	1.5	0.0%	1.9	0.1%
	1400.9	41.8%	1264.2	41.8%	1213.2	39.7%	1253.6	36.2%	1217.1	34.7%	1197.9	34.2%
College of Education & Organizational Leadership												
Child Development	75.7	2.3%	84.6	2.8%	146.4	4.8%	231.8	6.7%	258.0	7.4%	243.1	6.9%
Diversified Education/Liberal Studies	419.5	12.5%	442.7	14.6%	416.3	13.6%	410.3	11.8%	490.8	14.0%	426.7	12.2%
Multiple Subject (Credential)	0.0	0.0%	0.0	0.0%	0.0	0.0%	7.0	0.2%	6.5	0.2%	5.2	0.1%
Single Subject (Credential)	0.0	0.0%	0.0	0.0%	0.0	0.0%	0.7	0.0%	3.1	0.1%	1.1	0.0%
	495.2	14.8%	527.3	17.4%	562.7	18.4%	649.8	18.8%	758.4	21.6%	676.1	19.3%
Major not declared	175.2	5.2%	154.2	5.1%	192.9	6.3%	245.1	7.1%	214.9	6.1%	243.5	6.9%
Total Undergraduate Majors	3354.2	100.0%	3025.1	100.0%	3057.3	100.0%	3465.1	100.0%	3508.9	100.0%	3503.6	100.0%

* For explanation of FTE, see page 5.

Source: Enrollment Management/Undergraduate Admissions

Graduate Student Full-Time Equivalent (FTE) by Major/Credential at All ULV Campuses*
Fall 2001 - Fall 2005

Major	Fall 2001		Fall 2002		Fall 2003		Fall 2004		Fall 2005		IPEDS 2004-05	
College of Arts & Sciences												
Counseling (Concentration/Special Emphasis)	40.0	1.9%	57.9	2.4%	37.2	1.5%	17.8	0.7%	21.9	0.9%	17.7	0.8%
Counseling / Marriage & Family Therapy (MFT)	26.3	1.2%	30.0	1.2%	37.3	1.5%	56.3	2.3%	64.1	2.5%	55.0	2.4%
Psychology	0.0	0.0%	0.0	0.0%	0.9	0.0%	0.0	0.0%	0.0	0.0%	0.0	0.0%
	66.3	3.1%	87.9	3.6%	75.4	3.0%	74.1	3.0%	86.0	3.3%	72.7	3.1%
College of Business & Public Management												
Accounting	0.0	0.0%	0.0	0.0%	0.0	0.0%	0.0	0.0%	0.5	0.0%	0.5	0.0%
Business Administration	502.8	23.4%	502.7	20.6%	587.9	23.6%	535.8	21.4%	557.5	21.7%	437.8	18.8%
Business Information Technology	2.7	0.1%	5.6	0.2%	13.0	0.5%	12.5	0.5%	4.5	0.2%	6.5	0.3%
Business Organizational Management	112.0	5.2%	85.7	3.5%	55.5	2.2%	31.7	1.3%	22.2	0.9%	22.3	1.0%
Gerontology**	10.4	0.5%	14.8	0.6%	22.1	0.9%	25.7	1.0%	26.6	1.0%	23.3	1.0%
Health Services Administration/Management**	34.3	1.6%	34.5	1.4%	41.5	1.7%	38.7	1.5%	31.0	1.2%	24.3	1.0%
International Administration**	1.0	0.0%	0.0	0.0%	0.0	0.0%	0.0	0.0%	0.0	0.0%	0.0	0.0%
Leadership & Management	26.6	1.2%	54.3	2.2%	73.3	2.9%	62.0	2.5%	57.8	2.2%	52.3	2.2%
Public Administration**	13.7	0.6%	21.3	0.9%	39.5	1.6%	40.8	1.6%	49.5	1.9%	36.3	1.6%
	703.5	32.8%	718.9	29.5%	832.8	33.4%	747.2	29.9%	749.6	29.2%	603.3	25.9%
College of Education & Organizational Leadership												
Child Development	8.9	0.4%	21.2	0.9%	31.3	1.3%	25.5	1.0%	55.2	2.1%	27.0	1.2%
Child Life	13.1	0.6%	16.6	0.7%	19.5	0.8%	18.2	0.7%	27.9	1.1%	13.5	0.6%
Educational Management	148.6	6.9%	173.7	7.1%	158.0	6.3%	145.3	5.8%	149.9	5.8%	123.7	5.3%
Multiple Subject (Credential)	305.2	14.2%	333.7	13.7%	307.2	12.3%	217.4	8.7%	228.8	8.9%	193.6	8.3%
Preliminary Administrative Services (Credential)	43.0	2.0%	30.8	1.3%	34.8	1.4%	22.5	0.9%	24.2	0.9%	20.0	0.9%
Pupil Personnel Services (Credential)	43.6	2.0%	17.6	0.7%	4.3	0.2%	1.3	0.1%	2.9	0.1%	2.5	0.1%
Reading	9.1	0.4%	28.9	1.2%	33.8	1.4%	46.3	1.9%	31.2	1.2%	32.3	1.4%
School/Educational Counseling	379.8	17.7%	469.0	19.2%	213.8	8.6%	231.8	9.3%	271.7	10.6%	228.1	9.8%
Single Subject (Credential)	182.2	8.5%	174.1	7.1%	210.0	8.4%	147.6	5.9%	144.6	5.6%	126.1	5.4%
Special Education	0.0	0.0%	8.6	0.4%	19.1	0.8%	27.2	1.1%	27.0	1.1%	29.0	1.2%
Special Emphasis	102.6	4.8%	143.2	5.9%	183.8	7.4%	371.2	14.8%	270.1	10.5%	276.5	11.9%
Special Emphasis: Advanced Teaching Methods	33.5	1.6%	51.2	2.1%	23.5	0.9%	28.5	1.1%	47.8	1.9%	38.3	1.6%
Student Designed Majors	0.3	0.0%	0.3	0.0%	0.0	0.0%	0.0	0.0%	0.0	0.0%	0.0	0.0%
	1269.9	59.2%	1468.9	60.2%	1239.1	49.7%	1282.8	51.3%	1281.3	49.9%	1110.6	47.7%
Major not Declared	106.9	5.0%	163.7	6.7%	347.4	13.9%	398.0	15.9%	452.3	17.6%	539.3	23.2%
Total Graduate Students	2146.6	100.0%	2439.4	100.0%	2494.7	100.0%	2502.1	100.0%	2569.2	100.0%	2325.9	100.0%

* For explanation of FTE, see page 5.

**Fall 2001-Fall 2002: Gerontology, Health Services Administration, International Administration, Organizational Management, and Public Administration were within the School of Public Affairs & Health Administration

Source: Enrollment Management/Undergraduate Admissions

Doctoral Student FTE by Major/Credential at All ULV Campuses*
Fall 2000 - Fall 2005

Major	Fall 2001		Fall 2002		Fall 2003		Fall 2004		Fall 2005		IPEDS 2004-05	
Clinical-Community Psychology (PsyD)	51.7	15.0%	56.8	15.3%	56.3	15.0%	61.6	15.5%	66.2	19.4%	58.4	20.3%
Educational/Organizational Leadership/Management (EdD)	213.7	62.1%	223.3	60.3%	233.3	62.3%	236.2	59.4%	202.9	59.4%	155.4	54.0%
Professional Administrative Services (Credential)	20.2	5.9%	22.0	5.9%	6.7	1.8%	0.8	0.2%	1.0	0.3%	8.2	2.9%
Public Administration (DPA)	58.7	17.0%	65.0	17.6%	56.0	15.0%	67.3	16.9%	60.8	17.8%	46.0	16.0%
	344.3	100.0%	367.1	99.2%	352.3	94.1%	365.9	92.0%	331.0	96.9%	268.0	93.2%
Major not Declared	0.0	0.0%	3.0	0.8%	22.0	5.9%	31.7	8.0%	10.7	3.1%	19.6	6.8%
Total Doctoral Majors	344.3	100.0%	370.1	100.0%	374.3	100.0%	397.6	100.0%	341.7	100.0%	287.6	100.0%

* For explanation of FTE, see page 5.

First Professional Student FTE by Major at All ULV Campuses*
Fall 2000 - Fall 2005

Major	Fall 2001		Fall 2002		Fall 2003		Fall 2004		Fall 2005		IPEDS 2004-05	
Juris Doctor (JD)	340.0	100.0%	161.2	100.0%	266.9	100.0%	306.2	100.0%	364.0	100.0%	242.5	100.0%
Total First Professional Majors	340.0	100.0%	161.2	100.0%	266.9	100.0%	306.2	100.0%	364.0	100.0%	242.5	100.0%

* For explanation of FTE, see page 5.

**Percentage of Total Student FTE by Campus/Program and by College*
Fall 2001 - Fall 2005**

By Campus/Program**	Fall 2001	Fall 2002	Fall 2003	Fall 2004	Fall 2005
Main Campus Undergraduate	27.5%	23.7%	23.4%	25.4%	27.0%
Main Campus Graduate***	26.0%	27.4%	32.1%	31.4%	29.8%
CAPA	9.8%	8.4%	8.2%	8.2%	8.0%
Regional Campus Programs	35.4%	39.8%	35.8%	34.3%	34.3%
Others****	1.3%	0.6%	0.6%	0.7%	0.9%
	100.0%	100.0%	100.0%	100.0%	100.0%

By College*****	Fall 2001	Fall 2002	Fall 2003	Fall 2004	Fall 2005
College of Arts & Sciences	22.6%	20.4%	19.7%	21.8%	21.7%
College of Business & Public Management	35.0%	34.2%	33.9%	31.0%	29.9%
College of Education & Organizational Leadership	32.3%	37.4%	33.0%	32.5%	33.1%
College of Law	5.5%	2.6%	4.3%	5.0%	5.9%
Major not designed	4.6%	5.4%	9.1%	9.8%	9.5%
	100.0%	100.0%	100.0%	100.0%	100.0%

* For explanation of FTE, see page 5.

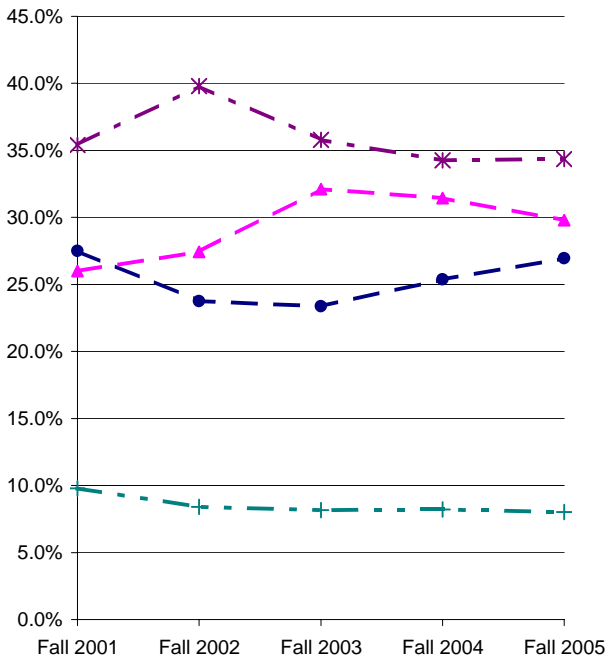
** The numbers of this table are calculated from the report of page 5.

*** This category includes Law, EdD, DPA, PASC, Bakersfield Credentials, and Cal Poly CLAD.

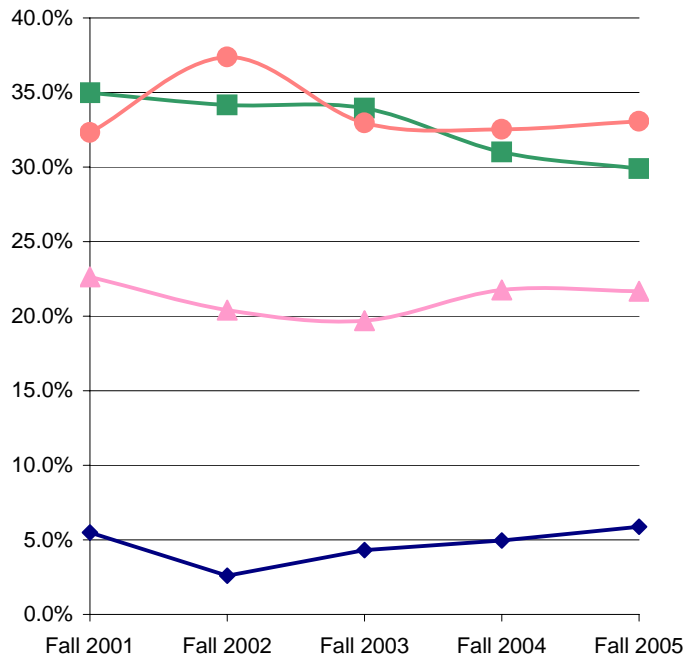
**** This category includes Other Programs, Special Programs, Oversea Campuses/Programs, and Campus-Not-Designed of page 5.

***** The numbers on this table were calculated from the reports of page 6 and page 7.

**Percentage of Total FTE by Campus/Program
Fall 2001 - Fall 2005**



**Percentage of Total FTE by College
Fall 2001 - Fall 2005**



● Main Campus Undergraduate
▲ Main Campus Graduate***
* Regional Campus Programs
+ CAPA

▲ College of Arts & Sciences
■ College of Business & Public Management
● College of Education & Organizational Leadership
◆ College of Law

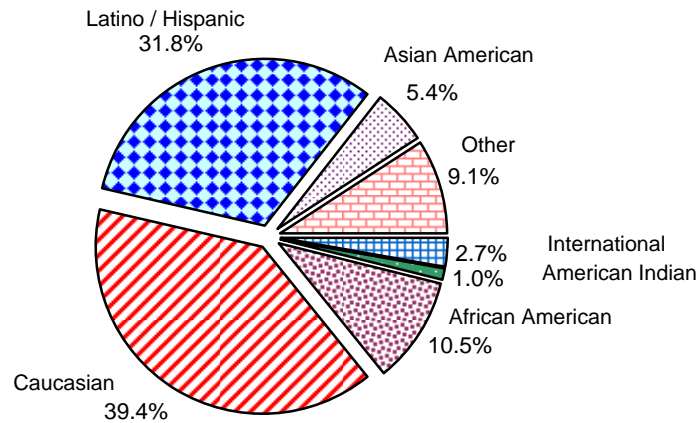
Ethnicity and Gender of All ULV Students Fall 2001 - Fall 2005

Ethnicity	Fall 2001		Fall 2002		Fall 2003		Fall 2004		Fall 2005	
American Indian / Alaska Native	86	1.2%	86	1.1%	61	0.8%	80	1.1%	77	1.0%
African American	790	10.7%	848	11.1%	814	10.7%	834	11.5%	789	10.5%
Caucasian	3467	46.8%	3346	43.7%	3169	41.5%	3139	43.4%	2975	39.4%
Latino / Hispanic	1774	24.0%	1939	25.3%	2002	26.2%	2318	32.0%	2399	31.8%
Asian American / Pacific Islander	376	5.1%	401	5.2%	403	5.3%	402	5.6%	409	5.4%
Other	721	9.7%	855	11.2%	1004	13.1%	291	4.0%	690	9.1%
International	190	2.6%	186	2.4%	189	2.5%	169	2.3%	204	2.7%
Total	7404	100%	7661	100%	7642	100%	7233	100%	7543	100%

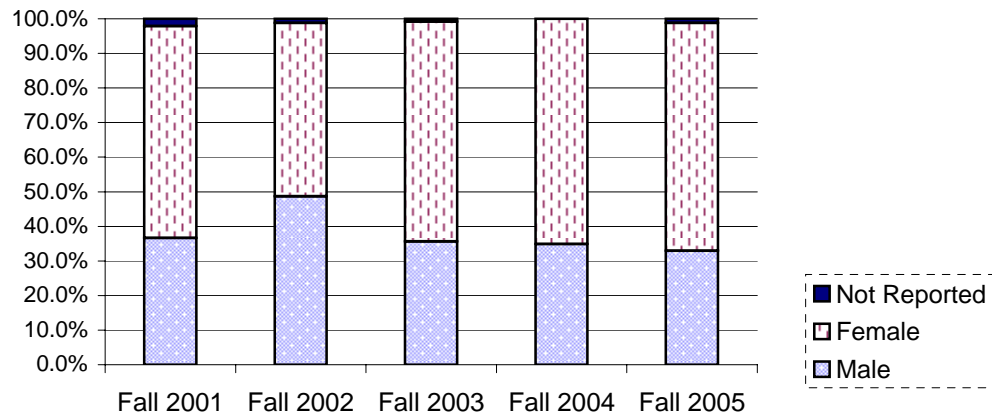
Gender	Fall 2001		Fall 2002		Fall 2003		Fall 2004		Fall 2005	
Male	2972	36.6%	3725	48.6%	2725	35.6%	2904	34.9%	2739	32.9%
Female	4963	61.2%	3845	50.2%	4857	63.5%	5421	65.1%	5487	65.9%
Not Reported	175	2.2%	91	1.2%	64	0.8%	0	0.0%	98	1.2%
Total	8110	100%	7661	100%	7646	100%	8325	100%	8324	100%

Source: Enrollment Management/Undergraduate Admissions

Ethnicity of ULV Students - Fall 2005



Gender of ULV Students Fall 2001- Fall 2005



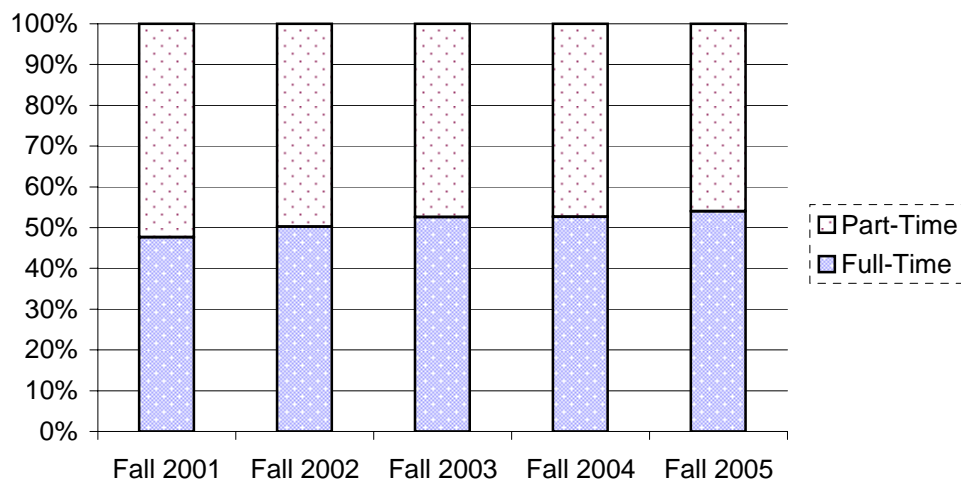
Classification and Enrollment Status of All ULV Students Fall 2001 - Fall 2005

Student Level	Fall 2001		Fall 2002		Fall 2003		Fall 2004		Fall 2005	
Freshman	1174	14.5%	874	11.4%	833	10.9%	942	11.3%	790	9.5%
Sophomore	756	9.3%	647	8.4%	662	8.7%	670	8.1%	690	8.3%
Junior	1068	13.2%	895	11.7%	989	12.9%	1123	13.5%	1098	13.2%
Senior	1518	18.7%	1427	18.6%	1385	18.1%	1623	19.5%	1789	21.5%
Graduate (Masters Level)	2949	36.4%	3134	40.9%	3034	39.7%	3165	38.0%	3184	38.3%
Doctoral	513	6.3%	557	7.3%	548	7.2%	577	6.9%	518	6.2%
First Professional	132	1.6%	127	1.7%	195	2.6%	221	2.7%	255	3.1%
Total	8110	100%	7661	100%	7646	100%	8321	100%	8324	100%

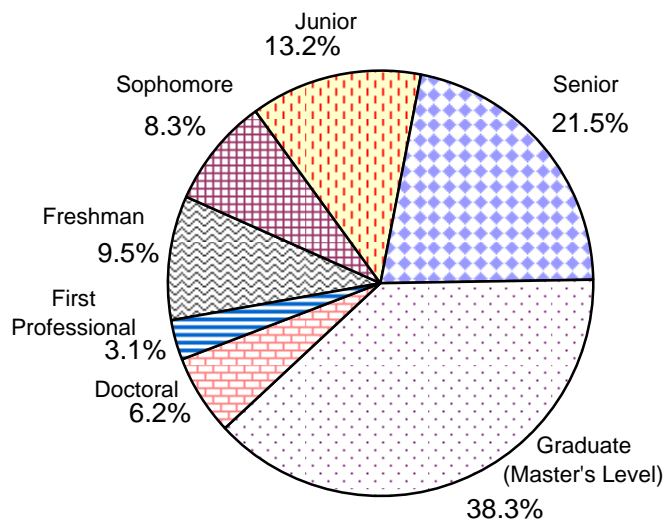
Enrollment Status	Fall 2001		Fall 2002		Fall 2003		Fall 2004		Fall 2005	
Full-Time	3867	47.7%	3846	50.2%	4020	52.6%	4385	52.7%	4492	54.0%
Part-Time	4243	52.3%	3815	49.8%	3626	47.4%	3940	47.3%	3832	46.0%
Total	8110	100%	7661	100%	7646	100%	8325	100%	8324	100%

Source: Enrollment Management/Undergraduate Admissions

Enrollment Status of ULV Students
Fall 2001-Fall 2005

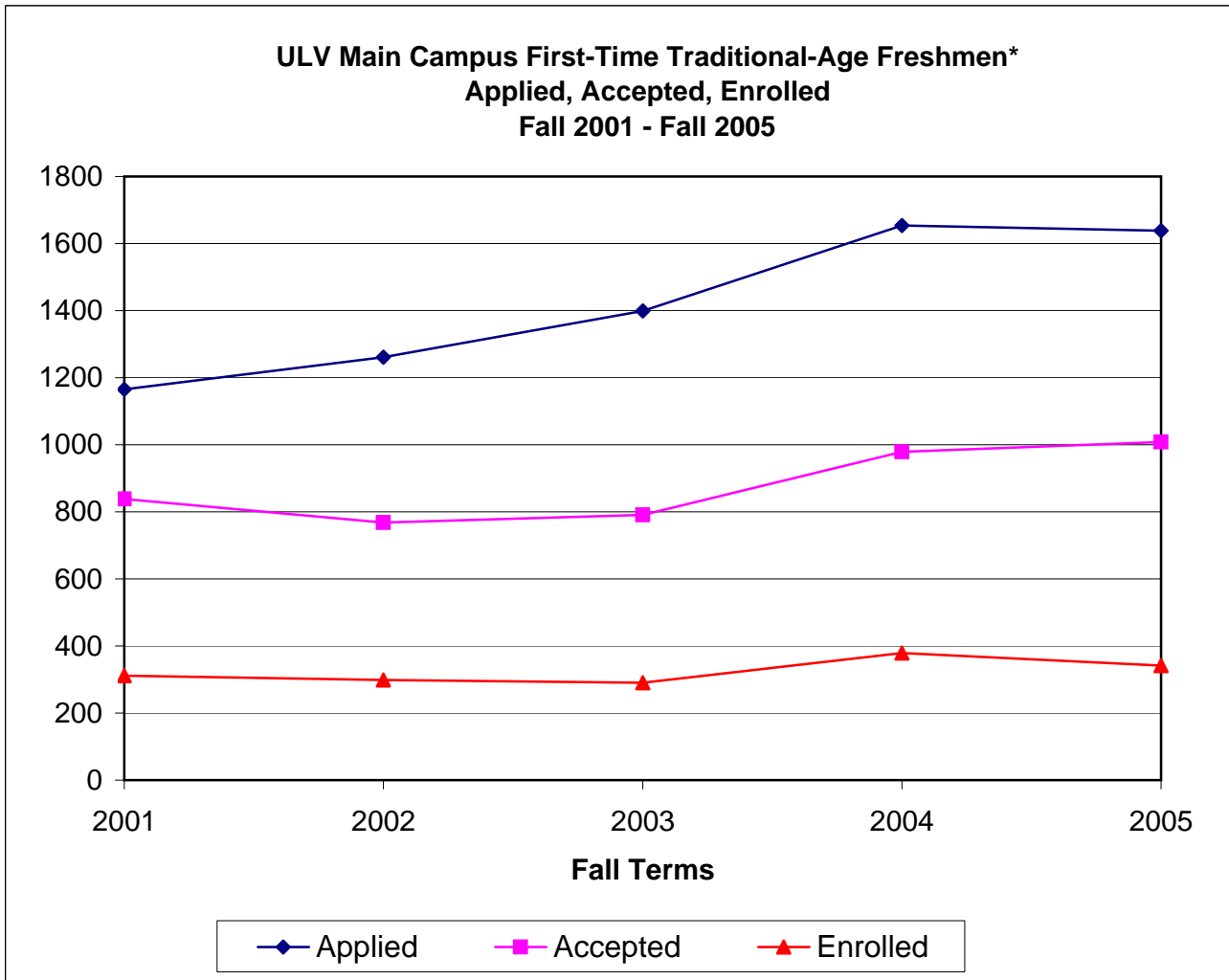


Level of ULV Students - Fall 2005



Admission Statistics for Main Campus First-Time Traditional-Age Freshmen*

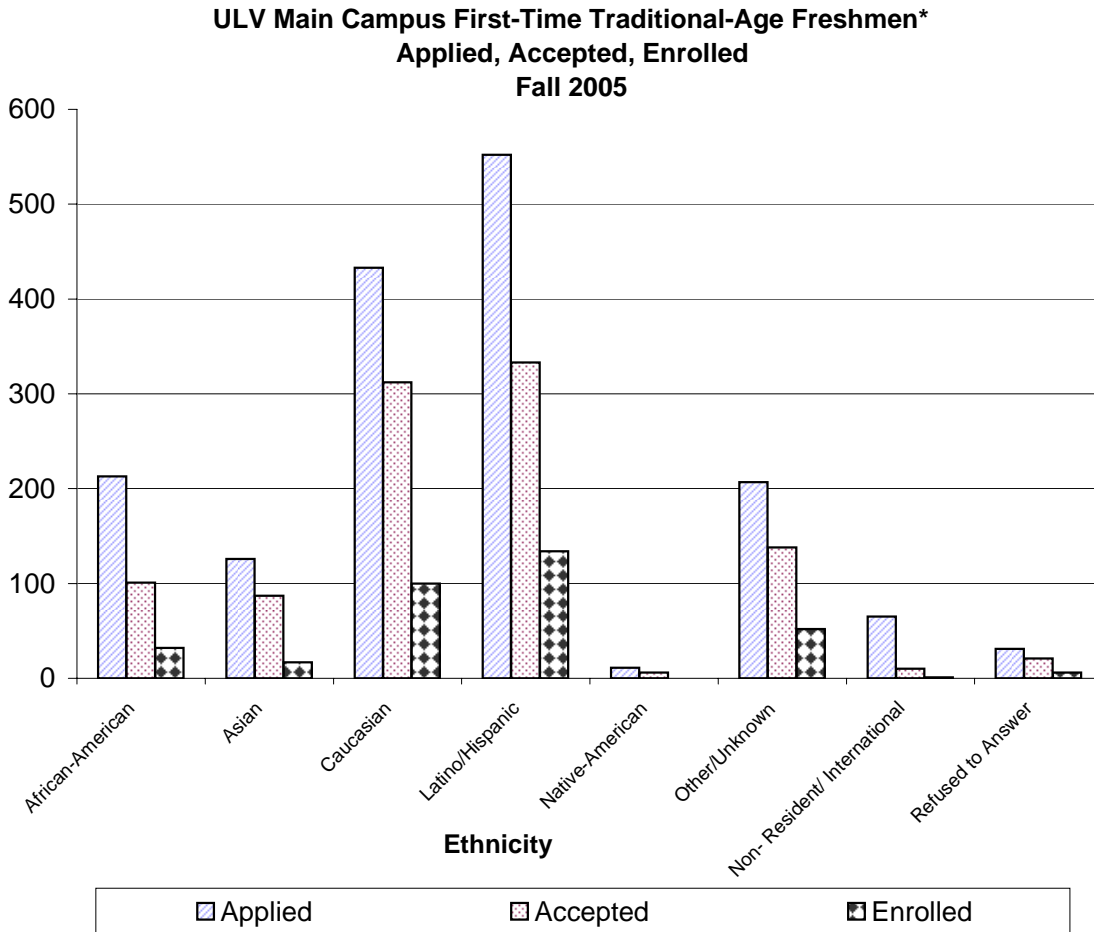
Application, Acceptance, and Enrollment Statistics Fall 2001 - Fall 2005



Fall	Applied	Accepted	Acceptance Rate	Enrolled	Yield Rate
2001	1165	838	72%	311	37%
2002	1261	768	61%	299	39%
2003	1399	791	57%	290	37%
2004	1654	979	59%	379	39%
2005	1638	1008	62%	342	34%

* Does not include Advanced Freshmen or CAPA/RCA
Source: Enrollment Management/Undergraduate Admissions

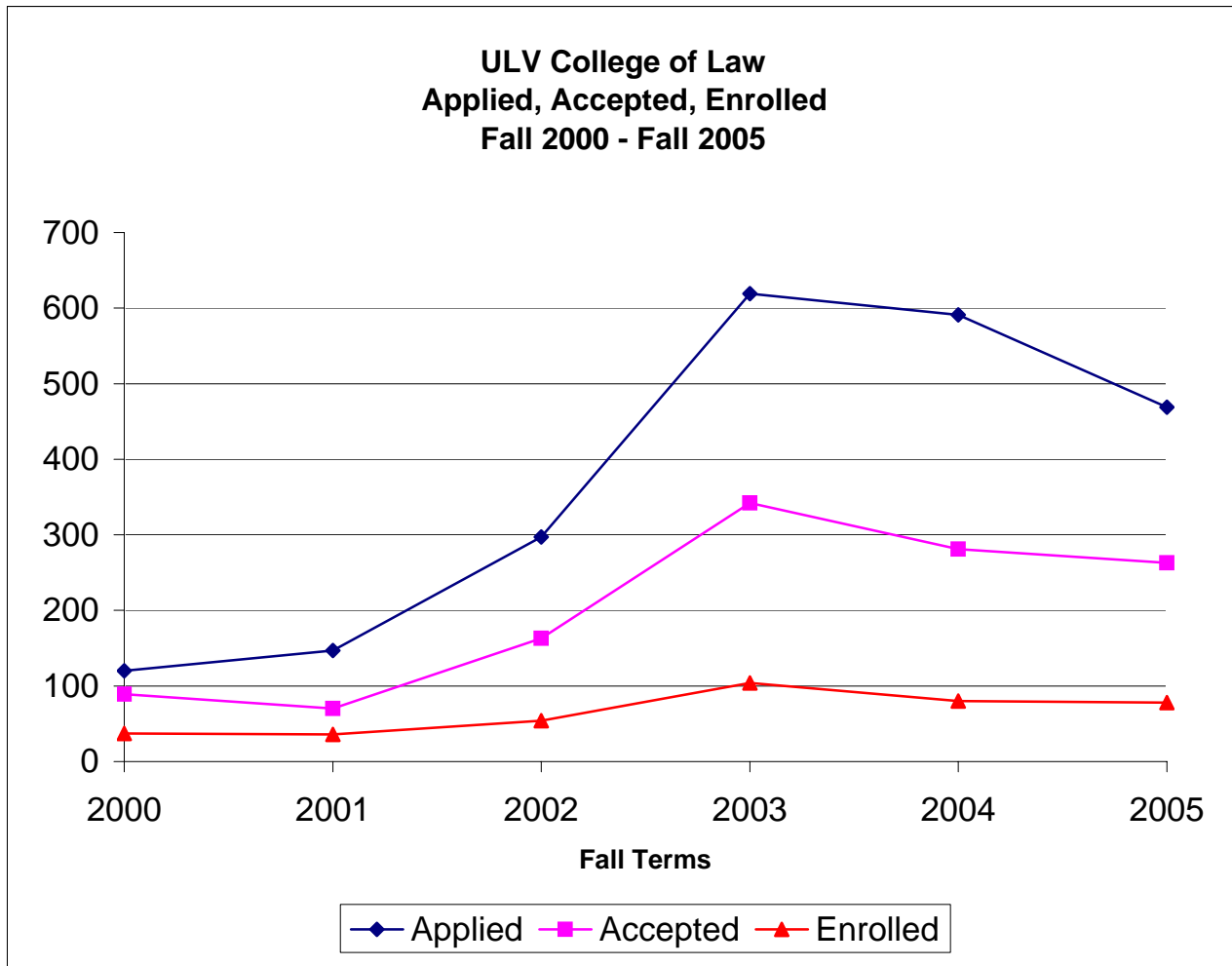
Application, Acceptance, and Enrollment Statistics by Ethnicity



Ethnicity	Yield Rate Fall 2001- Fall 2004				Fall 2005				
	2001	2002	2003	2004	Applied	Accepted	Enrolled	Acceptance Rate	Yield Rate
African-American	25%	28%	32%	33%	213	101	32	47%	32%
Asian	23%	22%	20%	17%	126	87	17	69%	20%
Caucasian	39%	39%	39%	40%	433	312	100	72%	32%
Latino/Hispanic	43%	44%	43%	44%	552	333	134	60%	40%
Native-American	22%	100%	50%	75%	11	6	0	55%	0%
Other/Unknown	38%	45%	30%	41%	207	138	52	67%	38%
Non- Resident/ International	-	-	-	0%	65	10	1	15%	10%
Refused to Answer	-	-	-	33%	31	21	6	68%	29%

Source: Enrollment Management/Undergraduate Admissions

Application, Acceptance, and Enrollment Statistics for the College of Law



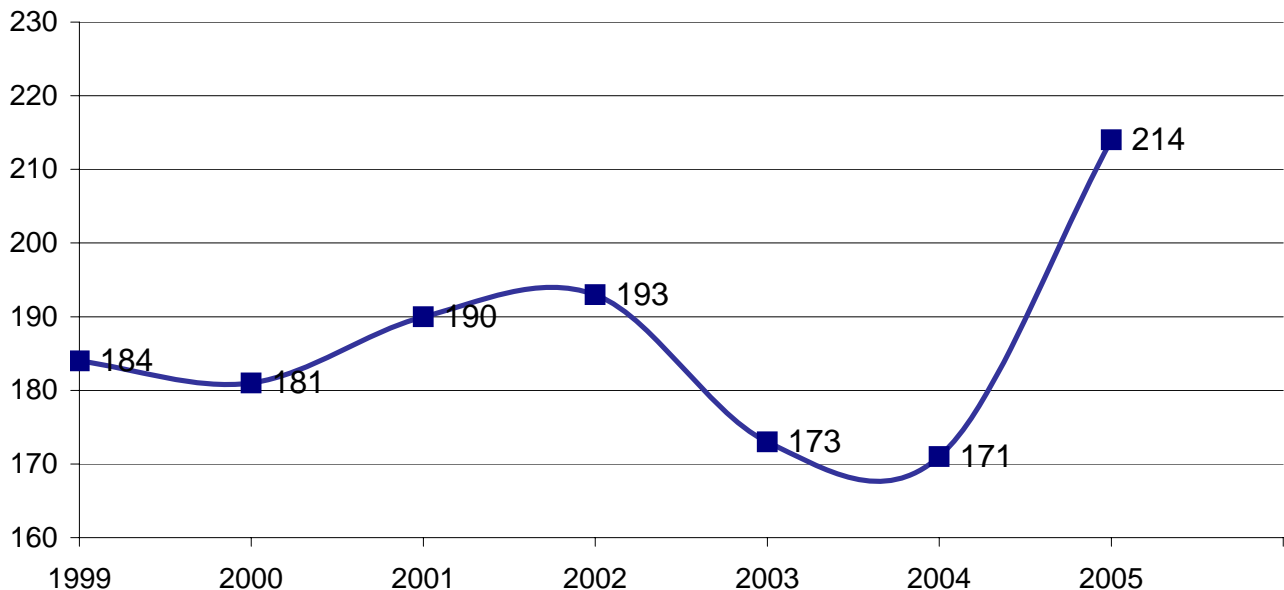
Fall	Applied	Acceptance		Enrolled	Yield Rate
		Accepted	Rate		
2000	120	89	74%	37	42%
2001	147	70	48%	36	51%
2002	297	163	55%	54	33%
2003	619	342	55%	104	30%
2004	591	281	48%	80	28%
2005	469	263	56%	78	30%

Source: Admissions Office, ULV College of Law

International Student Profile*: Fall 2001 - Fall 2005

	2001		2002		2003		2004		2005	
By Gender	Count	% Count	Count	% Count	Count	% Count	Count	% Count	Count	%
Male	96	50.5%	94	48.7%	80	46.2%	91	53.2%	103	48.1%
Female	94	49.5%	99	51.3%	93	53.8%	80	46.8%	111	51.9%
Grand Total	190	100.0%	193	100.0%	173	100.0%	171	100.0%	214	100.0%
By Student Level										
Undergraduate	30	15.8%	20	10.4%	14	8.1%	12	7.0%	48	22.4%
Masters	151	79.5%	165	85.5%	147	85.0%	143	83.6%	144	67.3%
Doctoral and Juris Doctor	9	4.7%	8	4.1%	12	6.9%	16	9.4%	22	10.3%
Grand Total	190	100.0%	193	100.0%	173	100.0%	171	100.0%	214	100.0%
By Leading Majors										
Business Administration									147	68.7%
Juris Doctor									12	5.6%
Public Administration (DPA)									10	4.7%
Other majors									45	21.0%
Grand Total									214	100.0%
By Countries with Largest Representation										
Taiwan	40	21.1%	41	21.2%	50	28.9%	56	32.7%	71	33.2%
Thailand	62	32.6%	72	37.3%	66	38.2%	53	31.0%	43	20.1%
Japan	13	6.8%	13	6.7%	8	4.6%	11	6.4%	12	5.6%
Greece	0	0.0%	0	0.0%	0	0.0%	0	0.0%	10	4.7%
Albania	0	0.0%	0	0.0%	0	0.0%	0	0.0%	10	4.7%
Canada	0	0.0%	3	1.6%	5	2.9%	7	4.1%	9	4.2%
China	19	10.0%	22	11.4%	12	6.9%	13	7.6%	8	3.7%
Other	56	29.5%	42	21.8%	32	18.5%	31	18.1%	51	23.8%
Grand Total	190	100.0%	193	100.0%	173	100.0%	171	100.0%	214	100.0%

**International Student Enrollment Profile
(Fall 1999- Fall 2005)**



Source: International Student Services

NEW TRADITIONAL- AGE STUDENT PROFILE

All statistics are based on data from ULV's census on November 15 for each year specified, unless otherwise noted.

**New Traditional-Age Student Enrollment
Fall 2001 - Fall 2005**

Traditional-Age Freshman Students

Gender	Fall 2001		Fall 2002		Fall 2003		Fall 2004		Fall 2005	
Male	115	36.1%	121	38.1%	100	33.0%	123	30.5%	106	30.1%
Female	204	63.9%	197	61.9%	203	67.0%	280	69.5%	246	69.9%
Total	319	100.0%	318	100.0%	303	100.0%	403	100.0%	352	100.0%

Traditional-Age Transfer Students

Male	60	50.4%	53	49.5%	41	37.6%	80	52.3%	56	43.1%
Female	59	49.6%	54	50.5%	68	62.4%	73	47.7%	74	56.9%
Total	119	100.0%	107	100.0%	109	100.0%	153	100.0%	130	100.0%

Total New Traditional-Age Students

Male	175	40.0%	174	40.9%	141	34.2%	203	36.5%	162	33.6%
Female	263	60.0%	251	59.1%	271	65.8%	353	63.5%	320	66.4%
Total New Students	438	100%	425	100%	412	100%	556	100%	482	100%

Source: Enrollment Management/Undergraduate Admissions

**Ethnicity of New Traditional-Age Students
Fall 2001 - Fall 2005**

New Traditional-Age Freshmen

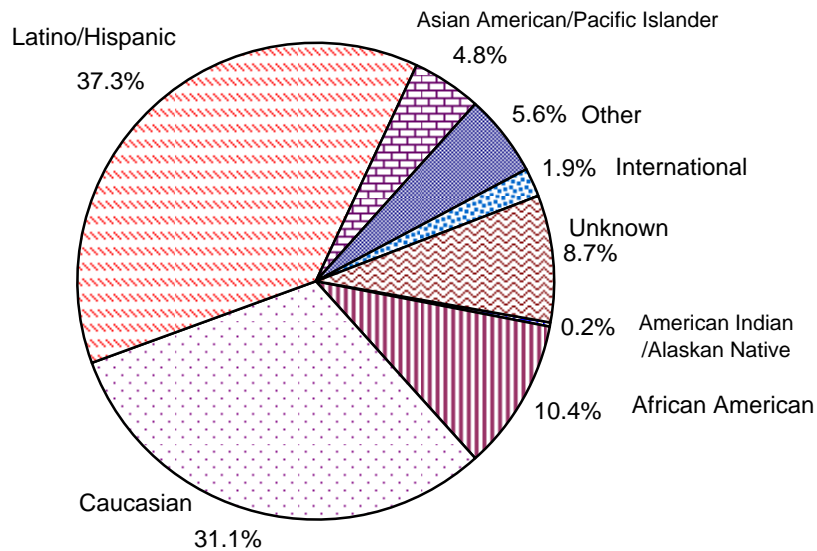
Ethnicity	Fall 2001		Fall 2002		Fall 2003		Fall 2004		Fall 2005	
	Count	%	Count	%	Count	%	Count	%	Count	%
American Indian/ Alaskan Native	2	0.6%	2	0.6%	3	1.0%	3	0.7%	0	0.0%
African American	19	6.0%	25	7.9%	25	8.3%	33	8.2%	33	9.4%
Caucasian	113	35.4%	104	32.7%	111	36.6%	145	36.0%	107	30.4%
Latino/Hispanic	128	40.1%	123	38.7%	124	40.9%	156	38.7%	135	38.4%
Asian American/ Pacific Islander	20	6.3%	17	5.3%	16	5.3%	13	3.2%	18	5.1%
Other	15	4.7%	20	6.3%	12	4.0%	26	6.5%	25	7.1%
Unknown	22	6.9%	27	8.5%	12	4.0%	27	6.7%	34	9.7%
Total	319	100%	318	100%	303	100%	403	100%	352	100%

New Traditional-Age Transfers

Ethnicity	Fall 2001		Fall 2002		Fall 2003		Fall 2004		Fall 2005	
	Count	%	Count	%	Count	%	Count	%	Count	%
American Indian/ Alaskan Native	2	1.7%	1	0.9%	0	0.0%	0	0.0%	1	0.8%
African American	14	11.8%	7	6.5%	14	12.8%	20	13.1%	17	13.1%
Caucasian	43	36.1%	39	36.4%	42	38.5%	57	37.3%	43	33.1%
Latino/Hispanic	30	25.2%	31	29.0%	34	31.2%	47	30.7%	45	34.6%
Asian American/ Pacific Islander	8	6.7%	9	8.4%	4	3.7%	4	2.6%	5	3.8%
Other	12	10.1%	7	6.5%	6	5.5%	8	5.2%	2	1.5%
International	1	0.8%	0	0.0%	6	5.5%	7	4.6%	9	6.9%
Unknown/Refuse to Answer	9	7.6%	13	12.1%	3	2.8%	10	6.5%	8	6.2%
Total	119	100%	107	100%	109	100%	153	100%	130	100%

Source: Enrollment Management/Undergraduate Admissions

Ethnicity of New Traditional-Age Freshmen and New Traditional- Age Transfer Students - Fall 2005

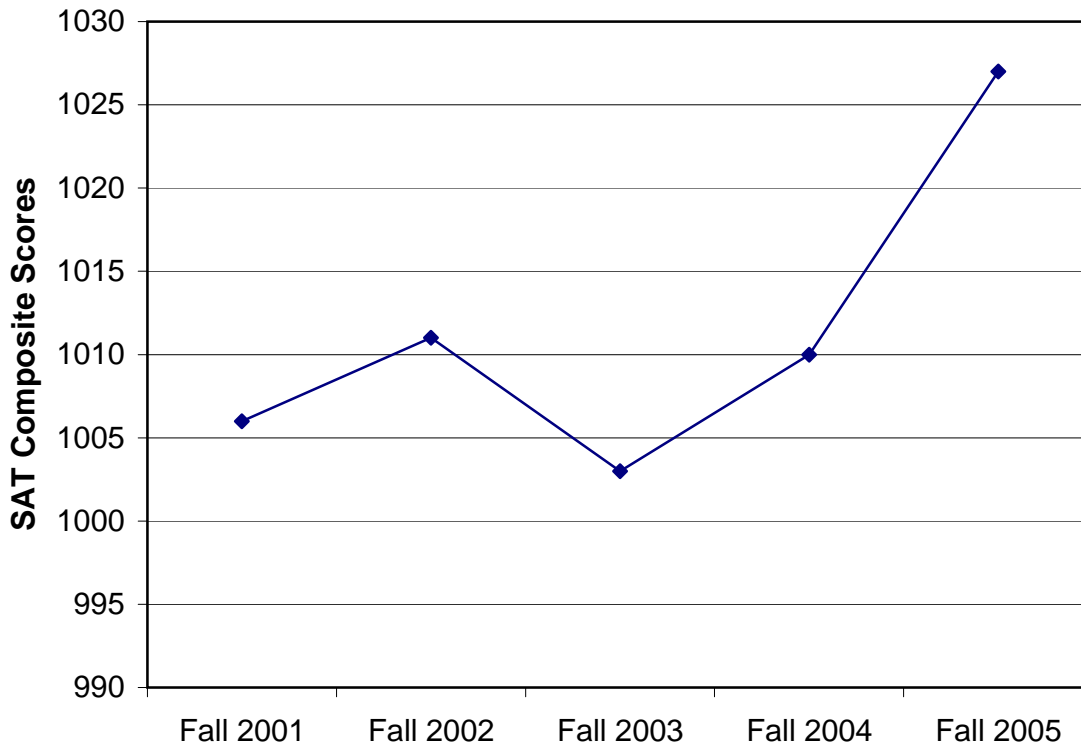


**New Traditional-Age Freshman SAT Scores
Fall 2001 - Fall 2005**

Test Scores	Fall 2001		Fall 2002		Fall 2003		Fall 2004		Fall 2005	
	Mean	Median	Mean	Median	Mean	Median	Mean	Median	Mean	Median
SAT Math	505	500	511	500	504	500	500	510	515	510
SAT Verbal	501	490	500	500	499	490	500	502	512	510
SAT Composite	1006	1000	1011	1000	1003	990	1010	1013	1027	1020

Source: Enrollment Management/Undergraduate Admissions

**Mean SAT Composite Scores
for New Traditional-Age Freshmen
Fall 2000 - Fall 2005**



**New Traditional-Age Freshmen by Major
Fall 2001 - Fall 2005**

College Major	Fall 2001		Fall 2002		Fall 2003		Fall 2004		Fall 2005	
	Count	%	Count	%	Count	%	Count	%	Count	%
Arts & Sciences										
Anthropology	1	0.3%	3	0.9%	0	0.0%	1	0.2%	2	0.6%
Art	5	1.6%	2	0.6%	4	1.3%	2	0.5%	3	0.9%
Athletic Training	0	0.0%	0	0.0%	2	0.7%	15	3.7%	11	3.1%
Behavioral Science	1	0.3%	1	0.3%	0	0.0%	2	0.5%	1	0.3%
Biology	15	4.7%	23	7.2%	17	5.6%	23	5.7%	24	6.8%
Broadcasting	7	2.2%	5	1.6%	4	1.3%	9	2.2%	7	2.0%
Chemistry	6	1.9%	6	1.9%	0	0.0%	3	0.7%	5	1.4%
Communications	17	5.3%	10	3.1%	17	5.6%	13	3.2%	18	5.1%
Comparative Literature	0	0.0%	1	0.3%	1	0.3%	0	0.0%	1	0.3%
Computer Science & Engineering	7	2.2%	11	3.5%	2	0.7%	8	2.0%	5	1.4%
Criminology	15	4.7%	11	3.5%	15	5.0%	22	5.5%	20	5.7%
E-Commerce	0	0.0%	0	0.0%	0	0.0%	0	0.0%	1	0.3%
English	11	3.4%	10	3.1%	6	2.0%	17	4.2%	5	1.4%
Environmental Management	0	0.0%	0	0.0%	0	0.0%	1	0.2%	0	0.0%
German	0	0.0%	0	0.0%	0	0.0%	1	0.2%	0	0.0%
History	7	2.2%	7	2.2%	2	0.7%	9	2.2%	6	1.7%
International Business & Language	2	0.6%	8	2.5%	1	0.3%	3	0.7%	2	0.6%
International Studies	0	0.0%	0	0.0%	0	0.0%	1	0.2%	0	0.0%
Italian Studies	0	0.0%	0	0.0%	2	0.7%	0	0.0%	0	0.0%
Journalism	7	2.2%	5	1.6%	10	3.3%	13	3.2%	10	2.8%
Legal Studies*	7	2.2%	3	0.9%	6	2.0%	16	4.0%	15	4.3%
Liberal Arts	0	0.0%	0	0.0%	3	1.0%	6	1.5%	4	1.1%
Mathematics	10	3.1%	4	1.3%	7	2.3%	5	1.2%	6	1.7%
Movement & Sports Science	13	4.1%	14	4.4%	9	3.0%	7	1.7%	10	2.8%
Music	1	0.3%	3	0.9%	2	0.7%	2	0.5%	0	0.0%
Natural History	0	0.0%	0	0.0%	0	0.0%	1	0.2%	0	0.0%
Philosophy	2	0.6%	2	0.6%	2	0.7%	0	0.0%	2	0.6%
Physics	0	0.0%	2	0.6%	1	0.3%	1	0.2%	0	0.0%
Political Science	13	4.1%	12	3.8%	9	3.0%	6	1.5%	11	3.1%
Psychology	31	9.7%	35	11.0%	23	7.6%	33	8.2%	28	8.0%
Religion/Philosophy	0	0.0%	0	0.0%	1	0.3%	0	0.0%	0	0.0%
Social Science	1	0.3%	1	0.3%	2	0.7%	2	0.5%	1	0.3%
Sociology	4	1.3%	3	0.9%	3	1.0%	4	1.0%	4	1.1%
Spanish	1	0.3%	0	0.0%	2	0.7%	0	0.0%	2	0.6%
Speech Communication	0	0.0%	0	0.0%	0	0.0%	1	0.2%	0	0.0%
Theatre Arts	1	0.3%	9	2.8%	7	2.3%	5	1.2%	9	2.6%
	185	58.0%	191	60.1%	160	52.8%	232	57.6%	213	60.5%
Business & Public Management										
Accounting	11	3.4%	9	2.8%	5	1.7%	4	1.0%	2	0.6%
Business Administration/Management	41	12.9%	30	9.4%	35	11.6%	24	6.0%	31	8.8%
Economics	3	0.9%	1	0.3%	3	1.0%	1	0.2%	0	0.0%
Health Administration*	1	0.3%	4	1.3%	3	1.0%	3	0.7%	0	0.0%
Marketing	1	0.3%	2	0.6%	5	1.7%	2	0.5%	3	0.9%
Public Administration*	0	0.0%	2	0.6%	2	0.7%	1	0.2%	2	0.6%
	57	17.9%	48	15.1%	53	17.5%	35	8.7%	38	10.8%
Education & Organizational Leadership										
Child Development	7	2.2%	5	1.6%	3	1.0%	4	1.0%	6	1.7%
Liberal Studies	22	6.9%	22	6.9%	17	5.6%	20	5.0%	20	5.7%
	29	9.1%	27	8.5%	20	6.6%	24	6.0%	26	7.4%
College not Assigned										
Major not declared	48	15.0%	52	16.4%	70	23.1%	112	27.8%	75	21.3%
Grand Total All Students	319	100%	318	100%	303	100%	403	100%	352	100%

*Fall 2001-Fall 2002: Legal Studies, Health Administration, and Public Administration were within the School of Public Affairs & Health Administration.

Source: Enrollment Management/Undergraduate Admissions

**New Traditional-Age Transfers by Major
Fall 2001 - Fall 2005**

College Major	Fall 2001		Fall 2002		Fall 2003		Fall 2004		Fall 2005	
	Count	%	Count	%	Count	%	Count	%	Count	%
Arts & Sciences										
Anthropology	1	0.8%	0	0.0%	0	0.0%	1	0.7%	0	0.0%
Art	1	0.8%	2	1.9%	1	0.9%	0	0.0%	1	0.8%
Athletic Training	0	0.0%	0	0.0%	5	4.6%	1	0.7%	4	3.1%
Behavioral Science	1	0.8%	1	0.9%	2	1.8%	2	1.3%	1	0.8%
Biology	4	3.4%	5	4.7%	3	2.8%	3	2.0%	1	0.8%
Broadcasting	5	4.2%	2	1.9%	3	2.8%	3	2.0%	9	6.9%
Chemistry	2	1.7%	1	0.9%	0	0.0%	2	1.3%	0	0.0%
Communications	3	2.5%	2	1.9%	6	5.5%	13	8.6%	4	3.1%
Comparative Literature	0	0.0%	1	0.9%	0	0.0%	0	0.0%	0	0.0%
Computer Science & Engineering	3	2.5%	4	3.7%	5	4.6%	2	1.3%	0	0.0%
Criminology	9	7.6%	1	0.9%	7	6.4%	8	5.3%	6	4.6%
English	4	3.4%	2	1.9%	3	2.8%	2	1.3%	4	3.1%
French	0	0.0%	1	0.9%	0	0.0%	0	0.0%	0	0.0%
History	2	1.7%	3	2.8%	3	2.8%	7	4.6%	3	2.3%
International Business & Language	0	0.0%	4	3.7%	1	0.9%	0	0.0%	2	1.5%
International Studies	0	0.0%	1	0.9%	0	0.0%	0	0.0%	0	0.0%
Journalism	4	3.4%	1	0.9%	1	0.9%	2	1.3%	0	0.0%
Legal Studies*	2	1.7%	1	0.9%	5	4.6%	2	1.3%	6	4.6%
Liberal Arts	0	0.0%	0	0.0%	2	1.8%	4	2.6%	4	3.1%
Mathematics	0	0.0%	2	1.9%	1	0.9%	1	0.7%	1	0.8%
Movement & Sports Science	11	9.2%	8	7.5%	4	3.7%	8	5.3%	3	2.3%
Music	2	1.7%	2	1.9%	1	0.9%	1	0.7%	0	0.0%
Philosophy	0	0.0%	1	0.9%	2	1.8%	1	0.7%	0	0.0%
Political Science	2	1.7%	3	2.8%	3	2.8%	2	1.3%	4	3.1%
Psychology	5	4.2%	9	8.4%	9	8.3%	14	9.3%	11	8.5%
Religion/Philosophy	0	0.0%	0	0.0%	1	0.9%	0	0.0%	1	0.8%
Social Science	0	0.0%	0	0.0%	0	0.0%	0	0.0%	1	0.8%
Sociology	6	5.0%	0	0.0%	3	2.8%	4	2.6%	3	2.3%
Spanish	0	0.0%	0	0.0%	0	0.0%	1	0.7%	2	1.5%
Speech Communication	0	0.0%	0	0.0%	0	0.0%	1	0.7%	0	0.0%
Theatre Arts	2	1.7%	1	0.9%	0	0.0%	0	0.0%	3	2.3%
	69	58.0%	58	54.2%	71	65.1%	85	56.3%	74	56.9%
Business & Public Management										
Accounting	1	0.8%	3	2.8%	2	1.8%	2	1.3%	0	0.0%
Business Admin./Mgmt.	12	10.1%	9	8.4%	9	8.3%	19	12.6%	14	10.8%
Economics	2	1.7%	1	0.9%	0	0.0%	0	0.0%	0	0.0%
Health Administration*	1	0.8%	0	0.0%	0	0.0%	0	0.0%	0	0.0%
Marketing	3	2.5%	3	2.8%	0	0.0%	5	3.3%	5	3.8%
Organizational Management*	1	0.8%	1	0.9%	0	0.0%	0	0.0%	0	0.0%
Public Administration*	2	1.7%	0	0.0%	0	0.0%	0	0.0%	2	1.5%
	22	18.5%	17	15.9%	11	10.1%	26	17.2%	21	16.2%
Education & Organizational Leadership										
Child Development	4	3.4%	3	2.8%	4	3.7%	3	2.0%	4	3.1%
Liberal Studies	12	10.1%	13	12.1%	8	7.3%	10	6.6%	14	10.8%
	16	13.4%	16	15.0%	12	11.0%	13	8.6%	18	13.8%
College not Assigned										
Major not declared	12	10.1%	16	15.0%	15	13.8%	27	17.9%	17	13.1%
Grand Total All Students	119	100%	107	100%	109	100%	151	100%	130	100%

*Fall 2001-Fall 2002: Legal Studies, Health Administration, Organizational Management, and Public Administration were within the School of Public Affairs and Health Administration

Source: Enrollment Management/Undergraduate Admissions

**New Traditional-Age Students by Geographic Region
Fall 2001 - Fall 2005**

U.S. State	Fall 2001	Fall 2002	Fall 2003	Fall 2004	Fall 2005
Arizona	0	5	2	3	3
California	401	389	380	513	451
Colorado	0	1	0	1	0
Connecticut	0	0	1	1	0
Florida	0	0	1	0	1
Hawaii	2	1	3	5	3
Idaho	0	0	0	1	0
Illinois	1	0	0	1	0
Indiana	1	0	0	0	0
Kansas	0	1	0	0	0
Kentucky	0	0	0	0	0
Massachusetts	1	0	3	1	0
Michigan	0	0	0	0	0
Minnesota	1	0	1	0	0
Missouri	0	0	1	1	0
Nevada	1	0	4	1	2
New Hampshire	0	0	0	2	0
New Jersey	1	0	0	1	0
New Mexico	2	0	0	1	0
New York	0	0	0	1	2
Ohio	0	1	1	1	0
Oklahoma	0	0	0	0	0
Oregon	3	2	6	3	0
Pennsylvania	0	1	2	2	0
Texas	3	1	0	1	0
Utah	0	0	1	0	0
Virginia	0	0	0	1	1
Washington	7	5	0	8	8
Wisconsin	0	1	0	0	0
Unknown U.S. State	1	4	0	0	2
Total U.S. Residents	425	412	406	549	473

Source: Enrollment Management/Undergraduate Admissions

New Traditional-Age International Students by Geographic Region Fall 2001 - Fall 2005

Foreign Country	Fall 2001	Fall 2002	Fall 2003	Fall 2004	Fall 2005
Albania	0	0	0	0	0
Brazil	0	0	0	0	0
China	2	0	0	0	0
Cyprus	1	0	0	0	0
Ecuador	2	1	0	2	1
France	1	1	2	1	2
Germany	1	1	1	0	0
Ghana	0	0	0	0	0
Guatemala	1	0	0	0	0
Hong Kong	0	0	0	0	0
Indonesia	0	0	0	0	0
Japan	1	3	0	1	2
Lebanon	0	1	0	0	0
Mexico	2	1	0	0	1
Spain	1	1	1	1	1
United Kingdom	1	1	0	2	2
Unknown Foreign Country	0	3	2	0	0
Total Foreign Students	13	13	6	7	9

Source: Enrollment Management/Undergraduate Admissions

**Entrance GPA for New Students
Fall 2001 - Fall 2005**

New Traditional-Age Freshmen

GPA Range	Fall 2001	Fall 2002	Fall 2003	Fall 2004	Fall 2005
3.50 - 4.00+	140	158	145	188	171
3.00 - 3.49	134	121	132	162	119
2.50 - 2.99	39	34	23	51	55
2.00 - 2.49	2	2	2	1	3
GPA not reported	4	3	1	0	4
	319	318	303	402	352
Mean Freshmen GPA	3.44	3.48	3.49	3.48	3.46

Source: Enrollment Management/Undergraduate Admissions

New Traditional-Age Transfers

GPA Range	Fall 2001	Fall 2002	Fall 2003	Fall 2004	Fall 2005
3.50 - 4.00+	11	13	11	11	14
3.00 - 3.49	28	32	34	34	43
2.50 - 2.99	52	28	43	43	51
2.00 - 2.49	19	23	9	9	11
Below 2.00	0	1	0	0	0
GPA not reported	9	10	12	12	11
	119	107	109	109	130
Mean Transfer GPA	2.88	2.91	2.97	3.00	2.99

Source: Enrollment Management/Undergraduate Admissions

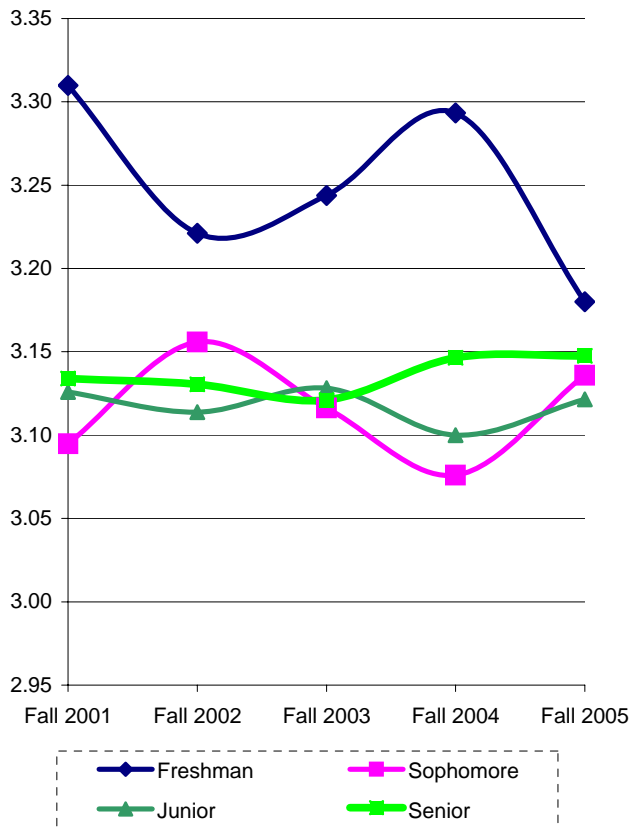
PERFORMANCE PROFILE

All statistics are based on data from ULV's census on November 15 for each year specified, unless otherwise noted.

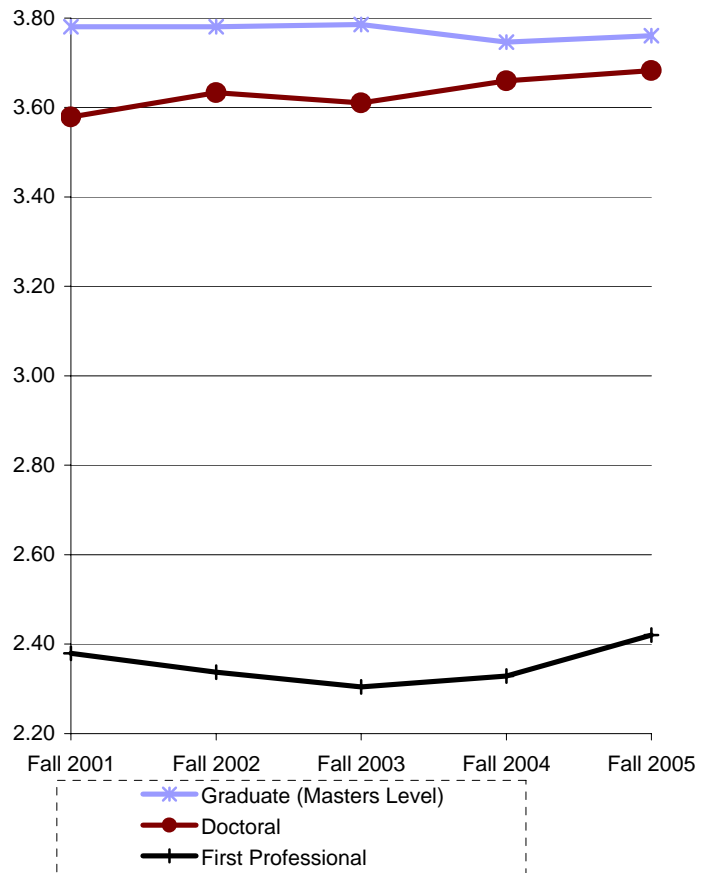
Student GPA by Level Fall 2001 - Fall 2005

Student Level	Fall 2001		Fall 2002		Fall 2003		Fall 2004		Fall 2005	
	Median	Mean	Median	Mean	Median	Mean	Median	Mean	Median	Mean
Freshman	3.50	3.31	3.30	3.22	3.40	3.24	3.43	3.29	3.30	3.18
Sophomore	3.11	3.09	3.20	3.16	3.11	3.12	3.10	3.08	3.20	3.14
Junior	3.13	3.13	3.10	3.11	3.14	3.13	3.09	3.10	3.14	3.12
Senior	3.14	3.13	3.13	3.13	3.12	3.12	3.15	3.15	3.15	3.15
Graduate (Masters Level)	3.88	3.78	3.87	3.78	3.88	3.79	3.86	3.75	3.86	3.76
Doctoral	3.64	3.58	3.71	3.63	3.66	3.61	3.72	3.66	3.74	3.68
First Professional	2.37	2.38	2.30	2.34	2.27	2.30	2.29	2.33	2.35	2.42
ULV Overall	3.46	3.36	3.53	3.41	3.48	3.38	3.43	3.35	3.43	3.36

Means of Undergraduate Student GPA
Fall 2001-Fall 2005



Means of Graduate Student GPA
Fall 2001-Fall 2005



**Retention Rates for First-Time Traditional-Age Freshmen
Fall 1995 - Fall 2004**

Students Continuing at ULV													
Fall Term	FT Count	After 1 Year		After 2 Years		After 3 Years		After 4 Years		After 5 Years		After 6 Years	
1995	184	139	76%	113	61%	100	54%	28	15%	10	5%	4	2%
1996	196	153	78%	126	64%	122	62%	35	18%	10	5%	5	3%
1997	202	167	83%	149	74%	135	67%	44	22%	9	4%	7	3%
1998	321	267	83%	217	68%	195	61%	59	18%	12	4%	12	4%
1999	320	255	80%	228	71%	215	67%	50	16%	10	3%	3	1%
2000	285	236	83%	211	74%	202	71%	71	25%	14	5%		
2001	305	257	84%	234	77%	223	73%	123	40%				
2002	294	258	88%	227	77%	227	77%						
2003	289	253	88%	228	79%								
2004	375	333	89%										
2005	332												

Source: Enrollment Management/Undergraduate Admissions

**Graduation Rates for Traditional-Age Undergraduate Students
Fall 1995 - Fall 2001**

Students Graduating from ULV							
Fall Term	Head Count	Within 4 Years		Within 5 Years		Within 6 Years	
1995	184	76	41%	78	42%	85	46%
1996	196	60	31%	87	44%	92	47%
1997	202	62	31%	96	48%	102	50%
1998	321	106	33%	146	45%	152	47%
1999	320	122	38%	142	44%	167	52%
2000	285	71	25%	134	47%		
2001	305	123	40%				
2002	294						

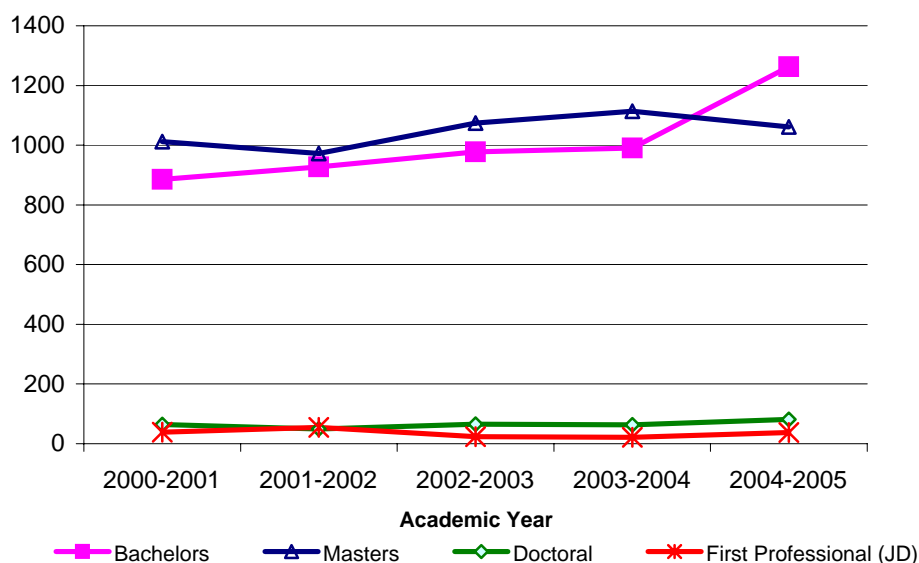
Source: Enrollment Management/Undergraduate Admissions

Degrees Awarded by ULV between July 1 and June 30 2001 - 2005

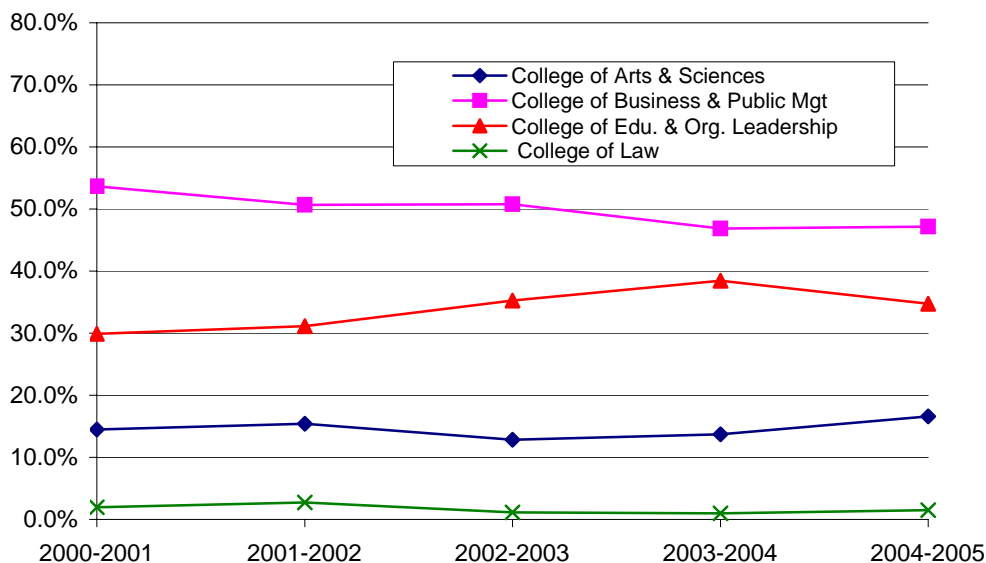
Degree Awarded	2000-2001		2001-2002		2002-2003		2003-2004		2004-2005	
Associate	9	0.4%	2	0.1%	3	0.1%	3	0.1%	2	0.1%
Bachelors	885	44.1%	927	46.2%	978	45.6%	990	45.2%	1263	51.7%
Masters	1012	50.4%	972	48.5%	1074	50.1%	1114	50.8%	1061	43.4%
Doctoral	64	3.2%	49	2.4%	65	3.0%	63	2.9%	81	3.3%
First Professional (JD)	39	1.9%	55	2.7%	24	1.1%	21	1.0%	37	1.5%
Total	2009	100%	2005	100%	2144	100%	2191	100%	2444	100%

Source: Enrollment Management/Undergraduate Admissions

Degrees Awarded by ULV 2001-2005



Percentage of Total Degrees Awarded by Colleges 2001-2005



**Bachelors Degrees Conferred to ULV Students
2001 - 2005**

Major	2000-2001		2001-2002		2002-2003		2003-2004		2004-2005	
College of Arts & Sciences										
Athletic Training	0	0.0%	1	0.1%	1	0.1%	3	0.3%	3	0.2%
Anthropology	2	0.2%	5	0.5%	1	0.1%	1	0.1%	2	0.2%
Art	7	0.8%	7	0.8%	4	0.4%	8	0.8%	8	0.6%
Art History	0	0.0%	0	0.0%	1	0.1%	0	0.0%	0	0.0%
Behavioral Science	9	1.0%	17	1.8%	10	1.0%	11	1.1%	20	1.6%
Biology	6	0.7%	10	1.1%	8	0.8%	10	1.0%	5	0.4%
Broadcasting	8	0.9%	11	1.2%	12	1.2%	12	1.2%	16	1.3%
Chemistry	3	0.3%	2	0.2%	3	0.3%	2	0.2%	2	0.2%
Communications	8	0.9%	5	0.5%	9	0.9%	14	1.4%	13	1.0%
Computer Science & Engineering	9	1.0%	12	1.3%	11	1.1%	19	1.9%	23	1.8%
Criminology	27	3.1%	20	2.2%	32	3.3%	17	1.7%	41	3.2%
English	23	2.6%	23	2.5%	15	1.5%	13	1.3%	19	1.5%
Environmental Biology	1	0.1%	0	0.0%	1	0.1%	1	0.1%	0	0.0%
Environmental Management	0	0.0%	0	0.0%	0	0.0%	0	0.0%	1	0.1%
History	4	0.5%	8	0.9%	10	1.0%	2	0.2%	7	0.6%
International Business & Language	4	0.5%	3	0.3%	2	0.2%	7	0.7%	4	0.3%
International Studies	3	0.3%	1	0.1%	2	0.2%	0	0.0%	0	0.0%
Journalism	4	0.5%	9	1.0%	13	1.3%	4	0.4%	6	0.5%
Legal/Paralegal Studies*	10	1.1%	7	0.8%	12	1.2%	12	1.2%	12	1.0%
Liberal Arts	0	0.0%	0	0.0%	1	0.1%	1	0.1%	1	0.1%
Mathematics	5	0.6%	5	0.5%	2	0.2%	3	0.3%	4	0.3%
Movement & Sports Science/Phys Ed	12	1.4%	22	2.4%	14	1.4%	17	1.7%	24	1.9%
Music	1	0.1%	3	0.3%	1	0.1%	2	0.2%	4	0.3%
Natural Science	0	0.0%	1	0.1%	0	0.0%	0	0.0%	1	0.1%
Philosophy	1	0.1%	2	0.2%	0	0.0%	0	0.0%	2	0.2%
Physics	0	0.0%	1	0.1%	1	0.1%	2	0.2%	0	0.0%
Political Science	9	1.0%	9	1.0%	9	0.9%	10	1.0%	27	2.1%
Psychology	65	7.3%	75	8.1%	40	4.1%	50	5.1%	77	6.1%
Religion	1	0.1%	1	0.1%	2	0.2%	3	0.3%	2	0.2%
Religion & Philosophy	2	0.2%	5	0.5%	1	0.1%	1	0.1%	3	0.2%
Social Science	11	1.2%	4	0.4%	10	1.0%	8	0.8%	7	0.6%
Sociology	22	2.5%	13	1.4%	13	1.3%	11	1.1%	9	0.7%
Spanish	2	0.2%	2	0.2%	1	0.1%	2	0.2%	2	0.2%
Speech Communication	0	0.0%	0	0.0%	1	0.1%	5	0.5%	5	0.4%
Theatre Arts	2	0.2%	2	0.2%	0	0.0%	1	0.1%	1	0.1%
Student Designed Majors	1	0.1%	1	0.1%	1	0.1%	0	0.0%	0	0.0%
	262	29.5%	287	31.0%	244	24.9%	252	25.5%	351	27.8%
College of Business & Public Management										
Accounting	19	2.1%	18	1.9%	24	2.5%	13	1.3%	18	1.4%
Business Administration	293	33.1%	298	32.1%	297	30.4%	271	27.4%	337	26.7%
Business Management	7	0.8%	6	0.6%	1	0.1%	0	0.0%	1	0.1%
Economics	5	0.6%	7	0.8%	6	0.6%	6	0.6%	11	0.9%
Health Administration	37	4.2%	43	4.6%	33	3.4%	26	2.6%	32	2.5%
Marketing	12	1.4%	9	1.0%	13	1.3%	6	0.6%	17	1.3%
Organizational Management*	135	15.3%	141	15.2%	176	18.0%	180	18.2%	210	16.6%
Public Administration*	31	3.5%	24	2.6%	30	3.1%	25	2.5%	25	2.0%
	539	60.9%	546	58.9%	580	59.3%	527	53.2%	651	51.5%
College of Education & Organizational Leadership										
Child Development	16	1.8%	14	1.5%	32	3.3%	42	4.2%	101	8.0%
Child Development/Life	1	0.1%	0	0.0%	1	0.1%	0	0.0%	0	0.0%
Liberal Studies	67	7.6%	80	8.6%	121	12.4%	169	17.1%	160	12.7%
	84	9.5%	94	10.1%	154	15.7%	211	21.3%	261	20.7%
Total Bachelors Degrees Conferred	885	100%	927	100%	978	100%	990	100%	1263	100%

*Fall 2000-Fall 2002: Legal Studies, Paralegal Studies, Health Services Management, Healthcare Management, Organizational Management, and Public Administration were within the School of Public Affairs & Health Administration.

Source: Enrollment Management/Undergraduate Admissions

**Masters Degrees Awarded by ULV
2001- 2005**

Major	2000-2001		2001-2002		2002-2003		2003-2004		2004-2005	
College of Arts & Sciences										
Counseling	5	0.5%	3	0.3%	15	1.4%	24	2.2%	18	1.7%
Counseling/Marriage & Family Therapy (MFT)	9	0.9%	9	0.9%	4	0.4%	15	1.3%	17	1.6%
Counseling (Special Emphasis)	7	0.7%	3	0.3%	4	0.4%	1	0.1%	3	0.3%
Psychology	7	0.7%	7	0.7%	6	0.6%	1	0.1%	9	0.8%
	28	2.8%	22	2.3%	29	2.7%	41	3.7%	47	4.4%
College of Business & Public Management										
Business Administration	366	36.2%	344	35.4%	369	34.4%	365	32.8%	367	34.6%
Business Information Technology	0	0.0%	0	0.0%	2	0.2%	7	0.6%	11	1.0%
Business Organizational Management	76	7.5%	62	6.4%	67	6.2%	62	5.6%	41	3.9%
Gerontology	14	1.4%	6	0.6%	12	1.1%	8	0.7%	8	0.8%
Health Administration	2	0.2%	1	0.1%	8	0.7%	1	0.1%	1	0.1%
Health Services Administration	24	2.4%	18	1.9%	22	2.0%	22	2.0%	24	2.3%
International Administration	16	1.6%	4	0.4%	1	0.1%	0	0.0%	0	0.0%
Leadership & Management	13	1.3%	28	2.9%	25	2.3%	41	3.7%	25	2.4%
Public Administration	14	1.4%	20	2.1%	11	1.0%	15	1.3%	19	1.8%
	525	51.9%	483	49.7%	517	48.1%	521	46.8%	496	46.7%
College of Education & Organizational Leadership										
Child Development	3	0.3%	5	0.5%	4	0.4%	14	1.3%	3	0.3%
Child Development/Life	2	0.2%	3	0.3%	1	0.1%	4	0.4%	0	0.0%
Child Life	0	0.0%	1	0.1%	6	0.6%	0	0.0%	6	0.6%
Educational Management	128	12.6%	94	9.7%	96	8.9%	98	8.8%	93	8.8%
Reading	91	9.0%	48	4.9%	14	1.3%	13	1.2%	25	2.4%
School/Educational Counseling	118	11.7%	157	16.2%	209	19.5%	197	17.7%	144	13.6%
Special Emphasis	107	10.6%	133	13.7%	175	16.3%	193	17.3%	240	22.6%
Special Emphasis: Adv. Teaching Methods	7	0.7%	25	2.6%	22	2.0%	32	2.9%	7	0.7%
Student Designed Majors	3	0.3%	1	0.1%	1	0.1%	1	0.1%	0	0.0%
	459	45.4%	467	48.0%	528	49.2%	552	49.6%	518	48.8%
Total Masters Degrees Conferred	1012	100%	972	100%	1074	100%	1114	100%	1061	100%

*Fall 2001-Fall 2002: Gerontology, Health Administration, Health Services Administration, International Administration, and Public Administration were within the School of Public Affairs & Health Administration

Source: Enrollment Management/Undergraduate Admissions

**Doctoral Degrees Conferred by ULV
2001 - 2005**

Major	2000-2001		2001-2002		2002-2003		2003-2004		2004-2005	
Clinical-Community Psychology (PsyD)	0	0.0%	0	0.0%	1	1.8%	6	10.3%	7	8.6%
Educational/Organizational Leadership/Management (EdD)	42	65.6%	35	71.4%	45	78.9%	36	62.1%	60	74.1%
Public Administration (DPA)	22	34.4%	14	28.6%	11	19.3%	16	27.6%	14	17.3%
Total Doctoral Degrees Conferred	64	100%	49	100%	57	100%	58	100%	81	100%

**First Professional Degrees Conferred by ULV
2001 - 2005**

Major	2000-2001		2001-2002		2002-2003		2003-2004		2004-2005	
Juris Doctor (JD)	39	100%	55	100%	24	100%	21	100%	37	100%
Total Professional Degrees Conferred	39	100%	55	100%	24	100%	21	100%	37	100%

Source: Enrollment Management/Undergraduate Admissions

FACULTY AND STAFF PROFILE

All statistics are based on data from ULV's census on November 15 for each year specified, unless otherwise noted.

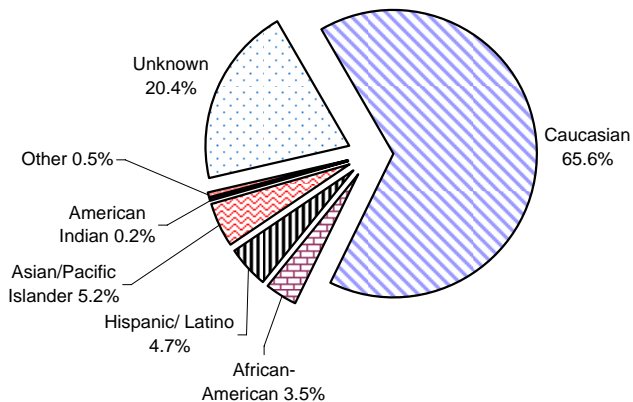
Gender and Ethnicity of ULV Faculty Fall 2005

Ethnicity

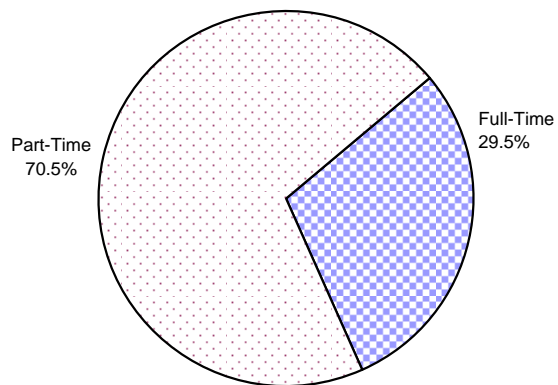
Faculty	Caucasian		African-American		Hispanic/Latino		Asian/Pacific Islander		American Indian		Other		Ethnicity Unknown		Total	
Full-Time																
Male	84	54.2%	2	50.0%	3	42.9%	6	40.0%	0	0.0%	1	0.0%	1	0.0%	97	51.9%
Female	71	45.8%	2	50.0%	4	57.1%	9	60.0%	0	0.0%	0	0.0%	4	0.0%	90	48.1%
Total	155	100.0%	4	100.0%	7	100.0%	15	100.0%	0	0.0%	1	0.0%	5	0.0%	187	100.0%
Part-Time																
Male	142	54.6%	11	61.1%	11	47.8%	10	55.6%	0	0.0%	1	50.0%	60	48.4%	235	52.7%
Female	118	45.4%	7	38.9%	12	52.2%	8	44.4%	1	100.0%	1	50.0%	56	45.2%	203	45.5%
Unknown	0	0.0%	0	0.0%	0	0.0%	0	0.0%	0	0.0%	0	0.0%	8	6.5%	8	1.8%
Total	260	100.0%	18	100.0%	23	100.0%	18	100.0%	1	100.0%	2	100.0%	124	100.0%	446	100.0%
All U.S. Faculty																
Male	226	54.5%	13	59.1%	14	46.7%	16	48.5%	0	0.0%	2	66.7%	61	47.3%	332	52.4%
Female	189	45.5%	9	40.9%	16	53.3%	17	51.5%	1	100.0%	1	33.3%	60	46.5%	293	46.3%
Unknown	0	0.0%	0	0.0%	0	0.0%	0	0.0%	0	0.0%	0	0.0%	8	6.2%	8	1.3%
Total	415	100.0%	22	100.0%	30	100.0%	33	100.0%	1	100.0%	3	100.0%	129	100.0%	633	100.0%

Source: Academic Affairs Office

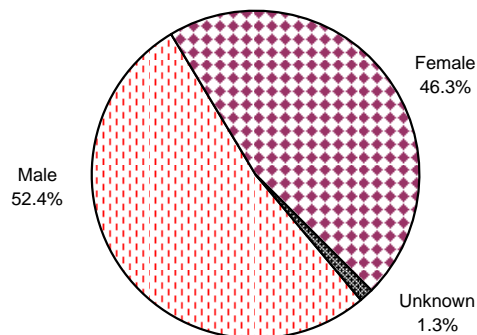
Ethnicity of ULV Faculty - Fall 2005



Teaching Status of ULV Faculty - Fall 2005



Gender of ULV Faculty - Fall 2005

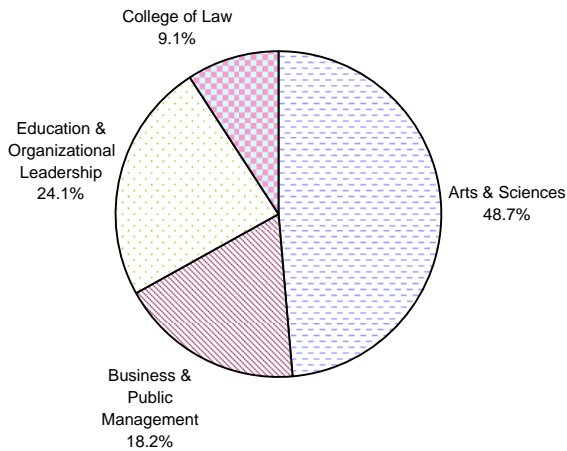


Rank by College of Full-Time Faculty Fall 2001 - Fall 2005

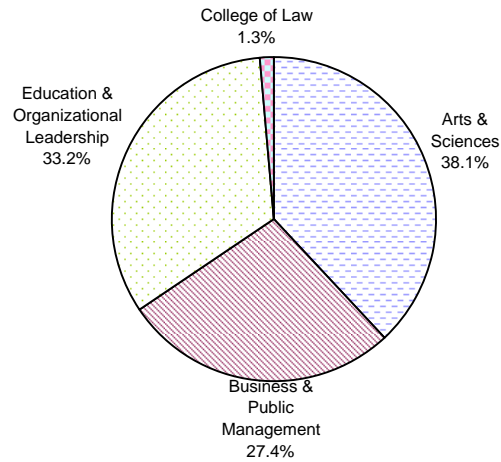
College/School	Rank	Fall 2001		Fall 2002		Fall 2003		Fall 2004		Fall 2005	
Arts & Sciences	Professor	39	45.3%	40	46.0%	41	45.6%	41	45.1%	39	42.9%
	Associate Professor	20	23.3%	20	23.0%	25	27.8%	33	36.3%	39	42.9%
	Assistant Professor	27	31.4%	27	31.0%	24	26.7%	17	18.7%	12	13.2%
	Instructor	0	0.0%	0	0.0%	0	0.0%	0	0.0%	1	1.1%
Total		86	100.0%	87	100.0%	90	100.0%	91	100.0%	91	100.0%
Business & Public Management	Professor	5	33.3%	6	35.3%	13	40.6%	17	50.0%	17	50.0%
	Associate Professor	6	40.0%	6	35.3%	10	31.3%	6	17.6%	14	41.2%
	Assistant Professor	4	26.7%	5	29.4%	8	25.0%	10	29.4%	3	8.8%
	Visiting Professor	0	0.0%	0	0.0%	1	3.1%	1	2.9%	0	0.0%
Total		15	100.0%	17	100.0%	32	100.0%	34	100.0%	34	100.0%
Education & Organizational Leadership	Professor	10	26.3%	12	30.0%	15	36.6%	14	35.0%	15	33.3%
	Associate Professor	14	36.8%	12	30.0%	9	22.0%	11	27.5%	12	26.7%
	Assistant Professor	14	36.8%	16	40.0%	17	41.5%	15	37.5%	18	40.0%
Total		38	100.0%	40	100.0%	41	100.0%	40	100.0%	45	100.0%
College of Law	Professor	4	36.4%	6	40.0%	7	43.8%	7	43.8%	8	47.1%
	Associate Professor	0	0.0%	2	13.3%	5	31.3%	5	31.3%	5	29.4%
	Assistant Professor	7	63.6%	7	46.7%	3	18.8%	2	12.5%	2	11.8%
	Visiting Professor	0	0.0%	0	0.0%	1	6.3%	2	12.5%	2	11.8%
Total		11	100.0%	15	100.0%	16	100.0%	16	100.0%	17	100.0%
Public Affairs & Health Administration (School of Org. Mgmt.)*	Professor	4	36.4%	3	30.0%						
	Associate Professor	4	36.4%	5	50.0%						
	Assistant Professor	3	27.3%	2	20.0%						
Total		11	100.0%	10	100.0%						
All Colleges & Schools	Professor	62	38.5%	67	39.6%	76	42.5%	79	43.6%	79	42.2%
	Associate Professor	44	27.3%	45	26.6%	49	27.4%	55	30.4%	70	37.4%
	Assistant Professor	55	34.2%	57	33.7%	52	29.1%	44	24.3%	35	18.7%
	Visiting Professor	0	0.0%	0	0.0%	2	1.1%	3	1.7%	2	1.1%
	Instructor	0	0.0%	0	0.0%	0	0.0%	0	0.0%	1	0.5%
Total		161	100.0%	169	100.0%	179	100.0%	181	100.0%	187	100.0%

*The School of Public Affairs & Health Administration merged with the College of Business in Fall 2003 to create the College of Business & Public Management
Source: Academic Affairs Office

Full-Time Faculty by College - Fall 2005



Part-Time Faculty by College - Fall 2005



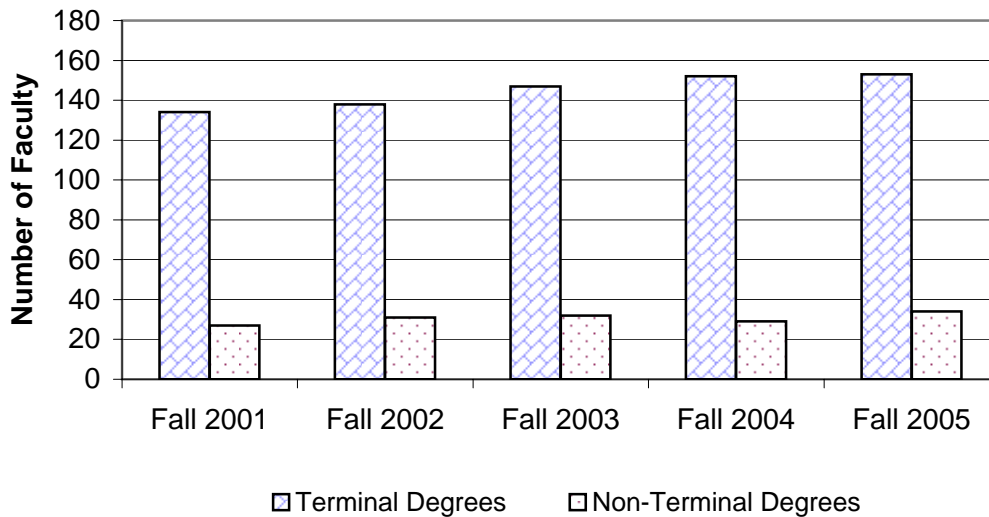
Highest Degree of Full-Time Faculty Fall 2001 - Fall 2005

Highest Degree	Fall 2001		Fall 2002		Fall 2003		Fall 2004		Fall 2005	
BA	2	1.2%	1	0.6%	1	0.6%	1	0.6%	1	0.5%
BCL**	0	0.0%	0	0.0%	0	0.0%	0	0.0%	1	0.5%
BS	1	0.6%	1	0.6%	1	0.6%	0	0.0%	0	0.0%
DA	0	0.0%	0	0.0%	1	0.6%	1	0.6%	1	0.5%
DMA*	2	1.2%	2	1.2%	2	1.1%	2	1.1%	2	1.1%
DPA*	2	1.2%	2	1.2%	2	1.1%	2	1.1%	2	1.1%
EdD*	17	10.6%	20	11.8%	22	12.3%	24	13.3%	26	13.9%
JD*	12	7.5%	14	8.3%	17	9.5%	19	10.5%	20	10.7%
LLB*	0	0.0%	1	0.6%	1	0.6%	1	0.6%	1	0.5%
LLM*	1	0.6%	1	0.6%	1	0.6%	1	0.6%	1	0.5%
MA	10	6.2%	13	7.7%	13	7.3%	13	7.2%	15	8.0%
MA* (PEPPIT Criteria)	5	3.1%	3	1.8%	3	1.7%	2	1.1%	2	1.1%
MBA	3	1.9%	3	1.8%	1	0.6%	1	0.6%	1	0.5%
MBA* (PEPPIT Criteria)	2	1.2%	2	1.2%	2	1.1%	2	1.1%	2	1.1%
MEd	1	0.6%	1	0.6%	1	0.6%	1	0.6%	3	1.6%
MEd* (PEPPIT Criteria)	1	0.6%	1	0.6%	1	0.6%	1	0.6%	1	0.5%
MFA*	4	2.5%	5	3.0%	4	2.2%	4	2.2%	4	2.1%
MLIS*	1	0.6%	1	0.6%	1	0.6%	1	0.6%	0	0.0%
MLS	1	0.6%	1	0.6%	1	0.6%	1	0.6%	0	0.0%
MLS* (PEPPIT Criteria)	1	0.6%	1	0.6%	1	0.6%	1	0.6%	1	0.5%
MS	9	5.6%	11	6.5%	13	7.3%	11	6.1%	12	6.4%
MS* (PEPPIT Criteria)	4	2.5%	4	2.4%	5	2.8%	4	2.2%	4	2.1%
MST*	1	0.6%	1	0.6%	1	0.6%	0	0.0%	0	0.0%
PhD*	81	50.3%	80	47.3%	84	46.9%	88	48.6%	87	46.5%
Total	161	100%	169	100%	179	100%	181	100%	187	100%
Terminal Degrees*	134	83.2%	138	81.7%	147	82.1%	152	84.0%	153	81.8%

** Bachelor of Civil Law

Source: Academic Affairs Office

Highest Degree of Full-Time Faculty



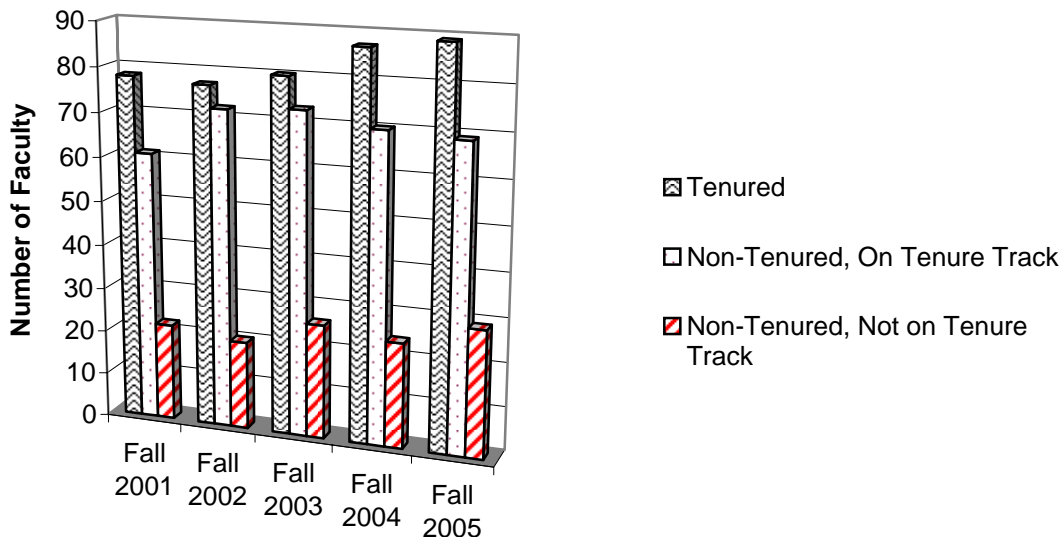
Tenure Status of Full-Time Faculty

Fall 2001 - Fall 2005

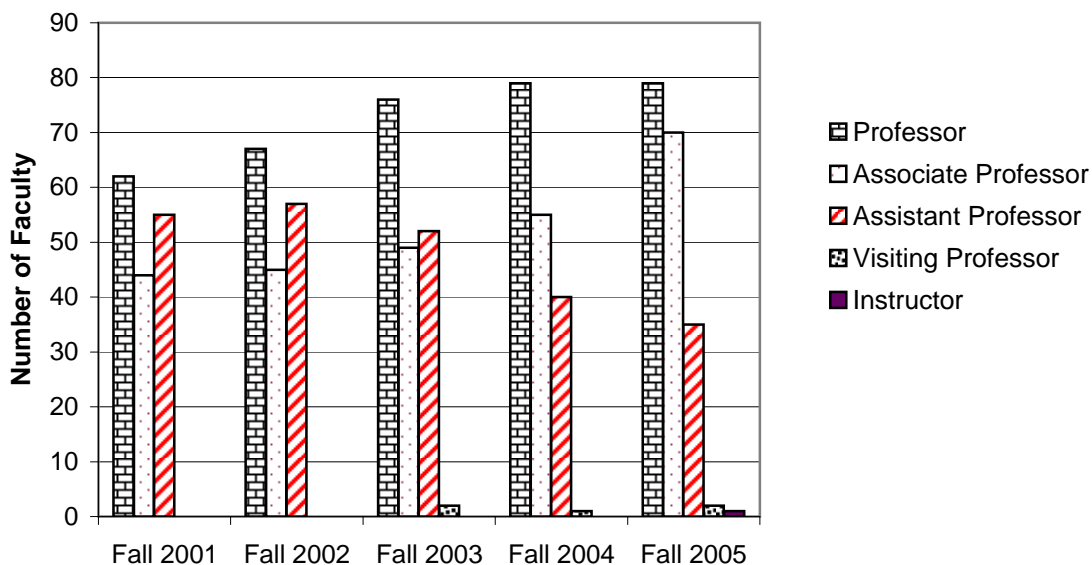
Tenure Status	Fall 2001		Fall 2002		Fall 2003		Fall 2004		Fall 2005	
Tenured	78	48.4%	77	45.6%	80	44.7%	87	48.1%	89	47.6%
Non-Tenured (On Tenure Track)	61	37.9%	72	42.6%	73	40.8%	70	38.7%	69	36.9%
Non-Tenured (Not on Tenure Track)	22	13.7%	20	11.8%	26	14.5%	24	13.3%	29	15.5%
Total	161	100%	169	100%	179	100%	181	100%	187	100%

Source: Academic Affairs Office

Tenure Status of Full-Time Faculty



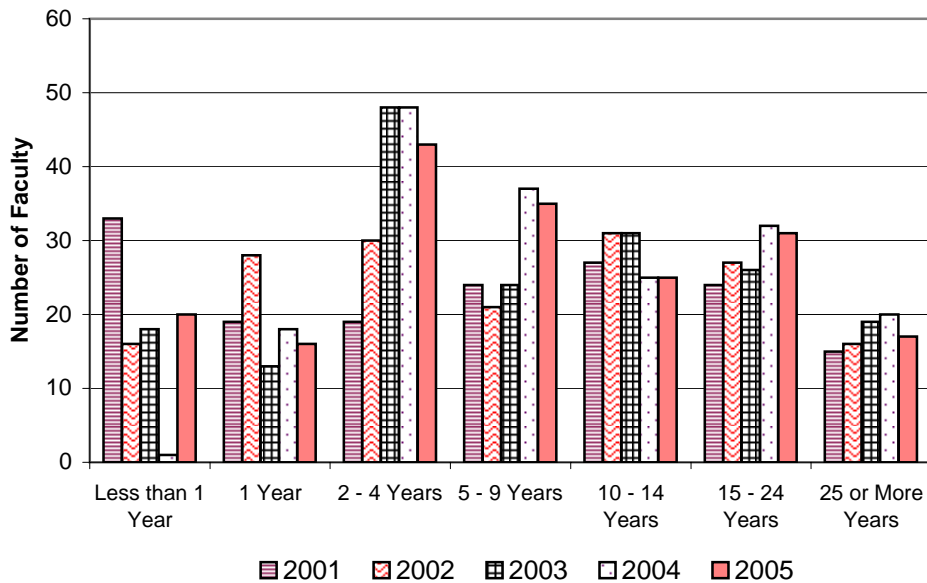
Rank of Full-Time Faculty



Years of Service of Full-Time Faculty Fall 2001 - Fall 2005

Years at ULV	2001	2002	2003	2004	2005
Less than 1 Year	33	16	18	1	20
1 Year	19	28	13	18	16
2 - 4 Years	19	30	48	48	43
5 - 9 Years	24	21	24	37	35
10 - 14 Years	27	31	31	25	25
15 - 24 Years	24	27	26	32	31
25 or More Years	15	16	19	20	17
Total Faculty	161	169	179	181	187

Years of Service of Full-Time Faculty



Gender, Ethnicity, and Employment Status of ULV Regular Contracted Staff - Fall 2005

Staff by Gender and Position

Gender	Administrative/Professional		Classified		All Positions	
	Count	Percentage	Count	Percentage	Count	Percentage
Male	87	41.8%	54	28.0%	141	35.2%
Female	121	58.2%	139	72.0%	260	64.8%

Staff by Ethnicity and Position

Ethnicity	Administrative/Professional		Classified		All Positions	
	Count	Percentage	Count	Percentage	Count	Percentage
Black, Non-Hispanic	19	9.1%	16	8.3%	35	8.7%
American Indian/Alaskan Native	1	0.5%	3	1.6%	4	1.0%
Asian/Pacific Islander	14	6.7%	19	9.8%	33	8.2%
Hispanic	37	17.8%	49	25.4%	86	21.4%
White, non-Hispanic	132	63.5%	101	52.3%	233	58.1%
Unknown	5	2.4%	5	2.6%	10	2.5%

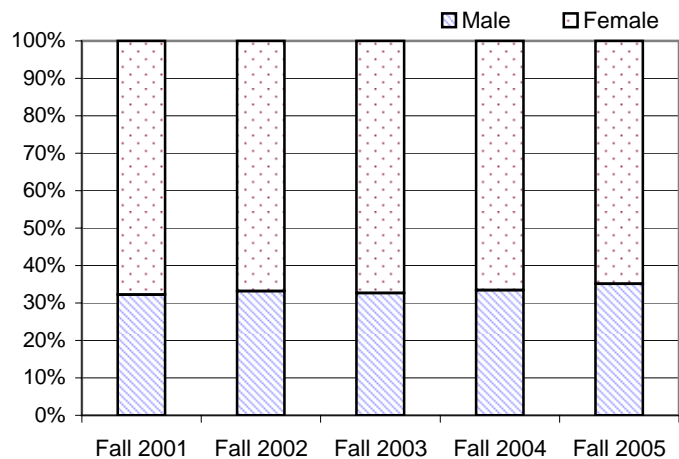
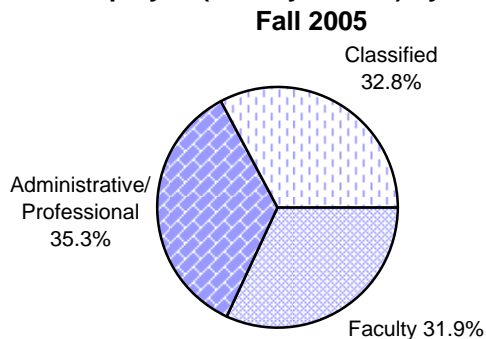
Staff by Appointment and Position

Appointment	Administrative/Professional		Classified		All Positions	
	Count	Percentage	Count	Percentage	Count	Percentage
Full-Time	202	97.1%	175	90.7%	377	94.0%
Part-Time	6	2.9%	18	9.3%	24	6.0%
Total Staff	208	100.0%	193	100.0%	401	100.0%

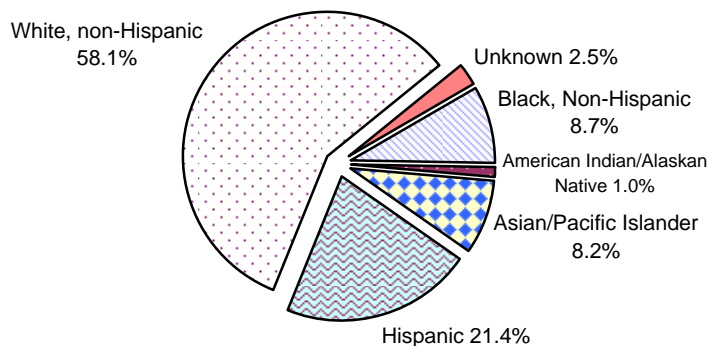
Source: Human Resources

Staff by Gender (Fall 2001- Fall 2005)

Employee (Faculty & Staff) by Position



Staff by Ethnicity - Fall 2005



FINANCE
AND
FINANCIAL
AID
PROFILE

**Financial Aid for Traditional-Age American Students
Fall 2001- Fall 2005**

Enrolled Students Receiving Aid:

	Fall 2001		Fall 2002		Fall 2003		Fall 2004		Fall 2005	
	Freshmen	Undergrad	Freshmen	Undergrad	Freshmen	Undergrad	Freshmen	Undergrad	Freshmen	Undergrad
a) Number of degree-seeking undergraduate students	305	1343	295	1371	289	1338	375	1546	332	1579
b) Number of students in line a who were financial aid applicants (include applicants for all types of aid)	247	1090	287	1285	274	1173	343	1363	308	1387
c) Number of students in line b who were determined to have financial need	228	1011	269	1185	255	1087	313	1265	282	1306
d) Number of students in line c who received any financial aid	228	1011	269	1185	255	1087	313	1261	282	1304
e) Number of students in line d who received any need-based gift aid	225	989	238	1086	238	1018	300	1216	233	1192
f) Number of students in line d who received any need-based self-help aid	170	777	206	920	201	882	276	1097	86	356
g) Number of students in line d who received any non-need-based gift aid	29	255	224	995	226	946	294	1118	239	1168
h) Number of students in line d whose need was fully met (exclude PLUS loans, unsubsidized loans, and private alternative loans)	43	228	79	235	55	328	46	245	1	24
i) On average, the percentage of need that was met of students who received any need-based aid. Exclude any resources that were awarded to replace EFC (PLUS loans, unsubsidized loans, and private alternative loans)	83%	82%	88%	83%	85%	85%	%	%	%	%
j) The average financial aid package of those in line d. Exclude any resources that were awarded to replace EFC (PLUS loans, unsubsidized loans, and private alternative loans)	\$18,191	\$17,746	\$20,562	\$19,477	\$23,895	24188	\$21,985	\$21,604	\$18,403	\$20,636
k) Average need-based gift award of those in line e	\$14,867	\$12,815	\$11,224	\$10,318	\$10,182	\$10,027	\$10,572	\$10,995	\$9,243	\$10,620
l) PLUS loans, unsubsidized loans, and private alternative loans) of those in line f	\$4,310	\$5,326	\$4,207	\$5,249	\$4,390	\$5,171	\$4,904	\$5,691	\$1,783	\$2,163
m) Average need-based loan (excluding PLUS loans, unsubsidized loans, and private alternative loans) of those in line f who received a need-based loan	\$3,290	\$4,254	\$3,581	\$4,424	\$3,813	\$5,413	\$2,907	\$3,442	\$4,417	\$4,637

Number of Enrolled Students Receiving Non-Need-Based Grants and Scholarships:

n) Number of students in line a who had no financial need and who received non-need-based gift aid (exclude those receiving athletic awards and tuition benefits)	4	15	15	57	27	148	49	202	42	211
o) Average dollar amount of non-need-based gift aid awarded to students in line n	\$863	\$2,610	\$9,749	\$7,456	\$8,414	\$7,144	\$9,204	\$7,716	\$8,988	\$7,929
p) Number of students in line a who received a non-need-based athletic grant or scholarship	0	0	0	0	0	0	NA	NA	NA	NA
q) Average dollar amount of non-need-based athletic grants and scholarships awarded to students in line p	\$0	\$0	\$0	\$0	0	0	NA	NA	NA	NA

* "Freshmen" is for "First-Time Full-Time Freshmen", and "Undergrad" is for "Full-time Undergraduate, including Freshmen".
Source: Common Data Set 2001-2002, 2002-2003, 2003-2004, 2004-2005, and 2005-2006.

Finances for Fiscal Year 2005

Assets

Current Assets	64,818,655
Property, plant and equipment:	
Land	8,595,901
Buildings and improvements	49,520,017
Equipment	19,012,448
Construction in progress	1,813,678
	<u>78,942,044</u>
Less: Accumulated depreciation	<u>(38,289,986)</u>
Total property, plant and equipment	<u>40,652,058</u>
Total assets	<u><u>\$105,470,713</u></u>

Liabilities and Net Assets

Liabilities	43,487,181
Net Assets	<u>61,983,532</u>
Total liabilities and net assets	<u><u>\$105,470,713</u></u>

Student Grants

Pell grants	3,949,240
Other federal grants	987,862
State grants	7,685,589
Funded institutional grants	755,282
Unfunded institutional grants	14,686,639
Total student grants	<u><u>28,064,612</u></u>

Source: Audited Financial Statements

Finances for Fiscal Year 2005

Sources of Funds	
Student tuition and fees	90,463,374
Less: Student financial aid	<u>(16,695,746)</u>
Net student tuition and fees	73,767,628
Private gifts and grants	5,190,813
Government grants (Federal and State)	1,355,109
Investment income	2,710,215
Auxiliary enterprises	4,333,370
Annuity and trust gifts	10,000
Other	<u>1,271,781</u>
Total revenues	<u><u>88,638,916</u></u>
Expenses	
Instruction	42,967,152
Academic support	14,961,489
Student services	11,062,904
Institutional support	11,444,907
Auxiliary enterprises	<u>4,557,232</u>
Total expenses	<u>84,993,684</u>
Change in Net Assets	3,645,232
Net assets at beginning of year	<u>58,338,300</u>
Net assets at end of year	<u><u>\$61,983,532</u></u>

Source: Audited Financial Statements