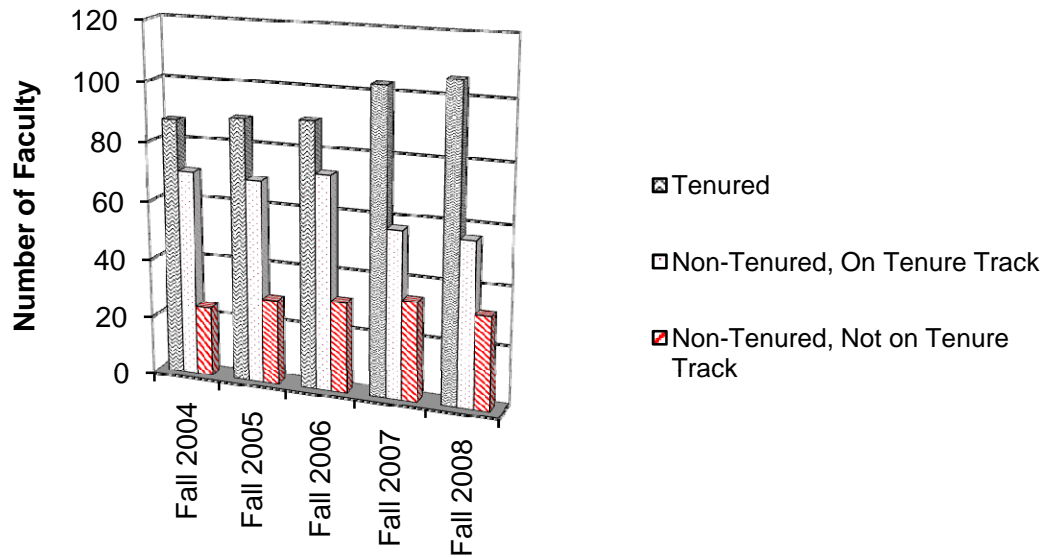


## D-4: Tenure Status of Full-Time Faculty Fall 2004 - Fall 2008

Tenure Status	Fall 2004		Fall 2005		Fall 2006		Fall 2007		Fall 2008	
Tenured	87	48.1%	89	47.6%	90	46.4%	103	53.1%	106	54.6%
Non-Tenured (On Tenure Track)	70	38.7%	69	36.9%	73	37.6%	57	29.4%	56	28.9%
Non-Tenured (Not on Tenure Track)	24	13.3%	29	15.5%	31	16.0%	34	17.5%	32	16.5%
Total	181	100%	187	100%	194	100%	194	100%	194	100%

Source: Academic Affairs Office (Fall 2002- Fall 2005) and Human Resource (Fall 2006 and after).

### Tenure Status of Full-Time Faculty



### Rank of Full-Time Faculty

