

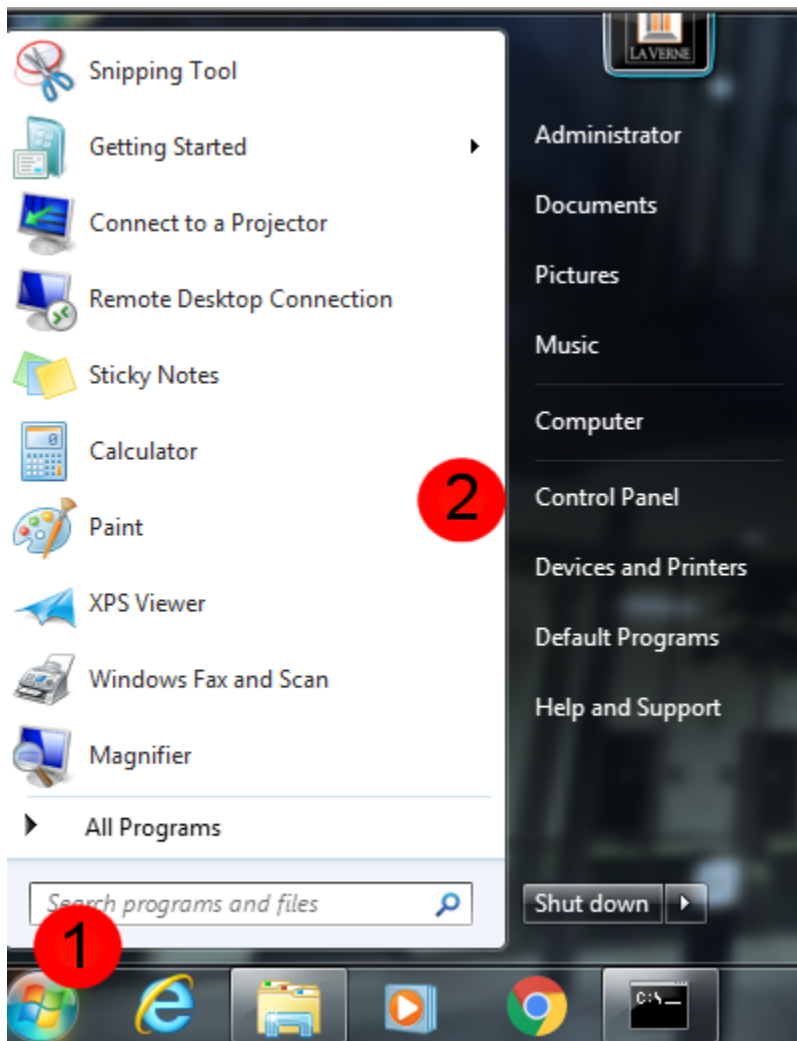
Win7 Instructions

Instructions on how to connect to the “**Univ of La Verne Wi-Fi Protected**” Wi-Fi network with your Windows 7 device for the first time.

Step 1: Go to the Start menu by clicking the **Start** button.



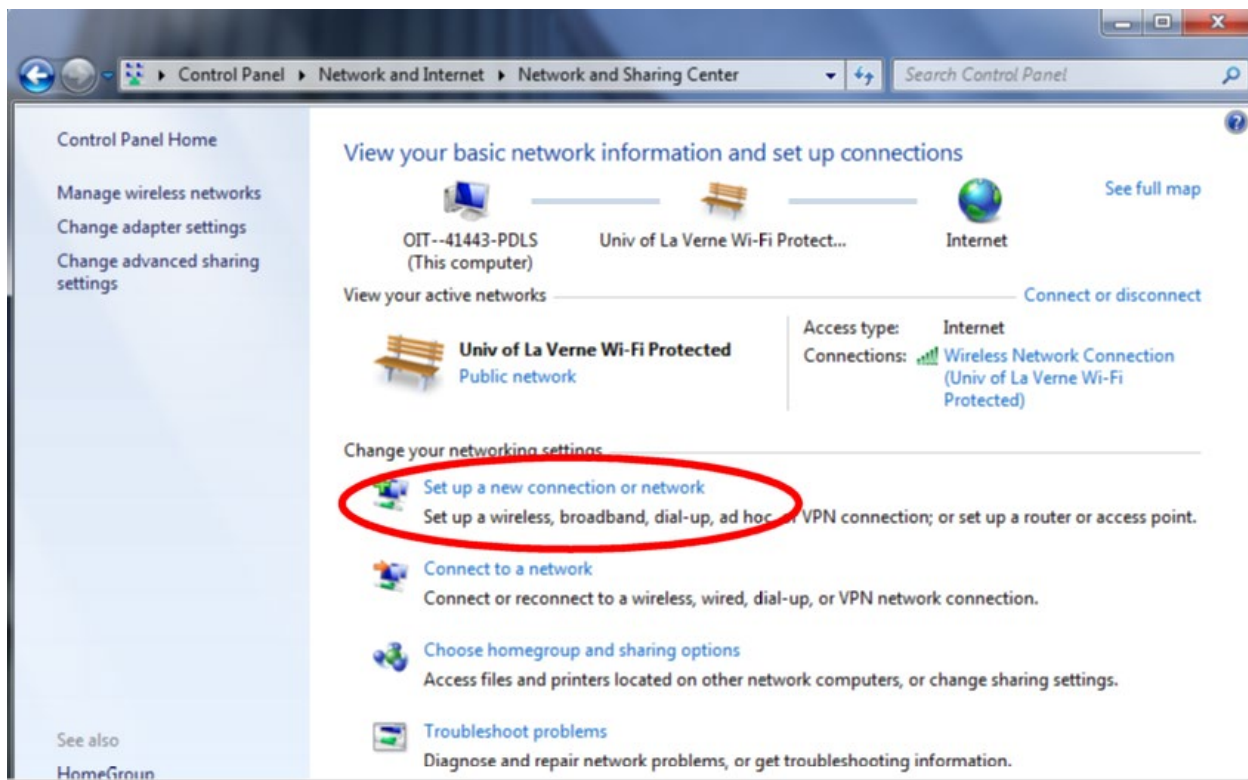
Step 2: Click on **Control Panel**



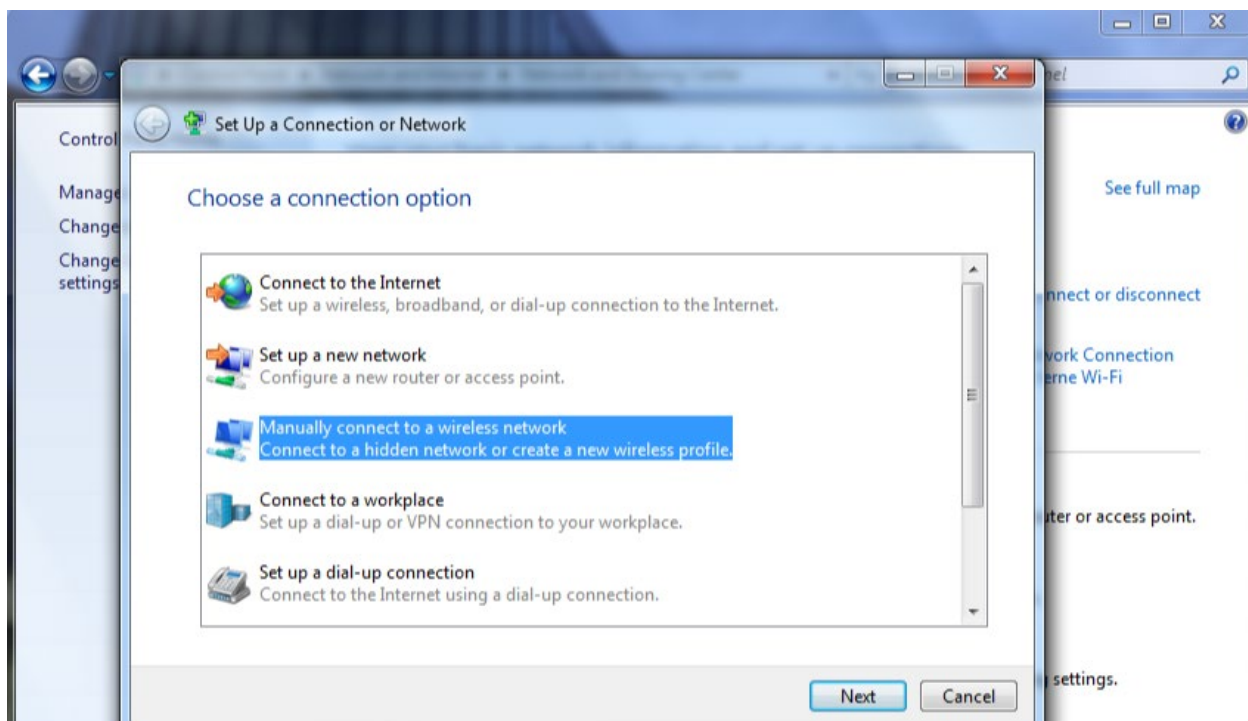
Step 3: Click on **Network and Internet**

Step 4: Click on **Network and Sharing Center**

Step 5: Click on “Set up a new connection or network”



Step 6: Click “Manually connect to a wireless network” then click Next.



Step 7: Enter the following information for the wireless network.

- a. Enter **“Univ of La Verne Wi-Fi Protected”** for **Network name**
- b. Select **“WPA2-Enterprise”** for **Security type**
- c. Select **“AES”** for **Encryption type**
- d. Leave the **Security Key** text field box **blank**
- e. Check-mark **“Start connection automatically”**
- f. Click **Next**

Manually connect to a wireless network

Enter information for the wireless network you want to add

Network name: 7a

Security type: 7b

Encryption type: 7c

Security Key: 7d ☐ Hide characters

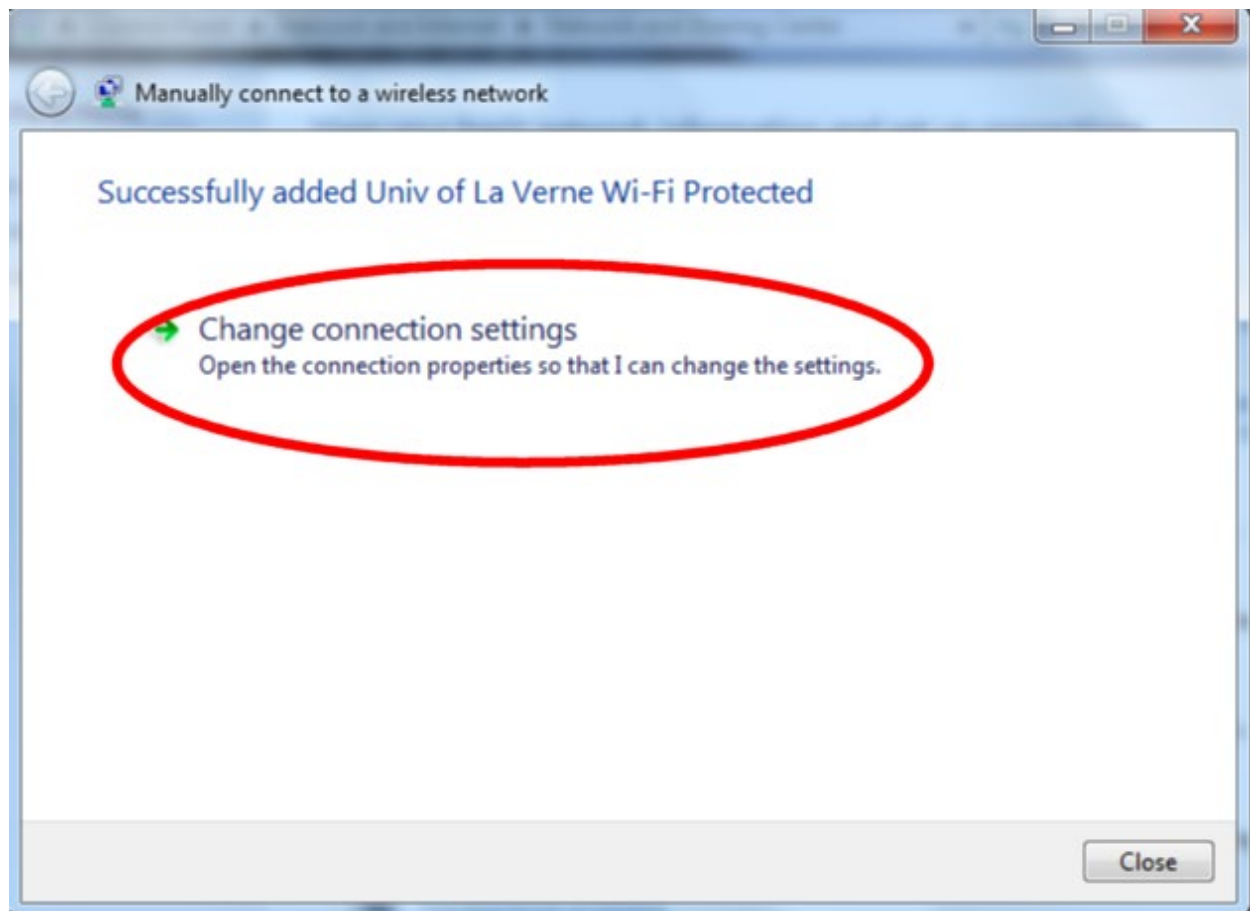
☒ Start this connection automatically 7e

☐ Connect even if the network is not broadcasting

Warning: If you select this option, your computer's privacy might be at risk.

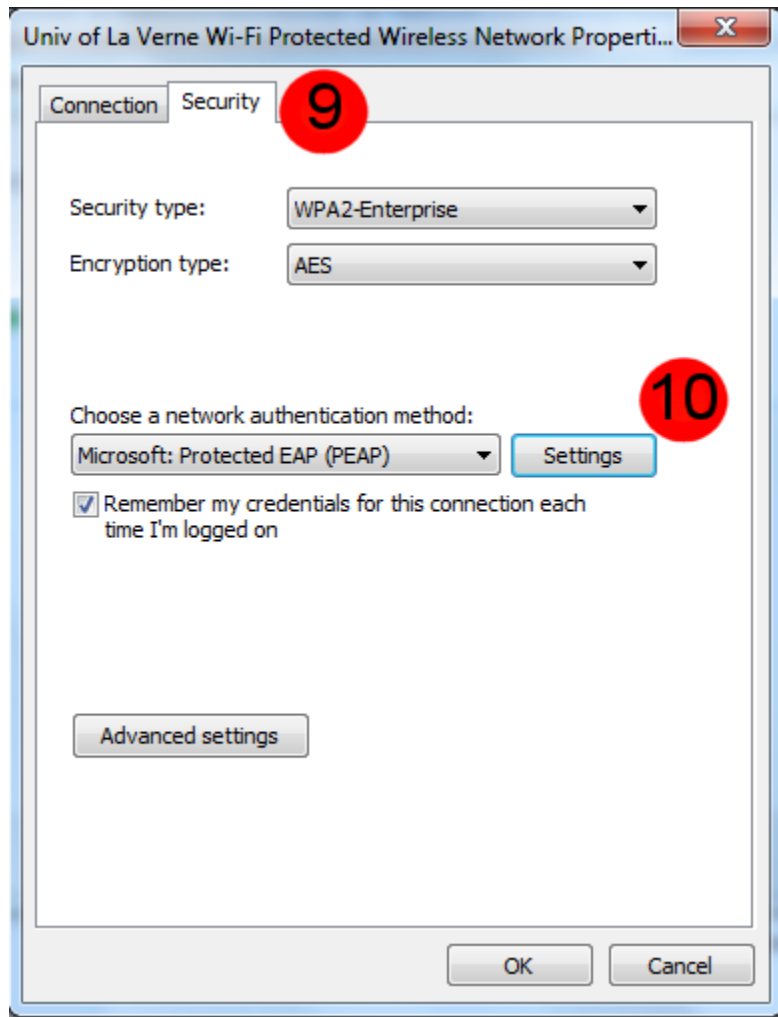
7f

Step 8: Click on “Change connection settings”



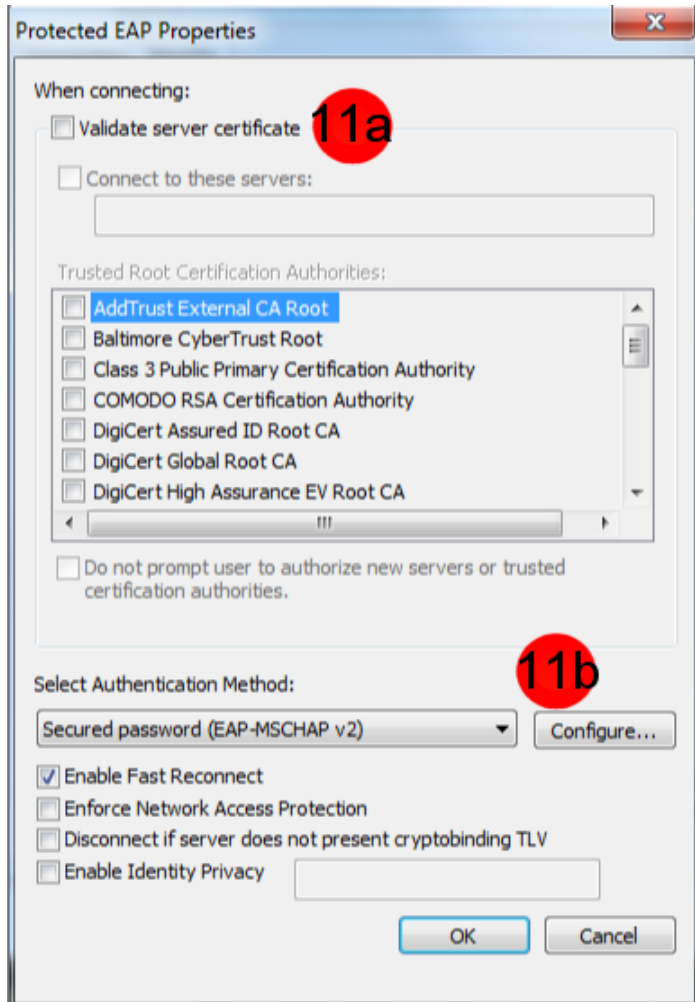
Step 9: On the Univ of La Verne Wi-Fi Protected Wireless Network Properties window, **select** the **Security** tab.

Step 10: On the **Security** Tab, Click on **Settings**.

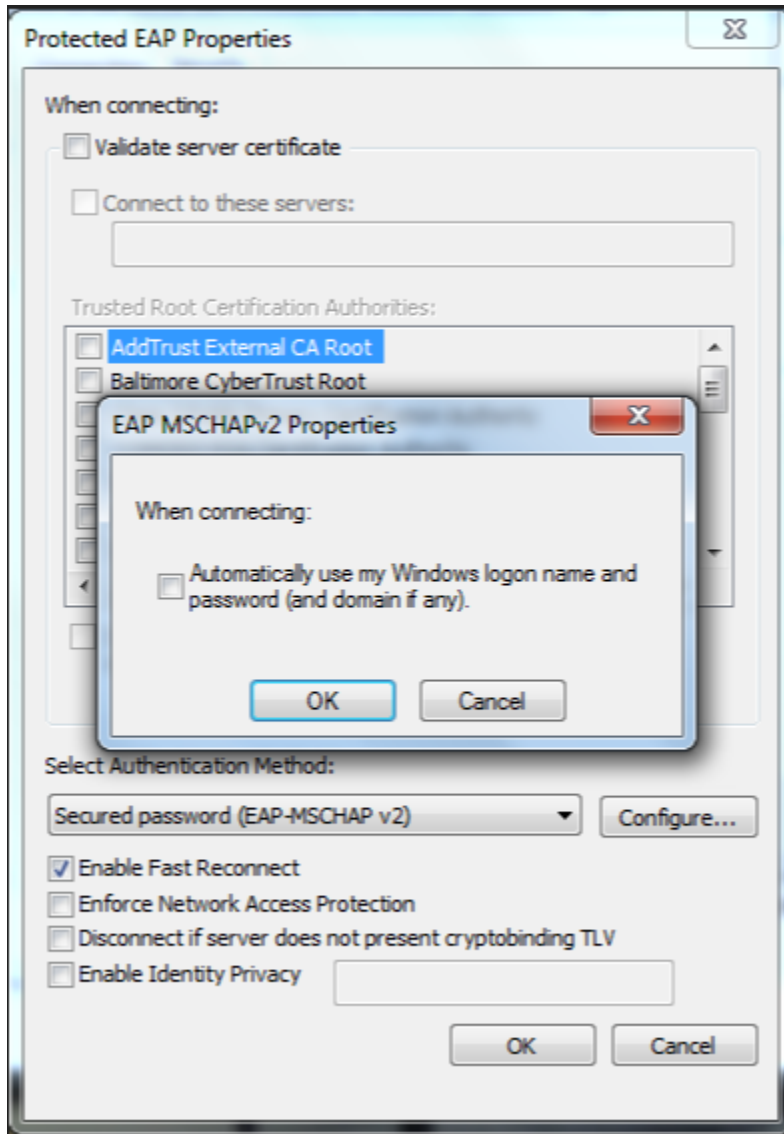


Step 11: On the Protected EAP Properties window:

- a. **Uncheck** the box for “**Validate server certificate**”
- b. **Click** on the **Configure** button

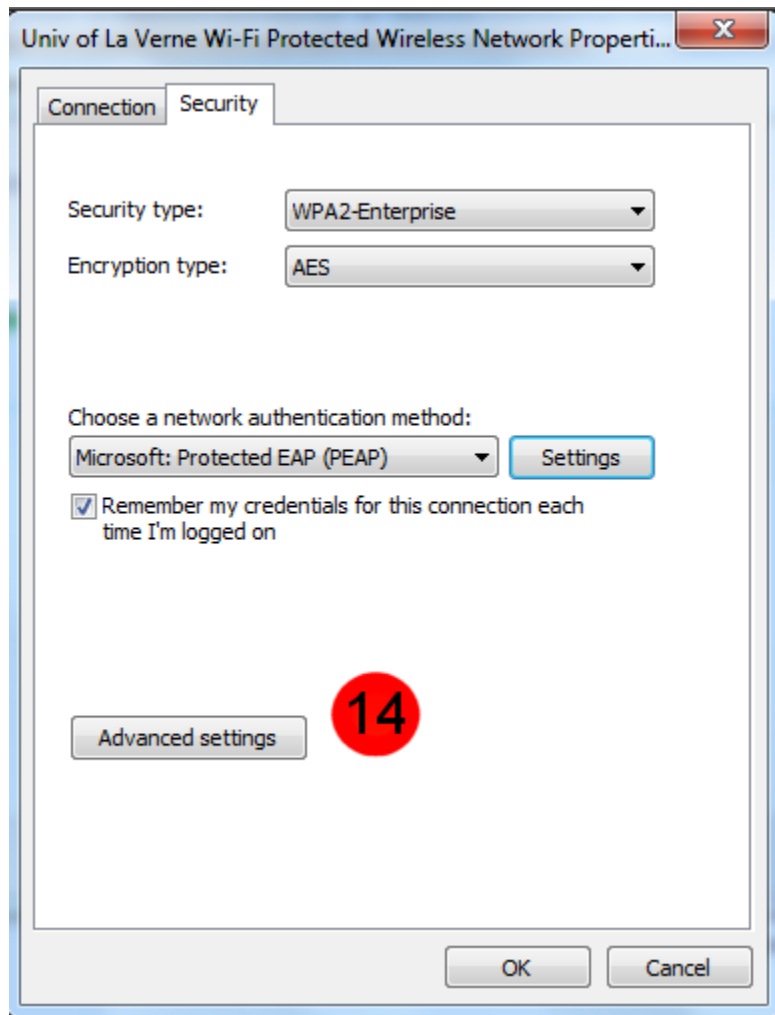


Step 12: On the EAP MSCHAPv2 Properties window, **Uncheck** the box for “**Automatically use my Windows logon.....**”, then click **OK**



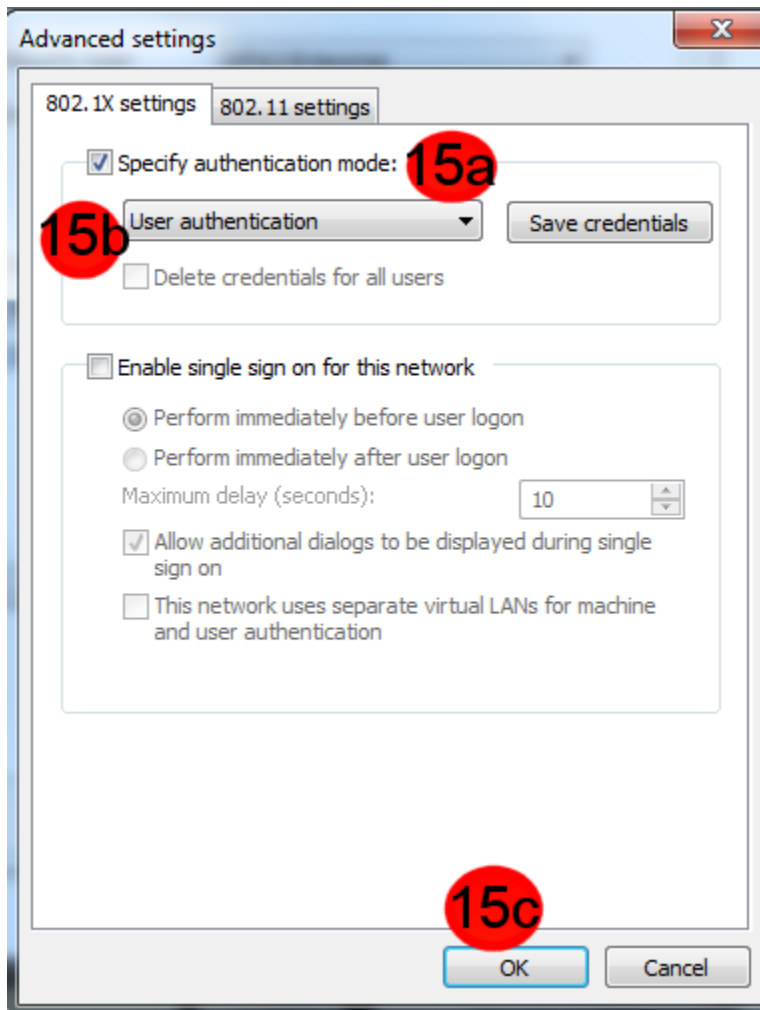
Step 13: Click **OK** to close the Protected EAP Properties window.

Step 14: On the Univ of La Verne Wi-Fi Protected Wireless Network Properties window, **click** on **Advanced Settings**

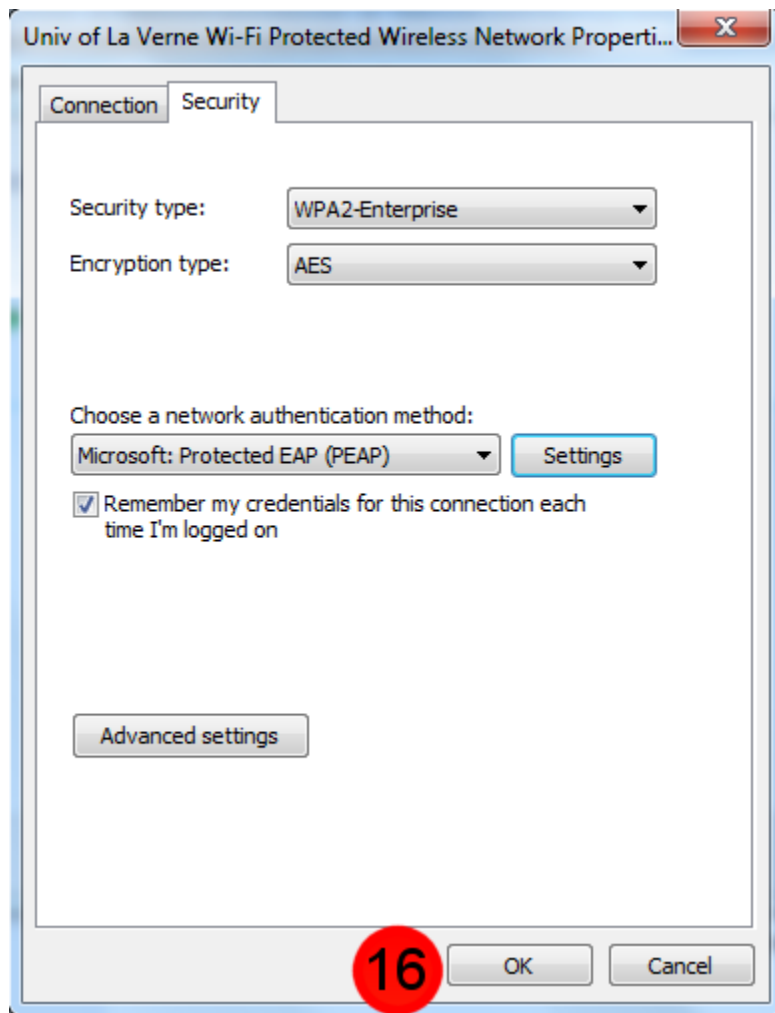


Step 15: On the Advanced Settings tab:

- a. **Check** the option “**Specify authentication mode**”
- b. Select “**User Authentication**” from the drop-down menu
- c. Click **OK**



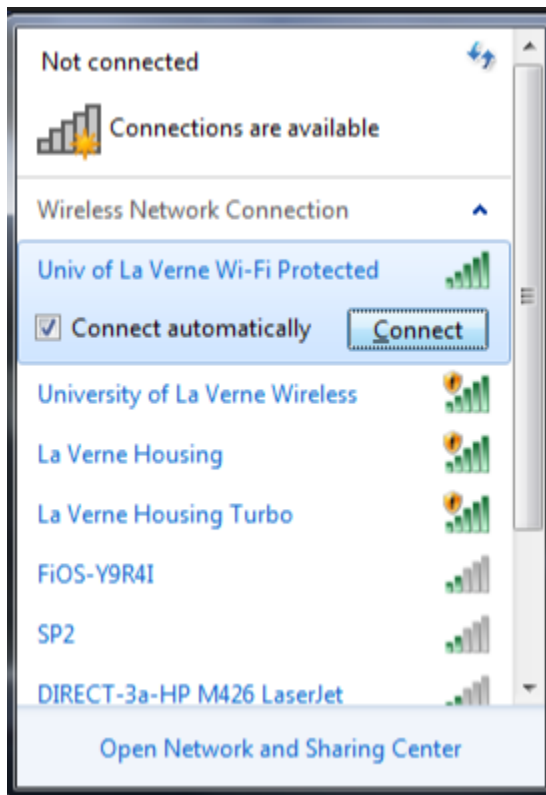
Step 16: Click **OK** to close the Univ of La Verne Wi-Fi Protected Wireless Network Properties window.



Step 17: Click the **Network Icon** to select from the available networks.



Step 18: Click on “Univ of La Verne Wi-Fi Protected” then click on **Connect**.



Step 19: Enter your **University of La Verne e-mail credentials**, then click on the **OK** button.

Note: If you do not have a University of La Verne e-mail account, please visit the following link for the instructions on how to access the guest Wi-Fi network:

<https://laverne.edu/technology/instructions-create-wi-fi-guest-account/>

