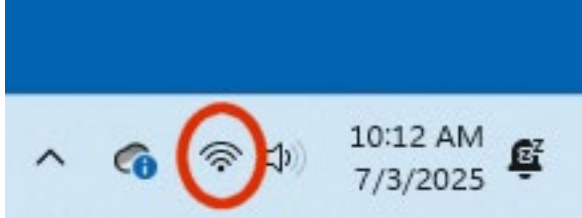


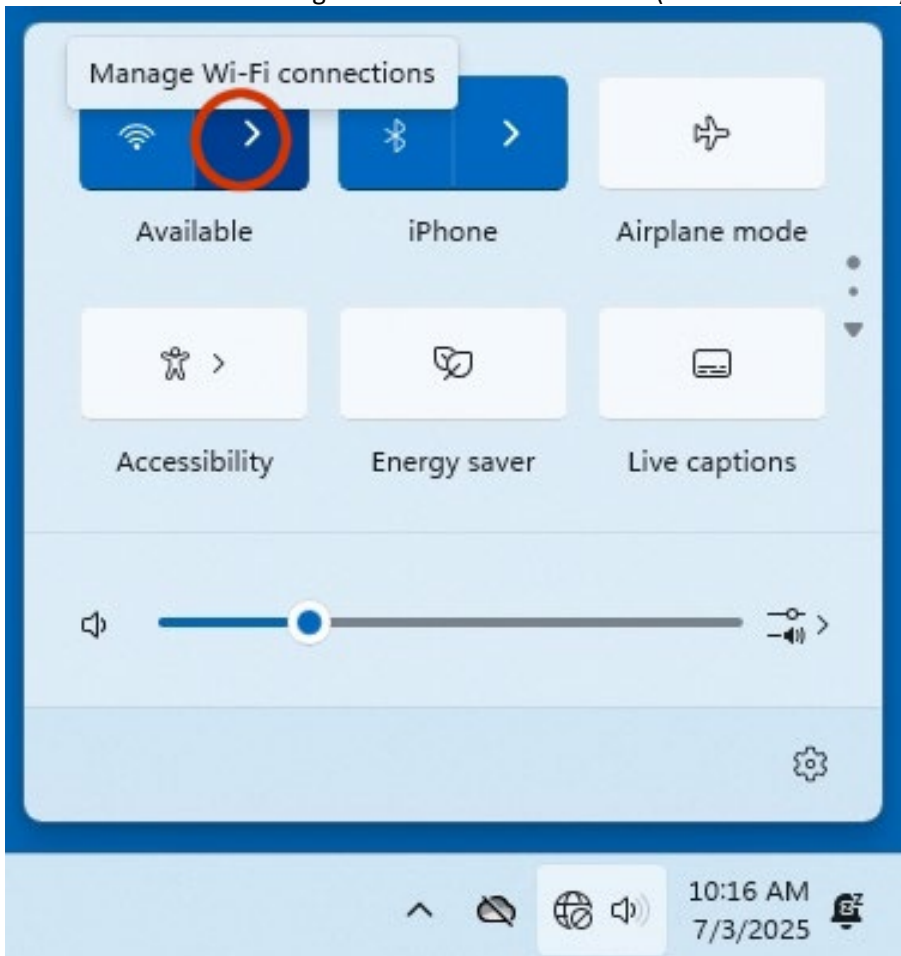
Windows 11

Follow these steps to connect your Windows 11 device to the “**Univ of La Verne Wi-Fi Protected**” network for the first time.

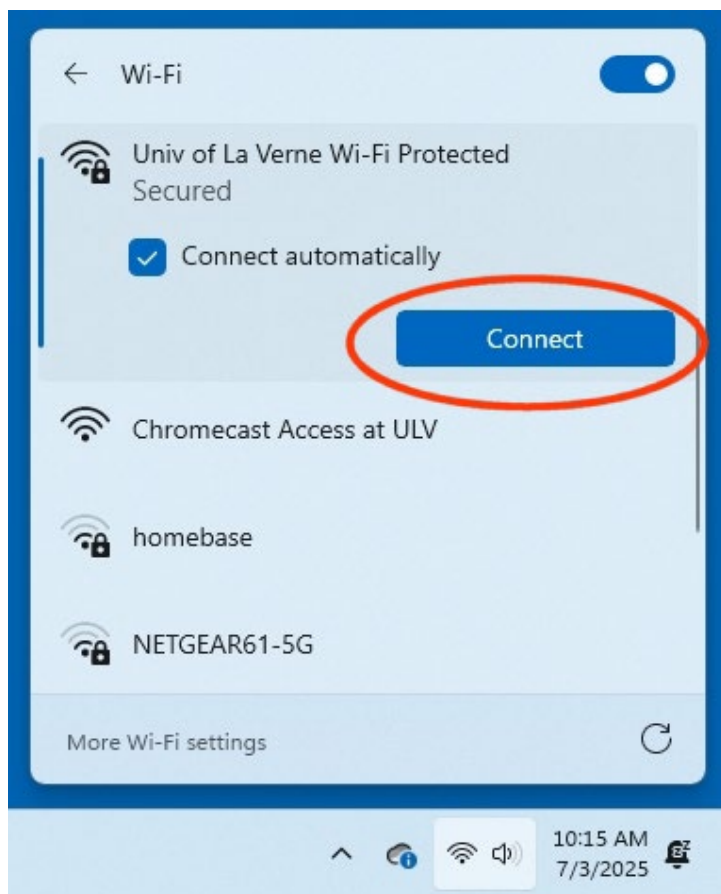
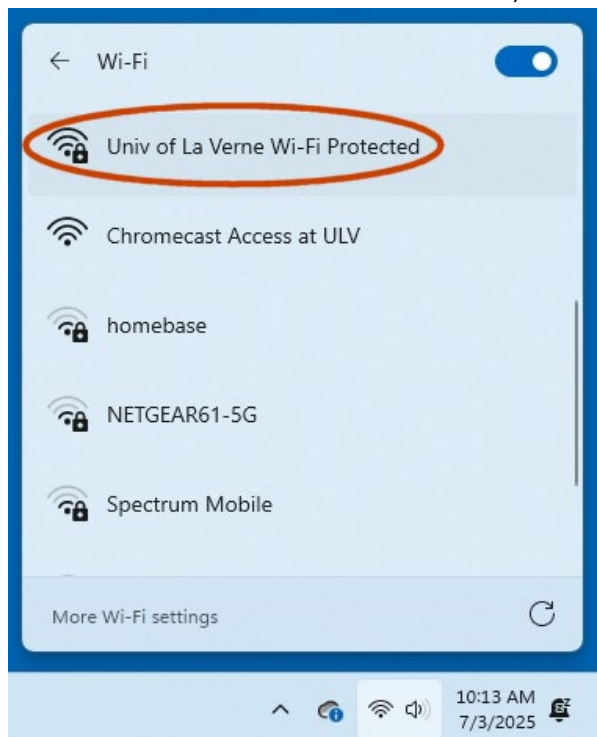
STEP 1: Click the **Wi-Fi** icon in the taskbar (lower right corner of your screen).



STEP 2: Click on the Manage Wi-Fi connections button (circled in red below).



STEP 3: From the list of available networks, select “Univ of La Verne Wi-Fi Protected”, then click **Connect**.



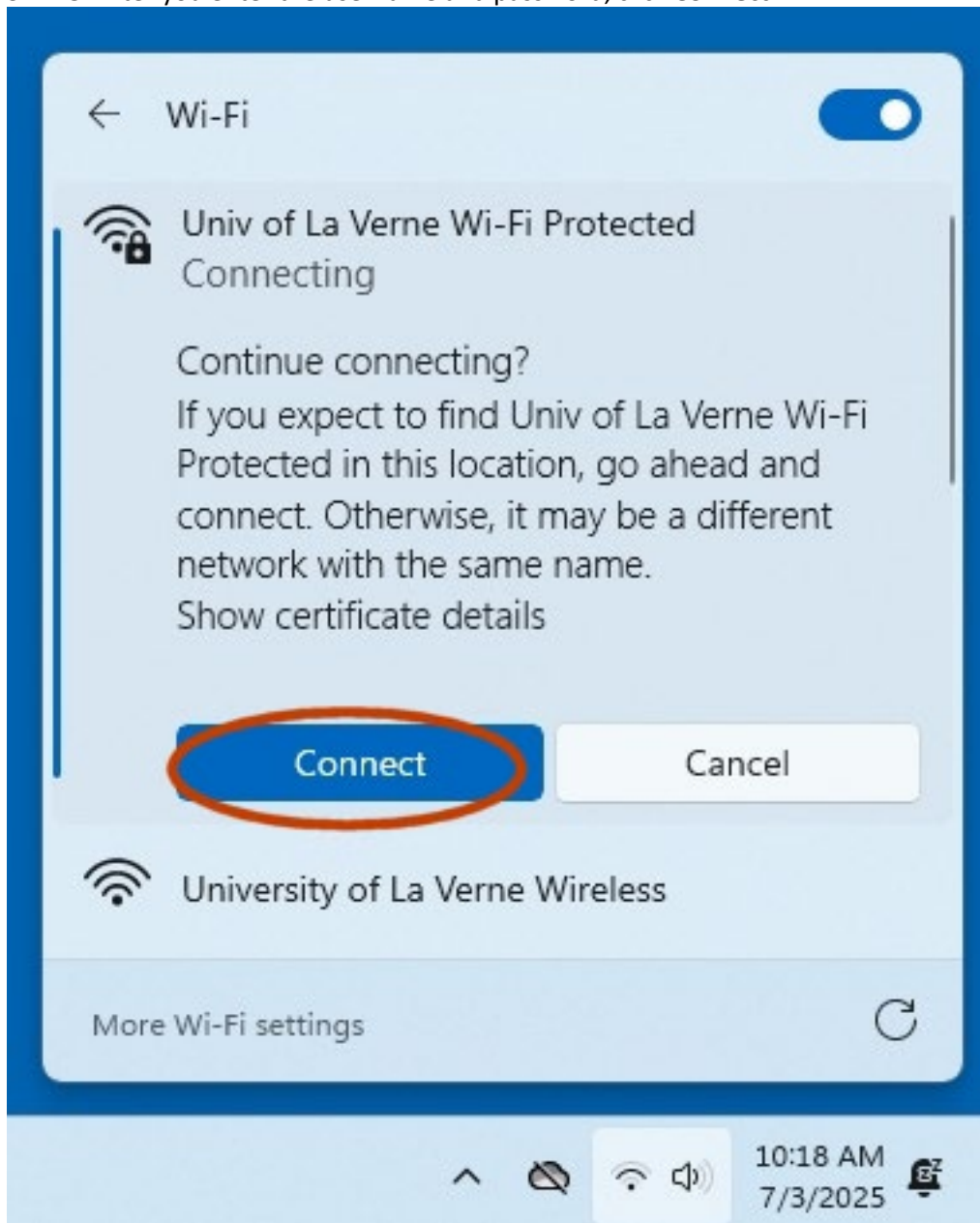
STEP 4: Enter your University of La Verne **email** credentials, then click **OK**.

- If your **username is 20 characters or fewer**, enter just your username (example: john.smith)
- If your **username is longer than 20 characters**, enter your **full email address** (example: alexandra.jones-smith@laverne.edu)

Note: If you do not have a University of La Verne email account, [click here](#) for guest Wi-Fi access instructions.

The screenshot shows a mobile device's Wi-Fi settings screen. At the top, there's a back arrow, the text 'Wi-Fi', and a toggle switch that is turned on. Below this is a network icon and the name 'net002'. The main section is titled 'Univ of La Verne Wi-Fi Protected Secured' with a Wi-Fi icon and a lock icon. Below the title, it says 'Enter your user name and password'. There are two input fields: 'User name' and 'Password'. Below these fields is the text 'Connect using a certificate'. At the bottom of the main section are two buttons: 'OK' and 'Cancel'. Below the main section is a link 'More Wi-Fi settings' and a refresh icon. The bottom of the screen shows a status bar with a home button, a mute button, a Wi-Fi icon, a speaker icon, the time '10:17 AM', the date '7/3/2025', and a notification icon.

STEP 5: After you enter the username and password, click **Connect**.



STEP 6: After you successfully connect to Wi-Fi, you will see the screen below. If you would like to disconnect from the Wi-Fi, click on the **Disconnect** button below.

